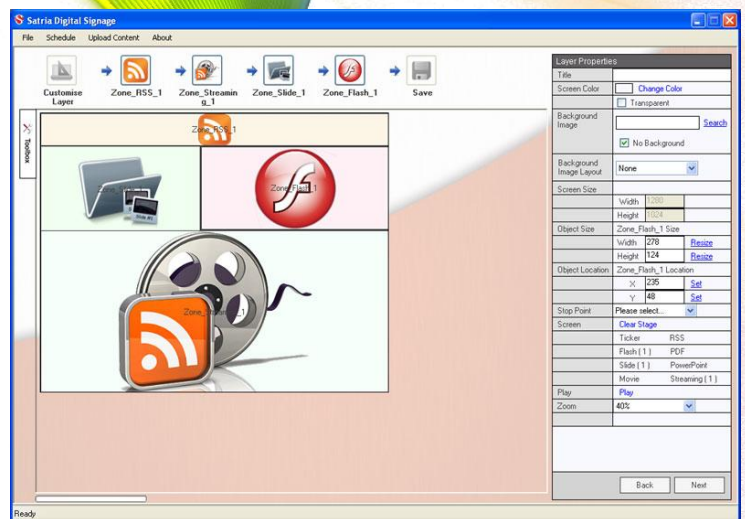


Satria Digital Signage (SDS) is more than cool — it's smart. The research shows companies around the world are realizing that digital signage can be interactive and dynamically changed to meet the demographics of their audience, not only because it adds a high-tech edge to a venue, but because it addresses the specific business needs of increasing revenue

This is a complete stand alone all-in-one digital signage solution on the market. These fully solid state and highly reliable products were primarily designed and ideal for corporate office, shopping mall, restaurant, salon, hotel lobbies, clinic...

SDS SOHO v2.0 offering Digital Signage solutions in today's modern and contemporary applications.

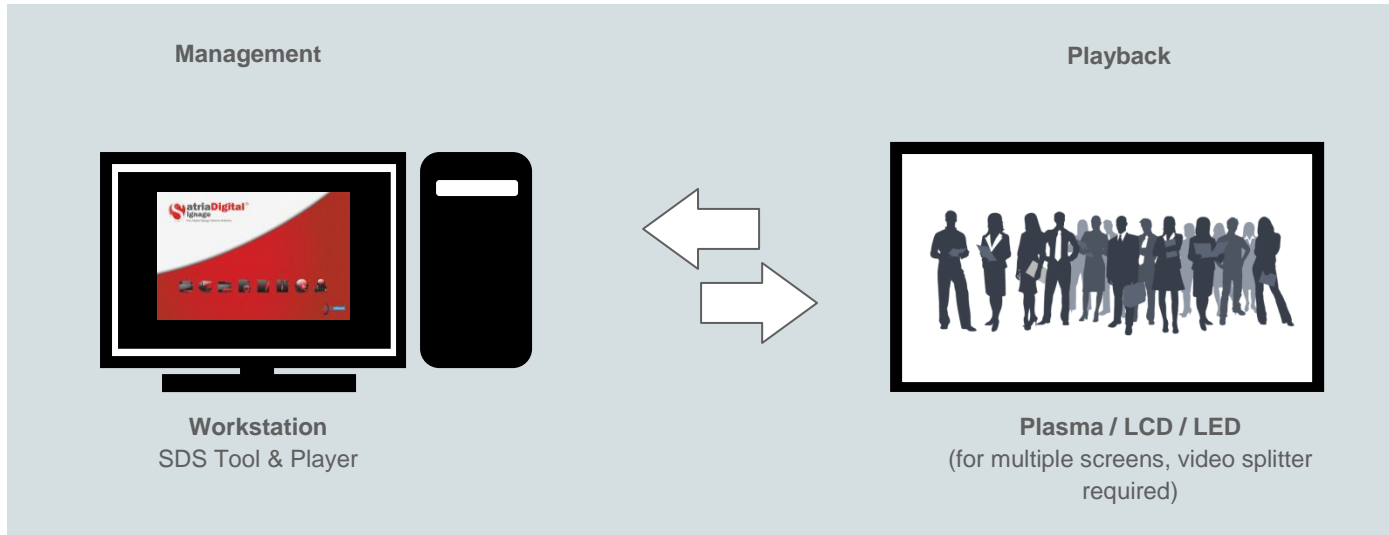


MAIN FEATURES

- Schedule the content play at specific day and time **on the same PC**.
- **Drag and drop feature** to simplify the effort to design the content display.
- **Most of popular file formats supported.** No conversion required.
- Playlists and Schedules: Create an **unlimited number of Layers** that will loop continuously for a given period. Display Layer once or repeat events daily, weekly, etc...
- Create your own zone on the SDS Designer. **Go from full screen.**
- Various type of content can be uploaded. **(flash, movie, audio, pictures, pdf, power point)**
- **Transparent background** features now available.
- **PowerPoint 2007** now supported.
- **Video Streaming** now supported.
- **Scrolling Text functionality** that support multilingual language characters and able to format the text in various font type, size and speed.
- **RSS Feed** features allow you to connect too many news-related sites; weblogs and other online publishers syndicate their content.
- Bundle up together with **SDS Player**

COMMUNICATION SCHEMATIC

SDS SOHO is a single PC solution. Both the SDS Tool and SDS Player modules reside on the same PC so you can upload content, create and manage layer, schedule and playback all on a single computer. You can display your content on one or more screens (video splitter required).

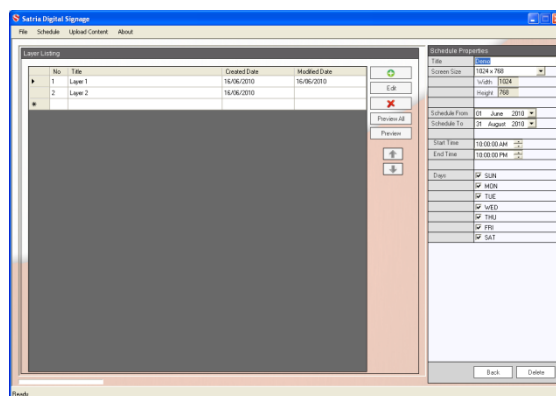


APPLICATIONS

- **Public information** – news, weather and local (location specific) information, such as fire exits and traveler information
- **Internal information** - corporate messages, health & safety, news, etc.
- **Advertising** – either related to the location the signage is in or just using the audience reach of the screens for general advertising
- **Brand building** – in-store digital signage to promote the brand and build a brand identity
- **Influencing customer behavior** – directing customers to different areas, increasing the dwell time on the store premises
- **Enhancing the environment** – with interactive screens (in the floor for example) or with dynamic way finding
- **Enhancing customer experience** – applications include the reduction of perceived wait time in restaurant waiting areas, bank queues, etc., as well as recipe demonstrations in food stores

MINIMUM SYSTEM REQUIREMENT

- Microsoft Windows 7, Vista, Windows XP Pro Service Pack 3 (32 bit)
- Intel Pentium Core Duo Processor or above
- 2GB RAM with 500MB free hard disk space
- DirectX compatible, accelerated video card
- DirectSound compatible audio card
- MSSQL 2005 Express Edition or latest
- Microsoft .Net Framework 2.0 or latest
- Windows Media Player v9 or latest
- Adobe Flash Player 10 or latest



JAYA Satria MEDIKOM SDN BHD (484553 v)
 L-5-5, Solaris Mont' Kiara, 2, Jalan Solaris, Mont' Kiara,
 50480 Kuala Lumpur, Malaysia
 Tel 603.6203.6683
 Fax 603.6203.7209
digital.signage@jayasatria.com