

CHRISTOPHER O'BRIEN

**AW/11\_MA**



## AW/11\_MA

This MA collection by Christopher O'Brien has at its heart the abstraction of the male silhouette through the manipulation of fabric and layering in a distinctive yet restrained manner. The use of distressed and crinkled fabrics throughout each design creates individual subtleties and elements of awkwardness, which at the first glance are not immediately apparent. Whilst the spirit of the collection is in tune with ideas of minimalist menswear and traditional tailoring, albeit in a disassociated way, it develops its theme by amalgamating these conventions with styles drawn from elsewhere.

Throughout the collection, the design process has referred to sportswear to art and photography, especially Derek Ridger's brilliant pictures and to wartime images from the middle east. Images using garment layering in unconventional ways is a consistent theme, the effects of using a constricting layer within the garments make them appear disturbed. This idea became a way of bringing an uneasy and crinkled effect to the top layer of the silhouette. This in essence creates a textile that becomes the garment itself, encouraging a different view to the normal conceptions of menswear and preconceived ideas on layering.

The variation of intense blues and whites utilised from garment to garment is a direct Influence from Francis Bacon's "Man in Blue" series. The collection takes muted blue and aligns it against the contrast of striking white in order to convey further the angular composition that the manipulation of fabric and layering offers in abstracting the male silhouette. The colours used allow the individual garment subtleties to take an unobvious stance, encouraging that second glance to really understand the intricacies that make up the body of work that is this collection.



4-5



6-7



8-9



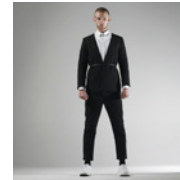
10-11



12-13



14-15



16-17



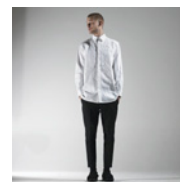
18-19



20-21



p22-23















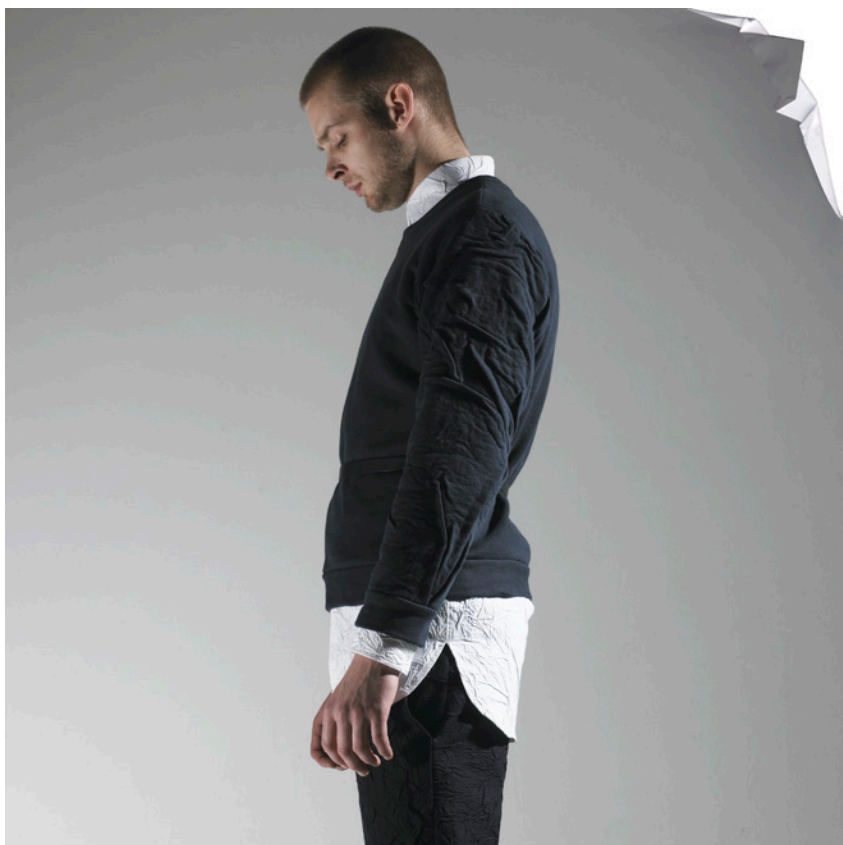
























## PROFESSIONAL WORK EXPERIENCE

Jens Laugesen design advisory. Studio Manager & PA to Jens Laugesen May 2008 – July 2009

Jens Laugesen studio ltd. Studio Assistant January 2008 – May 2008

Giorgio Armani/Armani Jeans. Design Assistant Intern based in Milan July 2006 – October 2006

Jonathan Saunders. Studio Assistant Intern June 2005 – November 2005

## EDUCATION

2010-2011 - Central Saint Martins School of Art and Design: MA Fashion Design Menswear

2003-2007 Central Saint Martins School of Art and Design: BA (Honours) Fashion Design

2002-2003 Loughborough University: Art and Design Foundation

## Contact

cobrien29@hotmail.co.uk  
07961580894

