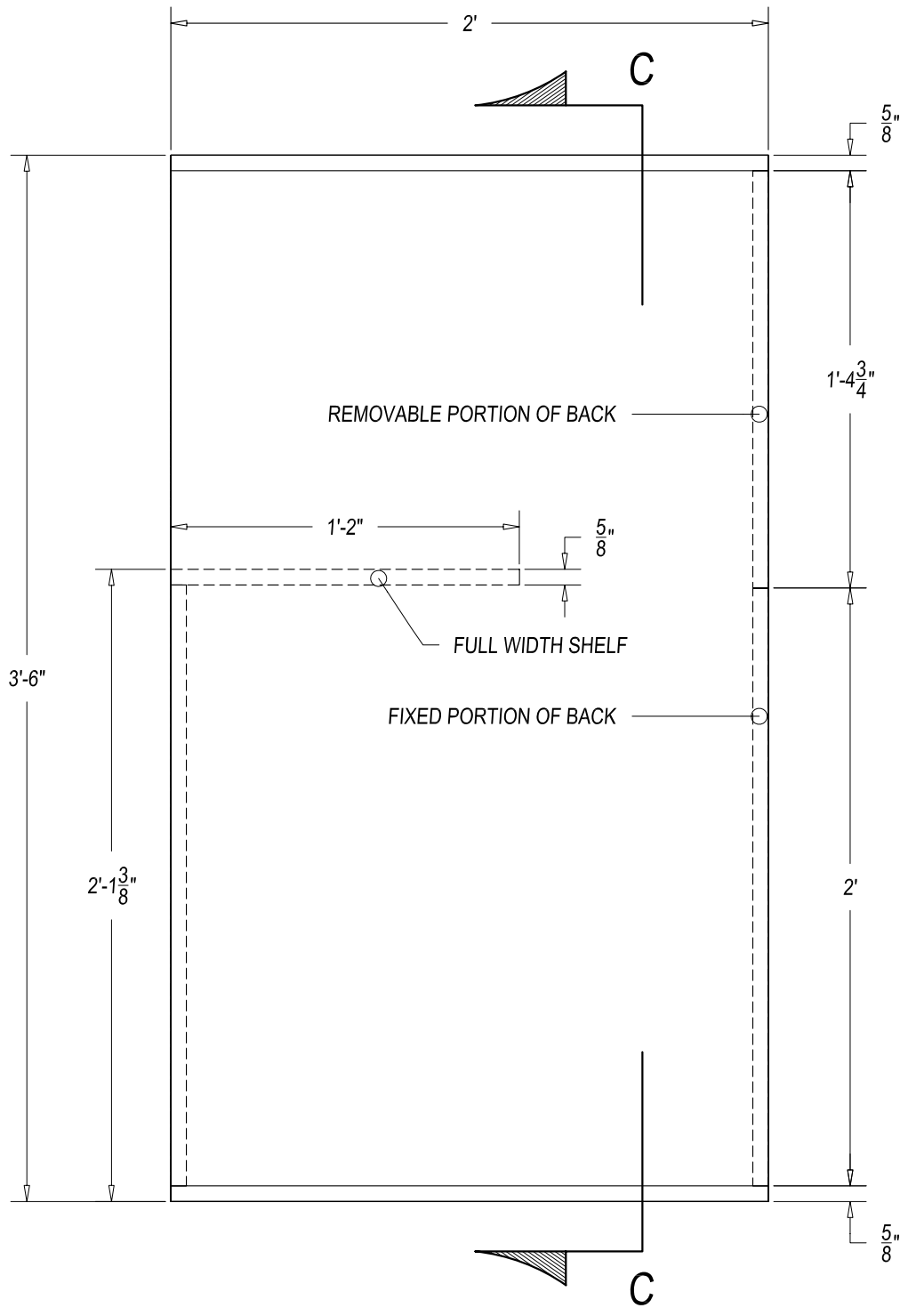
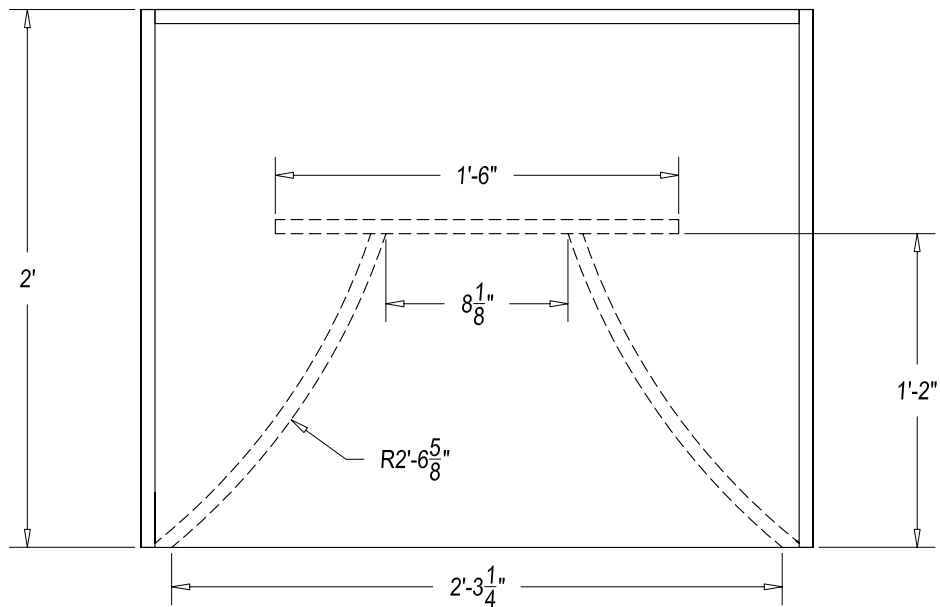


FRONT VIEW



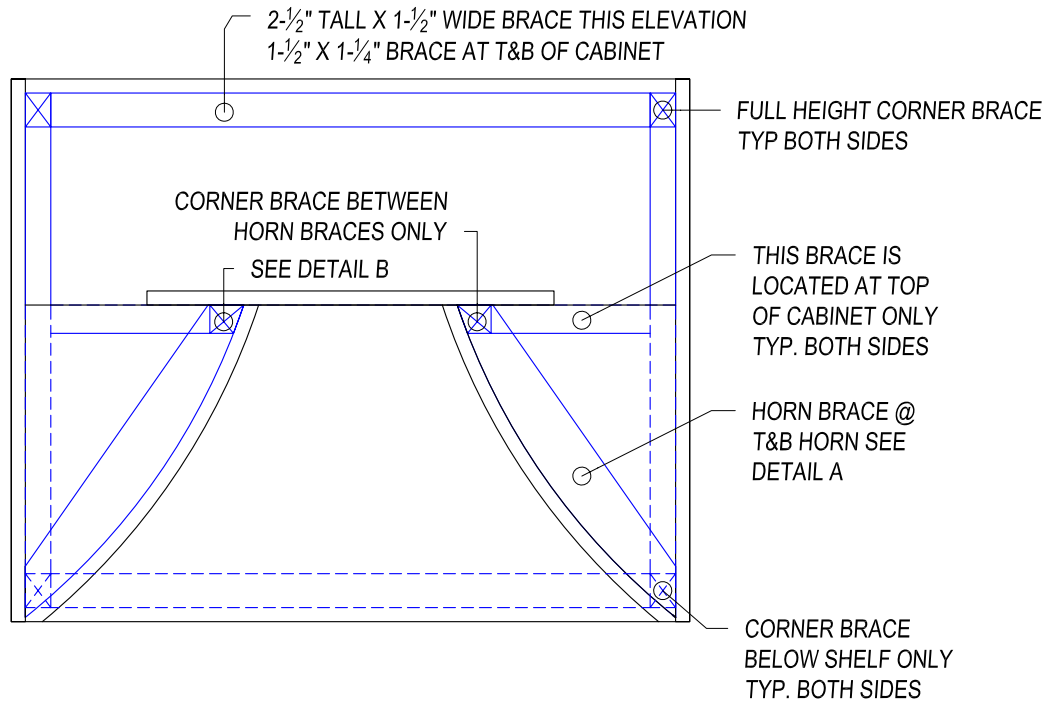
SIDE VIEW



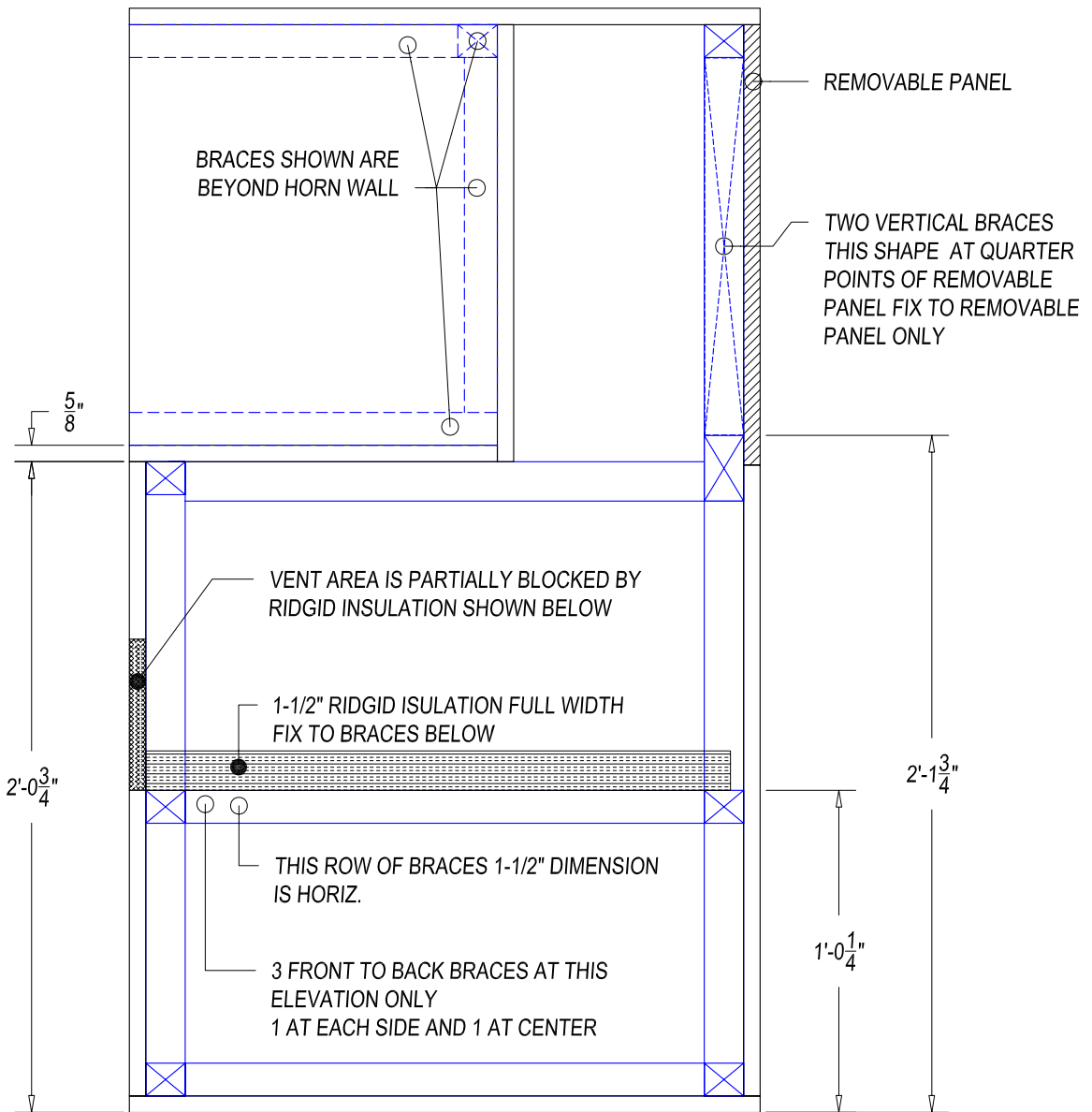
TOP VIEW

NOTES:

- 1.) ALL BRACES
1-1/2" X 1-1/4" U.N.O
- 2.) HORIZONTAL
BRACING AT LEVELS BELOW
NOT SHOWN



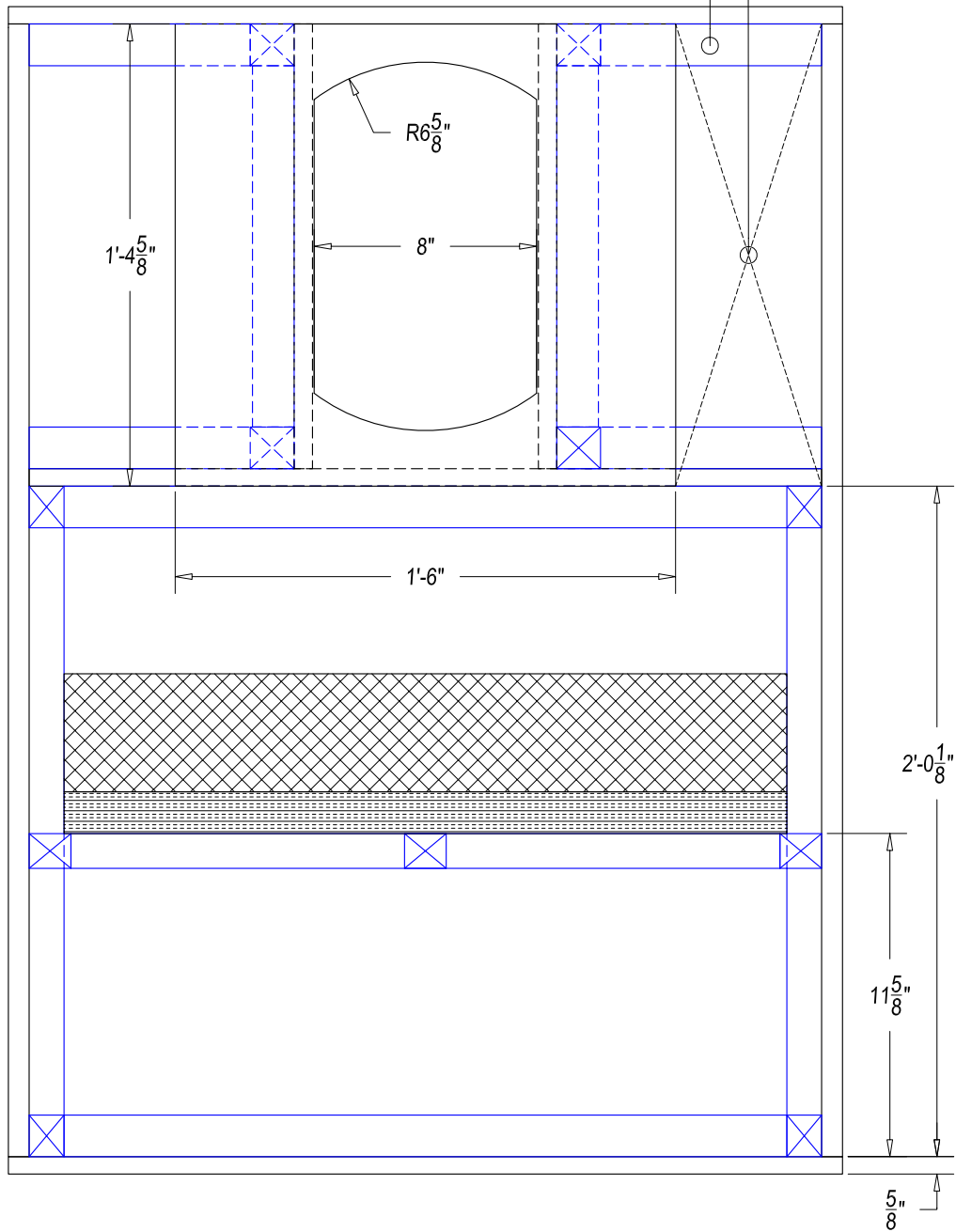
SECTION A-A



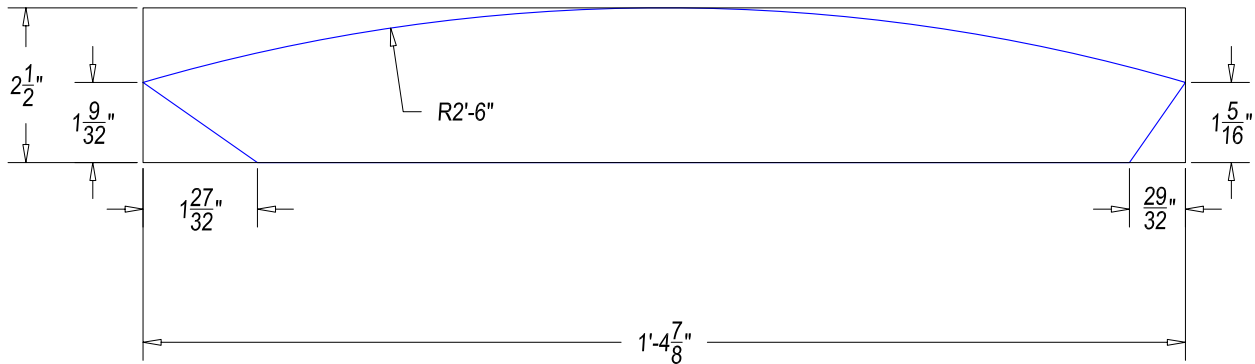
SECTION B-B

THIS AREA COVERED BY 1/2" THICK RIDIGID INSULATION
BOTH SIDES OF WOOFER MOUNTING PLATE

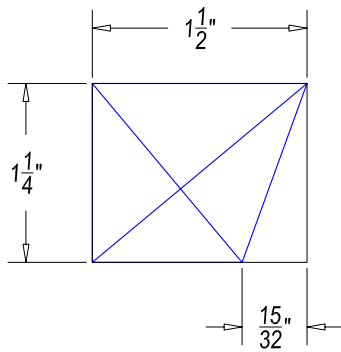
SEE SECTION A-A FOR NOTE ON THIS BLOCKING



SECTION C-C



DETAIL A



DETAIL B

GENERAL NOTES:

1. ORIGINAL CABINET WAS CONSTRUCTED FROM 5 PLY $\frac{5}{8}$ " PLYWOOD WITH BRACES MADE OF PINE
2. THE 2'6" RADIUS ON THE HORN WALL BLOCKING SEEMS TOO GOOD TO BE TRUE BUT THE EXPANSION TRACKS WITHIN THE LIMITS OF MY OLD EYES TO VERIFY CERTAINLY WITHIN $\frac{1}{32}$ " OR ANY REASONABLE CONSTRUCTION TOLERANCE USED BY THE ORIGINAL BUILDERS.
3. THE ORIGINAL CABINET WAS FASTENED WITH 6d COMMON NAILS AND GLUE WITH THE EXCEPTION OF THE REMOVABLE PORTION OF THE BACK PANEL
4. THE ORIGINAL USED A THIN FELT GASKET BETWEEN THE REMOVABLE PORTION OF THE BACK AND THE BRACES IT WAS ATTACHED TO.
5. THE $\frac{5}{8}$ " CURVED PLYWOOD HORN WALLS WILL NEED RELIEF CUTS TO TAKE SUCH A TIGHT RADIUS
6. I DID NOT REMOVE THE INSULATION COVERING THE SPACE BEHIND THE HORN WALLS. THE BRACING SHOWN IN THIS AREA IS AN EDUCATED GUESS BASED ON THE VISABLE FASTNERS