

Great Expectations Maternity Tunic

A simple, modest pattern for mothers-to-be



View A



View B

Great Expectations Maternity Tunic – Yardage Chart

🌀 **Sizing :** Women's size Small or Medium. Bust measurement should fall between approximately 30 – 40 inches. (*Finished dimensions – Bust: 45"; Width at hem: 54"; Length from shoulder to hem: 26"*)

🌀 **Fabric Yardage :** *If your fabric has a one-way design, follow the yardage as suggested below. The yardage given for "Fabric without a one-way design" involves adding a seam to the back tunic piece (instructions for this are included in the pattern). If you don't want a seam down the center back, follow the one-way design yardage regardless of your fabric.*

Also, if you want your waist tie made from your fashion fabric (versus ribbon), add an extra ¼ yard to your fabric requirements.

View A

Fabric with a one-way design:

45" (115cm) 1 ¾ yds. (1.6 meters)
60" (150cm) 1 ¼ yds. (1.2 meters)

Fabric without a one-way design:

45" (115cm) 1 ½ yds. (1.4 meters)
60" (150cm) 1 ¼ yds. (1.2 meters)

View B

Bodice – Fabric with a one-way design:

45" (115cm) 1 ½ yds. (1.4 meters)
60" (150cm) 1 yd. (1 meter)

Bodice – Fabric without a one-way design:

45" (115cm) 1 ¼ yds. (1.2 meters)
60" (150cm) 1 yd. (1 meter)

Contrasting Yoke and Armhole

45" (115cm) 5/8 yds. (0.6 meters)
60" (150cm) 3/8 yds. (0.4 meters)

Note: The yardages given above are for self-lining the contrasting yoke and armhole. If you wish to use a different fabric for the lining, you will need 3/8 yds each of the fashion fabric and the lining fabric.

🌀 Notions :

- Thread to match the tunic fabric, as well as the yoke (if sewing View B)
- 3/8 yds. Lightweight interfacing
- 1 ½ to 2 yds of ribbon for the waist tie (omit if making a self-fabric tie)
- 1/2 yard of embroidery floss that matches the color of the waist tie

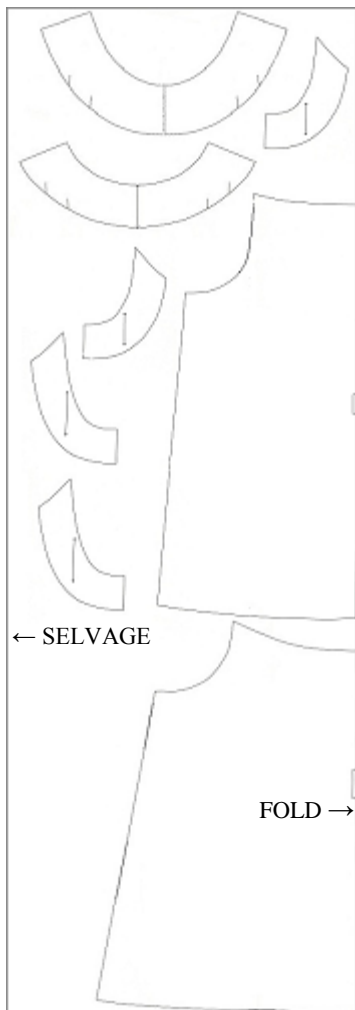
🌀 **Fabric Suggestions :** Lightweight woven cotton; linen; rayon; georgette.
Not suitable for plaids or stiff/heavy fabrics.

Great Expectation Maternity Tunic

Pattern Layouts

View A

45" One Way Design:

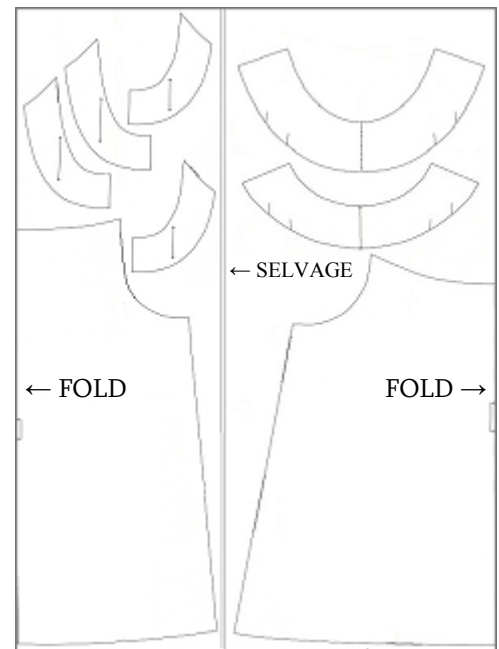


45" Without One Way Design:



Place Tunic Back 1" away from selvage and cut 1/2" away from the fold line.

60" With or Without One Way Design:



Open fabric and bring selvages toward center, creating a fold on either side of your yardage.

Great Expectation Maternity Tunic

Pattern Layouts

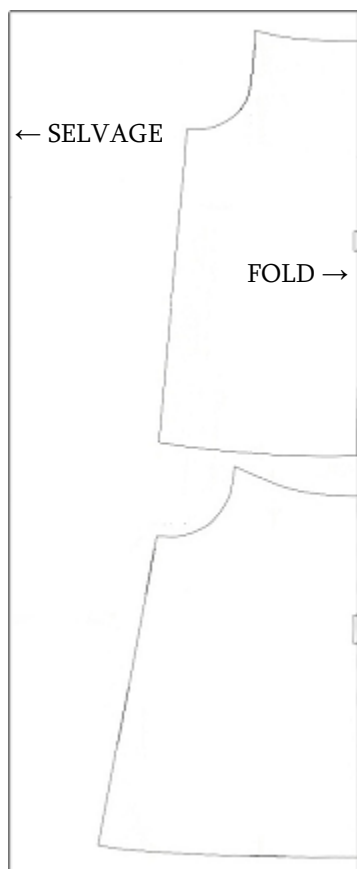
View B – *Contrasting Yoke and Armholes*

45" One Way Design:

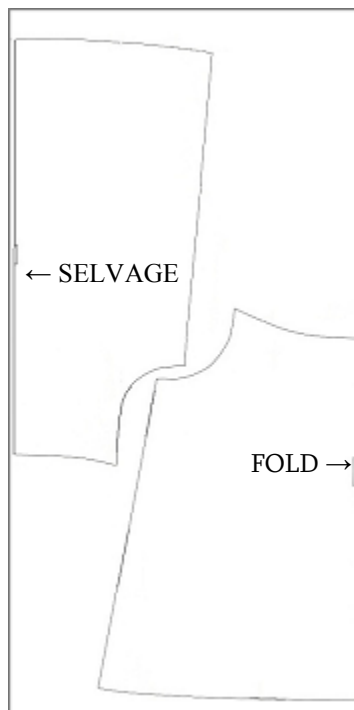
45" Without One Way Design:

60" With or Without One Way Design:

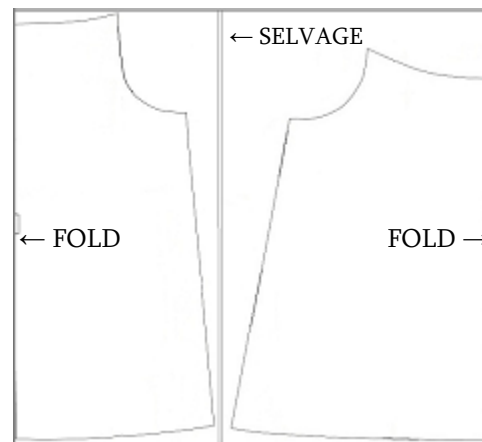
Fabric 1:



Fabric 1:



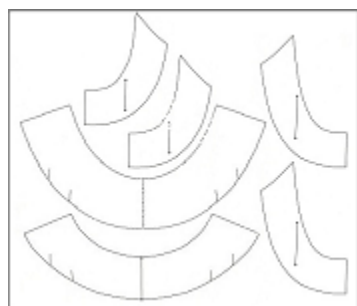
Fabric 1:



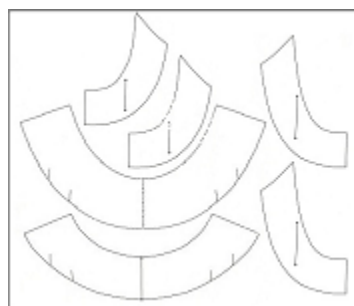
Open fabric and bring selvages toward center, creating a fold on either side of your yardage.

Place Tunic Back 1" away from selvage and cut ½" away from the fold line.

Fabric 2:



Fabric 2:



Fabric 2:



← SELVAGE FOLD →

← SELVAGE FOLD →

← SELVAGE FOLD →

Great Expectations Maternity Tunic

Pattern Instructions

Cutting Out the Pattern and Fabric

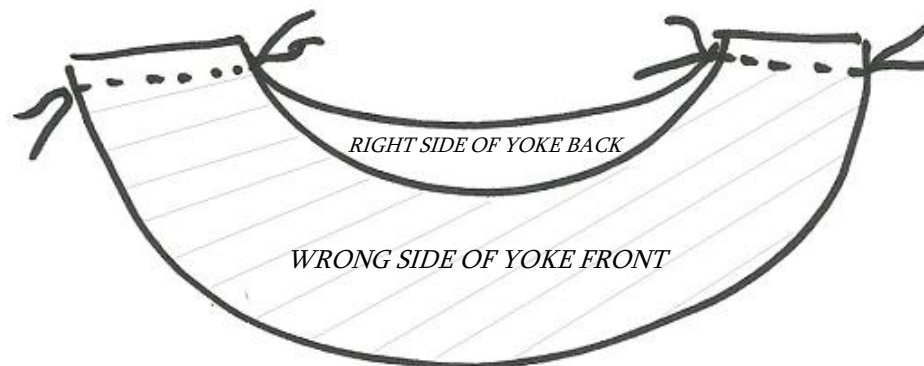
- ☞ Once you've assembled your e-pattern sheets, I recommend tracing the pattern onto *non-fusible* interfacing (my preference) or tissue paper. Computer paper and tape can be difficult to work with!
- ☞ When your pattern is ready, lay it out on your fashion fabric, following the fabric layout diagram that matches your chosen pattern view and fabric width.
- ☞ **NOTE:** All seam allowances are 1/4" *except* for the seams connecting the tunic front and tunic back, and the armhole front to the armhole back. These allowances will be noted in the instructions.

{ For an instructional tutorial complete with pictures, visit:

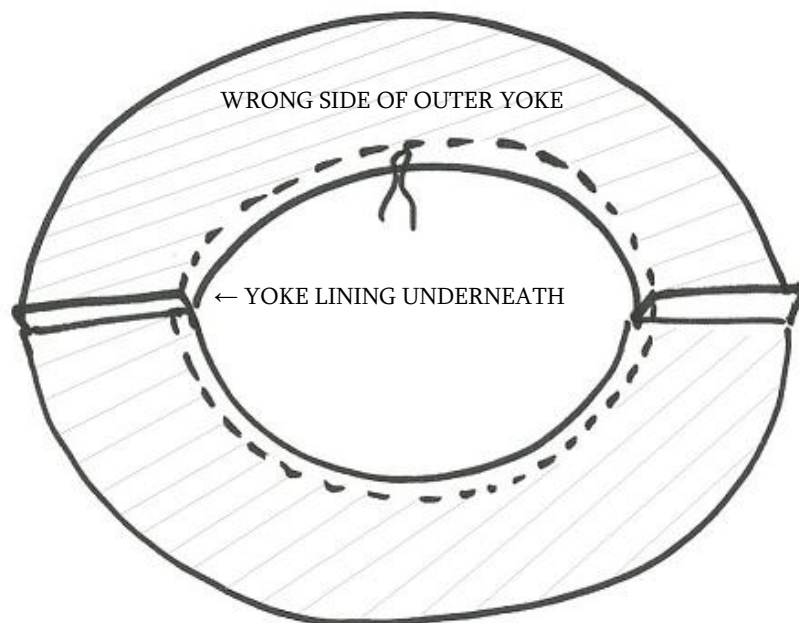
<http://thoughtsandthimbles.blogspot.com/2012/06/great-expectations-maternity-tunic.html> }

1. Assembling the Yoke

- To avoid markings on your fabric, baste a few stitches on your yoke front and back along the armhole placement guides (not necessary for the lining pieces).
- Cut one front yoke and one back yoke piece from lightweight interfacing. I like to use my already-cut fabric pieces as a guide by placing my interfacing with the fusible side up, and placing my fabric pieces right side up on top of the interfacing.
- Trim 1/4" off the *interfacing* (not the fabric) along the lower curved edge of each yoke piece.
- Iron the fusible interfacing onto the wrong side of the front and back yoke pieces.
- Sew the front and back yoke pieces right sides together at the shoulder seams, using a 1/4" seam allowance. Press shoulder seam open. Repeat for the yoke lining.



F) Sew the yoke to the yoke lining at the neckline, right sides together, matching shoulder seams and using a $\frac{1}{4}$ " seam allowance.

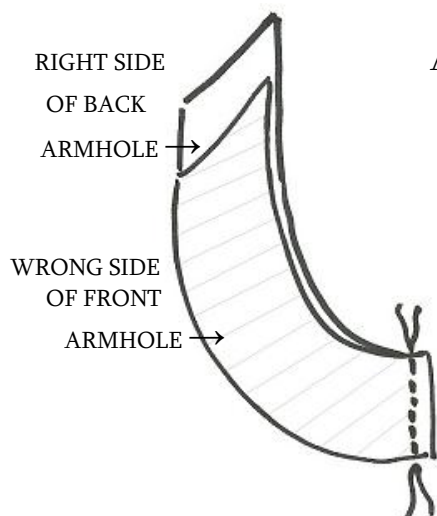


G) Clip curves at the neckline by making small cuts from the neckline edge to the stitching (but be careful not to clip your stitches!). Turn the yoke right side out and press neck edge.

H) Topstitch along neck edge $\frac{1}{4}$ " away from seam edge.

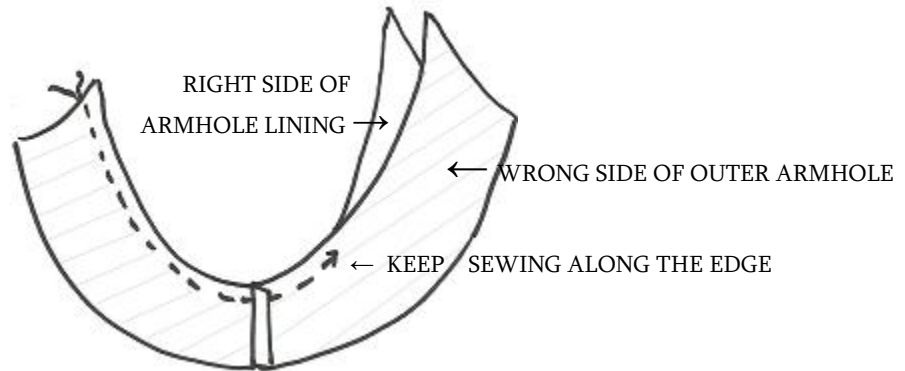
I) Press under $\frac{1}{4}$ " on the lower edge of the outer yoke, using your interfacing as a guide. Leave the yoke lining as-is. Set yoke aside.

2. Assembling the Armholes



A) Sew outer front and back armholes together along short straight edge, right sides together, using a $\frac{1}{2}$ " seam allowance. Press seams open. Repeat for armhole lining pieces. (*If your fabric does not have a right and wrong side, be careful that you don't sew two identical armholes!*)

- B) Sew each outer armhole to an armhole lining along the inner curved edge, right sides together, matching seams, and using a $\frac{1}{4}$ " seam allowance. Clip curves.

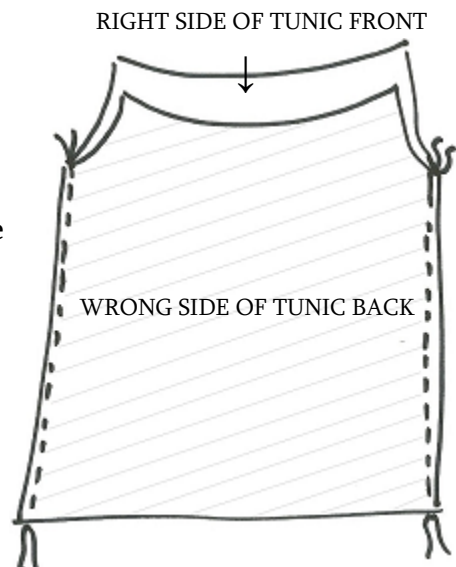


- C) Turn armholes right side out and press.
- D) Topstitch $\frac{1}{4}$ " away from edge along the inner curved edge of each armhole.
- E) Press under $\frac{1}{4}$ " on the lower curved edge of the armholes. If you have a serger, finish the lower curved edge of the armhole lining. Otherwise, leave the armhole linings as-is. Set armholes aside.

3. Assembling the Tunic

If you're using a fabric without a one-way design and opted for the fabric-saving option, you need to sew the back pieces along the center back, right sides together, using a $\frac{1}{2}$ " seam allowance. Finish the seam with a serger or zig-zag stitch, press the seam to one side, and continue as follows:

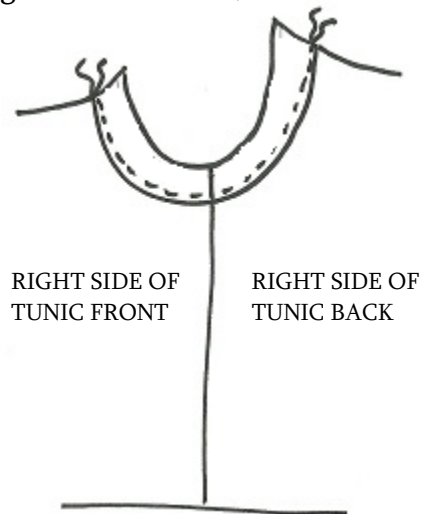
- A) Sew the front and back tunic pieces together along the side seams, right sides together, using a $\frac{1}{2}$ " seam allowance. Sew only along the straight edge of each side – don't sew the curved armholes together.
- B) Finish the side seams with a serger or zig-zag stitch. Press toward the tunic back.



4. Attaching the Armholes to the Tunic

FOR SERGED ARMHOLE LINING:

- A) The lower edge of each outer armhole has already been pressed under $\frac{1}{4}$ ". Sandwich the tunic between the outer armhole and the armhole facing, matching up the side seams and ensuring that the right side of the tunic and the outer armhole are facing up. The outer armhole should overlap the tunic by $\frac{1}{4}$ ". Pin generously, catching all layers (armhole, tunic, and armhole lining).
- B) Topstitch along the lower edge of the armhole, as close to the pressed-under edge as possible.



- C) Topstitch again, this time $\frac{1}{4}$ " away from the lower armhole edge. If the tunic and armhole are a bit uneven, trim the excess fabric. If necessary, grade the top of the tunic to keep a gentle curve along the top edge of the tunic.

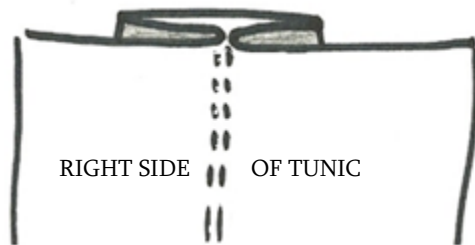
FOR UNFINISHED ARMHOLE LINING:

- A) The lower edge of each outer armhole has been pressed under $\frac{1}{4}$ ". Layer the armhole facing on top of the tunic, matching up the side seams and ensuring that the right side of the tunic and the outer armhole are facing up. The outer armhole should overlap the tunic by $\frac{1}{4}$ ". Pin generously.
- B) Topstitch along the lower edge of the armhole, as close to the pressed-under edge as possible (*See previous illustration above*). Be sure to keep the armhole lining free as you sew.
- C) On the inside, fold under the armhole lining and pin to the seam allowance. Whipstitch the lining in place, making sure your stitches don't penetrate through to the outside.
- D) Topstitch again, this time $\frac{1}{4}$ " away from the lower armhole edge. If the tunic and armhole are a bit uneven, trim the excess fabric. If necessary, grade the top of the tunic to keep a gentle curve along the top edge of the tunic.

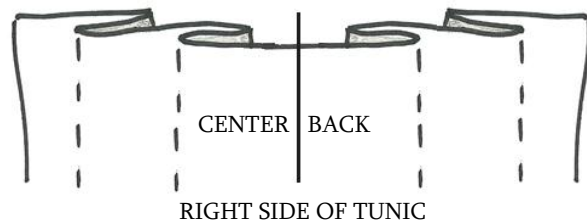
5. Attaching the Yoke

- A) The tunic is attached to the yoke in the same manner as the armholes. Match up the armholes to the markings indicated on the front and back yoke pattern pieces. Pin in place, overlapping the edge of the yoke $\frac{1}{4}$ " over the armholes.
- B) Match the center front of the tunic to the center front of the yoke. Pin in place. Repeat for the back.
- C) Pleat the excess fabric in the front and back, pinning to the yoke to secure. You can arrange the pleats however you like, but my preference for the front is either three box pleats or four to six knife pleats (two or three in each direction). For the back, I prefer four knife pleats (two in each direction). See the illustrations below to see how to make each type of pleat. Before you sew, make sure your pleats are the same size (or as close as possible) and that they're evenly spaced.

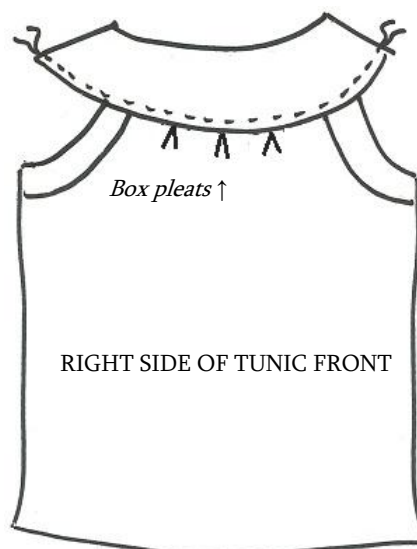
BOX PLEAT
(Folds should be touching in the center of the pleat)



KNIFE PLEATS
(This is my preferred arrangement for the tunic back; it also works for the front, if desired)



- D) Once the tunic is pinned in place, topstitch around the edge of the yoke, as close to the pressed-under edge as possible. *Be sure to keep the yoke lining free as you sew.* Sew all around the yoke, even over the shoulder areas (which are not pinned to the tunic).



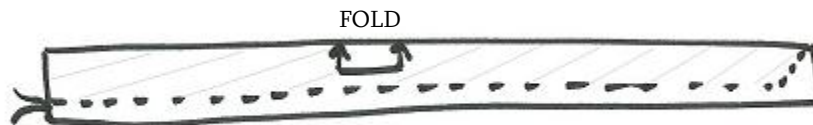
- E) On the inside, fold under the yoke lining and pin to the seam allowance. Whipstitch the yoke lining in place, making sure your stitches don't penetrate through to the outside (especially in the shoulder area).
- F) Topstitch the yoke again, this time $\frac{1}{4}$ " away from the lower yoke edge.

6. Hemming the Tunic

- A) If the tunic is uneven at the bottom side seams, trim the excess fabric.
- B) Press the edge of the tunic under $\frac{1}{4}$ " inch. Press under again, this folding under 1".
- C) Stitch close to the folded edge.

7. *Optional Fabric Tie*

- A) If you chose to make a fabric tie instead of using ribbon, decide how wide you want your finished tie to be. Double that measurement and add 1" for seam allowance. For instance, if I want a 1" tie, I would double it (2") and add an inch (total of 3" wide).
- B) Cut two pieces of fabric to that width. Sew the two pieces right sides together along one of the short edges to make one long strip. Decide how long you want the tie to be, and trim down to the desired length.
- C) Fold your strip in half, right sides together, and stitch along the long side $\frac{1}{2}$ " from the cut edge. Sew along one short edge (either straight across or at an angle), but leave the other end open.



- D) Trim seam allowance to $\frac{1}{4}$ " and clip corners. Turn your tie right side out and press. Fold raw edges of opening inward, then slipstitch closed.

8. *Optional Belt Guides*

- A) To make guides for your belt similar to those on purchased garments, cut ½ yard of embroidery floss into two 9” pieces. Take one length and divide the six strands into three sets of two strands. Tie all of the strands in a knot about two inches from the end, and then braid the remaining length of floss. How much you have to braid depends on the width of your belt – you need double the width of your belt, plus some extra to hide in the seam allowance. Don’t knot the other end of the braid. Repeat the braiding process for the other piece of floss.
- B) Now that your guides are ready, try on your tunic and use a safety pin to mark on the side seam where you want the *top* edge of your belt to sit. Take the tunic off and thread the unknotted end of one of your belt guides into a large embroidery needle.
- C) From the inside, pass your needle through the seam allowance and side seam, bringing the needle out at the point marked by your safety pin and catching the knot in the seam allowance. Insert the needle back into the same place and bring it out through the seam allowance. Making sure that your loop is the right size on the outside of the tunic, secure both ends of the belt guide in the seam allowance to ensure that the loop doesn’t pull in or out of the seam.



Now go show off that baby bump!

I hope you enjoy this pattern!

If you have any questions, please feel free to contact me via:

<http://www.ThoughtsAndThimbles.blogspot.com>

With Love,

Shannon

Please remember, this pattern is copyright protected and for personal use only.

The pattern itself may not be reproduced or sold without permission, and the same goes for any garments made from the pattern. If you wish to sell garments made from the pattern, please contact me!