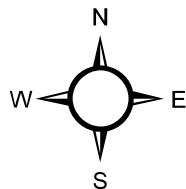


City of Toronto Census Tracts 2005

Median Household Income

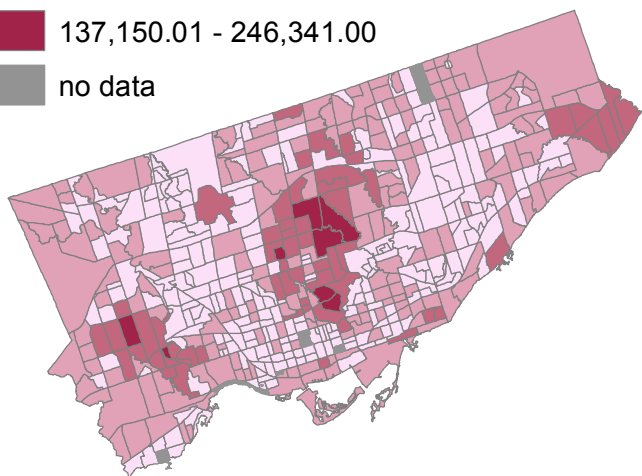
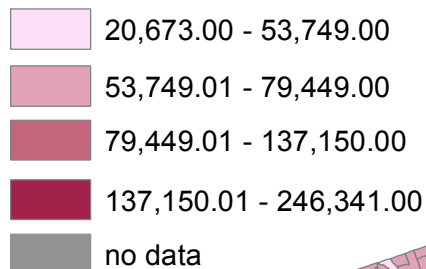


0 5 10 20 Kilometers

1 inch = 13 km
UTM 17N, 1983

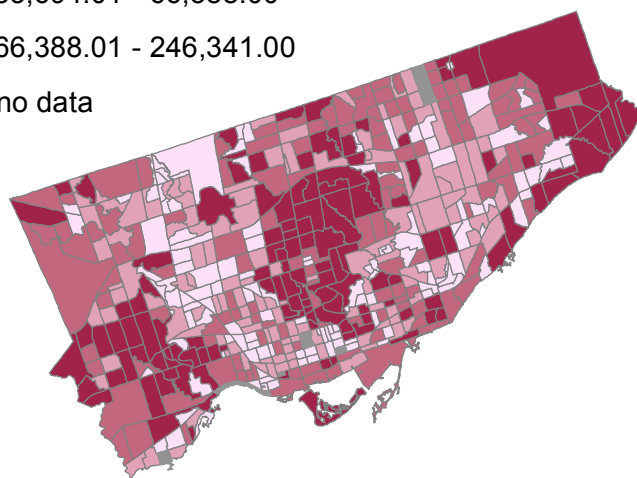
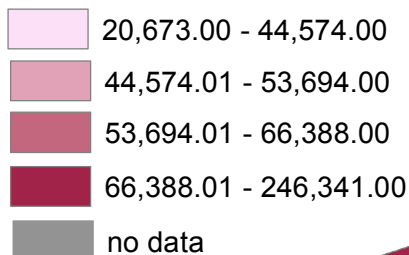
Household Income

Natural Break Classification



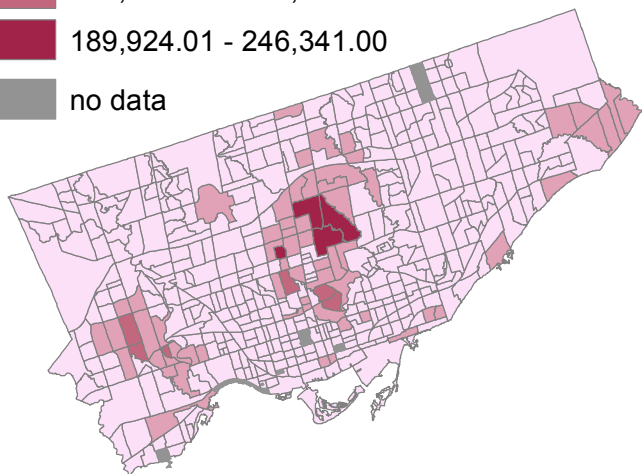
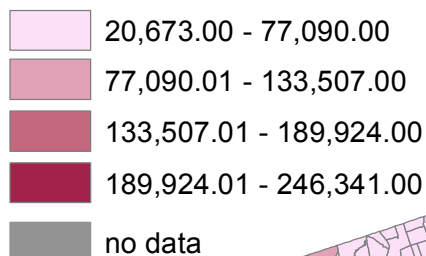
Household Income

Quantile Classification



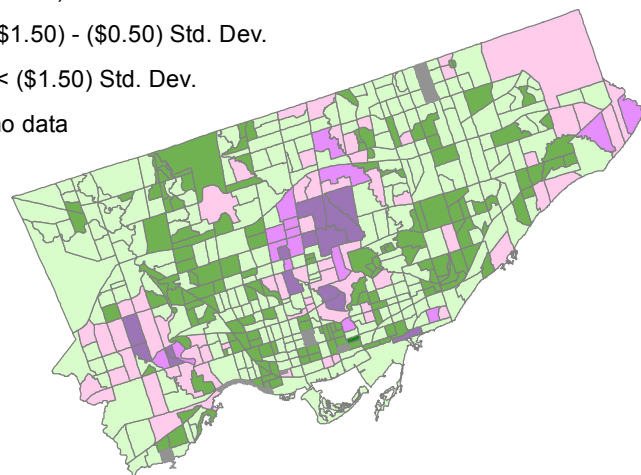
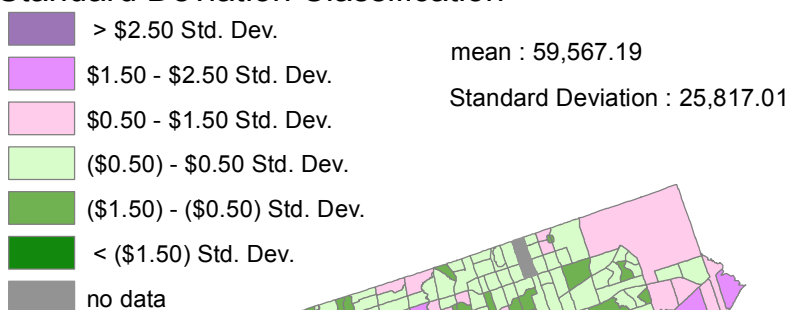
Household Income

Equal Interval Classification



Household Income

Standard Deviation Classification



Source: Statistics Canada,
City of Toronto census tracts 2006,
income data based on year 2005 earnings
as reported on income tax returns.

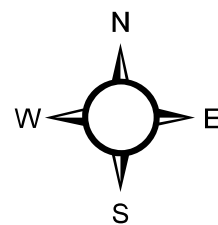
Alicia Zorzetto
July 13, 2011

Families with after tax income over \$100 000

City of Toronto Census Tracts 2005

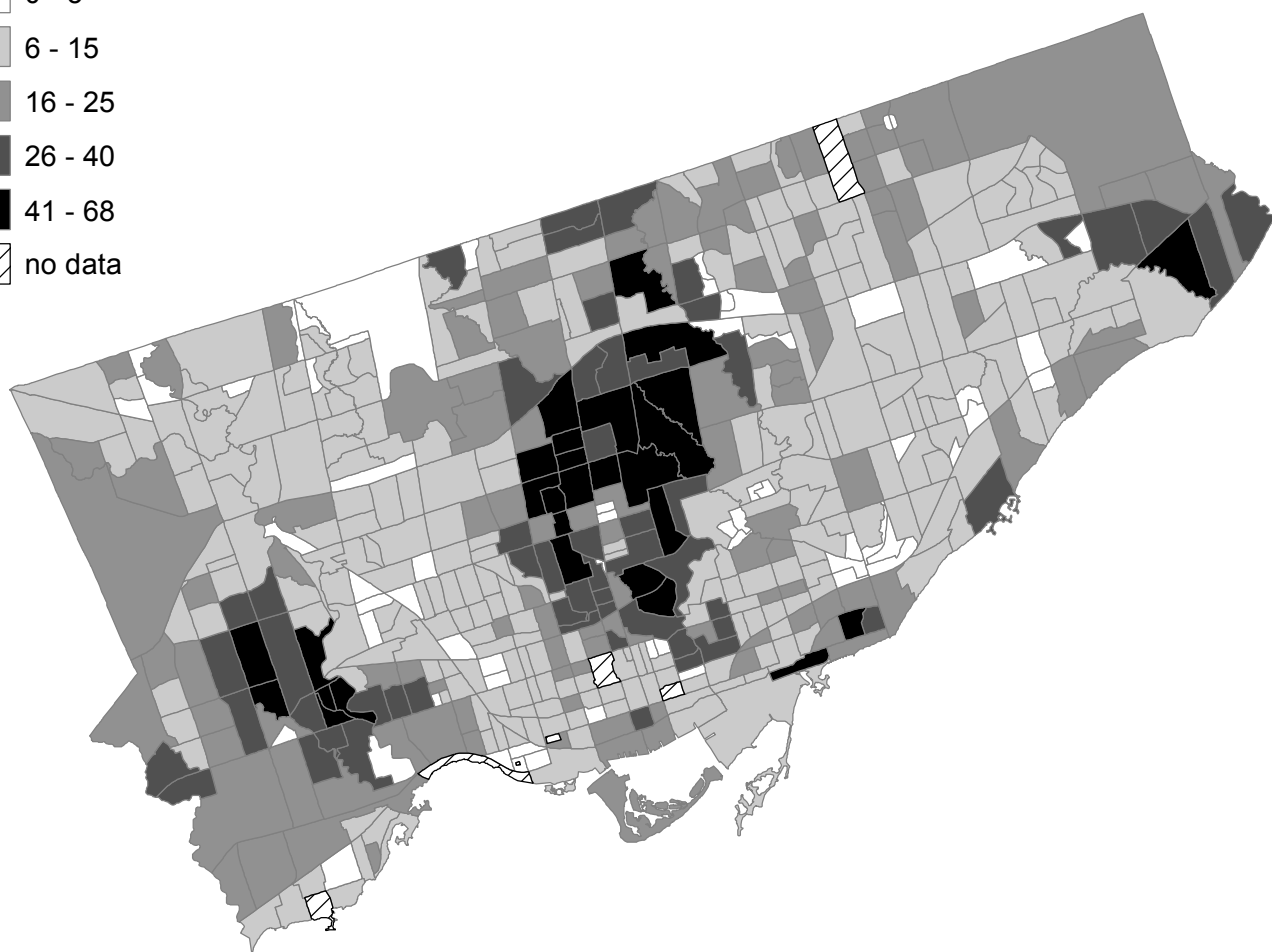
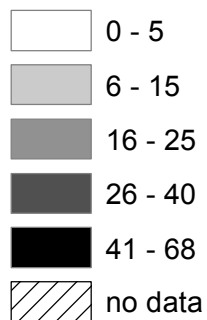
0 3.5 7 14 Kilometers

1 inch = 6 km



UTM 17N, 1983

Percentage of Households



Source: Statistics Canada,
City of Toronto census tracts 2006,
income data based on year 2005 earnings
as reported on income tax returns.

Alicia Zorzetto
July 13, 2011

Lab Assignment Module 6- Alicia Zorzetto
Niagara Escarpment Plan
Caledon, Ontario
Section from Map 4 of Niagara Escarpment Plan
Country of Dufferin: Township of Mono
Ontario Ministry of Environment and Energy
Niagara Escarpment Commission
1994
scale 1:3 000

Legend

— Rivers

■ Ponds

land use

New

■ Escarpment Protection Area

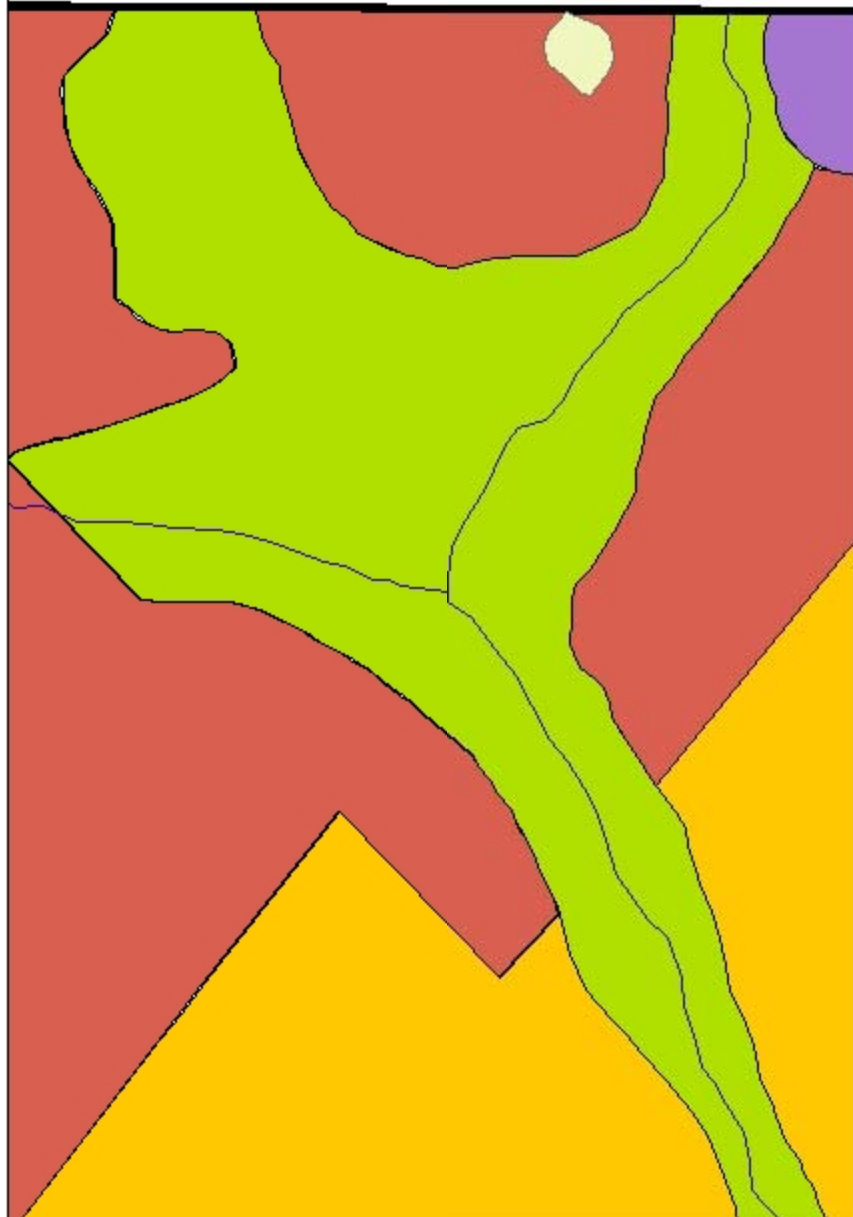
■ Escarpment Natural Area

■ Escarpment Rural Area

■ Mineral Resource Extraction Area

■ Boundary

Northwest

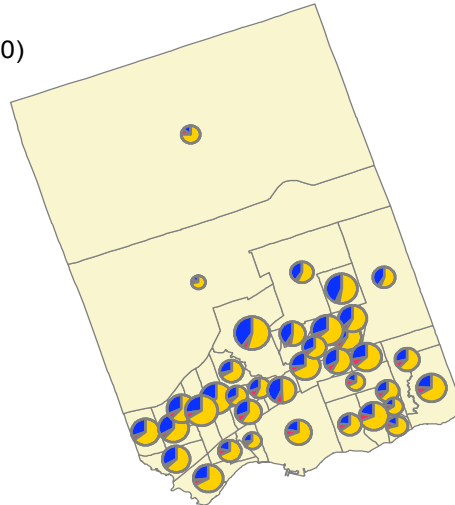
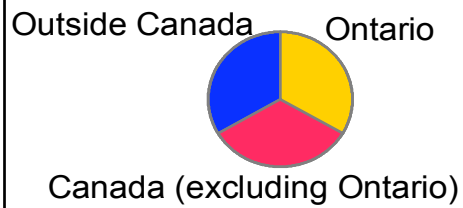


Southeast

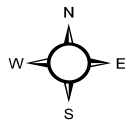
Pickering Ontario

Data From 2006 Census- Statistics Canada

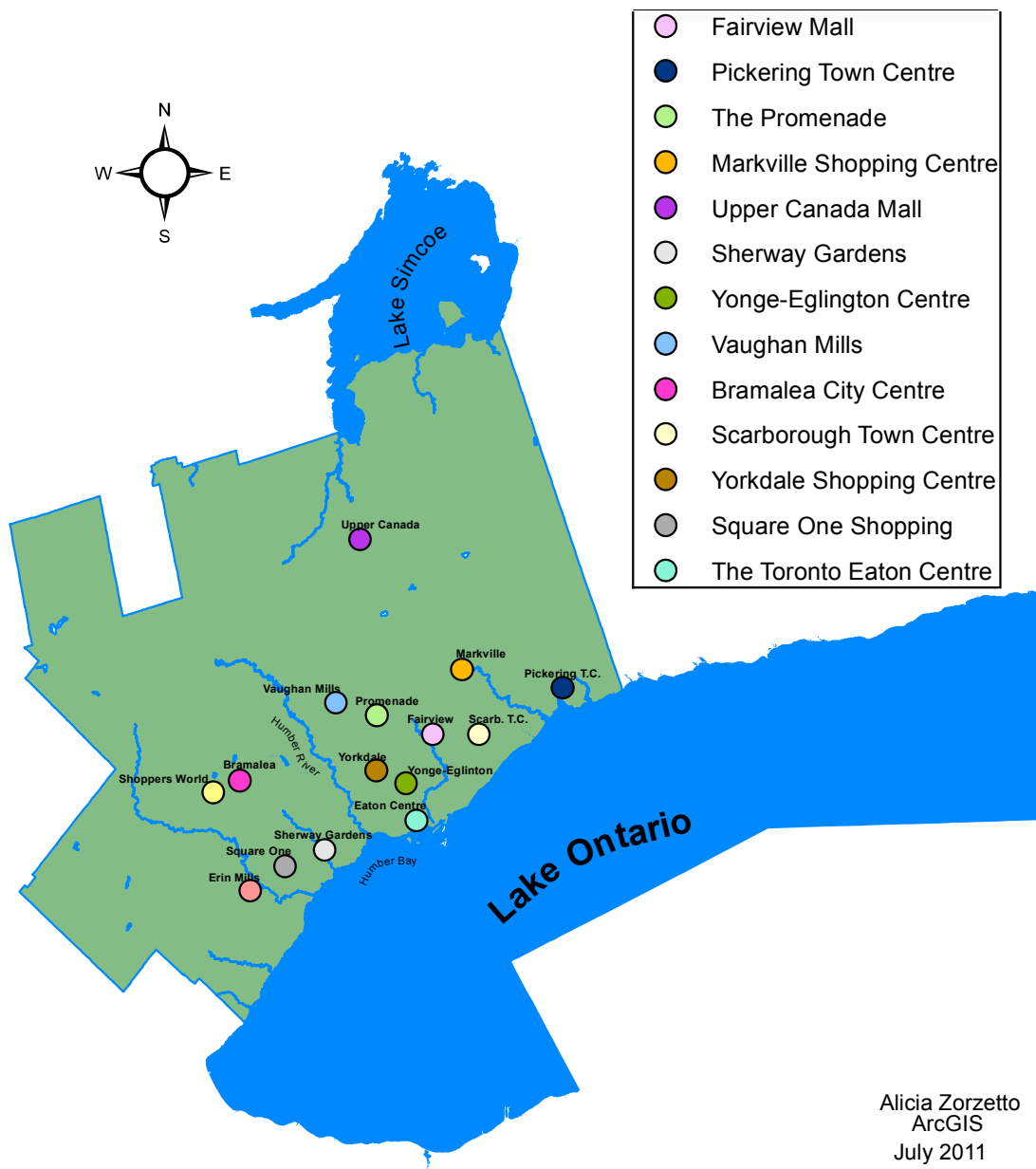
Birth Place (total population 67,000)



UTM 17N



Alicia Zorzetto
July 12, 2011



Alicia Zorzetto
ArcGIS
July 2011