

PPAI 187246 ASI 37461

PPAI 187246 ASI 37461

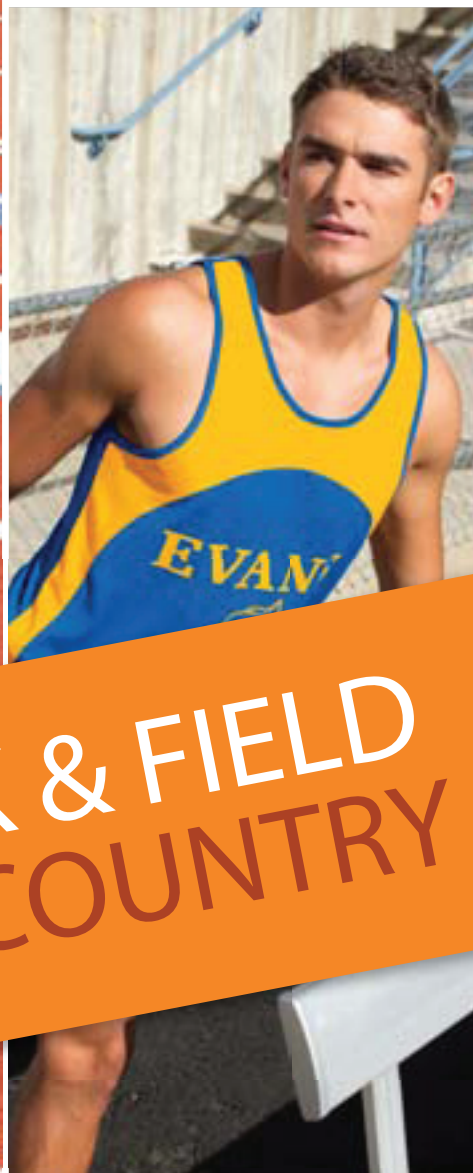
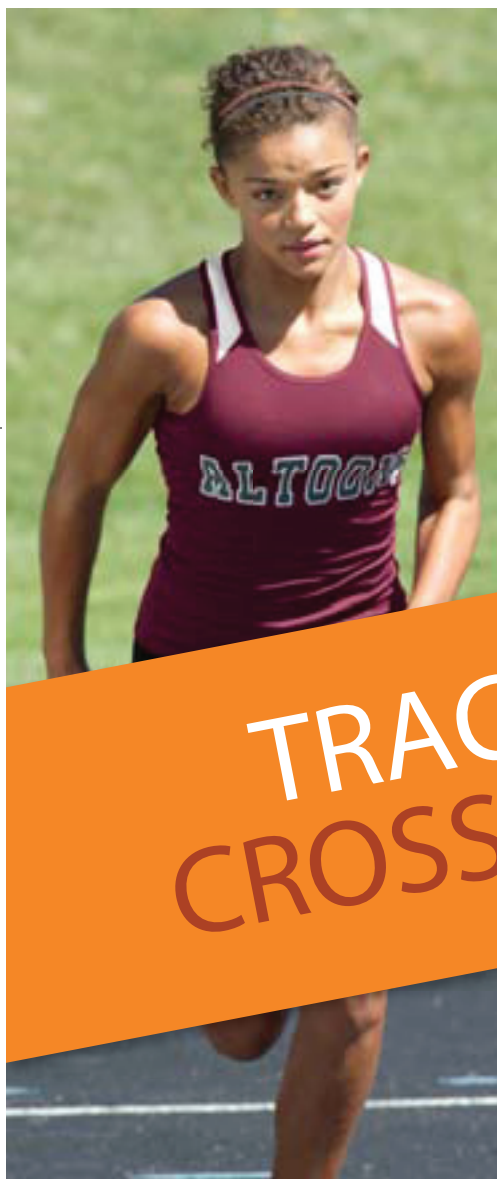


MARKETING SOLUTIONS, INC.

[wardpromotional.com](http://wardpromotional.com)

209.549.2765

**S P O R T S W E A R ®**



**TRACK & FIELD  
CROSS COUNTRY**

**2012**

[www.WardPromotional.com](http://www.WardPromotional.com)

PPAI 187246 ASI 37461

PPAI 187246 ASI 37461

# NEW ONLINE DIGITAL RESOURCES

## CUSTOM FLYER DESIGNER



+ Select up to 6 Styles



+ Choose Colors + Decorate



- + Personalize Flyer
- + Save, Email or Print for Presentation
- + Optional Order Form

**Dye Migration.** Augusta Sportswear® cannot be held responsible for ink migration on polyester styles that can be attributed to poor ink quality or processing at temperatures exceeding those recommended by the ink manufacturer. **Dyeing.** Because of the variability of the dyeing process, we cannot guarantee perfect continuity of shade across all styles or from one order to the next. Jackets and pants are cut and offered for sale as separates, not as sets. **Decorating.** All embellishment is for photography and catalog purposes only. All styles are sold blank with no decorations applied. Augusta Sportswear® does not offer decorating services.



## PRESELECTED UNIFORM BUILDER



- + Select Uniform
- + Choose Color
- + Personalize
- + Optional order form
- + Save, Email or Print for Presentations

2 TOOLS. MULTIPLE OPTIONS.  
SIMPLE. FAST. EFFECTIVE.  
GET STARTED TODAY AT [augustasportswear.com](http://augustasportswear.com)

**HIGH PERFORMANCE FEATURES & BENEFITS:**  
Look for these icons next to the style number to denote features and benefits.



### WATER RESISTANT

Resists rain and water to keep the body protected and dry.



### 4-WAY STRETCH

Stretch properties allow for increased mobility.



### MOISTURE MANAGEMENT

Fabric wicks moisture away keeping the body cool and dry.



### FITTED



### LOOSE FIT



### ODOR RESISTANT

**NEW SIZES AND COLORS.** All new sizes and colors appear in **BOLD**.





340

345  
5-INCH  
(Youth  
Inseam  
Graded)



342

347  
4-INCH

340|341



#### VELOCITY TRACK JERSEY

100% polyester wicking knit • Heat sealed label • Self-fabric binding at neck and armholes • Contrast color front insert.

**340 ADULT:** S-3XL List Price **13.00** (Upcharge for 2XL-3XL)

**341 YOUTH:** S-L List Price **12.00**



345|346



#### VELOCITY TRACK SHORT

100% polyester wicking knit • Heat sealed label • Covered elastic waistband • Matching inner brief with leg elastic • Contrast color side inserts • Side vents • 5-inch inseam • Self-fabric binding on hem • Youth inseam graded.

**345 ADULT:** S-3XL List Price **15.10** (Upcharge for 2XL-3XL)

**346 YOUTH:** S-L List Price **13.00**

342

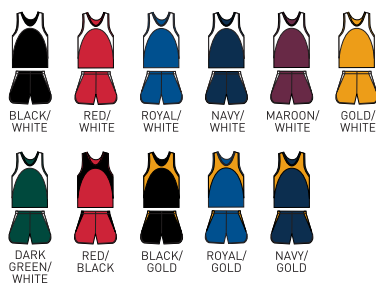


#### LADIES VELOCITY TRACK JERSEY

100% polyester wicking knit • Ladies' fit • Heat sealed label • Self-fabric binding at neck and armholes • Contrast color front insert.

**342 LADIES:** XS-2XL List Price **13.40** (Upcharge for 2XL)

**For Youth sizes, see style 341.**



347



#### LADIES VELOCITY TRACK SHORT

100% polyester wicking knit • Ladies' fit • Heat sealed label • Covered elastic waistband with inside drawcord • Matching inner brief with leg elastic • Contrast color side inserts • Side vents • 4-inch inseam • Self-fabric binding on hem.

**347 LADIES:** XS-2XL List Price **15.10** (Upcharge for 2XL)

**For Youth sizes, see style 346.**

# 311|312



## WICKING TANK WITH SHOULDER INSERT

Colors are 100% nylon tricot with wicking finish • White is 100% polyester tricot with wicking finish • Heat sealed label • Self-fabric binding at neck and armholes • Contrast color shoulder inserts • Youth has two-ply front panel hemmed separately for embellishment.

**311 ADULT:** S-3XL List Price **13.90** (Upcharge for 2XL-3XL)

**312 YOUTH:** S-L List Price **13.00**



311



327

5-INCH  
(Youth  
Inseam  
Graded)

# 327|328



## WICKING TRACK SHORT WITH SIDE INSERT

Colors are 100% nylon tricot with wicking finish • White is 100% polyester tricot with wicking finish • Covered elastic waistband • Matching inner brief with leg elastic • Contrast color side inserts • Side vents • 5-inch inseam • Self-fabric binding on hem • Youth inseam graded.

**327 ADULT:** S-3XL List Price **15.10** (Upcharge for 2XL-3XL)

**328 YOUTH:** S-L List Price **13.60**

313



327

5-INCH  
(Youth  
Inseam  
Graded)

# 313



## LADIES WICKING TANK WITH SHOULDER INSERT

Colors are 100% nylon tricot with wicking finish • White is 100% polyester tricot with wicking finish • Ladies' fit • Heat sealed label • Self-fabric binding at neck and armholes • Contrast color shoulder inserts • Two-ply front panel hemmed separately for embellishment.

**313 LADIES:** XS-2XL List Price **15.20** (Upcharge for 2XL)

**For Youth sizes, see style 312.**





315

316

LADIES  
FIT

315|316|317



#### WICKING TANK WITH SIDE PANEL

Colors are 100% nylon tricot with wicking finish • White is 100% polyester tricot with wicking finish • Ladies' fit on style 316  
• Heat sealed label • Self-fabric binding at neck and armholes  
• Contrast color side panels • Ladies' and Youth have two-ply front panel hemmed separately for embellishment.

**315 ADULT:** S-3XL List Price **13.40** (Upcharge for 2XL-3XL)  
**316 LADIES:** XS-2XL List Price **15.40** (Upcharge for 2XL)  
**317 YOUTH:** S-L List Price **13.00**



BLACK/WHITE RED/WHITE ROYAL/WHITE NAVY/WHITE MAROON/WHITE PURPLE/WHITE DARK GREEN/WHITE



5-INCH  
(Youth  
Inseam  
Graded)

325|326



#### LONGER LENGTH WICKING TRACK SHORT

100% nylon tricot with wicking finish • Covered elastic waistband  
• Matching inner brief with leg elastic • Side vents • 5-inch inseam • Self-fabric binding on hem • Youth inseam graded.

**325 ADULT:** S-3XL List Price **14.20** (Upcharge for 2XL-3XL)  
**326 YOUTH:** S-L List Price **12.10**



BLACK RED ROYAL NAVY MAROON GOLD PURPLE DARK GREEN



301

306

LADIES  
FIT

301|306|308



#### WICKING TANK

Colors are 100% nylon tricot with wicking finish • White is 100% polyester tricot with wicking finish • Ladies' fit on style 306  
• Heat sealed label • Self-fabric binding at neck and armholes  
• Ladies' and Youth have two-ply front panel hemmed separately for embellishment.

**301 ADULT:** S-3XL List Price **11.50** (Upcharge for 2XL-3XL)  
**306 LADIES:** S-2XL List Price **13.40** (Upcharge for 2XL)  
**308 YOUTH:** S-L List Price **12.30**



BLACK WHITE RED ROYAL NAVY MAROON GOLD PURPLE DARK GREEN



2½-INCH

322



#### WICKING TRACK SHORT

100% nylon tricot with wicking finish • Covered elastic waistband  
• Matching inner brief with leg elastic • Side vents • 2½-inch inseam • Self-fabric binding on hem.

**322 ADULT:** XS-3XL List Price **12.90** (Upcharge for 2XL-3XL)



BLACK RED ROYAL NAVY MAROON GOLD PURPLE DARK GREEN





RACERBACK

1280



MESH INSERTS

1210

1280|1281



#### LADIES INFINITY JERSEY

90% polyester/10% spandex knit • 93% polyester/7% spandex mesh inserts • Odor resistant • Wicks moisture • Ladies' fit • Heat sealed label • Self-fabric binding at neck and armholes • White poly/spandex mesh shoulder inserts for breathability • Racerback styling.

**1280 LADIES:** S-2XL List Price **19.90** (Upcharge for 2XL)

**1281 GIRLS:** S-L List Price **17.90**



BLACK/  
WHITE



RED/  
WHITE



ROYAL/  
WHITE



NAVY/  
WHITE



MAROON/  
WHITE



PURPLE/  
WHITE



DARK  
GREEN/  
WHITE



WHITE/  
BLACK



WHITE/  
RED



WHITE/  
ROYAL



WHITE/  
NAVY

1210|1211



#### LADIES POLY/SPANDEX 2.5" SHORT

90% polyester/10% spandex knit • Odor resistant • Wicks moisture • Ladies' fit • Heat sealed label • Low rise • Covered elastic waistband • No side seams • 2½-inch inseam.

**1210 LADIES:** S-2XL List Price **15.00** (Upcharge for 2XL)

**1211 GIRLS:** XS-L List Price **14.00** **NEW GIRLS SIZES**



COLUMBIA  
BLUE  
NEW



ORANGE  
NEW



MAROON  
NEW



GOLD  
NEW



PURPLE  
NEW



KELLY  
NEW



DARK  
GREEN  
NEW



BLACK



RED



ROYAL



NAVY



RACERBACK

707|708



#### LADIES POLY/SPANDEX RACERBACK TANK

90% polyester/10% spandex knit • 100% polyester wicking knit shelf bra • Odor resistant • Wicks moisture • Ladies' fit • Heat sealed label • Contrast color self-fabric binding at neck and armholes • Contrast two-color side panels • Racerback styling.

**707 LADIES:** S-2XL List Price **22.70** (Upcharge for 2XL)

**708 GIRLS:** S-L List Price **19.50**



BLACK/  
WHITE/  
SILVER



NAVY/  
WHITE/  
SILVER



RED/  
WHITE/  
BLACK



ROYAL/  
WHITE/  
BLACK



WHITE/  
SILVER/  
BLACK



742|743

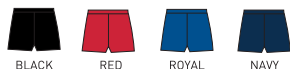


### LADIES POLY/SPANDEX 4" SHORT

90% polyester/10% spandex knit • Odor resistant • Wicks moisture • Ladies' fit • Heat sealed label • Flatlock seamed construction for extra comfort • Low rise • Covered elastic waistband • No side seams • Two-ply gusset • 4-inch inseam • Girls inseam graded.

**742 LADIES:** S-2XL List Price **15.80** (Upcharge for 2XL)

**743 GIRLS:** S-L List Price **13.70**



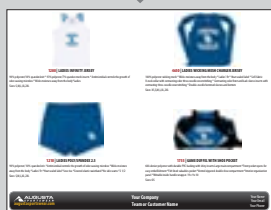
BLACK

RED

ROYAL

NAVY

### DESIGN A CUSTOM FLYER



at [augustasportswear.com](http://augustasportswear.com)

START  
DESIGNING  
TODAY AT  
[augustasportswear.com](http://augustasportswear.com)



1210|1211



### LADIES POLY/SPANDEX 2.5" SHORT

90% polyester/10% spandex knit • Odor resistant • Wicks moisture • Ladies' fit • Heat sealed label • Low rise • Covered elastic waistband • No side seams • 2½-inch inseam.

**1210 LADIES:** S-2XL List Price **15.00** (Upcharge for 2XL)

**1211 GIRLS:** XS-L List Price **14.00** **NEW GIRLS SIZES**



COLUMBIA  
BLUE  
NEW

ORANGE  
NEW

MAROON  
NEW

GOLD  
NEW

PURPLE  
NEW

KELLY  
NEW

DARK  
GREEN  
NEW

BLACK

RED

ROYAL

NAVY

1265|1266



### LADIES JUNIOR FIT PULSE TEAM SHORT

Shell is 100% polyester micropoly • Inserts are 100% polyester mesh • Lining is 100% polyester wicking crepe • Liner wicks moisture • Junior fit • Low rise • Covered elastic waistband with inside drawcord • Inner brief with leg elastic • Inside key pocket • Mesh insert side panel • 4-inch inseam • Contrast self-fabric binding on side panels and hem • Girls inseam graded.

**1265 LADIES JUNIOR FIT:** S-2XL List Price **17.80** (Upcharge for 2XL)

**1266 GIRLS:** S-L List Price **16.70**



POWER  
YELLOW/  
WHITE/  
BLACK  
NEW

BLACK/  
WHITE/  
POWER  
YELLOW  
NEW

PURPLE/  
WHITE/  
POWER  
YELLOW  
NEW

RED/  
WHITE/  
BLACK

ROYAL/  
WHITE/  
BLACK

ORANGE/  
WHITE/  
BLACK

NAVY/  
WHITE/  
BLACK

MAROON/  
WHITE/  
BLACK

PURPLE/  
WHITE/  
BLACK

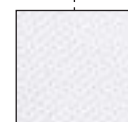
DARK  
GREEN/  
WHITE/  
BLACK

POWER  
PINK/  
WHITE/  
BLACK

BLACK/  
BLACK/  
WHITE



- + Built-In Brief
- + Inside Key Pocket
- + Low Rise



MESH INSERT



**4620**



**WICKING MESH LONG SLEEVE JERSEY**

100% polyester wicking mesh • Heat sealed label • Rib-knit collar • Contrast color side inserts • Contrast color topstitching on raglan sleeves.

**4620 ADULT:** XS-3XL List Price **29.40** (Upcharge for 2XL-3XL)



**4600|4601**



**WICKING LONG SLEEVE WARMUP SHIRT**

100% polyester wicking mesh • Heat sealed label • Tipped rib-knit lap-over collar • Contrast color accent piping on front shoulder • Contrast color sleeve and side inserts • Set-in sleeves • Self-fabric cuffs.

**4600 ADULT:** XS-3XL List Price **29.40** (Upcharge for 2XL-3XL)

**4601 YOUTH:** S-L List Price **27.30**



**4650**



**LADIES WICKING MESH CHARGER JERSEY**

100% polyester wicking mesh • Ladies' fit • Heat sealed label • Self-fabric V-neck collar with contrast color three-needle coverstitching • Contrast color front and back sleeve inserts with contrast three-needle coverstitching.

**4650 LADIES:** XS-2XL List Price **24.20** (Upcharge for 2XL)



**SIDE SEAM POCKETS**

**3475|3476**



**MICRO POLY TWO-COLOR JACKET**

Outer shell of 100% micro polyester • Body lined with 100% polyester mesh • Sleeves lined with 100% polyester taffeta • Front zipper • Accent piping on front and sleeves • White inserts on front • Set-in sleeves • Front pockets • Elastic cuffs • Open bottom with elastic drawcord and cordlock.

**3475 ADULT:** S-3XL List Price **39.60** (Upcharge for 2XL-3XL)

**3476 YOUTH:** S-L List Price **36.70**



**620|621**



**MICRO POLY PANT/LINED**

Outer shell of 100% micro polyester • Upper leg lined with 100% polyester mesh • Lower leg lined with 100% polyester taffeta • Covered elastic waistband with inside drawcord • Side seam pockets • White accent piping at side seams • Zipper with gusset on outside lower leg • Single-needle hemmed bottom with adjustable tab and snaps.

**620 ADULT:** XS-3XL List Price **35.80** (Upcharge for 2XL-3XL)

**621 YOUTH:** S-L List Price **32.70**







COMPANION TO  
STYLE 3710



AVAILABLE  
IN TALL\*

SIDE SEAM  
POCKETS



3700



#### PREMIER JACKET

Outer shell of 100% polyester diamond tech • Lined with 100% polyester taffeta  
• Front zipper • Contrast color shoulder and front inserts • Set-in sleeves • Front  
pockets • Elastic cuffs • Open bottom with elastic drawcord and cordlock.

**3700 ADULT:** XS-3XL List Price **41.90** (Upcharge for 2XL-3XL)



3705



#### SOLID PANT

Outer shell of 100% polyester diamond tech • Lined with 100% polyester taffeta  
and 100% polyester mesh • Covered elastic waistband with inside drawcord  
• Side seam pockets • Zipper on outside lower leg • Single-needle hemmed bottom.

**3705 ADULT:** XS-3XL List Price **37.90** (Upcharge for 2XL-3XL & Tall sizes)

**ADULT TALL:** LT-3XLT

\*Available in Tall



AVAILABLE  
IN TALL\*

SIDE SEAM  
POCKETS



3710



#### LADIES PREMIER JACKET

Outer shell of 100% polyester diamond tech • Lined with 100% polyester taffeta  
• Ladies' fit • Front zipper • Contrast color shoulder and front inserts • Set-in sleeves  
• Front pockets • Elastic cuffs • Open bottom with elastic drawcord and cordlock.

**3710 LADIES:** XS-2XL List Price **41.90** (Upcharge for 2XL)



3715



#### LADIES SOLID PANT

Outer shell of 100% polyester diamond tech • Lined with 100% polyester taffeta  
and 100% polyester mesh • Ladies' fit • Covered elastic waistband with inside  
drawcord • Side seam pockets • Zipper on outside lower leg • Single-needle  
hemmed bottom.

**3715 LADIES:** XS-2XL List Price **37.90** (Upcharge for 2XL & Tall sizes)

**LADIES TALL:** MT-2XLT

\*Available in Tall





COMPANION TO  
STYLE 4392

SIDE SEAM  
POCKETS

## 4390|4391

### MEDALIST JACKET

Heavyweight 100% polyester brushed tricot • Front zipper • Contrast color inserts on front  
• Raglan sleeves • Front seam pockets • Elastic cuffs and bottom band.

**4390 ADULT:** S-2XL List Price **31.40** (Upcharge for 2XL)

**4391 YOUTH:** S-L List Price **29.70**



## 7755|7756

### MEDALIST PANT

Heavyweight 100% polyester brushed tricot  
• Covered elastic waistband with inside drawcord  
• Side seam pockets • Contrast color side inserts  
• Zipper on outside lower leg.

**7755 ADULT:** S-2XL List Price **29.10**  
(Upcharge for 2XL)

**7756 YOUTH:** S-L List Price **26.50**

### DESIGN A CUSTOM FLYER



at [augustasportswear.com](http://augustasportswear.com)

START  
DESIGNING  
TODAY AT  
[augustasportswear.com](http://augustasportswear.com)



SIDE SEAM  
POCKETS

## 4392

### LADIES MEDALIST JACKET

Heavyweight 100% polyester brushed tricot • Ladies' fit • Front zipper • Raglan sleeves  
• Contrast color inserts on front • Front seam pockets • Elastic cuffs • Open bottom with  
elastic drawcord and cordlock.

**4392 LADIES:** S-2XL List Price **31.40** (Upcharge for 2XL)

For Youth sizes, see style 4391.



## 7752

### LADIES MEDALIST PANT

Heavyweight 100% polyester brushed tricot • Ladies' fit • Covered  
elastic waistband with inside drawcord • Side seam pockets  
• Contrast color side inserts • Zipper on outside lower leg.

**7752 LADIES:** S-2XL List Price **29.10** (Upcharge for 2XL)

For Youth sizes, see style 7756.



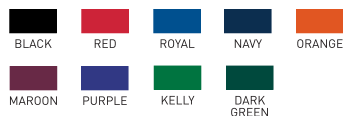
**1825**

#### SPIRIT BAG

600-denier polyester with PVC coating • Zippered main compartment has large U-shaped opening with two zipper pulls • Side pockets • Matching web handles with self-fabric handle wrapper, reinforced at stress points • Adjustable and detachable matching shoulder strap with black rubber shoulder guard • Plastic hardware • Self-fabric piping • Removable inside bottom board.

**1825:** 18"W x 10"H x 9"D

**Call for Pricing**



**1143**

#### TOURNAMENT BAG

70-denier nylon with PVC coating • Zippered main compartment with two zipper pulls • Black mesh side pockets • Large front pocket • Black web handles, reinforced at stress points • Adjustable and detachable matching shoulder strap with black rubber shoulder guard • Inside zippered pocket • Foam padding at bottom of bag to retain shape.

**1143:** 20"W x 12"H x 9"D

**Call for Pricing**



WRITABLE  
HANDLE  
WRAPPER

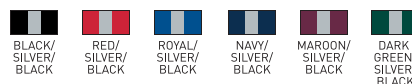
**1755**

#### GAME DUFFEL WITH SHOE POCKET

600-denier polyester with durable PVC backing with shiny inserts • Large main compartment • Front pocket opens for easy embellishment • Felt lined valuables pocket • Vented zippered double shoe compartment • Interior organization panel • Writable inside handle wrapper.

**1755:** 19½"W x 9½"H x 10"D

**Call for Pricing**



**167**

#### REVERB BACKPACK

210-denier nylon with PU coating • Fully reversible from drawstring bag to tote bag • Hemmed top with drawcord closure • Zippered front pocket allows for embellishment • Bottom corner grommets for reinforcement • Web handles.

**167:** 14"W x 18"H

**Call for Pricing**





- + Large Selection of **YOUTH** Styles
  - + Large Selection of **LADIES & GIRLS** Only Styles
  - + Wide Selection of **TEAM COLORS**
  - + Superior Order Accuracy
  - + Multiple Marketing Resources
- [augustasportswear.com](http://augustasportswear.com)

BASEBALL SOFTBALL BASKETBALL SOCCER LACROSSE FIELD HOCKEY FOOTBALL TENNIS TRACK & FIELD  
CROSS COUNTRY VOLLEYBALL CHEER SPIRITWEAR FANWEAR SIDELINE COACHES ATHLETICWEAR  
OUTERWEAR WARMUPS FLEECE HEADWEAR ACCESSORIES BAGS TOTES APRONS