

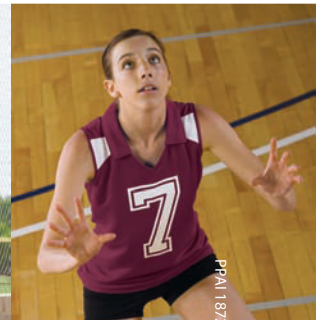
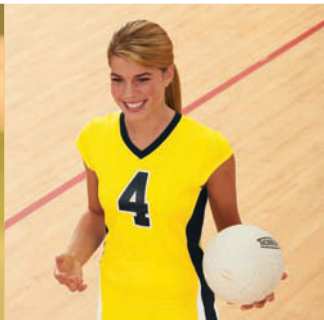
PPAI 187246 ASI 37461

PPAI 187246 ASI 37461

Ward
 PROMOTIONAL
 MARKETING SOLUTIONS, INC.
 wardpromotional.com
 209.549.2765
SPORTSWEAR®



2013
**basketball/
 volleyball**
 sideline &
 coaches



PPAI 187246 ASI 37461

www.WardPromotional.com

PPAI 187246 ASI 37461

preselected uniform builder
& custom flyer designer

marketing tools

Save TIME with your marketing tools. Quickly and easily create VIRTUAL SAMPLE flyers.

START TODAY!

www.augustasportswear.com/marketingtools

In a Few EASY Steps

- choose styles
- select color
- decorate
- personalize
- complete order form
- save, print or email



MOISTURE MANAGEMENT
fabric wicks moisture away keeping the body cool and dry



4-WAY STRETCH
stretch properties allow for increased mobility



ODOR RESISTANT



SEMI-FIT



FITTED



PRO CUT
longer rise and overall fuller fit



WATER RESISTANT
resists rain and water to keep the body protected and dry



COORDINATING PANTS
denotes that coordinating pants are available



LOOSE FIT

Dye Migration. Augusta Sportswear® cannot be held responsible for ink migration on polyester styles that can be attributed to poor ink quality or processing at temperatures exceeding those recommended by the ink manufacturer. **Dyeing.** Because of the variability of the dyeing process, we cannot guarantee perfect continuity of shade across all styles or from one order to the next. Jackets and pants are cut and offered for sale as separates, not as sets. **Decorating.** All embellishment is for photography and catalog purposes only. All styles are sold blank with no decorations applied. Augusta Sportswear® does not offer decorating services.

contents

- 6 BASKETBALL
- 22 LADIES BASKETBALL
- 26 LADIES VOLLEYBALL
- 34 SIDELINE/COACHES
- 47 WARMUPS
- 51 BAGS

Create Virtual Samples!

With your online **Preselected Uniform Builder** and **Custom Flyer Designer** tools, in just a few steps you can QUICKLY & EASILY create personalized flyers showcasing various styles to make the selection process even easier. SIMPLE. FAST. EFFECTIVE. Start saving time today!

preselected
uniform
builder

custom
flyer
designer



NEW

**new
products**

**outfit
your team.**

one of the largest offerings
of ladies specific & youth styles



1170|1175 - pg. 6



5047 - pg. 36



5048 - pg. 36



4750 - pg. 48



5001 - pg. 37



5002 - pg. 37



4752 - pg. 48



5041 - pg. 34



5042 - pg. 34



5043|5044 - pg. 35



5045|5046 - pg. 35



1425|1426 - pg. 21



1310|1311 - pg. 28



1470|1471 - pg. 45

NEW!

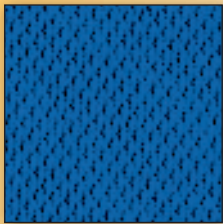
JERSEYS,
SHORTS
& MORE

quality styles.

large selection of high performance, innovative and basic fabric types to choose from

fabric guide

NEW

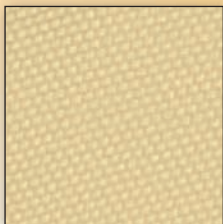


SNAG RESISTANT pgs 34 & 36

new fabric featuring wicking, snag resistant technology provides for increased durability

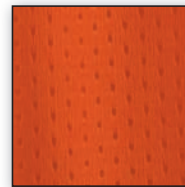


NEW



INTERLOCK pg 37

new wicking interlock dot-texture fabric



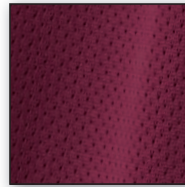
TRICOT MESH pg 18

100% polyester mesh with the largest hole design featuring two layers of tricot mesh or one layer of tricot inside lining



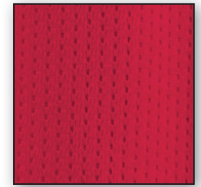
MINI MESH pg 19

100% polyester mesh with a small hole design featuring a mini mesh inside lining



MICRO MESH pg 19

100% polyester mesh with a small hole design featuring a mini mesh inside lining



WICKING MESH pg 20

100% wicking mesh textured fabric design featuring moisture management technology



PINHOLE MESH pg 26

ultra lightweight fabric provides extremely soft feel, 4-way stretch and full coverage breathability



CLOSED HOLE MESH pg 10

lightweight wicking textured fabric design



TEXTURED KNIT pg 37

unique textured fabric



SMOOTH KNIT pg 9

features a smooth and soft feel in a lightweight fabric

fully reversible

slam dunk uniform,
other reversible
styles pgs. 8, 11 & 15



FULLY REVERSIBLE



CONFORMS TO NFHS REGULATIONS

1170

1170|1171



SLAM DUNK JERSEY

Color side is 100% polyester wicking knit • White side is 100% polyester tricot mesh • Fully reversible • Self-fabric mitered V-neck collar • Contrast color piping in shoulder seam • Each layer has contrast color side inserts • Each layer hemmed separately for embellishment • Outside locker label • Conforms to NFHS regulations.

1170 ADULT: S-3XL List Price **25.00**
(Upcharge for 2XL-3XL)

1171 YOUTH: S-L List Price **23.00**



1175|1176



SLAM DUNK SHORT

Color side is 100% polyester wicking knit • White side is 100% polyester tricot mesh • Fully reversible • Full-cut • Covered elastic waistband with inside drawcord • Each layer has contrast color side inserts • Each layer hemmed separately for embellishment • 9-inch inseam • Youth inseam graded.

1175 ADULT: S-3XL List Price **25.00**
(Upcharge for 2XL-3XL)

1176 YOUTH: S-L List Price **23.00**



1175

9-INCH
(Youth
Inseam
Graded)
PRO CUT



CONFORMS
TO NFHS
REGULATIONS

1040

1045
9-INCH
(Youth
Inseam
Graded)
PRO CUT



create **virtual samples**

quickly & easily create personalized custom flyers in a few simple steps. See pages 2-3 for details or visit augustasportswear.com/marketingtools to start now!

1040|1041



TRIPLE-DOUBLE GAME JERSEY

100% polyester wicking knit with 100% polyester wicking Duo Knit inserts • Wicks moisture • Heat sealed label • Rib-knit collar • Contrast color side inserts • Conforms to NFHS regulations.

1040 ADULT: S-3XL List Price **19.90**
(Upcharge for 2XL-3XL)

1041 YOUTH: S-L List Price **17.90**



1045|1046



TRIPLE-DOUBLE GAME SHORT

100% polyester wicking knit with 100% polyester wicking Duo Knit inserts • Wicks moisture • Full-cut • Covered elastic waistband with inside drawcord • Contrast color side inserts • 9-inch inseam • Youth inseam graded.

1045 ADULT: S-3XL List Price **21.90**
(Upcharge for 2XL-3XL)

1046 YOUTH: S-L List Price **19.90**

CONFORMS TO NFHS REGULATIONS



FULLY REVERSIBLE UNIFORM

9-INCH (Youth Inseam Graded) PRO CUT

685|686



REVERSIBLE WICKING GAME JERSEY

Color side is 100% polyester wicking knit • White side is 100% polyester wicking tricot • Fully reversible • Self-fabric V-neck collar • Each layer has two contrast color V-shaped side panels • Each layer hemmed separately for embellishment • Outside locker label • Conforms to NFHS regulations.

685 ADULT: S-3XL List Price 32.40 (Upcharge for 2XL-3XL)
686 YOUTH: S-L List Price 31.00

Coordinating Ladies Reversible Jersey style 687 on page 22.



691|692



REVERSIBLE WICKING GAME SHORT

Color side is 100% polyester wicking knit • White side is 100% polyester wicking tricot • Fully reversible • Full-cut • Covered elastic waistband with inside drawcord • Each layer has two contrast color V-shaped side panels • 9-inch inseam • Youth inseam graded.

691 ADULT: S-3XL List Price 34.50 (Upcharge for 2XL-3XL)
692 YOUTH: S-L List Price 33.20

CONFORMS TO NFHS REGULATIONS



9-INCH (Youth Inseam Graded) PRO CUT

722|724



WICKING DUO KNIT GAME JERSEY

100% polyester wicking Duo Knit • Heat sealed label • Rib-knit collar with contrast color insert • Contrast color side panels with contrast insert • Conforms to NFHS regulations.

722 ADULT: S-3XL List Price 23.00 (Upcharge for 2XL-3XL)
724 YOUTH: M-L List Price 20.90



757|758



WICKING DUO KNIT GAME SHORT

100% polyester wicking Duo Knit • Full-cut • Covered elastic waistband with inside drawcord • Contrast color side inserts • 9-inch inseam • Youth inseam graded.

757 ADULT: S-3XL List Price 24.50 (Upcharge for 2XL-3XL)
758 YOUTH: M-L List Price 22.80

CONFORMS
TO NFHS
REGULATIONS

1060

BULLS
1

1065
9-INCH
(Youth
Inseam
Graded)
PRO CUT



create virtual samples

quickly & easily create personalized custom flyers in a few simple steps. See pages 2-3 for details or visit augustasportswear.com/marketingtools to start now!

benefits

- semi-fit jersey
- wicks moisture
- odor resistant
- soft, smooth feel

1060|1061



BASELINE JERSEY

100% polyester wicking smooth knit • Odor resistant • Heat sealed label • Self-fabric collar • Conforms to NFHS regulations.

1060 ADULT: S-3XL List Price **17.70**
(Upcharge for 2XL-3XL)

1061 YOUTH: S-L List Price **15.60**



1065|1066



BASELINE SHORT

100% polyester wicking smooth knit • Odor resistant • Full cut • Heat sealed label • Covered elastic waistband with inside drawcord • 9-inch inseam • Youth inseam graded.

1065 ADULT: S-3XL List Price **15.90**
(Upcharge for 2XL-3XL)

1066 YOUTH: S-L List Price **13.90**

basketball/stock uniforms

**CONFORMS
TO NFHS
REGULATIONS**



**7-INCH
(Youth
Inseam
Graded)
PRO CUT**

**CONFORMS
TO NFHS
REGULATIONS**



**9-INCH
(Youth
Inseam
Graded)
PRO CUT**

795|796



WICKING MESH GAME JERSEY

100% polyester wicking mesh • Heat sealed label • Tipped rib-knit modified V-neck collar and armholes • Contrast color side panels • Conforms to NFHS regulations.

795 ADULT: S-3XL List Price **23.10** (Upcharge for 2XL-3XL)
796 YOUTH: S-L List Price **19.60**



884|885



WICKING MESH/DAZZLE GAME JERSEY

100% polyester wicking closed hole mesh • 100% polyester dazzle fabric • Heat sealed label • Rib-knit V-neck collar and armholes • Contrast color shoulder inserts • Contrast color piping • Conforms to NFHS regulations.

884 ADULT: S-3XL List Price **23.60** (Upcharge for 2XL-3XL)
885 YOUTH: M-L List Price **21.60**



735|736



PRO CUT

WICKING MESH GAME SHORT

100% polyester wicking mesh • Full-cut • Covered elastic waistband with inside drawcord • Contrast color side panels • 7-inch inseam • Youth inseam graded.

735 ADULT: S-3XL List Price **17.90** (Upcharge for 2XL-3XL)
736 YOUTH: S-L List Price **16.00**

748|749



PRO CUT

WICKING MESH/DAZZLE GAME SHORT

100% polyester wicking mesh • 100% polyester dazzle fabric • Full-cut • Covered elastic waistband with inside drawcord • Contrast color dazzle side inserts with accent piping • 9-inch inseam • Youth inseam graded.

748 ADULT: S-3XL List Price **19.70** (Upcharge for 2XL-3XL)
749 YOUTH: M-L List Price **17.90**



9-INCH
(Youth
Inseam
Graded)
PRO CUT

FULLY REVERSIBLE
JERSEY



9-INCH
(Youth
Inseam
Graded)
PRO CUT



755|756

REVERSIBLE DAZZLE JERSEY

Two layers of 100% polyester dazzle fabric • Fully reversible
• Rib-knit V-neck collar • Each layer has contrast color
side panel with stripe • Each layer finished separately for
embellishment • Outside locker label.

755 ADULT: S-3XL List Price 26.40 (Upcharge for 2XL-3XL)
756 YOUTH: S-L List Price 23.60

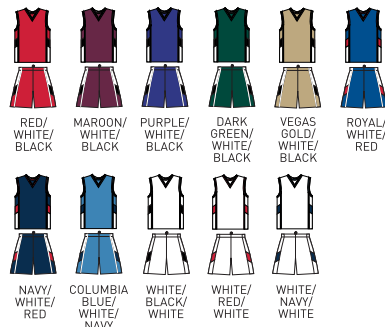


775|778

TRI-COLOR DAZZLE GAME JERSEY

100% polyester dazzle fabric • Tipped rib-knit V-neck collar and
armholes • Contrast tri-color side inserts with accent piping.

775 ADULT: S-3XL List Price 22.50 (Upcharge for 2XL-3XL)
778 YOUTH: S-L List Price 19.40



923|924

PRO
CUT

STRIPED DAZZLE SHORT

100% polyester dazzle fabric • Full-cut • Covered elastic
waistband with inside drawcord • Contrast color side inserts
and contrast accent stripes • 9-inch inseam • Youth
inseam graded.

923 ADULT: S-3XL List Price 16.70 (Upcharge for 2XL-3XL)
924 YOUTH: S-L List Price 15.20

715|716

PRO
CUT

TRI-COLOR DAZZLE GAME SHORT

100% polyester dazzle fabric • Full-cut • Covered elastic
waistband with inside drawcord • Contrast tri-color side inserts
with accent piping • 9-inch inseam • Youth inseam graded.

715 ADULT: S-3XL List Price 17.30 (Upcharge for 2XL-3XL)
716 YOUTH: S-L List Price 16.00



9-INCH
(Youth
Inseam
Graded)
PRO CUT



9-INCH
(Youth
Inseam
Graded)
PRO CUT

785|786

DAZZLE GAME JERSEY

100% polyester dazzle fabric • Tipped rib-knit V-neck collar with center patch for embellishment • Contrast color front and back shoulder inserts and accent piping.

785 ADULT: S-3XL List Price **21.00** (Upcharge for 2XL-3XL)
786 YOUTH: S-L List Price **18.60**

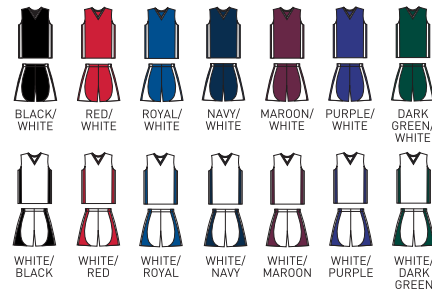


781|782

DAZZLE/MESH JERSEY

100% polyester dazzle fabric body and stripes with two layers of 100% polyester tricot mesh side inserts • Contrast color rib-knit V-neck collar • Contrast color mesh side inserts with accent dazzle stripes.

781 ADULT: S-3XL List Price **20.60** (Upcharge for 2XL-3XL)
782 YOUTH: M-L List Price **18.00**



745|747

PRO CUT

DAZZLE GAME SHORT

100% polyester dazzle fabric • Full-cut • Covered elastic waistband with inside drawcord • Contrast color front and back inserts with accent piping • 9-inch inseam • Youth inseam graded.

745 ADULT: S-3XL List Price **17.90** (Upcharge for 2XL-3XL)
747 YOUTH: S-L List Price **16.60**

717|719

PRO CUT

DAZZLE/MESH SHORT

100% polyester dazzle fabric body and stripes with two layers of 100% polyester tricot mesh side inserts • Full-cut • Covered elastic waistband with inside drawcord • Contrast color mesh side inserts with accent dazzle stripes • 9-inch inseam • Youth inseam graded.

717 ADULT: S-3XL List Price **19.60** (Upcharge for 2XL-3XL)
719 YOUTH: M-L List Price **18.00**

NEW



DROPPED TAIL

4750



SYNERGY PULLOVER

90% polyester/10% spandex knit • Wicks moisture • Heat sealed label • Half-zip pullover style • Raglan sleeves with contrast color inserts • Self-fabric cuffs • Dropped tail.

4750 ADULT: XS-3XL List Price **43.90** (Upcharge for 2XL-3XL)



PINHOLE MESH PERFORMANCE FABRIC



Pinhole mesh fabric provides unparalleled functionality with key high performance features and benefits.



benefits

- extremely soft feel
- full coverage breathability
- lightweight
- 4-way stretch flexibility

1080



EXA LONG SLEEVE CREW

92% polyester/8% spandex wicking pinhole mesh • Heat sealed label • Self-fabric collar and cuffs • Set-in sleeves with shoulder inserts.

1080 ADULT: S-3XL List Price **21.00** (Upcharge for 2XL-3XL)



create virtual samples

quickly & easily create personalized custom flyers in a few simple steps. See pages 2-3 for details or visit augustasportswear.com/marketingtools to start now!



1005|1006



APEX LONG SLEEVE CREW

100% polyester wicking smooth knit • Odor resistant • Heat sealed label • Self-fabric collar and cuffs • Set-in sleeves.

1005 ADULT: S-3XL List Price **19.90**
(Upcharge for 2XL-3XL)

1006 YOUTH: S-L List Price **17.30**



788|789



WICKING LONG SLEEVE T-SHIRT

100% polyester wicking knit • Heat sealed label • Self-fabric collar and cuffs • Set-in sleeves.

788 ADULT: S-3XL List Price **15.90**
(Upcharge for 2XL-3XL)

789 YOUTH: S-L List Price **13.90**



4600|4601



WICKING LONG SLEEVE WARMUP SHIRT

100% polyester wicking mesh • Heat sealed label • Tipped rib-knit lap-over collar • Contrast color accent piping on front shoulder • Contrast color sleeve and side inserts • Set-in sleeves • Self-fabric cuffs.

4600 ADULT: XS-3XL List Price **29.40**
(Upcharge for 2XL-3XL)

4601 YOUTH: S-L List Price **27.30**





197|198

TRICOT MESH REVERSIBLE TANK

Two layers of 100% polyester tricot mesh • Fully reversible • Bottom hem finished separately for embellishment • Outside locker label.

197 ADULT: S-3XL List Price **14.50** (Upcharge for 2XL-3XL)
198 YOUTH: S-L List Price **13.40**



195|196

TRICOT MESH/DAZZLE REVERSIBLE JERSEY

100% polyester tricot mesh outer layer • 100% polyester dazzle fabric inner layer • Fully reversible • Rib-knit V-neck collar • Each layer finished separately for embellishment • Outside locker label.

195 ADULT: S-3XL List Price **21.00** (Upcharge for 2XL-3XL)
196 YOUTH: S-L List Price **18.20**



136|137

REVERSIBLE MINI MESH LEAGUE TANK

Two layers of 100% polyester mini mesh • Fully reversible • Bottom hem finished separately for embellishment • Outside locker label.

136 ADULT: S-3XL List Price **16.00** (Upcharge for 2XL-3XL)
137 YOUTH: S-L List Price **13.80**



133|134

MINI MESH SINGLET

One layer of 100% polyester mini mesh.

133 ADULT: S-3XL List Price **9.50**
(Upcharge for 2XL-3XL)

134 YOUTH: S-L List Price **8.20**



180|181

POLY/COTTON ATHLETIC TANK

50% polyester/50% cotton jersey knit • Self-fabric binding at neck and armholes.

180 ADULT: S-3XL List Price **9.80**
(Upcharge for 2XL-3XL)

181 YOUTH: S-L List Price **7.10**



203|204

SHOOTER SHIRT

50% polyester/50% cotton jersey knit • Rib-knit collar.

203 ADULT: S-3XL List Price **9.00**
(Upcharge for 2XL-3XL)

204 YOUTH: S-L List Price **7.40**

*** Available in 3XL.**





wicking+ odor resistant

benefits

- wicks moisture
- odor resistant
- increased mobility
- softer feel

1010|1011



ELITE JERSEY

100% polyester wicking smooth knit • Odor resistant • Heat sealed label • Self-fabric collar • Set-in sleeves.

1010 ADULT: S-3XL List Price **14.90**
(Upcharge for 2XL-3XL)

1011 YOUTH: S-L List Price **13.10**



wicking shirts

benefit

- wicks moisture



790|791



WICKING T-SHIRT

100% polyester wicking knit • Heat sealed label • Self-fabric collar • Set-in sleeves.

790 ADULT: S-4XL List Price **11.40** (Upcharge for 2XL-4XL)

791 YOUTH: S-L List Price **11.00**

* Available in 4XL.



783



WICKING SHOOTER SHIRT

100% polyester wicking knit • Heat sealed label • Self-fabric collar.

783 ADULT: S-3XL List Price **11.10**

(Upcharge for 2XL-3XL)



11-INCH
PRO CUT



create **virtual samples**

quickly & easily create personalized custom flyers in a few simple steps. See pages 2-3 for details or visit augustasportswear.com/marketingtools to start now!

865

PRO CUT

EXTRA LONG TRICOT MESH SHORT

Two layers of 100% polyester tricot mesh
 • Full-cut • Covered elastic waistband with inside drawcord • 11-inch inseam.

865 ADULT: S-3XL List Price **18.60**
 (Upcharge for 2XL-3XL)



9-INCH
(Youth Inseam Graded)
PRO CUT



848|849

PRO CUT

LONG TRICOT MESH SHORT/TRICOT LINED

Outer layer of 100% polyester tricot mesh • Inner layer of 100% polyester tricot lining • Full-cut
 • Elastic waistband with inside drawcord
 • 9-inch inseam • Youth inseam graded.

848 ADULT: S-5XL List Price **13.00**
 (Upcharge for 2XL-5XL)

849 YOUTH: S-L List Price **11.90**



7-INCH
(Youth Inseam Graded)



842|843

TRICOT MESH SHORT/TRICOT LINED

Outer layer of 100% polyester tricot mesh • Inner layer of 100% polyester tricot lining • Elastic waistband with inside drawcord • 7-inch inseam
 • Youth inseam graded.

842 ADULT: S-5XL List Price **11.50**
 (Upcharge for 2XL-5XL)

843 YOUTH: S-L List Price **9.90**



9-INCH
(Youth
Inseam
Graded)



738|739

LONGER LENGTH MINI MESH LEAGUE SHORT

Two layers of 100% polyester mini mesh • Elastic waistband with inside drawcord • 9-inch inseam • Youth inseam graded.

738 ADULT: S-3XL List Price **13.50**
(Upcharge for 2XL-3XL)
739 YOUTH: S-L List Price **12.20**



7-INCH
(Youth
Inseam
Graded)



733|734

MINI MESH LEAGUE SHORT

Two layers of 100% polyester mini mesh • Elastic waistband with inside drawcord • 7-inch inseam • Youth inseam graded.

733 ADULT: S-3XL List Price **13.00**
(Upcharge for 2XL-3XL)
734 YOUTH: XS-L List Price **12.20**



9-INCH



754

LONGER LENGTH MICRO MESH SHORT

Outer layer of 100% nylon micro mesh • Inner layer of 100% nylon tricot lining or 100% polyester tricot lining • Covered elastic waistband with inside drawcord • 9-inch inseam.

754 ADULT: S-3XL List Price **16.60**
(Upcharge for 2XL-3XL)



7-INCH
(Youth
Inseam
Graded)



744|746

MICRO MESH SHORT

Outer layer of 100% nylon micro mesh • Inner layer of 100% nylon tricot lining or 100% polyester tricot lining • Covered elastic waistband with inside drawcord • 7-inch inseam • Youth inseam graded.

744 ADULT: S-3XL List Price **16.30**
(Upcharge for 2XL-3XL)
746 YOUTH: S-L List Price **14.50**



9-INCH
(Youth
Inseam
Graded)
PRO CUT



7-INCH
(Youth
Inseam
Graded)
PRO CUT



802|809



LONGER LENGTH WICKING MESH ATHLETIC SHORT

100% polyester wicking mesh • Full-cut • Covered elastic waistband with inside drawcord • 9-inch inseam • Youth inseam graded.

802 ADULT: S-4XL List Price **13.60**
(Upcharge for 2XL-4XL)

809 YOUTH: S-L List Price **11.70**



805|806



WICKING MESH ATHLETIC SHORT

100% polyester wicking mesh • Full-cut • Covered elastic waistband with inside drawcord • 7-inch inseam • Youth inseam graded.

805 ADULT: S-3XL List Price **11.90**
(Upcharge for 2XL-3XL)

806 YOUTH: S-L List Price **11.40**



9-INCH
(Youth
Inseam
Graded)



7-INCH
(Youth
Inseam
Graded)



926|927

LONG DAZZLE SHORT

100% polyester dazze fabric • Covered elastic waistband with inside drawcord • 9-inch inseam • Youth inseam graded.

926 ADULT: S-4XL List Price **13.70**
(Upcharge for 2XL-4XL)

927 YOUTH: S-L List Price **12.50**



920|921

DAZZLE SHORT

100% polyester dazze fabric • Covered elastic waistband with inside drawcord • 7-inch inseam • Youth inseam graded.

920 ADULT: S-3XL List Price **12.30**
(Upcharge for 2XL-3XL)

921 YOUTH: S-L List Price **11.50**

* Light Pink not available in 3XL.



multiple color options

polyester wicking shorts

NEW

7-INCH
(Youth Inseam Graded)
PRO CUT



1425|1426



OCTANE SHORT

100% polyester wicking knit • Wicks moisture • Full-cut • Heat sealed label • Covered elastic waistband with inside drawcord • 7-inch inseam • Youth inseam graded.

1425 ADULT: S-3XL List Price **9.90** (Upcharge for 2XL-3XL)

1426 YOUTH: XS-L List Price **7.90**



9-INCH
(Youth Inseam Graded)
PRO CUT



1420|1421



TRAINING SHORT

100% polyester wicking knit • Wicks moisture • Full-cut • Heat sealed label • Covered elastic waistband with inside drawcord • 9-inch inseam • Youth inseam graded.

1420 ADULT: S-3XL List Price **10.50** (Upcharge for 2XL-3XL)

1421 YOUTH: S-L List Price **8.80**



create virtual samples

quickly & easily create personalized custom flyers in a few simple steps. See pages 2-3 for details or visit augustasportswear.com/marketingtools to start now!

**CONFORMS
TO NFHS
REGULATIONS**



**FULLY REVERSIBLE
UNIFORM**

**9-INCH
(Youth
Inseam
Graded)
PRO CUT**

687



LADIES REVERSIBLE WICKING GAME JERSEY

Color side is 100% polyester wicking knit • White side is 100% polyester wicking tricot • Ladies' fit • Fully reversible • Self-fabric V-neck collar • Each layer has two contrast color V-shaped side panels • Each layer hemmed separately for embellishment • Outside locker label • Conforms to NFHS regulations.

687 LADIES: S-2XL List Price **32.40** (Upcharge for 2XL)
Coordinating Adult and Youth styles 685|686 on page 8.



691|692



REVERSIBLE WICKING GAME SHORT

Color side is 100% polyester wicking knit • White side is 100% polyester wicking tricot • Fully reversible • Full-cut • Covered elastic waistband with inside drawcord • Each layer has two contrast color V-shaped side panels • 9-inch inseam • Youth inseam graded.

691 ADULT: S-3XL List Price **34.50**
(Upcharge for 2XL-3XL)
692 YOUTH: S-L List Price **33.20**



7-INCH

854|855



LADIES WICKING MESH ENDURANCE JERSEY

100% polyester wicking mesh • Ladies' fit • Heat sealed label • Contrast color self-fabric neck • Contrast color shoulder and side inserts.

854 LADIES: S-2XL List Price **22.90** (Upcharge for 2XL)
855 GIRLS: S-L List Price **20.80**



732



LADIES WICKING MESH GAME SHORT

100% polyester wicking mesh • Ladies' fit • Covered elastic waistband with inside drawcord • Contrast color side panels • 7-inch inseam.

732 LADIES: S-2XL List Price **16.40**
(Upcharge for 2XL)

For Youth sizes, see style 736 on page 10.



7-INCH

527|528



LADIES WICKING MESH POWERHOUSE JERSEY

100% polyester wicking mesh • Ladies' fit • Heat sealed label
• Two-color self-fabric V-neck collar • Contrast color side panels.

527 LADIES: S-2XL List Price **17.90** (Upcharge for 2XL)
528 GIRLS: S-L List Price **15.90**



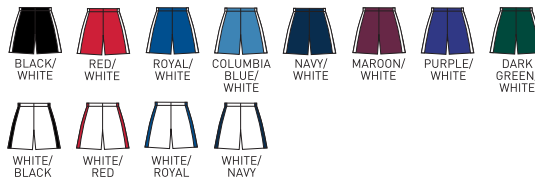
732



LADIES WICKING MESH GAME SHORT

100% polyester wicking mesh • Ladies' fit • Covered elastic waistband with inside drawcord • Contrast color side panels
• 7-inch inseam.

732 LADIES: S-2XL List Price **16.40** (Upcharge for 2XL)
For Youth sizes, see style 736 on page 10.



7-INCH
(Youth
Inseam
Graded)

577|578

LADIES DAZZLE ALL STAR JERSEY

100% polyester dazzle fabric • Ladies' fit • Contrast color rib-knit modified V-neck collar • White shoulder inserts.

577 LADIES: S-2XL List Price **13.90** (Upcharge for 2XL)
578 GIRLS: S-L List Price **12.30**



920|921

DAZZLE SHORT

100% polyester dazzle fabric • Covered elastic waistband with inside drawcord • 7-inch inseam • Youth inseam graded.

920 ADULT: S-3XL List Price **12.30** (Upcharge for 2XL-3XL)
921 YOUTH: S-L List Price **11.50**

* Light Pink not available in 3XL.



951|952



LADIES WICKING DUO KNIT ATTACK JERSEY

100% polyester wicking Duo Knit • Ladies' fit • Heat sealed label • Two-color modified self-fabric V-neck collar • Two-color side panels with triangular contrast insert • Conforms to NFHS regulations.

951 LADIES: S-2XL List Price **21.90** (Upcharge for 2XL)
952 GIRLS: S-L List Price **19.90**



CONFORMS TO NFHS REGULATIONS



WICKING DUO KNIT



7-INCH
(Girls Inseam Graded)

972|975



LADIES WICKING DUO KNIT ATTACK SHORT

100% polyester wicking Duo Knit • Ladies' fit • Covered elastic waistband with inside drawcord • Two-color side panels with triangular contrast insert • 7-inch inseam • Girls inseam graded.

972 LADIES: S-2XL List Price **19.20** (Upcharge for 2XL)
975 GIRLS: S-L List Price **18.40**



RACERBACK

CONFORMS TO NFHS REGULATIONS



972

7-INCH
(Girls Inseam Graded)

928|929



LADIES WICKING DUO KNIT CRUSH JERSEY

100% polyester wicking Duo Knit • Ladies' fit • Heat sealed label • Contrast color self-fabric V-neck collar • Two-color side panels with triangular accent panel • Racerback styling • Conforms to NFHS regulations.

928 LADIES: S-2XL List Price **19.90** (Upcharge for 2XL)
929 GIRLS: S-L List Price **17.90**





146

LADIES TRICOT MESH REVERSIBLE TANK

Two layers of 100% polyester tricot mesh • Ladies' fit
 • Fully reversible • Bottom hem finished separately for embellishment • Outside locker label.

146 LADIES: S-2XL List Price **15.90**
 (Upcharge for 2XL)

For Youth sizes, see style 198 on page 15.



138|135

LADIES REVERSIBLE MINI MESH LEAGUE TANK

Two layers of 100% polyester mini mesh • Ladies' fit
 • Fully reversible • Bottom hem finished separately for embellishment • Outside locker label.

138 LADIES: S-2XL List Price **16.00**
 (Upcharge for 2XL)

135 GIRLS: S-L List Price **14.00**



create **virtual samples**

quickly & easily create personalized custom flyers in a few simple steps. See pages 2-3 for details or visit augustasportswear.com/marketingtools to start now!

court series

pg. 26-30

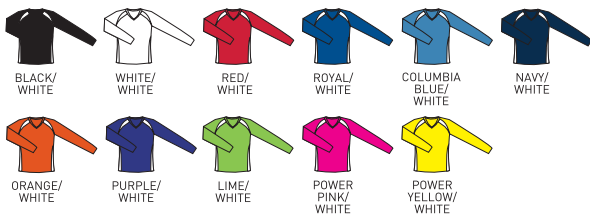
1305



LADIES SPIKE JERSEY

92% polyester/8% spandex wicking pinhole mesh • Wicks moisture • Ladies' fit • Heat sealed label • Self-fabric V-neck collar • Contrast color raglan sleeves and side inserts • 27-inch graded body length.

1305 LADIES: XS-2XL List Price **24.50**
(Upcharge for 2XL)



PINHOLE MESH PERFORMANCE FABRIC

Pinhole mesh fabric provides unparalleled functionality with key high performance features and benefits.



benefits

- extremely soft feel
- full coverage breathability
- lightweight
- 4-way stretch flexibility

742|743



LADIES POLY/SPANDEX 4" SHORT

90% polyester/10% spandex knit • Odor resistant • Wicks moisture • Ladies' fit • Heat sealed label • Flatlock seamed construction for extra comfort • Low rise • Covered elastic waistband • No side seams • Two-ply gusset • 4-inch inseam • Girls inseam graded.

742 LADIES: S-2XL List Price **15.80** (Upcharge for 2XL)
743 GIRLS: S-L List Price **13.70**



see our volleyball collection at augustasportswear.com/courtservices

1305



742

4-INCH
(Girls
Inseam
Graded)

court series

pg. 26-30



1206



LADIES POLY/SPANDEX POWER JERSEY

90% polyester/10% spandex knit • Odor resistant
 • Wicks moisture • Ladies' fit • Heat sealed label
 • Self-fabric V-neck collar • White flatlock stitching on shoulder, sleeves and side seams • Set-in sleeves.

1206 LADIES: XS-2XL List Price **31.50**
 (Upcharge for 2XL)



4650



LADIES WICKING MESH CHARGER JERSEY

100% polyester wicking mesh • Ladies' fit • Heat sealed label
 • Self-fabric V-neck collar with contrast color three-needle coverstitching • Contrast color front and back sleeve inserts with contrast three-needle coverstitching.

4650 LADIES: XS-2XL List Price **24.20** (Upcharge for 2XL)



THREE-NEEDLE COVERSTITCHING

court series

pg. 26-30

NEW

1310



1210

2½-INCH

1310|1311



LADIES HIT JERSEY

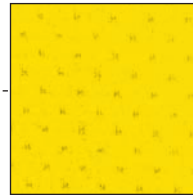
92% polyester/8 % spandex wicking pinhole mesh • Wicks moisture • Ladies' fit • Heat sealed label • Contrasting self-fabric V-neck collar • Set-in sleeves • Contrasting side panel with white triangular insert at hem • 27-inch graded body length.

1310 LADIES: S-2XL List Price **17.00** (Upcharge for 2XL)

1311 GIRLS: S-L List Price **15.00**



PINHOLE MESH PERFORMANCE FABRIC



Pinhole mesh fabric provides unparalleled functionality with key high performance features and benefits.

1210|1211



LADIES POLY/SPANDEX 2.5" SHORT

90% polyester/10% spandex knit • Odor resistant • Wicks moisture • Ladies' fit • Heat sealed label • Low rise • Covered elastic waistband • No side seams • 2½-inch inseam.

1210 LADIES: S-2XL List Price **15.00** (Upcharge for 2XL)

1211 GIRLS: XS-L List Price **14.00**





1300

1210

2½-INCH



1220

MESH INSERT
NECK AND
SIDES

742
4-INCH
(Girls
Inseam
Graded)

court series

pg. 26-30

1300|1301



LADIES MVP JERSEY

92% polyester/8% spandex wicking pinhole mesh • Wicks moisture • Ladies' fit • Heat sealed label • Self-fabric V-neck collar • Raglan sleeves with contrast color inserts • 27-inch graded body length.

1300 LADIES: S-2XL List Price **16.40** (Upcharge for 2XL)

1301 GIRLS: S-L List Price **14.50**



PINHOLE MESH PERFORMANCE FABRIC



Pinhole mesh fabric provides unparalleled functionality with key high performance features and benefits.

1220|1221



LADIES CHALLENGE JERSEY

90% polyester/10% spandex knit • 93% polyester/7% spandex neck and mesh inserts • Odor resistant • Wicks moisture • Ladies' fit • Heat sealed label • White poly/spandex mesh V-neck collar • White poly/spandex mesh side inserts for breathability.

1220 LADIES: S-2XL List Price **21.90** (Upcharge for 2XL)

1221 GIRLS: S-L List Price **19.90**



742|743



LADIES POLY/SPANDEX 4" SHORT

90% polyester/10% spandex knit • Odor resistant • Wicks moisture • Ladies' fit • Heat sealed label • Flatlock seamed construction for extra comfort • Low rise • Covered elastic waistband • No side seams • Two-ply gusset • 4-inch inseam • Girls inseam graded.

742 LADIES: S-2XL List Price **15.80** (Upcharge for 2XL)

743 GIRLS: S-L List Price **13.70**





court series

pg. 26-30

1204|1205



LADIES RALLY JERSEY

100% polyester wicking smooth knit • Odor resistant
• Ladies' fit • Heat sealed label • Self-fabric V-neck collar with accent piping at bottom • Set-in cap sleeves.

1204 LADIES: S-2XL List Price **15.90** (Upcharge for 2XL)

1205 GIRLS: S-L List Price **13.90**



create virtual samples

quickly & easily create personalized custom flyers in a few simple steps. See pages 2-3 for details or visit augustasportswear.com/marketingtools to start now!

1230|1231



LADIES MATCH JERSEY

100% polyester wicking closed hole mesh • Ladies' fit
• Heat sealed label • Self-fabric V-neck and collar
• Contrast color shoulder inserts • Self-fabric armholes.

1230 LADIES: S-2XL List Price **15.50** (Upcharge for 2XL)

1231 GIRLS: S-L List Price **13.50**



1230

1210
2 1/2-INCH



WIDE RACERBACK

705|706



LADIES POLY/SPANDEX SLEEVELESS TOP

90% polyester/10% spandex knit • Odor resistant • Wicks moisture • Ladies' fit • Heat sealed label • Self-fabric binding at neck and armholes • Contrast color side panels.

705 LADIES: S-2XL List Price 19.30 (Upcharge for 2XL)

706 GIRLS: S-L List Price 17.10



1202|1203



LADIES POLY/SPANDEX SOLID RACERBACK TANK

90% polyester/10% spandex knit • Odor resistant • Wicks moisture • Ladies' fit • Heat sealed label • Self-fabric binding at neck and armholes • Wide racerback styling for easier decoration.

1202 LADIES: S-2XL List Price 19.00 (Upcharge for 2XL)

1203 GIRLS: S-L List Price 16.40



PINHOLE MESH PERFORMANCE FABRIC



Pinhole mesh fabric provides unparalleled functionality with key high performance features and benefits.



RACERBACK



1290|1291



LADIES INFERNO JERSEY

92% polyester/8% spandex pinhole mesh • Wicks moisture • Ladies' fit • Heat sealed label • Self-fabric V-neck collar • Contrast color triangular side panels with white piping • Racerback styling.

1290 LADIES: S-2XL List Price 16.40 (Upcharge for 2XL)

1291 GIRLS: S-L List Price 15.10



1235|1236



LADIES TRIUMPH JERSEY

100% polyester wicking smooth knit • 100% polyester wicking Duo Knit inserts • Odor resistant • Ladies' fit • Heat sealed label • Contrast color Duo Knit V-neck collar • Contrast color front and back Duo Knit inserts.

1235 LADIES: S-2XL List Price 17.50 (Upcharge for 2XL)

1236 GIRLS: S-L List Price 15.90





854|855



LADIES WICKING MESH ENDURANCE JERSEY

100% polyester wicking mesh • Ladies' fit • Heat sealed label
 • Contrast color self-fabric neck • Contrast color shoulder and side inserts.

854 LADIES: S-2XL List Price **22.90** (Upcharge for 2XL)
855 GIRLS: S-L List Price **20.80**



515|516



LADIES WICKING MESH EXTREME JERSEY

100% polyester wicking mesh • 100% polyester dazzle fabric side panels • Ladies' fit • Heat sealed label • Two-color self-fabric V-neck collar • Contrast color side panels with accent piping • White dazzle side panels.

515 LADIES: S-2XL List Price **18.10** (Upcharge for 2XL)
516 GIRLS: S-L List Price **16.90**



RACERBACK



513|514



LADIES WICKING MESH ADVANTAGE JERSEY

100% polyester wicking mesh • 100% polyester dazzle fabric side panels • Ladies' fit • Heat sealed label • Contrast color self-fabric V-neck collar • Contrast color side panels with accent piping • White dazzle side panels • Racerback styling • Rib-knit armholes.

513 LADIES: S-2XL List Price **18.10** (Upcharge for 2XL)
514 GIRLS: S-L List Price **16.70**



527|528



LADIES WICKING MESH POWERHOUSE JERSEY

100% polyester wicking mesh • Ladies' fit • Heat sealed label • Two-color self-fabric V-neck collar • Contrast color side panels.

527 LADIES: S-2XL List Price **17.90** (Upcharge for 2XL)
528 GIRLS: S-L List Price **15.90**





1015|1016



LADIES ELITE JERSEY

100% polyester wicking smooth knit • Odor resistant
 • Ladies' fit • Heat sealed label • Self-fabric V-neck collar
 • Topstitched shoulder seams • Set-in sleeves.

1015 LADIES: S-2XL List Price **14.90** (Upcharge for 2XL)

1016 GIRLS: S-L List Price **13.10**



505|506



LADIES WICKING MESH TEAM JERSEY

100% polyester wicking mesh • Ladies' fit • Heat sealed label
 • White self-fabric binding at neck and armholes.

505 LADIES: S-2XL List Price **13.90** (Upcharge for 2XL)

506 GIRLS: S-L List Price **12.50**



benefits

- built-in brief
- inside key pocket
- low rise



MESH INSERT

960|961



LADIES WICKING MESH SHORT

100% polyester wicking mesh • Ladies' fit • Covered elastic waistband with inside drawcord • 5-inch inseam • Girls inseam graded.

960 LADIES: S-2XL List Price **12.60** (Upcharge for 2XL)

961 GIRLS: S-L List Price **11.90**



1265|1266



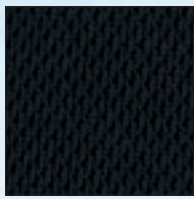
LADIES JUNIOR FIT PULSE TEAM SHORT

Shell is 100% polyester micropoly • Inserts are 100% polyester mesh
 • Lining is 100% polyester wicking crepe • Liner wicks moisture • Junior fit
 • Low rise • Covered elastic waistband with inside drawcord • Inner brief with leg elastic
 • Inside key pocket • Mesh insert side panel • 4-inch inseam • Contrast self-fabric binding on side panels and hem
 • Girls inseam graded.

1265 LADIES JUNIOR FIT: S-2XL List Price **17.80** (Upcharge for 2XL)

1266 GIRLS: S-L List Price **16.70**





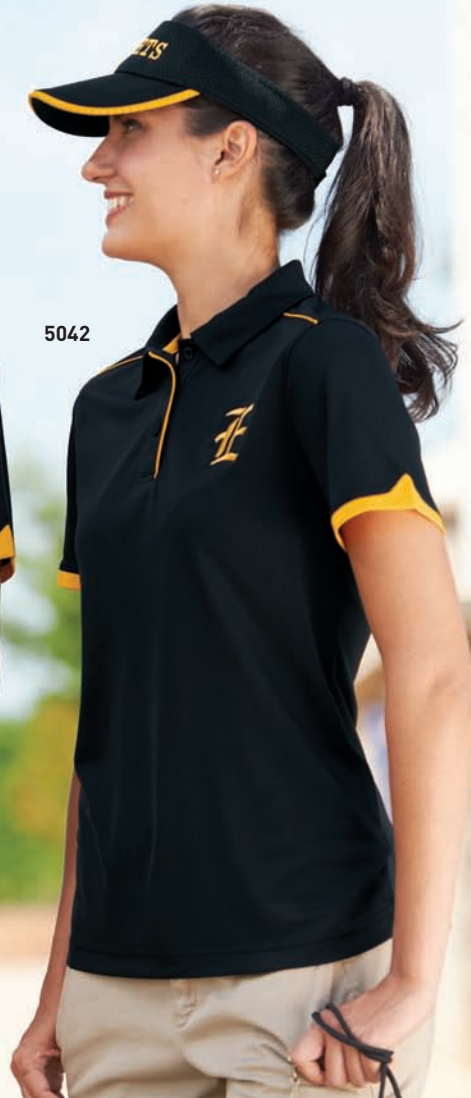
SNAG RESISTANT



5041



5042



motion collection

NEW SNAG RESISTANT wicking fabric for increased durability

5041



MOTION SPORT SHIRT

100% polyester wicking snag resistant knit • 100% polyester pinhole micromesh cuff • Wicks moisture • Heat sealed label • Self-fabric collar • Breathable contrast color pinhole mesh neck tape, piping on shoulder, and sleeve cuff • Topstitched armholes • Set-in sleeves • Box-stitched placket • Three matching buttons with cross-stitching.

5041 ADULT: S-4XL List Price **33.90** (Upcharge for 2XL-4XL)



5042



LADIES MOTION SPORT SHIRT

100% polyester wicking snag resistant knit • 100% polyester pinhole micromesh cuff • Wicks moisture • Ladies' fit • Heat sealed label • Self-fabric collar • Breathable contrast color pinhole mesh neck tape, piping on shoulder, and sleeve cuff • Topstitched armholes • Set-in sleeves • Box-stitched placket • Three matching buttons with cross-stitching.

5042 LADIES: S-2XL List Price **33.90** (Upcharge for 2XL)

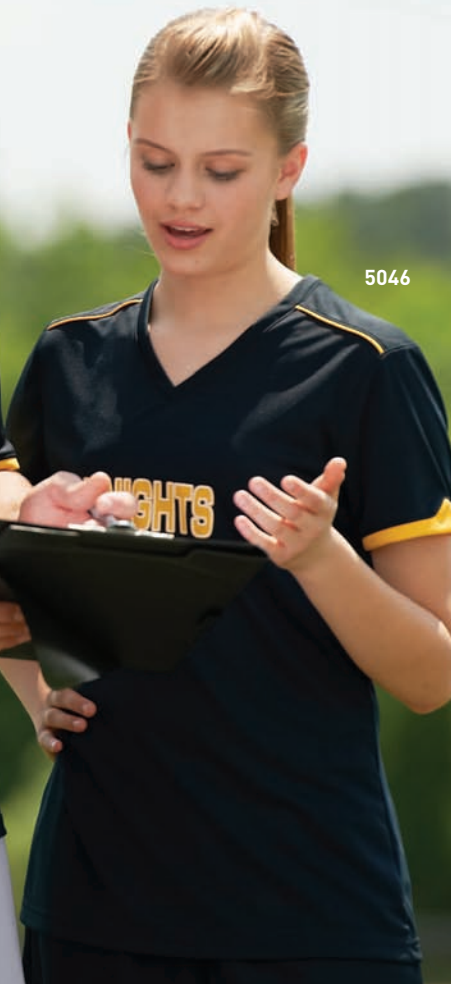


NEW

5043



5046



motion collection

5043|5044



MOTION CREW

100% polyester wicking smooth knit • Odor resistant • Wicks moisture • Heat sealed label • Self-fabric collar • Topstitched shoulder seams • Set-in sleeves • Contrast color piping on shoulder • Contrast color insert at sleeve hem.

5043 ADULT: S-3XL List Price **19.90** (Upcharge for 2XL-3XL)
5044 YOUTH: S-L List Price **17.90**



5045|5046

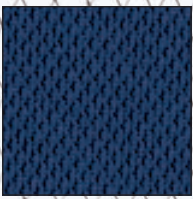


LADIES MOTION JERSEY

100% polyester wicking smooth knit • Odor resistant • Wicks moisture • Ladies' fit • Heat sealed label • Self-fabric V-neck collar • Topstitched shoulder seams • Set-in sleeves • Contrast color piping on shoulder • Contrast color insert at sleeve hem.

5045 LADIES: S-2XL List Price **18.40** (Upcharge for 2XL)
5046 GIRLS: S-L List Price **16.50**





SNAG RESISTANT



5047

5048

NEW SNAG RESISTANT wicking fabric for increased durability

5047



GENESIS SPORT SHIRT

- 100% polyester wicking snag resistant knit • Wicks moisture
- Heat sealed label • Self-fabric collar with contrasting color neck tape • Two-color shoulder inserts • Topstitched armholes
- Set-in sleeves • Box-stitched placket • Three matching buttons with cross-stitching.

5047 ADULT: S-4XL List Price **33.90** (Upcharge for 2XL-4XL)



5048



LADIES GENESIS SPORT SHIRT

- 100% polyester wicking snag resistant knit • Wicks moisture
- Ladies' fit • Heat sealed label • Self-fabric collar with contrasting color neck tape • Two-color shoulder inserts
- Topstitched armholes • Set-in sleeves • Box-stitched placket
- Three matching buttons with cross-stitching.

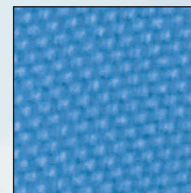
5048 LADIES: S-2XL List Price **33.90** (Upcharge for 2XL)



NEW



5001



**INTERLOCK
DOT-TEXTURED
FABRIC**



5002

NEW wicking interlock dot-textured fabric design

5001



VISION SPORT SHIRT

100% polyester wicking textured knit • Wicks moisture
• Heat sealed label • Self-fabric collar • Topstitched armholes and forward shoulder seams • Set-in sleeves • Box-stitched placket • Three matching buttons with cross-stitching.

5001 ADULT: S-4XL List Price **21.90** (Upcharge for 2XL-4XL)



5002



LADIES VISION SPORT SHIRT

100% polyester wicking textured knit • Wicks moisture • Ladies' fit
• Heat sealed label • Self-fabric collar • Topstitched armholes and forward shoulder seams • Set-in sleeves • Box-stitched placket • Three matching buttons with cross-stitching.

5002 LADIES: S-2XL List Price **21.90** (Upcharge for 2XL)





5013

5012

PINHOLE MESH INSERT

see our premier collection
augustasportswear.com/premier

3700/
 3705
 See details
 on pg. 47

3710/
 3715
 See details
 on pg. 47

premier collection

benefits

- large selection of colors
- coordinating warmups & jerseys

5012|5013



PREMIER SPORT SHIRT

100% polyester wicking closed hole mesh • 100% polyester pinhole micromesh inserts • Wicks moisture • Ladies' fit on style 5013 • Heat sealed label • Self-fabric collar • Breathable contrast color pinhole mesh neck tape, top placket facing (color bodies) shoulder and front inserts • Set-in sleeves • Box-stitched placket • Three matching buttons.

5012 ADULT: S-4XL List Price **31.90** (Upcharge for 2XL-4XL)

5013 LADIES: S-2XL List Price **31.90** (Upcharge for 2XL)



create virtual samples

quickly & easily create personalized custom flyers in a few simple steps. See pages 2-3 for details or visit augustasportswear.com/marketingtools to start now!

1056

1050



PINHOLE MESH INSERT

see our premier collection
augustasportswear.com/premier

premier collection

1050|1051



PREMIER CREW

100% polyester wicking smooth knit • 92% polyester/8% spandex pinhole mesh inserts • Odor resistant • Heat sealed label • Self-fabric collar • Set-in sleeves • Breathable contrast color pinhole mesh shoulder and front inserts.

1050 ADULT: S-3XL List Price **19.90** (Upcharge for 2XL-3XL)
1051 YOUTH: S-L List Price **17.90**



1055|1056



LADIES PREMIER JERSEY

100% polyester wicking smooth knit • 92% polyester/8% spandex pinhole mesh inserts • Odor resistant • Ladies' fit • Heat sealed label • Self-fabric V-neck collar • Topstitched shoulder seams • Set-in sleeves • Breathable contrast color pinhole mesh shoulder and front inserts.

1055 LADIES: S-2XL List Price **18.40** (Upcharge for 2XL)
1056 GIRLS: S-L List Price **16.50**



gameday collection



5055



WICKING TEXTURED GAMEDAY SPORT SHIRT

100% polyester wicking closed hole mesh • 94% polyester/6% spandex wicking smooth knit inserts • Heat sealed label • Self-fabric collar • Contrast color shoulder and side inserts • Smooth inserts stretch for enhanced performance • Set-in sleeves • Three matching buttons.

5055 ADULT: S-4XL List Price **33.50** (Upcharge for 2XL-4XL)



5059



LADIES SLEEVELESS WICKING TEXTURED GAMEDAY SPORT SHIRT

100% polyester wicking closed hole mesh • 94% polyester/6% spandex wicking smooth knit inserts • Ladies' fit • Heat sealed label • Self-fabric V-neck collar • Contrast color shoulder and side inserts • Smooth inserts stretch for enhanced performance • Self-fabric armholes • Side vents.

5059 LADIES: XS-2XL List Price **31.90** (Upcharge for 2XL)



1020|1021



GAMEDAY CREW

100% polyester wicking smooth knit • Odor resistant • Heat sealed label • Self-fabric collar • Contrast color shoulder and side inserts • Set-in sleeves.

1020 ADULT: S-4XL List Price **25.00** (Upcharge for 2XL-4XL)

1021 YOUTH: S-L List Price **21.00**





5090



WICKING TEXTURED RAGLAN SLEEVE SPORT SHIRT

100% polyester wicking closed hole mesh • Heat sealed label
 • Self-fabric collar • Contrast color sleeve and side inserts
 • Raglan sleeves • Three matching buttons.

5090 ADULT: S-3XL List Price **31.90** (Upcharge for 2XL-3XL)



5075



BACK

5076

LADIES FIT



create virtual samples

quickly & easily create personalized custom flyers in a few simple steps. See pages 2-3 for details or visit augustasportswear.com/marketingtools to start now!

5075|5076



WICKING TEXTURED SIDELINE SPORT SHIRT

100% polyester wicking closed hole mesh • Ladies' fit on style 5076 • Heat sealed label • Self-fabric collar • Contrast color front and back shoulder inserts • Set-in sleeves • Three matching buttons on Adult style 5075 • Four matching buttons on Ladies' style 5076.

5075 ADULT: S-4XL List Price **31.90** (Upcharge for 2XL-4XL)

5076 LADIES: S-2XL List Price **31.90** (Upcharge for 2XL)





all-conference collection

see our all-conference collection
augustasportswear.com/allconference



create virtual samples

quickly & easily create personalized custom flyers in a few simple steps. See pages 2-3 for details or visit augustasportswear.com/marketingtools to start now!

5015|5016



ALL-CONFERENCE SPORT SHIRT

100% polyester wicking closed hole mesh • Wicks moisture • Ladies' fit on style 5016 • Heat sealed label • Self-fabric collar • Contrast color front and back inserts • Set-in sleeves • Three matching buttons.

5015 ADULT: S-4XL List Price **31.90** (Upcharge for 2XL-4XL)

5016 LADIES: S-2XL List Price **31.90** (Upcharge for 2XL)



1030|1031



ALL-CONFERENCE CREW

100% polyester wicking knit • Wicks moisture • Heat sealed label • Self-fabric collar • Contrast color inserts • Double-needle coverstitched collar and armholes • Set-in sleeves.

1030 ADULT: S-3XL List Price **19.00** (Upcharge for 2XL-3XL)

1031 YOUTH: S-L List Price **17.00**



5086|5087



WICKING TEXTURED COLOR BLOCK SPORT SHIRT

100% polyester wicking closed hole mesh • Ladies' fit on style 5087 • Heat sealed label • Self-fabric collar • Contrast color shoulder inserts with smooth texture • Raglan sleeves • Three matching buttons on Adult style 5086 • Buttonless placket on Ladies' style 5087.

5086 ADULT: S-5XL List Price **31.90** (Upcharge for 2XL-5XL)



5087 LADIES: S-3XL List Price **31.90** (Upcharge for 2XL-3XL)



5086



5087

LADIES FIT



create virtual samples

quickly & easily create personalized custom flyers in a few simple steps. See pages 2-3 for details or visit augustasportswear.com/marketingtools to start now!



5095



5097

LADIES FIT

5095|5097



WICKING MESH SPORT SHIRT

100% polyester wicking closed hole mesh • Ladies' fit on style 5097 • Heat sealed label • Matching rib-knit collar • Set-in sleeves • Three matching buttons.

5095 ADULT: S-3XL List Price **25.90** (Upcharge for 2XL-3XL)

5097 LADIES: S-3XL List Price **25.90** (Upcharge for 2XL-3XL)



poly/spandex sport shirts

5025



PLAYOFF SPORT SHIRT

94% polyester/6% spandex knit with wicking smooth knit finish • 100% polyester pinhole micromesh inserts • Odor resistant • Wicks moisture • Heat sealed label • Self-fabric collar • Breathable contrast color pinhole micromesh front and back shoulder inserts • Set-in sleeves • Three matching buttons.

5025 ADULT: S-4XL List Price **35.90** (Upcharge for 2XL-4XL)



see our poly/spandex collection
[augustasportswear.com/
 coachespolyspandex](http://augustasportswear.com/coachespolyspandex)

5035|5037



POLY/SPANDEX CHAMPIONSHIP SPORT SHIRT

94% polyester/6% spandex knit with wicking smooth knit finish • Odor resistant • Wicks moisture • Ladies' fit on style 5037 • Heat sealed label • Self-fabric collar • Contrast triangular inserts on top of the sleeve • Contrast piping on side seam • Set-in sleeves • Three matching buttons.

5035 ADULT: S-4XL List Price **35.90** (Upcharge for 2XL-4XL)

5037 LADIES: XS-2XL List Price **35.90** (Upcharge for 2XL)



5035



5037

LADIES FIT

multi-purpose

moisture management shorts with pockets

pgs. 45-47



SIDE SEAM POCKETS

1470
11-INCH
(Youth Inseam Graded)

NEW



create **virtual samples**

quickly & easily create personalized custom flyers in a few simple steps. See pages 2-3 for details or visit augustasportswear.com/marketingtools to start now!

1470|1471

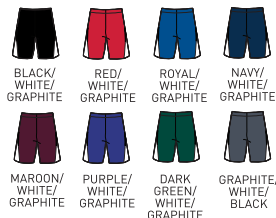


CYCLONE SHORT

- 100% polyester wicking smooth knit • 100% polyester wicking knit inserts • 100% polyester wicking mesh inserts
- Odor resistant • Wicks moisture • Heat sealed label
- Covered elastic waistband with inside drawcord
- Side seam pockets • Contrast color side inserts
- 11-inch inseam • Youth inseam graded.

1470 ADULT: S-3XL List Price **21.90**
(Upcharge for 2XL-3XL)

1471 YOUTH: S-L List Price **19.90**



sideline/coaches



MESH INSERT

1400
9-INCH
PRO CUT

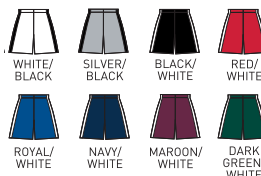
1400



STAFF SHORT

100% polyester wicking smooth knit • 100% polyester wicking mesh inserts • Odor resistant • Wicks moisture • Full-cut • Heat sealed label • Covered elastic waistband with inside drawcord • Side seam pockets • Contrast color side inserts • 9-inch inseam.

1400 ADULT: S-4XL List Price **21.00**
(Upcharge for 2XL-4XL)



create **virtual samples**

quickly & easily create personalized custom flyers in a few simple steps. See pages 2-3 for details or visit augustasportswear.com/marketingtools to start now!



9-INCH
(Youth
Inseam
Graded)
PRO CUT

SIDE SEAM POCKETS



9-INCH
PRO CUT

SIDE SEAM POCKETS

803|814

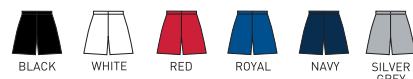


LONGER LENGTH WICKING SHORT WITH POCKETS

100% polyester wicking mesh • Full-cut • Covered elastic waistband with inside drawcord • Side seam pockets • 9-inch inseam • Youth inseam graded.

803 ADULT: S-3XL List Price **19.90**
(Upcharge for 2XL-3XL)

814 YOUTH: S-L List Price **17.00**



1P Prices subject to change without notice.

949



POLY/SPANDEX SHORT WITH POCKETS

90% polyester/10% spandex knit • Odor resistant • Wicks moisture • Full-cut • Heat sealed label • Covered elastic waistband with inside drawcord • Side seam pockets • 9-inch inseam.

949 ADULT: S-4XL List Price **22.50**
(Upcharge for 2XL-4XL)





COMPANION TO
STYLE 3710

AVAILABLE
IN TALL*



SIDE
POCKETS

3700



PREMIER JACKET

Outer shell of 100% polyester diamond tech • Lined with 100% polyester taffeta
• Front zipper • Contrast color shoulder and front inserts • Set-in sleeves • Front pockets • Elastic cuffs • Open bottom.

3700 ADULT: XS-3XL List Price **41.90** (Upcharge for 2XL-3XL)

Coordinating Coaches/Sideline pg. 38-39



3705



SOLID PANT

Outer shell of 100% polyester diamond tech • Lined with 100% polyester taffeta and 100% polyester mesh • Covered elastic waistband with inside drawcord
• Side seam pockets • Zipper on outside lower leg • Single-needle hemmed bottom.

3705 ADULT: XS-3XL List Price **37.90** (Upcharge for 2XL-3XL & Tall sizes)

ADULT TALL: LT-3XLT

***Available in Tall**



LADIES
FIT



AVAILABLE
IN TALL*



SIDE
POCKETS

3710



LADIES PREMIER JACKET

Outer shell of 100% polyester diamond tech • Lined with 100% polyester taffeta
• Ladies' fit • Front zipper • Contrast color shoulder and front inserts • Set-in sleeves
• Front pockets • Elastic cuffs • Open bottom.

3710 LADIES: XS-2XL List Price **41.90** (Upcharge for 2XL)

Coordinating Coaches/Sideline pg. 38-39



3715



LADIES SOLID PANT

Outer shell of 100% polyester diamond tech • Lined with 100% polyester taffeta and 100% polyester mesh • Ladies' fit • Covered elastic waistband with inside drawcord
• Side seam pockets • Zipper on outside lower leg • Single-needle hemmed bottom.

3715 LADIES: XS-2XL List Price **37.90** (Upcharge for 2XL & Tall sizes)

LADIES TALL: MT-2XLT

***Available in Tall**



to see our full outerwear/warmups offering visit us
online at augustasportswear.com

NEW



DROPPED TAIL

4750



SYNERGY PULLOVER

90% polyester/10% spandex knit • Wicks moisture • Heat-sealed label • Half-zip pullover style • Raglan sleeves with contrast color inserts • Self-fabric cuffs • Dropped tail.

4750 ADULT: XS-3XL List Price **43.90** (Upcharge for 2XL-3XL)



NEW



4752



LADIES SYNERGY PULLOVER

90% polyester/10% spandex knit • Wicks moisture • Ladies' fit • Heat sealed label • Half-zip pullover style • Raglan sleeves with contrast color inserts • Self-fabric cuffs • Dropped tail.

4752 LADIES: XS-2XL List Price **41.90** (Upcharge for 2XL)



4700|4701



LADIES POLY/SPANDEX JACKET

90% polyester/10% spandex knit • Wicks moisture • Ladies' fit • Heat sealed label • Front zipper • Raglan sleeves with contrast accent stripe • Self-fabric binding on cuffs.

4700 LADIES: S-2XL List Price **41.90** (Upcharge for 2XL)

4701 GIRLS: S-L List Price **39.90**



AVAILABLE IN TALL*

728|729



LADIES POLY/SPANDEX PANT

90% polyester/10% spandex knit • Wicks moisture • Ladies' fit • Heat sealed label • Low rise • Double-needle coverstitched waistband with covered elastic.

728 LADIES: S-2XL List Price **33.90** (Upcharge for 2XL & Tall sizes)

LADIES TALL: MT-2XLT

729 GIRLS: S-L List Price **31.30**

*Available in Tall



1P Prices subject to change without notice.



COMPANION TO
STYLE 4382



FRONT
POCKETS

4380|4381

BRUSHED TRICOT TRI-COLOR JACKET

Heavyweight 100% polyester brushed tricot • Front zipper • Raglan sleeves
• Contrast color inserts on front with white accent piping • Front seam pockets
• Elastic cuffs • Open bottom. (Youth has side elastic)

4380 ADULT: S-3XL List Price **41.00** (Upcharge for 2XL-3XL)

4381 YOUTH: S-L List Price **37.90**



713|714

BRUSHED TRICOT TEARAWAY PANT

Heavyweight 100% polyester brushed tricot • Covered elastic waistband with inside drawcord • Reinforced slash front pockets • Matching snaps down sides
• Single-needle hemmed bottom with extra snaps for adjustability.

713 ADULT: S-3XL List Price **37.40** (Upcharge for 2XL-3XL)

714 YOUTH: S-L List Price **35.70**



LADIES
FIT



AVAILABLE
IN TALL*

4382

LADIES BRUSHED TRICOT TRI-COLOR JACKET

Heavyweight 100% polyester brushed tricot • Ladies' fit • Front zipper • Raglan sleeves
• Contrast color inserts on front with white accent piping • Front seam pockets
• Elastic cuffs • Open bottom.

4382 LADIES: S-2XL List Price **41.00** (Upcharge for 2XL)

For Youth sizes, see style 4381.



726|727

LADIES BRUSHED TRICOT PANT

Heavyweight 100% polyester brushed tricot • Ladies' fit • Covered elastic waistband with inside drawcord.

726 LADIES: S-2XL List Price **29.40** (Upcharge for 2XL & Tall sizes)

LADIES TALL: MT-2XLT

727 GIRLS: S-L List Price **27.90**

***Available in Tall**



to see our full outerwear/warmups offering visit us
online at augustasportswear.com



**SIDE SEAM
POCKETS**



**LADIES
FIT**

**SIDE SEAM
POCKETS**

4390|4391



713|714 - pg. 49
726|727 - pg. 49

MEDALIST JACKET

Heavyweight 100% polyester brushed tricot • Front zipper • Contrast color inserts on front • Raglan sleeves • Front seam pockets • Elastic cuffs and bottom band.

4390 ADULT: S-2XL List Price **31.40** (Upcharge for 2XL)

4391 YOUTH: S-L List Price **29.70**



7755|7756

MEDALIST PANT

Heavyweight 100% polyester brushed tricot • Covered elastic waistband with inside drawcord • Side seam pockets • Contrast color side inserts • Zipper on outside lower leg.

7755 ADULT: S-2XL List Price **29.10** (Upcharge for 2XL)

7756 YOUTH: S-L List Price **26.50**

4392



713|714 - pg. 49
726|727 - pg. 49

LADIES MEDALIST JACKET

Heavyweight 100% polyester brushed tricot • Ladies' fit • Front zipper • Raglan sleeves • Contrast color inserts on front • Front seam pockets • Elastic cuffs • Open bottom.

4392 LADIES: S-2XL List Price **31.40** (Upcharge for 2XL)

For Youth sizes, see style 4391.



7752

LADIES MEDALIST PANT

Heavyweight 100% polyester brushed tricot • Ladies' fit • Covered elastic waistband with inside drawcord • Side seam pockets • Contrast color side inserts • Zipper on outside lower leg.

7752 LADIES: S-2XL List Price **29.10** (Upcharge for 2XL)

For Youth sizes, see style 7756.

1770

TRAVERSE BACKPACK

600-denier polyester with PVC coating • Zippered main compartment • Zippered compartment on bottom holds ball • Inside zippered pocket • Separate black mesh pockets on each side • Web handle at top, reinforced at stress points • Padded back for support and comfort • Adjustable padded shoulder straps.

1770: 12"W x 20"H x 8"D

Call for price



BALL COMPARTMENT

1831

TRI-COLOR BALL BACKPACK

600-denier polyester with PVC coating • Zippered main compartment with two zipper pulls • One angled white stripe on front sides • Separate black mesh zippered pockets on each side • Front black mesh pleated pocket with elastic binding holds ball • Black web handle, reinforced at stress points • Inside zippered pocket • Inside plastic key holder hook • Padded back for support and comfort • Padded shoulder straps with adjustable side tabs • Contrast white piping trim.

1831: 16½"W x 16½"H x 9"D

Call for price



417

600D POLY SMALL GEAR BAG

600-denier polyester with PVC coating • Zippered main compartment has large U-shaped opening with two zipper pulls • Separate zippered compartments at each end • Zippered front pocket • Matching web handles with self-fabric handle wrapper, reinforced at stress points • Adjustable and detachable matching shoulder strap with black rubber shoulder guard • Plastic hardware • Self-fabric piping • Removable inside bottom board.

417: 20"W x 10"H x 10"D

Call for price



1911

LARGE TRI-COLOR SPORT BAG

600-denier polyester with PVC coating • Zippered main compartment has large U-shaped opening with two zipper pulls • Side pocket • Inside zippered pocket • Black bottom with white accent piping • Adjustable and detachable shoulder strap • Plastic hardware.

1911: 24"W x 13"H x 10"D

Call for price



1920

TRI-COLOR DRAWSTRING BACKPACK

210-denier nylon with PU coating • Hemmed top with drawcord closure • Zippered front pocket • Black bottom with white accent piping • Web tab at bottom corner for reinforcement.

1920: 14"W x 18"H

Call for price



to see our full offering of bags visit us online at augustasportswear.com

unmatched reliability
team spirit.

