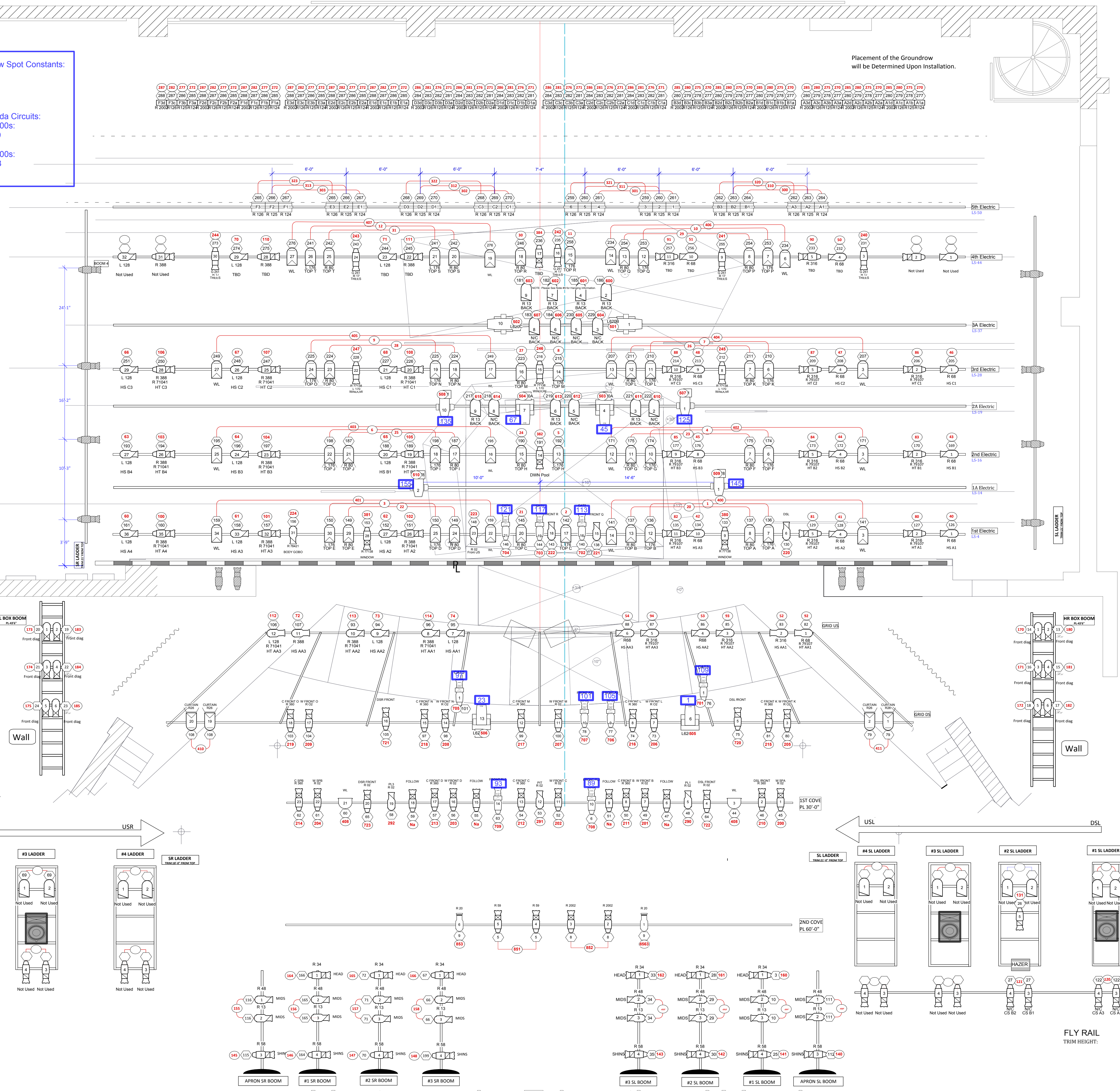
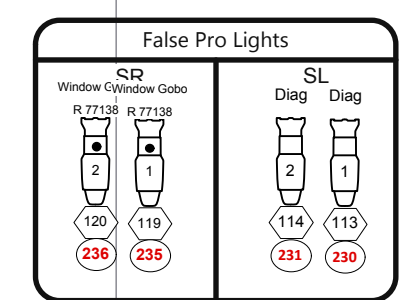


Sea Changer Constants: 63, 84, 102, 147  
 Follow Spot Constants: 47, 51, 55, 59  
 VL500 Constants: 31, 178  
 Pagoda Circuits: VL3000s: SR: 9, SL: 6; VL2500s: HR: 8, HL: 7



**KEY**

**Instrument Legend**

- Air 3800 6x9 4 1KW FEL
- Air 3800 6x12 60 1KW FEL
- Air 3800 6x16 12 1KW FEL
- Air 3800 6x22 1KW FEL
- Source 4 19deg 15 750 W HPL
- Source 4 26deg 68 750 W HPL
- Source 4 36deg 12 750 W HPL
- PAR 64 WFL 56 1KW PAR WFL
- 3 Cell Sky Cyc
- 14" SCOOP 2 1KW
- 26 Deg Sea Changer
- VL 3500
- VL 2500 Spot
- VL 500 Wash
- PAR 64 NSP
- SOURCE FOUR 50 DEG
- SOURCE FOUR 70 DEG

**Accessories**

- 10" Barndoor
- Gobo

**Instrument Key**

- Color Purpose
- Unit Number
- Dimmer
- Channel
- Unit Number
- U-Dimmer Channel

**Notes**

- INSTRUMENT PLACEMENT IS TYPICAL FOR THE FIRST ELECTRIC THROUGH THE FOURTH ELECTRIC FOR DIMENSIONS.
- INSTRUMENT PLACEMENT AND DIMENSIONS ARE TYPICAL FOR ALL BOOMS AND LADDERS. DIMENSIONS ARE SHOWN ON THE PLOT.
- THERE IS A STANDARD 18" BETWEEN INSTRUMENTS UNLESS OTHERWISE NOTED.
- COVES, ELECTRICS AND BOX ROOMS ARE NOT IN SCALE IN RELATION TO THE PLASTER LINE. PLEASE SEE SECTION PLOT FOR INFORMATION.
- THE BLUE LINE IS REPRESENTING THE CENTER LINE FOR THE SCENERY.
- PARS ON LADDERS ARE NOT BEING USED. INSTEAD OF PARS, PLEASE HANG ONE 26 SOURCE 4 EACH LADDER.
- FLOOR MOUNTS LOCATION IS TBD.
- SHADOW LIGHTS WILL BE KEPT IN THE WINGS ON ROLLING CARTS. THEY NEED TO BE ABLE TO TRAVEL 15'.
- PLEASE SEE SECTION PLOT FOR HANGING INFORMATION AND CONSULT WITH LD OR LD TEAM.
- PLEASE LEAVE THE HAZER RIGHT BEHIND OF SL 3RD LEGS. WE WILL ADJUST AFTER SET IS DONE.
- THERE WILL BE 4 FOLLOW SPOTS IN #1 COVE.

**SPRING AWAKENING**

**School of THEATRE & DANCE**  
 Kent State University

SPRING 2013 - STUMP THEATRE

DIRECTOR: MICHAEL RUPERT

LIGHTING DESIGNER: JAKYUNG SEO  
 seo1@kent.edu/513-833-1577

Assistant Lighting Designer:  
 MARGARET PEEBLES  
 NICK ROSECRANS  
 MASTER ELECTRICIAN: CARLY SHINER  
 SCENIC DESIGNER: HOLLY BRUER  
 PROJECTIONS: CYNTHIA HOFFMAN  
 COSTUME DESIGNER: SUSAN WILLIAMS  
 SOUND DESIGNER: BRIAN CHISMAR

SCALE: 1/4" = 1'  
 PLATE: 1 OF 4  
 FILE: SpringAwakeningFinalPlotV9  
 LAST UPDATE: FEB-13  
 DWG BY: MARGARET PEEBLES  
 SEO & ROSECRANS

SPRING AWAKENING  
 LIGHTING PLOT  
 SPRING 2013

**1 of 4**