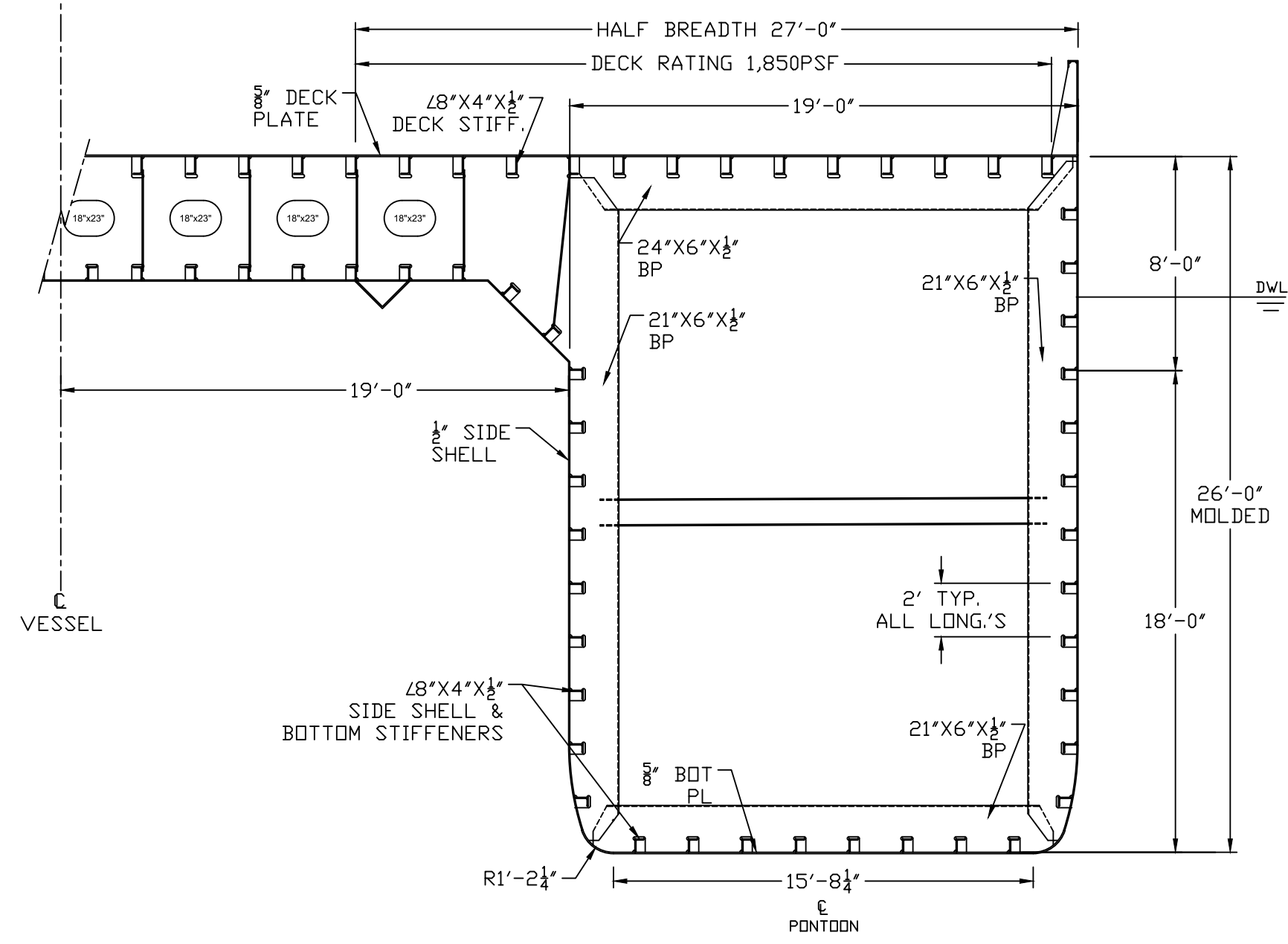
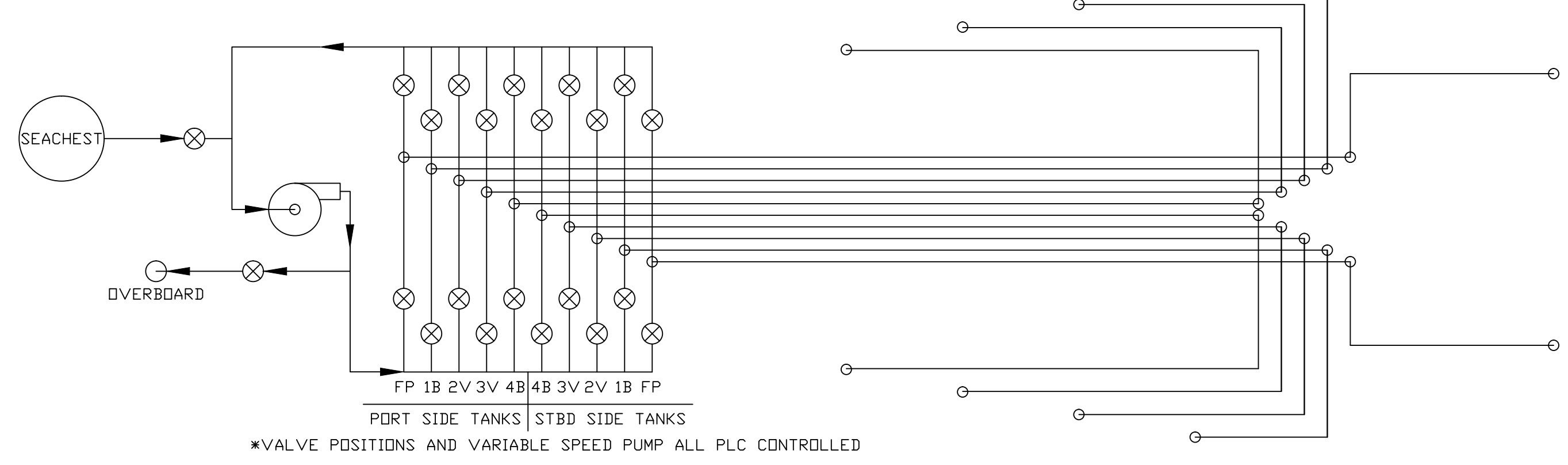


TYPICAL MID-SHIP BULKHEAD
SCALE: 3/8"=1'-0"



TYPICAL MID-SHIP FRAMING
SCALE: 3/8"=1'-0"



AUTOMATED BALLAST PIPING SYSTEM SCHEMATIC
SCALE: 1/8"=1'-0"

400ft - 19ft Demi Hulls

Speed kts	Required Break hp for Vessel at 18-foot Draft				Fuel Flow (gph)
	Pe (hp)	Pe (hp)	Pe (hp)	Ps (hp)	
5	107.7	82.6	66.7	600.0	7.9
7	286.1	180.9	183.2	216.7	18.7
9	591.0	306.6	304.2	400.6	35.6
11	1057.8	593.4	537.7	729.7	59.7
13	1712.5	763.0	694.0	1056.5	91.5
15	2627.8	1499.7	1585.3	1904.3	133.7

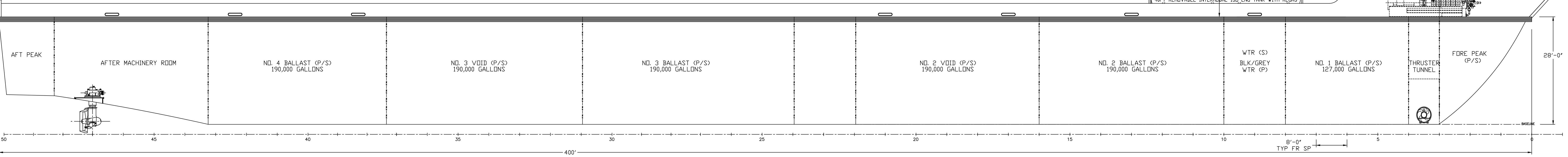
400ft - 19ft Demi Hulls

Speed kts	Required Break hp for Vessel at 14-foot Draft				Fuel Flow (gph)
	Pe (hp)	Pe (hp)	Pe (hp)	Ps (hp)	
5	78.0	157.8	127.4	121.0	5.9
7	200.6	336.9	341.1	292.9	13.7
9	412.6	567.2	562.7	514.2	25.9
11	736.4	817.4	740.8	764.9	43.3
13	1390.3	1230.7	1119.5	1246.8	76.0
15	2254.6	1499.7	1585.3	1779.9	116.7

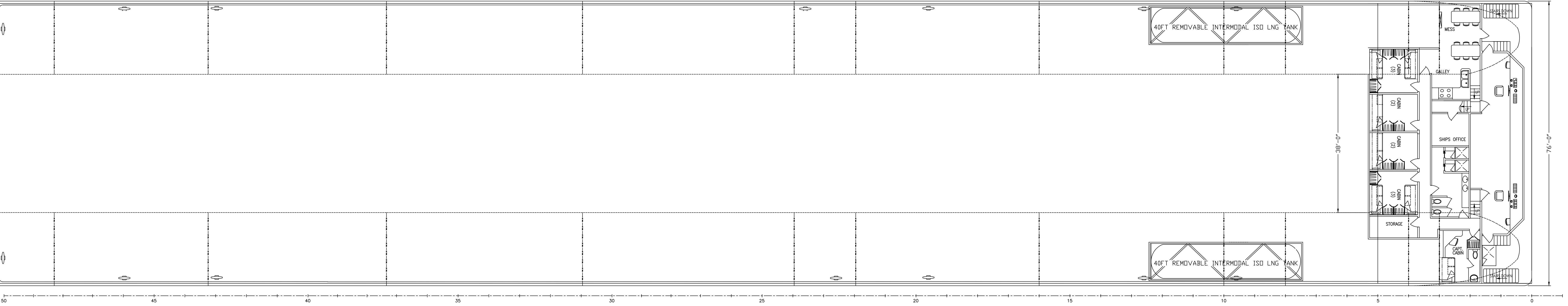
Aluminum Vessel Weight/Displacement/DWT (Dead Weight Tons in Long Tons) (RO/RO or LO/LO)

Light Ship Approximate	925 Its
Vessel Full Fuel and Water (Fuel 15,000gals)	1,000 Its
Lightship Draft	3 ft
Displacement 6ft Draft 2,200Its	1,275 dwt
Displacement 10ft Draft 3,800Its	2,875 dwt
Displacement 14ft Draft 5,450Its	4,525 dwt
Displacement 18ft Draft 7,120Its	6,195 dwt
Range with 25,000gals at 13kts (1,000 res)	3,250 NM
Range with 25,000gals at 10kts (1,000 res)	4,500 NM
Approximate Number of Container Boxes (with 2 Cranes)	
20ft TEUs	384
40ft TEUs	192
45ft Boxes	158
53ft Boxes	144

"PROTECTED DESIGN"
2012-Work-Cat-Engineering



OUTBOARD PROFILE
SCALE: 1/4"=1'-0"



GENERAL ARRANGEMENT & 01 DECK
SCALE: 1/4"=1'-0"

REFERENCES

NO.	DESCRIPTION	COMPANY	DWG. NO.
1	???????	???????	???????

NOTES

NO.	DESCRIPTION
1	ALL WELDING SHALL BE PERFORMED ACCORDING TO ABS RULES FOR BUILDING AND CLASSING ALUMINUM VESSELS -OR- ABS RULES BUILDING AND CLASSING VESSELS UNDER 90METERS
2	SCANTLING SIZES AND DETAILS ARE BASED ON ABS RULES FOR HIGH SPEED NAVAL CRAFT AT 15KTS -OR- ABS RULES BUILDING AND CLASSING VESSELS UNDER 90METERS, FULL OCEAN

VESSEL INFORMATION

NAME	WCE400
ABS I.D. #	????????????
USCG #	????????????
DIMENSIONS	400'X76'X20'
BUILDER	????????????
HULL #	WCE-RC1

THIS DRAWING IS MARKED PRELIMINARY AND NOT TO BE USED FOR CONSTRUCTION.

1	UPDATED TO SHOW CURRENT LNG PRIME MOVER	10/07/13	R/JN
No.	Revisions	Date	By
		Drw. R/JN	WCC-400LNG
PRODUCED FOR: WORK CAT ENGINEERING		Appr. R/JN	JOB DESCRIPTION GENERAL ARRANGEMENT PROFILE & MIDSHIP
Scale: 1/4"=1'-0" Date: 10/12/12		Rev. No. WCE-400-01	Revisions: