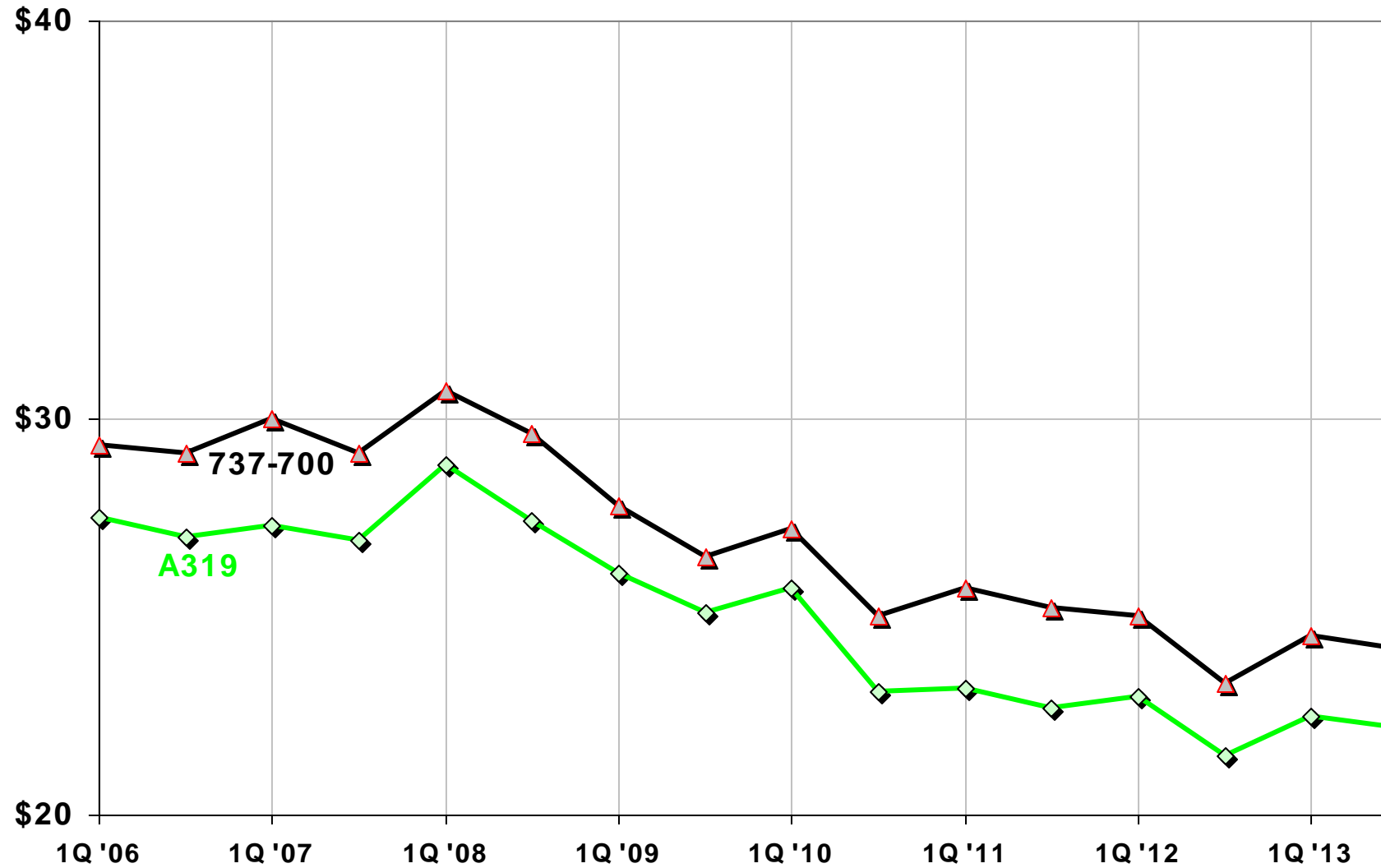


What we're going to cover

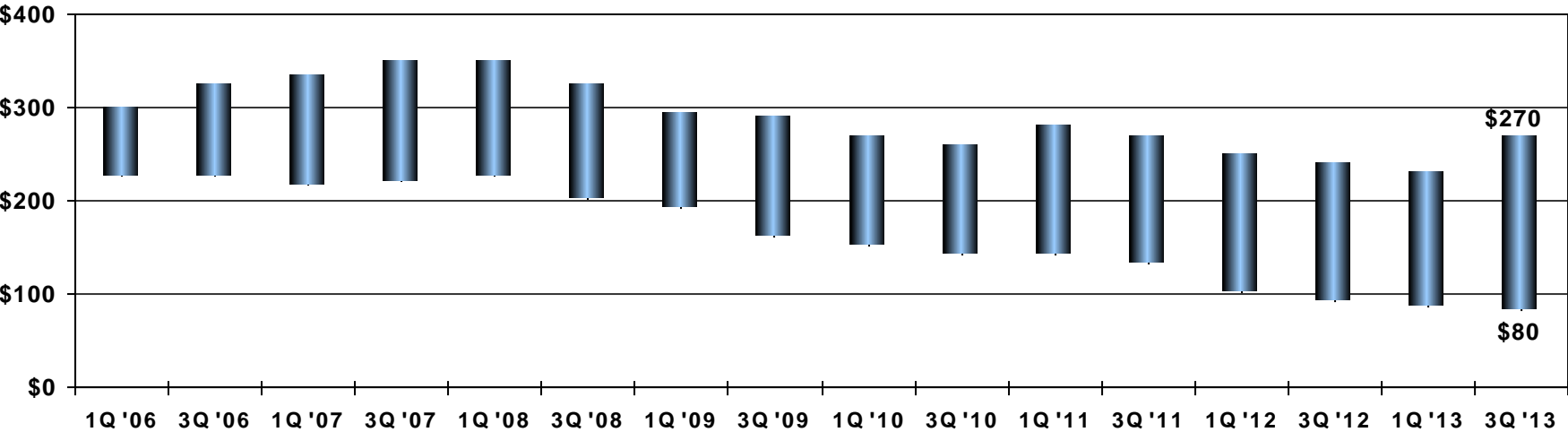
- Brief look at *general CMV trends* for:
 - Single Aisle: **A319, A320, 737-700, 737-800**
 - Twin Aisle: **A330-200, A330-300, 767-300ER, 777-200ER, 777-300ER**
- Specific values and comments on:
 - FIVE current generation, in-service aircraft types: **A320, A330-300, 737-800, 777-300ER, 777 Freighter**
 - FIVE new technology jetliners currently under development:
development: **CS100, A320NEO, A350-900XWB, 737-787-9**



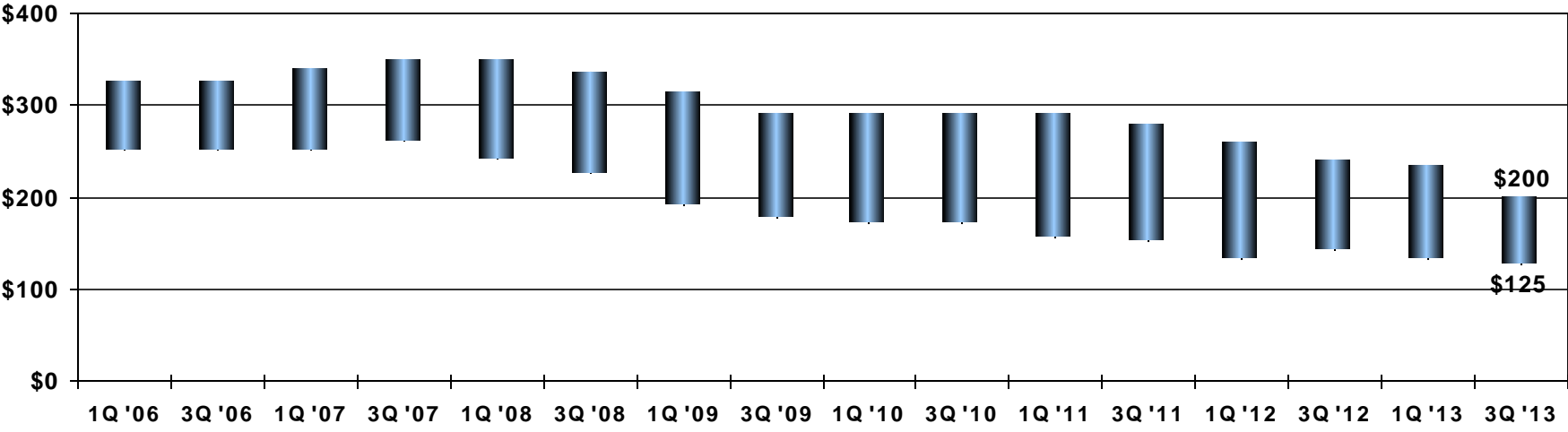
CMV Trends, Five Year Old Aircraft (then current US\$ millions)



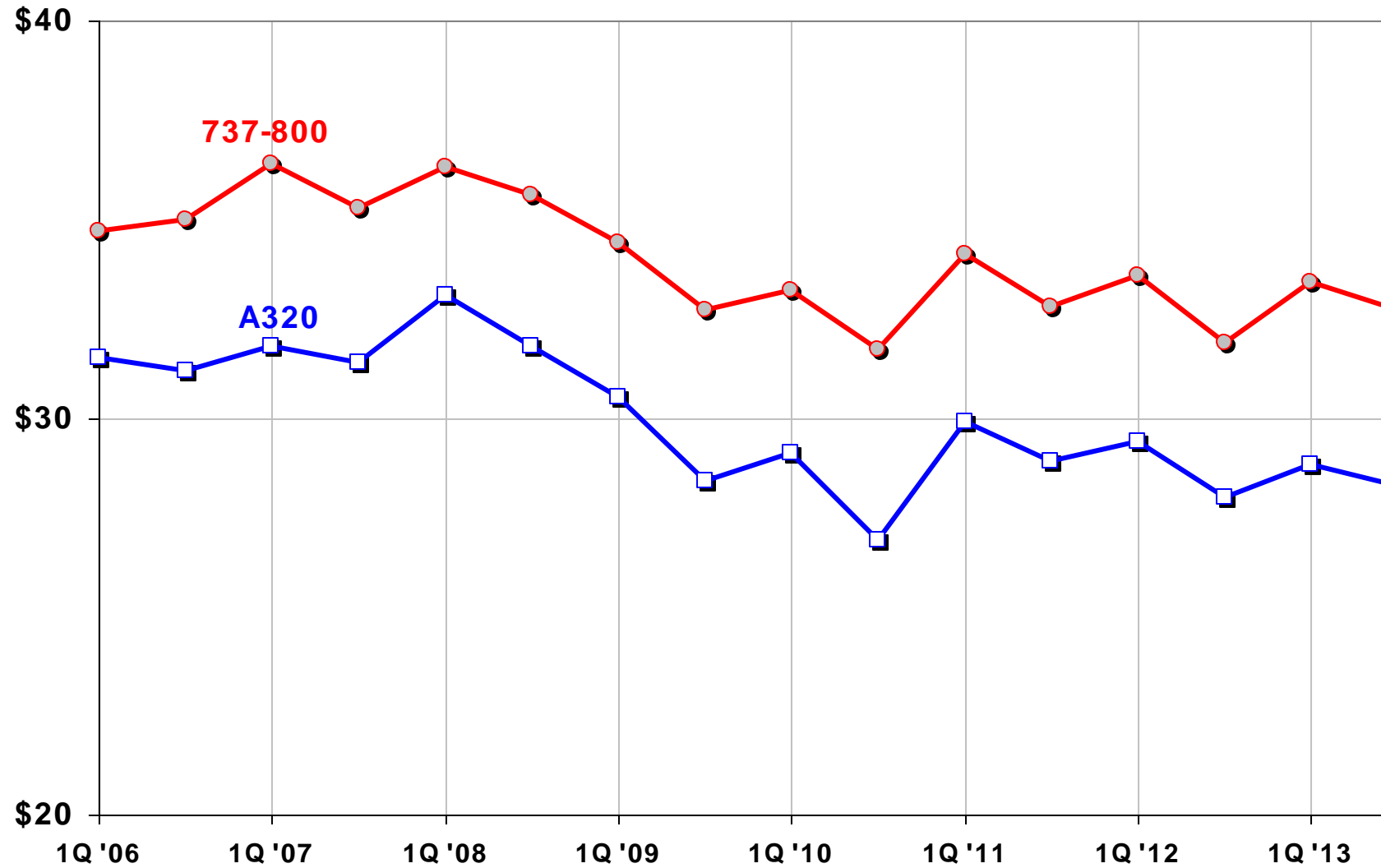
A319 Monthly Operating Lease Rental Range (\$000s)



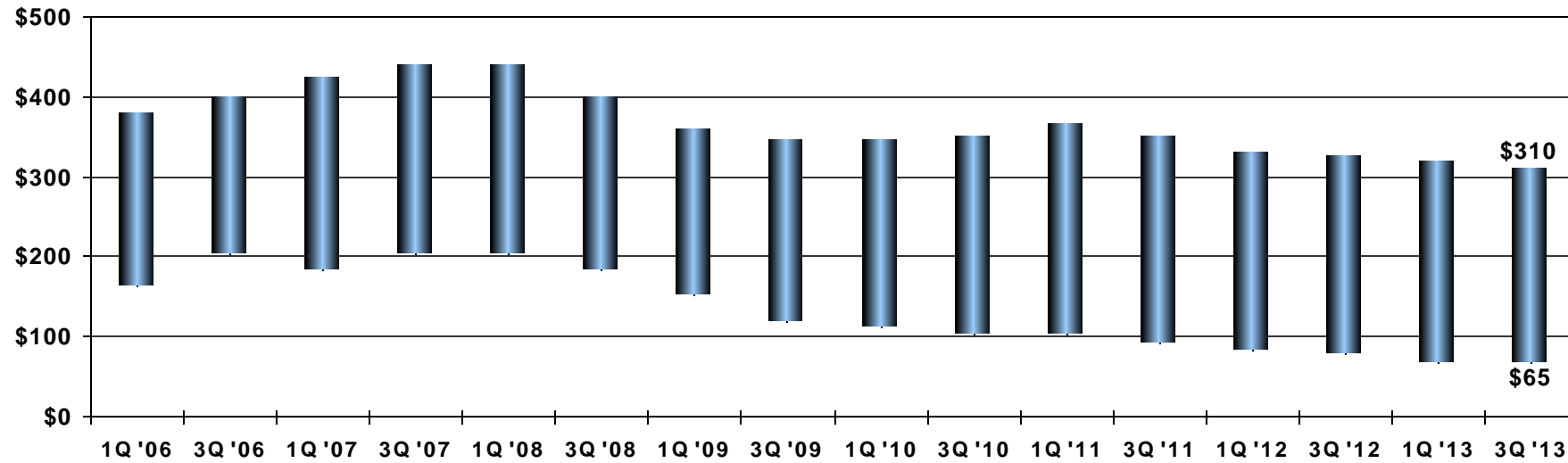
737-700 Monthly Operating Lease Rental Range (\$000s)



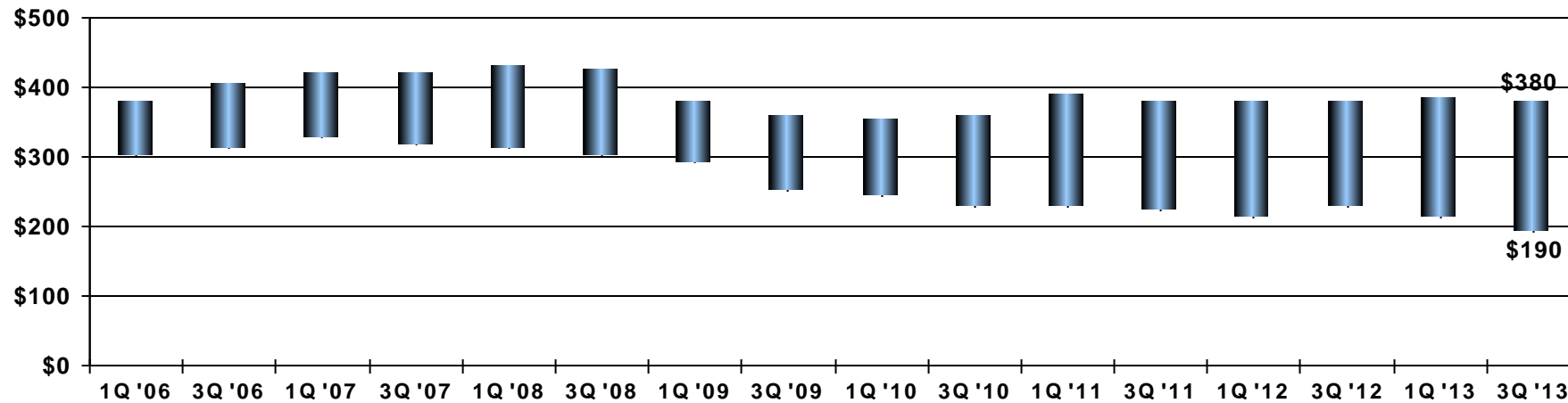
CMV Trends, Five Year Old Aircraft (then current US\$ millions)



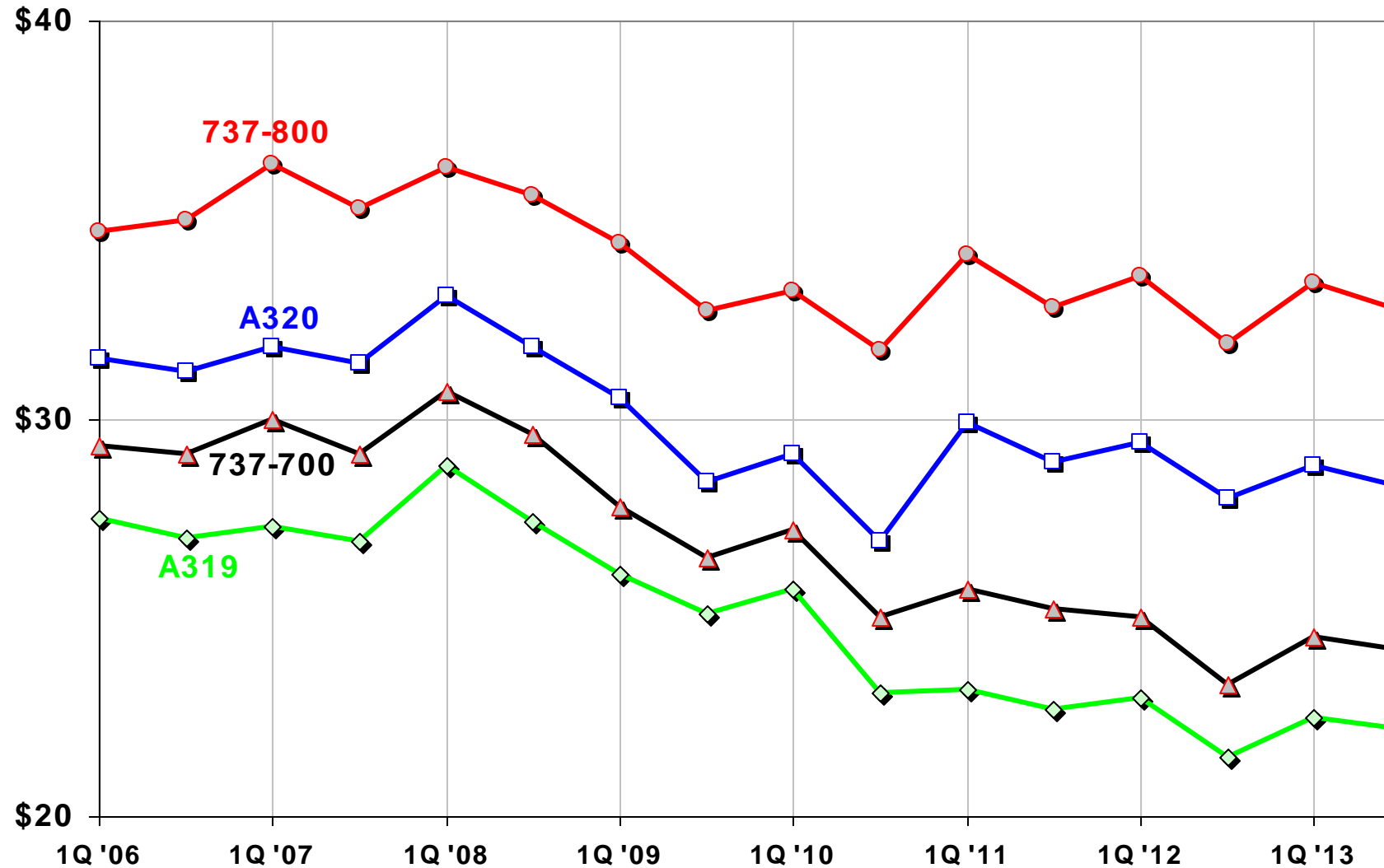
A320-200 Monthly Operating Lease Rental Range (\$000s)



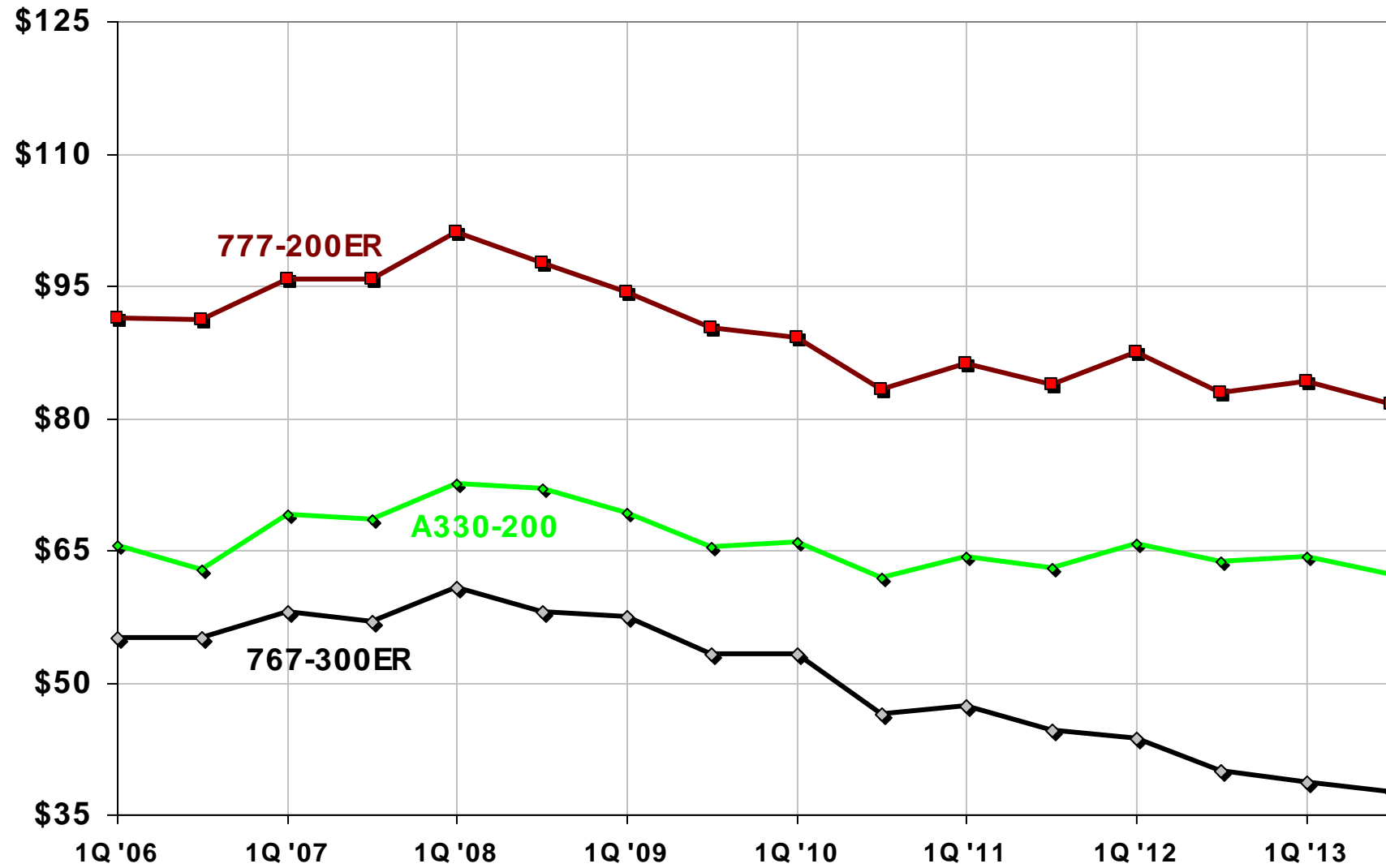
737-800 Monthly Operating Lease Rental Range (\$000s)



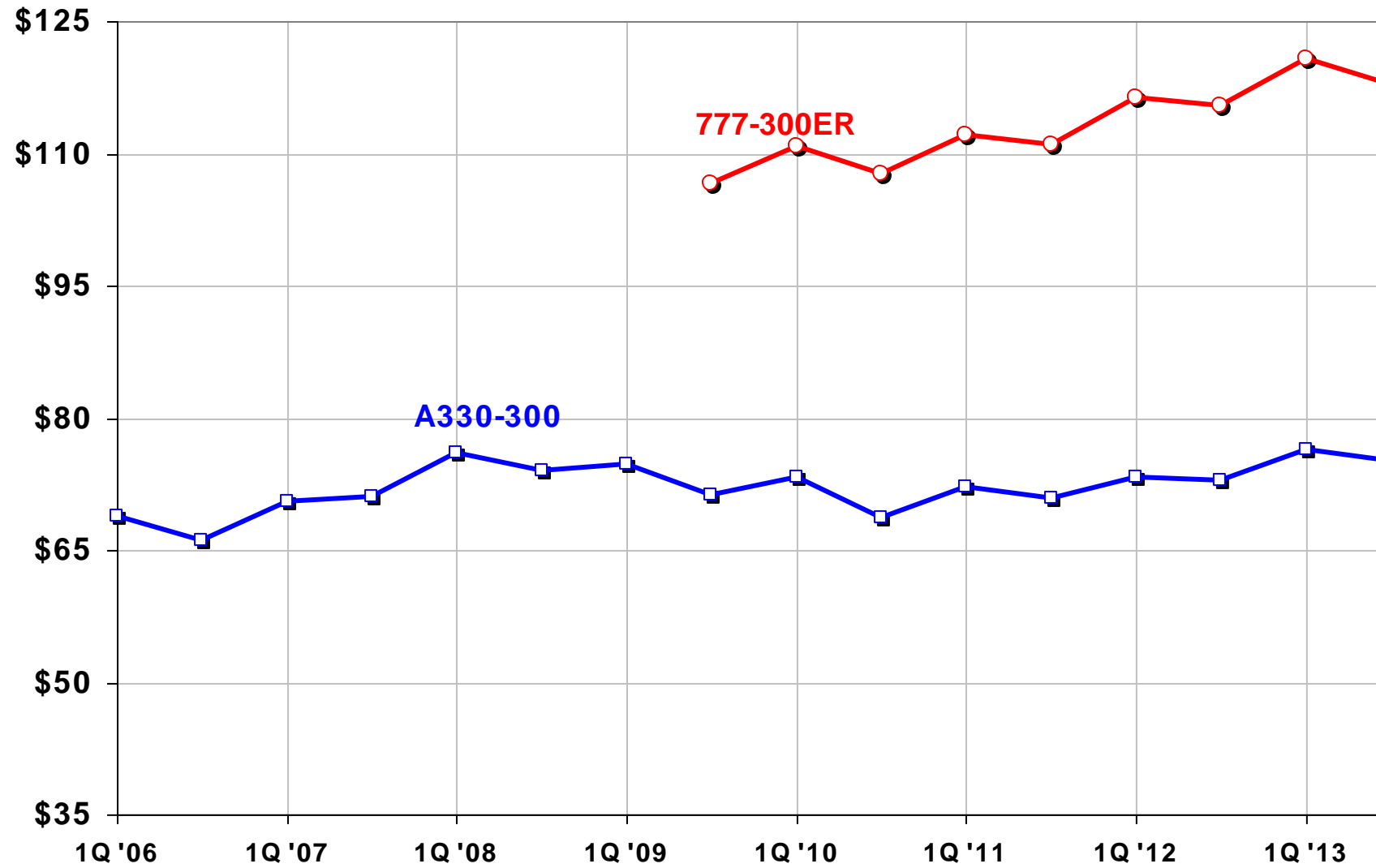
CMV Trends, Five Year Old Aircraft (then current US\$ millions)



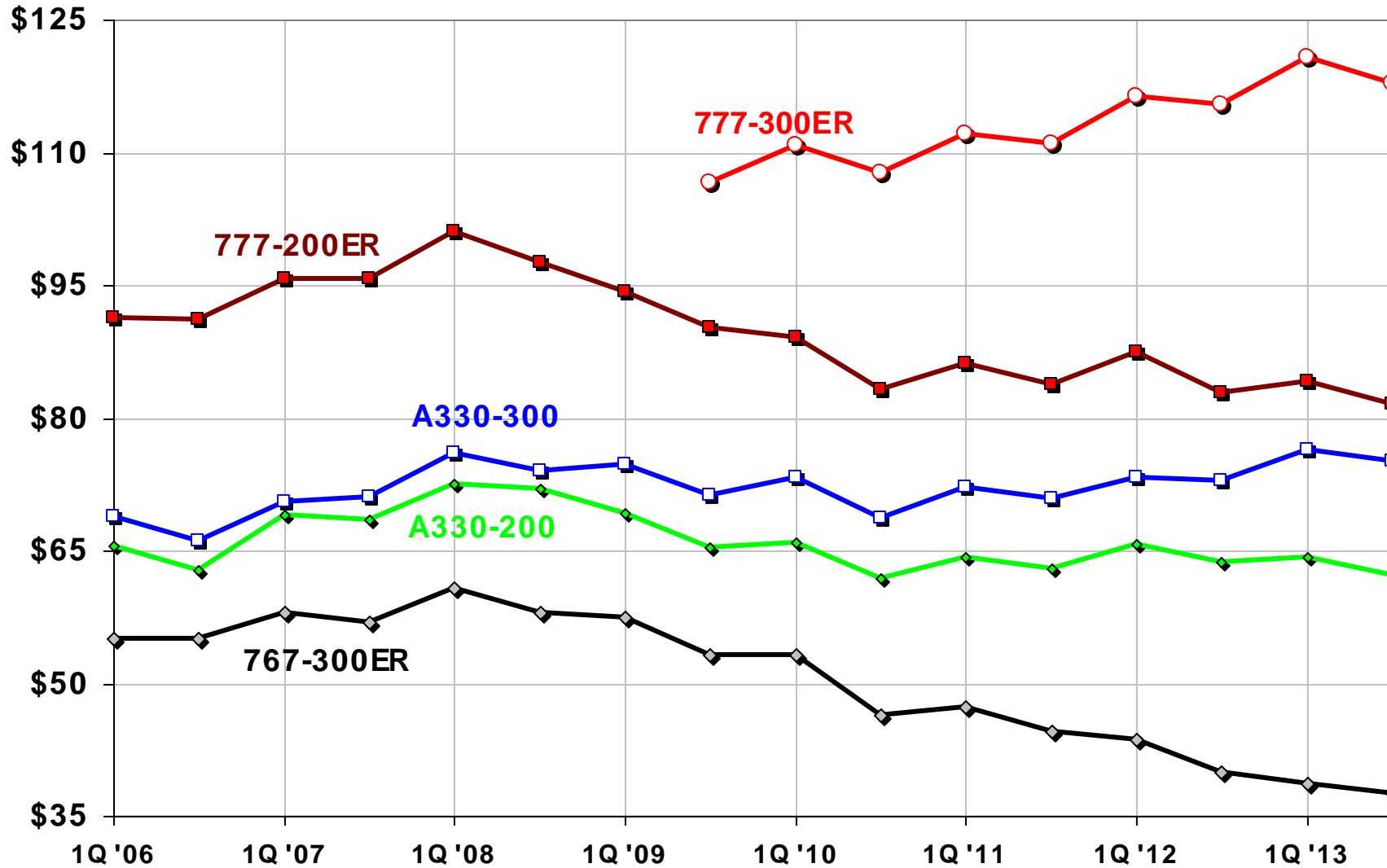
CMV Trends, Five Year Old Aircraft (then current US\$ millions)



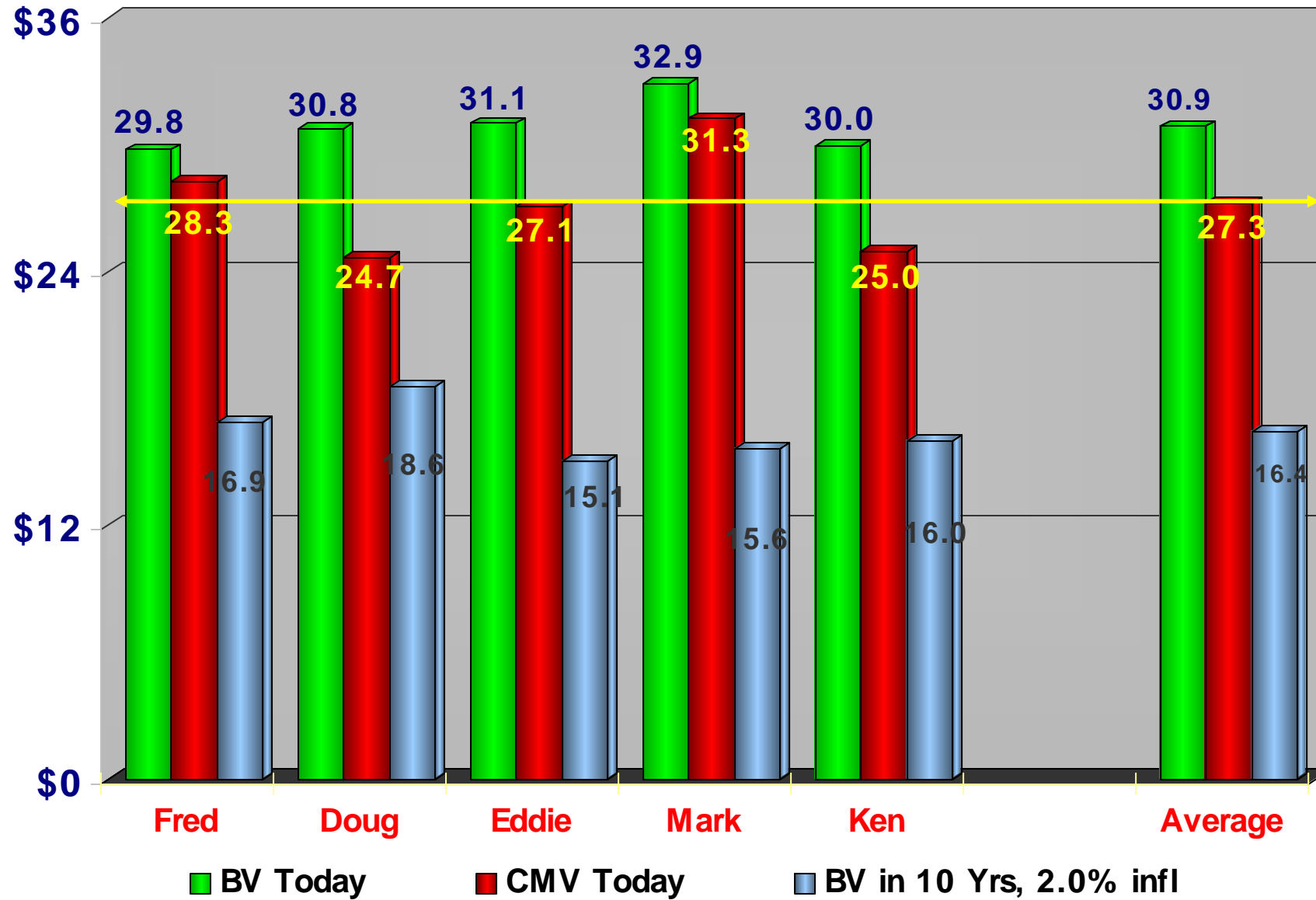
CMV Trends, Five Year Old Aircraft (then current US\$ millions)



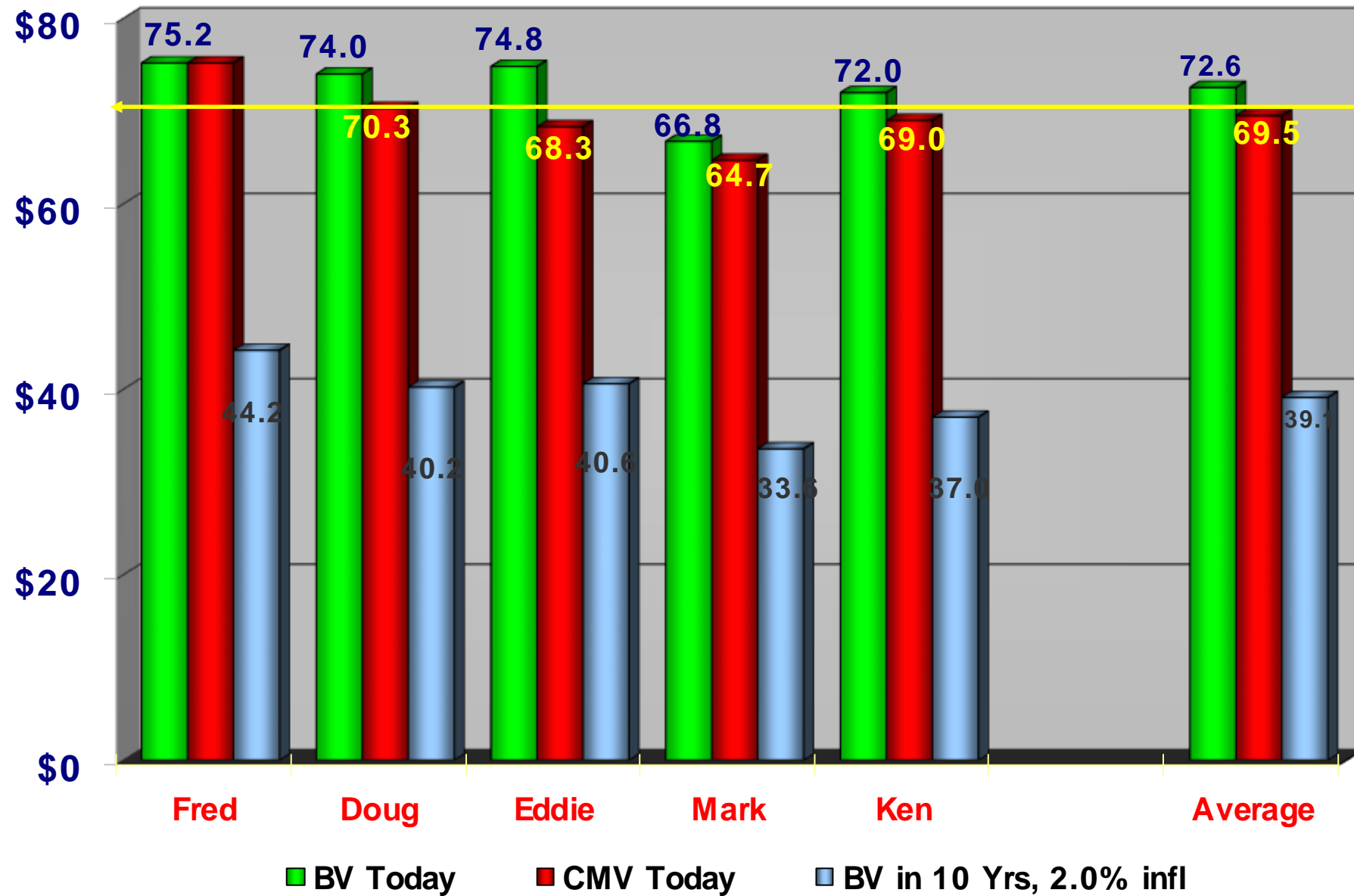
CMV Trends, Five Year Old Aircraft (then current US\$ millions)



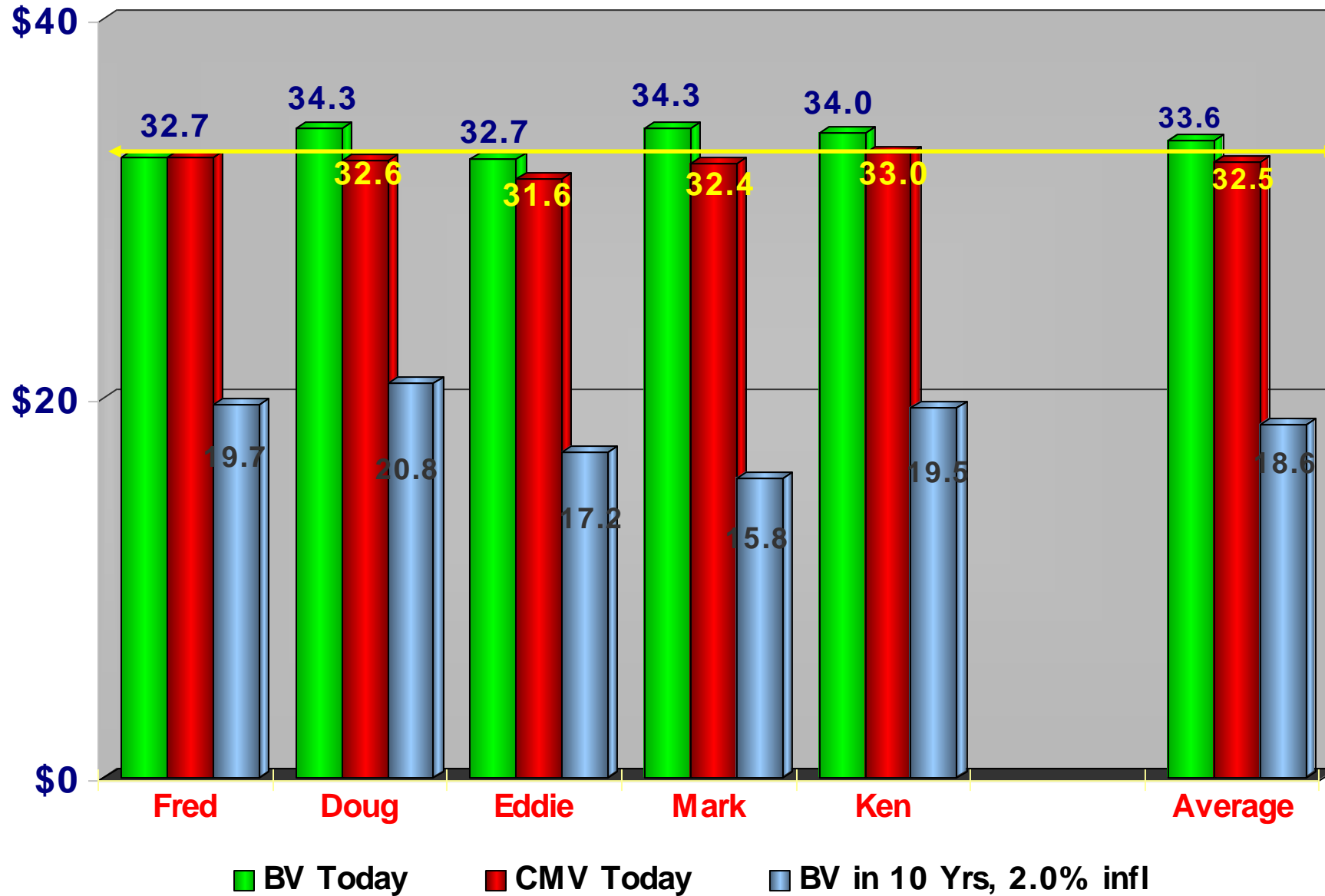
A320-200, 2008, CFM56-5B4/3, 77T



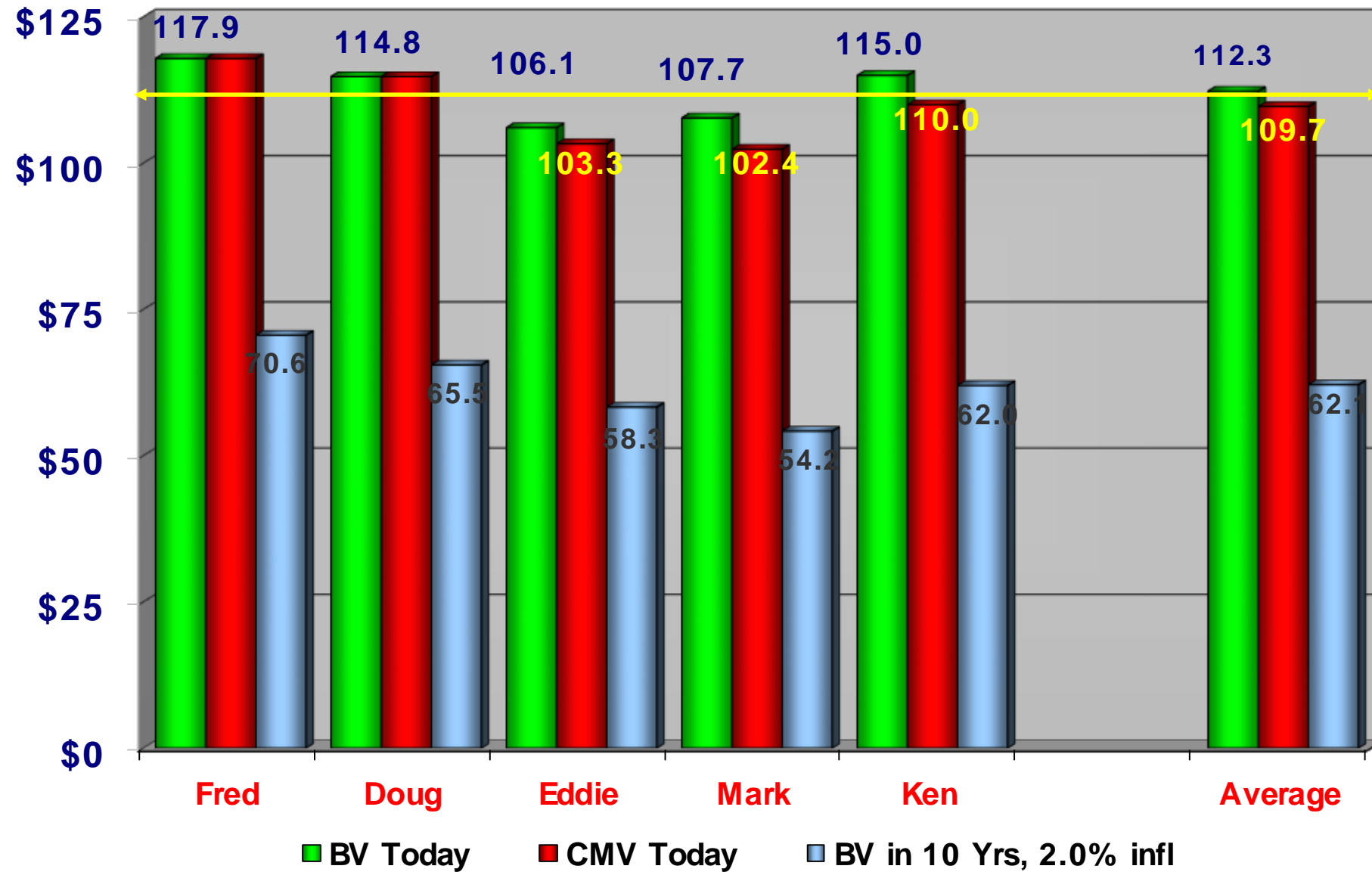
A330-300, 2008, Trent 772B-60, 233T



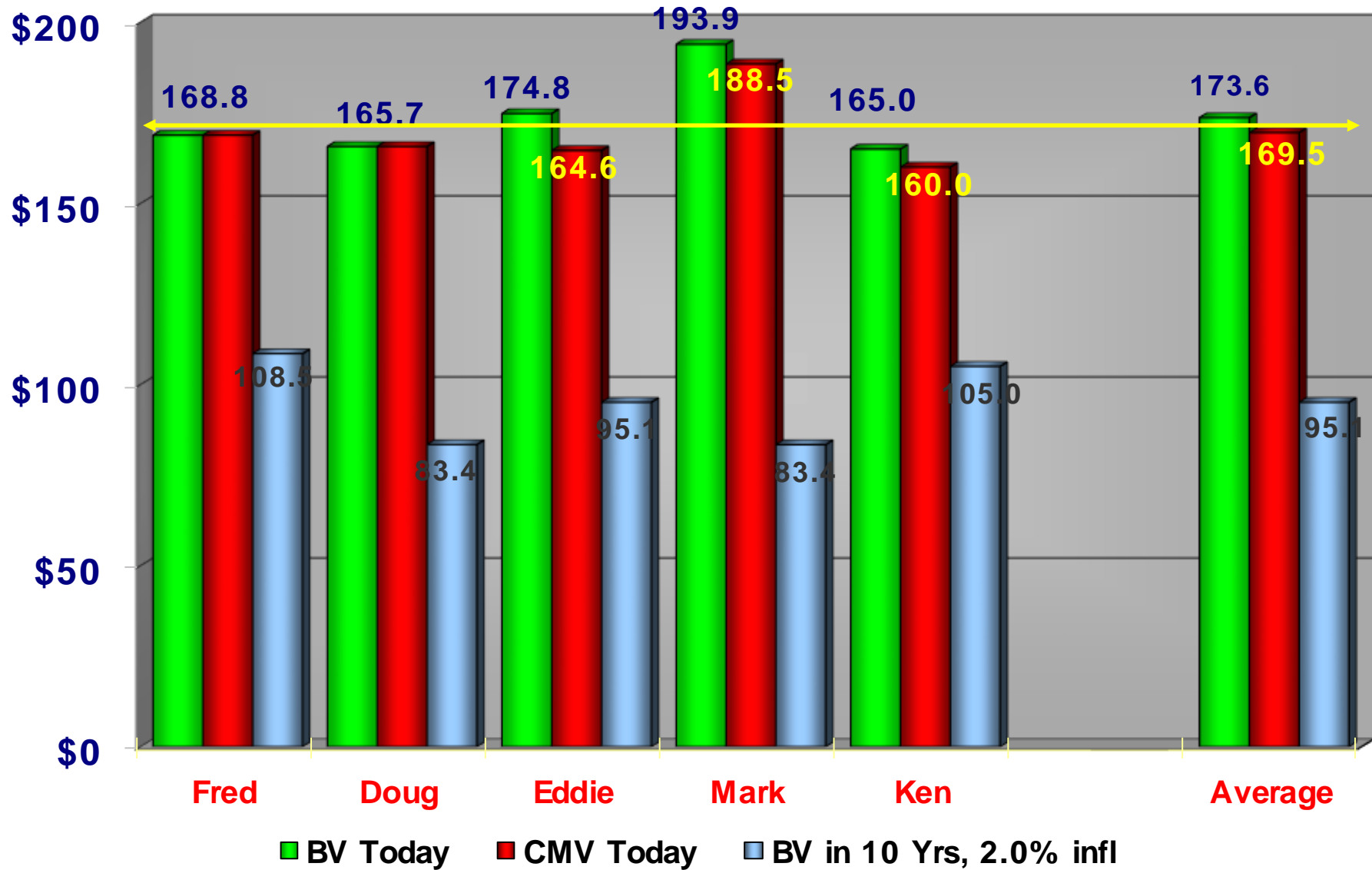
737-800W, 2008, CFM56-7B26/3, 172,500#



777-300ER, 2008, GE90-115BL2, 760,000#



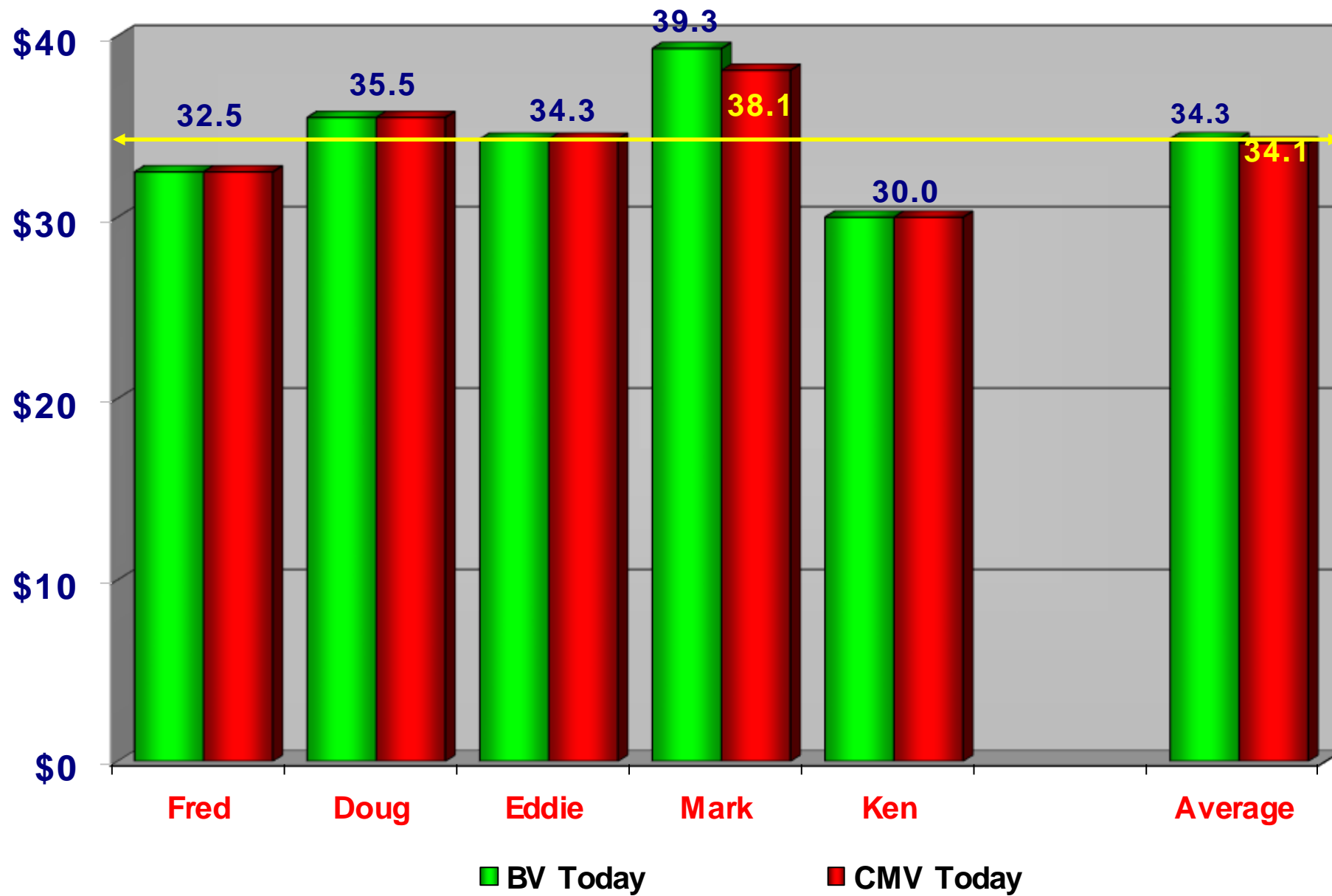
777 Freighter, Factory New, GE90-110B1, 766,800#



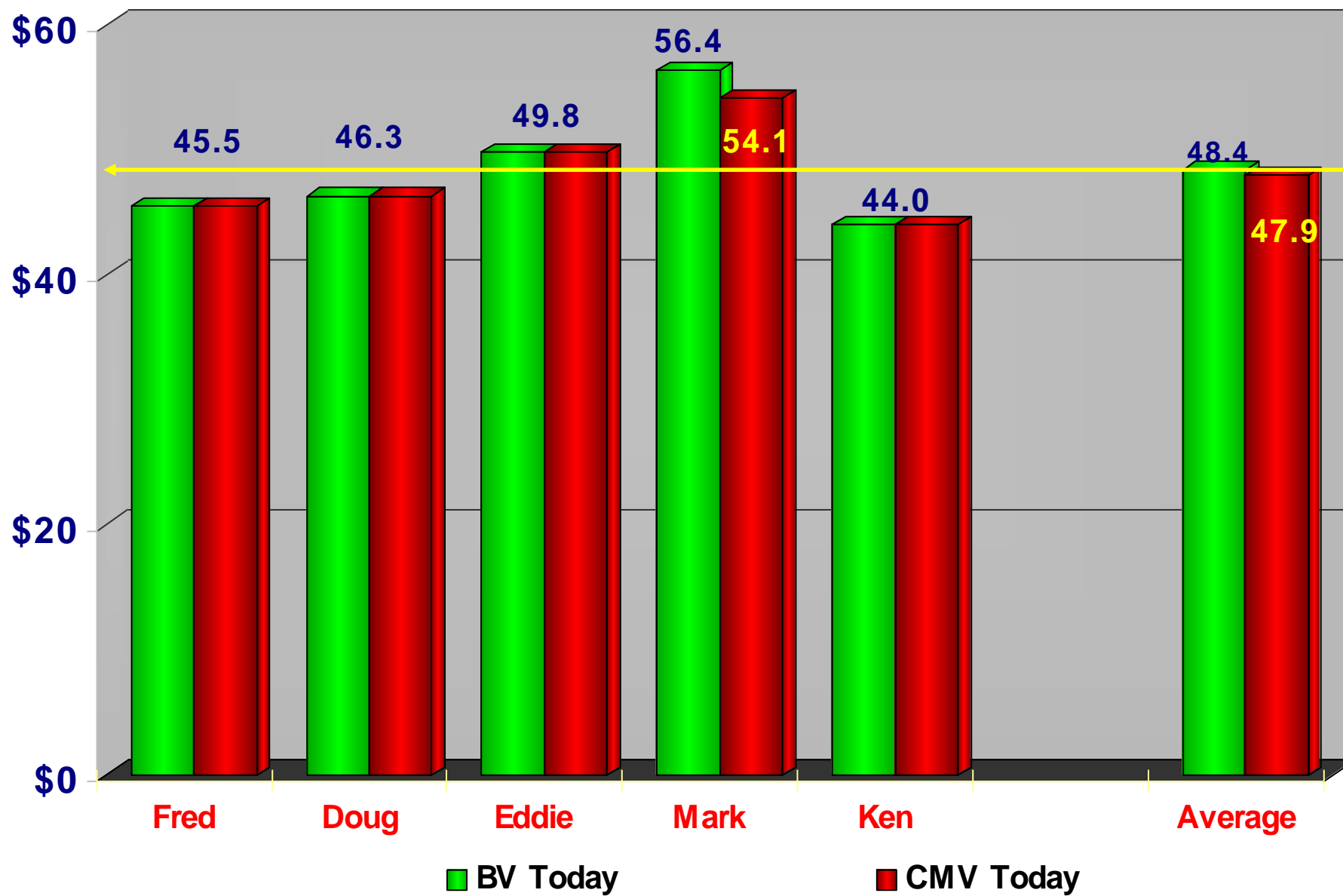
- **The purchase price, in 2013 \$, that you would likely have to pay to purchase a “reasonable” number of aircraft, not a launch/strategic sale, but also not necessarily a one or two airplane purchase.**



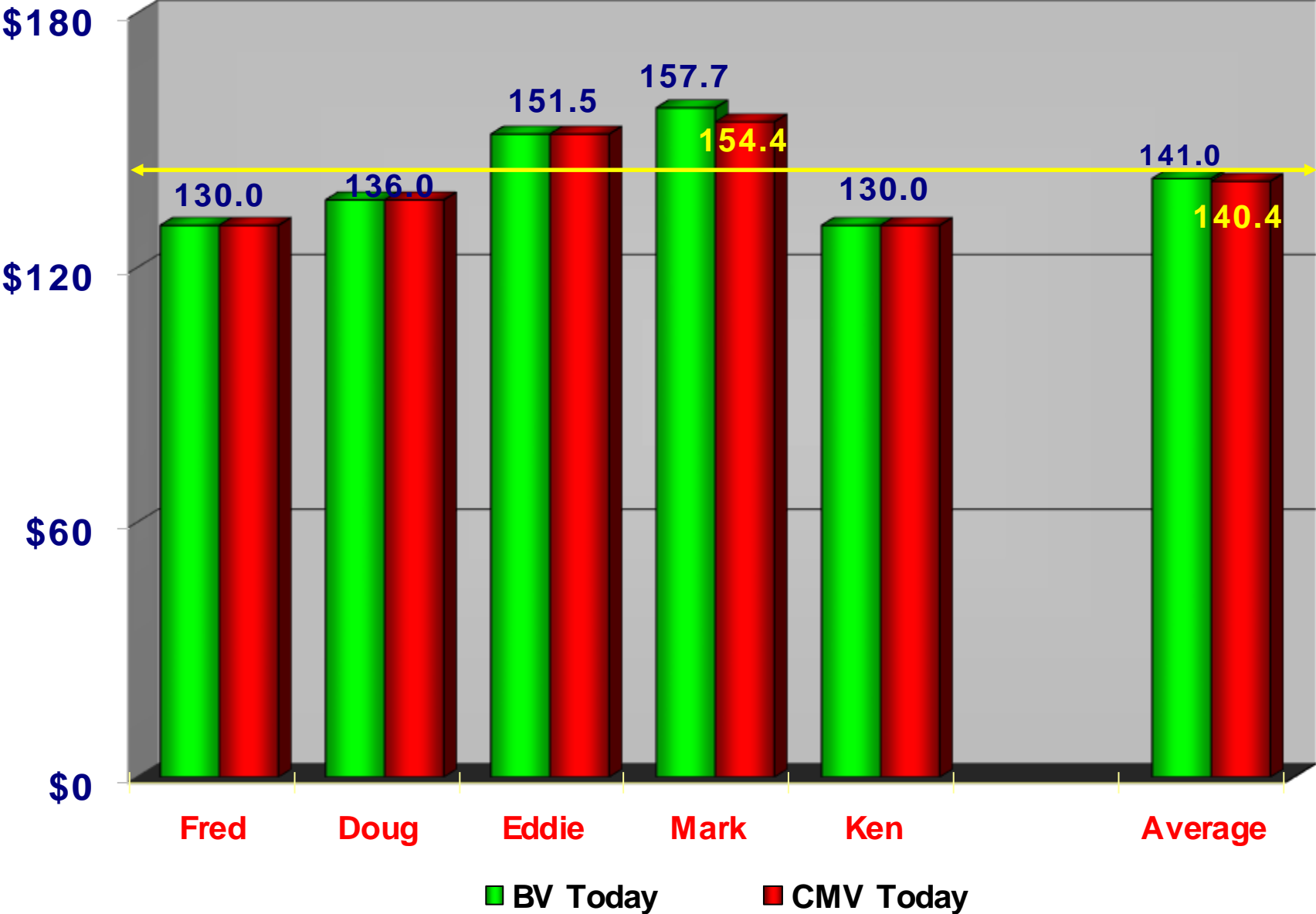
CS100, 4Q 2013 Contract Date



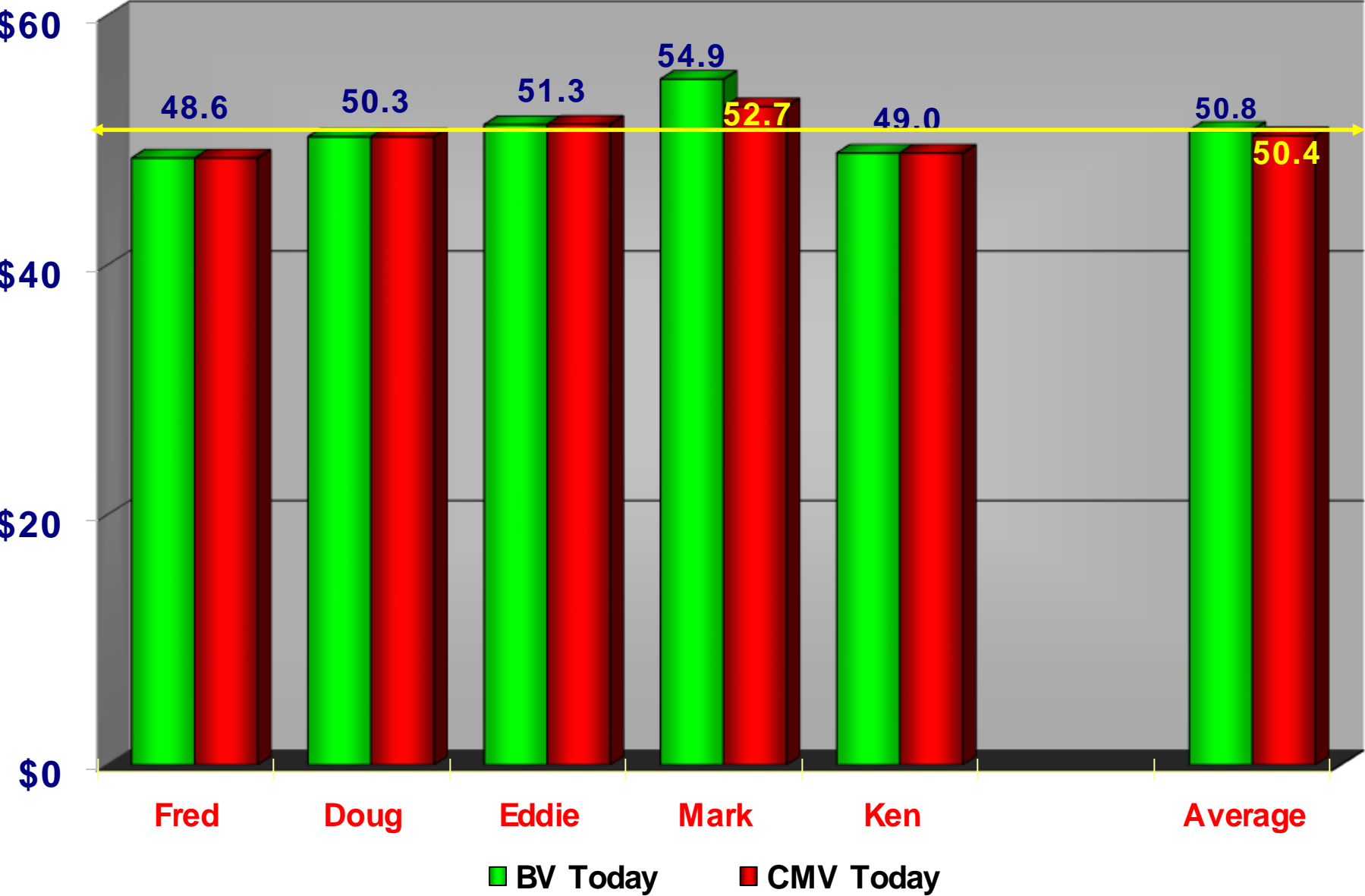
A320NEO, 4Q2013 Contract Date



A350-900XWB, 4Q2013 Contract Date



737-8MAX, 4Q2013 Contract Date



787-9, 4Q 2013 Contract Date

