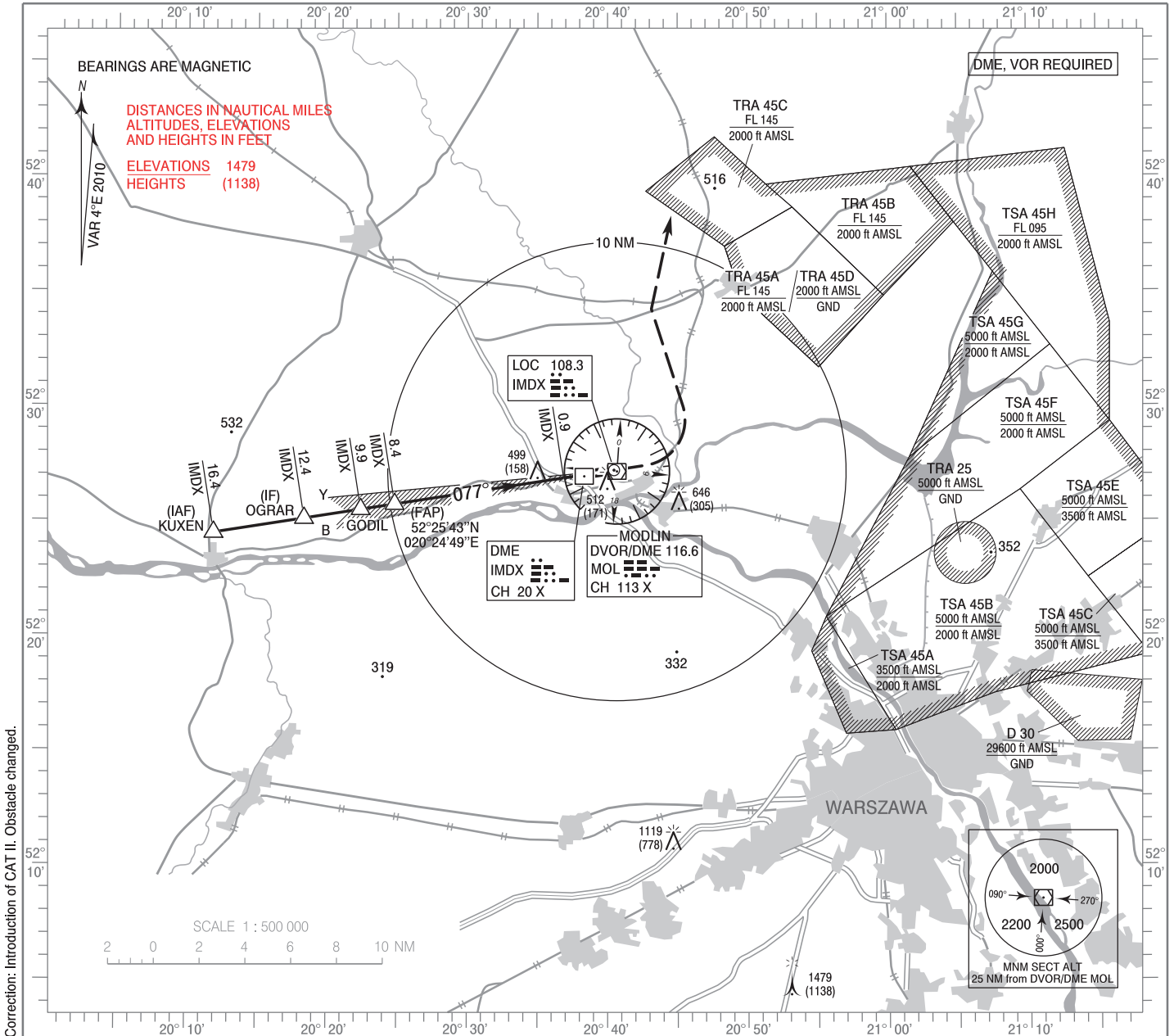


**INSTRUMENT  
APPROACH  
CHART - ICAO**

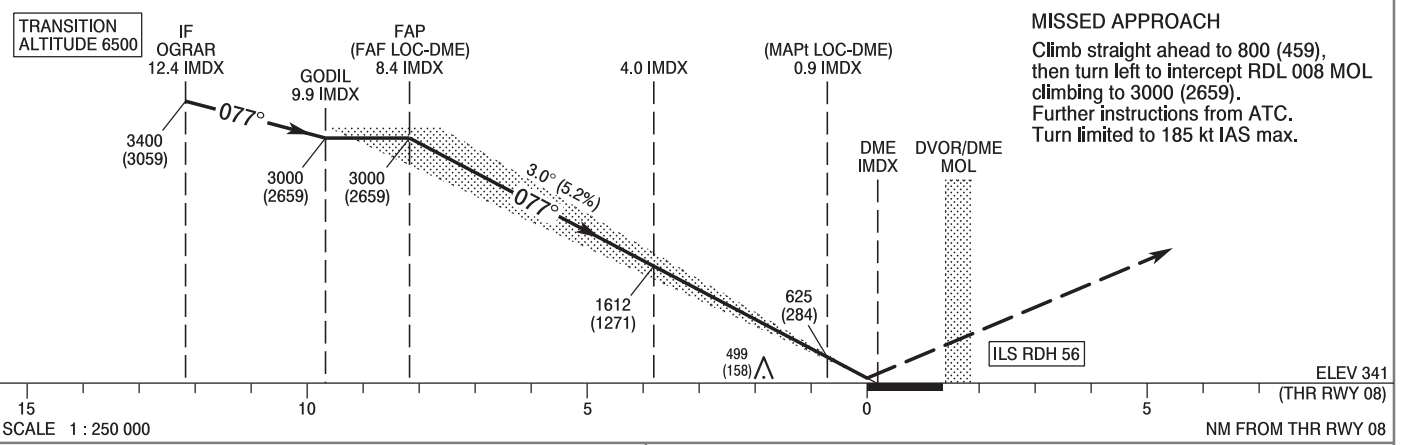
AERODROME ELEV 341 ft  
THR RWY 08 ELEV 341 ft  
HEIGHTS RELATED TO THR RWY 08

APP	125.050	TWR	123.925
	128.800	INFORMATION	120.325
DIRECTOR	129.375		

**WARSZAWA / Modlin  
ILS CAT II or LOC  
RWY 08 (CAT A/B/C/D)**



Correction: Introduction of CAT II. Obstacle changed.



OCA (OCH)					Distance FAF - MAPt 7.5 NM								
Cat. of ACFT		A	B	C	D	Speed	kt	80	100	120	140	160	180
		Straight - in	Cat. I	528 (187)	540 (199)	548 (207)	559 (218)	Time	min : s	5 : 35	4 : 28	3 : 44	3 : 12
Cat. II	440 (99)		457 (116)	469 (128)	483 (142)	Rate of descent	ft / min	430	540	640	750	850	960
LOC-DME	750 (409)		750 (409)	750 (409)	750 (409)								
Circling*		810 (469)	840 (499)	940 (599)	1030 (689)	Distance	7	6	5	4	3		
						Altitude (height)	2570 (2229)	2250 (1909)	1930 (1589)	1610 (1269)	1290 (949)		

**INSTRUMENT  
APPROACH  
CHART - ICAO**

**WARSZAWA / Modlin**  
ILS CAT II or LOC  
RWY 08 (CAT A/B/C/D)

FIX / POINT	LATITUDE	LONGITUDE	FIX FORMATION	
IAF REP KUXEN	52°24'27.7"N	020°11'54.4"E	261.27° GEO (257° MAG) LOC IMDX	16.37 NM DME IMDX
IF REP OGRAR	52°25'05.4"N	020°18'21.5"E	261.27° GEO (257° MAG) LOC IMDX	12.37 NM DME IMDX
REP GODIL	52°25'28.9"N	020°22'23.5"E	261.27° GEO (257° MAG) LOC IMDX	9.87 NM DME IMDX
FAP (FAF LOC-DME)	52°25'42.9"N	020°24'49.4"E	261.27° GEO (257° MAG) LOC IMDX	8.36 NM DME IMDX
MAP <sup>t</sup> LOC-DME	52°26'51.7"N	020°36'51.8"E	261.27° GEO (257° MAG) LOC IMDX	0.90 NM DME IMDX
Final approach descent angle: 3.00°				

