

# Courtney's Collectables

## Reborn Baby Doll Catalog

*Please read before deciding on a baby!*

*These are the baby kits that are available to me. What you see is not my work, but a model doll\*. This gives you an idea of what the finished doll will somewhat look like, and price estimation. Each baby comes completely blank, so they are fully customizable. I've included pictures of the blank heads, to better show the face shape and features. (Occasionally blank photos are unavailable.) If you would like to see more pictures of a particular baby, just ask and I'll send you some. Babies item names and sizes are listed ABOVE the picture. Prices and any special information on the doll are listed on the opposite side of the name (right side).*

*Hair and eye color are your choice. Other things like beauty marks, 'milk spots' and freckles can also be added. Most dolls are unisex, unless they come with an anatomically correct body, or one can be added for you. Other things like belly plates, hospital bands, pacifiers, umbilical cords and other accessories can be added as well. Price will most likely be the lowest listed, unless you choose different add-ons and options. There are always special sales going on, ask for which kits are on sale and the final price will be \$10-20 cheaper. At the back of the catalog, I will include some of the optional accessories and approximate prices for them as well. Each baby comes with a complimentary blanket and an outfit to start with\*\*. We can also work out payments/layaway, just ask.*

*Finished dolls **may or may not** look like the ones pictured. Each doll is one of a kind, and each artist does things differently. If you really like the look of a certain picture, I can try to make it as close as possible.*

*There are thousands of doll kits available in the world. I have listed ones that are the highest quality and greatest detailed for the best price. This makes your final price much lower and more affordable than the more expensive brands. You can request to see other dolls to choose from, but they will be over \$80-150 more.*

*Thank you for looking!*

*\*If I have made a doll before using the same kit, I will display the picture of my work as well as the model.*

*\*\*Some babies like minis or specialties will cost extra for dressing. Regular babies will come with an outfit, unless you would prefer a more expensive dress. You can also ask for a list of websites that sell clothes for reborns. Babies 16-18in will fit best in preemie. 18-21in is newborn. 22-24in will fit 0-3 months size. Sizes may vary by brand.*

*Any baby can be made a darker skin tone for \$20-50 more, depending on how much more paint has to be used. Some babies come in only darker skin tone, they will be marked BIRACIAL. These babies come darker, but still will require more paint for a darker shade.*

*Emma, mini baby 10in*



*\$70+ \*\*Since Realistic clothes fitting this doll are hard to find, I must charge to get an outfit for mini babies. Or if you choose to go without it, it would be only \$70. Belly plates, anatomically correct bodies, etc, cannot be used with mini babies due to being too small.*

*Byron, mini baby 10in*



*Same as Emma above ^*

*Claire, mini baby 10in*



*Same as Emma and Byron above ^*

Dakota, premature baby 15in



\$120+

\*my work:



Rosebud, premature 14½ in



\$120+

Caleb, premature 14in



\$120+

Maisie, premature 15in



\$120+

Tayla, 16in



\$130+

Megan 16in



\$120+

Taite, premature 16in



\$130+

considered a 'twin' to  
Teagan below

Teagan, premature 16in



\$130+

Teagan is like a twin to Taite, above^

They both have similar facial features,  
nose and cheeks. They would make a  
cute twin display. If purchased  
together I will offer a discount.



Drew 17in



\$130+

Anna, 17in



\$120+

Lainey, 18in



\$130+

Faith, 18in



\$120+

Nod 16in



*\$140+*

*Nod comes with a male OR female body. With an anatomically correct full vinyl body, instead of a cloth body. Available in the gender of your choice.*

Blinkin 16in



*\$145+*

*Blinkin comes with a male OR female body. With an anatomically correct full vinyl body, instead of a cloth body. Available in the gender of your choice.*

*Will offer a discount if both or different gender pairs of Blinkin and/or Nod are bought together as twins.*

Kaelin, 16in



\$125+

Kaelin is like a twin to Kadance below. They both have similar faces and feature an anatomically correct 'soft spot' on the head.

Kadance, 16in



\$130+

Kadance could be considered a twin to Kaelin above. They have the same noses, lips, eye and cheek shapes. They both have a 'soft spot' on their heads.

They look so sweet together as sisters.  
If Kaelin and Kadance are purchased together as a twin set, I will offer a discount.



Cricket (Fairy/Elf) 16in



\$160+\*\*

Cricket is a fairy or elf baby. She has pointed ears. \*\*Final price will include the costs of dressing, as this is a specially designed doll, which will require more expensive or handmade clothing and accessories.

Elsie, 18in



\$130+

Liam, 18in



\$120+



Sadie, 18in



\$120+



Lexi, 18in



\$120+



Bella, 18in



\$120+

Jewel, 18in



\$135+

Jewel has an anatomically correct 'soft spot' on her head.

Crystal, 18in



\$130+

Crystal has an anatomically correct 'soft spot' on her head.

Easton, 18in



\$120+

Elliot, 18in



\$145+

Grant, 18in



\$135+

Gemma, 19in



\$120+

Rose, 19in



\$120

Rose  
HBN Art Dolls

Biracial Shyann, 19in



\$145+

Shayann (caucasian) 19 in



\$130+

Moraan 19in



\$130+

Kimber 19in



\$135+

*Josie, 19in*



**\$125+**

*Josie and Joey are brother and sister. If purchased together, I will offer a discount.*



*Joey, 19in*



**\$135+**

*Josie's twin sister*



Dumplin, Punkin, Puddin and Muffin 18in

\$120-140 each,

or I will offer a discount for them together, in pairs, or as a triplet set.



Dumplin:



Puddin:



Punkin:



Muffin:



Molly, 19 in



\$120+

Kameko, 20in



\$135+

Hannah, 19in



\$130+

Spencer, 19in



\$120+

Tristan, 19in



\$130+

Kimi, 19in



\$130+

Blaze, 19in



\$130+

Robin, 20in



\$125+

Sam, 20in



\$125+

Sera, 20in



\$125+

Lucy, 20in



\$140+

Ember, 20in



\$125+

Tabatha, 20in



\$125+

Ben, 20in



\$125+



\*my work:



Savannah, 19in



\$135+

Violet, 19in



\$135+

*Savannah and Violet also have similar faces and would be offered with a discount if bought together.*



Biracial Aisha, 19in



\$140+

Sofie, 20in



\$125+

\*my work:



Avery, 20in



\$125+

Sydney, 20in



\$125+

Meg, 20in



\$140+

Camryn, 20in



\$135+

Kinsey, 20in



\$135+

(blank picture missing)

Quinton, 20in



\$130+

Kate, 20in



\$130+

Quinton and Kate would make a good twin display. They have similar facial structure and the same noses. If bought together, they will be discounted.



Sienna, 20in



\$125+

Ryan, 20in



\$130+

Precious Gift, 20in



\$130+

Paisley, 20in



\$135+

Jarome, 20in



\$125+

Juliet, 20in



\$130+

*Jarome and Juliet will be discounted if bought together.*



Gena, 20in



\$130+

Gabriel, 20in



\$135+

Discounts for these cute twins.



Londyn, 20in



\$125+

Chanel, 20in



\$130+



Candy, 20in



\$135+



Tory, 20in



\$135+

Trey, 20in



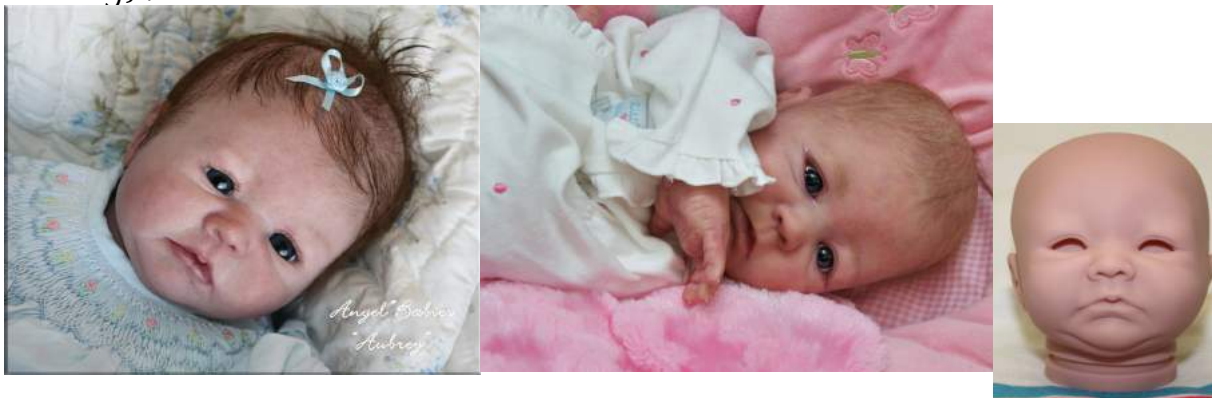
\$135+

Tanner, 20in



\$135+

Aubrey, 20in



\$145+

Lily, 20in



\$135+

Baulee, 21in



\$140+

Crystal, 21in



\$130+

Cutie, 21in



\$130+

Sugar, 20in



\$130+

Honey, 20in



\$135+

Sugar and Honey are cute twins and will give discounts for buying as a set.



Moby, 20in



\$130+

Raine, 20in



\$130+

Rina, 20in



\$130+

Irelyn, 20in



\$130+

Realborn Eliza, 20in



Most baby molds are sculpted by hand. Eliza was a real baby that, shortly after birth, was digitally scanned using a high-end process that is often used in movie production. Her body scan was converted into a mold for reborning use.

This process has never been done before, and this baby is the first of it's kind. A nearly complete replica of real life baby Eliza.

Biracial Brea, 21in



Amber, 21in



Tracy, 21in



\$140+



Sweetie, 21in



130+



*Tracy and Sweetie would make cute twins  
and I will offer discounts for buying  
as a set.*

Biracial Kyra, 21in



\$145+

Kyra (Caucasian), 21in



\$130+

Corbin, 21in



130+

Jaden, 21in



\$125+

Biracial Kaya, 21in



\$140+

Kaya (caucasian) 21in



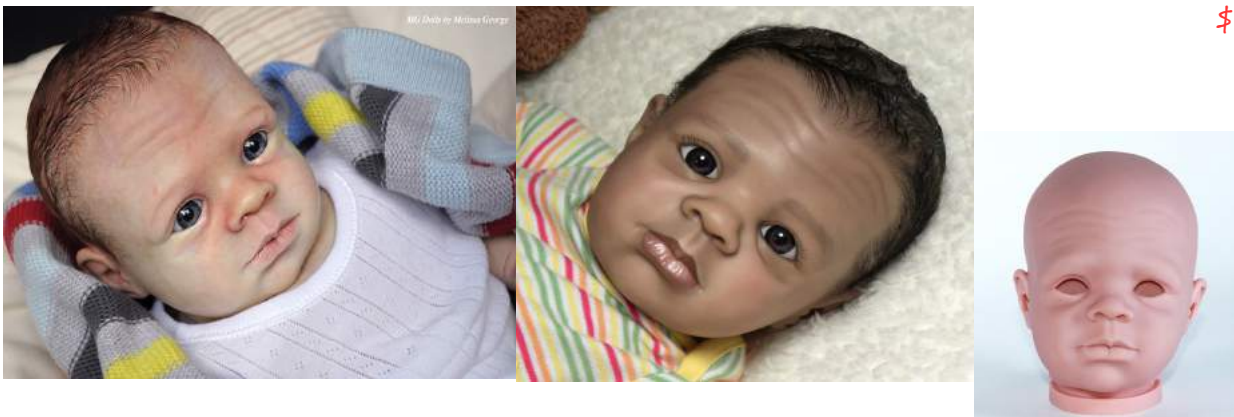
125+

Cozy, 21in



125+

Nikolas, 22in



\$130+

Scarlet 21in



\$130+

Riley, 22in



\$130+

Riley has more shoulder length on her arms, she can wear shorter sleeved clothing.

Chrisy, 22in



\$125+

Kendal, 22in



\$130+

Eden, 22in



\$130+

Jesse, 22in



\$135+

Kyle, 22in



\$125

Libby, 23in



\$125+

Lulu, 21in



\$130+

Holly, 22in



\$130+

Eliza, 22in



\$130+

Heather, 22in



\$125+

Fei Yen, 23in



\$130+

Cooper, 23in



\$130+

Cookie (9 months) 26in



\$155+

Sweet Pea Asleep, 23in

\$125+



Sweet Pea Awake 23in

\$130+



\*My work:



Rowan, 23in

\$130+



Cuddles (9 months old), 26in

\$155+



Ladybug (9 months old) 26in

\$155+



Cookie, (9 months) 26in



\$155+

Annie (9 months old) 26in



\$150+

Hailey (about 18 months) 28in



\$170+

Juan (about 18 months) 28in



\$175+

Tibby, 31in (can usually fit into 18 month size, or 24 depending on brand and size 4 or 5 shoes)



\$190+

Tibby and Taylor (below) come either sitting or can stand on their own. To stand up by themselves, the internal structure costs \$25 extra.

Taylor, 31 in



same as Tibby above^



## Add-ons

Front and back plates (not for very large babies)

\$15-30 each



Male or female fronts, boys come in circumcised or not. You can get just one, or a front and back. Even with both front and back plates, the cloth upper arms will still be exposed and will need to be covered by clothing or blankets when displayed (sometimes legs as well depending on brand). See pictures. Different plates will have different shapes, sizes and belly buttons, price depends on the brand you choose.

## Belly Plates

Large, medium and small belly plates \$10-20



## Internal Magnets

\$5-10



Magnets can make your baby look like its sucking on a pacifier, even if it has a closed mouth. Magnets can also be put in the hands and in a bottle or toy to make it look like your baby is holding it. Even a removable umbilical cord can be added if you have purchased a belly plate. (See umbilical cords on page 49)

## Beating heart \$5



This small heart goes inside your baby's chest. With just a gentle hug, you can feel little thumping like a real baby. Put your ear against it's chest to hear the tiny beats. Comes with batteries.

Voice Recorder \$4



Put this in your baby and make it even more realistic.  
Record your own cooing, sucking or crying to  
give your baby more realism.

Bottles of "milk" \$5



These bottles have closed nipples,  
so a special 'milk' can be added  
to it. Display with your baby,  
with no chance of mess.

Real Hospital Hats \$3



Most of my babies will come with a hat, but if you would prefer a real hospital  
hat for your display, these are available for you.

Real Hospital ID bracelets, complimentary if you request one. Available in pink, clear, blue, or teddy bear print.



Kleen-Print foot printer. \$5



This transfers your baby's footprint to a paper, like a 'birth certificate', scrap books, etc. It prints on almost any type of paper and no ink comes in contact with your doll.

Genuine Hospital blanket \$5



Used in hundreds of hospitals. Great if you are going for a 'straight from the hospital' look.

“Baby fat” pellets \$20-60 depending on size of baby

Gives baby bellies a soft, 'fat' feeling. They add a more realistic feel and weight than regular stuffing.



Factory made Baby Fat \$20-25



Only fits 16in to 21-22in babies. They are inserted into the tummy and bottom. They have a good, real feel to them, that can even be felt though diapers. Your baby will feel even more real in your arms.

Wings \$5-10



Make your baby a little angel with cute wings paired with a white dress.

*(Some people choose to have reborn babies done as a memorial, sometimes dressed as angels. Memorial dolls to honor a child are offered at a large discount.)*

*Baby Bubbles \$5-10*



*These little saliva bubbles can be added to corners of mouth or on the tongue, if you have an open mouth baby.*

*Umbilical cord \$10-15*



*A magnetic removable umbilical cord for use with a belly plate.*

*Earrings \$5-10 (bring your own for free)*



*You can pick your own earrings, or I'll give you some to choose from.*

*Price depends on how expensive the earrings you want are.*

*If you bring your own I will add them for free. Earrings are glued and a hole will be put in the vinyl.*

### Secrist dolls

These are another brand of dolls. They are more expensive, but I can still make them if you prefer. There are lots of different brands. I have listed the brands that are the cheapest and still highest quality for you. Ask if you would like to see other doll brands, but they may cost around \$100 more. These Secrist dolls are a little pricier than the ones above, but not as much as others. Some of these come with only 1/4 limbs. Those can only wear long sleeve and long pants or gowns. Prices are cheaper for shorter limbs.

Louise, 15in



\$140

Diana, 18in



\$140-160



\$160-170



Jody, 19in



\$160-170



Ming, 19in



\$165-170

Paddy, 19in



\$160-170



\$150-160



Rosie, 19in

\$160-170



Squeaky, 19in

\$160-170



Starling, 19in

\$165-170



Sweetie Pie, 19in



\$165-170

Acorn, 21in



\$170-180

Kelly, 21in



\$175-180

Ajalyn, 21in



\$175-185

Cutie Pie, 22in



\$175-170

Fern, 22in



\$170-185

Hayden, 22in



\$175-185

Hope, 22in



\$170-180

Nighty Nite, 22in



\$170-180

Oops, 22in



\$175-185

Petunia, 22in



\$175-185

Phoebe, 22in



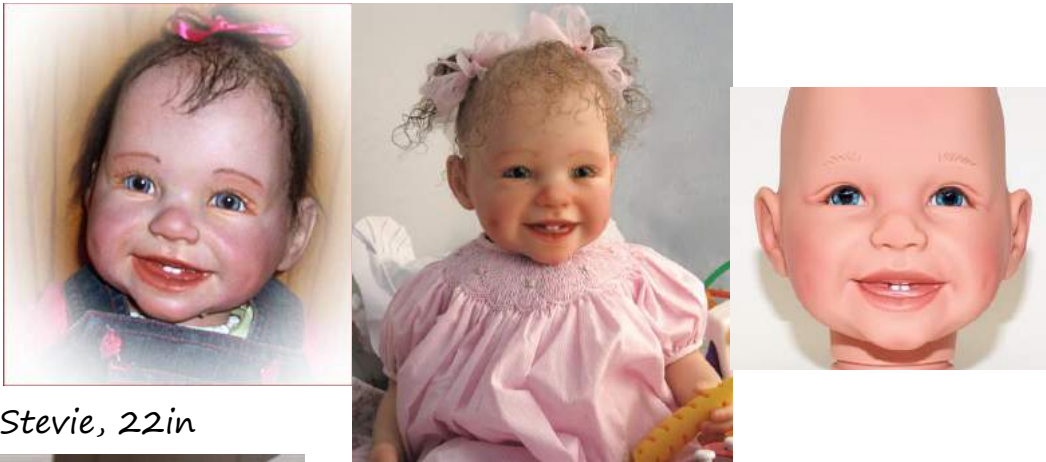
\$175-185

Raspberry, 22in



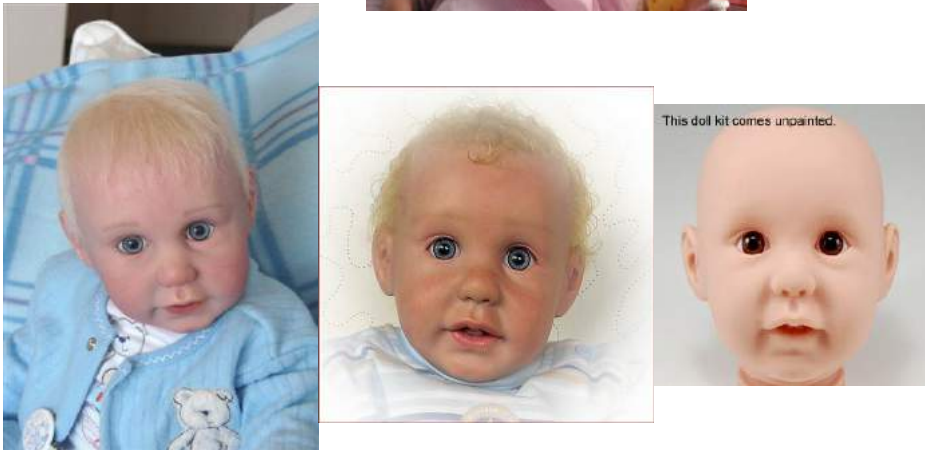
\$175-185

Silly Goose, 22in



\$175-185

Stevie, 22in



\$175-185

Teddy, 22in



\$170-180

Tika, 22in



*\$175-185*

*Tina, 22in*



*\$175-185*

*Micah or Stacy, 30in*



*\$190-200*

*Chris, 36in*



*\$230-250*

*There are ways to sculpt a baby to look the way you want, like one of your own*

children. Or a 'memorial doll' to look like a child (see page 47). These babies take more time, materials and money and would cost much more. I am not confident enough to start sculpting fully yet, but if we find a kit close enough to what you want, I can probably alter small details like lip or nose shapes. This way is easier for me, and cheaper for you.

Also, I can make 'play' dolls, for older children. More for gentle play, they are a little less delicate, but still beautiful. They are from good toy brands, like Berguener, that you can find in stores. These dolls are smaller and highly detailed with a more durable plastic, and only \$30-80+, depending on model style and if you would like hair. (see picture below, \$35 play doll)



If you already have a detailed doll like this, I'll paint for you for \$15. To add hair would be \$15-30.

*Thank you for looking, hope to hear from you soon.*