

# PACIFIC VILLAGE

PROJECT BY :-



# PACIFIC VILLAGE



Beauty lies in the eyes  
Of the beholder

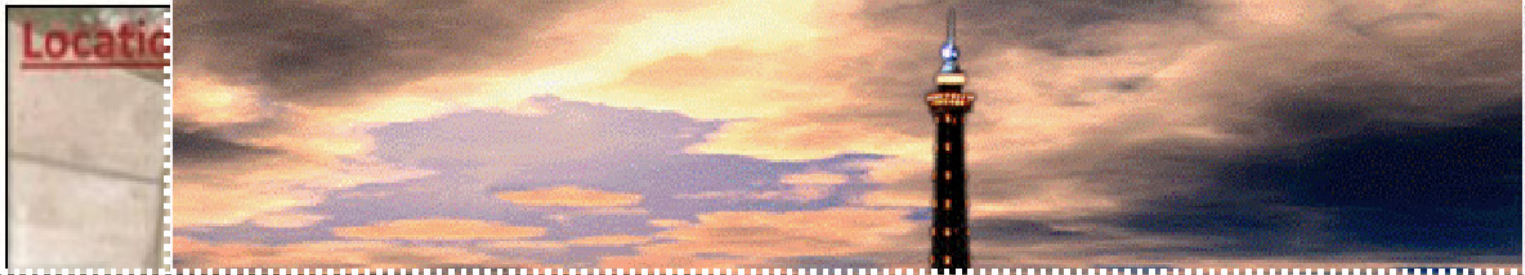
See for your self the allure  
Of these beautiful villa plots



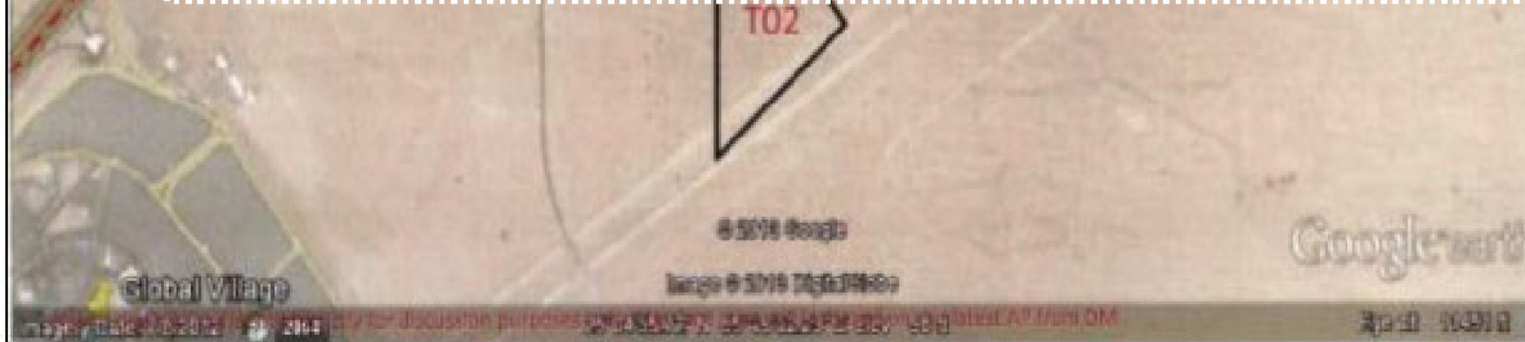
- 📍 On Emirates Road
- 📍 Plots of 3000sqft and 6000 sqft Available
- 📍 1<sup>st</sup> Time Plot Size Area are the same
- 📍 20 minutes drive to the choicest malls of the city
- 📍 Surrounded by Falcon City, the villa, City of Arabia Projects

**Best Opportunity to invest now**

# neighbors



Location





# PACIFIC VILLAGE MASTER PLAN



# VILLA TYPE

## 6BED ROOM 6670 SQ.FT



# TOWNHOUSE END UNIT 5BED ROOM 5061 SQ.FT



# TOWNHOUSE

## MIDDLE UNIT, 5BED ROOM

### 5032 SQ.FT



PACIFIC VILLAGE, DUBAILAND





Lowres for selection © Capital













*International Educational Facilities*



Toll Free:

**800ESTATE**

P.O. Box 450535

Tel: +971 4 323 3609

Fax: +971 4 323 3608

Email: [info@providentestate.com](mailto:info@providentestate.com)

Website: [www.providentestate.com](http://www.providentestate.com)