



## Earthquakes – are we really prepared?

GBU Photo



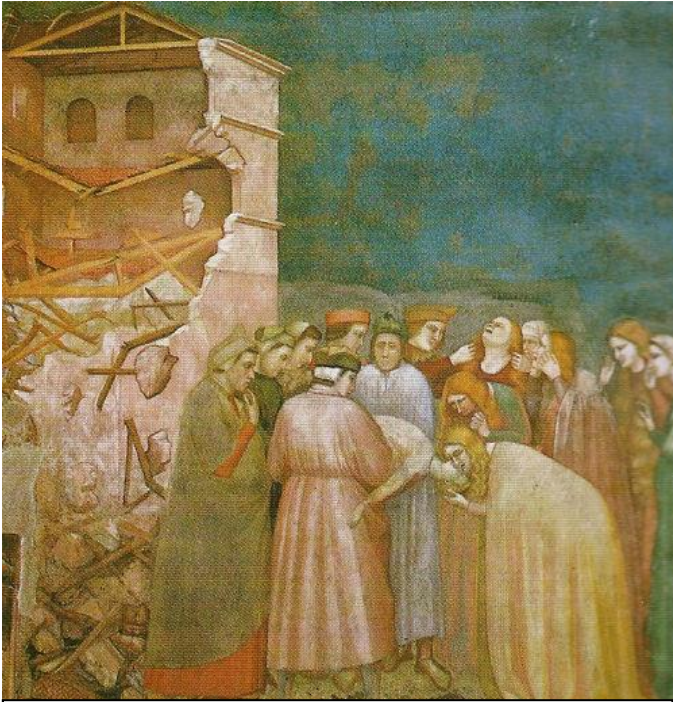
A variety of very recent earthquakes in Southern California and throughout the world should remind residents, businesses, and organizations of the risk we face in the Frazier Mountain Communities.

All hamlets and town throughout our area, from Three Points in the Western Antelope Valley, to Gorman, Lebec, Frazier Park, Lake of the Woods, Cuddy Valley, and Pine Mountain Club sit right on top of the world famous San Andreas Fault. The fault goes through the parking lot of the Frazier Park Post Office, all the way

through the little pond and the park, and straight through the golf course in Pine Mountain Club.

On Friday, March 28, a magnitude 5.1 earthquake, occurred near the City of La Habra, located at the border between Orange and Los Angeles County. The tremor was followed by more than 150 aftershocks over five days. The tremors were created by the little-known "Puente Hills thrust fault", discovered in 1999. The fault runs underneath thousands of buildings, bridges from the suburbs of northern Orange County through the San

Gabriel Valley underneath the skyscrapers of downtown Los Angeles and ends in Hollywood. Friday night's initial 5.1 quake was caused by the fault slipping for half a second underground, resulting in about 10 seconds of shaking at the surface.



12th century fresco by Italian artist *Giotto di Bondone* depicting the destruction of a church caused by an earthquake and the reanimation of a woman

On Tuesday, April 1, at least six people died when an 8.2 magnitude earthquake struck at 8:46 p.m. local time near the city of Iquique in Northern Chile. It was caused by a powerful shift in an undersea fault that runs along South America's Pacific Coast. The shaking caused landslides that blocked roads, power failed for thousands, an airport was damaged and several buildings caught fire.

On Thursday, April 3, around 10:00 a.m., a 3.1 Magnitude hit the Malibu area. The epicenter was right at the coast near Pacific Coast Highway. Minutes later a Magnitude 2.9 tremor struck about three miles west of the City of Fontana in San Bernardino County. Neither of the three quakes (La Habra, Fontana, Malibu) and aftershocks is believed to be on the same fault line.

However, the Frazier Mountain Communities and Bakersfield can easily keep up with risk of a severe earthquake in Southern Kern County. The villages of Lebec and Frazier Park are located right on top of the intersection of the largest faults in California, the San Andreas Fault and the Garlock Fault. Just "down the hill"

north-east of the Grapevine is the White Wolf Fault. The fault begins in the south part of the San Joaquin valley near the Laval Road exit on Interstate 5, then trends 34 miles to the northeast, passing near Arvin on the south side of Bakersfield, and ends at the mouth of Kern River Canyon.



Looking eastward from Gorman Post Road: San Andreas Fault to the right (south) of the road crossing the Aqueduct near Quail Lake and continuing along Three Point - Pine Canyon Road - Lake Hughes - Elizabeth Lake Road towards the southside of Palmdale

Subsequently, two of the by far largest tremors in California happened in our area, the magnitude 8.0 Tejon earthquake in 1857, and the magnitude 7.3 Kern County tremor in 1952.

#### 1952 Kern County Earthquake

The Kern County Earthquake hit on July 21, 1952 at 4:52 am with up to 4 feet of elevation change. It caused severe damage in Tehachapi and Bakersfield. Twelve lives were lost in the then sparsely populated area, and there was at least \$50 million in property damage. There were at least 20 aftershocks magnitude 5.0 or greater associated with the initial 7.3 magnitude shock, including a 5.8 magnitude tremor a month later on August 22.

According to the Los Angeles Times, the damage was concentrated in the town of Tehachapi where most of the town's buildings sustained damage; at least 11 were killed and 35 were injured. In Maricopa several buildings including the Maricopa Hotel, the justice court building, the post office, and several businesses were condemned because of heavy damage.

Downtown Bakersfield was heavily impacted by that earthquake and the many damaged buildings, including the County Courthouse, the St. Francis Church, and the



original Beale Memorial Clock Tower had to be either leveled or rebuilt.



The little (sag) pond in Frazier Park is part of the San Andreas Rift Zone and marks the course of the Fault

Major transportation routes were disrupted, severely hampering relief efforts. Landslides blocked the ridge route running between Los Angeles and Kern counties. California State Route 99 was also blocked by a landslide ten miles south of Gorman. Two tunnels used by the Southern Pacific Railroad and the Santa Fe Railroad collapsed between Tehachapi and Marcel.

#### 1857 Tejon Earthquake

The Tejon earthquake occurred on January 9, 1857 in central and Southern California with an estimated moment magnitude of 7.9. It ruptured the southern part of the San Andreas Fault for a length of about 225 miles (350 kilometers), between Parkfield in Monterey County and Wrightwood in San Bernardino County. The earthquake was the last large tremor along the southern portion of the San Andreas Fault. It is estimated to have had a maximum perceived intensity of IX (Violent) on the Modified Mercalli scale (MM) near Fort Tejon and along the area from Mill Potrero to Lake Hughes.

The average slip along the fault was 15 feet (5 meters), and a maximum offset of 30 feet (10 meters) was recorded in the Carrizo Plain area in southeastern San Luis Obispo County. With an estimated magnitude of 7.9, this was the last "Big One" in southern California. The extreme southernmost portion of the fault, which terminates near Bombay Beach at the Salton Sea, last ruptured in 1680.

Most of the buildings at Fort Tejon were badly damaged and several people were injured there. More structures were destroyed along a twenty-mile stretch between Fort Tejon and southeast to Elizabeth Lake, a sag pond that was formed directly on the San Andreas Fault. Streams and springs experienced disturbances in San Diego and

Santa Barbara, while the Kern, Lake, and Los Angeles rivers all spilled over their banks.

Farther north in Santa Clara County the flow of well water was affected. Ground cracks from liquefaction of swampy ground were observed in Los Angeles and near Oxnard, and ground fissures were reported near the Los Angeles, Santa Ana, and Santa Clara Rivers.



#### San Andreas Fault - Southern Segment

The southern segment (aka Mojave segment) begins at the Salton Sea near Bombay Beach, California. The fault then runs along the southern base of the San Bernardino Mountains, crosses through the Cajon Pass, and continues to run northwest along the northern base of the San Gabriel Mountains, along Lake Hughes Road.

After crossing through Gorman, the fault begins to bend westward. This area is referred to as the "Big Bend" and is thought to be where the fault locks up as the plates try to move past each other. This section of the fault has an earthquake-recurrence interval of roughly 140–160 years. West of Pine Mountain Club the fault continues again in a northwesterly direction, and runs through the Carrizo Plain.

The Pacific Plate moves northwards, the North American Plate moves southward. The Plates are separating at an average speed of 1.5 inch / year. As a result, Los Angeles City Hall is now 9 feet (3 meters) closer to San Francisco than when it was built in 1924.

Research has shown that the Southern segment, which stretches from the Salton Sea to Parkfield in Monterey County is capable of a Richter scale 8.1 magnitude earthquake. The extreme southernmost portion of the fault, which terminates near Bombay Beach at the Salton Sea, last ruptured in 1680.

An earthquake of Magnitude 7.5 or higher on the Southern segment (which, at its closest, is about 35 miles away from Downtown Los Angeles) would impact millions of people in Los Angeles, San Bernardino,

Riverside, and other areas, and may cause hundreds of billions of dollars in property and economic damage.



Parkfield, population 18, is located on top of the San Andreas Fault about 130 miles northwest of Frazier Park. Since at least 1857, Parkfield has had an earthquake of Magnitude 6 or greater on average of every 22 years (1857, 1881, 1901, 1922, 1934, 1966, and 2004). Parkfield is the most closely observed earthquake zone in the world. Scientists constantly measure the strain in rocks, heat flow, microseismicity, and geomagnetism in the area. In 2004, work began just north of Parkfield on the San Andreas Fault Observatory at Depth (SAFOD), by drilling a hole nearly 2.5 miles into the Earth's crust, across the San Andreas Fault.

#### Preparedness in the Frazier Mountain Communities

Obviously, the risk of severe consequences resulting from a major earthquake near the Frazier Mountain Communities are rather high. The question is whether we as a community are prepared to deal with the consequences of a disastrous earthquake.

What would you do if your loved one is seriously injured and needs immediate medical attention? Do you know where to go to find qualified medical help? Did we designate any place or location as a medical triage or staging area? Obviously we did not – therefore, qualified medical help will not be available in time.

Do you know where to go when communication systems (Phone, Internet, TV) are down and you are without electricity and running water? Did we designate any location as a gathering and exchange point for information, help, water, food? No, we obviously did not – therefore, we don't know where to go to receive (or provide) help or information.

One of the reasons for the lack of community preparedness, aside from the people's apathy, is certainly the lack of governmental authority and leadership in the unincorporated county areas. For comparison, Pine Mountain Club, a private Property Homeowner Association, appears much better organized and prepared in case of a major emergency. The residents of that rather isolated community know where to go to receive (or offer) help, the Clubhouse is basically their City Hall. They have a General Manager (comparable to a City Manager), an elected Board (comparable to a City Council), administrative staff, an Emergency Preparedness Committee, and even a well equipped CERT (Citizens Emergency Response Team).

The "local government" for the unincorporated areas (Frazier Park, Lebec, Lake of the Woods, etc.) is situated far away in Bakersfield. In case the next earthquake strikes during a business day between 9 a.m. and 5 p.m., and KCSO Sergeant Mark Brown is "on the hill", we certainly will have excellent crisis leadership. Our area is also blessed with a very proficient Paramedic units and two, or, if you count PMC as well, three Kern County fire stations with highly dedicated firefighters. However in a disaster caused by a major earthquake this crews will be overwhelmed with numerous rescues, fires caused by ruptured gas-lines, and dozens, if not hundreds, of people injured. Resources from the Kern County will not be available, since they will have to first respond to the needs in their own devastated communities. At the same time all main transportation routes in our area will highly probably be destroyed or buried by landslides. For example, Frazier Mountain Park road sits right in top of the San Andreas Fault, and the Fault crosses the Interstate 5 near Gorman, the Gorman Post Road and Highway 138 near Quail Lake. After been shaken for 30 seconds or longer the steep hill sides along the Interstate 5 between Fort Tejon and Grapevine will bury the I-5 under large amounts of soil and boulders.

At the same time, the Mountain Communities with their limited economic values are not a high priority for immediate response and recovery activities. Hospitals, high-occupancy buildings, etc. are the main concern for emergency responders. Restoring critical infrastructure, such as aqueducts, high power lines, etc. are of urgency for recovery crews. And, you have to face the reality, the hamlets further away from the I-5, including PMC, are not of the highest importance if resources for rescue and recovery are limited. Realistically, it may take days before those with serious injuries will be flown out to medical facilities, and a week or longer before manpower



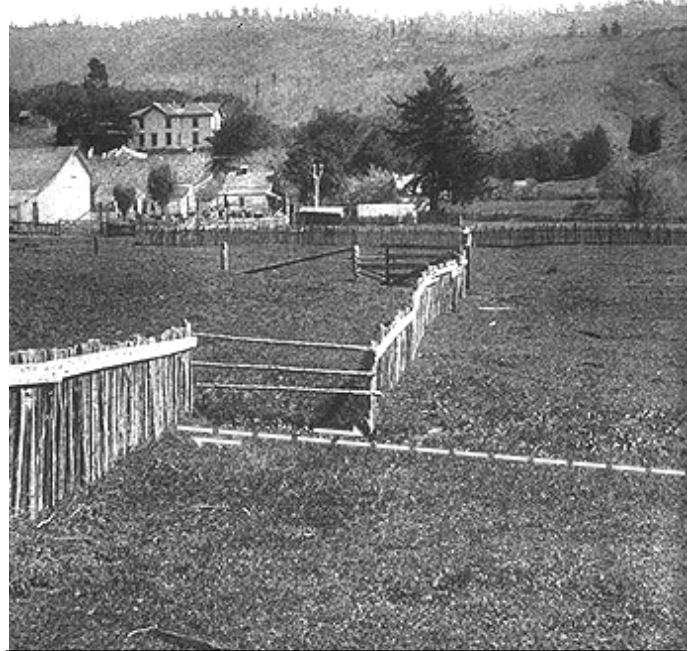
and equipment will be sent to the Frazier Mountain Communities.

In many countries the Red Cross, the Salvation Army, or other disaster relief organizations maintain stations in even the small communities to respond fast to those in need. Since many, if not all, of those charitable organizations in the U.S. are nowadays managed and organized following cost-effective and business principles, we rarely have Red Cross groups or facilities in rural communities. Everything has become centralized in the large cities, such as Bakersfield.

To survive the time before outside help from the State or National government arrives, communities and individuals need to prepare for the unimaginable. Our community has to have plan for

- where to receive and provide information and help (just as a thought:
  - for those in Lebec, the area around the Flying J with a variety of private facilities and open space may make an excellent gathering location,
  - for those in Frazier Park the Frazier Mountain Park with a variety of nearby public facilities as well as private businesses such as nearby pharmacy and grocery market may be an excellent gathering location, and
  - for those in Lake of the Woods and Lockwood Valley the Chuchupete Ranger station with a variety of manpower and equipment may be an excellent location to meet, gather or provide information, seek or provide medical or other help)
- how and where to receive or to provide medical assistance
- where and who provides shelter and comfort to those without water, food, or with other needs (in many parts of the world and in the U.S., religious organizations have take on these parts, but I have not seen any local church, temple, etc. getting active in shelter provisions);
- who provides leadership and decision-making. Assuming that Sergeant Mark Brown or another disaster-trained government officials are not available to provide Crisis Leadership, who will be in charge, providing Command and Control, and make the decisions until a functioning government authority has been re-established.

As an individual you can take some important steps to make your home safe and reduce the risk of injuries during an earthquake.



9 feet offset along the fault line in Point Reyes (30 miles north of San Francisco) after the 1906 Earthquake

#### Individual Preparedness

The following recommendations are taken from a list on the American Red Cross Website (<http://www.redcross.org/prepare/disaster/earthquake>):

- Become aware of fire evacuation and earthquake safety plans for all of the buildings you occupy regularly.
- Pick safe places in each room of your home, workplace and/or school. A safe place could be under a piece of furniture or against an interior wall away from windows, bookcases or tall furniture that could fall on you.
- Practice “drop, cover and hold on” in each safe place. If you do not have sturdy furniture to hold on to, sit on the floor next to an interior wall and cover your head and neck with your arms.
- Keep a flashlight and sturdy shoes by each person’s bed in case the earthquake strikes in the middle of the night.
- Make sure your home is securely anchored to its foundation.

- Bolt and brace water heaters and gas appliances to wall studs.
- Bolt bookcases, china cabinets and other tall furniture to wall studs.
- Hang heavy items, such as pictures and mirrors, away from beds, couches and anywhere people sleep or sit.
- Brace overhead light fixtures.
- Install strong latches or bolts on cabinets. Large or heavy items should be closest to the floor.
- Learn how to shut off the gas valves in your home and keep a wrench handy for that purpose.
- Learn about your area's seismic building standards and land use codes before you begin new construction.
- Keep and maintain an emergency supplies kit in an easy-to-access location.

#### Disaster Supply Kit

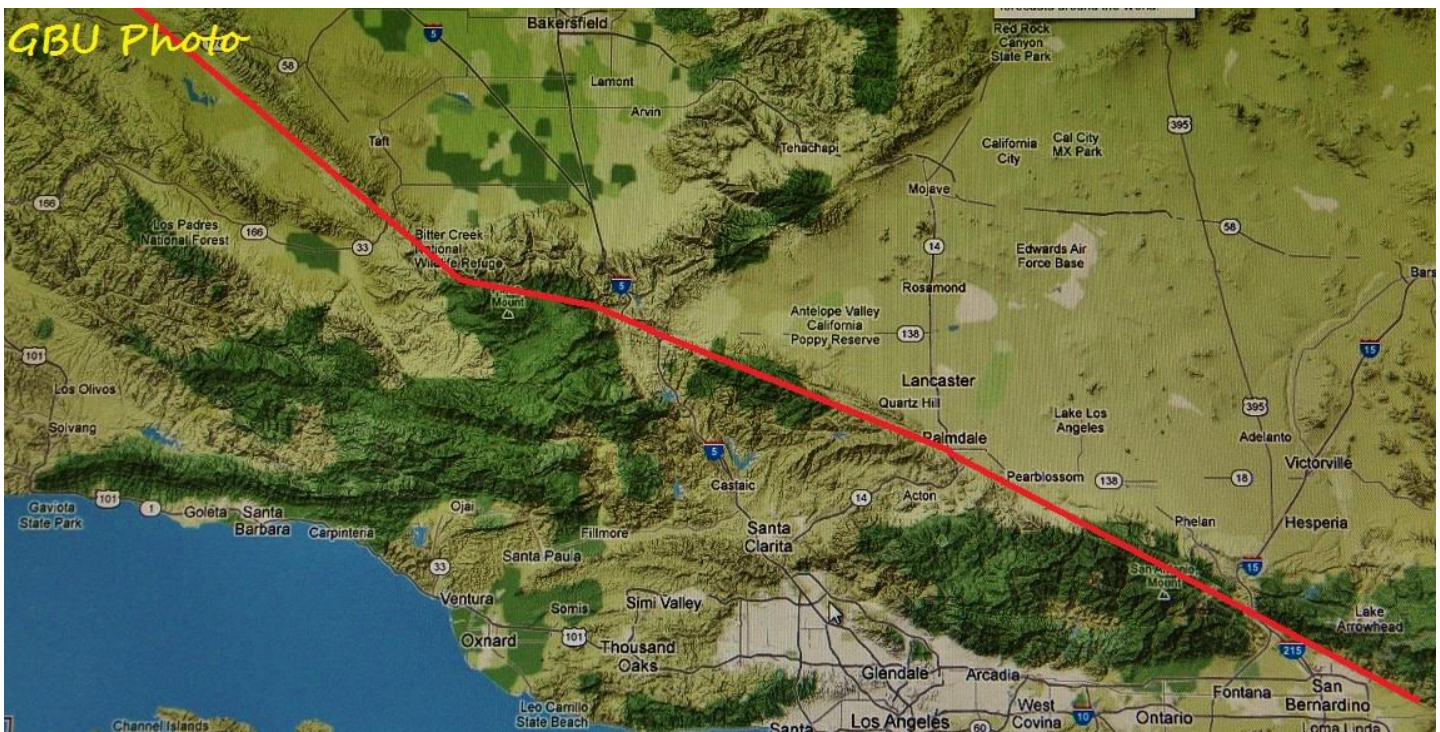
Each Household should have a designated Disaster Supply Kit that provides essential supplies, such as water (in small bottles); some light-weight food such as energy bars; a first-aid kit and some pain pills; a tarp and a blanket; some clothing; a crank-operated radio, flashlight, mobile phone charger; a pair of work gloves and some dust masks; toilet paper, soap and other hygiene articles; tools such as a swiss army knife and a

can-opener. A generic emergency kit can be bought at many hardware stores, such as Home depot, or Lowes. However it is recommended that you build your own kit(s) based on the individual needs of yourself and your family; for example if you have a baby, diapers are a must.

#### Prediction - Forecasting - Warning

Each year more than 13,000 earthquakes with a magnitude of 4.0 or greater occur around the globe. On average there is one quake with a magnitude 8.0 or greater every year, about 15 major quakes with Magnitude 7 – 7.9, 134 large quakes with a magnitude 6 – 6.9, 1,300 moderate quakes with a magnitude 5 – 5.9, and 13,000 tremblors with a magnitude of 4 – 4.9.

Earthquake Prediction is defined as the specification of the time, location, and magnitude of a future earthquake within in a certain region; earthquake forecasting is the probabilistic assessment of an earthquake occurrence, including the frequency and magnitude in a given area over a periods of years or even decades. A real-time earthquake warning systems is somewhat different. Such systems, which already exist in Japan and Mexico, are based on the detection of a severe earthquake, and can provide from a few seconds to up to a minute of warning time to neighboring regions.



Path of the San Andreas Fault from San Bernardino to the northern part of the Carrizo Plain



# Earthquake Meeting

**Next Sunday, April 6**

**from 6:00 p.m. to 7:30 p.m.**

**at the La Sierra Restaurant in Frazier Park, 3500 Mt Pinos Way**

After some strong earthquakes in the Los Angeles area at the end of March, reaching magnitudes of 5.1 and followed by nearly hundred aftershocks, questions about earthquake safety and survival became apparent for residents, businesses, and homeowners in the Frazier Mountain Communities.

Each town, Gorman, Lebec, Frazier Park, Lake of the Woods, Pinon Pines, Cuddy Valley, and Pine Mountain Club sits right on top of the famous San Andreas Fault.

In addition, the two largest Fault systems in California, the Garlock Fault and the San Andreas Fault, meet right between Lebec and Frazier Park.

The following questions will be discussed:

- **What happened in past earthquakes in our region?**
- **When will the next large earthquake strike our area?**
- **What will be the impacts of a large earthquake?**
- **Why are most towns in the Frazier Mountain Community not prepared for a major disaster?**
- **What can I do to protect myself and my family?**
- **Who is likely to survive a major earthquake?**

*Gunnar J Kuepper, the past President of the South-western section of the International Association of Emergency Managers, and former Director with the California Emergency Services Association will explain the risk of earthquakes and the vulnerability of people in our area. He will make suggestions on how to become better prepared as a community, and how to survive a large tremor.*

**Admission is \$15/person, \$5 for teens under the age of eighteen, no charge for children under 12**

**Please make reservations via [GBUmountainNEWS@gmail.com](mailto:GBUmountainNEWS@gmail.com) or 661-402-2717, or just show up on Sunday, April 6 before 6:00 p.m. at the La Sierra Restaurant in Frazier Park.**

## Content

- Earthquakes – Are we really prepared by *Gunnar J Kuepper*
- California Reservoir Conditions on March 19, 2014
- News from the El Tejon Unified School District
  - 2<sup>nd</sup> Saturday of School
  - Chess Tournament
  - What's for Lunch?
- Frazier Mountain High School
  - Sports
    - Baseball & Softball Schedule by *Jerry Quick*
- El Tejon School
  - Family Fun at El Tejon School PTSO's Fundraiser by *Michelle Moser*
- Frazier Park School
- Peak to Peak Mountain Charter School
- Gorman School
- All Things Local
  - Mommy & Me Calendar
  - Second Installment of Real Property Taxes Due April 10, 2014
- All Things Regional
  - Assemblymember Salas Hosts Financial Literacy Workshop
  - April is National Safe Digging Month, SoCalGas Says 'Know What's Below,' Call 811 Before You Dig
- All Things Global
- People
- Law Enforcement Corner
  - Kern County Sheriff's Office – Frazier Park
  - Los Angeles Sheriff's Department
  - California Highway Patrol
    - Distracted Driving
- Animals Matter
- Our Library
  - Calendar
  - Journalism Class for Beginners - a joint effort of the Frazier Park Library and the GBU Mountain News
- Incidents & Accidents in our Region
  - Homicides, Arrests, Traffic Accidents, Fires & Rescues throughout Kern County
- Arts – Music – Theatre
- Business Affairs
- Teens
  - McCarthy Announces Annual High School Art Competition
- Nature, Science & Technology
- Weather
  - Frazier Park Weather Forecast
  - Impressions from Wednesday's Storm in the Frazier Mountain Communities
- Kern County
  - Board of Supervisors Meetings
  - History of Kern County (Part 1)
- Upcoming Events
- Safety & Disaster Preparedness
  - Six P's for immediate evacuation
  - Kern County Fire Hazard Reduction Requirements
- Legislative Affairs
  - A Look Ahead - Policy Committee Summary Report - By California Senate Republican Office of Policy
- Where to Go – What to Do
- Op-Ed
- Health & Fitness
- Business Directory
- Classifieds
- Job Offers
- Important Phone Numbers

GBU Mountain News is now on Facebook:

<https://www.facebook.com/pages/GBU-Mountain-News/1400308640212535>

See what's happening in the Frazier Mountain Communities



## High Quality Dog Grooming

Linda Robredo  
Owner/Groomer

**661-245-3635**

Call Linda Today  
to Schedule an Appointment.

Bring this ad for  
**\$5.00 OFF**  
your next grooming!



**Blue Rose Pet Salon**

- All Breed Grooming
- Full Service
- High Quality Products

Serving the Mountain Communities  
Since 2004

2014

# CLUB LIFE

## TEENS OWN THE NIGHT AT THE CLUB

### TEEN NIGHT EVENTS AND FIELD TRIPS

**APRIL 11 - EGG-STROORDINARY GLOW IN THE DARK  
EASTER EGG HUNT**

**May 23 - Total Tiki Luau**

**June 18 - Six Flags Magic Mountain \***

**JUNE 27 - GAME SHOW NIGHT**

**July 18 - The Amazing Race - Scavenger Hunt**

**JULY 23 SANTA MONICA PIER \***

Teens, ages 13-18 are all welcome!  
For more information on these teen nights, or the teen program please contact the Boys & Girls Club at (661)245-3139, or stop by and see us at Frazier Park School between 3:30-6:00pm M-F

All events are 7-9pm at Frazier Park School, Room 13

Any event marked with a \* are TBA and will be announced when we get closer to the event date.

Check us out on Facebook  
 [www.facebook.com/boysandgirlsclubsofkerncountyfraziermountainclub](http://www.facebook.com/boysandgirlsclubsofkerncountyfraziermountainclub)



## News from the El Tejon Unified School District (ETUSD)

### 2<sup>nd</sup>. Saturday of School

On March 29, the El Tejon Unified School District (ETUSD) held its second Saturday School at the Frazier Mountain High School (FMHS). About 200 students from grades 3-8 go attended the half-day program and enjoyed Agriculture, Science, Arts, Computer, Chess, classes and a variety of other educational presentations as well as sports activities.



Many students obviously enjoyed Saturday's School program

The FFA/Agriculture Center under the supervision of Teacher *Christina Pennella* saw many of these students in their section. The students were introduced to Agriculture education and the FFA (Future Farmers of America) program, got a chance to be hands-on at the grapevine planting area, then came back to the classroom for team building games and activities. The High School had a dozen students acting as hosts and mentors to the younger students.

It is noteworthy that all teachers and other school staff volunteered their time and talent. Seen this Saturday were ETUSD Superintendent *Rodney Wallace*, School Board member and sports enthusiast *Vicki Mullen*, FMHS Principal *Sara Haflich*, El Tejon Middle School Principal *Rosalie G Jimenez*, Teachers *Yvette Heasley*, *Chuck Mullen*, *Michelle Penner*, *Monika Darling*, *William Shillig*, and many more.

The first Saturday School on March 22 was attended by about 300 students, generating about \$9,000 in ADA

(Average Daily Attendance) money from the state's education fund.



Certainly a crowd at the sign-in for Saturday School on March 22 (Photo by *Alli Berry*)



Frazier Park Elementary School Students enjoy the makeshift playground in the FMHS Lobby

### Chess Tournament

By *Chuck Mullen*

On **Saturday, April 5th**, there will be a ETUSD Chess Championship at FMHS' Saturday School. Orientation and skittles will be from 8:00-9:00 with the games ending at 11:45.

The 5 categories are:

- K-4
- 5-6
- 7-8
- 9-12
- and overall District Champion!

All players must have a good facility with how the pieces move and be on time for the event. While there will be no spectators allowed in the playing room(s), we hope to broadcast the top three boards simultaneously so folks



can watch from either home, their laptop, or even Botswana. Players that are camera shy or without internet clearance will have to pass on this event.

### What's for Lunch?

See the April 2014 Lunch Menus for the Frazier Park Elementary, El Tejon Middle, and Frazier Mountain High Schools at <https://www.facebook.com/pages/GBU-Mountain-News/1400308640212535>



## Frazier Mountain High School (FMHS)

### Sports

#### Schedule

Info provided by *Jerry Quick*

#### Varsity Softball

- Friday, April 4th Home vs. KV at 3:15pm
- Tuesday, April 8th Home vs. Alpaugh at 3:15pm
- Friday, April 11th Home vs. Desert at 3:15pm
- Tuesday, April 22nd Home vs Bishop at 3:15pm
- Friday, April 25th @ Bishop at 3:15pm
- Tuesday, April 29th @ Rosamond at 3:15pm
- Friday, May 2nd Home vs Rosamond at 3:15pm
- Tuesday, May 6th Home vs Cal City at 3:15pm-no JV baseball or softball
- Friday, May 8th @ Cal City at 3:15pm-No JV baseball or softball

#### Varsity Baseball

- Friday, April 4th Home vs. KV at 3:15pm
- Tuesday, April 8th -BYE
- Friday, April 11th Home vs. Desert at 3:15pm
- Tuesday, April 22nd Home vs Bishop at 3:15pm
- Friday, April 25th @ Bishop at 3:15pm
- Tuesday, April 29th @ Rosamond at 3:15pm
- Friday, May 2nd Home vs Rosamond at 3:15pm
- Tuesday, May 6th Home vs Cal City at 3:15pm (No JV)
- Friday, May 8th @ Cal City at 3:15pm (No JV)

#### Junior Varsity Softball

- Friday, April 4th vs. KV at 3:15pm
- Tuesday, April 8th -BYE
- Friday, April 11th vs. Desert at 3:15pm
- Tuesday, April 22nd vs Bishop at 3:15pm
- Friday, April 25th @ Bishop at 3:15pm
- Tuesday, April 29th @ Rosamond at 3:15pm

- Friday, May 2nd vs Rosamond at 3:15pm

### El Tejon Middle School

### Family Fun at El Tejon School PTSO's Fundraiser

Info & photos provided by *Michelle Moser*



On Friday, March 28, about 25 students took on 13 parents for a Basketball Game to raise funds for the El Tejon Middle School PTSO (Parent Teacher School Organization). As to be expected, and witnessed by more than thirty spectators, the teens took the win 43-40. The entire team of students charged the court for the last 30 seconds of the game. The student players were all from El Tejon School, grades 5-8. Some high students were kind enough to lent a hand serving food, collecting entry fees, coaching and keeping score.

The parent's team included: *Sara and Eddie Haflich, Michelle Moser, Jenifer Abell, Mary Hon, Allan Edwards, Armida Calderon, Chris Deatricks, Michelle Penner, Matt Vivirito, and Gary Matte.*

Students who played included *Katie Moser, Stori Haflich, Maria and Andrea Calderon, Zoe Watson, Emily and Sarah Hon, Willow Johnson, Emma Abell, Mattaniah Matte, Alex Penner, Knight Jarecki, Miles and Sedona Vivirito.*

The entire PTSO Board, President *Jenifer Abell*, Vice President *Pamela Jarecki*, Secretary *Michelle Moser*, and Treasurer *Tiffany Matte* attended the event.

PTSO would like to thank everyone who played, cheered and volunteered their time!

Special thanks to *Chuck Mullen* for being our announcer for the evening, *Stevie Aguado* for running the score board, School Board Member *Vicki Mullen* and her daughter *Michelle* for coaching the players, *Charles Stewart* and Superintendent *Rod Wallace* for officiating the event - all though some of their calls may have been bias for the kids! Everyone had a great time. The PTSO raised about \$500 for the night, including \$100 donation from School board member *Scott Robinson*.

## ETUSD

Your Bobcats, Badgers, and Falcons  
need your support!

Frazier Park Elementary, El Tejon Middle, Frazier Mountain High



A Good Place to Grow

Falcon Pride



Home of the Badgers!!

**JOIN ETUSD'S TEACHERS AND ADMINISTRATION  
IN HELPING TO SAVE PROGRAMS FOR ALL OF  
OUR STUDENTS!!**

*ETUSD is planning a series of Fun filled Saturday's full of enrichment activities and sports clinics for all ages in order to help gain back funds lost by absences. ETUSD will receive ADA funds for all students who attend these events.*

**Date:** Saturday **April 5**

**Time:** 8:00 A.M. — 12:00 P.M.

**Where:** Frazier Mountain High School

- Basketball Workshop  
Grades: K-8
- Chess
- Art Enrichment
- Knitting
- Basic Mixed Martial  
Arts (high school)
- Technology Activities
- Much

Much  
More

All kids at all ages in ETUSD are welcome!!

Helping to support our kids

Again this Saturday April 5





## All Things Local



## Mommy & Me Calendar

Info provided by *Amy Crippen*, Family Resource Center

- Wednesday, April 9, 10-12: Meet at the Park - Easter Eggs, Bring your hard boiled eggs so we can dye them
- Wednesday, April 16: Mom's Day - Mom's decide what the activity will be and plan it all, (craft and snack)
- Wednesday, April 23: CALM Zoo Bakersfield - Meeting at 10:00am at CALM 10500 Alfred Harrell Hwy, Bksfd, 93306. Admission will be paid for children 5 and under and 1 parent. We encourage you to carpool & bring a lunch or snacks for you & your child.
- Wednesday, April 30, 10-12: Meet at the Park - Planting Party, We will make our own Herb garden. Let's celebrate Spring!

####

## Second Installment of Real Property Taxes Due April 10, 2014

Kern County Treasurer and Tax Collector, Jackie Denney reminds the public that the second installment of your Kern County property tax is delinquent if not paid by **5:00 p.m., Thursday, April 10, 2014**. In order to avoid a 10% late penalty and a \$10.00 delinquency fee, property tax payments must be made in person or postmarked on or before April 10, 2014.

Various methods of payment are available:

- 1) Via mail to: KCTTC Payment Center, P.O. Box 541004, Los Angeles, CA 90054-1004

- 2) In person at the Treasurer-Tax Collector's Office located at 1115 Truxtun Avenue - 2nd Floor, Bakersfield, CA 93301.

- 3) Via the Treasurer-Tax Collector's website at [www.kcttc.co.kern.ca.us](http://www.kcttc.co.kern.ca.us)

Visa, Mastercard, American Express or Discover Cards can be used for payments made over the Internet or in person. Electronic Checks can also be used for payments over the Internet. Please access our website for additional information.

If you do not have your tax bill, you may request a substitute tax bill or you may obtain the amount of property tax due by calling (661) 868-3490 or by emailing [2servu@co.kern.ca.us](mailto:2servu@co.kern.ca.us). Property tax and parcel information are also available on our website.

####

## Frazier Park Public Utility District (FPPUD)

As usual the Frazier Park Public Utility District invites everyone to the Board Meetings to keep you informed. The next scheduled meeting is **April 10th, 2014 at 6:00 p.m.** We are also having a very important Townhall Meeting on the 17th at the parks recreation hall. Hope to see you there!

###

## Bakersfield Vet Center

by *Anne Burnaugh*, Mntn Comties Family Resource Cntr

A new face has arrived to assist the local veterans and their families with counseling services at the Mountain Communities Family Resource Center (MCFRC). Joe Drullard is from the Bakersfield Vet Center and is in our office every 4<sup>th</sup> from 9:00 a.m. – 2:00 p.m.

While in the Army from 1999-2009, Joe served with the 3<sup>rd</sup> Special Forces Group (Airborne) and his deployments were in Iraq and Afghanistan. He specializes in outdoor wilderness therapy and looks forward to meeting our local veterans.

The Bakersfield Vet Center provides counseling services and is located next to the Kern County Veteran Services Department which provides veteran benefits and other services.

The Bakersfield Vet Center program was established in 1979 to assist veterans who were experiencing readjustment problems. Today, the goal of the Bakersfield Vet Center program is to provide a broad range of counseling, outreach, and referral services to eligible veterans and their families. The Vet Center provides counseling

services for individuals, groups, family members, marital counseling, PTSD services, and bereavement counseling. The Bakersfield Vet Center also provides medical referrals, assistance in applying for VA benefits, employment and career counseling, alcohol/drug assessments, community education, and other information and referral services. Eligible veterans include those who served in Vietnam, Lebanon, Grenada, Panama, the Persian Gulf War, Somalia, Kosovo/Bosnia, WWII, Korean Combat Vets, Operation Enduring Freedom (OEF), Operation Iraq Freedom (OIF), and Global War on Terrorism (GWOT). The Bakersfield Vet Center services are extended to surviving parents, spouses, children, and siblings of service members who died of any cause while on active duty, to include federally activated Reserve and National Guard personnel. These services are provided at no cost to the veteran or family.

If you or anyone you know would like more information regarding the counseling services the Bakersfield Vet Center program provides or would like to make an appointment with Joe Drullard, please call (661) 323-8387 or 8388. Bakersfield Vet Center Brochures are also #####

## **All Things Regional**

### **Assemblymember Salas Hosts Financial Literacy Workshop**

Assemblymember *Rudy Salas* (D-Bakersfield) will host a free Financial Literacy Workshop in partnership with State Farm. At this event, attendees can have their questions answered by financial experts and learn the basics of financial management, including: maintaining good credit, saving, buying a first home, and family budgeting.

WHO: Assemblymember Rudy Salas, State Farm

WHAT: Financial Literacy Workshops

WHEN & WHERE:

**Friday, April 4, 2014 at 2:00 p.m.**

Shafter Veterans Hall

309 California Ave.

Shafter, CA 93280

For more information, or to RSVP, please visit [www.asmdc.org/salas](http://www.asmdc.org/salas) or call (661) 335-0302.

##

*Assemblymember Salas represents part of the City of Bakersfield, the cities of Arvin, Avenal, Corcoran, Delano, Hanford, Lemoore, McFarland, Shafter, Wasco, and the communities of Armona, Buttonwillow, Home*

*Garden, Kettleman City, Lamont, Lost Hills, Stratford and Weedpatch.*

####

### **April is National Safe Digging Month, SoCalGas Says ‘Know What’s Below,’ Call 811 Before You Dig**

*By Southern California Gas Co. (SoCalGas)*

LOS ANGELES, April 1, 2014 – April is National Safe Digging Month and Southern California Gas Co. (SoCalGas) is reminding residents and businesses to call 811 to have utility-owned lines marked before digging in the garden or at construction sites.

Calling 811 or Underground Service Alert will help avoid possible injury or damage to hidden gas lines or service interruption.

A utility line is damaged by digging once every three minutes nationwide, and many of these incidents are caused by failure of the professional excavator or homeowner to call 811 before beginning their digging project. Even if relatively minor projects are involved, such as putting up a new wall or fence, building a deck, planting or removing large trees or any other renovations, the digging necessary for these projects can result in hitting gas lines if they aren’t located prior to the work.

“Since gas lines that serve homes and businesses are located underground and out of sight, residents and business owners won’t know where they are located. We urge everyone – whether digging at their businesses or homes -- to make the quick 811 phone call to Underground Service Alert to have utility-owned lines marked for free,” said Rick Morrow, senior vice president of gas operations and system integrity for SoCalGas.

Last year, there were more than 2,400 “dig-ins” to SoCalGas pipelines which the utility hopes will decrease this year through increased public awareness.

Before digging in their yard, place of business or the street, residents and business owners should mark the proposed excavation area, and call 811 to reach Underground Service Alert at least two business days before the project is to begin. Underground Service Alert is free and they will contact SoCalGas and other area utilities. Each utility will then locate and mark the underground lines, pipes and cables they own.

SoCalGas-owned pipelines typically extend from the gas main, in front or behind the home or business, to the gas meter. Customer-owned gas pipes are the lines that run



from the gas meter to the building or area where gas-fueled equipment or appliances are located, such as barbecues, fire pits or spa equipment. SoCalGas does not mark these customer-owned lines. To have customer-owned lines located and marked before a project, SoCalGas advises its customers to call pipe and leak locating service companies or licensed plumbing contractors who provide these services.

Once all lines are marked, excavators should carefully use only hand-digging tools within two feet on each side of marked gas lines.

No damage to gas lines is too small to report. Even a slight gouge, scrape or dent to a pipeline or coating may cause a dangerous break or leak in the future. If a customer causes what seems to be only minor damage to a pipeline or a component attached to a pipeline, they should call SoCalGas immediately at 1-800-427-2200.

###

*Southern California Gas Co. (SoCalGas) has been delivering clean, safe and reliable natural gas to its customers for more than 140 years. It is the nation's largest natural gas distribution utility, providing service to 20.9 million consumers connected through nearly 5.8 million meters in more than 500 communities. The company's service territory encompasses approximately 20,000 square miles throughout central and Southern California, from Visalia to the Mexican border. SoCalGas is a regulated subsidiary of Sempra Energy (NYSE: SRE).*





Dear Frazier Park Residences,

Due to the recent Proclamation of a State Emergency by Gov. Jerry Brown pertaining to the prolonged drought your Frazier Park Public Utility District (FPPUD) has implemented a Water Conservation Plan (available for review in the district office as well as an electronic copy emailed to you upon request). It consists of four parts.

- A) The voluntary Conservation Measures (that we ask everyone to abide by year round) and three stages of drought response which are
- B) Warning Stage,
- C) Alert Stage, and
- D) Emergency Stage.

At present, while we evaluate our water supply and the drought, we are at Voluntary Conservation Measures.

In an effort to promote conservation and voluntarily conserve water, Frazier Park PUD is adopting water-use regulations to promote water conservation during **non-emergency** situations. These regulations include the following non-essential water use and are currently voluntary unless specifically noted:

- 1) No use of water through any connection when the district has notified the customer in writing to repair a broken or defective plumbing, sprinkler, watering or irrigation system and the customer has failed to make such repairs within 5 days after receipt of such notice.
- 2) No use of water which results in flooding or run-off in gutters, waterways, patios, driveway, or streets.
- 3) Use of water for washing aircraft, cars, buses, boats, trailers or other vehicles without a positive shut-off nozzle on the outlet end of the hose.
- 4) Use of water through a hose for washing buildings, structures, sidewalks, walkways, driveways, patios, parking lots, tennis courts, or other hard-surfaced areas in a manner which results in excessive run-off or waste.
- 5) Use of water for watering streets with trucks, except for initial wash-down for construction purposes (if street sweeping is not feasible), or to protect the health and safety of the public.
- 6) Use of water for construction purposes, such as consolidation of backfill, dust control, or other uses unless no other source of water or other method can be used.
- 7) Use of water for more than minimal landscaping in connection with any new construction.
- 8) Recommend the use of water for outside plants, lawn, landscape, and turf areas on a Odd/Even Program (Odd numbered addresses Tuesday, Thursday, & Saturday. Even numbered addresses Wednesday, Friday, & Sunday). Watering of plants, lawn, landscape, and turf areas are prohibited between the hours of 10 a.m. and 6 p.m. Recommend no watering of plants, lawn, landscape, and turf areas allowed on Mondays.
- 9) Use of water for watering outside plants and turf areas using a hand-held hose without a positive shut-off valve.
- 10) Use of water for decorative fountains or the filling or topping off of decorative lakes or ponds. Exceptions are made for those decorative fountains, lakes, or ponds which utilize recycled water.
- 11) Use of water for the filling or refilling of swimming pools.

**For valuable information on conserving water we recommend that you visit [saveourh2o.org](http://saveourh2o.org)**



## All Things Global People

# Law Enforcement Corner

## Los Angeles County Sheriff (LASD)

### California Highway Patrol (CHP)

#### Distracted Driver Awareness Month

April is National Distracted Driver Awareness Month. The California Highway Patrol, California Office of Traffic Safety, and Allied Law Enforcement Agencies are launching the fourth annual Distracted Driver Enforcement and Awareness Campaign. This is a month long effort targeting distracted drivers as well as bringing awareness to the public of the deadly consequences of driving while distracted.

#### Distracted Driving

Distracted driving is any activity that could divert a driver's attention away from the primary task of driving.

Types of distractions include:

- Texting
- Using a cell phone or smartphone
- Eating and drinking
- Talking to passengers
- Grooming
- Reading, including maps
- Using a navigation system
- Watching a video
- Adjusting a radio, CD player, or MP3 player

The number of people killed in distraction-affected crashes was 3,360 in 2011 and 3,328 in 2012. An estimated 421,000 people were injured in motor vehicle crashes involving a distracted driver in 2012, up from the estimated 387,000 people injured in 2011.

10% of all drivers under the age of 20 involved in fatal crashes were reported as distracted at the time of the crash. This age group has the largest proportion of drivers who were distracted.

As of December 2012, 171.3 billion text messages were sent in the US (including Puerto Rico, the Territories, and Guam) every month. Five seconds is the average time a driver's eyes are off the road while texting. When traveling at 55mph, that's enough time to cover the length of a football field blindfolded.

A quarter of teens respond to a text message once or more every time they drive. 20 percent of teens and 10 percent of parents admit that they have extended, multi-message text conversations while driving.

####

#### What is an Electronic Newspaper?

An electronic Newspaper is a self-contained, reusable, and refreshable version of a traditional newspaper that acquires and holds information electronically. (The electronic newspaper should not be confused with newspapers that offer an online version at a Web site.)

#### What is the difference between a Newsletter and a Newspaper?

A newspaper publishes stories and information for and about a city/region/state/country and covers a variety of topics, events, and developments.

A Newsletter is published by a specific organization (school, club, business) and informs mainly about the organization's activities.

####



**GET A HAIRCUT  
AT FLYING J  
Lebec, CA  
(661) 248-2888**

**STEPHANIE KOSKA**

- Open 7 days a week at 10am; Tuesday until 9pm
- Full service family hair salon - Colors, Highlights, Perms, Cuts and styles . American Crew and Matrix hair care products for sale.
- We take Visa, Master and Discover cards
- Walk ins welcome. Right next to Denny's.

## Animals Matter

## Frazier Park Library (کتابخانه فrazier پارک)



### Library Hours & Calendar

- Sunday: closed  
 Monday: closed  
 Tuesday: 11am – 7pm  
 Wednesday: 11am – 7pm  
 Thursday: 11am – 7pm  
 Friday: 9am – 5pm  
 Saturday: 9am – 5pm
- Tuesday: 11:30 a.m. Family Storytime with *Christine Kearns-Brown*
- Wednesday: 3:30 p.m. **Chess** Everyone is welcome. Chess Coach, *Bill Hopper* available to teach beginners.
- Thursday: 11:30 a.m. **Personal Computer Coach**.  
 3:30 p.m. **Barks & Books** with *Donna Marie Kuehn*; children build their reading skills by sharing stories with therapy dog *Ginger Snap*.  
 3:30 p.m. **Sign Language Class** by *Anita Anderson*. All ages welcome!



April 10: 3:30 p.m. **Beginning Excel** – Learn the Basics of Microsoft Excel

Friday:

April 11: 3:30 p.m. **Foreign Intrigue Book Discussion**: Read & discuss the book *Zen Attitude* by Sujata Massey

Saturday:

9-9:30 a.m. **Free Beginning Piano**  
 3:30 -5:00 p.m. **Reading of the Classics** by local actors and community; all are welcome.

April 26: 10:00 a.m. **Quilt & Chat** - learn techniques, share ideas, & work on group projects

May 3: 10:00 a.m. **"I used to Be"** Photography Presentation by *Gerald Smith*, one of the Last great studio photographers of the glamorous Hollywood era presents photos and stories from a time gone by. Listen and see what you otherwise only read in history books.



Please call 661-245-1267 for more info.

####

### In-N-Out Cover to Cover Club

"In & Out" fast food restaurant has a contest at the Library from March 1st to April 12th for children ages 4 to 12 years old. Each child interested in participating

1. picks up a reading log at the library counter,
2. fills out the books they have read.
3. When 5 titles are filled in, the parent signs the card that the books have been read, and
4. they bring the card in to the library and



5. the library staff will issue a gift certificate for a *free* hamburger or cheeseburger from "In & Out".

Children have a chance to receive up to three hamburgers or cheeseburgers.

**As of March 28, nearly 20 local children have received an In-N-Out Burger, up to six kids have**  
**####**

### **Journalism Class for Beginners - a joint effort of the Frazier Park Library and the GBU Mountain News**

Friday, April 11, from 3:30 p.m. to 5:00 p.m. is the start of the first Journalism Class for Beginners.

Everyone between the age of 14 and up is invited to participate.

You must, however, have some working knowledge about Computer, Microsoft, and have used the Internet before for e-mail and research.

In the beginning you will learn and understand

- how to cover the WHAT - WHO - WHEN - WHERE - WHY of any story
- how to research and find facts and sources
- how to check and re-check the reliability of sources
- to read different features in newspapers, magazines, and on the Web
- how to write one article of 500+ words per month
- how to come up with story ideas
- to pay attention, take notes, ask questions
- the writing styles for news, features, reviews, opinion, columns, sports, press-releases
- history, ethics, laws, and guiding principles of the press

This is intended to be an ongoing class for each Friday. If you have any questions please call the Frazier Park Library Manager *Marie Smith* at 661-245-1267 or contact *Gunnar J Kuepper* via <GBUmountainNEWS@gmail.com>



## In-n-Out Cover to Cover Club

March 1 - April 12, 2014

Children, ages 4-12, are invited to read five library books and earn a free hamburger or cheeseburger from In-n-Out Burger.

KERN COUNTY LIBRARY





## **Incidents & Accidents**

### **Throughout Kern County**

#### **Bakersfield - Search Warrants Result in Multiple Arrest and Seizures of Methamphetamine and Cocaine**

*By Kern County Sheriff's Office*

On Wednesday, April 2, 2014, officers from the California Multi-Jurisdictional Methamphetamine Task Force, with assistance of the Sheriff Office Major Violators Unit and the Kern Narcotics Enforcement Team served two narcotics related search warrants in the 800 block of 33rd Street. These warrants were the culmination of a short term narcotics investigation. The warrants were served at two adjoining apartments. During the search of the first apartment narcotics, items indicative of narcotics sales and a loaded firearm were located. Three subjects were arrested from this apartment; 26 year old *Crystal Gutierrez*, 35 year old *Victor Candela*, and 32 year old *Angel Arias* were arrested for various narcotics related charges.

At the second apartment officer's located narcotics, items indicative of narcotics sales, and narcotics paraphernalia. There were five adults arrested from this apartment which included 50 year old *Orlando Contreras*, 48 year old *Trisha Garcia*, 38 year old *Cynthia Nieto*, 48 year old *Andrew Perales* and 22 year old *Leah Vega*. These subjects were all charged with various narcotics related charges or had outstanding warrants.

On Thursday, April 3, 2014, an unrelated search warrant was served in the 1900 Block of Avon Street in South Bakersfield. Officers from California Multi-Jurisdictional Methamphetamine Task Force with the assistance of the Tri County HIDTA Task Force executed the warrant after an undercover officer purchased narcotics from a subject. In a subsequent search officers located a loaded firearm. During the service of the search warrant officers located just under a half of a pound of suspected cocaine and items consistent with the sales of narcotics. 22 year old *Eduardo Rodriguez* was arrested for several narcotics related charges. Officers were able to determine later that the firearm located was stolen in an unrelated Bakersfield Police Department case.

#### **Bakersfield – Fatal shooting of a 13-year old teen**

*by Kern County Sheriff's Office Coroner Section*

On Tuesday morning, April 1, 2014 at 1:18 a.m. Cortez Batiste, only 13(!) years old, was found suffering from

multiple gunshot wounds in the 1500 block of East Brundage Lane in Bakersfield, CA. He was pronounced dead at the scene. Bakersfield Police Department is the investigating agency for that homicide.

#### **Bakersfield – Homicide Arrest**

*By Kern County Sheriff's Office*

On April 23rd, 2010 at about 7:00 pm Kern County Sheriff's deputies responded to Kern Medical Center regarding a four year old boy, Mark (Markey) Allan Dixon, who was being treated at the hospital. Deputies determined that Dixon had sustained trauma to his upper torso and his injuries appeared suspicious. He was listed in critical condition.

During an investigation it was determined that Dixon's injuries were not consistent with explanations that had been given as to how he had been injured. Dixon was later airlifted to Children's Hospital in Madera where he died the following day.

During the investigation detectives served a search warrant at the home where Dixon had been living, a travel trailer on the Cowen's Pet Resort property at 22110 Stockdale Hwy. west of Bakersfield. Detectives continued to investigate the case for approximately four years and in March 2014 the case was submitted to the Kern County District Attorney's (DA) Office for review. On March 24th, 2014 the DA's Office issued a warrant for the arrest of 31 year old Alexis Dixon, Mark Dixon's mother, for one count of first degree murder and one count of child abuse resulting in death. On March 31st at about 3:30 pm deputies arrested Alexis Dixon for the outstanding warrant. She was booked into the Kern County Jail. Her bail has been set at \$2,000,000.

#### **Bakersfield – Narcotics & Firearms Found**

*By Kern County Sheriff's Office*

On Friday, March 28, 2014 at approximately 7:00 p.m., Deputies from the Sheriff's Office Gang Suppression Section went to the 800 block of Normandy Dr. in Bakersfield to conduct a parole search. As deputies approached the front of the residence they contacted 21 year old, Richard Gutierrez. During a search of Gutierrez, deputies located a loaded handgun, methamphetamine and narcotic paraphernalia. Gutierrez was arrested and booked on multiple charges including, possession of a firearm and ammunition by a convicted felon, possession of a controlled substance while armed with a firearm and participation in a criminal street gang.

**Bakersfield – Update on the Fatal Shooting involving Kern County Sheriff's Deputies**

*By Kern County Sheriff's Office*

On Wednesday, March 26, 2014, at about 10:11 PM a deputy assigned to the Sheriff's Gang Suppression Unit observed a single rider on a 1998 Honda VTR 1000 motorcycle driving at a high rate of speed in the residential neighborhood near Beardsley Avenue. When the deputy attempted to conduct a vehicle enforcement stop on the motorcycle, the driver of the motorcycle, later identified as forty-one (41) year old *Christopher McDaniel*, failed to yield to the officer's red lights and siren. The deputy pursued the motorcycle on several residential streets through Oildale. Additional deputies joined the pursuit, including a canine unit. *McDaniel* led deputies on several residential streets where he drove with wanton disregard for the public, by driving with excessive speed, failing to stop at posted stop signs or traffic lights, and driving the motorcycle on pedestrian sidewalks. The deputies lost sight of *McDaniel* in the area of River View Park. While deputies searched the area of River View Park other deputies began monitoring intersections that would provide ingress and egress from the area where *McDaniel* was last seen. *Deputy Aaron Warmerdam* (8 year Veteran) and *Deputy Jeffrey Kelley* (6 year Veteran, and canine handler) began monitoring the intersection of Beardsley Avenue and S. Plymouth Avenue for *McDaniel*. A short time later *Deputy Kelley* observed *McDaniel* driving the motorcycle north bound on South Plymouth Avenue towards Beardsley Avenue. As *McDaniel* entered the intersection of South Plymouth and Beardsley he lost control of the motorcycle and crashed, coming to rest in the middle of Beardsley Avenue. After the crash *McDaniel* stood up and began running east bound on Beardsley Avenue directly towards *Deputy Warmerdam*. *Deputy Warmerdam* pulled out his baton and attempted to arrest *McDaniel* at the same time *Deputy Kelley* deployed his Canine partner, *Luke*. *McDaniel* then pulled a hand gun from his waistband and pointed it at *Deputy Warmerdam*, who was approximately five feet away from *McDaniel*. Both *Deputy Warmerdam* and *Deputy Kelly* then fired three rounds each from their handguns, at *McDaniel*, causing *McDaniel* to drop his gun and fall to the ground. Deputies immediately began administering first aid to *McDaniel*. *McDaniel* was then transported by ambulance to Kern Medical Center where he was pronounced dead shortly after arrival at 10:47 PM.

While deputies were providing medical aid to *McDaniel*, the canine handler discovered the canine *Luke* had been shot. The canine was transported to an emergency veterinarian, and has undergone at least one surgery, and is expected to survive. The subsequent investigation revealed that the motorcycle *McDaniel* was operating had been reported stolen on January 30th. There was evidence at the scene that showed *McDaniel* fired one round from his firearm during the incident. The entire incident lasted less than four minutes.

*Deputy Warmerdam* and *Deputy Kelley* are on routine administrative leave pending a review from the Lethal Force Review Board.

**Lamont - Fatal Car Accident**

*by Kern County Sheriff's Office Coroner Section*

On Monday, March 24, 2014 at 3:15 p.m. 48year-old *San Juana Coronado* was gravely injured in a car accident at Edison Road and DiGiorgio Road in Lamont. The resident of Arvin was a passenger in a vehicle that was struck by another vehicle. She was transported to Kern Medical Center where she was pronounced dead at 4:09 p.m.

###

**Kern Canyon Highway 178 - Hoist Rescue**

*by Kern County Fire Department*

On Friday, March 28, at 8:40 p.m. the Kern County Fire Department responded to a call from the Kern County Sheriff's Office to assist in a rescue. Two engines, one truck, one patrol, USAR 52 & 61, and two additional units with a total of 18 fire personnel were dispatched to a woman who had fallen 75 feet off Highway 178 about six miles east in Kern Canyon.

First arriving fire crews made their way down the canyon to the patient and found her with serious injuries. A rescue operation was initiated utilizing multiple rope rescue systems. After tending to the patient's injuries, it was determined that, due to the steep terrain, the best route for extrication was to hoist the patient by helicopter. Kern County Sheriff helicopter, Air 5, was dispatched and successfully hoisted the patient out and to an awaiting ambulance at the entrance of the canyon on Highway 178. The woman was transported to Kern Medical Center.

**However the EMS transport procedures following the rescue have raised a couple of questions that have not –yet- been answered by all responding agencies.**

Arts – Music – Theatre --- Business Affairs



# *Your* **TSHIRTMAN**

**YOUR "MINI" T-SHIRT WAREHOUSE ON THE HILL!**

## **OVER-STOCK SPECIALS:**

<b>BASIC T'S</b>	<b>-----</b>	<b>\$2.00 EACH</b>
<b>LONG SLEEVE T'S</b>	<b>-----</b>	<b>\$4.50 EACH</b>
<b>LADIES STYLES</b>	<b>-----</b>	<b>\$3.00 EACH</b>
<b>CREW NECK SWEATSHIRTS</b>	<b>-----</b>	<b>\$5.00 EACH</b>
<b>PULLOVER HOODIES</b>	<b>-----</b>	<b>\$9.00 EACH</b>
<b>FULL ZIP HOODIES</b>	<b>-----</b>	<b>\$13.00 EACH</b>

***"WHILE SUPPLIES LAST!"***



**COME SEE US! WE'RE CENTRALLY LOCATED IN F.P.  
ACROSS FROM SUE'S TAVERN OPEN 9 - 5 WEEKDAYS**

**3441 Mount Pinos Way • F.P. • 661-245-2350**

## Teens

### McCarthy Announces Annual High School Art Competition

By US Congressman *Kevin McCarthy* Office

Congressman Kevin McCarthy announced today that he is inviting all high school students in the 23rd Congressional District to compete in the 2014 Annual “An Artistic Discovery” Congressional Art Competition for high school students. High school students from portions of Kern, Tulare, and Los Angeles counties who reside in the 23rd Congressional District can submit artwork on a wide variety of subjects



and mediums. The **deadline for submission is Friday, April 11, 2014.** Entries will be accepted at McCarthy’s Bakersfield office. The winning entry from Congressman McCarthy’s 23rd Congressional District will be displayed in a corridor leading to the United States Capitol for one year.

The artwork must be an original concept, two dimensional and no larger than 28” x 28” (the measurement should allow for framing) and 4” in depth. Paintings (oil, watercolor, acrylic, etc.), computer generated art, photography, drawings, collages and prints (lithographs, silk screens, monotypes, woodcuts and intaglio methods) are acceptable.

The winner of the overall competition will receive roundtrip airline tickets to travel to the exhibit opening in Washington, D.C. in June.

In addition to the overall winner of the competition, awards will be given to those who place first, second and third in the following three categories: photography, computer generated art, and artwork of all other mediums.

All artwork will be exhibited to the public at an awards reception on Friday, April 25, 2014 at Metro Galleries, 1604 19th Street in Bakersfield from 6:30PM-7:30PM.

For further information, please contact Congressman McCarthy’s Bakersfield office at (661) 327-3611 or any high school art department in the 23rd Congressional District.

## Weather



### Frazier Park Weather Forecast:

Friday, April 4:	20% rain	high 54°F	low 39°F
Saturday, April 5:		high 54°F	low 41°F
Sunday, April 6:		high 68°F	low 48°F
Monday, April 7:		high 72°F	low 52°F
Tuesday, April 8:		high 73°F	low 54°F
Wednesday, April 9:		high 70°F	low 46°F
Thursday, April 10:		high 61°F	low 43°F

### Snowiest US Cities based on Average Snowfall:

Stampede Pass in Washington State with 430 inches, Valdez in Alaska with 321 inches, and Mount Washington in New Hampshire with 260 inches.

### Impressions from Wednesday’s Storm in the Frazier Mountain Communities



## Nature, Science & Technology



GBU Photo



GBU Photo



## Kern County

### Board of Supervisors Meetings

The Kern County Board of Supervisors meets every Tuesday at 9:00 am and 2:00 pm in the County Administrative Building at 1115 Truxtun Ave. in Bakersfield.

At each meeting Members of the Public can address the Board on any matter even if it is not on this agenda but under the jurisdiction of the Board. Board members may respond briefly to statements made or questions posed by the public. They may ask a question for clarification, make a referral to staff for factual information or request staff to report back to the Board at a later meeting. Also, the Board may take action to direct the staff to place a matter of business on a future agenda. Speakers are limited to two minutes and asked to state and spell their names (for the record) before making a presentation.

If you are interested to receive the agenda(s) for upcoming or the minutes for previous Board meetings, please send an e-mail to [GBUmountainNews@gmail.com](mailto:GBUmountainNews@gmail.com)

####

### Kern County History – from Basket-weaving Indians to Supersonic Airplanes

1769 – The Kern area becomes part of the Spanish Empire

1772 – Don Padre Fargas is the first “white” man to enter the future Kern County area via the Grapevine Canyon and calls the valley Buena Vista

1822 – Kern area became part of the Republic of Mexico

1837 – Peter Lebeck was killed by a bear at the later site of Fort Tejon

1845-46 – Third Freemont expedition named Kern River after Topographer Edward M. Kern

1848 – Kern area became part of the United States territory with the Treaty of Guadalupe-Hidalgo

1850 – California became the 31<sup>st</sup> US state with the Kern area being part of Mariposa County

1852 – Tulare County was created which included today's Kern County

1854 – Fort Tejon established

1866 – Kern County became incorporated with Havilah (located just south of Lake Isabella in the mountains) as County Seat

1872 – County seat is moved to Bakersfield



BOYS & GIRLS CLUB

# **THE CLUB**

**Looking for a place to  
hang out after school?**

**Come by "The Club" Teen Program,  
Located @ Frazier Park Elementary**

Play Ping Pong, board games, watch movies, listen to music, and hang with your friends. Daily homework assistance is provided along with the opportunity to work on school projects. Snack is served daily.

**No cost to attend!!**

**For Teens 13 to 18 – Open Now!!  
Monday thru Friday 3:30pm to 6:00pm**

**To get a Membership to The Club,  
stop by the Boys & Girls Club @ Frazier Park Elementary  
Or call (661)245-3139 for more information.**

**The Club will also be hosting Teen Nights one Friday night a  
month. Come share your ideas!**



**GBU Mountain News** is an electronic newspaper that currently reaches out to **3,954** residents, businesses, and organizations throughout the Frazier Mountain Communities as well as public and elected officials in the Kern-Los Angeles-Ventura Counties area. The *GBU Mountain News* is published and distributed twice to four times a week.

**Publisher & Editor: Gunnar J Kuepper**

**Tel.: 661-402-2717** (always dial area code)

The electronic format allows the readership to be always informed in a timely fashion.

If you are interested in receiving *GBU Mountain News* regularly, just send an e-mail to [GBUmountainNews@gmail.com](mailto:GBUmountainNews@gmail.com)

Previous issues of the *GBU Mountain News* can be downloaded free of charge:

**LII – March 28, 2014:**

<http://www.pdf-archive.com/2014/03/29/gbu-mountain-news-lii-march-28-2014/>

**LI – March 20, 2014:**

<http://www.pdf-archive.com/2014/03/21/gbu-mountain-news-li-march-20-2014/>

**L – March 13, 2014:**

<http://www.pdf-archive.com/2014/03/13/gbu-mountain-news-l-march-13-2014/>

**IL – March 6, 2014:**

<http://www.pdf-archive.com/2014/03/06/gbu-mountain-news-xlix-march-6-2014-1/>

**XLVIII – Feb 27, 2014:**

<http://www.pdf-archive.com/2014/02/27/gbu-mountain-news-xlvi-27-2014/>

**XLVII – Feb 15, 2014:**

<http://www.pdf-archive.com/2014/02/15/gbu-mountain-news-xlvi-february-15-2014/>

**XLVI – Feb 5, 2014:**

<http://www.pdf-archive.com/2014/02/05/gbu-mountain-news-xlvi-february-5-2014/>

**XLV – Jan 31, 2014:**

<http://www.pdf-archive.com/2014/02/01/gbu-mountain-news-xlv-january-31-2014/>

**XLIV – Jan 27, 2014:**

**XLIII – Jan 20, 2014:**

<http://www.pdf-archive.com/2014/01/21/gbu-mountain-news-xliii-jan-20-2014/>

**XLII – Jan 13, 2014:**

<http://www.pdf-archive.com/2014/01/14/gbu-mountain-news-xlii-jan-13-2014/>

**XL I – Jan 4, 2014:**

<http://www.pdf-archive.com/2014/01/07/gbu-mountain-news-xli-jan-4-2014/>

**XL – Dec 30, 2013:**

<http://www.pdf-archive.com/2013/12/30/gbu-mountain-news-xl-dec-30-2013/>

and

<http://www.pdfhost.net/index.php?Action=Download&File=cd65038fc9422e62110138aa73c3fcc2>

**XXXIX – Dec 20, 2013:**

<http://www.pdf-archive.com/2013/12/20/gbu-mountain-news-xxxix-dec-20-2013/>

**TThXXXVIII – Dec 17, 2013:**

<http://www.pdf-archive.com/2013/12/17/gbu-mountain-news-xxxviii-dec-17-2013/>

**XXXVII – Dec 11, 2013:**

<http://www.pdf-archive.com/2013/12/12/gbu-mountain-news-xxxvii-dec-12-2013/>

**XXXVI – Dec 8, 2013:**

<http://www.pdf-archive.com/2013/12/09/gbu-mountain-news-xxxvi-dec-8-2013/>

**XXXV – Nov 28, 2013:**

<http://www.pdf-archive.com/2013/11/29/gbu-mountain-news-xxxv-nov-28-2013/>

**XXXIV – Nov 22, 2013:**

<http://www.pdf-archive.com/2013/11/23/gbu-mountain-news-xxxiv-nov-23-2013/>

**XXXIII – Nov 14, 2013:**

<http://www.pdf-archive.com/2013/11/14/gbu-mountain-news-xxxiii-nov-14-2013/>

**XXXII – Nov 10, 2013:**

<http://www.pdf-archive.com/2013/11/13/gbu-mountain-news-xxxii-nov-10-2013/>

**XXXI – Nov 6, 2013:**

<http://www.pdf-archive.com/2013/11/13/gbu-mountain-news-xxxi-nov-6-2013/>

<http://www.pdfhost.net/index.php?Action=Download&File=0689343fb6b43ae03b637f0fce290bb2>

**XXX – Nov 1, 2013:**

<http://www.pdf-archive.com/2013/11/13/gbu-mountain-news-xxx-nov-1-2013/>

**XXIX – Oct 24, 2013:**

<http://www.pdfhost.net/index.php?Action=Download&File=184b00573d53b7f10a124a10b38e5556>

**XXVIII – Oct 16, 2013:**

<http://www.pdfhost.net/index.php?Action=Download&File=fe1115a24159830ac202a88f8013cc4b>

**XXVII – Oct 12, 2013:**

<http://www.pdfhost.net/index.php?Action=Download&File=70688be4d8fdf65c31852bb5e1f26453>

**XXVI – Oct 9, 2013:**

<http://www.pdfhost.net/index.php?Action=Download&File=1634eb0f9c47f71371f53ec077a73d8f>

**XXV – Oct 2, 2013:**

<http://www.pdfhost.net/index.php?Action=Download&File=dd98dbecec0ca3ff378e52ea2f0e7aed>

**XXIV – Sep 25, 2013:**

<http://www.pdfhost.net/index.php?Action=Download&File=839da0afacc95a7a3bc42b5e1e565a4e>

**XXIII – Sep 19, 2013:**

<http://www.pdfhost.net/index.php?Action=Download&File=896979c0c06c3189cff861a116d76b7a>

**XXII – Sep 16, 2013:**

<http://www.pdfhost.net/index.php?Action=Download&File=ed5d6de8f8979bb41e5184f14b48820e>

**XXI – Sep 10, 2013:**

<http://www.pdfhost.net/index.php?Action=Download&File=37fc6ad6d109abfbc51164a7f5b72835>

**XX – Sep 5, 2013:**

<http://www.pdfhost.net/index.php?Action=Download&File=78a14d5c5dfc275a74fa1abddc9308bd>

**XIX – Sep 2, 2013:**

<http://www.pdfhost.net/index.php?Action=Download&File=178de8b870e7bd47cebbd67cf794d62d>

**XVIII – Aug 28, 2013:**

<http://www.pdfhost.net/index.php?Action=Download&File=489a13bb372ace9cbdda0594e7db804e>

**XVII – Aug 23, 2013:**

<http://www.pdfhost.net/index.php?Action=Download&File=557098f177680d3973e253271b81e052>

**XVI – Aug 21, 2013:**

## Safety & Disaster Preparedness

### Six P's for immediate evacuation

If you have to leave / evacuate your home immediately, remember the six "P's":

1. People & Pets
2. Purse: ID, driver's license, credit cards, cash, keys
3. Personal Computer (laptop): critical information
4. Pills: medication, eye-glasses
5. Papers: important insurance, financial, and other documents (can also be scanned and stored on PC)
6. Pictures: irreplaceable memorabilia (can also be scanned and stored on PC)



**Rebecca L. Gipson**, Office Representative Lic. #0EB3255  
**Mitch Wood**, Agent Lic. #0792048

3015 Mt Pinos Way, #202, PO Box 1687  
Frazier Park, CA 93225-1687  
Bus 661 245 3728 Fax 661 245 3720  
rebecca.l.gipson.sjh@statefarm.com  
mitch@mitchwoodinsurance.com  
Hours: Tues-Fri 9-5 and Sat 10-1

**LIFE INSURANCE IS A GREAT INVESTMENT FOR THE FUTURE**

<http://www.pdfhost.net/index.php?Action=Download&File=389ccd1a24948015a2c24e8b48a237e4>

**XV – Aug 14, 2013:**

<http://www.pdfhost.net/index.php?Action=Download&File=6eaf2c0a19d3de8f76e10e4a88988dbd>

**XIV – Aug 9, 2013:**

<http://www.pdfhost.net/index.php?Action=Download&File=3864abb7e1ebae5f4a42fe487eb8a15b>

**XIII – July 31, 2013:**

<http://www.pdfhost.net/index.php?Action=Download&File=3ce28ff3c74179c5a7d37d9e954f13dd>

**XII – July 25, 2013:**

<http://www.pdfhost.net/index.php?Action=Download&File=27b0e476a28874fbe0d1d49c93b7076b>

**XI – July 19, 2013:**

<http://www.pdfhost.net/index.php?Action=Download&File=cd6832f58c7770f5552bfedc7b2aa2e0>

**X – July 16, 2013:**

<http://www.pdfhost.net/index.php?Action=Download&File=ae3339331d2e9cf724a8219d503235b4>

**IX – July 14, 2013:**

<http://www.pdfhost.net/index.php?Action=Download&File=6a9d166fa152309f80814299a2d69646>

**VIII – July 10, 2013:**

<http://www.pdfhost.net/index.php?Action=Download&File=c8bff35fe567c1c6d44cbe3e66f1bb9a>

**VII – July 6, 2013:**

<http://www.pdfhost.net/index.php?Action=Download&File=826d4d4d858754ae6e76661147b92632>

**VI – July 4, 2013:**

<http://www.pdfhost.net/index.php?Action=Download&File=f13b9b1efb39698d08b0e2351b7268b0>

**V – July 2, 2013:**

<http://www.pdfhost.net/index.php?Action=Download&File=078a39763e0690799332432d4eb1185c>

**IV – July 1, 2013:**

<http://www.pdfhost.net/index.php?Action=Download&File=bca5abf2bcb5773008d2e73e63229e9f>

**III – June 29, 2013:**

<http://www.pdfhost.net/index.php?Action=Download&File=1e19e3f7f4c3af9b36cebbe6f6c4910c>

**II – June 28, 2013:**

<http://www.pdfhost.net/index.php?Action=Download&File=d0d9fa86f77bf270ce0046d46eaf0b8b>

**I – June 26, 2013:**

<http://www.pdfhost.net/index.php?Action=Download&File=11c4331666da75c354a4ec5815f22b38>

**S3 – 2013 Fiesta Days from Aug 6, 2013:**

<http://www.pdf-archive.com/2013/11/13/gbu-mountain-news-s3-on-fiesta-days-aug-6-2013/>

**S2 – Rancho Fire from July 22, 2013:**

<http://www.pdf-archive.com/2013/11/13/gbu-mountain-news-s2-on-rancho-fire-july-22-2013/>

**S1 – Lebec Fire from July 7, 2013:**

<http://www.pdf-archive.com/2013/11/13/gbu-mountain-news-s1-on-lebec-fire-july-7-2013/>



**Kern County Fire Hazard Reduction Requirements Due June 15th**

# 100' DEFENSIBLE SPACE Make Your Home FIRE SAFE



Contact your local Kern County Fire Station, CAL FIRE office, fire department, or Fire Safe Council for tips and assistance.  
[www.fire.ca.gov](http://www.fire.ca.gov)

## Why 100 Feet?

Following these simple steps can dramatically increase the chance of your home surviving a wildfire!

A Defensible Space of 100 feet around your home is required by law.<sup>1</sup> The goal is to protect your home while providing a safe area for firefighters.

### 1 "Lean, Clean and Green Zone."

– Clearing an area of 30 feet immediately surrounding your home is critical. This area requires the greatest reduction in flammable vegetation.

### 2 "Reduced Fuel Zone."

– The fuel reduction zone in the remaining 70 feet (or to property line) will depend on the steepness of your property and the vegetation.

Spacing between plants improves the chance of stopping a wildfire before it destroys your home. You have two options in this area:

- a Create horizontal and vertical spacing between plants. The amount of space will depend on how steep the slope is and the size of the plants.
- b Large trees do not have to be cut and removed as long as all of the plants beneath them are removed. This eliminates a vertical "fire ladder."

When clearing vegetation, use care when operating equipment such as lawnmowers. One small spark may start a fire; a string trimmer is much safer.

Remove all build-up of needles and leaves from your roof and gutters. Keep tree limbs trimmed at least 10 feet from any chimneys and remove dead limbs that hang over your home or garage. The law also requires a screen over your chimney outlet of not more than ½ inch mesh.

1. These regulations affect most of the grass, brush, and timber-covered private lands in the State. Some fire department jurisdictions may have additional requirements. Some activities may require permits for tree removal. Also, some activities may require special procedures for, 1) threatened and endangered species, 2) avoiding erosion, and 3) protection of water quality. Check with local officials if in doubt. Current regulations allow an insurance company to require additional clearance. The area to be treated does not extend beyond your property. The State Board of Forestry and Fire Protection has approved Guidelines to assist you in complying with the new law. Contact your local CAL FIRE office for more details.



March 2011

## **Legislative Affairs**

### **A Look Ahead - Policy Committee Summary Report**

By California Senate Republican Office of Policy  
Courtesy of Senator Fuller

This report for the week of April 1, 2014 details selected significant Senate legislative activity anticipated next week. It includes information current as of Friday, March 28, 2014

**Agriculture** - Tuesday, April 1, 9:30 a.m., Room 113

- SB 835 (Hill)--Mandates compliance with voluntary federal guidelines for the use of medically important antimicrobial drugs (antibiotics) in food producing animals in California.

**Education** - Wednesday, April 2, 9:00 a.m., Room 4203

- SB 1017 (Evans)--An urgency bill, imposes an oil and gas severance tax upon any operator for the privilege of severing oil or gas from the earth or water in this state for sale, transport, consumption, storage, profit, or use, as provided, at specified rates, calculated as provided. Requires the tax to be administered by the State Board of Equalization, which would deposit all tax revenues, penalties, and interest collected pursuant to these provisions into the California Higher Education Fund. Establishes the California Higher Education Endowment Corporation (CHEEC) in state government and requires the CHEEC to annually allocate the moneys in the continuously appropriated California Higher Education Fund, created by the bill, to the California Community Colleges, the California State University, and the University of California, the Department of Parks and Recreation, and to the California Health and Human Services Agency, in specified proportions and for expenditure as provided. Authorizes the Board of Equalization to invest the moneys in the fund.
- SB 1082 (Huff)--Requires the Department of Education to create a parent resources Web site that provides specific information relating to public school options, including information regarding the Open Enrollment Act, and school district and school

level reports on pupils outcomes including the Academic Performance Index.

- SB 1266 (Huff)--Requires local education agencies (LEAs) to provide emergency epinephrine auto-injectors to volunteer, trained personnel and requires these personnel to use those epinephrine auto-injectors to provide emergency medical aid to persons suffering from an anaphylactic reaction. Requires a school nurse, or a school administrator or designee who has received the training to obtain the prescription for epinephrine auto-injectors. Authorizes a public school to accept gifts, grants, and donations from any source for the support of the public school carrying out these provisions.
- SB 1394 (Wyland)--An urgency bill, requires the State Board of Education to amend local control funding formula (LCFF) regulations to require an LCFF expenditure made for the primary benefit of low income or English learner pupils to be expended on programs or services that are evidence based and have been shown to be effective in increasing the academic performance of those pupils and to require the State Department of Education to suspend LCFF to a county office of education, a school district, or a charter school if the department finds the entity is not significantly improving pupil reading and comprehension skills and English learner performance.
- SB 1455 (DeSaulnier)--Enacts the California Reading and Literacy Improvement and Public Library Construction and Renovation Bond Act of 2014, for submission to the voters at the 2014 statewide general election, that would authorize the issuance of an unspecified amount of General Obligation bonds for the purpose of financing library construction and renovation.

**Energy, Utilities & Communications** - Tuesday, April 1, 9:30 a.m., Room 3191

- SB 900 (Hill)--Requires the California Public Utilities Commission (CPUC) to develop safety risk management procedures to assist the commission in determining the effects a proposed policy or rule change will have on safety and the development of a



sufficient evidentiary record to support the findings in a quasi-legislative proceeding.

- SB 962 (Leno)--Requires any advanced mobile communications device sold in California on or after January 1, 2015 to include a technological solution that can render the essential features of the device inoperable when the device is not in the possession of the rightful owner.
- SB 1090 (Fuller)--Prohibits the CPUC from authorizing an electrical corporation to employ default time-of-use pricing for residential customers unless it has made specified findings relative to any proposed time-of-use rates.

**Environmental Quality** - Wednesday, April 2, 9:30 a.m., Room 3191

- SB 1019 (Leno)--Requires an upholstered-furniture manufacturer to retain sufficient documentation to show the chemicals added to a product or component, as specified. Requires manufacturers of covered products, as defined, to indicate whether or not the product contains added flame retardant chemicals by including a specified statement on the product label. Requires the manufacturer to provide to the Bureau of Electronic and Appliance Repair, Home Furnishings, and Thermal Insulation (bureau), within 30 days of the request, documentation establishing the accuracy of the flame retardant chemical statement on the label, and requires the bureau to provide the Department of Toxic Substances Control with samples of the covered product or components thereof sold in California from products marked "contains NO added flame retardant chemicals" for testing for the presence of added flame retardant chemicals. States that if the department's testing shows that a covered product labeled as "contains NO added flame retardant chemicals" is mislabeled because it contains added flame retardant chemicals, the bureau is authorized to assess fines the against the manufacturers, as specified.
- SB 1122 (Pavley)--Appropriates revenues from the cap and trade program to implement sustainable communities strategies.

**Governance & Finance** - Wednesday, April 2, 9:30 a.m., Room 112

- SB 936 (Monning)--Authorizes the California Public Utilities Commission to issue financing orders to facilitate the recovery, financing, or refinancing of water supply costs for the Monterey Peninsula. The bill also authorizes the Monterey Peninsula Water Management District to issue water rate relief bonds if the CPUC finds that the bonds will provide savings to water customers on the Monterey Peninsula.
- SB 1291 (Nielsen)--Allows the Halcumb Cemetery District, to inter up to 40 nonresidents each per calendar year, up to a maximum of 400, under specified conditions.
- SB 1353 (Nielsen)--Deletes the January 1, 2016 sunset date included in AB 1265 (Nielsen) related to the amended Williamson Act contract lengths between local governments and agricultural land owners, allowing for 9 or 10 year lengths in addition to 10 or 20 years.

**Health** - Wednesday, April 2, 1:30 p.m., Room 4203

- SB 1046 (Beall)--Authorizes the Insurance Commissioner to assess administrative penalties for any violations related to coverage for the diagnosis and medically necessary treatment of severe mental illnesses of a person of any age and of serious emotional disturbances of a child, including any rules or orders adopted or issued based on violations of those provisions.
- SB 1135 (Jackson)--Prohibits sterilization for the purpose of birth control of an individual under the control of the Department of Corrections and Rehabilitation or a county correctional facility, as specified; also prohibits any means of sterilization of an inmate, except when required for the immediate preservation of life in an emergency medical situation and when required for the necessary treatment of a physical medical condition if certain requirements are satisfied, including that patient consent is obtained.

**Judiciary** - Tuesday, April 1, 1:30 p.m., Room 112

- SB 907 (Monning)--Corrects an ambiguity in the California International Arbitration Act to make the state a better forum for commercial international arbitration and conciliation.

- SCR 83 (Monning)--Directs the California Law Revision Commission to continue its study of designated topics that the Legislature previously authorized or directed the commission to study.

**Public Safety** - Tuesday, April 1, 10:30 a.m., Room 4203

- SB 910 (Pavley)--Expands the definition of domestic violence in the Penal Code Section dealing with the issuance of domestic violence protective orders to include cohabitants that are not in relationship but regularly reside in the household, the child of party, and anyone related by consanguinity or affinity within the second degree.
- SB 950 (Torres)--This bill would toll the statute of limitations for the crime of offering a bribe to a public official or for asking, receiving, or agreeing to receive a bribe by a public official until the discovery of the offense. It would further expand the statute of limitations for asking, receiving, or agreeing to a bribe from three years to four years.
- SB 1154 (Hancock)--Provides BART Police Officers with the authority to issue Emergency Protective Orders for individuals in a domestic violence situation within the transit system, and allows the authority to confiscate weapons while investigating these incidents.

**Transportation & Housing** - Tuesday, April 1, 1:30 p.m., Room 4203

- SB 992 (Nielsen)--Prohibits homeowner's associations in Common Interest Developments (CID's) from levying fines on property owners for failing to water plants or lawns in non-common areas during a declared drought emergency.
- SB 1204 (Lara)--Seeks to use funds from the cap and trade system to fund the development of zero-emission trucks, buses and off-road vehicles and equipment technologies.

- SB 1275 (De Leon)--Establishes the Charge Ahead California Initiative to be administered by the Air Resources Board (ARB) and requires them to adopt a 9-year funding plan to fund a number of programs geared at increasing the number of electric vehicles in California and to revise the criteria and guidelines of existing programs like the Clean Vehicle Rebate Project and the Hybrid and Zero-Emission Truck and Bus Voucher Incentive Project to increase access and direct benefits for disadvantaged and low- and moderate-income communities from electric transportation.

### **Distances from Frazier Park**

Pine Mountain Club	14 miles
Laval Road/I-5	18 miles
Castaic	32 miles
Santa Clarita, Shopping Centr	41 miles
Bakersfield, Panama Lane	41 miles
Bakersfield, Truxtun Avenue	46 miles
Lancaster	54 miles
Los Angeles, Downtown	75 miles
LAX	78 miles
Santa Maria	120 miles
Las Vegas, NV	298 miles
Sacramento, CA	320 miles
Washington, D.C.	2,700 miles

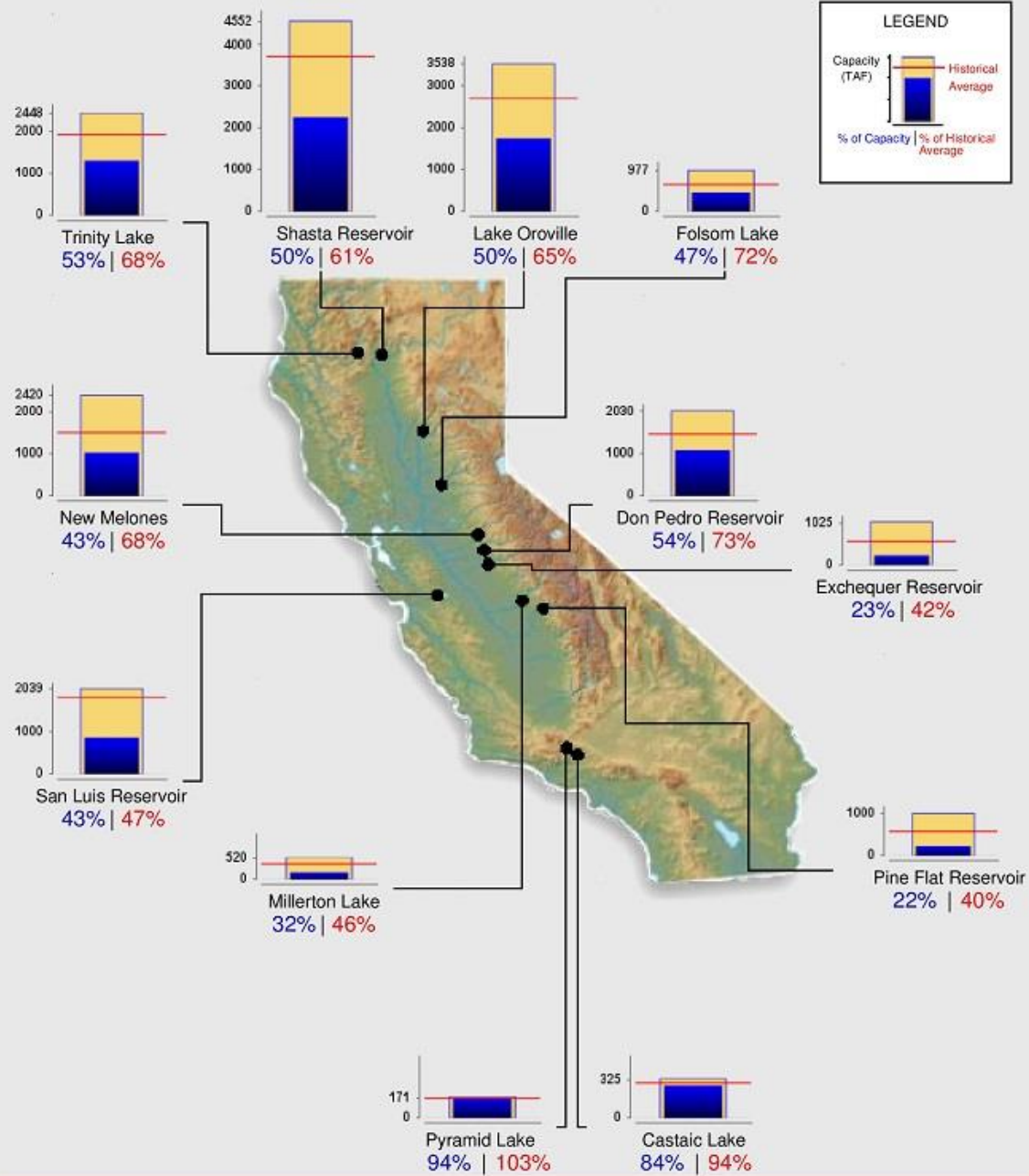
## **Open Editorial (Op Ed)**

An op-ed, abbreviated from opposite the editorial page, is a newspaper article that expresses the opinions of a named writer who is usually unaffiliated with the newspaper's editorial board. These are different from editorials (which are usually unsigned and written by editorial board members) and letters to the editor (which are submitted by readers of the newspaper).

# Reservoir Conditions

Ending At Midnight - April 3, 2014

## CURRENT RESERVOIR CONDITIONS



Graph Updated 04/04/2014 04:45 PM



## Health & Fitness

### *Family Dentistry for the Mountain Communities*

**Peter Porazik, D.D.S. & Mimi Porazik, D.D.S.**

We serve seniors, adults, and children in the Mountain Communities since 1997

We do: Crowns and bridges, esthetic filling and veneers, gum treatments, minor oral surgery and implants, orthodontics and invisiline, endodontics, full and partial removable dentures, full mouth reconstructions, bleaching, temporomandibular joint treatments ... and more.

We are: Peter Porazik has 38 years of experience in dentistry, is licensed in California since 1996. Our daughter Dr. "Mimi" Maria Porazik added orthodontics to our treatment offer and she is very good with children. All our younger patients love "Doctor Mimi". Our dental assistant Alicia speaks Spanish fluently and can overcome any language hurdles.

**Tel 661-245-1434 or 661-644-5456**

**We are located in Lebec at 2045 Lebec Road,**  
near the Lebec Post Office and just north of the I-5 Lebec exit.

We are here for you Monday, Tuesday, Wednesday & Friday from 8 a.m. – 6 p.m. And we are available for appointments on Saturdays.

We use modern technologies which allow for drill-less and painless care with no needles needed.

We accept most insurances – City Healthcard - Care Credit

### **California Department of Health Warns Consumers Not to Eat Five Varieties of Del Castillo Foods Mexican Pastries Due to Undeclared Milk Allergens**

On Thursday, March 26, the California Department of Public Health warned consumers with milk allergies not to eat five varieties of Del Castillo Foods Mexican pastries:

- La Campana Panaderia – Conchitas (Sea Shells)
- La Campana Panaderia – Cemitas (Sweet Rolls)
- La Campana Panaderia – Cuernitos (Horns)
- La Campana Panaderia – Novias (Brides)
- La Campana Panaderia – Chilindrinan (Crystal Sugar Shells)

Del Castillo Foods of Lodi, California, is voluntarily recalling all five varieties because they contain milk that is not declared on the product labels. The recall was initiated after CDPH identified the labeling omission

during a routine inspection of the facility. No illnesses have been reported at this time.

The Conchitas, Cemitas, Cuernitos, Novias, and Chilindrinan are packaged four pieces to a bag. The clear plastic bag is labeled with the following brand name, La Campana Panaderia and has a net weight of 11 ounces. Product photos can be viewed on the CDPH website.

Del Castillo Foods has segregated its inventory and is notifying consumers not to eat these products if they have a sensitivity to milk allergens. Consumers that have the recalled products should return them to the place of purchase. People who have an allergy or severe sensitivity to milk run the risk of a life-threatening allergic reaction, anaphylaxis, which requires immediate medical attention.

Consumers that have experienced an allergic reaction after consuming any of these products should contact their health care provider. Anyone observing the products being offered for sale is encouraged to call CDPH's toll free complaint line at (800) 495-3232.

## **Business Directory**

### **Automobile Repair & Service**

- DunnRight, 3811 Mount Pinos Way, Frazier Park, Tel 661-245-3866
- Martin's Garage Auto Repair, 1441 Frazier Mountain Road, Lebec, Tel 661-248-6000

### **Computer Repairs**

- Computer & Games, 633 San Gabriel Trail, Frazier Park, Tel 661-242-1214

### **Day Spas**

- LeBeau Organic Day Spa and Wellness Center, 23460 Cinema Drive, Suite E, Valencia, CA 91355, Tel 661-287-5828 - [www.lebeauspa.com](http://www.lebeauspa.com)
- The Ivy Day Spa, 24320 Town Center Drive, Valencia, CA, Tel 661-260-1244
- La Ti Da Salon & Boutique, 2025 18TH Street, Bakersfield, CA 93301, Tel 661-631-1112

### **Grocery Stores**

- Trader Joe's Bakersfield, 8200 Stockdale Highway, Tel 661-837-8863
- Trader Joe's Santa Clarita, 26517 Bouquet Canyon Road, Tel 661-263-3796
- Ralphs Grocery Store, 29675 The Old Road (at Hasley Canyon Rd), Castaic, CA 91384

### **Hotel**

- Holiday Inn Express, 612 Wainright Ct, Lebec, CA 93243, Tel 661-248-1600

### **Insurance**

- State Farm, Mitch Wood, 3015 Mt Pinos Way, Frazier Park, Tel 661-245-3728

### **Pet Food & Supplies**

- Petco Animal Supplies, 26501 Bouquet Canyon Road, Saugus, Tel 661-297-6936
- Petco Animal Supplies, 8220 Rosedale Hwy, Bakersfield, CA 93312, 661-587-1097

### **Pet Services**

- Blue Rose Pet Salon, 3429 Los Padres Drive, Frazier Park, for appointments call 661-245-3635

### **Pharmacy**

- Walgreens Castaic, 27983 Sloan Canyon Road, Tel 661-775-0840
- Rite Aid Castaic, 31910 Castaic Road, Tel 661-295-0966

### **Photographer**

- GBU Photography, Frazier Park, Tel 661-402-2717, see [https://www.facebook.com/pages/GBU-Photography/109453262410990?sk=photos\\_albums](https://www.facebook.com/pages/GBU-Photography/109453262410990?sk=photos_albums)

### **Realtors**

- The Gorman Real Estate Co., Ron & Karen Blevins, Gorman, Tel 661-248-6196 - [www.gormanrealestate.com/](http://www.gormanrealestate.com/)
- Carol Swanston, All Seasons Realty, Pine Mountain Club, Tel 661-242-3752
- Greg & Monica Brackin, Alpine Village Realty, 16215 Pine Valley Ln, PMC, Tel 661-242-2685 - <http://gregbrackin.point2agent.com/>

### **Restaurants**

- Outback Steakhouse Valencia, 25261 The Old Road, Newhall, CA 91321, Tel 661- 287-9630
- Outback Steakhouse Bakersfield, 5051 Stockdale Hwy., Bakersfield, CA 93309, Tel 661-834-7850
- Elephant Bar Restaurant, 27063 McBean Parkway, Valencia, CA 91355, 661- 799-8640

### **T-Shirts**

- Your T-Shirt Man, Jerold Parker, 3441 Mt Pinos Way, Frazier Park, Tel 661-245-2350

### **Travel Agent**

- Teri Pierce, Protravel Inc., Lake of the Woods, Tel 661-245-4798

### **Toys & Games**

- Computer & Games, Scott Parson, 633 San Gabriel Trail, Frazier Park, Tel 661-242-1214

### **Veterinarian**

- Valencia Veterinary Center, open 24/7, 23928 Summerhill Lane, Santa Clarita, CA 91354 Tel 661-263-4770

## Classifieds:

### Cars for Sale

- **2000 Black Chevy Truck** as is, licensed and smogged; please submit offer (661) 248-6872 - Lebec County Water District
- **2000 Dodge Van** – lift for disabled, 7 passengers, tinted windows, new tires, \$8,500 OBO; 661-808-4643 or 661-204-9597
- **2001 Nissan Quest** – V6 engine, automatic, A/C, power windows, P/L, runs good, clean title, 138,000 miles \$4,800; 661-204-1833
- **Ford Explorer 1994** Sport, 5-spd, Runs Great New Tags, Need Some TLC, \$1,650/OBO, Call 661-873-1189
- **2000 Ford Explorer XLS** – automatic, AC, clean title, runs great, 134,000 miles, 661-335-2174
- **1995 Dodge Ram Sport** – good condition, Sport, V8 with longbed, extended cab, and liner, \$2,900, [anafores89@yahoo.com](mailto:anafores89@yahoo.com), 760-468-2669, 661-748-5610
- **1998 Dodge Durango** – 4x4, A/C, runs & looks good, V8, all power, \$4,000 OBO, Jesus, 661-301-0531

**(For private / non-commercial sellers: list your car, trailer, motorcycle, boat, or airplane for FREE throughout the month of April)**

### Rental Equipment

- Lebec County Water District is looking for daily, weekly, and monthly rental rates for the **Use of a backhoe** from local companies or individuals; please submit bids (661) 248-6872

### Miscellaneous

- **For Garage Sales:** After your sale, call us to come to pick up unwanted items at no fee & we will give you a tax donation receipt for our 501 Organization. 661-245-1342

## Job Offers



- The El Tejon Unified School District is accepting applications for a **Business Manager**. Please apply online at [www.edjoin.org](http://www.edjoin.org)
- PMCPOA, Inc. is currently accepting applications for **Recreation & Event Program Manager, Janitorial/Custodial, Stable Hand and Lifeguard**. Pre-employment drug screening, DMV and background check are required for all positions. For more information about these positions visit the PMCPOA website at [www.pinemountainclub.net](http://www.pinemountainclub.net). Under the “PMC Main Menu” (on the left side of the Home Page), click “The Association”, then click “Breaking News/Employment”. Under the “Business Office” heading you will find the job descriptions and a downloadable employment application. For additional information you can also call the PMCPOA Business Office at 661-242-3788
- Looking for Local (Lebec-PMC) **Contractors and Handymen** for yard clearance, lawn mowing, refuse removal, etc.; must be absolute reliable, no criminal records, valid California Driver’s license – apply at [TejonPassJobs@gmail.com](mailto:TejonPassJobs@gmail.com)
- **Medical Social Worker:** Make a lifetime difference! Join our unique team of professionals who are committed to providing compassionate hospice care to Kern County families facing a final season of life. Excellent problem solving and communication skills a must. Enjoy the flexibility and independence in a most rewarding Profession that serves others in their greatest time of need. Masters in Social Work required Bilingual Preferred Apply in person at: Hoffman Hospice, 8501 Brimhall Road; Fax resume to 661-410-1044 or e-mail to [hr@hoffmannhospice.org](mailto:hr@hoffmannhospice.org)
- CSUB #1736 - **Student Outreach Counselor** (Student Services Professional II) - FT perm. position



available in University Outreach Dept. File by: 3/28/14. Description at: <http://www.csub.edu/bas/hr/EmployRecruit/Job%20Status%20Inquiry/index.html> Use position number when applying. EOE

- Assistant Manager needed for Bakersfield auto recycler. Need good leadership & communication skills. Knowledge of auto parts & fork lift operation a +, good salary / benefits. Email resume to [mgonzales@lkqcorp.com](mailto:mgonzales@lkqcorp.com)
- The California Highway Patrol (CHP) is hiring between 4 and 6 **Dispatchers** for the Bakersfield area. Applicants should be willing to work nights, weekends, holidays, overtime and unusual hours. The duties include operating the radio, computer related equipment; dispatching appropriate personnel and resources such as officer, emergency equipment, allied agencies; screening calls from officers, public media and other allied agencies and taking appropriate action. Handling 911 calls from citizens who are difficult to communicate with (e.g., upset, abusive, intoxicated, suicidal, young/old, or speech impaired). Applications will be accepted from now till April 3, 2014. Interested applicants can log on to [www.chpcareers.com](http://www.chpcareers.com) under Public Safety Dispatcher. Completed and signed applications must be submitted to:
- California Highway Patrol, Selection Standards and Examinations Unit, P.O. Box 942898, Sacramento, Ca 94298 - Questions can be directed to Public Safety Dispatch Supervisor, April Manuel at 661-864-4444.
- Habitat for Humanity: **Office Manager/Bookkeeper**  
Habitat for Humanity is seeking a full time office manager/bookkeeper with strong bookkeeping skills. For a full job description visit: [www.habitatbakersfield.org](http://www.habitatbakersfield.org) >get involved>employment Salary: \$35,000 - \$40,000 Please email resumes to: [jobs@habitatbakersfield.org](mailto:jobs@habitatbakersfield.org)
- Stevens Transportation Inc. at 210 Fairfax Road in Bakersfield: **Drivers** Reg. Full Time Class A License w/DBL 661-366-3286

- **Newspaper Delivery** in Bakersfield - Nightly routes available in all parts of Bakersfield delivering The Bakersfield Californian. Pay ranges \$220+ per week depending on route size, terrain, and number of routes. All newspapers are picked up in Bakersfield each night for all deliveries. Need some extra income and live in Bakersfield call us today. Call Kara at 661-392-5742 to schedule an appointment today and learn about route profit information. Must bring vehicle registration, valid driver's license, social security card, and proof of insurance
- Arvin Union School District Certificated: **7th/8th Grade Special Day Class Teacher** Mild/Moderate Salary: Current Salary Schedule Application deadline: Open until Filled

####

### Important Phone Numbers

<b>Fire</b>	<b>911</b>
<b>Ambulance</b>	<b>911</b>
<b>Sheriff or CHP</b>	<b>911</b>

<b>Frazier Park Sheriff Station</b>	<b>661-245-3440</b>
<b>Frazier Park Public Utility/Water District</b>	<b>661-245-3734</b>
<b>Lebec County Water District</b>	<b>661-248-6872</b>
<b>Southern California Edison</b>	<b>800-655-4555</b>
<b>Southern California Gas</b>	<b>800-427-2200</b>
<b>Pacific Gas &amp; Electric (PGE)</b>	<b>800-743-5000</b>
<b>El Tejon Unified School District</b>	<b>661-248-6247</b>
<b>Frazier Mountain High School</b>	<b>661-248-0310</b>
<b>Frazier Park Library</b>	<b>661-245-1267</b>
<b>Pine Mountain Club Patrol</b>	<b>661-242-3857</b>
<b>Supervisor David Couch</b>	<b>661-868-3680</b>
<b>Fire Station 56 (Lebec)</b>	<b>661-248-6426</b>
<b>Fire Station 57 (Frazier Park)</b>	<b>661-245- 3706</b>
<b>Dentist Porazik, Lebec</b>	<b>661- 245-1434</b>

**The Photographer** (fires, accidents, weddings, & all other disasters)  
**661-402-2717**



National Cement Company of California, Inc.

Located 5 miles off of Hwy 138 in Lebec, National Cement's mission is to be the leader in the cement industry; operating in a safe, environmentally sound and profitable manner while being a good corporate citizen.



The Plant operates 24 hours a day, 7 days per weeks and has a workforce of approximately 120 employees who work in a variety of departments in support of operations.



The heart of the organization revolves around a people-centric philosophy where employees are our greatest asset. This being the case, the health, well-being and safety of our dedicated workforce is always our number one priority.



If you are a hard working, conscientious individual with a proven track record as a valued employee with prior cement or heavy industry experience, you are invited to email your resume to [talexis@natcem.com](mailto:talexis@natcem.com) for consideration.



*National Cement is an  
Equal Opportunity Employer*

GBU Photo

