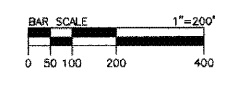
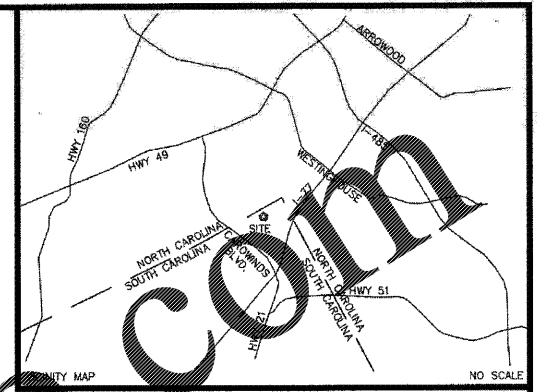
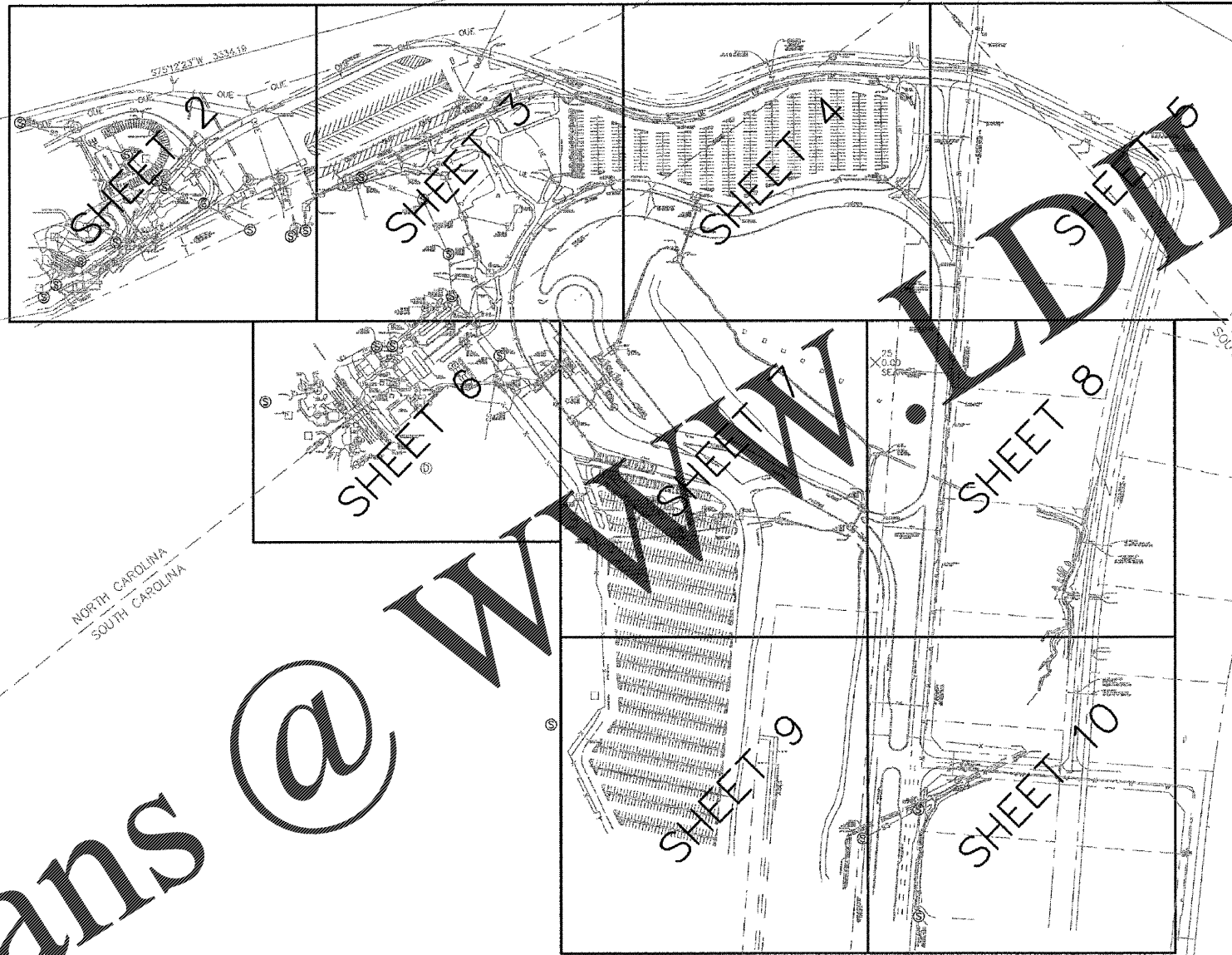


This drawing and/or the design shown are the property of ESP Associates, P.A. The reproduction, alteration, copying or other use of this drawing without their written consent is prohibited and any infringement will be subject to legal action.
ESP Associates, P.A.

- LEGEND**
- BOUNDARY LINE BY MONUMENTATION
 - INTERIOR PROPERTY LINE
 - EASEMENT LINE
 - RIGHT OF WAY LINE
 - UNDERGROUND TELEPHONE
 - HEDGE
 - TREE LINE
 - DITCH CENTERLINE
 - WATERLINE
 - FENCE
 - SANITARY SEWER LINE
 - UNDERGROUND ELECTRIC
 - UNDERGROUND GAS
 - MAJOR CONTOUR
 - MINOR CONTOUR
 - OVERHEAD ELECTRIC
 - FORCEMAIN
 - CONCRETE
 - PAVER STONE
 - ASPHALT
 - DOWNSPOUT
 - ROOF DRAIN
 - FLAG POLE
 - COLUMN
 - MONITORING WELL
 - HOSE BIB
 - FIRE DEPARTMENT CONNECTION
 - BACKFLOW PREVENTOR
 - BOLLARD
 - POST
 - ELECTRIC PANEL
 - VAULT
 - ELECTRIC VAULT
 - OUTLET BOX
 - BOULDER
 - BENCHMARK
 - GAS METER
 - FIRE HYDRANT
 - TREE
 - DROP INLET
 - CLEAN OUT
 - ELECTRIC BOX
 - IRRIGATION VALVE
 - WATER METER
 - BUSH
 - GUY WIRE
 - UTILITY POLE
 - STORM MANHOLE
 - LIGHT POLE
 - SANITARY SEWER MANHOLE
 - WATER VALVE
 - SPOT ELEVATION
 - SIGN (AS NOTED)
 - DB DEED BOOK
 - PB PLAT BOOK
 - MB MAP BOOK
 - PG PAGE
 - N/F NOW OR FORMERLY
 - TBM TEMPORARY BENCHMARK
 - HCR HANDICAP RAMP
 - H/C HANDICAP PARKING STALL
 - DI DROP INLET
 - DDI DOUBLE DROP INLET
 - CB CATCH BASIN
 - DCB DOUBLE CATCH BASIN
 - SSMH SANITARY SEWER MANHOLE
 - STMH STORM MANHOLE
 - CMP CORRUGATED METAL PIPE
 - HDPE HIGH DENSITY POLYETHYLENE
 - RCP REINFORCED CONCRETE PIPE
 - VCP VITRIFIED CLAY PIPE
 - PVC POLYVINYL CHLORIDE PIPE
 - CPP CORRUGATED PLASTIC PIPE
 - ICV IRRIGATION CONTROL VALVE
 - CM CURB MANHOLE
 - SP SPLIT RAINANCE
 - GLF GROUND LINK FENCE
 - OC OPTIC CABLE
 - W FENCE
 - M FENCE
 - LDG BUILDING



INTERSTATE I-77
MANAGED WITH PERMISSIVE TRUCKING
NO. DOT FILE # 48805 DATED JUNE 20, 1972

Order Plans @ WAWWLDLINE.com

DRAFT
DO NOT RELY ON THIS DOCUMENT

Professional seals for David A. Weirich, License No. C-0587 (North Carolina) and License No. 20193 (South Carolina).

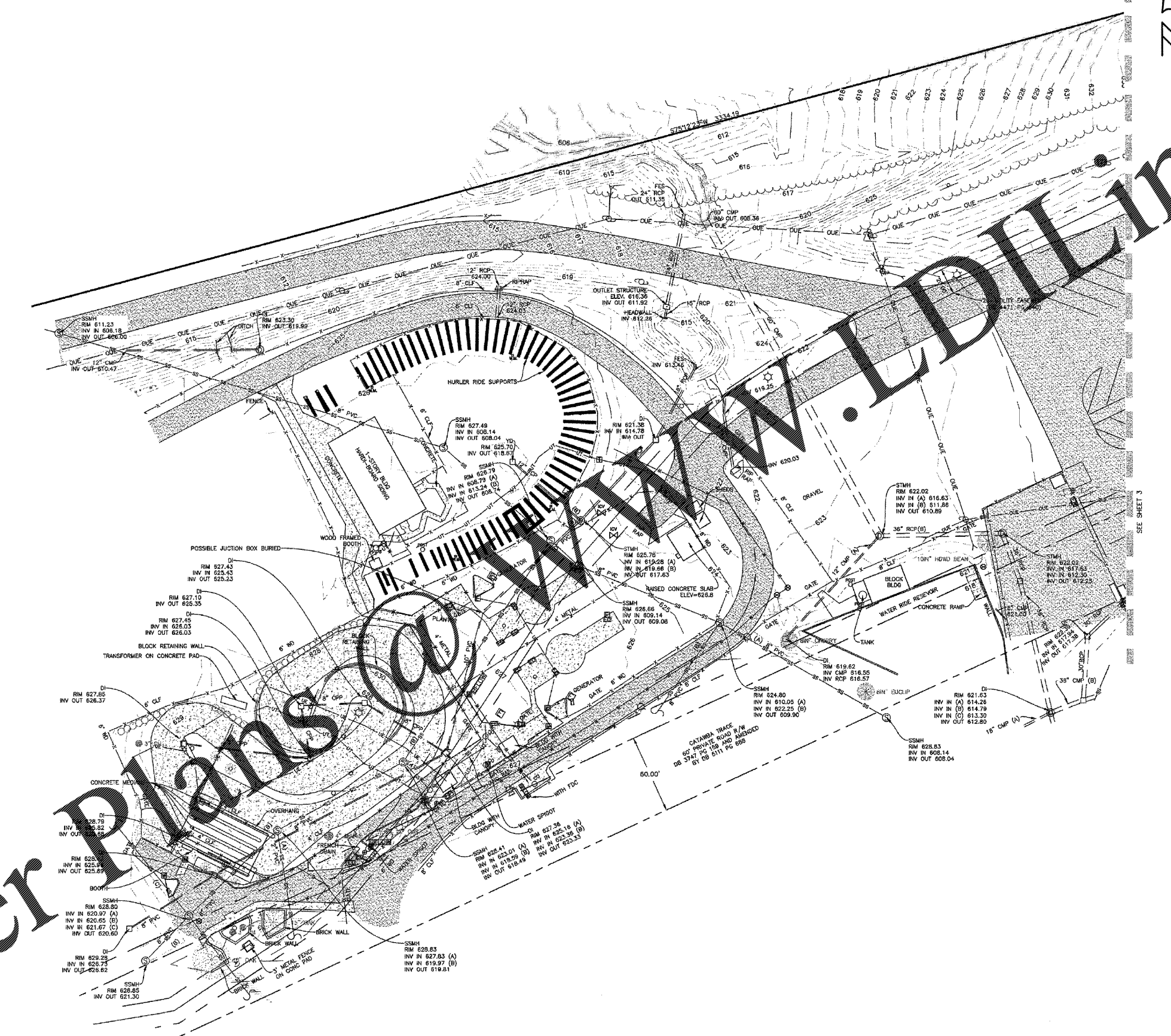
2	03/17/14	REVISED SURFACE - SEE SHEET 8 & 10	PJT
1	02/28/14	ADDITIONAL TOPO AREA - SEE SHEET 10	PJT
NO.	DATE	REVISION	BY
TOPOGRAPHIC SURVEY FOR DESIGN OF CAROWINDS - NEW RIDE 2015 KEY MAP LOCATED IN CITY OF CHARLOTTE MECKLENBURG COUNTY NORTH CAROLINA			
CAROWINDS 14523 CAROWINDS BOULEVARD CHARLOTTE, NC 28273			PROJECT NO. BR29.A00.DWG SCALE 1"=200' DATE 02/10/14 DRAWN BY ASJ/PJT CHECKED BY SHJ DATE OF SURVEY: JULY 2013 - JANUARY 2014 DRAWING NO. BR29 AREA 4 n 5 ADD.DWG
1 of 10 sheets			

ESP
 ESP Associates, P.A.
 P.O. Box 7030 3475 Lakemont Blvd.
 Charlotte, NC 28241 Fort Mill, SC 29708
 704-583-4949 (NC)
 803-802-2440 (SC)
 www.espassociates.com

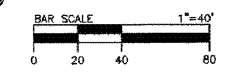
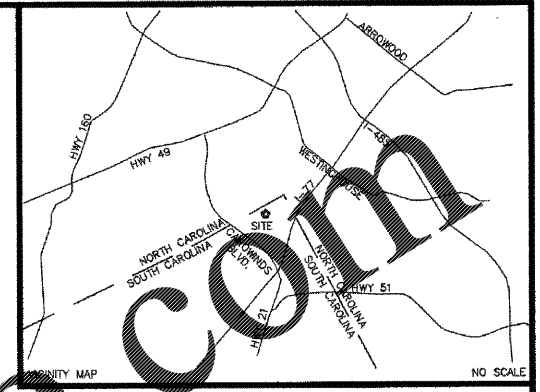
This drawing and/or the design shown are the property of ESP Associates, P.A. The reproduction, alteration, copying or other use of this drawing without their written consent is prohibited and any infringement will be subject to legal action.
 ESP Associates, P.A.

- LEGEND**
- BOUNDARY LINE BY MONUMENTATION
 - INTERIOR PROPERTY LINE
 - EASEMENT LINE
 - RIGHT OF WAY LINE
 - UNDERGROUND TELEPHONE
 - HEDGE
 - TREE LINE
 - DITCH CENTERLINE
 - WATERLINE
 - FENCE
 - SANITARY SEWER LINE
 - UNDERGROUND ELECTRIC
 - UNDERGROUND GAS
 - MAJOR CONTOUR
 - MINOR CONTOUR
 - OVERHEAD ELECTRIC
 - FORCEMAIN

- CONCRETE
- PAVER STONE
- ASPHALT
- DOWNSPOUT
- ROOF DRAIN
- FLAG POLE
- COLUMN
- MONITORING WELL
- HOSE BIB
- FIRE DEPARTMENT CONNECTION
- BACKFLOW PREVENTOR
- BOLLARD
- POST
- ELECTRIC PANEL
- VAULT
- ELECTRIC VAULT
- OUTLET BOX
- BOULDER
- BENCHMARK
- GAS METER
- FIRE HYDRANT
- TREE
- DROP INLET
- CLEAN OUT
- ELECTRIC BOX
- IRRIGATION VALVE
- WATER METER
- BUSH
- GUY WIRE
- UTILITY POLE
- STORM MANHOLE
- LIGHT POLE
- SANITARY SEWER MANHOLE
- WATER VALVE
- SPOT ELEVATION
- SIGN (AS NOTED)
- DB DEED BOOK
- PB PLAT BOOK
- MB MAP BOOK
- PG PAGE
- N/F NOW OR FORMERLY
- TBM TEMPORARY BENCHMARK
- HCR HANDICAP RAMP
- H/C HANDICAP PARKING STALL
- DI DROP INLET
- DDI DOUBLE DROP INLET
- CB CATCH BASIN
- DCB DOUBLE CATCH BASIN
- SSMH SANITARY SEWER MANHOLE
- STMH STORM MANHOLE
- CMP CORRUGATED METAL PIPE
- HDPE HIGH DENSITY POLYETHYLENE
- RCP REINFORCED CONCRETE PIPE
- VCP VITRIFIED CLAY PIPE
- PVC POLYVINYL CHLORIDE
- CPP CORRUGATED PLASTIC PIPE
- ICV IRRIGATION CONTROL VALVE
- CH CREPE WATTLE
- SRP SPLIT RAIN PIPE
- CLF CHAIN LINK FENCE
- OC OPTIC CABLE
- WF WOOD FENCE
- MTL METAL FENCE
- BLDG BUILDING



NORTH ORIENTED TO
 SCS SECS (10/08/2011)



NOTES
 HORIZONTAL AND VERTICAL DATUM ESTABLISHED WITH GPS SURVEY USING NORTH CAROLINA VRS NETWORK SYSTEM AND LOCALIZED ON PK NAIL FOUND AT THE LAST REPORTED LOCATION OF NCGS MONUMENT "HARLEE".
 LATITUDE: 35°08'18.44"
 LONGITUDE: 78°06'18.42"
 HORIZONTAL DATUM HAS BEEN TRANSLATED TO SOUTH CAROLINA STATE PLANE COORDINATE SYSTEM (NAD83/2011)
 VERTICAL DATUM IS NAVD 88.
 FIELD WORK COMPLETED JANUARY, 2014.
 1 FOOT CONTOURS.
 UNDERGROUND UTILITIES BASED ON FIELD SURVEYED PIN FLAGS AND/OR PAINT MARKS PLACED BY OTHERS.

Order Plans

WWW.ALDLINE.COM

DRAFT

DO NOT RELY ON THIS DOCUMENT

2 of 10

ESP Associates, P.A.
 P.O. Box 7080 3475 Lakemont Blvd.
 Charlotte, NC 28241 Fort Mill, SC 29708
 704-583-4948 (NC)
 803-802-2440 (SC)
 www.espassociates.com

NO.	DATE	REVISION	BY
2	03/17/14	REVISED SURFACE - SEE SHEET 8 & 10	PJT
1	02/28/14	ADDITIONAL TOPO AREA - SEE SHEET 10	PJT

TOPOGRAPHIC SURVEY FOR DESIGN OF CAROWINDS NEW RIDE - 2015

LOCATED IN TOWN OF FORT MILL
 YORK COUNTY
 SOUTH CAROLINA

CLIENT: **CAROWINDS**
 14523 CAROWINDS BOULEVARD
 CHARLOTTE, NC 28273

PROJECT NO: BR29-0000 & BR29-0000
 SCALE: 1"=40'
 DATE: 02/10/14
 DRAWN BY: J.K. PJT
 CHECKED BY: S.H.
 DATE OF SURVEY: JUNE 2013 - JANUARY 2014
 DRAWING NO: BR29 AREA 4 n 5.DWG

2 of 10 SH

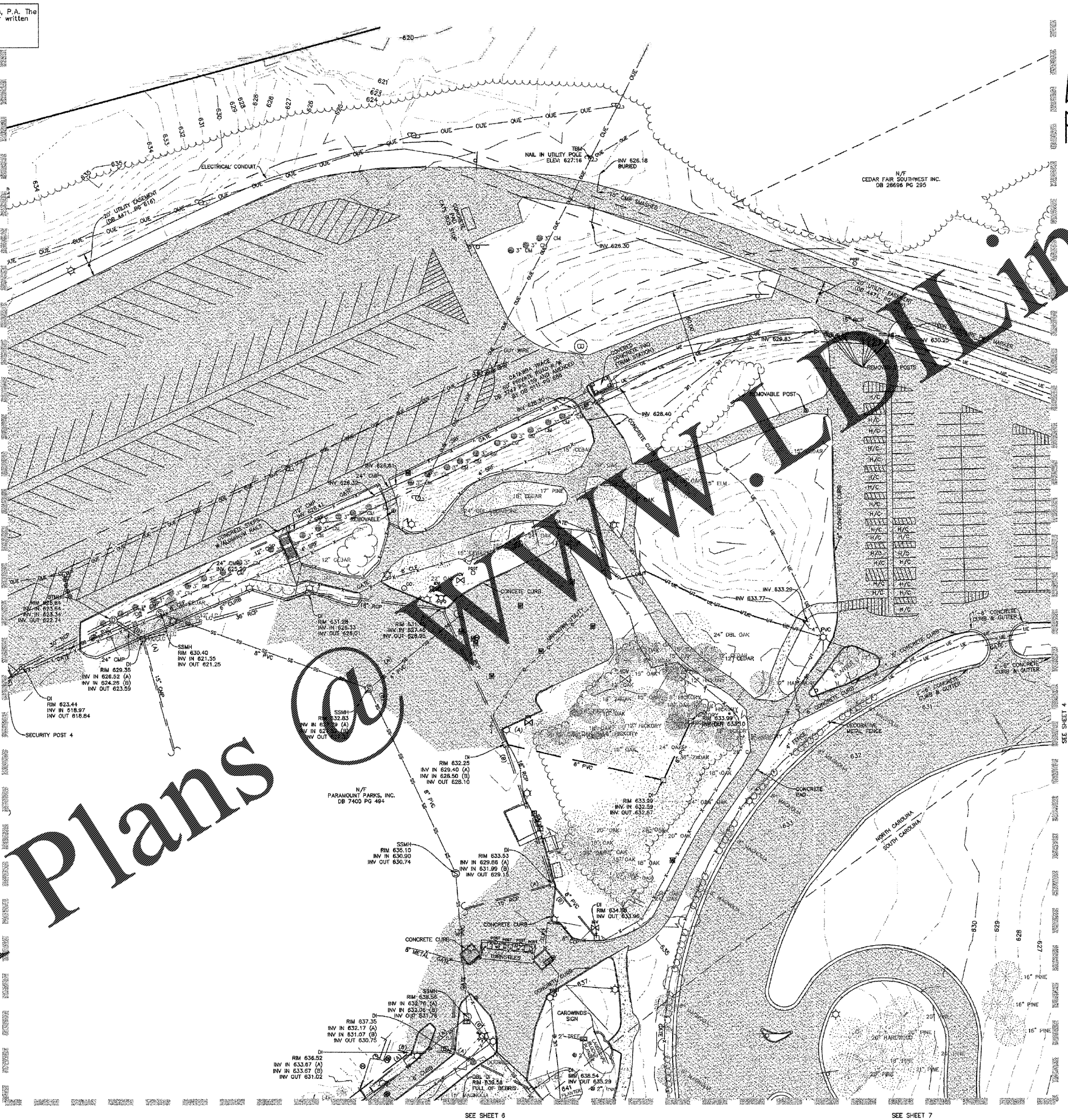
This drawing and/or the design shown are the property of ESP Associates, P.A. The reproduction, alteration, copying or other use of this drawing without their written consent is prohibited and any infringement will be subject to legal action.
 ESP Associates, P.A.

- LEGEND**
- BOUNDARY LINE BY MONUMENTATION
 - INTERIOR PROPERTY LINE
 - EASEMENT LINE
 - RIGHT OF WAY LINE
 - UNDERGROUND TELEPHONE
 - HEDGE
 - TREE LINE
 - DITCH CENTERLINE
 - WATERLINE
 - FENCE
 - SANITARY SEWER LINE
 - UNDERGROUND ELECTRIC
 - UNDERGROUND GAS
 - MAJOR CONTOUR
 - MINOR CONTOUR
 - OVERHEAD ELECTRIC
 - FORCEMAIN
 - CONCRETE
 - PAVER STONE
 - ASPHALT
 - DOWNSPOUT
 - ROOF DRAIN
 - FLAG POLE
 - COLUMN
 - MONITORING WELL
 - HOSE BIB
 - FIRE DEPARTMENT CONNECTION
 - BACKFLOW PREVENTOR
 - BOLLARD
 - POST
 - ELECTRIC PANEL
 - VAULT
 - ELECTRIC VAULT
 - OUTLET BOX
 - BOULDER
 - BENCHMARK
 - GAS METER
 - FIRE HYDRANT
 - TREE
 - DROP INLET
 - CLEAN OUT
 - ELECTRIC BOX
 - IRRIGATION VALVE
 - WATER METER
 - BUSH
 - GUY WIRE
 - UTILITY POLE
 - STORM MANHOLE
 - LIGHT POLE
 - SANITARY SEWER MANHOLE
 - WATER VALVE
 - SPOT ELEVATION
 - SIGN (AS NOTED)
 - DEED BOOK
 - PLAT BOOK
 - MAP BOOK
 - PAGE
 - N/F NOW OR FORMERLY
 - TBM TEMPORARY BENCHMARK
 - HCR HANDICAP RAMP
 - H/C HANDICAP PARKING STALL
 - DI DROP INLET
 - DDI DOUBLE DROP INLET
 - CB CATCH BASIN
 - DCB DOUBLE CATCH BASIN
 - SSMH SANITARY SEWER MANHOLE
 - STMH STORM MANHOLE
 - CMP CORRUGATED METAL PIPE
 - HDPE HIGH DENSITY POLYETHYLENE
 - RCP REINFORCED CONCRETE PIPE
 - VCP VITRIFIED CLAY PIPE
 - PVC POLYVINYL CHLORIDE
 - CPP CORRUGATED PLASTIC PIPE
 - ICV INVERT CONTROL VALVE
 - CRP CREPE TILE
 - SRP SPLIT RAIN PIPE
 - CLF CHAIN LINK FENCE
 - OC OPTIC CABLE
 - W/F WOOD FENCE
 - MTL METAL FENCE
 - BLDG BUILDING

SEE SHEET 2

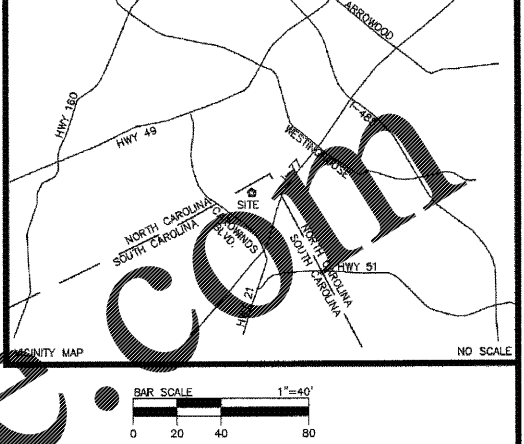
Order Plans

ESP Associates, P.A.
 P.O. Box 7030 3475 Lakemont Blvd.
 Charlotte, NC 28241 Fort Mill, SC 29708
 704-583-4949 (NC)
 803-802-2440 (SC)
 www.espassociates.com



SEE SHEET 6

SEE SHEET 7



NOTES

HORIZONTAL AND VERTICAL DATUM ESTABLISHED WITH GPS SURVEY USING NORTH CAROLINA VRS NETWORK SYSTEM AND LOCALIZED ON PK NAIL FOUND AT THE LAST REPORTED LOCATION OF NCDS MONUMENT "HARLEE".
 LATITUDE: N35°08'18.44"
 LONGITUDE: W80°56'18.42"

HORIZONTAL DATUM HAS BEEN TRANSLATED TO SOUTH CAROLINA STATE PLANE COORDINATE SYSTEM (NAD83/2011)
 VERTICAL DATUM IS NAVD 83.

FIELD WORK COMPLETED JANUARY, 2014.

1 FOOT CONTOURS.

UNDERGROUND UTILITIES BASED ON FIELD SURVEYED PIN FLAGS AND/OR PAINT MARKS PLACED BY OTHERS.

DRAFT

ESP ASSOCIATES, P.A. LICENSE NO. C-0587

ESP ASSOCIATES, P.A. LICENSE NO. C-0587

ESP ASSOCIATES, P.A. LICENSE NO. C-0587

ESP ASSOCIATES, P.A. LICENSE NO. C-0587

3 of 10

NO.	DATE	REVISION	BY
2	03/17/14	REVISED SURFACE - SEE SHEET 8 & 10	PJT
1	02/28/14	ADDITIONAL TOPO AREA - SEE SHEET 10	PJT

TOPOGRAPHIC SURVEY FOR DESIGN OF CAROWINDS - NEW RIDE 2015

PROJECT NO: 2013-00200 & 2013-00200
 SCALE: 1"=40'
 DATE: 02/10/14
 DRAWN BY: [Signature]
 CHECKED BY: [Signature]
 DATE OF SURVEY: JUNE 2013 - JANUARY 2014
 DRAWING NO: BR29 AREA 4 n S.DWG

LOCATED IN TOWN OF FORT MILL
 YORK COUNTY
 SOUTH CAROLINA

CLIENT: **CAROWINDS**
 14523 CAROWINDS BOULEVARD
 CHARLOTTE, NC 28273

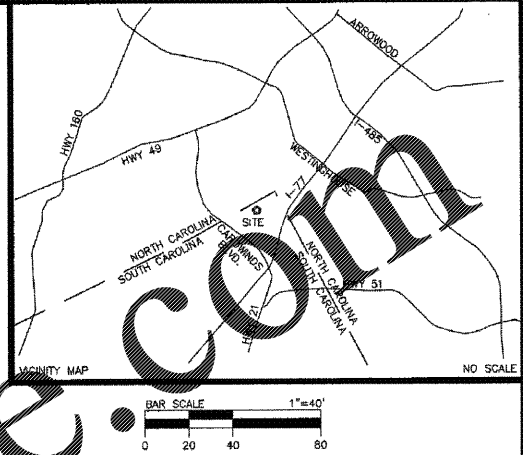
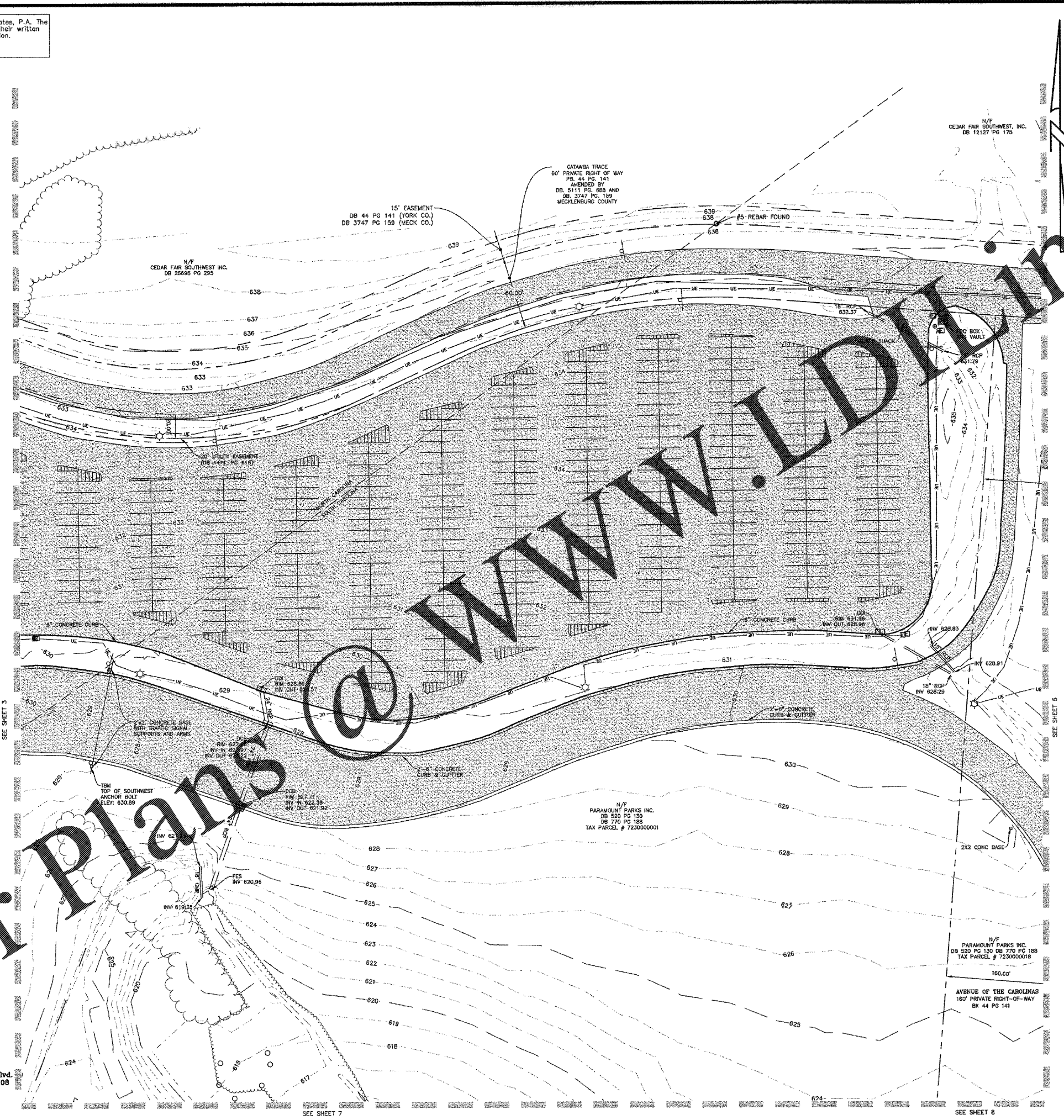
3 of 10

This drawing and/or the design shown are the property of ESP Associates, P.A. The reproduction, alteration, copying or other use of this drawing without their written consent is prohibited and any infringement will be subject to legal action.

ESP Associates, P.A.

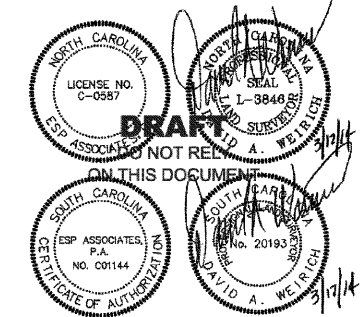
LEGEND

- BOUNDARY LINE BY MONUMENTATION
- INTERIOR PROPERTY LINE
- EASEMENT LINE
- RIGHT OF WAY LINE
- UNDERGROUND TELEPHONE
- HEDGE
- TREE LINE
- DITCH CENTERLINE
- WATERLINE
- FENCE
- SANITARY SEWER LINE
- UNDERGROUND ELECTRIC
- UNDERGROUND GAS
- MAJOR CONTOUR
- MINOR CONTOUR
- OVERHEAD ELECTRIC
- FORCEMAIN
- CONCRETE
- PAVER STONE
- ASPHALT
- DOWNSPOUT
- ROOF DRAIN
- FLAG POLE
- COLUMN
- MONITORING WELL
- HOSE BIB
- FIRE DEPARTMENT CONNECTION
- BACKFLOW PREVENTOR
- BOLLARD
- POST
- ELECTRIC PANEL
- VAULT
- ELECTRIC VAULT
- OUTLET BOX
- BOULDER
- BENCHMARK
- GAS METER
- FIRE HYDRANT
- TREE
- DROP INLET
- CLEAN OUT
- ELECTRIC BOX
- IRRIGATION VALVE
- WATER METER
- BUSH
- GUY WIRE
- UTILITY POLE
- STORM MANHOLE
- LIGHT POLE
- SANITARY SEWER MANHOLE
- WATER VALVE
- SPOT ELEVATION
- SIGN (AS NOTED)
- DB DEED BOOK
- PB PLAT BOOK
- MB MAP BOOK
- PG PAGE
- N/F NOW OR FORMERLY
- TBM TEMPORARY BENCHMARK
- HGR HANDICAP RAMP
- H/C HANDICAP PARKING STALL
- DI DROP INLET
- DDI DOUBLE DROP INLET
- CB CATCH BASIN
- DCB DOUBLE CATCH BASIN
- SSMH SANITARY SEWER MANHOLE
- STMH STORM MANHOLE
- CMP CORRUGATED METAL PIPE
- HDPE HIGH DENSITY POLYETHYLENE
- RCP REINFORCED CONCRETE PIPE
- VCP VITRIFIED CLAY PIPE
- PVC POLYVINYL CHLORIDE PIPE
- CPP CORRUGATED PLASTIC PIPE
- ICV IRRIGATION CONTROL VALVE
- CM CURB MOUNTED
- SRF SPLIT RAIL FENCE
- ULF UPRIGHT LINK FENCE
- FC FIBER OPTIC CABLE
- W FENCE
- METAL FENCE
- DO BUILDING



HORIZONTAL AND VERTICAL DATUM ESTABLISHED WITH GPS SURVEY USING NORTH CAROLINA VRS NETWORK SYSTEM AND LOCALIZED ON PK NAIL FOUND AT THE LAST REPORTED LOCATION OF NCSS MONUMENT 'HARLEE'.
 LATITUDE: N35°06'18.44"
 LONGITUDE: W80°56'18.42"
 HORIZONTAL DATUM HAS BEEN TRANSLATED TO SOUTH CAROLINA STATE PLANE COORDINATE SYSTEM (NAD83/2011)
 VERTICAL DATUM IS NAVD 88.
 FIELD WORK COMPLETED JANUARY, 2014.
 1 FOOT CONTOURS.
 UNDERGROUND UTILITIES BASED ON FIELD SURVEYED PIN FLAGS AND/OR PAINT MARKS PLACED BY OTHERS.

Order Plans



NO.	DATE	REVISION	BY
2	03/17/14	REVISED SURFACE - SEE SHEET 8 & 10	PJT
1	02/28/14	ADDITIONAL TOPO AREA - SEE SHEET 10	PJT

TOPOGRAPHIC SURVEY FOR DESIGN OF CAROWINDS - NEW RIDE 2015		PROJECT NO. 8130-000-000 & BR28-000-000
LOCATED IN TOWN OF FORT MILL YORK COUNTY SOUTH CAROLINA		SCALE 1"=40'
CLIENT: CAROWINDS		DRAWN BY LK, PJT
14523 CAROWINDS BOULEVARD CHARLOTTE, NC 28273		DATE OF SURVEY JUNE 2013 - JANUARY 2014
4 of 10		DRAWING NO. BR28 AREA 4 n. 5.DWG

ESP Associates, P.A.
 P.O. Box 7090 3475 Lakemont Blvd
 Charlotte, NC 28241 Fort Mill, SC 29708
 704-583-4949 (NC)
 803-802-2440 (SC)
 www.espassociates.com

This drawing and/or the design shown are the property of ESP Associates, P.A. The reproduction, alteration, copying or other use of this drawing without their written consent is prohibited and any infringement will be subject to legal action.

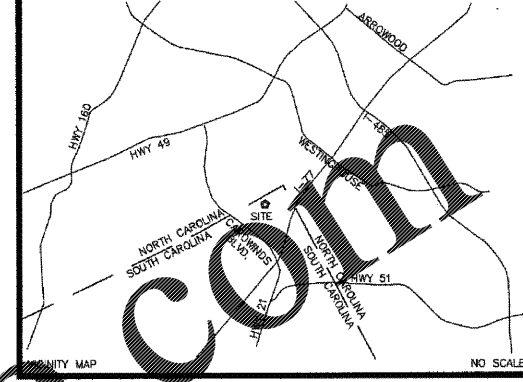
ESP Associates, P.A.

LEGEND

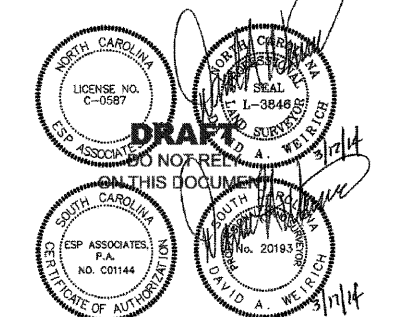
- BOUNDARY LINE BY MONUMENTATION
- INTERIOR PROPERTY LINE
- EASEMENT LINE
- RIGHT OF WAY LINE
- UNDERGROUND TELEPHONE
- HEDGE
- TREE LINE
- DITCH CENTERLINE
- WATERLINE
- FENCE
- SANITARY SEWER LINE
- UNDERGROUND ELECTRIC
- UNDERGROUND GAS
- MAJOR CONTOUR
- MINOR CONTOUR
- OVERHEAD ELECTRIC
- FORCEMAIN

- CONCRETE
- PAVER STONE
- ASPHALT

- DOWNSPOUT
- ROOF DRAIN
- FLAG POLE
- COLUMN
- MONITORING WELL
- HOSE BIG
- FIRE DEPARTMENT CONNECTION
- BACKFLOW PREVENTOR
- BOLLARD
- POST
- ELECTRIC PANEL
- VAULT
- ELECTRIC VAULT
- OUTLET BOX
- BOULDER
- BENCHMARK
- GAS METER
- FIRE HYDRANT
- TREE
- DROP INLET
- CLEAN OUT
- ELECTRIC BOX
- IRRIGATION VALVE
- WATER METER
- BUSH
- GUY WIRE
- UTILITY POLE
- STORM MANHOLE
- LIGHT POLE
- SANITARY SEWER MANHOLE
- WATER VALVE
- SPOT ELEVATION
- SIGN (AS NOTED)
- DB DEED BOOK
- PB PLAT BOOK
- MB MAP BOOK
- PG PAGE
- N/F NOW OR FORMERLY
- TBM TEMPORARY BENCHMARK
- HCR HANDICAP RAMP
- H/C HANDICAP PARKING STALL
- DI DROP INLET
- DDI DOUBLE DROP INLET
- CB CATCH BASIN
- DCB DOUBLE CATCH BASIN
- SSMH SANITARY SEWER MANHOLE
- STMH STORM MANHOLE
- CMP CORRUGATED METAL PIPE
- HDPE HIGH DENSITY POLYETHYLENE
- ROP REINFORCED CONCRETE PIPE
- VCP VITRIFIED CLAY PIPE
- PVC POLYVINYL CHLORIDE PIPE
- CPP CORRUGATED PLASTIC PIPE
- ICV IRRIGATION CONTROL VALVE
- SM SWIRE MANHOLE
- SPUT SPLIT RAFFINANCE
- CLF CHAIN LINK FENCE
- OC OPTIC CABLE
- MU METAL FENCE
- LG BUILDING



HORIZONTAL AND VERTICAL DATUM ESTABLISHED WITH GPS SURVEY USING NORTH CAROLINA VRS NETWORK SYSTEM AND LOCALIZED ON PK NAIL FOUND AT THE LAST REPORTED LOCATION OF NCGS MONUMENT "HARLEE".
 LATITUDE: N33°58'18.44"
 LONGITUDE: W80°56'18.42"
 HORIZONTAL DATUM HAS BEEN TRANSLATED TO SOUTH CAROLINA STATE PLANE COORDINATE SYSTEM (NAD83/2011)
 VERTICAL DATUM IS NAVD 88.
 FIELD WORK COMPLETED JANUARY, 2014.
 1 FOOT CONTOURS.
 UNDERGROUND UTILITIES BASED ON FIELD SURVEYED PIN FLAGS AND/OR PAINT MARKS PLACED BY OTHERS.



NO.	DATE	REVISION	BY
2	03/17/14	REVISED SURFACE - SEE SHEET 8 & 10	PJT
1	02/28/14	ADDITIONAL TOPO AREA - SEE SHEET 10	PJT

TOPOGRAPHIC SURVEY FOR DESIGN OF CAROWINDS - NEW RIDE 2015		PROJECT NO. 80000000 & 80000000
LOCATED IN TOWN OF FORT MILL, YORK COUNTY, SOUTH CAROLINA		SCALE 1"=40' DATE 02/10/14
CLIENT: CAROWINDS 14523 CAROWINDS BOULEVARD CHARLOTTE, NC 28273		DRAWN BY LK PJT CHECKED BY SLJ DATE OF SURVEY JUNE 2013 - JANUARY 2014 DRAWING NO. BR29 AREA 4 n 5.DWG

Order Plans

ESP
 ESP Associates, P.A.
 P.O. Box 7030 3475 Lakemont Blvd.
 Charlotte, NC 28241 Fort Mill, SC 29708
 704-583-4949 (NC)
 803-802-2440 (SC)
 www.espassociates.com

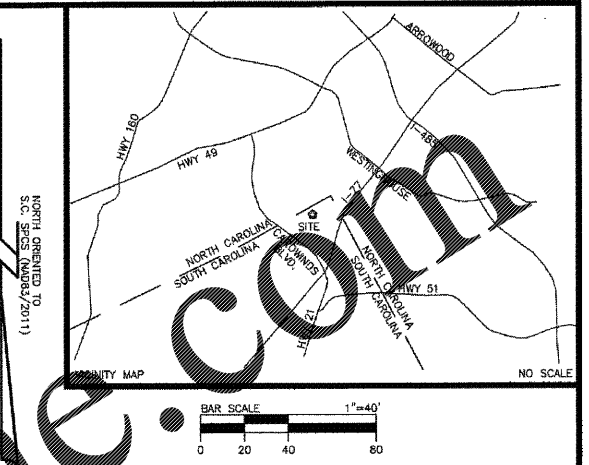
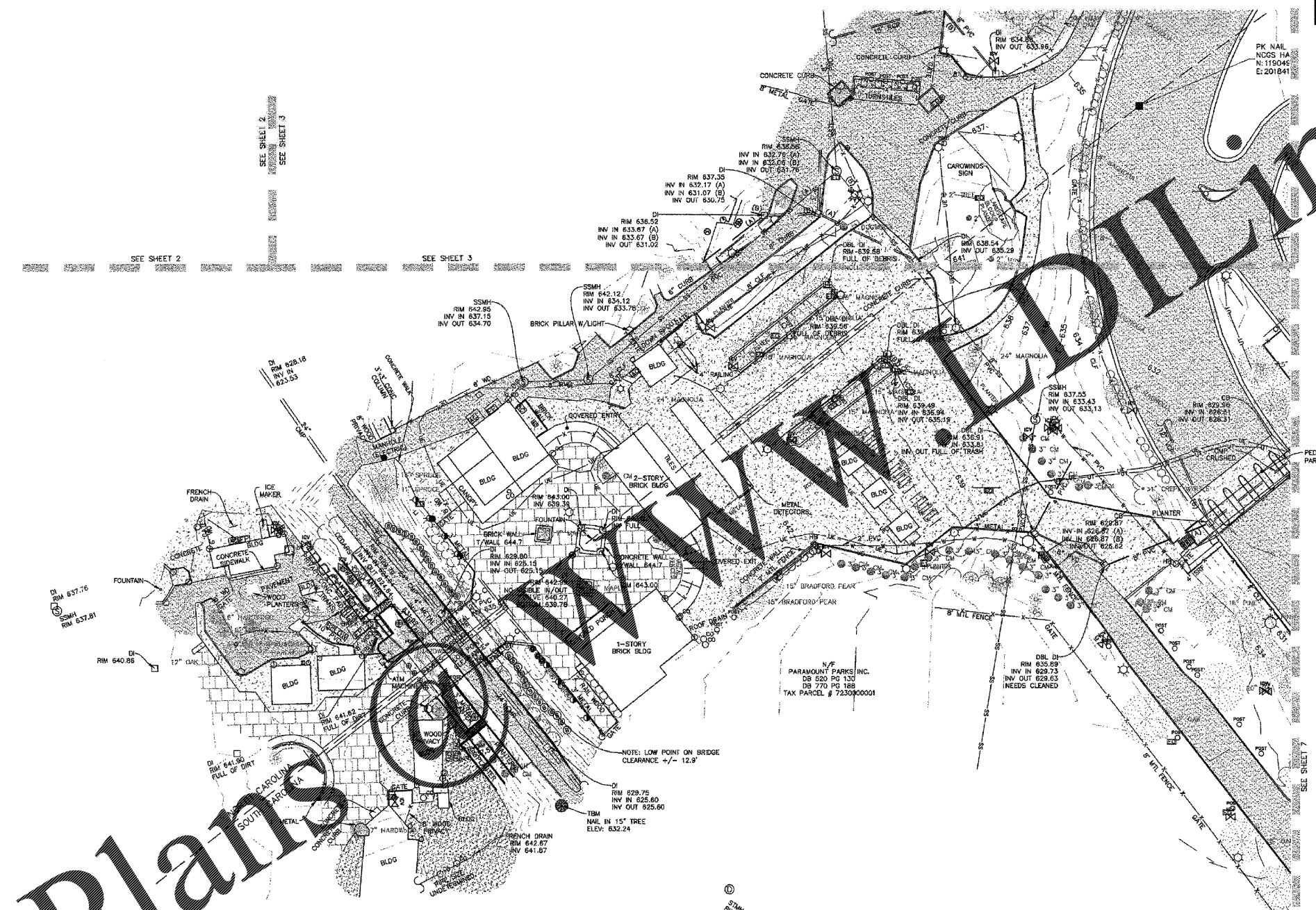
SEE SHEET 8

5 of 10

5 of 10 SHEET

This drawing and/or the design shown are the property of ESP Associates, P.A. The reproduction, alteration, copying or other use of this drawing without their written consent is prohibited and any infringement will be subject to legal action.
ESP Associates, P.A.

- LEGEND**
- BOUNDARY LINE BY MONUMENTATION
 - INTERIOR PROPERTY LINE
 - EASEMENT LINE
 - RIGHT OF WAY LINE
 - UNDERGROUND TELEPHONE
 - HEDGE
 - TREE LINE
 - DITCH CENTERLINE
 - WATERLINE
 - FENCE
 - SANITARY SEWER LINE
 - UNDERGROUND ELECTRIC
 - UNDERGROUND GAS
 - MAJOR CONTOUR
 - MINOR CONTOUR
 - OVERHEAD ELECTRIC
 - FORCEMAIN
 - CONCRETE
 - PAVER STONE
 - ASPHALT
 - DOWNSPOUT
 - ROOF DRAIN
 - FLAG POLE
 - COLUMN
 - MONITORING WELL
 - HOSE BIB
 - FIRE DEPARTMENT CONNECTION
 - BACKFLOW PREVENTOR
 - BOLLARD
 - POST
 - ELECTRIC PANEL
 - VAULT
 - ELECTRIC VAULT
 - OUTLET BOX
 - BOULDER
 - BENCHMARK
 - GAS METER
 - FIRE HYDRANT
 - TREE
 - DROP INLET
 - CLEAN OUT
 - ELECTRIC BOX
 - IRRIGATION VALVE
 - WATER METER
 - BUSH
 - GLY WIRE
 - UTILITY POLE
 - STORM MANHOLE
 - LIGHT POLE
 - SANITARY SEWER MANHOLE
 - WATER VALVE
 - SPOT ELEVATION
 - SIGN (AS NOTED)
 - DEED BOOK
 - PLAT BOOK
 - MAP BOOK
 - PAGE
 - N/F OR FORMERLY
 - TEMPORARY BENCHMARK
 - H/CR HANDICAP RAMP
 - H/C HANDICAP PARKING STALL
 - DI DROP INLET
 - DOI DOUBLE DROP INLET
 - CB CATCH BASIN
 - DCB DOUBLE CATCH BASIN
 - SSMH SANITARY SEWER MANHOLE
 - STMH STORM MANHOLE
 - CMP CORRUGATED METAL PIPE
 - HDPE HIGH DENSITY POLYETHYLENE
 - ROP REINFORCED CONCRETE PIPE
 - VCP VITRIFIED CLAY PIPE
 - PVC POLYVINYL CHLORIDE PIPE
 - CPP CORRUGATED PLASTIC PIPE
 - ICV IRRIGATION CONTROL VALVE
 - CM CREPE BUSTLE
 - SRV SPLIT RAINFALL
 - CLF CHAIN LINK FENCE
 - DOC DRAIN OPTIC CABLE
 - W FENCE
 - ML METAL FENCE
 - BLDG BUILDING



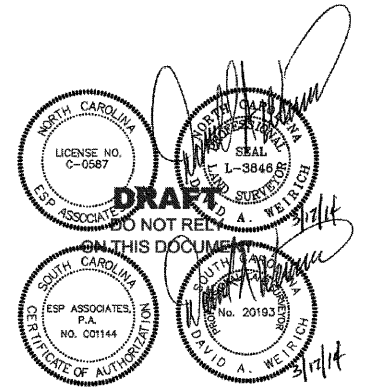
HORIZONTAL AND VERTICAL DATUM ESTABLISHED WITH GPS SURVEY USING NORTH CAROLINA VRS NETWORK SYSTEM AND LOCALIZED ON PK NAIL FOUND AT THE LAST REPORTED LOCATION OF NGCS MONUMENT "HARLEE".
LATITUDE: 35°06'18.44"
LONGITUDE: W80°56'18.42"

HORIZONTAL DATUM HAS BEEN TRANSLATED TO SOUTH CAROLINA STATE PLANE COORDINATE SYSTEM (NAD83/2011)
VERTICAL DATUM IS NAVD 88.

FIELD WORK COMPLETED JANUARY, 2014.

1 FOOT CONTOURS.

UNDERGROUND UTILITIES BASED ON FIELD SURVEYED PIN FLAGS AND/OR PAINT MARKS PLACED BY OTHERS.



NO.	DATE	REVISION	BY
2	03/17/14	REVISED SURFACE - SEE SHEET 8 & 10	PJT
1	02/28/14	ADDITIONAL TOPO AREA - SEE SHEET 10	PJT

PROJECT NO.
892,000.00 & 892,000.00

DATE
02/10/14

LOCATED IN TOWN OF FORT MILL, YORK COUNTY, SOUTH CAROLINA

CLIENT: **CAROWINDS**

14523 CAROWINDS BOULEVARD
CHARLOTTE, NC 28273

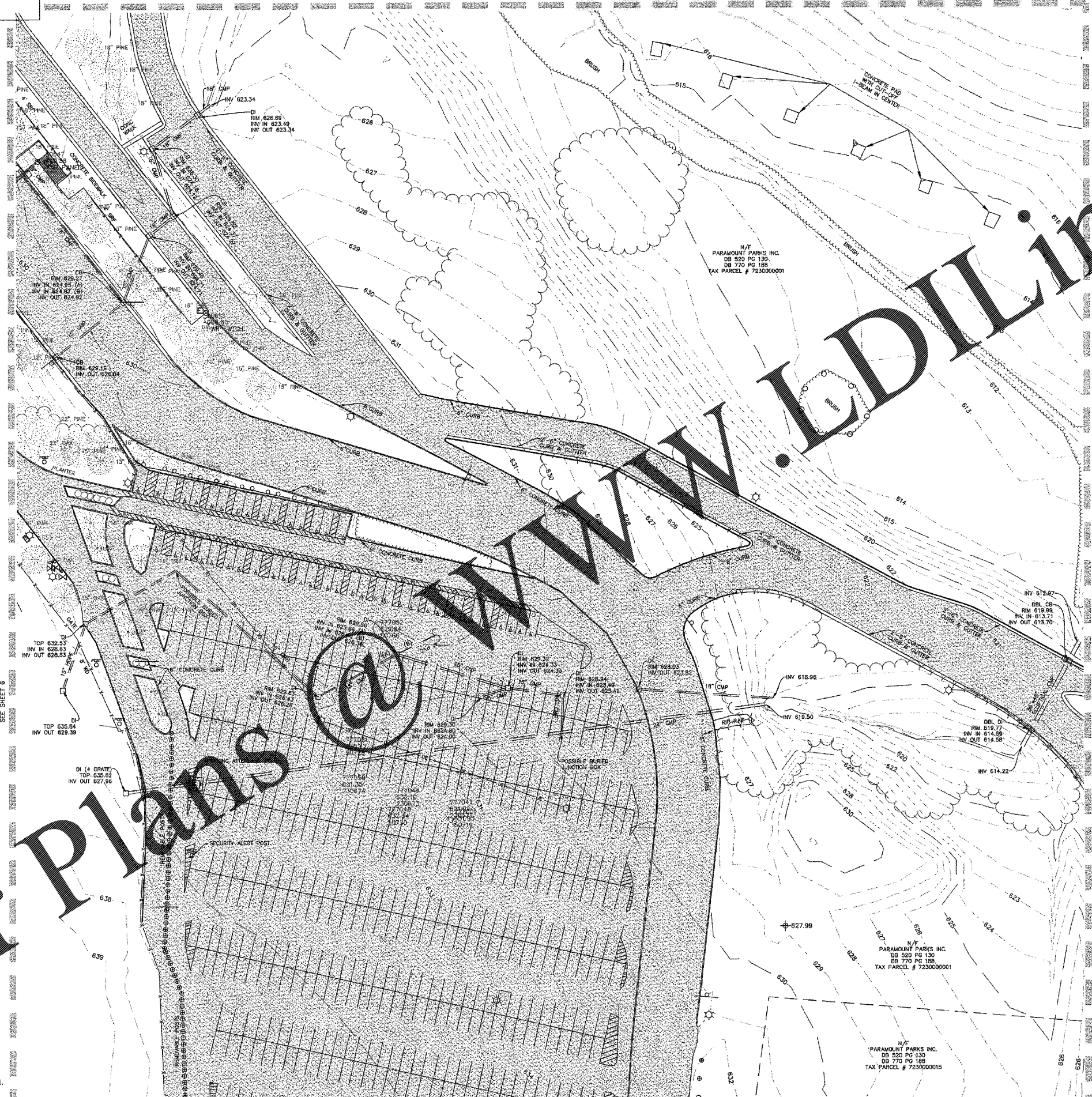
BR29 AREA
4 n 5.DWG

6 of 10

ESP Associates, P.A.
P.O. Box 7030 3475 Lakemont Blvd.
Charlotte, NC 28241 Fort Mill, SC 29708
704-583-4949 (NC)
803-802-2440 (SC)
www.espassociates.com

This drawing and/or the design shown are the property of ESP Associates, P.A. The reproduction, alteration, copying or other use of this drawing without their written consent is prohibited and any infringement will be subject to legal action.
 ESP Associates, P.A.

- LEGEND**
- BOUNDARY LINE BY MONUMENTATION
 - INTERIOR PROPERTY LINE
 - EASEMENT LINE
 - RIGHT OF WAY LINE
 - UNDERGROUND TELEPHONE
 - HEDGE
 - TREE LINE
 - DITCH CENTERLINE
 - WATERLINE
 - FENCE
 - SANITARY SEWER LINE
 - UNDERGROUND ELECTRIC
 - UNDERGROUND GAS
 - MAJOR CONTOUR
 - MINOR CONTOUR
 - OVERHEAD ELECTRIC
 - FORCEMAIN
 - CONCRETE
 - PAVER STONE
 - ASPHALT
 - DOWNSPOUT
 - ROOF DRAIN
 - FLAG POLE
 - COLUMN
 - MONITORING WELL
 - HOSE BIB
 - FIRE DEPARTMENT CONNECTION
 - BACKFLOW PREVENTOR
 - BOLLARD
 - POST
 - ELECTRIC PANEL
 - VAULT
 - ELECTRIC VAULT
 - OUTLET BOX
 - BOULDER
 - BENCHMARK
 - GAS METER
 - FIRE HYDRANT
 - TREE
 - DROP INLET
 - CLEAN OUT
 - ELECTRIC BOX
 - IRRIGATION VALVE
 - WATER METER
 - BUSH
 - GUY WIRE
 - UTILITY POLE
 - STORM MANHOLE
 - LIGHT POLE
 - SANITARY SEWER MANHOLE
 - WATER VALVE
 - SPOT ELEVATION
 - SIGN (AS NOTED)
 - DEED BOOK
 - PLAT BOOK
 - MAP BOOK
 - PAGE
 - N/T NOW OR FORMERLY
 - TBM TEMPORARY BENCHMARK
 - HCR HANDICAP RAMP
 - H/C HANDICAP PARKING STALL
 - DI DROP INLET
 - DDI DOUBLE DROP INLET
 - CB CATCH BASIN
 - DCB DOUBLE CATCH BASIN
 - SSMH SANITARY SEWER MANHOLE
 - STMH STORM MANHOLE
 - CMP CORRUGATED METAL PIPE
 - HDPE HIGH DENSITY POLYETHYLENE
 - RCP REINFORCED CONCRETE PIPE
 - VCP VITRIFIED CLAY PIPE
 - PVC POLYVINYL CHLORIDE
 - CPP CORRUGATED PLASTIC PIPE
 - ICV IRRIGATION CONTROL VALVE
 - CM CURB
 - SRT SPLIT RAIL FENCE
 - FL FLEXIBLE LINK FENCE
 - OC OPTIC CABLE
 - WF WOOD FENCE
 - MF METAL FENCE
 - BG BUILDING

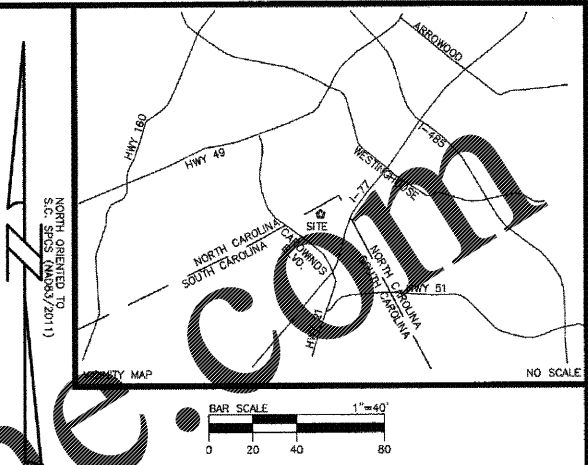


Order Plans

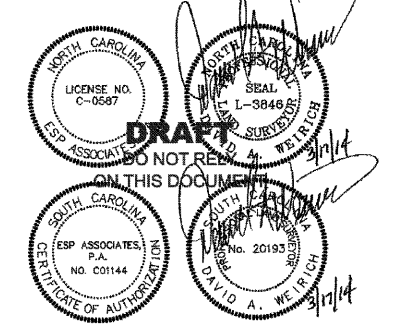
ESP Associates, P.A.
 P.O. Box 7090 3475 Lakemont Blvd.
 Charlotte, NC 28241 Fort Mill, SC 29708
 704-583-4940 (NC)
 803-802-2440 (SC)
 www.esassociates.com

SEE SHEET 4

SEE SHEET 9



NO. 1108/10/2011
 NORTH CAROLINA TO SOUTH CAROLINA
 HORIZONTAL AND VERTICAL DATUM ESTABLISHED WITH GPS SURVEY USING NORTH CAROLINA VRS NETWORK SYSTEM AND LOCALIZED ON PK NAIL FOUND AT THE LAST REPORTED LOCATION OF NC&S MONUMENT "HARLEE".
 LATITUDE: N35°06'18.44"
 LONGITUDE: W80°56'18.42"
 HORIZONTAL DATUM HAS BEEN TRANSLATED TO SOUTH CAROLINA STATE PLANE COORDINATE SYSTEM (NAD83/2011)
 VERTICAL DATUM IS NAVD 88.
 FIELD WORK COMPLETED JANUARY, 2014.
 1 FOOT CONTOURS.
 UNDERGROUND UTILITIES BASED ON FIELD SURVEYED PIN FLAGS AND/OR PAINT MARKS PLACED BY OTHERS.



2	03/17/14	REVISED SURFACE - SEE SHEET 8 & 10	PUT
1	02/28/14	ADDITIONAL TOPO AREA - SEE SHEET 10	PUT
NO.	DATE	REVISION	BY
TOPOGRAPHIC SURVEY FOR DESIGN OF CAROWINDS - NEW RIDE 2015			
LOCATED IN TOWN OF FORT MILL YORK COUNTY SOUTH CAROLINA			PROJECT NO. BR29-00000 & BR29-00000 SCALE: 1"=40' DATE: 02/10/14 DRAWN BY: [Signature] CHECKED BY: [Signature] DATE OF SURVEY: JUNE 2013 - JANUARY 2014 DRAWING NO. BR29 AREA 4 n 5.DWG
CLIENT: CAROWINDS 14523 CAROWINDS BOULEVARD CHARLOTTE, NC 28273			7 of 10

This drawing and/or the design shown are the property of ESP Associates, P.A. The reproduction, alteration, copying or other use of this drawing without their written consent is prohibited and any infringement will be subject to legal action.
ESP Associates, P.A.

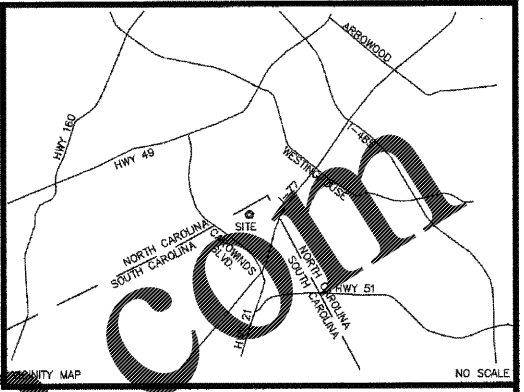
- LEGEND**
- BOUNDARY LINE BY MONUMENTATION
 - INTERIOR PROPERTY LINE
 - EASEMENT LINE
 - RIGHT OF WAY LINE
 - UNDERGROUND TELEPHONE
 - HEDGE
 - TREE LINE
 - DITCH CENTERLINE
 - WATERLINE
 - FENCE
 - SANITARY SEWER LINE
 - UNDERGROUND ELECTRIC
 - UNDERGROUND GAS
 - MAJOR CONTOUR
 - MINOR CONTOUR
 - OVERHEAD ELECTRIC
 - FORCEMAIN
 - CONCRETE
 - PAVER STONE
 - ASPHALT
 - DOWNSPOUT
 - ROOF DRAIN
 - FLAG POLE
 - COLUMN
 - MONITORING WELL
 - HOSE BIB
 - FIRE DEPARTMENT CONNECTION
 - BACKFLOW PREVENTOR
 - BOLLARD
 - POST
 - ELECTRIC PANEL
 - VAULT
 - ELECTRIC VAULT
 - OUTLET BOX
 - BOULDER
 - BENCHMARK
 - GAS METER
 - FIRE HYDRANT
 - TREE
 - DROP INLET
 - CLEAN OUT
 - ELECTRIC BOX
 - IRRIGATION VALVE
 - WATER METER
 - BUSH
 - GUY WIRE
 - UTILITY POLE
 - STORM MANHOLE
 - LIGHT POLE
 - SANITARY SEWER MANHOLE
 - WATER VALVE
 - SPOT ELEVATION
 - SIGN (AS NOTED)
 - DB DEED BOOK
 - PB PLAT BOOK
 - MB MAP BOOK
 - PG PAGE
 - N/F NOW OR FORMERLY
 - TEM TEMPORARY BENCHMARK
 - HCR HANDICAP RAMP
 - H/C HANDICAP PARKING STALL
 - DI DROP INLET
 - DDI DOUBLE DROP INLET
 - CB CATCH BASIN
 - DCB DOUBLE CATCH BASIN
 - SSMH SANITARY SEWER MANHOLE
 - STMH STORM MANHOLE
 - CMP CORRUGATED METAL PIPE
 - HDPE HIGH DENSITY POLYETHYLENE
 - ROP REINFORCED CONCRETE PIPE
 - VCP VITRIFIED CLAY PIPE
 - PVC POLYVINYL CHLORIDE PIPE
 - CPP CORRUGATED PLASTIC PIPE
 - ICV IRRIGATION CONTROL VALVE
 - CM CHECK VALVE
 - SRP SPLIT RANGE PIPE
 - CLF CHAIN LINK FENCE
 - OC OPTIC CABLE
 - WF WOOD FENCE
 - MTL METAL FENCE
 - BLDG BUILDING

ESP
ESP Associates, P.A.
P.O. Box 7030 5475 Lakemont Blvd.
Charlotte, NC 28241 Fort Mill, SC 29708
704-583-4949 (NC)
803-802-2440 (SC)
www.espassociates.com



SEE SHEET 5

NORTH ORIENTED TO S.C. STATE PLANE (NAD83/2011)



HORIZONTAL AND VERTICAL DATUM ESTABLISHED WITH GPS SURVEY USING NORTH CAROLINA VRS NETWORK SYSTEM AND LOCALIZED ON PK NAIL FOUND AT THE LAST REPORTED LOCATION OF NGSS MONUMENT "HARLEE".
LATITUDE: N05°06'18.44"
LONGITUDE: W80°56'18.42"
HORIZONTAL DATUM HAS BEEN TRANSLATED TO SOUTH CAROLINA STATE PLANE COORDINATE SYSTEM (NAD83/2011)
VERTICAL DATUM IS NAVD 88.
FIELD WORK COMPLETED JANUARY, 2014.
1 FOOT CONTOURS.
UNDERGROUND UTILITIES BASED ON FIELD SURVEYED PIN FLAGS AND/OR PAINT MARKS PLACED BY OTHERS.

DO NOT RELY ON THIS DOCUMENT

DRAFT

Professional Engineer Seal: David A. Weirich, License No. C-0587, L-3846

Professional Surveyor Seal: David A. Weirich, License No. 20193

Professional Engineer Seal: David A. Weirich, License No. C01144

B of 10

NO.	DATE	REVISION	BY
2	03/17/14	REVISED SURFACE - SEE SHEET 8 & 10	PUT
1	02/28/14	ADDITIONAL TOPO AREA - SEE SHEET 10	PUT

TOPOGRAPHIC SURVEY FOR DESIGN OF CAROWINDS - NEW RIDE 2015

LOCATED IN TOWN OF FORT MILL YORK COUNTY SOUTH CAROLINA

CLIENT: **CAROWINDS**

14523 CAROWINDS BOULEVARD CHARLOTTE, NC 28273

PROJECT NO: BR29 AREA 4 n 3.DWG
SCALE: 1"=40'
DATE OF SURVEY: JUNE 2013 - JANUARY 2014
DRAWN BY: J.L. PUT
CHECKED BY: S.H.
DATE OF SURVEY: JUNE 2013 - JANUARY 2014
DRAWING NO: BR29 AREA 4 n 3.DWG

8 of 10 SHEET

SEE SHEET 10

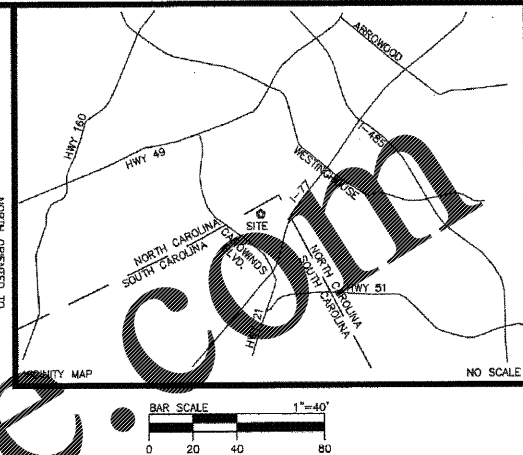
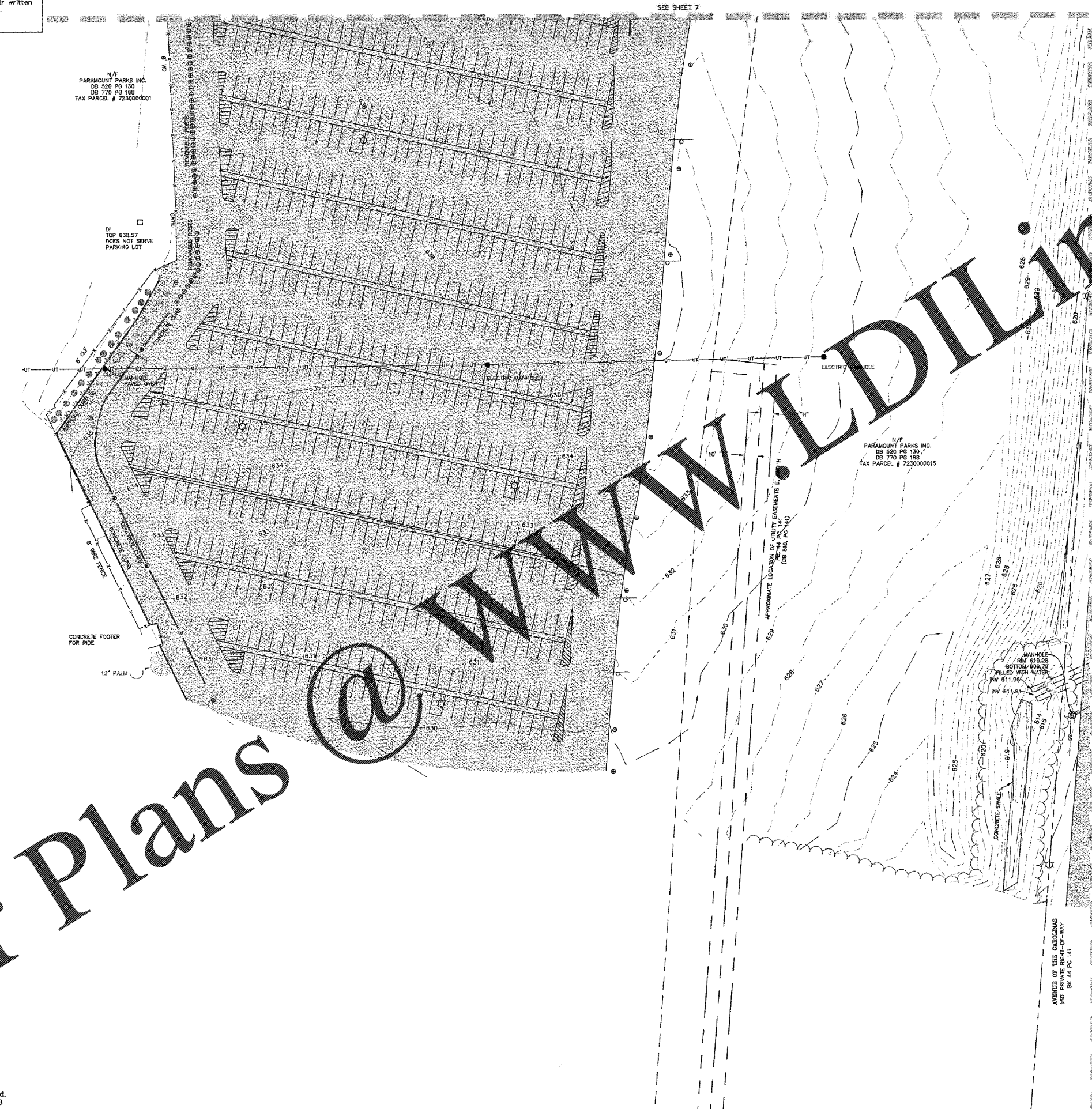
This drawing and/or the design shown are the property of ESP Associates, P.A. The reproduction, alteration, copying or other use of this drawing without their written consent is prohibited and any infringement will be subject to legal action.
 ESP Associates, P.A.

- LEGEND**
- BOUNDARY LINE BY MONUMENTATION
 - INTERIOR PROPERTY LINE
 - EASEMENT LINE
 - RIGHT OF WAY LINE
 - UNDERGROUND TELEPHONE
 - HEDGE
 - TREE LINE
 - DITCH CENTERLINE
 - WATERLINE
 - FENCE
 - SANITARY SEWER LINE
 - UNDERGROUND ELECTRIC
 - UNDERGROUND GAS
 - MAJOR CONTOUR
 - MINOR CONTOUR
 - OVERHEAD ELECTRIC
 - FORCEMAIN
 - CONCRETE
 - PAVER STONE
 - ASPHALT
 - DOWNSPOUT
 - ROOF DRAIN
 - FLAG POLE
 - COLUMN
 - MONITORING WELL
 - HOSE BIB
 - FIRE DEPARTMENT CONNECTION
 - BACKFLOW PREVENTOR
 - BOLLARD
 - POST
 - ELECTRIC PANEL
 - VAULT
 - ELECTRIC VAULT
 - OUTLET BOX
 - BOULDER
 - BENCHMARK
 - GAS METER
 - FIRE HYDRANT
 - TREE
 - DROP INLET
 - CLEAN OUT
 - ELECTRIC BOX
 - IRRIGATION VALVE
 - WATER METER
 - BUSH
 - GUY WIRE
 - UTILITY POLE
 - STORM MANHOLE
 - LIGHT POLE
 - SANITARY SEWER MANHOLE
 - WATER VALVE
 - SPOT ELEVATION
 - SIGN (AS NOTED)
 - DB DEED BOOK
 - PB PLAT BOOK
 - MB MAP BOOK
 - PG PAGE
 - N/F NOW OR FORMERLY
 - TSM TEMPORARY BENCHMARK
 - HCR HANDICAP RAMP
 - H/C HANDICAP PARKING STALL
 - DI DROP INLET
 - DDI DOUBLE DROP INLET
 - CB CATCH BASIN
 - DCB DOUBLE CATCH BASIN
 - SSMH SANITARY SEWER MANHOLE
 - STMH STORM MANHOLE
 - OMP CORRUGATED METAL PIPE
 - HOPE HIGH DENSITY POLYETHYLENE
 - RCP REINFORCED CONCRETE PIPE
 - VCP VITRIFIED CLAY PIPE
 - PVC POLYVINYL CHLORIDE PIPE
 - CPP CORRUGATED PLASTIC PIPE
 - ICV INVERT CONTROL VALVE
 - CM CREPE WATTLE
 - SRI SPLIT RAIL FENCE
 - LF MAIN LINK FENCE
 - OC OPTIC CABLE
 - WF WIRE FENCE
 - ML METAL FENCE
 - BLDG BUILDING

N/F
 PARAMOUNT PARKS INC.
 DB 520 PG 130
 DB 770 PG 188
 TAX PARCEL # 723000001

DI
 TOP 638.57
 DOES NOT SERVE
 PARKING LOT

N/F
 PARAMOUNT PARKS INC.
 DB 520 PG 130
 DB 770 PG 188
 TAX PARCEL # 723000015



HORIZONTAL AND VERTICAL DATUM ESTABLISHED WITH GPS SURVEY USING NORTH CAROLINA VRS NETWORK SYSTEM AND LOCALIZED ON PK NAIL FOUND AT THE LAST REPORTED LOCATION OF NCGS MONUMENT 'HARLEE'.
 LATITUDE: N33°09'18.44"
 LONGITUDE: W80°58'18.42"
 HORIZONTAL DATUM HAS BEEN TRANSLATED TO SOUTH CAROLINA STATE PLANE COORDINATE SYSTEM (NAD83/2011)
 VERTICAL DATUM IS NAVD 88.
 FIELD WORK COMPLETED JANUARY, 2014.
 1 FOOT CONTOURS.
 UNDERGROUND UTILITIES BASED ON FIELD SURVEYED PIN FLAGS AND/OR PAINT MARKS PLACED BY OTHERS.

DRAFT

DO NOT REPRODUCE ON THIS DOCUMENT

9 of 10

NO.	DATE	REVISION	BY
2	03/17/14	REVISED SURFACE - SEE SHEET 8 & 10	PJT
1	03/28/14	ADDITIONAL TOPO AREA - SEE SHEET 10	PJT

PROJECT NO. 090300002 & 090300003
 SCALE 1"=40'
 DATE 02/10/14
 DRAWN BY LK PJT
 CHECKED BY SH
 DATE OF SURVEY JUNE 2013 - JANUARY 2014
 CLIENT: **CAROWINDS**
 14523 CAROWINDS BOULEVARD
 CHARLOTTE, NC 28273

Order Plans

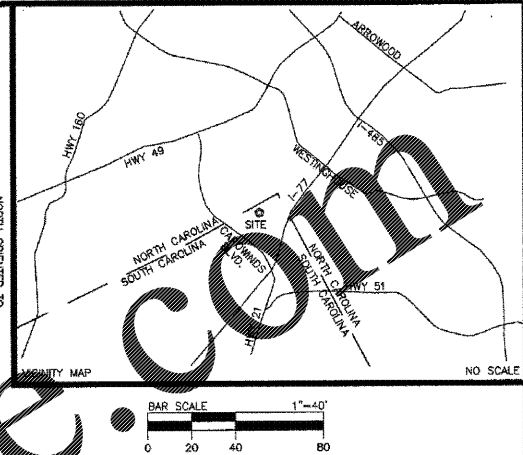
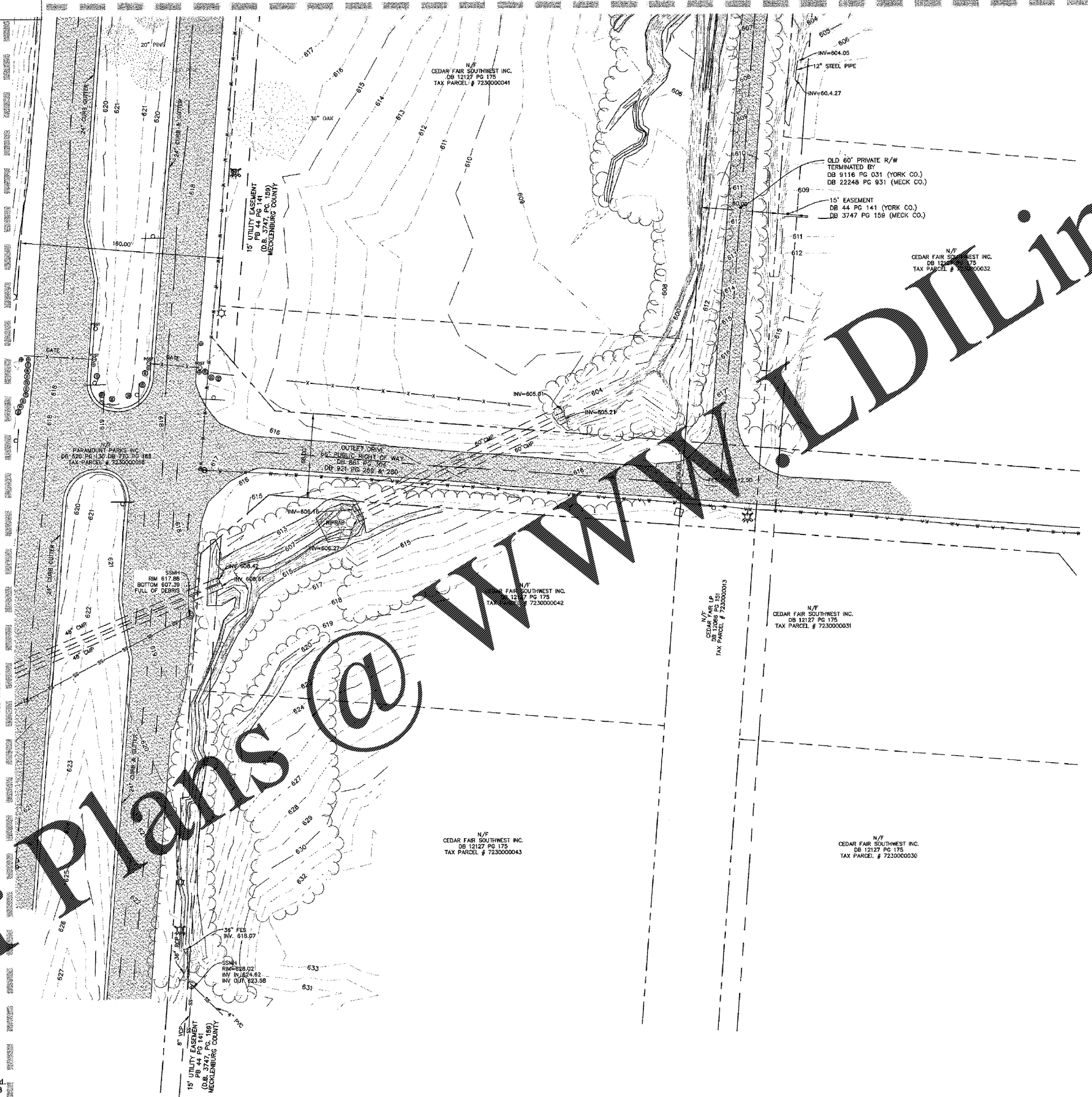
ESP ESP Associates, P.A.
 P.O. Box 7080 3475 Lakemont Blvd.
 Charlotte, NC 28241 Fort Mill, SC 29708
 704-583-4840 (NC)
 803-802-2440 (SC)
 www.espassociates.com

This drawing and/or the design shown are the property of ESP Associates, P.A. The reproduction, alteration, copying or other use of this drawing without their written consent is prohibited and any infringement will be subject to legal action.
 ESP Associates, P.A.

SEE SHEET B

- LEGEND**
- BOUNDARY LINE BY MONUMENTATION
 - INTERIOR PROPERTY LINE
 - EASEMENT LINE
 - RIGHT OF WAY LINE
 - UNDERGROUND TELEPHONE
 - HEDGE
 - TREE LINE
 - DITCH CENTERLINE
 - WATERLINE
 - FENCE
 - SANITARY SEWER LINE
 - UNDERGROUND ELECTRIC
 - UNDERGROUND GAS
 - MAJOR CONTOUR
 - MINOR CONTOUR
 - OVERHEAD ELECTRIC
 - FORCEMAIN
 - CONCRETE
 - PAVER STONE
 - ASPHALT
 - DOWNSPOUT
 - ROOF DRAIN
 - FLAG POLE
 - COLUMN
 - MONITORING WELL
 - HOSE BIB
 - FIRE DEPARTMENT CONNECTION
 - BACKFLOW PREVENTOR
 - BOLLARD
 - POST
 - ELECTRIC PANEL
 - VAULT
 - ELECTRIC VAULT
 - OUTLET BOX
 - BOULDER
 - BENCHMARK
 - GAS METER
 - FIRE HYDRANT
 - TREE
 - DROP INLET
 - CLEAN OUT
 - ELECTRIC BOX
 - IRRIGATION VALVE
 - WATER METER
 - BUSH
 - GUY WIRE
 - UTILITY POLE
 - STORM MANHOLE
 - LIGHT POLE
 - SANITARY SEWER MANHOLE
 - WATER VALVE
 - SPOT ELEVATION
 - SIGN (AS NOTED)
 - DB DEED BOOK
 - PB PLAT BOOK
 - MB MAP BOOK
 - PG PAGE
 - N/F NOW OR FORMERLY
 - TBM TEMPORARY BENCHMARK
 - HCR HANDICAP RAMP
 - H/C HANDICAP PARKING STALL
 - DI DROP INLET
 - DOI DOUBLE DROP INLET
 - CB CATCH BASIN
 - DCB DOUBLE CATCH BASIN
 - SSMH SANITARY SEWER MANHOLE
 - STMH STORM MANHOLE
 - CMP CORRUGATED METAL PIPE
 - HDPE HIGH DENSITY POLYETHYLENE
 - RCP REINFORCED CONCRETE PIPE
 - VCP VITRIFIED CLAY PIPE
 - PVC POLYVINYL CHLORIDE
 - CPP CORRUGATED PLASTIC PIPE
 - ICV INVERTED CONTROL VALVE
 - CM CHECK VALVE
 - SP SPLIT RAFFINANCE
 - OLF OIL FIGHTER CABLE
 - OC OPTIC CABLE
 - WU WOOD FENCE
 - ML METAL FENCE
 - LDG BUILDING

SEE SHEET 9



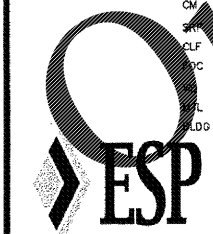
HORIZONTAL AND VERTICAL DATUM ESTABLISHED WITH GPS SURVEY USING NORTH CAROLINA VRS NETWORK SYSTEM AND LOCALIZED ON PK NAIL FOUND AT THE LAST REPORTED LOCATION OF MOSS MONUMENT "HARLEE".
 LATITUDE: N35°06'18.44"
 LONGITUDE: W80°56'18.42"
 HORIZONTAL DATUM HAS BEEN TRANSLATED TO SOUTH CAROLINA STATE PLANE COORDINATE SYSTEM (NAD83/2011)
 VERTICAL DATUM IS NAVD 88.
 FIELD WORK COMPLETED JANUARY, 2014.
 1 FOOT CONTOURS.
 UNDERGROUND UTILITIES BASED ON FIELD SURVEYED PIN FLAGS AND/OR PAINT MARKS PLACED BY OTHERS.

DRAFT
 DO NOT RELY ON THIS DOCUMENT
 NORTH CAROLINA LICENSE NO. C-0587
 SOUTH CAROLINA LICENSE NO. 20193
 ESP ASSOCIATES, P.A. NO. 001144
 CERTIFICATE OF AUTHORIZATION
 DAVID A. WEILICH
 3/17/14

10 of 10

NO.	DATE	REVISION	BY
2	3/17/14	REVISED SURFACE - SEE SHEET 8 & 10	PJT
1	02/28/14	ADDITIONAL TOPO AREA - SEE SHEET 10	PJT

PROJECT NO. BR29-000 & BR29-000-002
 SCALE 1"=40'
 DATE 02/10/14
 DRAWN BY LK, PJT
 CHECKED BY SHL
 DATE OF SURVEY: JUNE 2013 - JANUARY 2014
 CLIENT: **CAROWINDS**
 14523 CAROWINDS BOULEVARD
 CHARLOTTE, NC 28273
 DRAWING NO. BR29 AREA 4 n 5.DWG
 10 of 10



ESP Associates, P.A.
 P.O. Box 7080 3475 Lakemont Blvd
 Charlotte, NC 28241 Fort Mill, SC 29708
 704-585-4949 (NC)
 803-802-2440 (SC)
 www.espassociates.com