



# FL950 Mobile Asset/Trailer Tracker

Ultra-Long Battery Life • Superior Coverage • Up to 24 Position Updates/Day

Fleetilla's FL950 is a robust, self-contained asset tracking device that can be used to remotely monitor trailers, generator sets, construction equipment, roll-off boxes, frac tanks and other equipment.

- Superior, state-of-the-art cellular performance
- Advanced ultra-low power technology to ensure long battery life
- Reliable, long-life battery capable of operating in extreme weather conditions
- Easy to install device in a sealed, weather-proof enclosure
- Up to 10 year battery life, based on configuration<sup>1</sup>
- 1-24 position updates per day
- Advanced 50 channel GPS, capable of working in poor signal conditions using assisted GPS technology

- Measure equipment movement, utilization, orientation changes and other usage parameters using built-in 3-axis accelerometer



## Key Benefits

- Improve supply-chain visibility
- Reduce asset base and Increase asset utilization
- Measure asset usage time and monitor usage pattern
- Manage and monitor rented and leased assets better
- Locate and manage remote assets
- Perform automated yard checks
- Recover stolen/misplaced assets

## FL950 Technical Specification

<b>Size</b>	8.5" X 4" X 1.72" (216 mm X 102 X 44 mm)
<b>Weight</b>	1.160 lbs (526 grams)
<b>Enclosure</b>	Flame retardant, UV-stabilized PC blend material
<b>Operating Temp</b>	-30C to +70C (-22F to +158F)
<b>Storage Temp</b>	-40C to +85C (-40F to +185F)
<b>Humidity</b>	5-100%

### GPS

- 50 Channel GPS Engine
- -162 dBm Tracking Sensitivity
- Position Accuracy 8 ft (2.5 M) CEP, 50%
- Assisted-GPS Capable

### Cell Radio (one of three versions below)

- **3G CDMA Version: FL950-1X**  
800/1900 MHz (CDMA 1xRTT)
- **3G UMTS Version: FL950-UM**  
800/850/900/1700/1900/2100 MHz (UMTS/HSPA)  
850/900/1800/1900 MHz (GPRS/EDGE)
- **2G GSM Version: FL950-GP**  
850/900/1800/1900 MHz (GSM/GPRS)

### Internal Sensors

- Built-in sensors to detect Orientation, Usage, Temperature & Battery Voltage

### Mounting

- VHB adhesive pad and/or flange mount via screws. Optional mounting plate

<sup>1</sup> Battery life provided is an estimate and will vary based on usage, configuration and other factors

All specifications are typical and subject to change without notice.

## Solution Features

- Usable in a wide variety of equipment – Trailers, construction equipment, mobile generator sets, roll-off boxes, frac tanks, golf carts, cranes, fork lifts
- Full-duplex, two-way system -Change reporting configuration over-the-air, as needed
- Easy vertical or horizontal installation using high bonding adhesive pad or screws

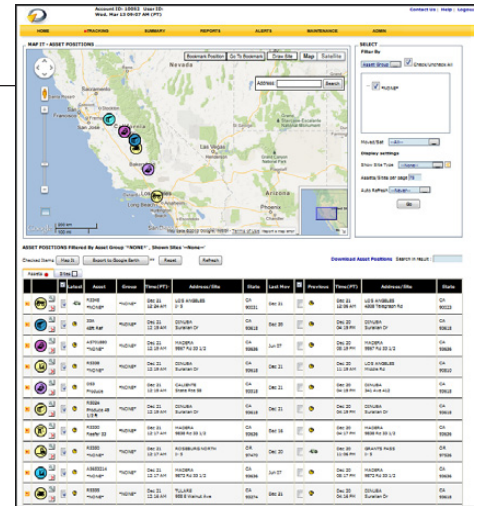


# fleetOrb9™ Asset Management Application

Cloud-Based • Easy to Use • Available 24x7

## Asset Intelligence, Anytime & Everywhere™

- View latest asset locations and usage information
- Perform daily yard checks
- Get list of assets that have not been used in the last 'x' days
- View entire fleet, just one asset group or assets at a specific site/location
- View asset positions relative to company, customer or other sites
- View asset usage history
- Export data to view in Google Earth in satellite or street view
- Use Custom Map Overlays to enhance Google Map data with your own GIS data



## Alerts, Reports, XML Data Interfaces, and More...

- Details of every asset position viewed in map as well in a table with details such as location, operating time, temperature, orientation, battery voltage, GPS and cellular coverage, and other diagnostic information
- Events/Position reports can be used to trigger alerts
- Maintenance alerts can be set up for periodic maintenance based on days, utilization and battery condition
- Reports are run either on demand or scheduled to be delivered to multiple email inboxes daily/ weekly/ monthly
- Use the fleetML interface to integrate real-time asset location and usage data into asset management, leasing and rental management, dispatching, yard management and similar applications

