

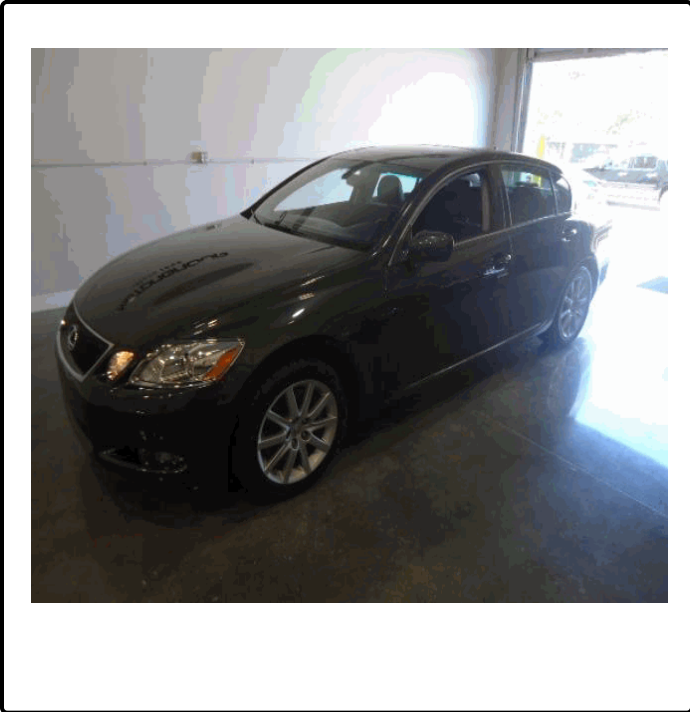
Condition Report

Completed by Alliance Inspection Management



2007 Lexus GS 350

VIN: JTHCE96S870011414



Vehicle Information

- Year : 2007
- Brand : Lexus
- Model : GS 350
- Series :
- Body Type : Sedan
- Drive Type : AWD
- Engine : 3.5L, 6, Gas
- Transmission : 6-Speed A/T
- Mileage : 31730
- Exterior Color : Black
- Trim Color : Black
- Trim Type : Leather

Inspection Details

- Inspection Date : 18 Jul 2014 10:47 AM
- Inspection ID : 502568
- Inspector : 4875
- Grade : B

Inspection Notes :

Vehicle Accessories

- A/C
- Advanced Climate Control
- Anti Lock Braking System
- Bucket Seats
- Child Safety Locks
- Curtain\Side Airbags
- Dual Zone Automatic Temp Control
- Front Reading Lamps
- Heated Mirrors
- Leather Steering Wheel
- Power Bucket Seats
- Power Front Seat
- Power Passenger Seat
- Premium Sound System
- Rear Parking Aid
- Satellite Radio
- Tires - Front Performance
- Wheel Locks
- ABS
- Air Conditioner
- Automatic On/Off Headlights
- CD Changer
- Climate Control
- Daytime Running Lights
- Electrochromic Rearview Mirror
- Front Side Airbags
- Intermittent Wipers
- Navigation System
- Power Door Locks
- Power Hatch
- Power Seat W/Memory
- Rear A/C
- Rear Reading Lamps
- Side Airbags
- Tires - Rear Performance
- Wood Trim Finishes
- AM/FM Stereo
- Alloy Wheels
- Bluetooth
- CD Player
- Climate Controlled Seats With Cooling Fun
- Driver Air Bag
- Engine Immobilizer
- Heated And Cooled Front Seats
- Keyless Start
- Pass-Through Rear Seat
- Power Driver Bucket Seat
- Power Locks
- Power Steering
- Rear Bench Seat
- Rear Spoiler
- Sun/Moon Roof
- Traction Control
- Xenon Headlamps
- Adjustable Steering Wheel
- Aluminum Wheels
- Brake Assist
- Cassette
- Cruise Control
- Dual Front Zone Automatic Temp Control
- Floor Mats
- Heated Front Seats
- Leather Seats
- Passenger Air Bag
- Power Driver Seat
- Power Moonroof / Sunroof
- Power Windows
- Rear Head Air Bag
- Rearview Monitor
- Tire Pressure Monitor
- Trip Computer
- Xm Satellite Radio

Tire Information

	Manufacturer	Size	Depth		Manufacturer	Size	Depth
Left Front :	Michelin	225/50-17	9/32	Right Front :	Michelin	225/50-17	9/32
Left Rear :	Michelin	225/50-17	9/32	Right Rear :	Michelin	225/50-17	9/32
Spare :	Bridgestone	155/70-17	5/32	*Tire Depth of 5/32 or greater is considered normal			

Vehicle Condition

Wear and Tear

1	Hood	Mult Scratches/Heavy	2
2	Hood	Chipped	1

Condition Report

Completed by Alliance Inspection Management



2007 Lexus GS 350

VIN: JTHCE96S870011414

3	Front Bumper Cover	Dent/Paint Dmg	1/8" to 1/2"
4	Front Bumper Cover	Cracked	3" to 4"
5	Front Bumper Cover	Scratch Heavy	1/2" to 1"
6	Left Front Fender	Chipped	2
7	Left Front Door	Chipped	3
8	Left Front Door	Scratch Heavy	< 1/8"
9	Rear Bumper Cover	Scuffed	2" to 3"
10	Rear Bumper Cover	Mult Scratches/Heavy	2
11	Right Qtr Panel	Scuffed	1" to 2"
12	Right Rear Door	Mult Scratches/Heavy	4

Vehicle Inspection Points

Condition Report

Completed by Alliance Inspection Management



2007 Lexus GS 350

VIN: JTHCE96S870011414

Legend: ● Item inspected and is ok ● Item inspected and contains an issue ○ Item is not present or could not be inspected

Exterior

Vehicle Identification Number On Door Jam	●	Vehicle Identification Number On Dashboard	●
Front Lamps	●	Rear Lamps	●
Side Marker	●	Frame / Unibody	●
Roof Rack	●	Door And Side Moldings	●
Wiper Blades/Arms	●	Check Engine Compartment for Fluid Leaks	●
Check Transmission For Leaks	●	Battery	●
Fluid Levels	●	Belts/Hoses	●
Emission Sticker	●		

Interior

Power Door Locks	●	Alarm	●
Back up Camera	●	Navigation/Entertainment System	●
Owners Manual	●	CD/DVD	●
Radio/Speakers	●	Cooled/Heated Seats	●
AC/Heater	●	Trunk Release	●
Tilt Steering Column Functions	●	Parking Brake	●
Dome Light	●	Knobs, Buttons and Other Controls	●
Horn Functions	●	Hood Release	●
Hazard Lights	●	Power Mirrors	●
Power Seats	●	Power Sunroof	●
Seatbelts	●	Power Windows	●
Carpet - Front	●	Warning Lights	●
Headliner Condition	●	Convertible Top Operational	○
Interior Trim	●	Cargo Area Carpet	●
First Aid Kit If Applicable	○	Spare Tire	●
Tailgate Closing Assist	○	Toolkit Complete	●
Carpet - Rear	●		

Date : 18 Jul 2014

Signature : _____

V1.3B2B

Condition Report

Completed by Alliance Inspection Management

2007 Lexus GS 350

VIN: JTHCE96S870011414

Vehicle Pictures

Picture Description : **Other**



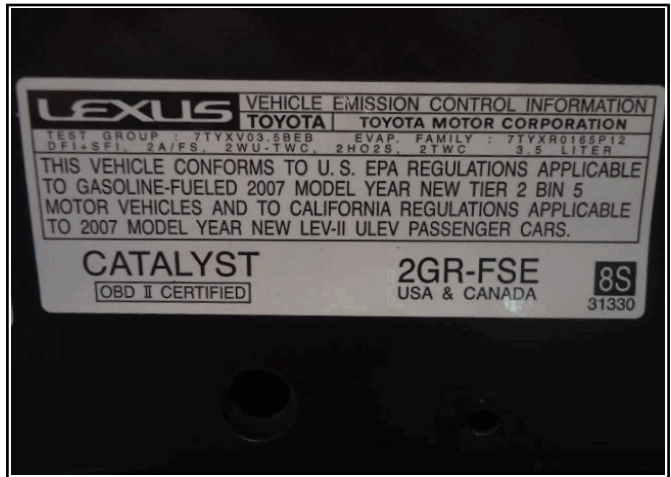
Picture Description : **Other**



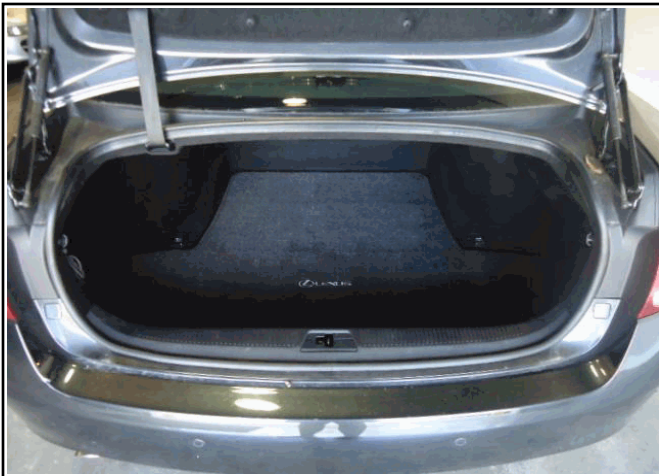
Picture Description : **Odometer**



Picture Description : **Other**



Picture Description : **Cargo Area**



Picture Description : **Other**



Condition Report

Completed by Alliance Inspection Management

2007 Lexus GS 350

VIN: JTHCE96S870011414

Picture Description : **Left Front Corner**



Picture Description : **Right Rear Corner**



Picture Description : **Wheel**



Picture Description : **Other**



Picture Description : **Wheel**



Picture Description : **Dashboard**



Condition Report

Completed by Alliance Inspection Management

2007 Lexus GS 350

VIN: JTHCE96S870011414

Picture Description : **Other**



Picture Description : **Other**



Picture Description : **Other**



Picture Description : **Wheel**



Picture Description : **Wheel**



Picture Description : **Other**



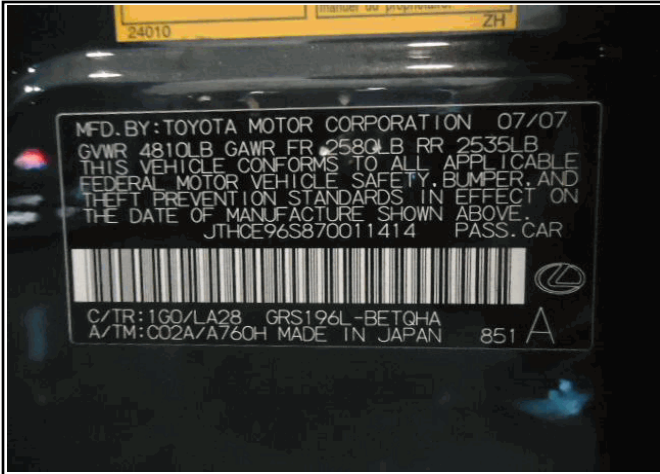
Condition Report

Completed by Alliance Inspection Management

2007 Lexus GS 350

VIN: JTHCE96S870011414

Picture Description : **VIN**



Picture Description : **Front Interior**



Picture Description : **Other**



Condition Report

Completed by Alliance Inspection Management



2007 Lexus GS 350

VIN: JTHCE96S870011414

Damage Pictures

Picture Description : **No Picture**

