

Condition Report

Completed by Alliance Inspection Management

2014 Tesla Model S

VIN: 5YJSA1H12EFP28758



Vehicle Information

Year : 2014
Brand : Tesla
Model : Model S
Series : Performance
Body Type : Sedan
Drive Type : AWD
Engine : 0.5L, 1, Electric
Transmission : Continuously Variable Trans
Mileage : 6128
Exterior Color : Black
Trim Color : Black
Trim Type : Leather

Inspection Details

Inspection Date : 18 Jul 2014 12:35 PM
Inspection ID : 502566
Inspector : 4875
Grade : A

Inspection Notes :

Vehicle Accessories

- Advanced Climate Control
- Automatic On/Off Headlights
- Dual Front Zone Automatic Temp Control
- Heated Front Seats
- Power Driver Bucket Seat
- Power Moonroof / Sunroof
- Satellite Radio
- Xm Satellite Radio
- Air Conditioner
- Bluetooth
- Dual Zone Automatic Temp Control
- Media Card Reader
- Power Front Seat
- Power Seat W/Memory
- Side Airbags
- Alloy Wheels
- Child Safety Locks
- Front Side Airbags
- Navigation System
- Power Hatch
- Rear Sonar System
- Skyview Roof
- Anti Lock Braking System
- Curtain\Side Airbags
- Front Sonar System
- Power Bucket Seats
- Power Locks
- Rearview Monitor
- Xenon Headlamps

Tire Information

	Manufacturer	Size	Depth		Manufacturer	Size	Depth
Left Front :	Continental	245/35-21	10/32	Right Front :	Continental	245/35-21	10/32
Left Rear :	Continental	245/35-21	10/32	Right Rear :	Continental	245/35-21	10/32
Spare :		Tire Does Not Exist		*Tire Depth of 5/32 or greater is considered normal			

Vehicle Condition

Wear and Tear

1 Right Rear Wheel	Curb Rash	4" to 5"
---------------------------	-----------	----------

Vehicle Inspection Points

Condition Report

Completed by Alliance Inspection Management

2014 Tesla Model S

VIN: 5YJSA1H12EFP28758

Legend: ● Item inspected and is ok ● Item inspected and contains an issue ○ Item is not present or could not be inspected

Exterior

Vehicle Identification Number On Door Jam	●	Vehicle Identification Number On Dashboard	●
Front Lamps	●	Rear Lamps	●
Side Marker	●	Frame / Unibody	●
Roof Rack	●	Door And Side Moldings	●
Wiper Blades/Arms	●	Check Engine Compartment for Fluid Leaks	●
Check Transmission For Leaks	●	Battery	●
Fluid Levels	●	Belts/Hoses	●
Emission Sticker	●		

Interior

Power Door Locks	●	Alarm	●
Back up Camera	●	Navigation/Entertainment System	●
Owners Manual	●	CD/DVD	●
Radio/Speakers	●	Cooled/Heated Seats	●
AC/Heater	●	Trunk Release	●
Tilt Steering Column Functions	●	Parking Brake	●
Dome Light	●	Knobs, Buttons and Other Controls	●
Horn Functions	●	Hood Release	●
Hazard Lights	●	Power Mirrors	●
Power Seats	●	Power Sunroof	●
Seatbelts	●	Power Windows	●
Carpet - Front	●	Warning Lights	●
Headliner Condition	●	Convertible Top Operational	○
Interior Trim	●	Cargo Area Carpet	●
First Aid Kit If Applicable	●	Spare Tire	○
Tailgate Closing Assist	○	Toolkit Complete	●
Carpet - Rear	●		

Date : 18 Jul 2014

Signature : _____

V1.3B2B

Condition Report

Completed by Alliance Inspection Management

2014 Tesla Model S

VIN: 5YJSA1H12EFP28758

Vehicle Pictures

Picture Description : **Right Rear Corner**



Picture Description : **Other**



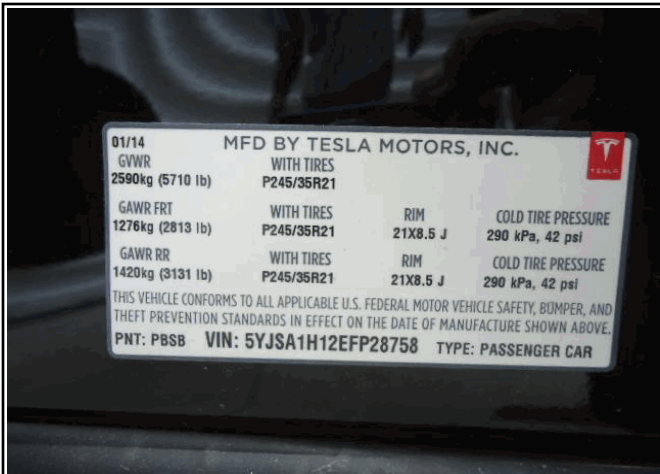
Picture Description : **Wheel**



Picture Description : **Dashboard**



Picture Description : **VIN**



Picture Description : **Front Interior**



Condition Report

Completed by Alliance Inspection Management

2014 Tesla Model S

VIN: 5YJSA1H12EFP28758

Picture Description : **Cargo Area**



Picture Description : **Other**



Picture Description : **Wheel**



Picture Description : **Other**



Picture Description : **Other**



Picture Description : **Wheel**



Condition Report

Completed by Alliance Inspection Management

2014 Tesla Model S

VIN: 5YJSA1H12EFP28758

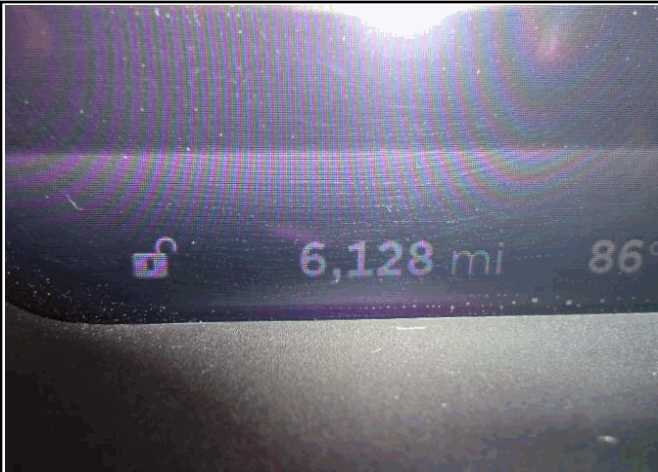
Picture Description : **Other**



Picture Description : **Wheel**



Picture Description : **Odometer**



Picture Description : **Other**



Picture Description : **Left Front Corner**



Condition Report

Completed by Alliance Inspection Management



2014 Tesla Model S

VIN: 5YJSA1H12EFP28758

Damage Pictures

Picture Description : **No Picture**

