

## Written instructions on cleaning the Cavalier units:

### READ ALL STEPS AND

### DISCLAIMER BEFORE ATTEMPTING!

1. First unplug your unit(s) power cord from any and all power sources. Simply turning off a switch or turning off a power strip or other such devices is not recommended and is potentially dangerous. **DO NOT MOVE TO STEP 2 UNTIL THIS STEP IS COMPLETED!**

2. Gather needed supplies:

- a. #2 Phillips head insulated handle screwdriver
- b. 5/16" nut driver
- c. 3/8" nut driver



3. After the unit has been unplugged wrap the cord up and place in a safe area without dangling the cord off a table workbench etc... Cord safety could prevent possible injury or damage to possessions and loved ones.

4. Use a #2 Phillips head insulated handle screwdriver to remove the screws and lock washers from the sides of the unit that have a louver (vent) located on them. Place the screws and lock washers into a zip lock baggy so that you do not misplace them. There should be (13) lock washers and (13) screws.

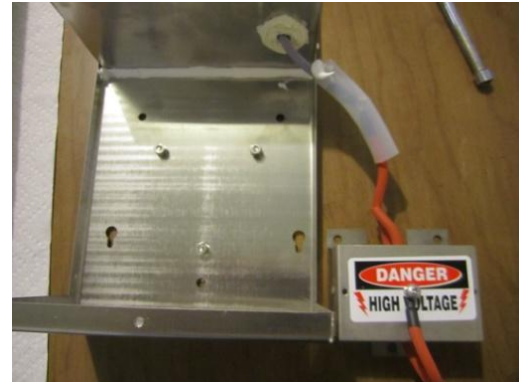
Remove the case top and put it in an area that will not be disturbed. Be extra careful as the case top may have sharp edges. Gloves are suggested to be used to prevent possible injury. Place down newspaper, towels or other such materials to prevent the case top from scratching your surfaces.

5. At this time you will see 2 sections inside of your unit that is separated by a wall. Place the unit sideways in front of you with the cord end on your right side. You will have the generator compartment on your left side. Make sure the cord is not dangling off of the table and observe cord safety measures.



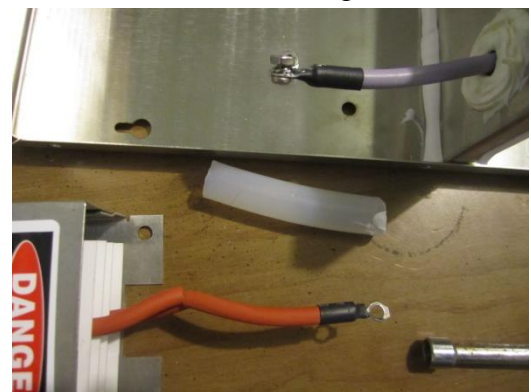
6. Locate and remove the (3) nuts and lock washers securing the generator to the screws that are attached to the base of the unit. Do not remove the screws from the unit. Using a 5/16" nut driver or wrench you should be able to remove the nuts easily. Once these (3) nuts and lock washers are removed lift up on the generator housing and it should lift free from the unit with exception of the thick power wire going to the inside of the generator. Replace the lock washers and nuts on the three screws to avoid losing the parts.

7. The wire coming from the generator to the center wall of the unit will have a tube covering a joined connection of (2) wires. Remove the silicone caulk holding the wire in place so the tube can slide freely. Slide the tubing to one side or the other to expose the (2) eyelets connected with a 6-32 screw, nut and a #6 lock washer. Use the #2 Phillips head insulated handle screwdriver and the 5/16" nut driver or wrench to remove the screw, nut and lock washer. Once the connection is removed, replace the screw, nut and lock washer onto the eyelet of the wire still connected to the center wall of the unit. This prevents loss of the components. The tubing should also remain on the wire if possible or placed in the bag holding the case screws.



8. Before placing the generator component into the dish washer to be cleaned, examine the case and its internal components without taking the generator apart. If there are any broken plates or severed wires contact the manufacturer before proceeding. Broken plates or severed wires may be sharp and caution should be taken handling these components.

9. If the inspection of the generator is finished and there are no damaged parts place the generator into the top rack of the dish washer with the cord facing down. Bend the cord gently to one side as to not disturb the alignment of the generator's inner parts. Make sure the generator is propped up as to not fall over during the cleaning cycle. Water should be able to be sprayed up through the generator without obstruction.



10. Use Cascade dish washing detergent when washing the generator. Other detergents may work but Cascade is the only verified one that works well at this time. Run through a cleaning cycle and allow for the generator to dry thoroughly before placing back into the unit.

11. While the generator is being cleaned in the dish washer wipe out the inside of the unit on the generator side (left side) of the case. Also clean the case top on the louvered (vent) side of the case top. Cleaning gloves and eye protection are suggested to be used for this process. Rubbing alcohol can be used to clean the case top and bottom. Please read and follow all safety precautions while using any cleaning agent. After cleaning the case top and bottom make sure they are dry before reassembly of unit.



12. Once the generator and case top and bottom are cleaned and dry inspect the generator to ensure it was not damaged in the cleaning process.

13. Place the tubing that was removed from the generator hot wire back onto the wire. Use the screw, lock washer and nut, still attached to the wire coming from the center wall of the unit, to reconnect the wire from the generator to the wire attached to the wall of the unit. The lock washer should be located against the nut to prevent it from slipping due to vibration. Use the #2 Phillips head insulated handle screwdriver and the 5/16" nut driver or wrench to complete this part. When tightening the connection of the (2) eyelets form the connection into a slight V to avoid slippage of the tubing once slid over the connection to prevent possible shorting and hazardous conditions. Slide the tubing over the connection to protect the connection. This should be mildly difficult and the tube should not be able to slide easily. Silicone caulk should be used on the outside of the tubing to attach it to the wire. Do not put silicone caulk inside of the tubing protecting the connection. This will prohibit the future repair without replacement parts at the cost to the consumer.

14. Once the connection of the hot wire is completed remove the nuts and lock washers from the mounting screws for the generator. They were placed there to avoid losing them as instructed in step #6 of these instructions. Place the generator back onto the mounting screws and reattach using the (3) #6 lock washers and (3) 6-32 nuts.

15. Inspect the hot wire coming from the center wall and the generator. This wire should not rest against the middle wall of the unit and it should not touch the generator housing. It should be suspended in the air away from case of the unit. The wire is bendable to achieve this goal.

16. Replace the case top onto the unit. The louvered (vented) section should be positioned over the generator side of the unit. Lining up the holes in the case to the case top slightly tighten the #10 lock washers and the self tapping case screws into each of the holes. Do not tighten them down until all screws and lock washers are replaced into the case. Use a #2 Phillips head insulated handle screwdriver to tighten all of the screws.

17. Plug the unit into a working outlet and turn the unit on. If the unit does not sound like a properly operating unit. Turn the unit off immediately. Unplug the unit from the power supply and call Royal Air for assistance.

18. Disclaimer:

Royal Air LLC its employees and distributors are not responsible for any harm or injuries resulting from opening the machine or the cleaning process. The customer is in no way obligated to open the machine or to perform any maintenance on the machine. The customer realizes that they may send the unit into a qualified technician to perform the cleaning of the machine for a nominal fee. Shipping charges may also apply. Following all of the directions above does not guarantee that you will achieve the desired results. Never allow anyone that is not a consenting adult and that has not read these instructions to handle the equipment even under adult supervision. This device is an electrical device and should never be immersed in water. Modifying the unit in any way not directed above may result in dangerous conditions. If you have any concerns regarding the maintenance or repair of the unit STOP all actions make sure the unit is unplugged and call the manufacturer. Performing any actions on the machine other than instructed **voids all warranties**. Contact manufacturer before proceeding with these instructions. Royal Air LLC (330)775-3014.