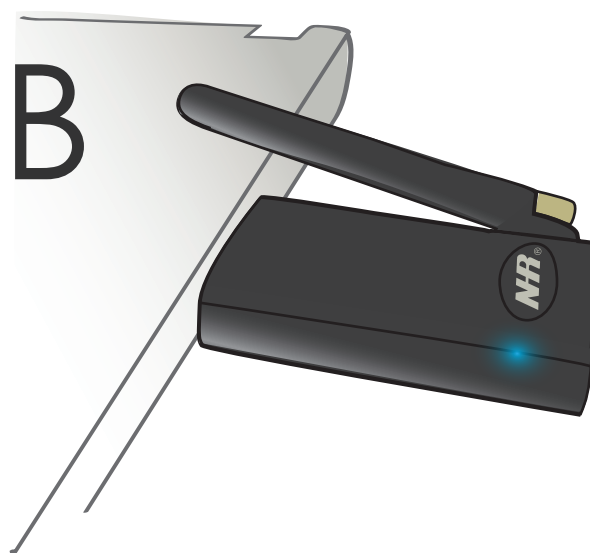




Nietzsche Enterprise CO,LTD.

# WZB-01 USB

ZigBee USB DONGLE  
User Manual



# Content

00

◆ Introduction	01-02
◇ Specification	01
◇ Applications	02
◇ Network Overview	02
◆ Hardware Overview	03
◇ WZB-01USBC ZigBee-Dongle	03
◆ Getting start	04-07
◇ Install USB dongle driver	04
◇ Setting USB dongle configuration	04-05
◇ Computer COM Port setting	06
◇ Make Network Link & LED indication	07



## Accessories

- CD Quickview Data Software
- User Manual

## Safety notice

- A. Please read and follow the instructions before use of this product.
- B. To prevent electrical shock or fire, do not attempt to disassemble this unit and do not expose it to moisture of any kind; ex., rain, liquid spills.
- C. Only use attachments/accessories specified by the manufacturer

\*Note: pictures and contents are subject to change without prior notice

# Introduction

01

WZB-01USBC Wireless ZigBee Dongle, for ModBus, General Applications  
WZB-01USBDC Wireless ZigBee Dongle, for DIO Applications

## Introduction



WZB-01USB series ZigBee USB Dongle features as a coordinator; easy to link and connect to the Host computer, provides fully compliant wireless ZigBee communications with routers/end device, suitable for home/building automation, Industrial control and monitoring, lower power wireless sensor networks & consumer Electronic Applications.

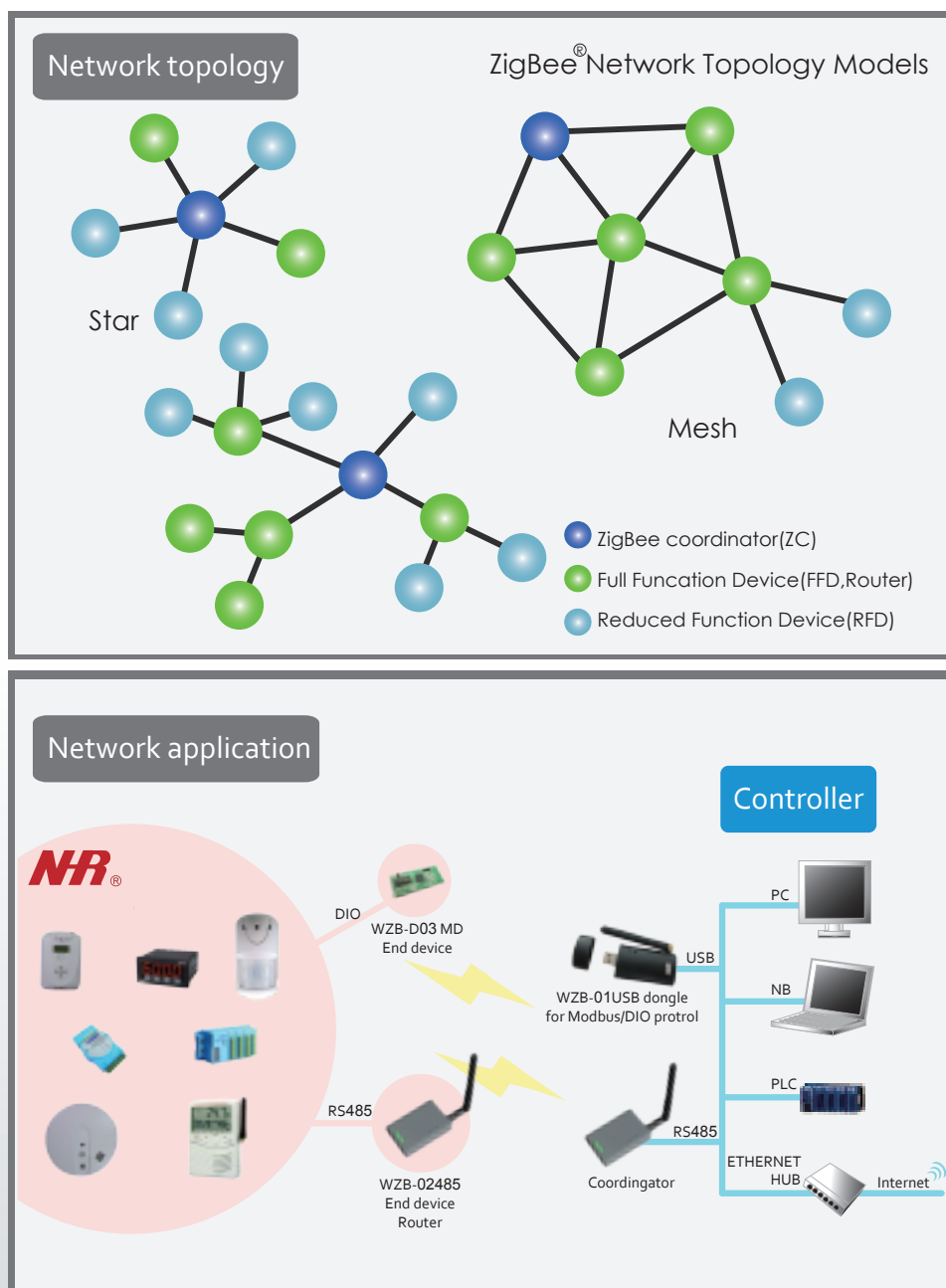
## Specification

Network protocol	PRO IEEE 802.15.4./ZigBee2007
Chip set	TI C2530F256, 256K Flash SoC
RF power	18dBm
Transmission distance	500M free space.
Transmission rate	Max. 250kbps
Baudrate choice	configurable(Default : 9600 8N1)
Output interface	USB
Parameter	Baudrate,PAN ID,RF Channel confirguable
Receiver sensitivity	-92dBm
Auto reconnection	Auto reconnection when interrupted
Network supports	Star, Tree, Mesh
Working voltage	USB DC 5V
Working temperature	-20~70oC,Max.90% RH
OS Support	Windows 2000,XP,Vista,Win 7
Dimension	70x30x7mm

## Applications

- Industrial and Domestic Applications
- Service-based monitoring, security and awareness systems
- Home Area Networks (HAN)
- Home/ Building automation

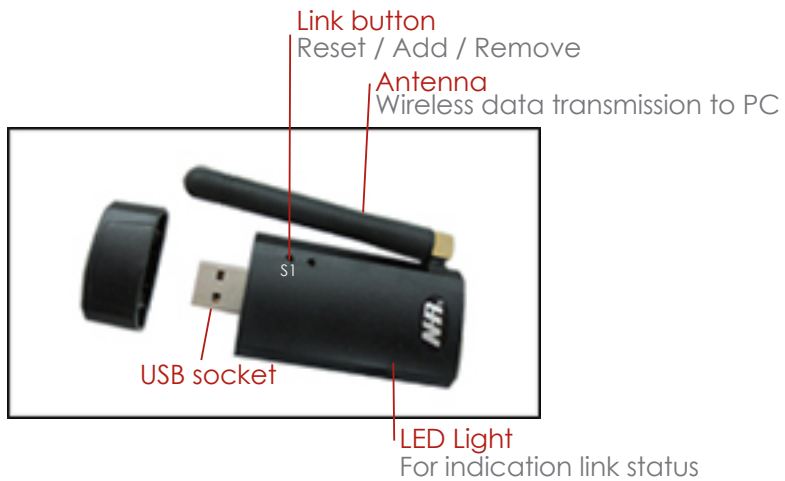
## Network Overview



# Hardware Overview

03

## WZB-01USBC ZigBee-Dongle

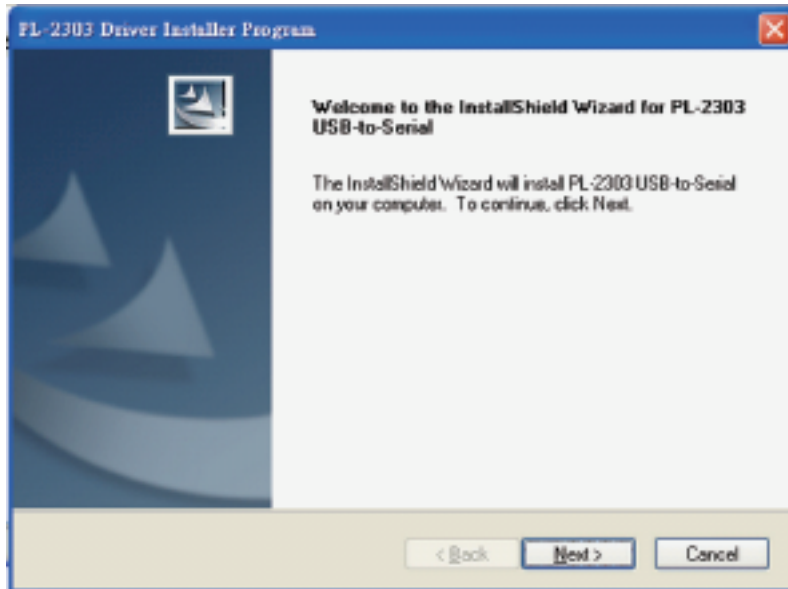


# Getting start

04

## Install USB dongle driver

To install the PL-2303 USB Driver From the CD enclosed



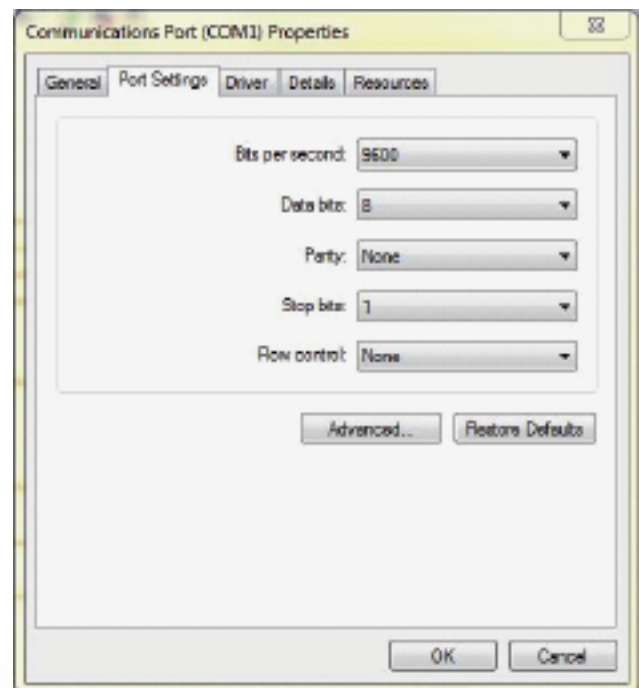
## COM Port setting

The WZB-01USBC ZigBee dongle must be plugged into the PC.




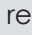






Go to **My Computer**, click right button on the mouse, select **Content**, choose **Hardware**, click **Device Manager**, then set COM port. (Prolific USB-to-Serial Comm Port) as below.

COM port setting items	Setting
Baud rate	9600 bps
Data bits	8
Parity	None
Stop bits	1
Flow control	None



## Make Network Link & LED indication

Function	Operation		LED Indicator
Join to network	Dongle	Press "S1" once	 Blue LED blinking flash, 30 seconds allowed for join  turn to intermittent flash means well linked
Remove the joined device	Dongle	Press "S1" twice	 Blue LED blinking flashes, 30 seconds allowed to remove  turn to  intermittent flashlight means removed.
Reset or Refresh network	Dongle	Press "S1" 3 seconds	  Blue and red LED On for 1 second  turn to intermittent flash.

\*\* Note: Please be noted the dongle must connect with PC through extended USB cable

After above ZigBee network link successfully, user can start running their own monitoring software and enjoy the great convenience of ZigBee wireless solutions.

## Copyright

Copyright 2011 Nietzsche Enterprise Co., Ltd. All rights reserved.

Nietzsche Enterprise reserves the right to make changes and improvements to its product without notice.

## Technical Support

**Shop-WiFi.com**  
Wireless communication products