



# BRENTWOOD 360 SWIVEL CHAIR

## REVCHR

Seat Height: 18"

Seat Width: 21"

Seat Depth: 18"

Overall Height: 36"

600D Polyester



NEW

- Patented Swivel Design chair base turns independent of the chair legs.
- The SWIVEL CHAIR is the first chair ever created that can swivel as well as fold up!
- The SWIVEL CHAIR rotates 360 degrees with ease.
- Great for camping, tailgating, soccer games, or just hanging outdoors
- Rugged construction with smooth swivel action - Tag Rated 350lbs. Tested to 500lbs.
- Oversized cup holder for the big drinks, water bottles, etc.
- Zippered back pocket allows for embroidery
- Mesh Pocket for magazine, change, wallet, phone, etc.
- Heavy-duty carrying case w/carry strap
- US Patent No. 8,272,684 B2

Imprint area: 9"W x 5"H (back only)

Embroidery area: 4<sup>1</sup>/<sub>2</sub>" Dia. (back only)

Color: Gray/Black



*Effortlessly Swivels 360°. Images below show the chair in 4 stages of the swivel process!*





# THE BEST SEAT IN THE HOUSE...

## THE “ULTIMATE” FOLDING CAMP CHAIR

MXCH

Seat 18" high / Overall height 38.5"

Tag rated 400lbs

600D Polyester

- Three reclining position settings
- Padded headrest
- Full length zippered back pocket
- Gray Rip-stop polyester with contrasting gray 600D trim
- Variable size cup holder with cinch cord for stability
- Adjustable armrests
- Powder coated, gray hammertone steel frame
- Deluxe carry bag

Rip-stop polyester & 600D polyester

Adjustable carry bag shoulder strap

Padded area for carry comfort

Full-sized storage pocket on carry bag

Imprint area: 9"W x 7"H (back only)

Embroidery area: 6"W x 6"H (back only)

Color: Black/Gray



Large full length back pocket



Three position recline



Carry bag w/padding & full pocket



5-YEAR CARRY BAG  
GUARANTEE  
ALL 600D POLYESTER  
CARRY BAGS

# THE "BIG'UN" FOLDING CAMP CHAIR

CPXR

Seat Height: 18"

Seat Width: 22"

Seat Depth: 19"

Overall Height: 36"

600D Polyester



Full length back pocket allows embroidery on CPCH, XRMO, MXCH, CPXR, XMCH, SCHR

**THE MOST COMFORTABLE FOLDING CHAIR!**



Navy w/  
Silver Trim

Heavily  
padded back  
and seat

Winged  
support  
for comfort

Red w/  
Black Trim

Heavy duty  
steel frame

## FEATURES:

- Wide seat design
- Side winged supports for added comfort
- Zippered mesh armrest pocket
- Built-in cup holder
- Cushioned seat and headrest
- Zippered 600D polyester carry bag
- Large imprint area on back of chair
- Zippered back pocket for embroidery
- Tag rated at 400lbs.; Tested over 500lbs.

## Imprint areas:

Front on Headrest area: 9"W x 3"H  
(limited to 1 color imprint)

Back: 9"W x 7"H

Bag: 9"W x 5"H

## Embroidery area :

Back: 6"W x 6"H

Colors: Black/Silver Trim, Royal/Black Trim,  
Red/Black Trim, Navy/Silver Trim



600D zippered carry bag



**TAG RATED 400LBS  
TESTED OVER 500LBS**



Royal / Black Trim



Black / Silver Trim



## SIGNATURE CAMP CHAIR

### SCHR

Seat Height 17"

Seat Width 20"

Seat Depth: 16"

Overall height 35"

600D Polyester

- Rip-stop polyester & 600D fabric
- Two-tone, hourglass color accents
- Durable matte black, powder coat steel frame
- Two cup holders
- Zippered back pocket
- Easy load, full length zipper closure on carry bag
- Carry bag made of sturdy rip-stop & 600D fabric
- 350lbs. tag rating; Tested over 500lbs.

Imprint areas:

Back (only): 9"W x 7"H

Carry bag: 9"W x 3"H

Embroidery area:

Back: 6"W x 6"H

Colors: Royal/Gray - Royal Back

Red/Gray - Red Back

Black/Gray - Black Back



Royal



Red



Black

# X-STREAM MESH CAMP CHAIR

## XMCH

Seat Height 17 $\frac{1}{2}$ "

Seat Width 20"

Seat Depth 16"

Overall height 31 $\frac{1}{2}$ "

600D Poly/Mesh



Full length back pocket  
allows embroidery on CPCH,  
XRMO, MXCH, CPXR, XMCH, SCHR



Red

600D Carry Bag

- X-Stream design for greater support, comfort and sportier look
- Eye-popping bright colors
- 350lbs tag rating
- X-Stream mesh for full air flow
- 600D Polyester Carry bag

Imprint area front or back: 9"W x 2 $\frac{1}{2}$ "H  
(front limited to 1 color imprint)  
Embroidery area (back only): 5"W x 3"H

Colors: Blue, Red, Green, Silver



Patent No. D654,733 S  
US & International



Blue



Green



Silver



## CHECKERED COOLER TOTE

### LUNCL

Size: 9" x 12" x 4½"

600D Polyester

- PEVA liner with foam insulation
- "Like fabric" strap handles
- Zippered closure
- Slip pocket on front

Imprint area: 5"W x 4"H

Embroidery area: 3½"W x 2"H

Color: Black/White Checkered

**NEW**



**NEW**



## CHEVRON COOLER TOTE

### LUNTOT

Size: 11" x 13" x 4"

600D Polyester

- PEVA liner with foam insulation
- Stylish die-cut contoured handle
- Zipper closure
- Slip pocket on front
- Chevron fabric pattern

Imprint area: 5¼"W x 3½"H

Embroidery area: 3½"W x 3½"H

Color: Black/White Chevron



All coolers on this page carry the Twin Seals No-Leak Liner Guarantee.

All coolers on this page have PEVA Lead Free Liners.



**...Stays cold 48hrs @ 32°**

## 48/32 ICE LOCKER

SPRCL

Size: 15½" x 17½" x 10"  
1680D Nylon

**NEW**



- Holds 36 cans plus ice
- Rugged 1680D nylon fabric
- Heavy Duty Ultimate features
- Quick access to main cooler compartment w/magnetic closure
- Top dry storage area
- Heavy duty shoulder strap and side handles for two person carry
- Steel bottle opener
- Heavy duty web reinforcement
- Heavy duty PEVA liner
- Over-sized zippers and pulls

Imprint area: 5"W x 2"H  
Color: Black/Gray

Top dry storage area



Quick access to main cooler compartment w/ magnetic closure

Large main compartment with PEVA liner holds 36 cans plus ice



All coolers on these two pages carry the Twin Seals No-Leak Liner Guarantee.  
All coolers on these two pages have PEVA Lead Free Liners.





## 48/32 ICE LOCKER BACKPACK

SPCLBP

Size: 17" x 13" x 10"

1680D Nylon



- Holds 36 cans plus ice
- Rugged 1680D nylon fabric
- Heavy Duty Ultimate features
- Heavily padded backpack straps
- Quick access to main cooler compartment w/magnetic closure
- Top dry storage area
- Heavy duty shoulder strap
- Heavy duty web reinforcement
- Heavy duty PEVA liner
- Over-sized zippers and pulls

Imprint area: 4½"W x 4"H

Color: Black/Gray



*Top dry storage area*

*Quick access to main cooler compartment w/ magnetic closure*

*Large main compartment with PEVA liner holds 36 cans plus ice*



# ULTIMATE HARDTOP COOLER

MXHTCL18

14" x 11" x 9½"

600D Polyester



- Double heat sealed no-leak liner
- Holds 18 cans plus ice
- Heavy duty zipper
- Heavy duty PEVA liner
- Heavy duty shoulder strap with extra padding
- Ripstop polyester and 600D
- Molded top with two recessed cup holders
- Heavy duty metal strap fasteners
- Full-width front slip pocket with flap

Imprint area: 8"W x 3"H

Embroidery area: 3¾"W x 3¾"H

Color: Treefrog Green/Gray





# ULTIMATE 24 CAN COOLER

MXCL24

Size: 12" x 14" x 10"  
600D Polyester



- Holds 24 cans plus ice
- Heavy duty PEVA Liner
- Hard base for stability and durability
- Large front zippered pocket & large slip pocket on back
- Inside top mesh pocket with Velcro® closure
- Large slip pockets on each end
- Adjustable shoulder straps with large shoulder pad
- Large comfortable carry handle
- Folds down with storage straps when not in use

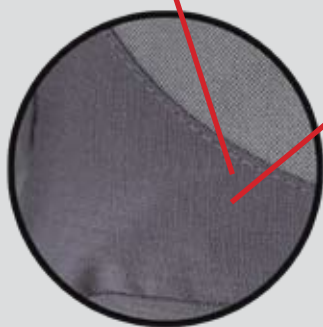
Imprint area: 5 1/4"W x 3 1/2"H

Embroidery area: 3 1/2"W x 3 1/2"H

Color: Gray

Main compartment holds 24 cans plus ice

Large comfortable carry handle



Heavy duty 600D Polyester  
& Rip-stop Polyester

Folds flat for  
easy storage



All coolers on these two pages carry the Twin Seals No-Leak Liner Guarantee.

All coolers on these two pages have PEVA Lead Free Liners.



# ULTIMATE BACKPACK COOLER

MXBPCL

Size: 12" x 14" x 10"

600D Polyester

- Holds 20 cans plus ice
- Large, roomy zippered pockets on each side
- Large front slip pocket
- Heavy duty PEVA Liner with bottom board
- Heavy duty, adjustable shoulder straps
- Heavy duty back pads
- Mesh top pocket
- 600D Polyester with 600D Rip-stop trim

Imprint area: 6"W x 4"H (one color only)

Embroidery area: 3½"W x 3½"H

Colors: Gray, Royal/Gray



Padded back for  
"Ultimate" comfort

Reinforced  
padded  
shoulder straps





# BACKPACK COOLER

CLBP

12¼" x 16½" x 7¾"

600D Polyester

- Holds 20 cans plus ice
- Double heat sealed no-leak liner
- Two mesh side pockets
- Large front gusseted pocket
- Padded backpack straps

Imprint area: 4½"W x 3"H

Embroidery area: 3½"W x 3½"H

Colors: Red, Royal, Green, Gray



Red

OPTIONAL



Green



Royal



Gray



All coolers on these two pages carry the Twin Seals No-Leak Liner Guarantee.

All coolers on these two pages have PEVA Lead Free Liners.



# OUR MOST POPULAR FAMILY OF COOLERS!

## 36 CAN XL FLEX COOLER

CLFLXL

15<sup>3</sup>/<sub>4</sub>" x 10<sup>1</sup>/<sub>2</sub>" x 9<sup>3</sup>/<sub>4</sub>" (36-cans)

- Wide mouth opening for easy access
- Holds 36 cans plus ice
- Quilted 600D polyester outside shell
- Double heat sealed no-leak liner
- Padded handle wrap

Colors: Royal, Black, Gray

Embroidery area: 4"W x 4"H

Imprint area: 4<sup>1</sup>/<sub>2</sub>"W x 4<sup>1</sup>/<sub>2</sub>"H



Royal

Black



Gray





## 16 CAN LARGE FLEX COOLER CLFLLG

13" x 10 1/2" x 7" (16-cans)

- Wide mouth opening for easy access
- Holds 16 cans plus ice
- Quilted 600D polyester outside shell
- Double heat sealed no-leak liner
- Padded handle wrap

Colors: Black, Royal, Red, Forest Green

Embroidery area: 3"W x 3"H

Imprint area: 4"W x 3 1/2"H

CLFLLG



Red

Black



Royal



Forest  
Green



All coolers on these two pages carry the Twin Seals No-Leak Liner Guarantee.

All coolers on these two pages have PEVA Lead Free Liners.



## 12 CAN FLEX COOLER

### COOLFL

13½" x 8" x 6½" (12-cans)

- Wide mouth opening for easy access
- Holds 12 cans plus ice
- Quilted 600D polyester outside shell
- Double heat sealed no-leak liner
- Padded handle wrap

Colors: Black, Royal, Red, Forest Green,  
Navy, Beach Blue, Sea Green

Embroidery area: 3"W x 3"H

Imprint area: 4"W x 3½"H

Sea Green



Royal



Red



Beach Blue



Black



Navy



Forest Green



## 12 CAN WIDE MOUTH FLEX COOLER

WMCLFL

13½" x 8" x 6½" (12-cans)

- "U" shape opening for easy access
- Holds 12 cans plus ice
- Quilted 600D polyester outside shell
- Double heat sealed no-leak liner
- Padded handle wrap

Colors: Purple, Neon Green, Creamside Orange

Embroidery area: 3½"W x 3½"H

Imprint area: 4"W x 3½"H



Purple



Creamside Orange

Wide Mouth  
"U" Shape  
Opening



Neon Green



All coolers on these two pages carry the Twin Seals No-Leak Liner Guarantee.

All coolers on these two pages have PEVA Lead Free Liners.



# ULTIMATE MACHO LUNCH COOLER

MXCLDC

11" x 11" x 8"

600D Polyester



- Dry compartment on top with dual access
- Large main compartment – both compartments have heavy duty PEVA liners
- Front zippered pocket and large mesh pockets on each end
- Heavy duty, over-sized zippers
- Double heat sealed no-leak liner
- Heavy Duty carry handle

Imprint area: 4"W x 2"H (one color only)

Embroidery area: 2 1/2" Diameter

Color: Gray



All coolers on these two pages carry the Twin Seals No-Leak Liner Guarantee.

All coolers on these two pages have PEVA Lead Free Liners.





## COOLER DUFFLE

CLDF

Size: 15" x 11" x 4"

300D Polyester

- Holds 12 cans plus ice
- Dual zipper opening for easy access
- Sleek Domed styling
- Comfortable handle straps and shoulder strap
- PEVA liner with full insulation
- Brushed nickel hardware
- Front and back of bag has accented binding two handy "D rings" on front of bag

Imprint area: 3"W x 2½"H

Color: Black/Gray



## ULTIMATE CASSEROLE KEEPER

MXCK

Size: 15" x 11" x 4"

1680D Nylon

- Heavy Duty carry handle
- Over-sized zippers and pulls
- Easy access front slide opening or full open
- Sleek styling is at home anywhere
- High Temperature tolerant liner - up to 500 degrees

Imprint area: 5"W x 3"H

Embroidery area: 3"W x 2"H

Color: Black/Gray



(casserole dish not included)

## DOUBLE COMPARTMENT COOLER TOTE

DCCLTOT

19½" x 15" x 8"

600D Polyester

- 14" front pocket with flap
  - Two full-size insulated compartments with zipper closures
  - Both main compartments are lined with PEVA
  - Extra long, shoulder-length carry straps
  - Perfect for cold food shopping, beach or diaper bag!
- Heat sealed no-leak liner

Imprint area: 8"W x 3"H

Embroidery area: 3¾"W x 3½"H

Color: Black/White Chevron Pattern



All coolers on this page carry the Twin Seals No-Leak Liner Guarantee.

All coolers on this page have PEVA Lead Free Liners.





## DOUBLE DECKER CASSEROLE KEEPER

DDCK

600D Polyester

15" x 11" x 6"

- Expands to hold two 9 x 13 casserole dishes (not included)
- Keeps food hot or cold
- Zippered closure
- Over-sized canopy handle for stability
- High heat tolerant liner – up to 500 degrees

Imprint area: 5"W x 3"H (one color only)

Embroidery area: 3<sup>3</sup>/<sub>4</sub>"W x 3<sup>3</sup>/<sub>4</sub>"H

Color: Black/White Chevron Pattern



## JUMBO COOLER

CLTOT

17½" x 15" x 8"

600D Polyester

- Large main zippered compartment
- Keeps items cold for hours
- Shoulder length webbed handles
- Large slip pocket on front
- Ideal for picnic, shopping or diaper bag
- Folds flat for storage w/Velcro® closure
- Double heat sealed no-leak liner

Imprint area: 5"W x 5"H

Embroidery area: 3½"W x 3½"H

Colors: Silver/Black, Houndstooth Pattern



Straps can be adjusted to accommodate items that must remain flat.



All coolers on this page carry the Twin Seals No-Leak Liner Guarantee.

All coolers on this page have PEVA Lead Free Liners.





## CASSEROLE KEEPER

### CSKP

600D Polyester

15" x 11" x 3 1/2"

- Holds 9"x 13" casserole dish (not included)
- Keeps food hot or cold
- Easy carry handles
- Large outside slip pocket with Velcro® closure
- Zipper top opens wide for easy cleaning

Imprint area: 5"W x 4"H

Embroidery area: 2 1/2"W x 2 1/2"H

Colors: Gray/Black, Houndstooth  
Pattern



## WHEELED COOLER

WHCL

20" x 13" x 12"

600D Polyester/Rip-stop Nylon

- Holds 30 cans plus ice
- Dry compartment in top
- Large front zippered pocket with key clip and zippered mesh pocket inside
- Large mesh pocket on each side of cooler
- Removable liner for easy cleaning
- Heavy duty trolley system with quiet tandem wheels
- Heavy duty rubberized handle

Embroidery area: 3"W x 3"H

Imprint area: 5"W x 4"H

Color: Royal/Black





## SATIN PAISLEY COOLER TOTE

SPCLTOT

19.5" x 15" x 8"

Satin / 600D Polyester

- 7.5" front slip pocket
- Fabric is diamond pleated satin with paisley accent
- Large main compartment lined with PEVA
- Padded carry straps

Imprint area: 4½"W x 3½"H  
(one color only)

Embroidery area: 3¾"W x 3¾"H

Color: Black w/Gray Paisley



View of paisley pattern



All coolers on these two pages carry the Twin Seals No-Leak Liner Guarantee.

All coolers on these two pages have PEVA Lead Free Liners.



## DELUXE SHOE BAG

S602

14<sup>1</sup>/<sub>4</sub>" x 9<sup>1</sup>/<sub>2</sub>" x 4<sup>1</sup>/<sub>2</sub>"

600D Polyester

- Side mesh airflow vents
- Interior velour lining
- Two outside pockets

Imprint area: 3"W x 3<sup>1</sup>/<sub>2</sub>"H

Embroidery area: 3" Diameter

Color: Black



## GOLF BAG COOLER

COOLGB

9" x 13" x 7"

Soft Imitation Leather

- Holds up to 8 cans plus ice
- 2 accessories pockets
- Adjustable shoulder strap
- Metal hardware
- Double heat sealed no-leak liner

Imprint area: 3<sup>1</sup>/<sub>2</sub>"W x 3<sup>1</sup>/<sub>2</sub>"H (1-color only)

Embroidery area: 3" diameter

Color: Black



All coolers on this page carry the Twin Seals No-Leak Liner Guarantee.

All coolers on this page have PEVA Lead Free Liners.







## PICNIC SET FOR FOUR

PNXGP4

12" x 15 1/2" x 8 1/2"

600D Polyester

Imprint area: 6"W x 3"H

Embroidery area: 3 1/2"W x 3 1/2"H

Color: Black

- Spacious insulated cooler compartment
- Wide-mouth cooler opening for easy access
- Includes drinkware, napkins, knives, forks, spoons, cheese board with cheese knife
- Cork screw / bottle opener
- Salt & pepper shakers
- Contrasting plaid liner
- Adjustable shoulder strap
- Available companion: PNBKBW checkered picnic blanket



## ...Get Outside, Make Some Memories

### ULTIMATE BLANKET

MXBKT

50" x 60"

14½"H x 13½"W Folded

Blanket Weight: 32oz. of "Ultimate" comfort

- Adjustable Shoulder strap
- Durable 600D Polyester pouch with heavy duty zipper
- Diamond quilted pattern on built-in pouch
- Black, gray and white checkered fleece blanket
- Moisture resistant backing
- Use as comfortable seat cushion when folded

Embroidery area: 3½"W x 3½"H

Imprint area: 7"W x 5"H

Color: Black/Gray/White Checked



Diamond quilting

Also available in MAX-4  
Camo Print. See Page 44  
for more details & pricing



Blanket folds into its built-in  
zippered pouch.  
Pouch doubles as  
stadium cushion.





## WEEKEND GARMENT BAG

GB600

39" x 23" x 3"

600D Polyester/210D Nylon

- 600D Front; Black Nylon back
- Front lined pocket
- Carry handles & handle wrap
- ID card holder
- Inside mesh pocket

Imprint area: 12"W x 8"H (one color only)

Embroidery area: 6" Diameter

Color: Black



Bottom inside mesh pocket

## DELUXE TRAVEL KIT

TK602

10" x 11 1/2" x 4"

600D Polyester

- "U" shaped main compartment
- Multiple pockets and loops
- Metal hanging hook

Imprint area: 5"W x 4"H

Embroidery area: 3"W x 3"H

Color: Black



Toiletries Not Included



# ULTIMATE CAMO BACKPACK - MAX-5

MXBPDL-5

13½" x 17" x 10"

600D Polyester



- Realtree Max-5® camo pattern – 600D polyester with rip-stop polyester accents
- Security organizer pocket on back – no access from front! MP3 pouch, ear bud port, ID & credit card pouches, etc
- Two large inside pockets with small zippered pockets
- Front zippered organizer pocket
- Heavy duty Ultimate padding throughout
- Heavy duty shoulder straps with extra padding
- Heavy duty zippers and zipper pulls
- Heavily padded stress points on back for field comfort
- Large mesh pockets on each side
- Comfortable carry handle built into shoulder strap system

Embroidery area: 4"W x 4½"

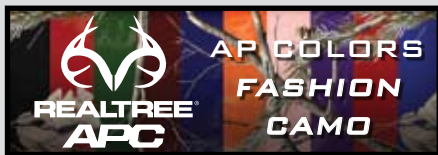
Imprint area: 3½"W x 5"H



Main compartment has padded pocket large enough for a 17" laptop



Custom camouflage orders of 3,000 + units are available in the following patterns:





## FISHING TACKLE BAG - MAX 5

MXFTB-5

11" x 17" x 10"

600D Polyester



- Licensed Realtree MAX-5® pattern
- Over-sized heavy duty zippers
- Closed cell foam for protection
- Bottom board for stability
- Fully lined interior compartment
- 7.5" x 7.5" x 2.5" pocket on each end of bag – each end pocket contains a 6" x 6" plastic lure box
- Large slip pocket on front of bag – contains 4 utility mesh pockets
- Two smaller 4" x 5" gusseted zipper pockets on front
- Large utility pocket on top of bag
- Heavy Duty adjustable shoulder strap

Imprint area (Top Pocket): 4½"H x 4"W

Embroidery area (Top Pocket): 3H" x 3"W



Lures, Rod & Reel, etc. Not Included!  
Two Lure Boxes are Included!

## ULTIMATE CAMO BACKPACK COOLER - MAX-5

MXBPCL-5

Size: 12" x 14" x 10"

600D Polyester

- Holds 20 cans plus ice
- Large, roomy zippered pockets on each side
- Large front slip pocket
- Heavy duty PEVA Liner with bottom board
- Heavy duty, adjustable shoulder straps
- Heavy duty back pads
- 600D Polyester with 600D Rip-stop trim

Imprint area: 6"W x 4"H

Embroidery area: 3½"W x 3½"H



Padded back for  
"Ultimate" comfort

Reinforced  
padded  
shoulder straps



# ULTIMATE CAMO DRY TOP (MAX-5 Pattern When Available) COOLER - MAX-4

MXCLDC-4

11" x 11" x 8"

600D Polyester/Rip-Stop Polyester



- Side mesh pocket
- Top and bottom PEVA lined coolers
- Front zipper pocket
- Top compartment access with cooler open
- Holds 16 cans plus ice
- Heavy duty double heat sealed No-Leak Liner
- Heavy duty Ultimate padding throughout
- Heavy duty zippers and zipper pulls

Imprint area: 4"W x 2"H

Embroidery area: 2 1/2" Diameter



Dry compartment  
is accessible while  
open



Cooler compartment  
holds 16 cans  
plus ice



All coolers on these two pages carry the Twin Seals No-Leak Liner Guarantee.

All coolers on this page have PEVA Lead Free Liners.



## ULTIMATE CAMO 20 CAN COOLER - MAX-4 (MAX-5 Pattern When Available)

MXCL20-4

11½" x 13" x 8½"

600D Polyester/Ripstop Accents



- Holds up to 20 cans plus ice
- Quick access top flap
- Top dry storage pocket
- Double heat sealed no-leak liner
- Heavy duty Ultimate padding throughout
- Heavy duty adjustable shoulder strap
- Heavy duty zippers and zipper pulls

Imprint area: 5"W x 3½"H

Embroidery area: 4" W x 4" H



2" deep  
dry storage  
pocket

Quick access  
to main  
compartment







## XL UTILITY COOLER - MAX-5

XLCLMAX-5

Size: 12" x 14" x 10"

600D Polyester



- 36 can MAX-5® flex cooler
- Holds 36 cans with Ice
- RealTree MAX-5® camo pattern
- Double heat sealed –No-Leak Liner
- Heavy duty webbing and shoulder strap / padded handle
- Three outside pockets – two 3.5" x 8" and one 5" x 8"

Imprint area: 5"W x 4½"H (Front Flat Pocket)

3"W x 5½"H (Back Zippered Pocket)

Embroidery area: 3¼"W x 3¼"H (Front Flat Pocket)

3¼"W x 3¼"H (Back Zippered Pocket)



All coolers on this page carry the Twin Seals No-Leak Liner Guarantee.

All coolers on this page have PEVA Lead Free Liners.



## ULTIMATE CAMO TRAVELER - MAX-4 (MAX-5 Pattern When Available)

MXTVL-4

17" x 11" x 10 1/2"

600D Polyester/ Rip-Stop Polyester

- 3 external pockets & 2 mesh pockets
- "U" shaped top opening
- Oversized main compartment
- Heavy duty removable shoulder strap with pad
- Padded handle wrap
- Heavy duty Ultimate padding throughout
- Heavy duty zippers and zipper pulls
- Includes bottom board for rigidity

Imprint area: 6" W x 5"H

Embroidery area: 4" Diameter



"U" shaped opening  
on large main  
compartment

5 external pockets  
for extra storage







## RANGE BAG - MAX-5

RBMAX-5

Size: 13" x 9" x 3"

600D Polyester

- RealTree MAX-5® pattern
- Large front pocket: 2 $\frac{1}{4}$ " x 11" x 7"
- Inside: 8 - 3" wide slip pockets and two full-size slip pockets – fully lined
- Extra heavy padding to protect pistol, clips, etc
- Padded carry handle & shoulder strap w/heavy duty webbing
- Full-length zipper pocket and two handy daisy chains on back side for added convenience

Imprint area: 8"W x 5 $\frac{1}{2}$ "H

Embroidery area: 4"W x 2 $\frac{1}{2}$ "H



*Accessories shown in  
images are not included*



## PERSONAL COOLER - MAX-4

CLPMAX-4

12<sup>1</sup>/<sub>2</sub>" x 8<sup>1</sup>/<sub>2</sub>" x 6<sup>1</sup>/<sub>2</sub>"

600D Polyester/Rip-Stop Polyester

- Heavy Duty over-sized zippers
- Holds 8 cans plus ice
- Padded carry handle & padded shoulder strap with metal hardware
- Heavy duty double heat sealed No-Leak Liner
- Heavy duty Ultimate padding throughout
- Heavy duty zippers and zipper pulls

Imprint area: 4<sup>1</sup>/<sub>2</sub>"W x 2<sup>1</sup>/<sub>2</sub>"H

Embroidery area: 2<sup>1</sup>/<sub>2</sub> Diameter



(MAX-5 Pattern When Available)



(MAX-5 Pattern When Available)

## PERSONAL DUFFLE - MAX-4

MXPD-4

11" x 16" x 10"

600D Polyester/Rip-Stop Polyester

- Heavy Duty over-sized zippers
- Fully lined with security zipper pouch
- Three large outside pockets
- Padded carry handle & padded shoulder strap with metal hardware

Imprint area (on front): 4<sup>1</sup>/<sub>2</sub>"W x 2<sup>1</sup>/<sub>2</sub>"H

Embroidery area (on front): 2<sup>1</sup>/<sub>2</sub> Diameter



All coolers on this page carry the Twin Seals No-Leak Liner Guarantee.

All coolers on this page have PEVA Lead Free Liners.





## ULTIMATE BLANKET - MAX-4

(MAX-5 Pattern When Available)

MXBKT-4

50" x 60"

Polyester Fleece

14½"H x 13½"W Folded

Blanket Weight: 32oz. of "Ultimate" comfort

- Adjustable Shoulder strap
- Durable 600D Polyester pouch with heavy duty zipper
- Diamond quilted pattern on built-in pouch
- Max-4® Pattern with solid khaki backing
- Moisture resistant backing
- Use as comfortable seat cushion when folded

Embroidery area: 3½"W x 3½"H

Imprint area: 7"W x 5"H



Blanket folds into its built-in zippered pouch. Pouch doubles as stadium cushion.

Also available in black/white plaid. See Page 33 for more details & pricing



# THE MAX-5 "BIG'UN" FOLDING CAMP CHAIR

## XRMAX-5

Seat Depth: 19"  
Seat Height: 18"  
Overall Height: 36"  
600D Polyester

- Wide seat design
- Side winged supports
- Heavy duty steel frame
- Two built-in cup holders
- Heavily padded seat and back
- Solid 600D zippered carry bag
- Tag rated at 400lbs.
- Independent lab tested over 500lbs.

Heavily  
Padded back  
and seat

### Imprint area:

Front on headrest : 9"W x 3"H  
(Limited to 1-color imprint)

Back: 9"W x 7"H

Bag: 9"W x 5"H

### Embroidery area:

Back: 6"W x 6"H

**TAG RATED 400LBS  
TESTED OVER  
500LBS**

colorVU™  
by BRENTWOOD  
OPTIONAL

Winged  
support  
for comfort

Heavy duty  
steel frame



**5-YEAR CARRY BAG  
GUARANTEE**  
ALL 600D POLYESTER  
CARRY BAGS





# THE CAMO "BIG'UN" FOLDING CAMP CHAIR

## XRMO

Seat Depth: 19"

Seat Height: 18"

Overall Height: 36"

600D Polyester

- Wide seat design
- Side winged supports
- Heavy duty steel frame
- Two built-in cup holders
- Heavily padded seat and back
- Solid 600D zippered carry bag
- Tag rated at 400lbs.
- Independent lab tested over 500lbs.

Heavily  
Padded back  
and seat



Imprint area:

Front on headrest : 9"W x 3"H

(Limited to 1-color imprint)

Back: 9"W x 7"H

Bag: 9"W x 5"H

Embroidery area:

Back: 6"W x 6"H



5-YEAR CARRY BAG  
GUARANTEE  
ALL 600D POLYESTER  
CARRY BAGS

Heavy duty  
steel frame

Winged  
support  
for comfort

**TAG RATED 400LBS  
TESTED OVER  
500LBS**



## CAMO GUN CASE

SGCAPX

53" x 9"

600D Polyester

- Long enough to fit most shotguns and rifles
- Protective quilted, padded lining
- Leather-look trim
- 7" x 7" x 1" gusseted side pocket
- Padded shoulder strap

Imprint area: 4"W x 4"H

Embroidery area: 3"W x 3"H



Quilted Lining

Leather-look trim



## CAMO SHELL BAG

SBAPX

Size: 13½" x 10" x 7"

600D Polyester

- Two large shell pockets
- One front slip pocket
- 2" adjustable webbed belt
- Bag foam insulated throughout for comfort and stability

Imprint area: 3"W x 3"H

Embroidery area: 2½"W x 2½"H





## CAMO FIELD BAG

FBAPX

Size: 20" x 10" x 8"

600D Polyester

- 8 external pockets for all your needs
- Portioned & lined main compartment
- Detachable insulated drink holder
- Adjustable, detachable shoulder strap
- Heavy duty rubberized carry handle

Imprint area: 5"W x 3"H

Embroidery area: 3"W x 3"H



Leather-look trim



Detachable single can cooler attaches inside bag with Velcro® straps



## CAMO GEAR BAG

DNDAPX

20" x 12" x 10"

600D Polyester

- Realtree APX Pattern
- Dual zippered top compartment
- Large front & end pockets
- Organizer: ID card holder & cell phone pocket
- Pricing includes one color in one location

Imprint area: 4"W x 4"H

Embroidery area: 3"W x 3"H





## CAMO FLEX COOLER

CFLCAPX

13" x 10" x 7"

600D Polyester

- Wide mouth opening
- Padded handle wrap
- Holds 16 cans plus ice
- Double heat sealed no leak liner

Imprint area: 4"W x 3½"H

Embroidery area: 3"W x 3"H



## CAMO SEAT COOLER

CSTCX

Frame – 18" x 12" x 11"

Cooler – 13" x 10" x 9"

600D Polyester

- Steel frame
- Padded seat
- Holds 18 cans plus ice
- Zippered main compartment
- Double heat sealed no-leak liner

Imprint area: 9"W x 4"H

Embroidery area: 4"W x 4"H



All coolers on these two pages carry the Twin Seals No-Leak Liner Guarantee.

All coolers on these two pages have PEVA Lead Free Liners.







## CAMO ALL IN ONE COOLER

CHCLAPX

13" x 11½" x 9"

600D Polyester

- Holds 16 cans plus ice
- 3 large mesh pockets outside
- One large mesh pocket inside
- 3 handy fold-down can or cup holders inside front panel
- Adjustable shoulder strap
- Double heat sealed no-leak liner
- Handy "D" ring for keys or bottle opener

Imprint area: 4½"W x 3½"H

Embroidery area: 3"W x 3"H



## CAMO VOYAGER DUFFLE

D42APX

600D Polyester

22" x 11" x 9"

- Large main compartment
- Zippered front pockets
- Utility "D" ring
- Adjustable padded carry strap
- Web carry handle with wrap

Imprint area: 5"W x 4"H

Embroidery area: 2½"W x 2½"H



## CAMO BACKPACK COOLER

CLBPAPX

12" x 17" x 8"

600D Polyester

- Holds 20 cans plus ice
- Double heat sealed no-leak liner
- Top zipper for easy access
- Two mesh side pockets
- Large front gusseted pocket
- Padded backpack straps

Imprint area: 4½"W x 3"H

Embroidery area: 3½"W x 3½"H



## CAMO PERSONAL COOLER

CLPAPX

11½" x 9½" x 7½"

600D Polyester

- Heavily insulated main compartment
- Holds 8 cans plus ice
- Removable adjustable shoulder strap
- Double heat sealed no-leak liner

Imprint area: 6"W x 3½"H

Embroidery area: 3½"W x 3½"H



All coolers on these two pages carry the Twin Seals No-Leak Liner Guarantee.

All coolers on these two pages have PEVA Lead Free Liners.





## THE MONSTER CAMO GEAR BAG

DRTAPX

24½" x 13" x 14½"

600D Polyester

- Dual zippered main opening
- Zippered, gusseted front & side pockets
- Adjustable padded shoulder strap
- Webbed handles

Imprint area: 7" W x 5"H

Embroidery area: 4½"W x 4½"H



## CAMO BACKPACK

BPMOAPX

12" x 18½ x 7"

600D Polyester

- Large main compartment
- Front pocket has an organizer
- Zippered storage pockets
- Padded backpack straps
- 2 mesh water bottle pockets

Imprint area: 5"W x 4½"H

Embroidery area: 4½"W x 3"H





**CONTACT INFO:**