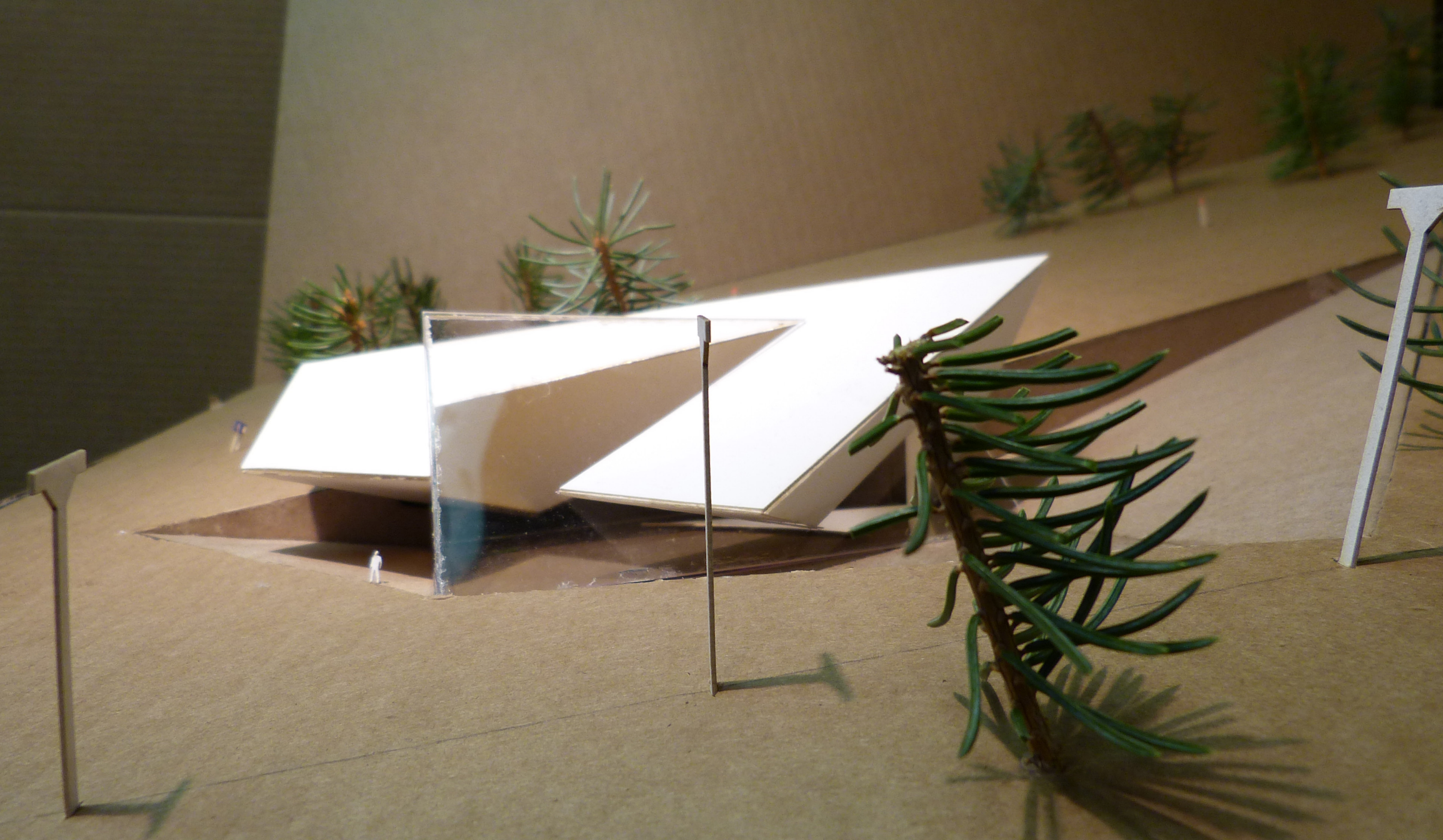


Portfolio

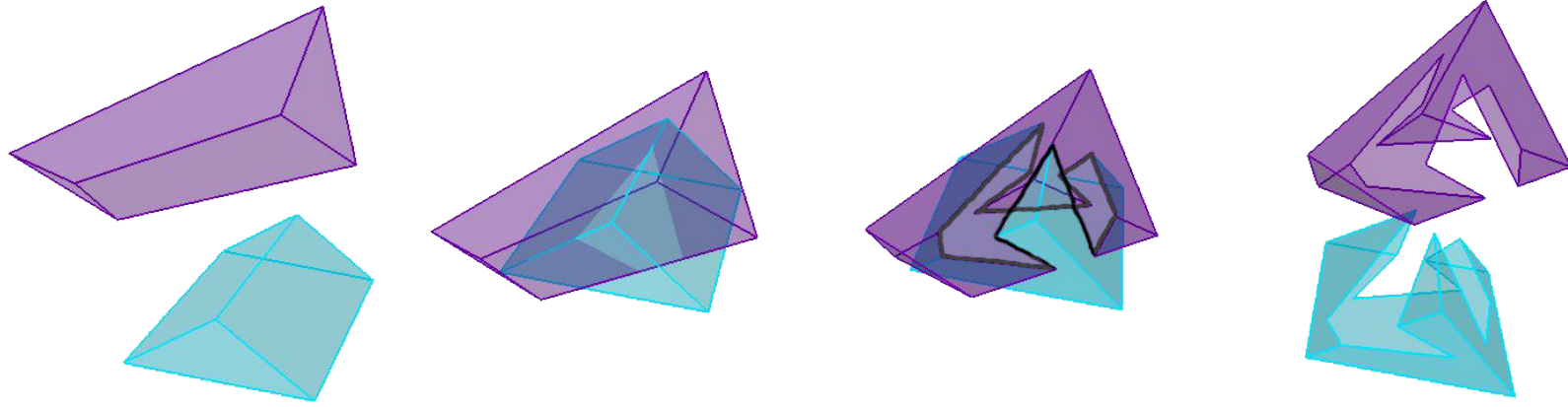
Amy Kurtycz

Table of Contents

Boolean	5
Tony Smith	11
Drawings	17
Understanding Space	23
Cellular Composition	31

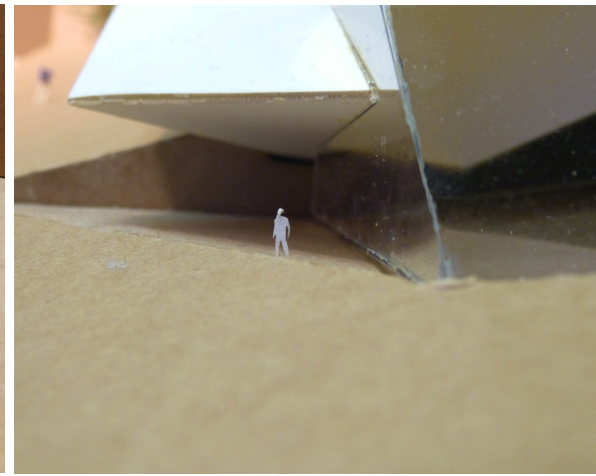
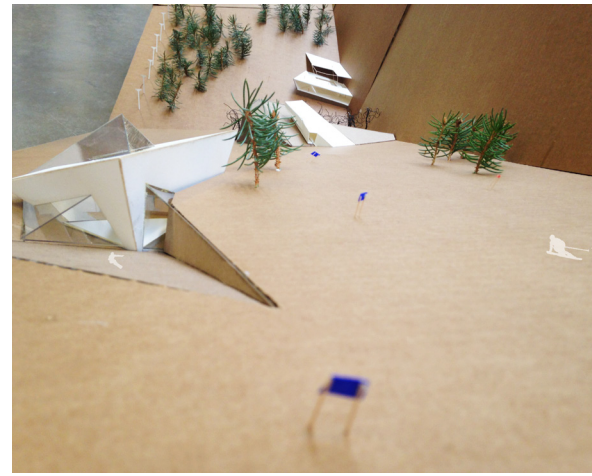


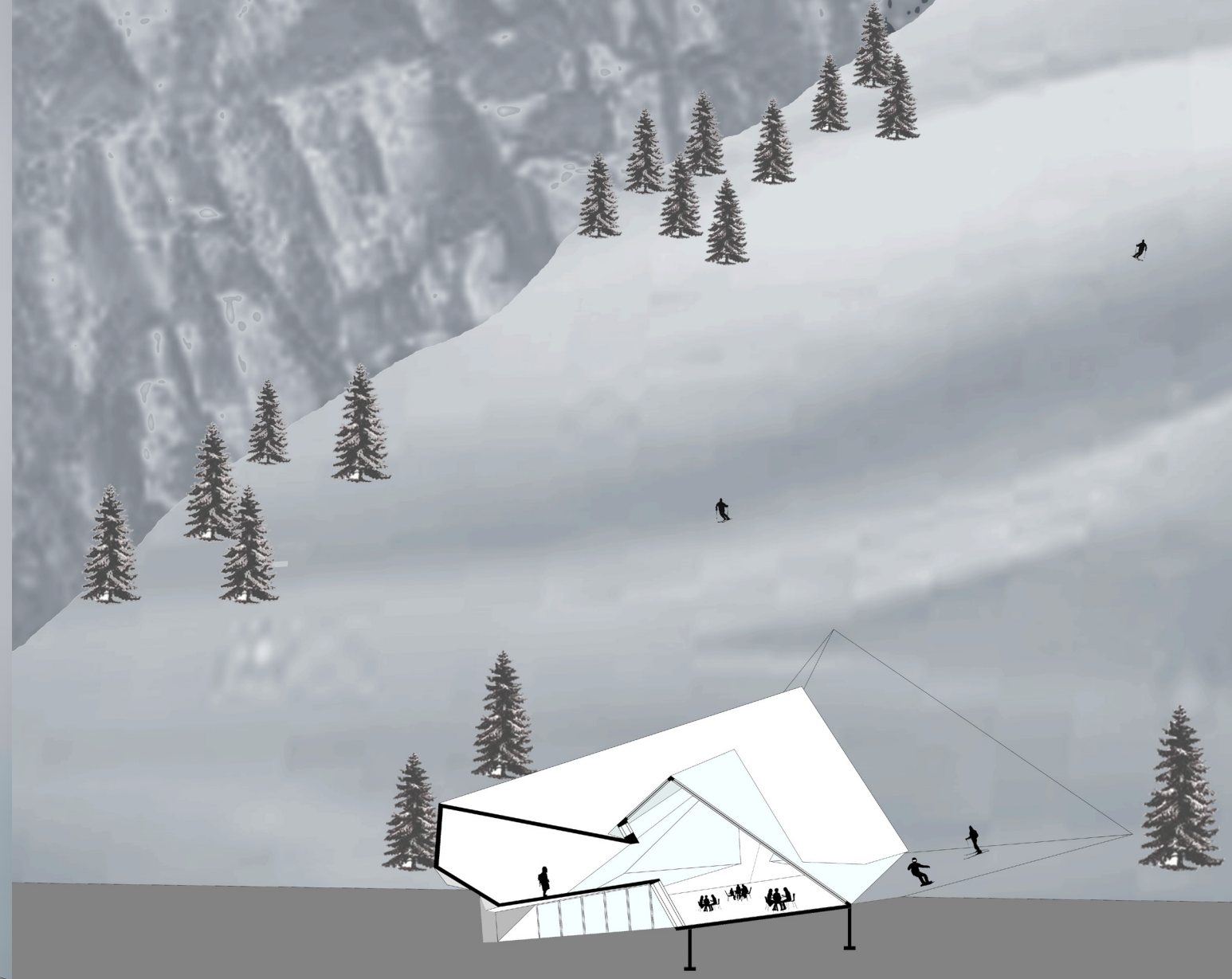
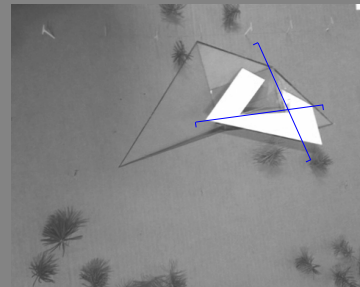
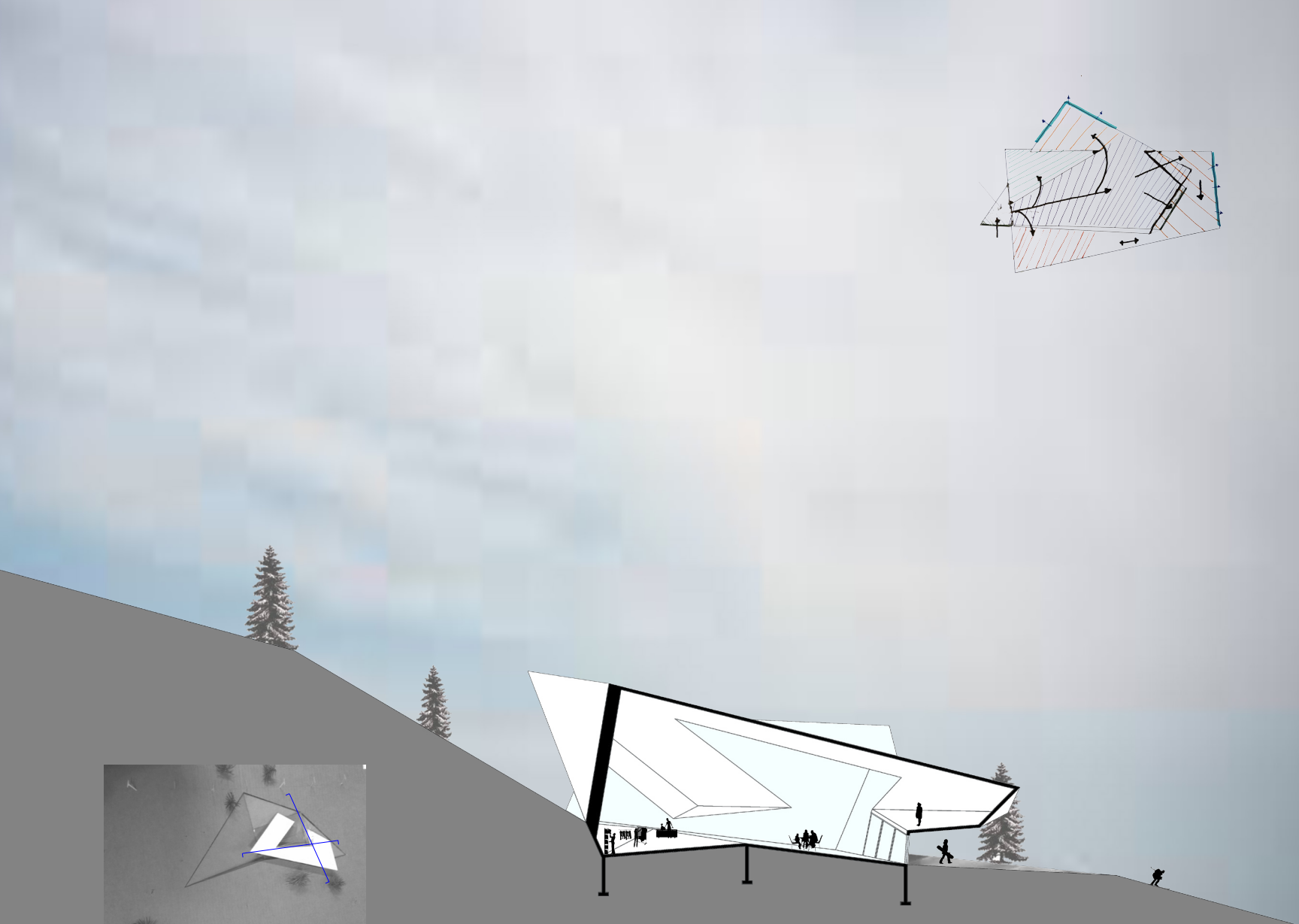
Boolean
Ski Lodge
2015



Design Development

Using boolean as a technique I discovered that triangular volumes when slightly offset their intersections created many opportunities for separate but connected spaces. The intersections create zones defined by where one volume cuts through another. The different spaces are only separated by how the volumes interact creating ramps between the two structures when they become one.



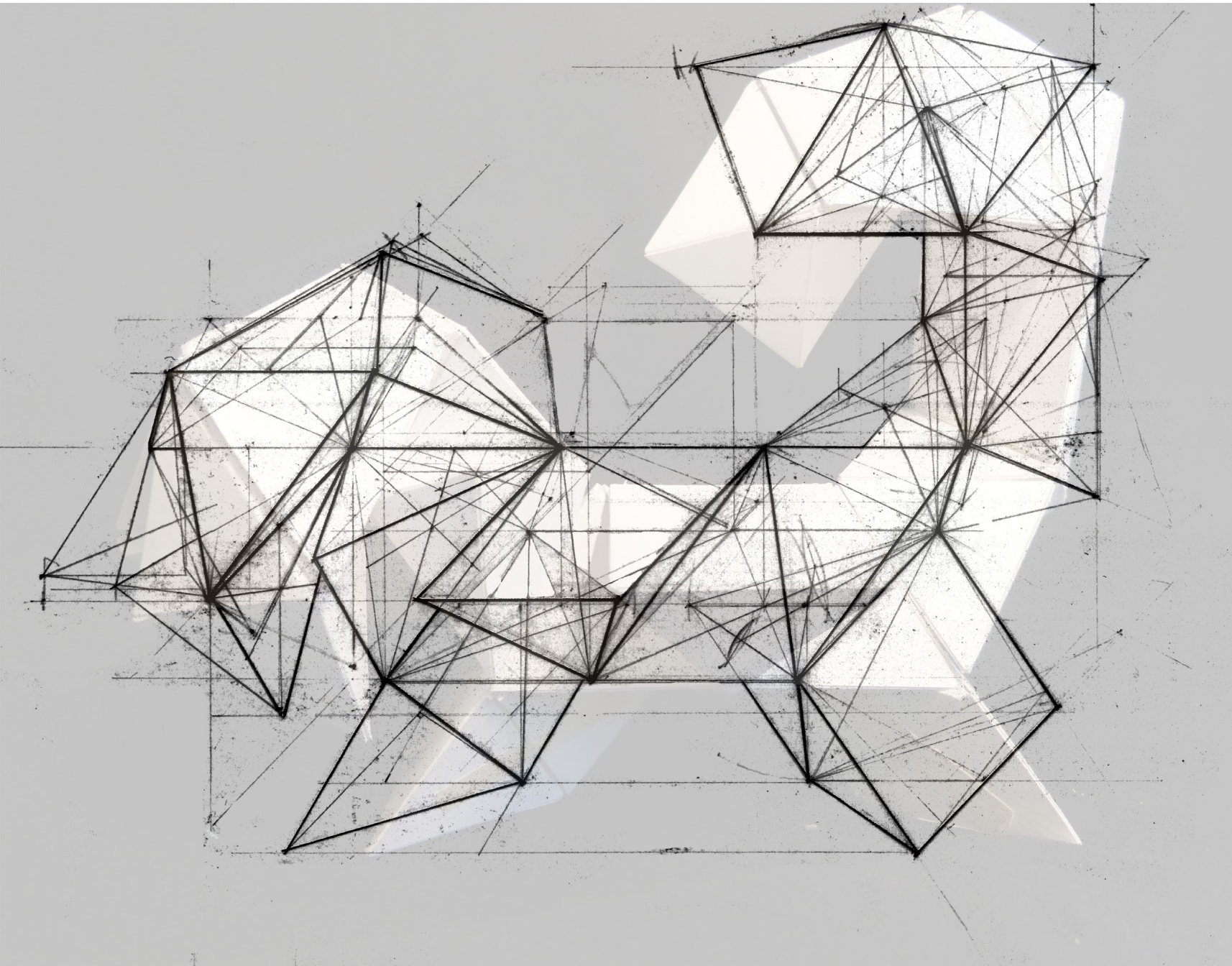




Tony Smith

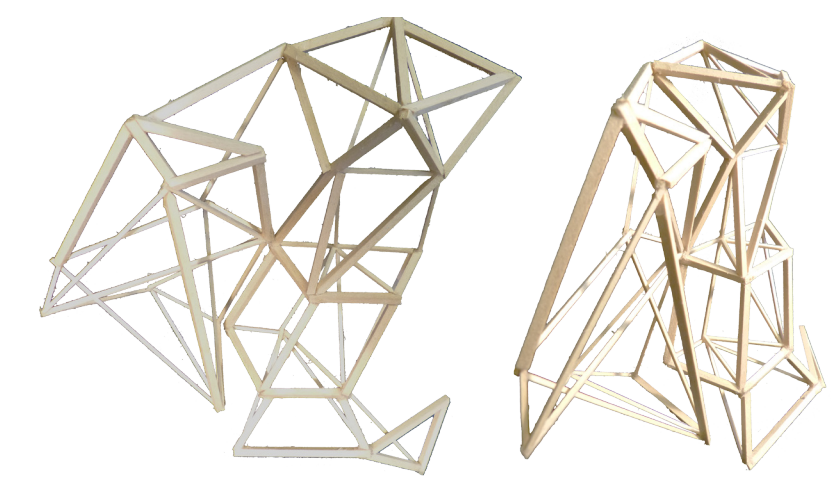
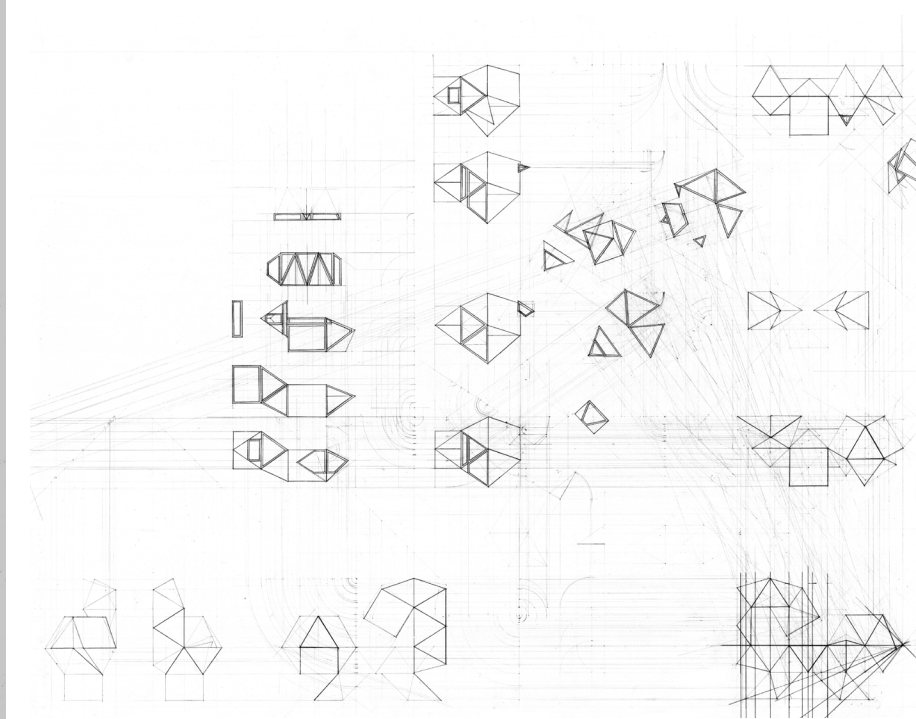
Tuberculosis House

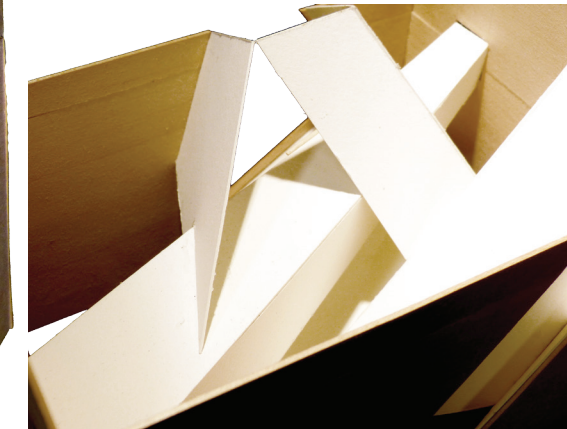
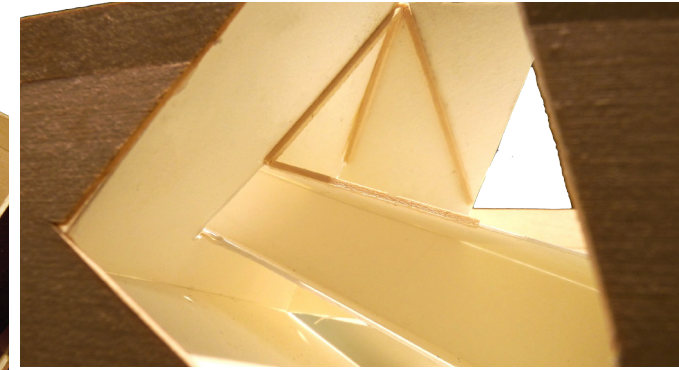
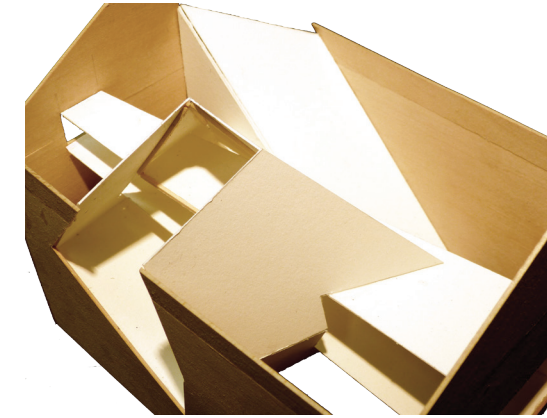
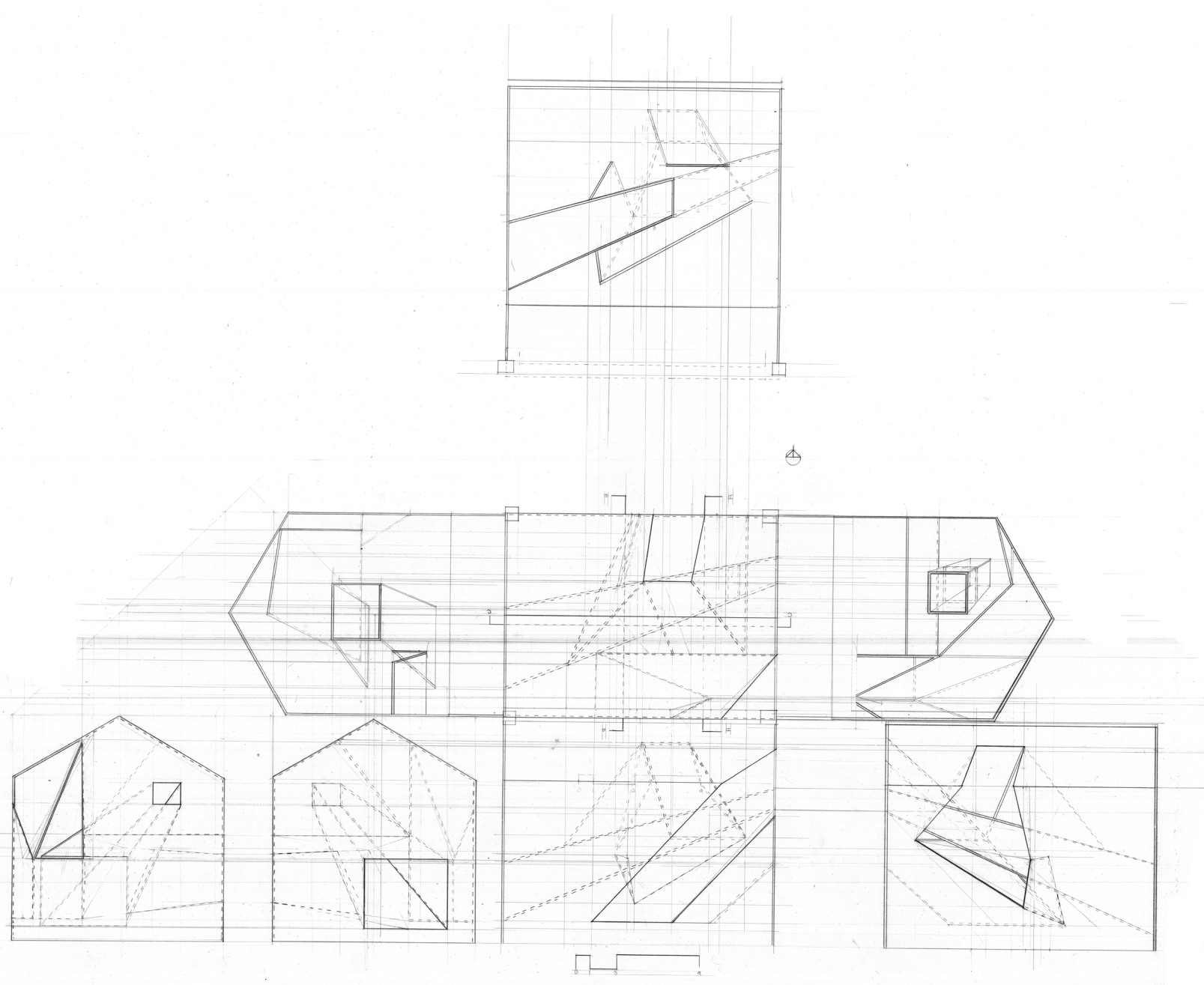
2012

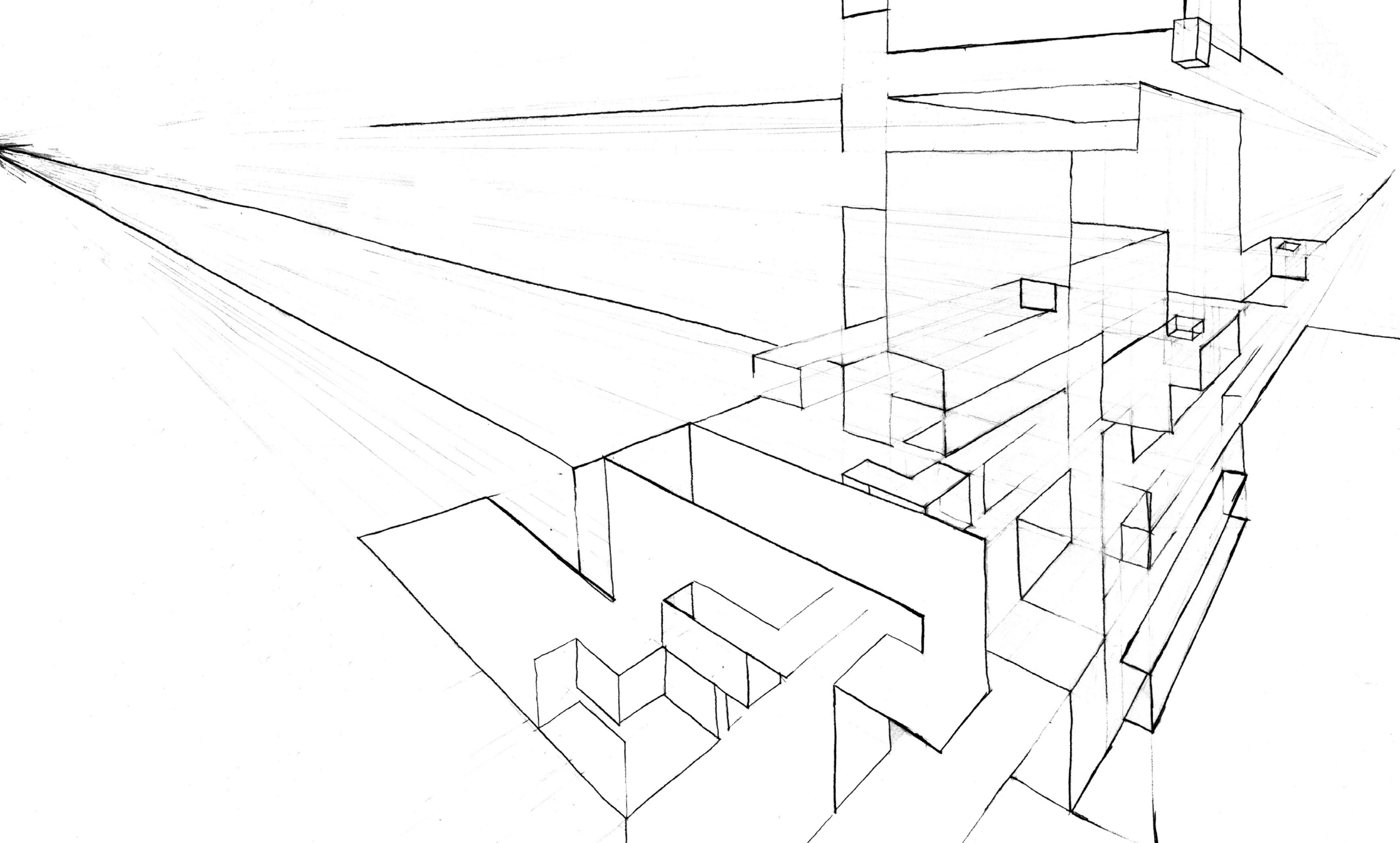


Time and Movement

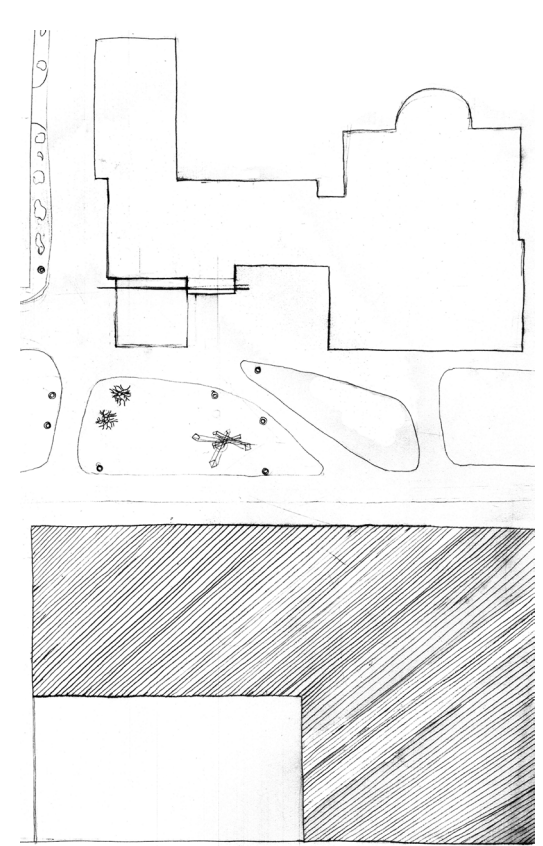
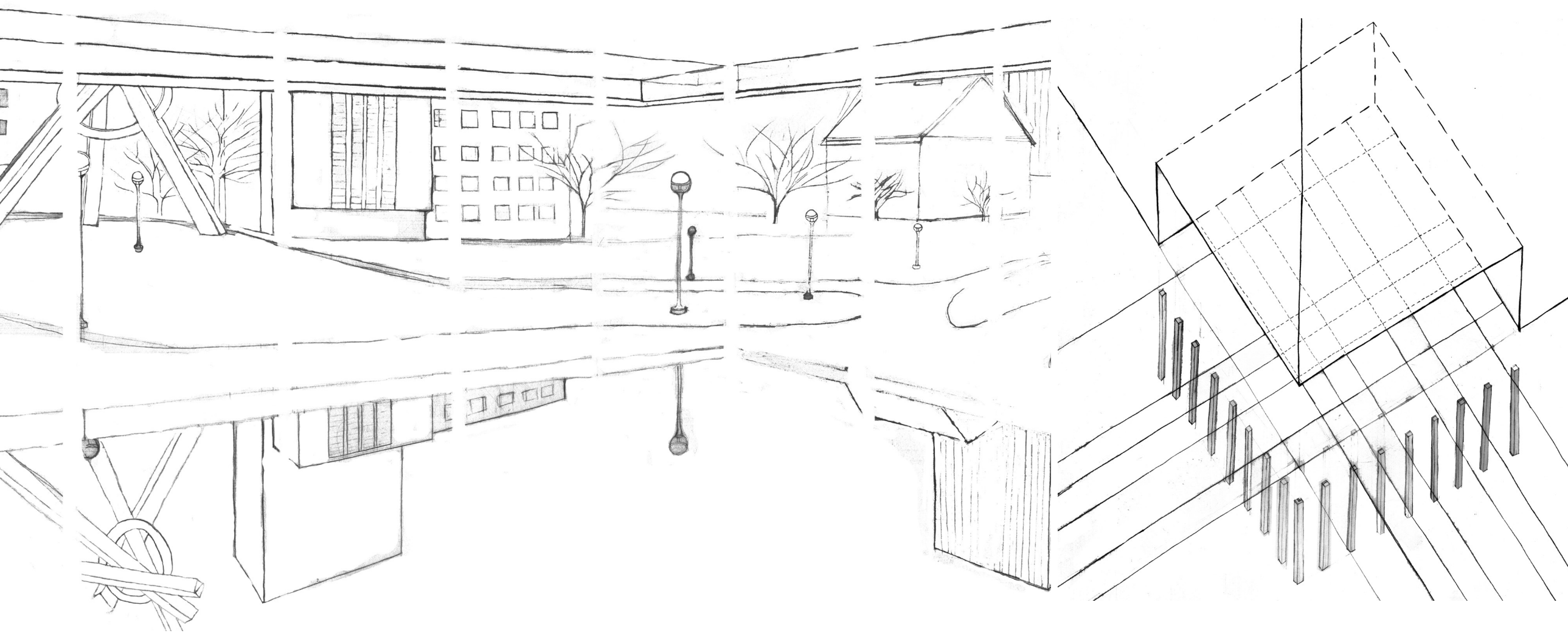
These sections are taken and organized to give a sense of speed and progression through the model.







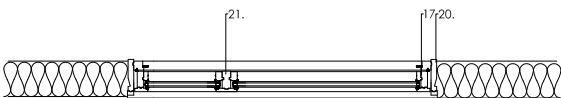
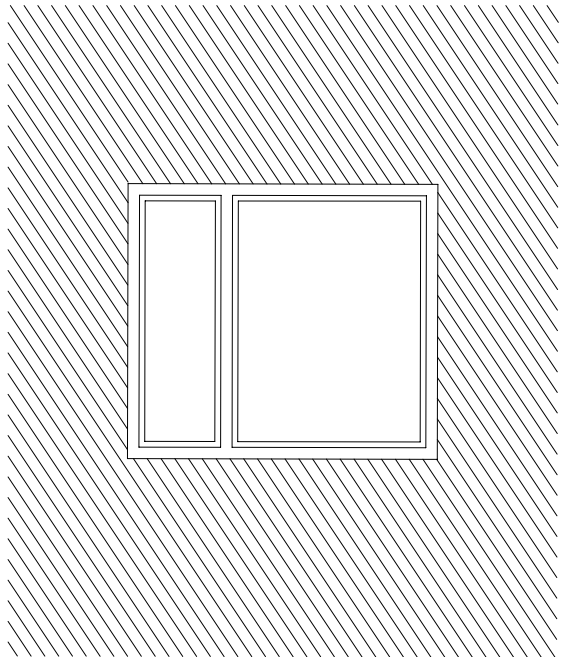
Drawing



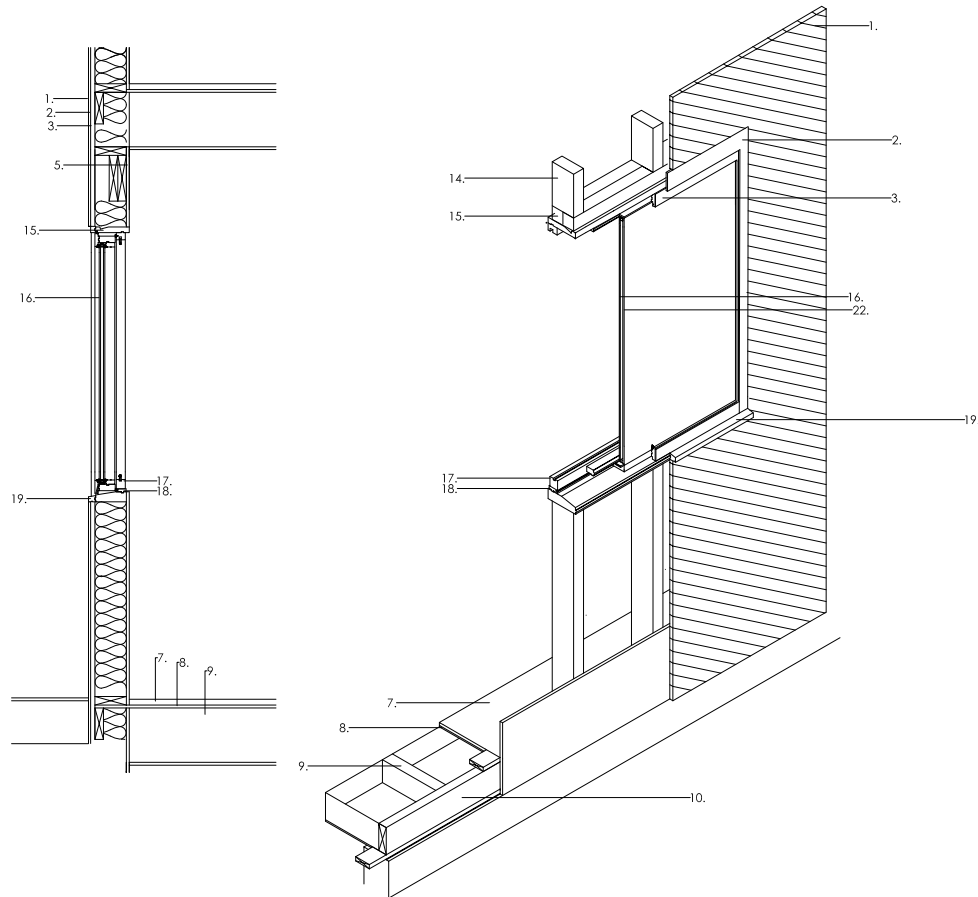
Inside vs Outside

Freehand Drawing: 2013.

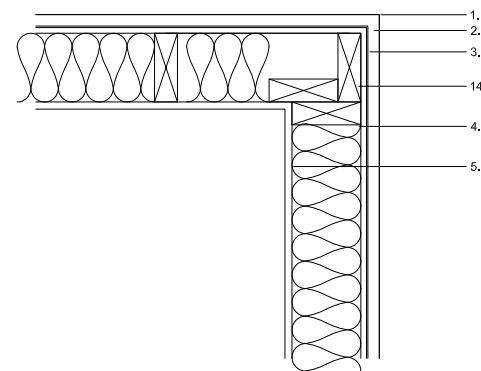
This is a study of the relationship between inside and outside at the University of Michigan Museum of Modern Art (UMMA), specifically the modern art installation room.



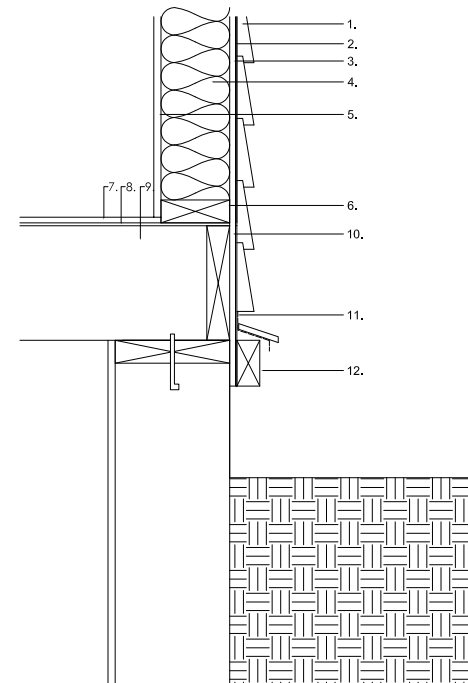
1 WINDOW DETAIL
SCALE 3/4"=1'-0"



2 WINDOW AXON
SCALE 3/4"=1'-0"



3 EXTERIOR CORNER
SCALE 1-1/2"=1'-0"



4 WATER TABLE
SCALE 1-1/2"=1'-0"

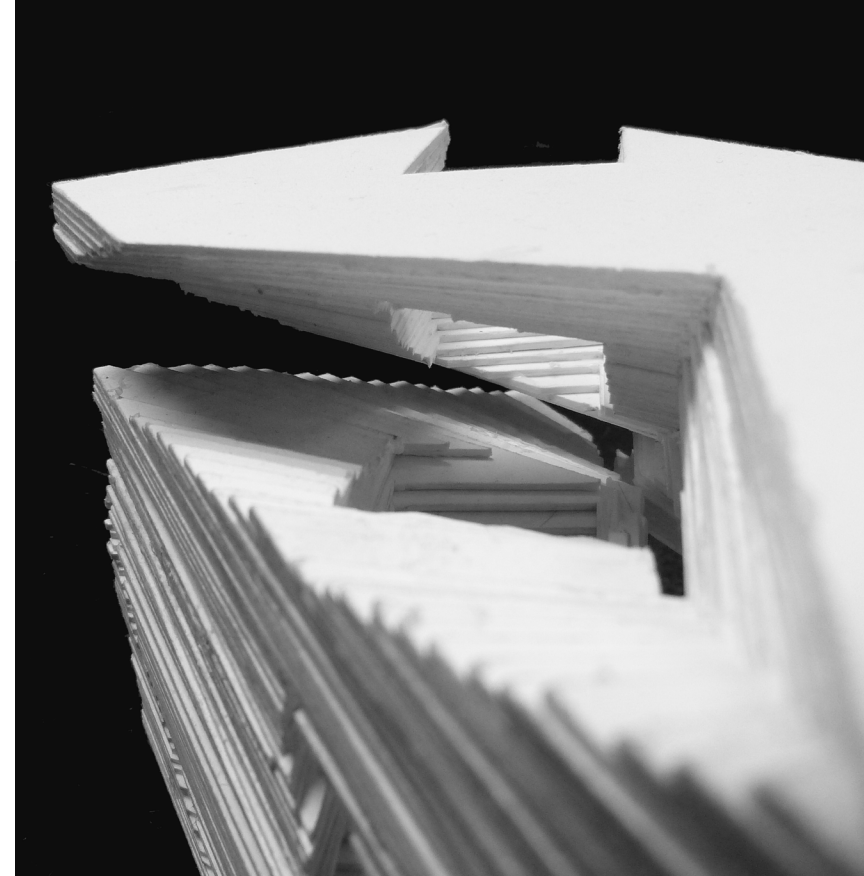
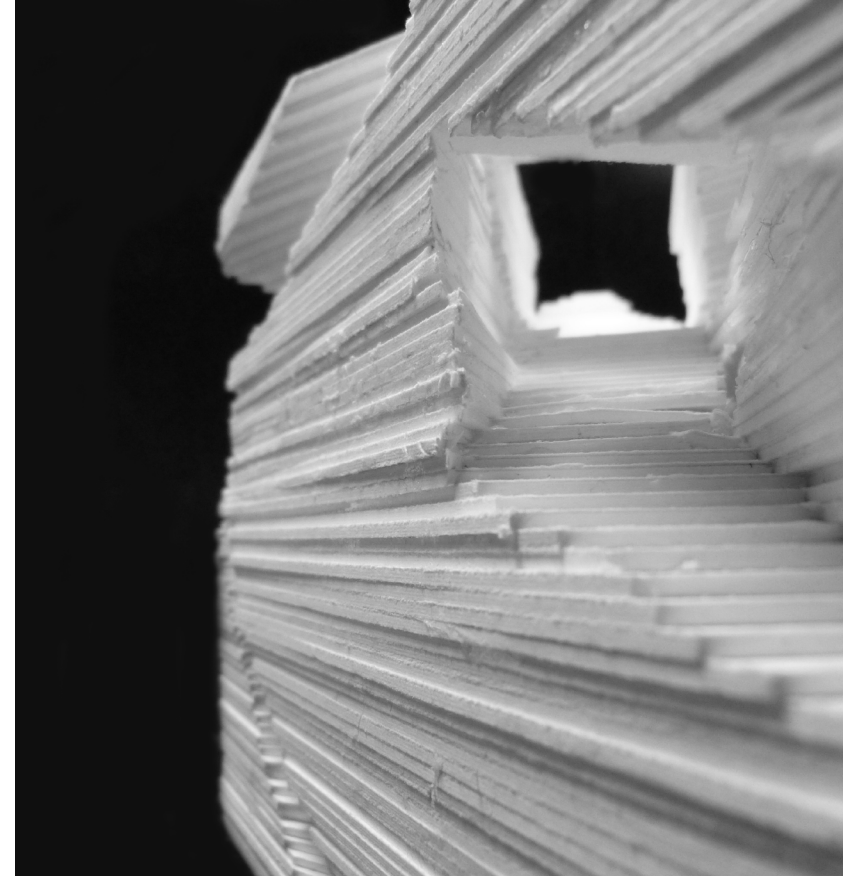
Detail Drawings Construction 1: 2014

1. Wood Siding
2. House Wrap 1/8"
3. Sheathing 1/2"
4. Insulation
5. Gypsum Board 5/8"
6. Wall Sill
7. Finished Flooring 1/2"
8. Plywood Sub Flooring
9. Floor Joist 2x12
10. Rim Joist
11. Flashing
12. Water Table
13. Foundation Wall
14. Stud 2x6
15. Head
16. Glass
17. Sash
18. Drain
19. Sill
20. Muntin
21. Jamb
22. Glazing



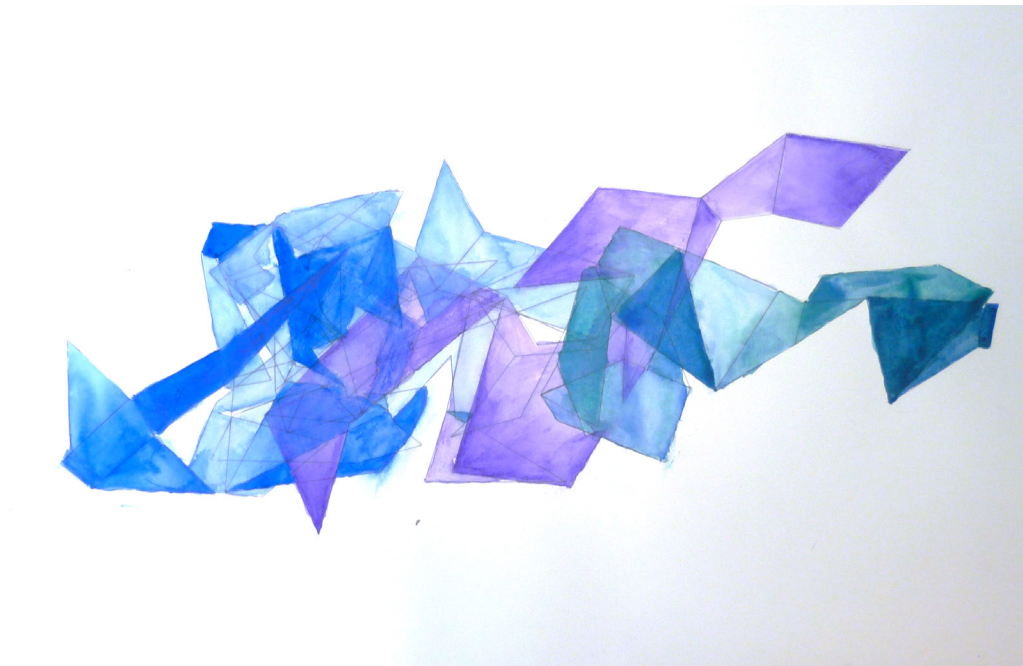
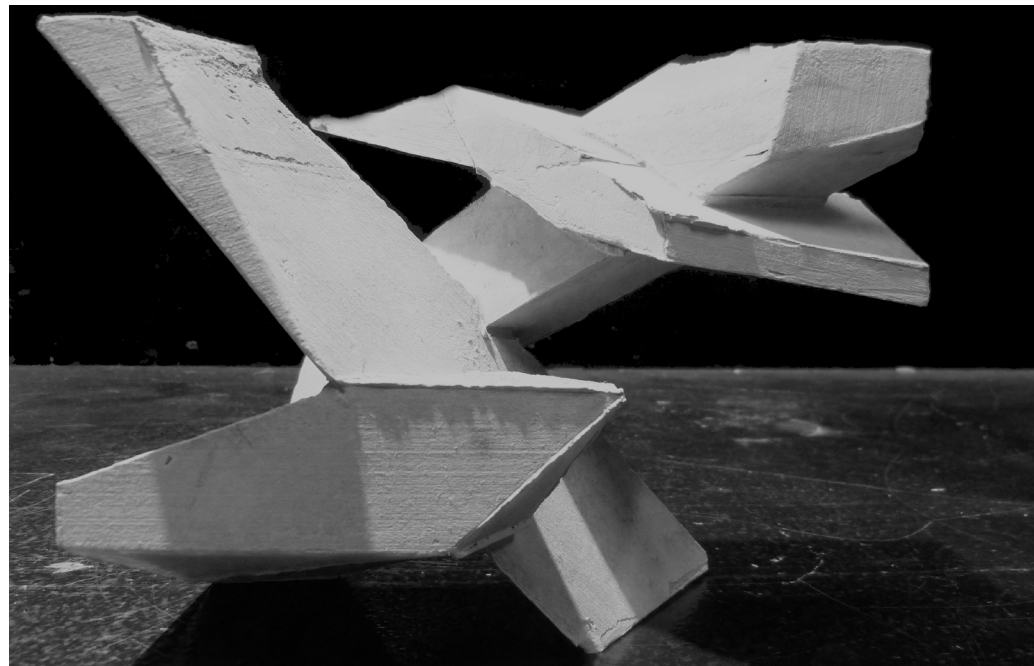
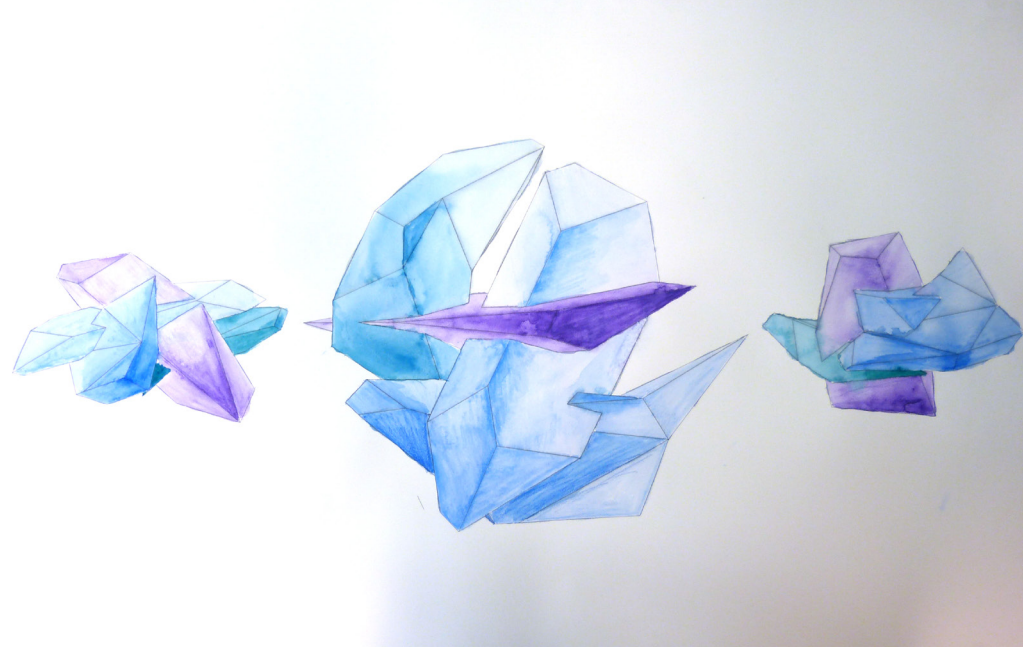
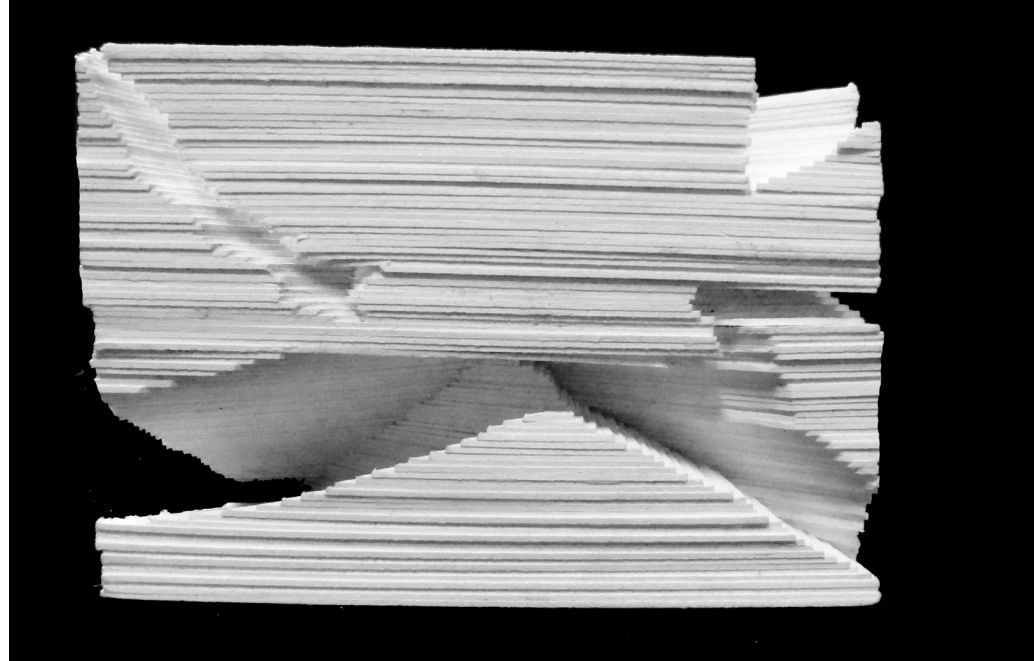
Understanding Space

Solid vs Void
2014



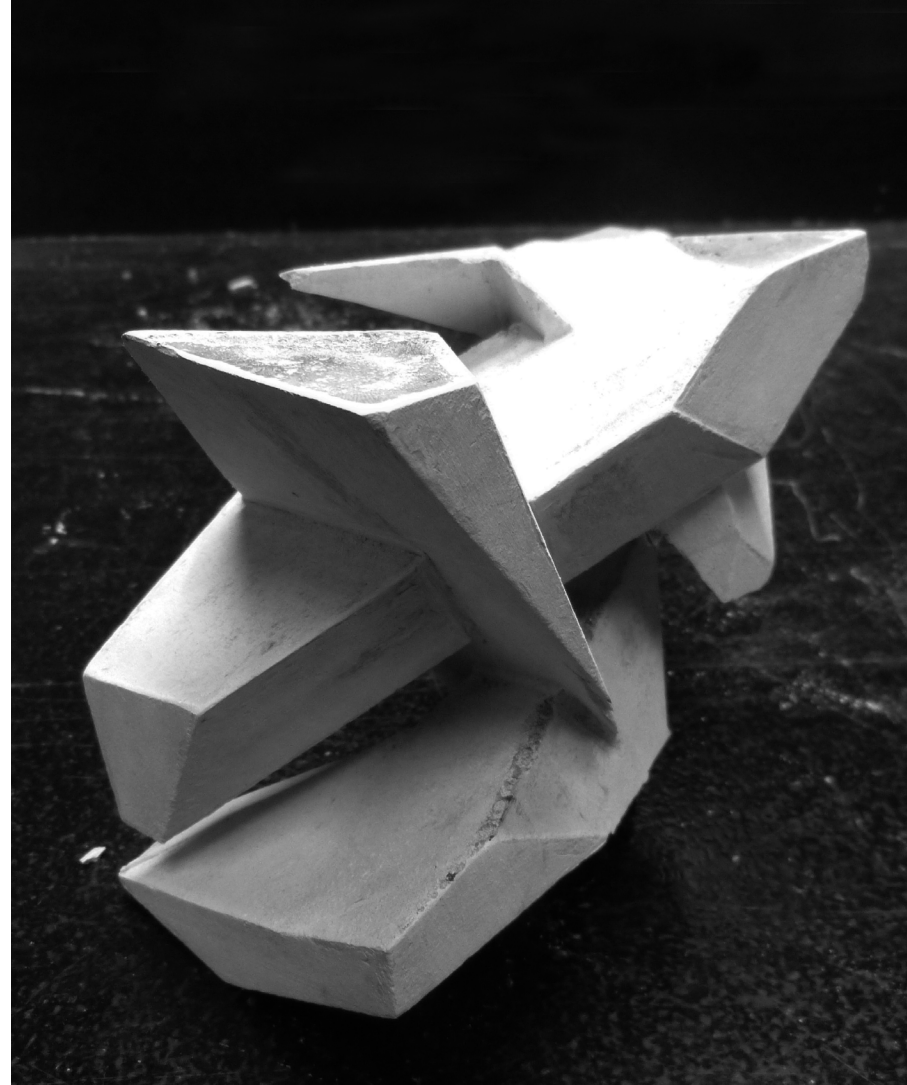
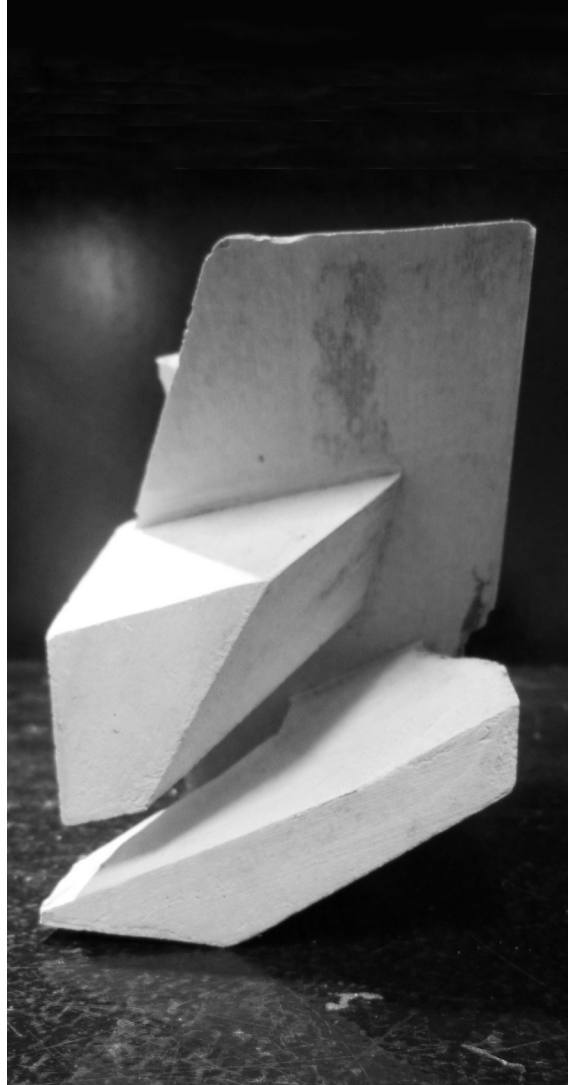
Translation

I began with the classical piece of Schubert's Arpeggione Sonata In A Minor. The first movement was slow, sweeping, and grand, while the second was more dance like and light. Translating this into a stacked model I created new spaces at the intersections of two distinct volumes independent of a third sweeping volume.



Rockite

The negative space of the stacked model is formed into a solid using rockite. The watercolor paintings on right represent the formwork of the rockite model unrolled and the final model in axon.



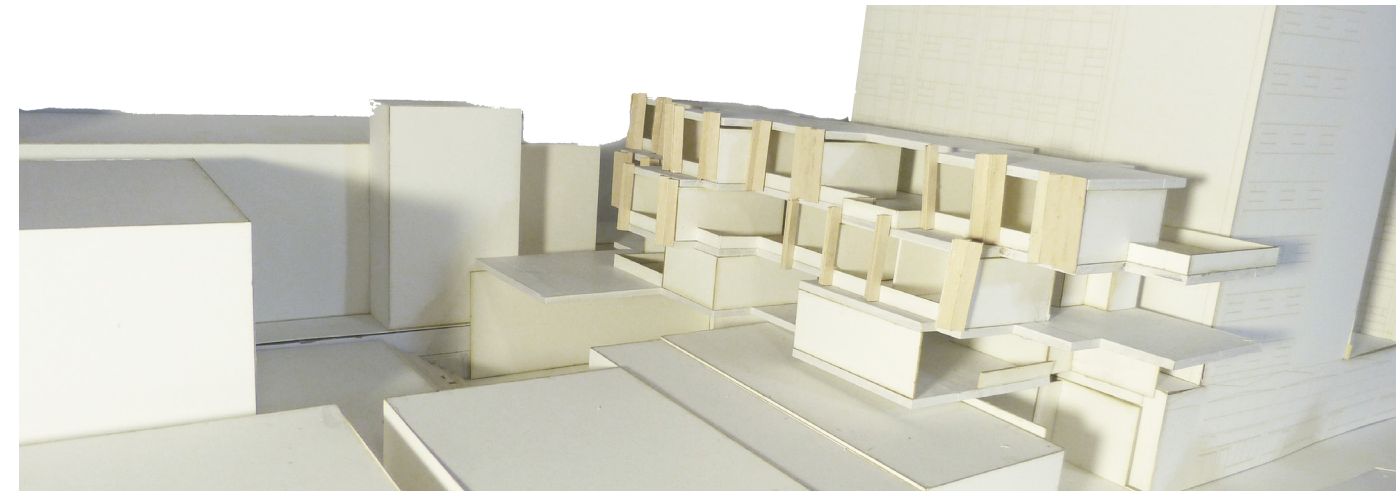
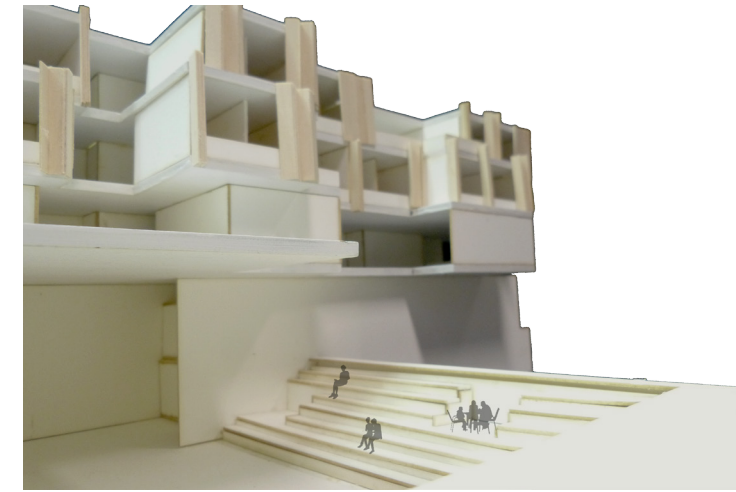
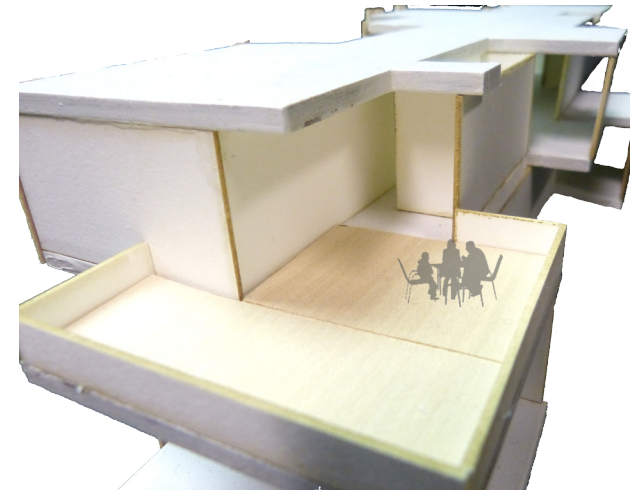


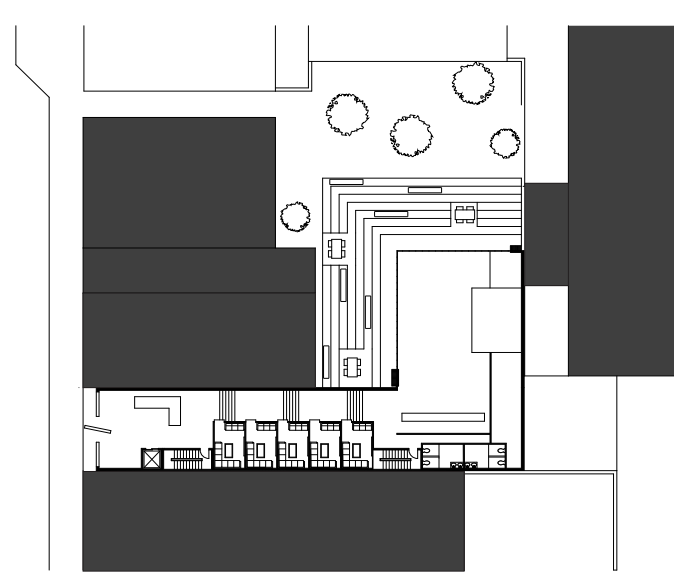
Cellular Composition

A Luxury Budget Hotel
2014

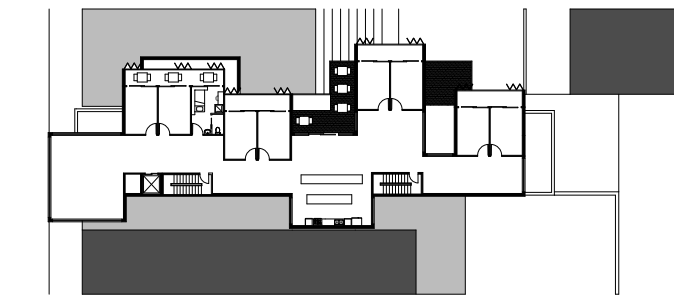
Equalizer Hotel

The hotel was created through a process of arranging and scaling a modular unit to create different views and different kinds of spaces. The first two floors are the public spaces, with private Korean karaoke rooms, a bar, and a grand staircase that leads to an outdoor courtyard performance area. As well as a Jam session room, music library and recording studio. The upper levels are hotel rooms arranged to create social interaction between guests.

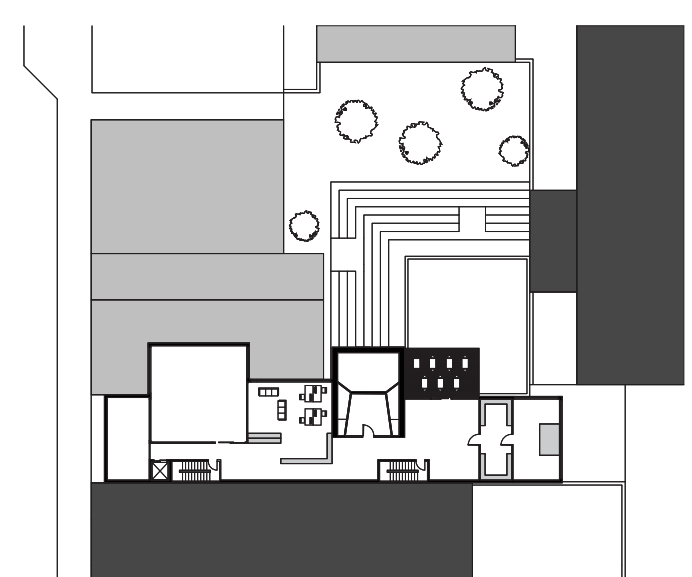




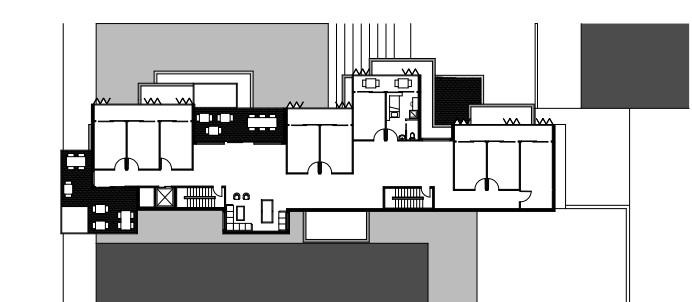
First Floor



Third Floor



Second Floor



Fourth Floor