

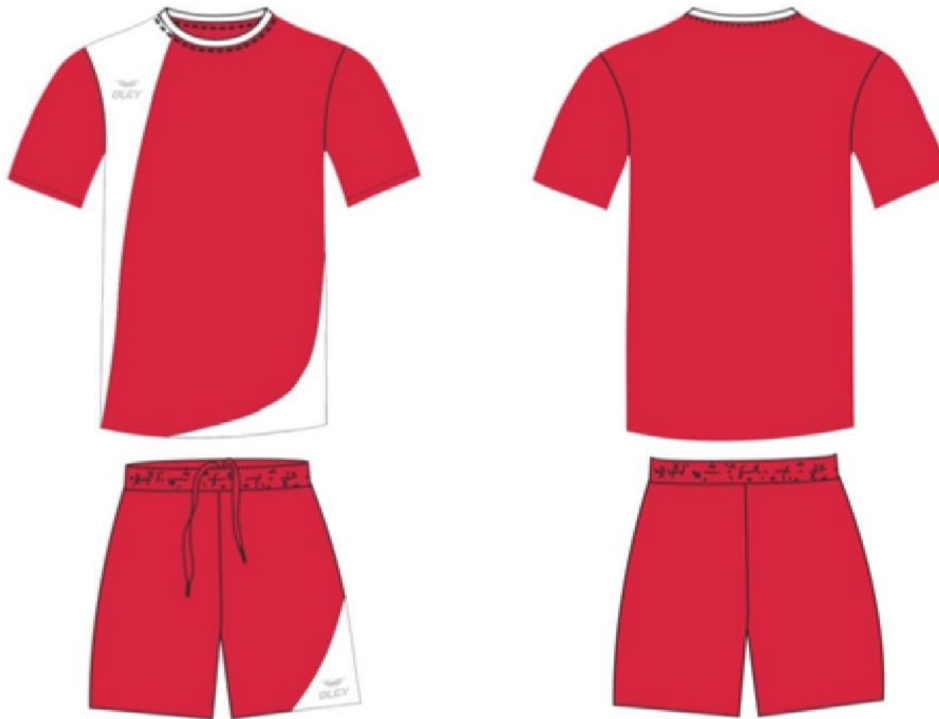
*Everytime Freedom*

  
**OLGY<sup>®</sup>**



AXIS S/S

Red-White



AXIS Short Sleeve Men's Soccer Jersey Set

- Asymmetric soccer jersey
- Smooth fabric combined with enduring stitches
- Embellished with mesh for air circulation
- Ergonomic
- Without slip
- Fabric : % 100 Micro Polyester
- Sizes : 116/128 - 140/152 - 164 S-M-L-XL-XXL

White  
Navy Blue

Sax  
White

Green  
Black

Black  
Yellow

Green  
White

White  
Black

White  
Burgundy

White  
Orange

Burgundy  
Blue

White  
Red



SOLID S/S

Red-White-Black



### SOLID Short Sleeve Men's Soccer Jersey Set

- Functional soccer jersey
- Stylish and modern cut
- Smooth fabric combined with enduring stitches
- Embellished with mesh for air circulation
- Ergonomic
- With slip
- Fabric : % 100 Micro Polyester
- Sizes : 116/128 - 140/152 - 164  
S-M-L-XL-XXL

Sax  
White-Red



Black  
White-Red



Navy Blue  
White-Red



Red  
Black-White



Green  
Red-White



Green  
Black-White



Yellow  
Sax-White



SOLID L/S

Black-White-Red



SOLID Long Sleeve Men's Soccer Jersey Set

- ☉ Functional soccer jersey
- ☉ Stylish and modern cut
- ☉ Smooth fabric combined with enduring stitches
- ☉ Embellished with mesh for air circulation
- ☉ Ergonomic
- ☉ With slip
- ☉ Fabric : % 100 Micro Polyester
- ☉ Sizes : 116/128 - 140/152 - 164  
S-M-L-XL-XXL

Sax White-Red



Red White-Black



Navy Blue White-Red



Green Black-White



Green Red-White



Green Black-White

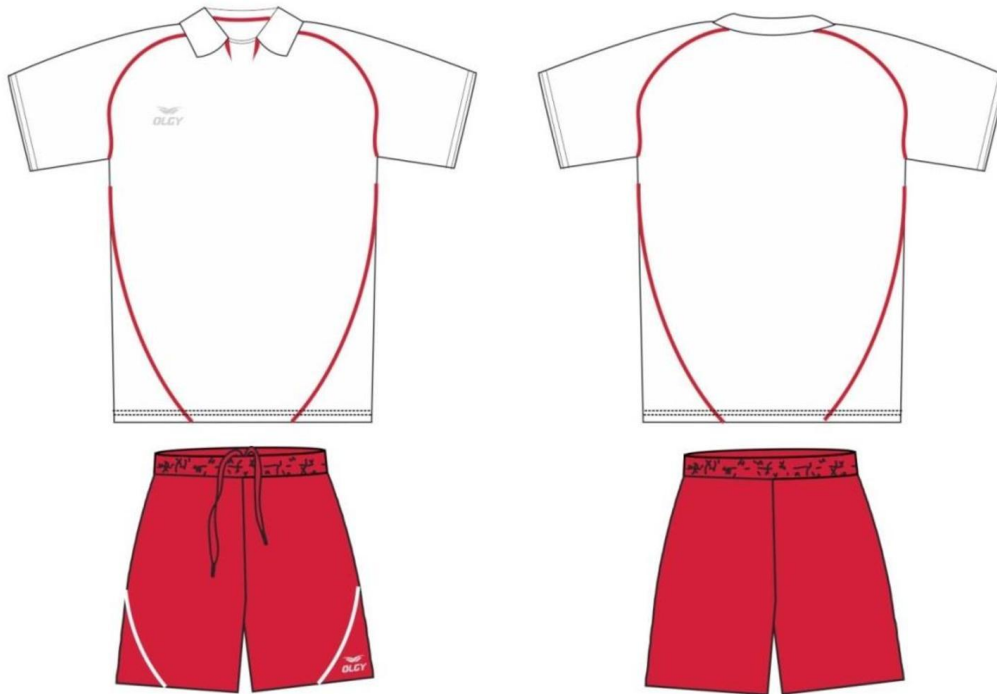


Yellow Sax-White



ROTA S/S

White-Red



### ROTA Short Sleeve Men's Soccer Jersey Set

- ☉ Modern cut soccer jersey
- ☉ Stylish collar design
- ☉ Smooth fabric combined with enduring stitches
- ☉ Sleeve hem is made of rib
- ☉ Ergonomic
- ☉ Without slip
- ☉ Fabric : % 100 Micro Polyester
- ☉ Sizes : L - XL

Yellow-Sax



White-Sax



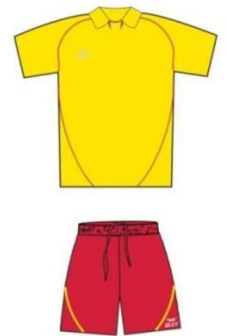
Burgundy-White



Light Blue-Navy Blue



Yellow-Red



ROTA L/S

Light Blue-Navy Blue



ROTA Long Sleeve Men's Soccer Jersey Set

- ☉ Modern cut soccer jersey
- ☉ Stylish collar design
- ☉ Smooth fabric combined with enduring stitches
- ☉ Sleeve hem is made of rib
- ☉ Ergonomic
- ☉ Without slip
- ☉ Fabric : % 100 Micro Polyester
- ☉ Sizes : L - XL

Yellow-Sax

Burgundy-White

White-Red

White-Sax

Yellow-Red



LINE S/S

Red-White-Black



### LINE Short Sleeve Men's Soccer Jersey Set

- Striped soccer jersey
- Smooth fabric combined with enduring stitches
- Embellished with mesh for air circulation
- Ergonomic short
- Without slip
- Fabric : % 100 Micro Polyester
- Sizes : S-M-L-XL-XXL

Sax  
White-Black



Red  
Black-White



Black  
White-Red



Yellow  
Black-White



Green  
White-Black



Blue  
White-Black



BUMERANG

Phosphorus Green



Orange-Navy



Black-Phosphorus Pink



### BUMERANG Goalkeeper Jersey

- Asymmetric goalkeeper jersey
- Smooth fabric combined with enduring stitches
- Shock-absorbing materials are used in the elbow parts and calf.
- Material : %100 Polyester - Micro
- Sizes: 116 - 128 - 140 -152 - 164  
S-M-L-XL-XXL

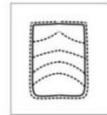




### DOME Goalkeeper Jersey

- Asymmetric goalkeeper jersey
- Smooth fabric combined with enduring stitches
- Shock-absorbing materials are used in the elbow parts and calf.
- Material : %100 Polyester - Micro
- Sizes : S-M-L-XL-XXL

Yellow-Black



Blue  
Navy



Phosphorus Green  
Black



DOME

SOLID  
BASKETBALL MEN SET

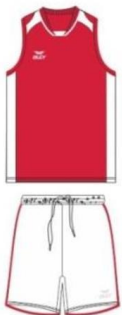
Yellow-Black



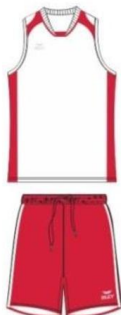
### SOLID Basketball Men Set

- ☉ Durable Fabric,Ergonomic Design
- ☉ Mesh Fabric is used on crotch for air circulation
- ☉ Without slip
- ☉ Fabric : % 100 Micro Polyester
- ☉ Sizes : M-L-XL-XXL-XXXL

Red  
White



White  
Red



White  
Black



Yellow  
Red



Navy Blue  
White



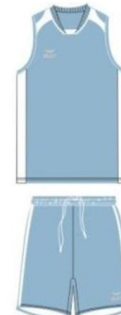
Blue  
Burgundy



Yellow  
Navy Blue



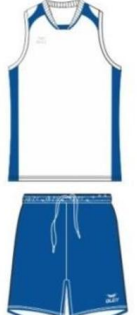
Blue  
White



Green  
White



White  
Sax





### ROLLER Baseball Caps

- Embroidery logo
- Velcro is used at the back side
- Fabric : Woven
- Sizes : Standart

Black



Navy Blue



Gray



ROLLER

TEAM  
TRAINING VEST

Phosphorus Yellow-Black



### SOCCER Training Vest

- It will not interfere movement during training with its comfortable design
- With its light and strong structure it interferes smearing and it helps you to train safely
- Material : %100 Polyester - Micro
- Sizes : XS-S-M-L-XL-XXL

Phosphorus Orange  
Black



Phosphorus Green  
Black



Red  
Black



JETA | RIND



White



Black



### JETA Undergarment

- ☉ With special type of knitting technique, air circulation is provided
- ☉ Seamless
- ☉ Material : % 74 Polyemide-%22 Polyester-%4 Elasthane
- ☉ Sizes : M-L-XL-XXL

### RIND Tight

- ☉ Lycra supreme
- ☉ Provide comfortable sport with the help of its ergonomic cut
- ☉ Material : % 92 Polyester-%8 Elasthane
- ☉ Sizes : M-L-XL-XXL-XXXL

Navy



Black



Red



Sax





KEYNES

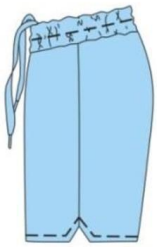
Black



KEYNES Men's Basic  
Training Short

- ☉ Asymmetric short
- ☉ Smooth fabric combined with enduring stitches
- ☉ Fabric : % 100 Cotton Compact
- ☉ Sizes : 116-128-140-152-164  
S-M-L-XL-XXL

Light Blue



Burgundy



Sax



Red



Green



Orange





CURVE  
TRAINING T-SHIRT

Navy Blue-Blue-White



### CURVE Training T-Shirt

- ☉ Light, resistant and ergonomic fabric
- ☉ Mesh Fabric is used for air circulation
- ☉ Fabric: % 100 Polyester
- ☉ Sizes : S-M-L-XL-XXL-XXXL

Black  
Yellow-White



Red  
Black-White



L.Grey  
Anthracite-White



Black  
Green-White



RADIUS T-SHIRT



Red



RADIUS Short Sleeve T-Shirt

- Fabric : % 100 Cotton Compact
- Sizes : 116/128 - 140/152 - 164  
S-M-L-XL-XXL

White

Gray

Green

Light Blue

Sax

Navy Blue

Black

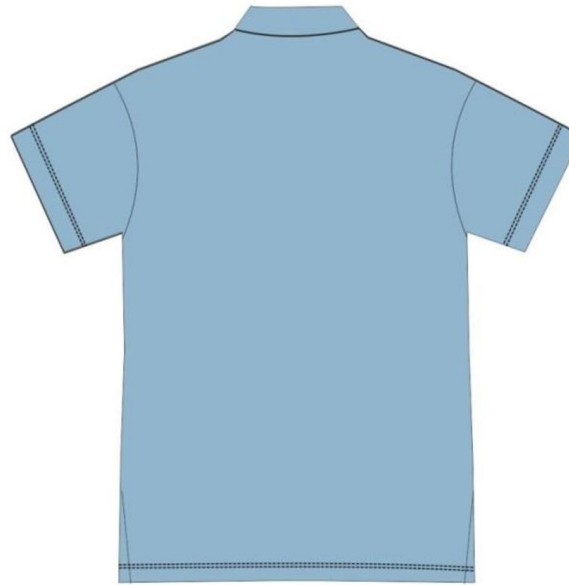
Yellow





STEELY  
POLO PIQUE T-SHIRT

Light Blue



### MEN'S Polo Pique T-Shirt

- Fabric : % 100 Cotton Combed
- Classic Fit
- 3 button placked, name of olgy buttons
- Ribbed collar, split hem
- OlgY embroidery on chest
- Machine wash ; imported
- Sizes : 116-128-140-152-164  
S-M-L-XL-XXL

White

Gray

Green

Red

Sax

Navy Blue

Black

Yellow



LEVE T-SHIRT



Red



### LEVE Special T-Shirt

- ☉ Different knitting techniques were used to form a beathable fabric
- ☉ Material : % 100 Polyemide
- ☉ Sizes :M-L-XL-XXL

Royal Blue



White



Black



CHARISMA POLO T-SHIRT



Naphtha Green-Cream



CHARISMA Polo Pique T-Shirt

- Fabric : % 100 Cotton Combed
- Classic Fit
- 3 button placked,name of OlgY buttons
- Ribbed collar,split hem
- OlgY embroidery on chest
- Collar and Sleeves band with contrast stripes
- Sizes : S-M-L-XL-XXL-XXXL

Black-Grey



White-Navy Blue



D.Red-Navy Blue



Blue-Cream





TRAINING SOCKS



**WESP**  
**LONG TENNIS SOCKS**

Artikel No: OS-9001

80 % Cotton  
17 % Polyamid  
3 % Lycra



**FUND**  
**SHORT TENNIS SOCKS**

Artikel No: OS-9002

80 % Cotton  
17 % Polyamid  
3 % Lycra



**MIRA**  
**SHORT SOCKS**

Artikel No: OS-9003

80 % Cotton  
17 % Polyamid  
3 % Lycra



PIRAMID

White-Black-Red

1



PIRAMID Men's  
Training Tracksuit Set

- Made of light and ergonomic fabric
- Stylish design by using contrast colors on stitches
- For comfort elastic cord is used on hemline
- For air circulation mesh undercoat is used.
- Reflector print logo on chest and leg
- Zipper is used on the lowest part of a trouser leg
- Fabric : % 100 Polyester
- Fabric for undercoat : % 100 Polyester
- Sizes : S-M-L-XL-XXL

Indigo  
Navy Blue-Gray

Green  
Black-White

Light Gray  
Anthracite-Orange

Red  
Black-White



2



3



4



5



DOUPLEPI

Black-Orange-Light Gray

1



DOUPLEPI Men's  
Training Tracksuit Set

- ☉ Made of light and ergonomic fay micro fabric
- ☉ For air circulation mesh undercoat is used
- ☉ For comfort elastic cord is used on hemline
- ☉ Embroidered logo on chest and left leg
- ☉ Zipper is used on the lowest part of a trouser leg
- ☉ Fabric : % 100 Polyester
- ☉ Fabric for undercoat : % 100 Polyester
- ☉ Sizes : S-M-L-XL-XXL

Indigo  
Dark Gray



2

Navy Blue  
Red-White



3

CURVE

Dark Gray-Black-Red

1



### CURVE Men's Training Tracksuit Set

- Made of light and ergonomic fabric
- Collar, cuff and hemline is made of soft knitwear
- Embroidery logo is used on chest, neck and lowest part of the left leg
- For air circulation mesh undercoat is used
- Zipper is used on the lowest part of a trouser leg
- Fabric : % 100 Polyester
- Fabric for undercoat : % 100 Polyester
- Sizes : 116/128 140/152 164

S-M-L-XL-XXL



Navy Blue  
White-Indigo



2

White  
Navy Blue-Orange



3





POSH-M Men's  
Training Tracksuit Set

- Made of light and ergonomic micro fabric
- Stylish design by using contrast colors on stitches
- Collar , cuff and hemline is made of soft knitwear
- Contrast color bias tape is used on hemline and cuff
- For air circulation mesh undercoat is used.
- Zipper is used on the lowest part of a trouser leg
- Fabric : % 100 Polyester
- Fabric for undercoat : % 100 Polyester
- Sizes : 116/128 140/152 164  
The colour is 3 not produce for children sizes
- Sizes : S-M-L-XL-XXL  
The colour is 4 not produce for adult sizes

Navy Blue-Indigo

1



Black-Ecru

Anthracite-Gray

Navy -Red



2



3



4

POSH - M



Light Gray-Black-Dark Gray-White

1



DOLCH Men's Training Tracksuit Set

- ☉ Made of micro polyester
- ☉ Chain patterned
- ☉ For comfort elastic cord is used on hemline
- ☉ Embroidery logo is used on chest, neck and left leg
- ☉ For air circulation mesh undercoat is used.
- ☉ Zipper is used on the lowest part of a trouser leg
- ☉ Fabric : % 100 Polyester
- ☉ Fabric for undercoat : % 100 Polyester
- ☉ Sizes : S-M-L-XL-XXL

Navy Blue  
Light Gray-White-Red



2

Light Gray  
Navy Blue-White-Indigo



3

TUNA

Navy-White

1



### TUNA Men's Tracksuit Set

- Drop figured micro polyester fabric
- Collar,cuff and hemline is made of soft knitwear
- For air circulation mesh undercoat is used
- Zipper is used on the lowest part of a trouser leg
- Fabric : % 100 Polyester
- Fabric for undercoat : % 100 Polyester
- Sizes : S-M-L-XL-XXL

Black-White

Anthracite-Light Gray



2



3

DICLE

White-Black

1



### DICLE Men's Tracksuit Set

- Drop figured micro polyester fabric
- Hemline and cuff is made of knitting ribbing
- Special stitches on sides
- For air circulation mesh undercoat is used
- Zipper is used on the lowest part of a trouser leg
- Fabric : % 100 Polyester
- Fabric for undercoat : % 100 Polyester
- Sizes : 96-104-116-128-140-152-164  
XS-S-M-L-XL-XXL

Red-Black



2

Anthracite-Light Gray



3

Orange-Black-White



4

Sax-Navy Blue-White



5



Red-Black

1



### CAPE Men's Tracksuit Set

- ☉ Light and ergonomic micro set
- ☉ Modern design with reflektor logo print and contrast colours
- ☉ Collar, cuff and hemline is made of soft knitwear
- ☉ For air circulation mesh undercoat is used
- ☉ Zipper is used on the lowest part of a trouser leg
- ☉ Fabric : % 100 Polyester
- ☉ Fabric for undercoat : % 100 Polyester
- ☉ Sizes : 96-104-116-128-140-152-164  
XS-S-M-L-XL-XXL

Light Gray-Anthracite



2

Black-White



3

Turquoise-Anthracite



4



TIRE

Navy - Red

1



### TIRE Men's Tracksuit Set

- Special drop figured micro polyester fabric
- For comfort elastic cordon is used on hemline contrast colours
- Cuff is name of knitting ribbing
- For air circulation mesh undercoat is used
- Zipper is used on the lowest trouser leg
- Fabric : % 100 Polyester
- Fabric for undercoat : % 100 Polyester
- Sizes : S-M-L-XL-XXL

Anthracite-Mustard

Black-Light Gray



2



3



Black-Orange-Light Gray



### DOUPLEPI Men's Training Tracksuit Pant

- Made of light and ergonomic fay micro fabric
- For air circulation mesh undercoat is used.
- Embroidered logo on left leg
- Zipper is used on the lowest part of a trouser leg
- Fabric : % 100 Polyester
- Fabric for undercoat : % 100 Polyester
- Sizes : S-M-L-XL-XXL

Indigo  
Dark Gray

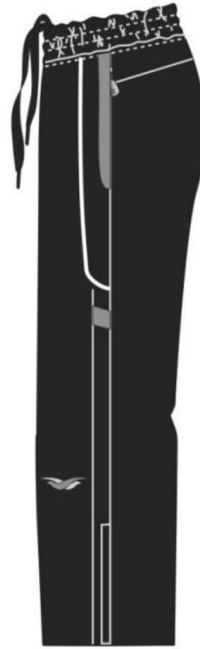


Navy Blue  
Red-White





Black-White-Light Gray-Dark Gray



DOLCH Men's Training Tracksuit Pant

- Made of micro polyester
- Chain patterned
- Embroidery logo is used on left leg
- For air circulation mesh undercoat is used
- Zipper is used on the lowest part of a trouser leg
- Fabric : % 100 Polyester
- Fabric for undercoat : % 100 Polyester
- Sizes : S-M-L-XL-XXL

Navy Blue - Light Gray - White-Red







POSH-M

Navy Blue-Indigo



POSH-M Men's  
Training Tracksuit Pant

- Made of light and ergonomic micro fabric
- Stylish design by using contrast colors on stitches
- Embroidered logo on chest , neck and waist
- For air circulation mesh undercoat is used
- Zipper is used on the lowest part of a trouser leg
- Fabric : % 100 Polyester
- Fabric for undercoat : % 100 Polyester
- Sizes : S-M-L-XL-XXL

Black-Ecru



Anthracite-Gray



VIRAJ

Salmon-Indigo-White



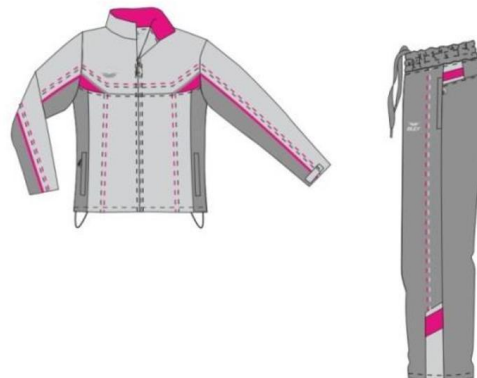
### VIRAJ Women's Training Tracksuit Set

- Stylish design by using contrast colors on stitches
- Made of light ergonomic micro fabric
- For air circulation mesh undercoat is used
- For comfort elastic cord is used on hemline
- Velcro is used on cuffs
- Reflector logo on chest and left leg
- Fabric : % 100 Polyester
- Fabric for undercoat : % 100 Polyester
- Sizes : 36-38-40-42-44

Turquoise  
Navy Blue-White



Light Gray  
Dark Gray - Fuchsia



POSH-F

Red-Navy Blue



POSH-F Women's  
Training Tracksuit Set

- Made of light and ergonomic micro fabric
- Stylish design by using contrast colors on stitches
- Embroidered logo on chest, neck and waist
- Contrast color bias tape is used on hemline and cuff
- For air circulation mesh undercoat is used
- Fabric : % 100 Polyester
- Fabric for undercoat : % 100 Polyester
- Sizes : 36-38-40-42-44

Pink- Anthracite



Black-Ecru



Nile-Petrol



PARALEL

Light Blue-Navy Blue-White



PARALEL Women's  
Training Tracksuit Set

- Made of light ergonomic micro fabric
- Cuff and hemline is made of soft knitwear
- Reflector bias tape is used on hemline and cuff
- Fabric: % 100 Polyester
- Fabric for undercoat : % 100 Polyester
- Sizes : 36-38-40-42-44

Salmon-Anthracite-White



Lilac-Gray-White

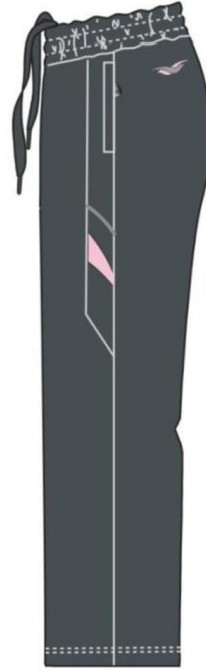


Ecu-Black-Red



POSH-F

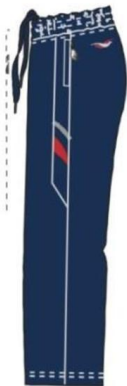
Anthracite-Pink



POSH-F Women's  
Training Tracksuit Pant

- Made of light ergonomic micro fabric
  - Stylish design by using reflector colors
  - Embroidered logo on waist
  - For air circulation mesh undercoat is used
  - Fabric : % 100 Polyester
  - Fabric for undercoat : % 100 Polyester
- Sizes : 36-38-40-42-44

Navy Blue-Red



Black-Ecru



Petrol-Nile



PARALEL

Black-Red-Ecru



Anthracite  
Salmon-White



Navy Blue  
Light Blue-White



### PARALEL Women's Training Tracksuit Pant

- ☉ Made of light ergonomic micro fabric
- ☉ Modern cut by using reflector bias tape is used
- ☉ For air circulation mesh undercoat is used
- ☉ Embroidered logo on waist
- ☉ % 100 Polyester
- ☉ Fabric for undercoat : % 100 Polyester
- ☉ Sizes : 36-38-40-42-44

