

ENTERTAINMENT | EVENTS | GUIDES | RESTAURANTS | SHOPPING

INTOKYO

InTokyo Magazine Number 01 December 2015

東京

FREE
Monthly
Guide!

Bright Lights, Big City

*Tokyo Sparkles Over
The Holidays*

WHAT TO EAT SEE & DO

*Roppongi
Shibuya &
Shinjuku*



SHIBUYA'S TOP **5**
SOUVENIR SHOPS

From the publisher of
GaijinPot

THERE ARE THOSE OF US WHO LIKE TO VENTURE
TO THE UNEXPLORED.
 TO SEE THE BEAUTY
 IN THE STRANGE AND UNKNOWN.
 THOSE OF US WHO GO OUT THERE WITH A SENSE OF
WONDER.
 BRIDGING WORLDS,
 CULTIVATING OUR CURIOSITY
 AND FINDING DELIGHT IN OUR DIFFERENCES.
 IF YOU'RE ONE OF US,
 AND YOU WANT TO EXPLORE MORE OF THIS GREAT PLANET,
 WE'RE READY TO TAKE YOU THERE.
IT'S TIME.

WIDEN YOUR
WORLD



General Manager
KIERON CASHELL
 Editor-in-Chief
JEFF W. RICHARDS

Editorial
CHRIS BETROS
ALEXANDRA HOMMA
ANTHONY JOH
KELLY WETHERILLE

Art Director
NIKLAS WENDT

Contributors
DAN GRUNEBaum
ALISA KERR
KEVIN MCGUE
JOANNA PEARCE
NAYALAN MOODLEY
JUN SATO

Sales Director
PETER LACKNER

Account Managers
KEVIN HOLDAWAY
RENA IWAMA
XIAN JIE
HIDEAKI KYO
REINA OGAWA
SEIYA HONGO

Production
SÉBASTIEN GALLET
KEVIN O'NEIL
MICHAEL VURCHIO

Operations
MASAHIRO YAGISHITA
TAKUYA NOZAWA
FIONNA RURI SHIRAI
TAKUMI SAKA

Cover Photo (6 Page 6)
 COURTESY OF T-ARTS
 COMPANY LTD.
 ©LUCASFILM LTD.

Contact
EDITORIAL
 editor@gplusmedia.com
ADVERTISING
 ads@gplusmedia.com
 Tel: +81 (0)3 5403-7781
 Fax: +81 (0)3 5403-2775

Published By
GPlusMedia
 3-1-1 Minotomi Building 3F, Shiba Koen,
 Minato-Ku, 105-0011 Tokyo
 Tel: +81 3 5403 7781
 Fax: +81 3 5403 2775
 All Rights Reserved © 2015

WHAT TO DO INTOKYO

Welcome to *InTokyo*, a new monthly guide to one of the world's greatest cities. In each issue, *InTokyo* will highlight popular areas so visitors can explore—without getting lost in translation. Also inside is a monthly calendar of the biggest concerts, exhibitions, plays, musicals and even underground film festivals taking place throughout the month. From info on neighborhood *matsuri* (festivals) and all-night art events to the best spots to view the annual *hanami* (cherry blossoms) and *hanabi* (fireworks) across the city, *InTokyo* will help you experience the city like a local.



PHOTO: MOTSU-NABE GOMAEIKU

EAT OUT IN ROPPONGI PAGE 16 & 17



CITY OF LIGHTS

Enjoy Tokyo's Holiday Illuminations

Page 04

GIFTS FROM SHIBUYA

The Area's Top 5 Souvenir Shops

Page 06

RAMEN IN SHINJUKU

Slurp Up Some Noodles In The Heart Of The City

Page 10

InTokyo is a monthly guide to the city from GPlus Media, part of the Fuji Sankei Communications Group, the publisher of *JapanToday*, *GaijinPot*, *Savvy Tokyo* & *Career Engine*. Aimed at English-speaking visitors, each month *InTokyo* introduces popular areas of the city to travelers with recommendations on where to eat, drink, shop and play. Inside each issue find the information you need to navigate one of the world's best cities.

The views and opinions expressed herein are solely those of their respective authors and do not necessarily reflect those of GPlus Media or the Fuji Sankei Group.

CITY LIGHTS

The holiday season in Tokyo is an illuminating experience

One of the highlights of the winter season is the vast array of magnificently arranged free illuminations that take place in Tokyo and beyond from mid-November until early in the New Year. These festivals of light provide a welcome chance to get out in the evenings as the temperature dips and rejuvenate the

spirits during the cold, dark winter months—not to mention take a few selfies. Whether alone, with a partner or with family and friends, these displays will fill your trip to Japan with a little more joy and warmth. Here are some *In Tokyo* favorites in Minato, Shibuya and Shinjuku.



PHOTO | JUN SATO

Roppongi Hills Artelligent Christmas

The area around Roppongi Hills is festooned with light, including the parade of trees down Keyakizaka-dori, the beautifully lit-up Mohri Garden and the giant Christmas tree at Roku-Roku Plaza, the doorway of the complex.

Where: Roppongi station **When:** Until Dec. 25, 2015



PHOTO | KYODO PR

ODAIBA YAKEI ILLUMINATION

With Rainbow bridge, the giant Daiba Wheel and endless harbor lights, Odaiba is in itself a unique year-round breathtaking illumination spot, but don't miss the Yakei Illumination at Decks, one of Odaiba's largest commercial facilities. Must-see spots include: the 20-meter high Daiba Memorial Tree, the heart-shaped statue (that allows you to take a rare triple-shot of Tokyo's city lights, Rainbow bridge and the Daiba Memorial Tree at once) and the Illusion Dome.

Where: Odaiba Kaihin-Koen station
When: Year-round

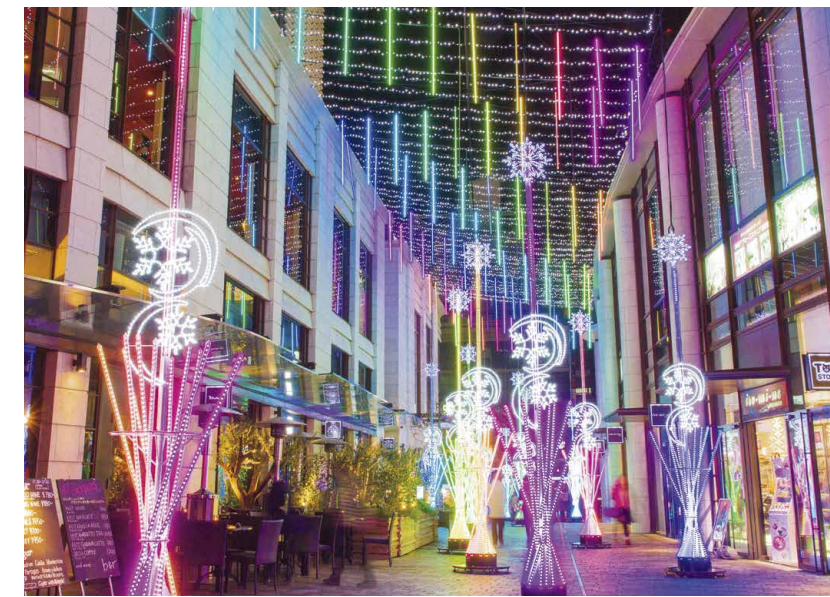


PHOTO | JEFF W. RICHARDS

Akasaka White Sacas

Every year Akasaka Sacas, the small "city-within-a-city" and home to Tokyo Broadcasting System (TBS), lights up the area outside the shopping center and even installs an outdoor skating rink. Visit for an active, sparkling and bubbly night along with friends.

Where: Akasaka station
When: Until Feb. 14, 2016



PHOTO | JUN SATO

Shinjuku Terrace City

Business town at daytime, as soon as dawn hits Shinjuku the area changes into a stage of multiple illumination displays that will take your breath away. Make sure to start at Mosaic Street, illuminated in "pop candy" colors inline with this year's Macaron Globe theme. Save the best for last with a visit to the Southern Terrace south of JR Shinjuku station.

Where: Shinjuku station
When: Until Feb. 14, 2016



PHOTO | SUNNY SIDE UP

Omohara Illumination 2015

The flagship Tokyu Plaza Omotesando-Harajuku ("Omohara") complex, with its wall-of-mirrors entrance and green, rooftop park, will once again add to the area's brightness with a nostalgic illumination that pays tribute to the light displays of yesteryear with its simple theme and no nonsense design.

Where: Meijijingumae station
When: Until Feb. 29, 2016

YEBISU GARDEN PLACE BACCARAT ETERNAL LIGHTS

The light-up event at the historic Yebisu Garden Place is called Baccarat Eternal Lights and features a spectacular 8-meter tall chandelier and beautifully decorated trees among its numerous illuminations.

Where: Ebisu station
When: Until Jan. 11, 2016



PHOTO | JUN SATO



PHOTO | JUN SATO

Caretta Shiodome CANYON D'AZUR

Called Canyon d'Azur, the popular illumination at Caretta Shiodome features an ocean of 270,000 blue and white LED lights. A must-see spot this year is the special *Cinderella*-inspired illuminations that will take you to a world of everlasting fairy tales. Perfect for a romantic date or a family visit with the kids.

Where: Shimbashi station
When: Until Feb. 14, 2016

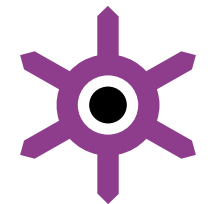


PHOTO | TOKYO TOWER

TOKYO TOWER WINTER FANTASY ORANGE

Embrace the warmth of the season at the city's iconic symbol, Tokyo Tower, and its ground-based illuminations. Under the theme of "Warmth," this year's illuminations feature a giant Christmas tree and a mini tower, all illuminated in orange—the tower's official color. Christmas music, surrounding the entire Orange Garden will surely add to the festive mood and contribute to a lovely night out at the very heart of the city.

Where: Akabanebashi station
When: Until Feb. 29, 2016

SHIBUYA'S TOP 5 SOUVENIR SHOPS

By **Alexandra Homma**

Shopping in Tokyo can be the ultimate experience, but when it comes to buying gifts, deciding what to pick up can be a little daunting—especially if time is limited. This season, in the spirit of holiday giving, *InTokyo* has put together a list of unique shops in the heart of the city where you can find a treasure trove of mementoes—from the traditional to the not so (sushi socks, anyone?). Whether you're after anime and manga items, books on Japan or some lovely keepsakes as a memory of your trip, each of these stores offers something distinctive to remind you of your visit.



PHOTO: JEFF W. RICHARDS

01 Tokyo's Tokyo

Step into a world of manga & pop culture

If you're looking for a store that offers more than just conventional souvenirs, head to the iconic Tokyu Plaza Omotesando Harajuku for inspiration. Besides being an architectural destination unto itself, it also houses **Tokyo's Tokyo**, a store featuring a wide variety of pop culture and manga-inspired novelty goods. These witty and whimsical goods not only make original presents for those back home, but also interesting conversation pieces guaranteed to have you reminiscing about your trip. From sushi socks and hand towels to *kabuki* (traditional Japanese theater) mask face packs and "manga plates"—even pen cases designed to open like grilled fish in an *izakaya*—the wide variety of slightly wacky items in this "Cool Japan" shop should stock something for everybody on your list.

Station: Meijijingumae (exit 5) or JR Harajuku
Address: 4-30-3 Jingumae, Shibuya (Tokyu Plaza 5F)
Open: Mon-Sun, 11am-9pm
Tel: 03-6438-9201
Web: omohara.tokyu-plaza.com/en

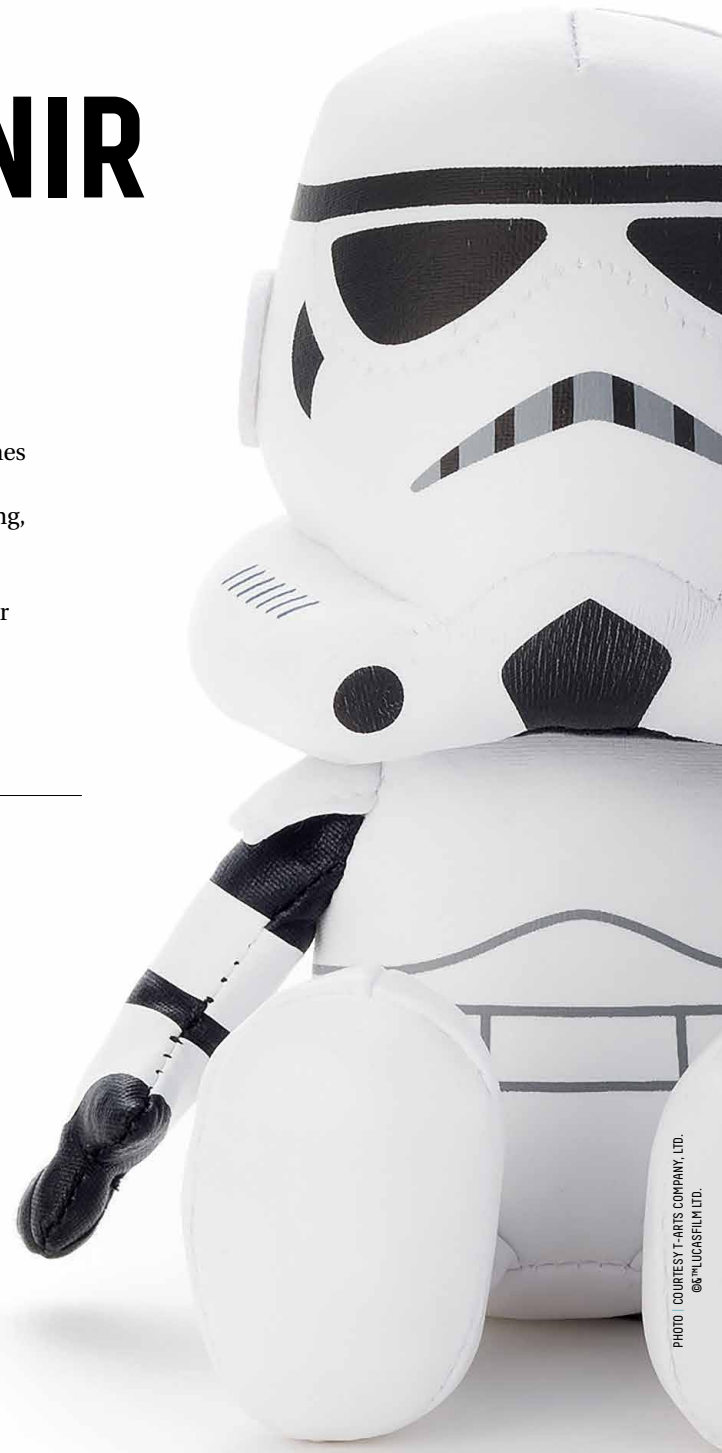


PHOTO: COURTESY T-ARTS COMPANY, LTD.
© 2017 LUCASFILM LTD.



STAR WARS STORMTROOPER BEANS COLLECTION | ¥1,800 | KIDDY LAND

03 Wa-Zakka Maruara Watanabe

Fun shop with a history

For standard souvenirs like keychains, magnets, Japanese-style fans or chopsticks to kimono, *yukata* and other Japanese clothing, you'll find it all at **Wa-zakka Maruara Watanabe**. Equipped with over 1,000 items, it's a jungle of uniquely Japanese trinkets in all shapes and sizes. With nearly two decades of history in its present form, the store dates back to 1925, when the grandfather of the current shop owner opened a clothing store in downtown Shibuya.

Station: Shibuya
Address: 16-8 Udagawacho, Shibuya
Open Hours: Mon-Fri, 11am-7pm; Sat-Sun & hols, 1-7pm; closed Wed
Web: maruara.com



PHOTO: JEFF W. RICHARDS



PHOTOS: ALEXANDRA HOMMA

02 Oriental Bazaar

Gateway to classic Japanese gifts

If you're an organized shopper looking for a store with everything from Japan, carefully arranged by order and category, then **Oriental Bazaar** is the definitive destination. With an exterior modelled after a shrine, its three floors showcase antiques and reasonably priced souvenirs. The basement comprises kimono, fans, T-shirts, other Japanese clothes and Hayama pearls, while the main floor stocks china, lacquer tableware, chopsticks and miscellaneous goods. The third floor is where you can find Japanese antiques, furniture and traditional screens. If items you purchase are too heavy to carry, talk to the very friendly staff (fluent in English) and have it arranged to be shipped directly to your home—anywhere in the world. Euro and US dollars are also accepted, in addition to credit cards.

Station: Meijijingumae (exit 4) or JR Harajuku
Address: 5-9-13, Jingumae, Shibuya
Open: Mon-Wed & Fri-Sun, 10am-7pm; closed Thu
Web: orientalbazaar.co.jp



SHIGEMI KIMMIDOLL
¥2,200 | KIDDY LAND



PHOTO | COURTESY KIDDY LAND

04 Kiddy Land Harajuku

One-stop shop for all things kawaii

For something *kawaii* (cute) to surprise your kids, character-obsessed friends or to add more *Hello Kitty*-ness to your life, look no further than **Kiddy Land Harajuku**. With a vast selection of famous Japanese characters for children, adults and even celebs (guess where Angelina Jolie shops every time she's in town?), it's a veritable theme park of character goods. The five-story building has everything you can ask for from Snoopy, Rilakkuma, Disney, *Star Wars* and, of course, a half-floor dedicated to miss Kitty herself.

Station: Meijijingumae (exit 4) or JR Harajuku
Address: 6-1-9 Jingumae, Shibuya
Open: Mon-Fri, 11am-9pm; Sat-Sun & hols, 10:30am-9pm
Web: kiddyland.co.jp

05 Line Friends Store

The friendliest store in town

Step into the world of Brown, Cony, Moon, Sally and friends at this one-and-only **Line** official character store in Tokyo. With over 400 items varying from plush toys, T-shirts and stationery to even cookies, the operator of Japan's largest free call and messaging app Line offers you a two-story shop worth visiting even if just for a selfie with your favorite brown bear waiting at the entrance to the basement level.

Station: Meijijingumae or JR Harajuku
Address: 4-32-13 Jingumae, Shibuya
Open: Mon-Fri, 11am-9pm;
Sat-Sun & hols 10am-9pm
Web: fs.line.me



PHOTO | COURTESY LINE

ONE ZERO NINE

Feeling fine at Shibuya 109

By Joanna Pearce, Savvy Tokyo

Home to 10 floors of fashion and beauty products, the iconic **Shibuya 109** department store, or Ichi-Marukyu, lies at the heart of Shibuya's fashion culture. Situated alongside the famous scramble crossing, it's a shopping mecca for Tokyo's young women. As you step away from the natural light and into the kitschy neon maze of this tube-shaped building, you will lose all track of time—especially if you get caught up exploring its vast array of incredible surprises.

It can be overwhelming for first-time visitors. With pumping music, store attendants shouting "*Irrashimase*" ("Welcome") and a labyrinthian series of escalators to navigate in the crowd, it's easy to feel lost. Here's our guide to getting the most out of your Shibuya 109 shopping experience.



ANKLE BOOTS | ¥10,584 | ESPERANZA XYZ | B1 FLOOR



2015 AUTUMN COLLECTION DRESSES ON DISPLAY AT DURAS, 5TH FLOOR. PHOTO | JEFF W. RICHARDS

SHOES

If you're in the market for an unusual pair of shoes or boots, head down to the first basement level for a good variety of funky footwear. At **Esperanza XYZ**, all the shoes are made in Japan. The store displays the footwear by size so you can enjoy browsing without fear of disappointment when you discover your size isn't in stock. The shop carries a good selection of larger sized shoes (a ladies' Japanese size 24.5 cm is approximately a U.K. 6, U.S. 7 or European 39).

COLLAR SOCKS
¥432
DOLL KISS
3RD FLOOR



ACCESSORIES

Shibuya 109 is a haven for unusual accessories. **Sarah Zodiaque**, on the second floor, has a unique collection of hair clips, Alice bands and earrings. For colorful socks and tights head to **Doll Kiss** on the third floor. If you're a girl that loves diamantes and bling, don't miss **Ruby Rose** on the sixth floor, where you can buy bejewelled phone cases and character accessories.

CLOTHES

Most of the clothes in Shibuya 109 are only available in one size, small—that is, if you don't have a body type similar to that of a young Japanese woman. If you do have a petite figure, then floors four, five and six have a fabulous range of unusual clothes. The store attendants usually wear the clothes that are on sale and they are happy to help. Fitting rooms tend to be small or just a curtain at the back of the store, so be sure to ask if you want to try anything on.



CANMAKE CANDY WRAP LIP GLOSS | ¥580

BEAUTY PRODUCTS

Voeux in the basement is worth a visit to marvel at the array of every conceivable color of contact lenses. However, a shopping trip to Shibuya 109 would not be complete without also spending some time browsing around the top floor. This is a prime spot to find many unusual Japanese beauty products and accessories.

DENIM JEANS COLLECTION
¥15,109
RESEXXY,
7TH FLOOR
PHOTO | COURTESY
RESEXXY



FOOD & DRINK

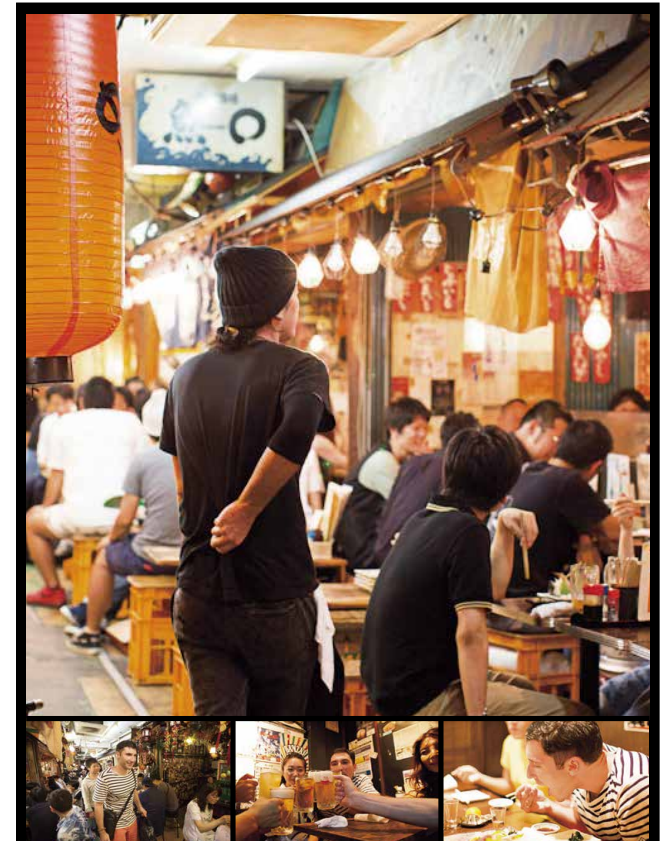
For a unique souvenir from your visit to 109, visit **Café ma Maison** on the seventh floor and pick up a tub of lollipops encased in a Shibuya 109 tube. Flavors include strawberry, orange, mint, dark chocolate and white chocolate. If you need a little pick-me-up, then head to **SBY** on the eighth floor, which has a juice bar, a crepe stand and bubble tea.



& FINALLY...

109 Men's—a nine-floor commercial center only for the guys — is also open just a few steps closer to the station. Bring your partner along and make a day of it, the 109 experience is all about having fun and embracing the Shibuya fashion lifestyle.

For more beauty & shopping visit savvytokyo.com



Experience Tokyo's Vibrant Culture In A Local's Shoes!

Discover Some Of The City's Most Unique Hidden Gems, With Fabulous Food & Drink And Make New Friends Along The Way!

- Walking Food Tours With Local Guides
- Small Groups (Private Tours Available On Request)
- Sample Various Traditional Food & Drink

oishiitokyo.com



Text Jeff W. Richards Photo Nayalan Moodley

USE YOUR NOODLE

No Tokyo adventure is complete without a bowl of ramen to fuel it

Foodies come to Tokyo for many reasons: the sushi, the tempura, the *wagyu* beef, the Michelin-starred restaurants and the... noodles? Indubitably. Ramen is Japanese soul food and continually evolving in new and delicious ways. Apart from the dried instant noodles of your youth, a late night bowl noodles on the way home or a stomach-filling lunch is about as working class Japanese as you can get—a part of the fabric of daily city life.

If you see a small shop with a *noren* (entrance curtain) and a busy lineup outside, chances are it's a ramen shop. In *Blade Runner*-esque Shinjuku, you're bound to run into more than a few noodle bars. With its maze of back streets and old-school vibe, you should make it a point of pushing back the curtain and ducking inside one of these small, counter-seating restaurants. To find them, all you need to memorize are these katakana characters: ラーメン (ramen).

TICKET TO RIDE

Unlike regular eateries, most ramen shops have you buy a ticket from a vending machine at the front, which you then give to the

5 Shinjuku Area Bowls

FUUNJI 風雲児

Smoky, creamy chicken soup for the soul.

Address: 2-14-3 Yoyogi, Shibuya Shinjuku station, south exit
Open: 11am-3pm & 5pm-9pm (or until the soup runs out), closed Sun & hols.
Web: fu-unji.com

MENYA MUSASHI 麵屋武蔵

Top-rated (*Frommer's* called it the No.1 rated bowl in Tokyo a few years back) shoyu-style ramen.

Address: 1F, 7-2-6 Nishishinjuku, Shinjuku. Shinjuku station, west exit
Open: 11am-10:30pm everyday
Web: menya634.co.jp

NAGI GOLDEN GAI 風ゴールデン街

Famed for its over 20 different types of *niboshi* (dried sardine) used in its completely unique, thick, salty shoyu broth.

Address: 2F, 1-1-10 Kabukicho, Shinjuku Shinjuku sanjome station
Open: 24 hours
Web: n-nagi.com

WATANABE 渡辺

Upscale gem popular with couples serves rich pork bone and fish-based soup topped with *chashu*.

Address: 2-1-4 Takadanobaba, Shinjuku-ku. Takadanobaba station
Open: 11am-8pm everyday
Web: watanabestyle.com

GACHI

Fried chicken ramen in the heart of Ni-chome.

Address: 1F, 2-17-10 Shinjuku, Shinjuku sanjome station
Open: 11am-11pm, closed Mon
Web: menya-shono.com/gachi

person behind the counter when you sit down. Typically, a bowl will cost anywhere from ¥700 to ¥1,000 and you can add toppings for between ¥100 and ¥200. These choices usually consist of extra *chashyu* (roasted pork slice), *negi* (green onion), soft boiled egg. While the vending machines are in Japanese, many shops now offer simple English menus and if not, there is usually a helpful member of the staff who can help you choose something with some rudimentary English—don't let language be barrier to trying a true Tokyo experience.

TYPES OF RAMEN

MISO 味噌

The city of Sapporo in the north of Japan, is known as the home of miso ramen, but its flavor-packed fermented bean paste base means that shops all across the country have adapted their own variations on a classic. This is nothing like your breakfast miso soup—unless its 5 a.m. and you're just returning home from a night on the town.

SHIO 塩

Shio means “salt” in Japanese. *Shio* ramen is a much lighter style than *shoyu*, which lends itself to shops matching the soup stock with chicken, seafood and citrus flavors.

SHOYU 醤油

The Japanese ramen mainstay. *Shoyu* is soy sauce-based broth with plenty of flavor and *umami* goodness. This is the type of ramen that locals crave when away from their favorite haunt. It's the basic bowl that all bowls will be compared to.

TONKOTSU 豚骨

Even though most ramen broths are pork bone-based, *tonkotsu* means really thick and creamy. Pork belly and bones with miso, sake, vegetables and other trade secrets are simmered for many hours to bring out all the robust flavor. Your nose will guide you if you are in the area of a true tonkotsu ramen shop.

THE ACCESS NARITA

DIRECT FROM TOKYO STATION TO NARITA AIRPORT FOR ONLY

1,000 YEN



Cheaper & Easier Than Taking The Train
Spacious Seats
On-bus Restroom
No Reservations Needed
Kids Half-price (Only 500 Yen)

accessnarita.jp

 BE-TRANSSE GROUP

EAT
PLAY
LOVE

A quick guide to "must do" Shinjuku

By Alexandra Homma

Welcome to Shinjuku, home of the world's busiest train station and Tokyo's largest commercial complexes, skyscrapers, hotels and entertainment spots. A true "city of lights," the district offers something for everyone when it comes to exploring.

Eat

With countless restaurants, bars and plenty of world-class cuisine, you won't run out of options for eating in Shinjuku. But if you are into unconventional places where you can experience true local tastes, check out **Shinjuku Golden Gai** and **Shinjuku**

Omoide Yokochō. Located just a short walking distance from Shinjuku station, these historical alleys are packed with hundreds of tiny restaurants and bars, each with a different feel and flavor. The Golden Gai area is said to host over 250 bars, though no one really knows the actual number. Ditto for Omoide Yokochō, (literally "Memory Lane"), which contains a variety of nibbles for all appetites: *yakitori* (grilled chicken skewers), *izakaya* (Japanese-style bars), *soba* and ramen noodles, *yakiniku* (grilled meat) and sushi. You won't find anything luxurious here, but you will learn much from the conversations with the bartenders and customers sitting right next to you.

Another place to try really good food is the basement floor of the shopping complex **Isetan**, a five-minute walk from Shinjuku's east exit. One of the best known *depachika* in Japan, this basement-level food emporium offers a true gourmet

tour of fine-quality foods and beverages from around the world. Filled with an array of Japanese dishes, sweets, tofu, fresh fish and even wine tastings, this floor is simply row upon row of the most exquisite food you could ever hope to sample all in one place.



GOLDEN GAI

Play

If you're in town for nightlife and fun, you need look no further than **Kabukicho**, on the eastern side of Shinjuku station. Kabukicho is another large area with hundreds of restaurants, bars, nightclubs, live houses, hostess bars and some risqué establishments that we will leave to your imagination. Though most commonly known as Tokyo's largest red light-district, it's also home to various other types of entertainment—including museums, theme restaurants and sightseeing spots. Where to start? Try the **Robot Restaurant**, a must-see live show featuring remote control robots and costumed dancing girls.

Kabukicho also boasts the famous life-sized **Godzilla head**, roaring at you from the top of Shinjuku Toho Building, a large cinema and entertainment complex on the eastern side of Shinjuku station. Entertaining for everyone really, this is a definitive stop for anyone into the king of monsters.

Also highly recommended is the **Samurai Museum**, which focuses on the exhibition of samurai and their role in Japanese history from the Kamakura to Edo periods. A unique museum for visitors to gain a bit of insight into the fighting spirit of the Japanese, see a great collection of traditional swords and even take photos in old samurai armor yourself.

Shidax, one of the largest karaoke chains in Japan, has a massive shop in Kabukicho if you're in the mood for belting out some tunes. It features a full list of all-you-can drink packages and some really classy karaoke rooms.



SHINJUKU GYOEN



ROBOT RESTAURANT



OMOIDE YOKOCHO

Love

After over-indulging in the neon lights and too much fun, it may be time to rest and enjoy the other side of Shinjuku—the laid-back, peaceful spots that you just may fall in love with. Start with a visit to the **Shinjuku Gyoen National Garden**, a vast park spanning 58.3 hectares that features three major gardens in the Japanese, English and French styles. Perhaps Tokyo's most coveted green space, Shinjuku Gyoen is the perfect place to find some tranquility in the center of the hectic city.

The **Hanazono Shrine**, one of the most historical shrines in Japan, has served as the guardian of the area since the Edo period. A beautiful place for a bit of rejuvenation, this Shinto shrine, located on the west

side of Shinjuku station, also hosts some of Shinjuku's largest festivals and is a popular temple for locals to pray for success in business.

A brief stop at the **Tokyo Metropolitan Government Building**, popular for its free observation decks providing awesome panoramic views of the city and beyond should also be on the list. What many don't know is that the building also opens its two, 32nd floor cafeterias to visitors, as well. Head up and get a quick bite from the healthy, simple menu (for no more than ¥700) along with your view.

Finally, for a perfect way to end your day, visit **Mohumohu**, Shinjuku's very first and newly opened owl cafe. Here, you will be greeted by a total of seven owls who will keep you company as you sip your tea or coffee. For just an extra ¥200, patrons can feed nocturnal birds of prey.

GOLDEN GAI

Station: Shinjuku (east exit)
Address: 1 Kabukicho, Shinjuku
Web: goldengai.jp

OMOIDE YOKOCHO

Station: Shinjuku (east exit)
Address: 1 Nishi Shinjuku
Web: shinjuku-omoide.com

ISETAN

Station: Shinjuku (east exit)
Address: 3-14-1, Shinjuku
Web: isetan.co.jp

KABUKICHO

Station: Shinjuku (east exit)

ROBOT RESTAURANT

Station: Shinjuku (east exit)
Address: 1-7-1 Kabukicho, Shinjuku
Open: 6-11pm
Web: shinjuku-robot.com

GODZILLA HEAD

Station: Shinjuku (east exit)
Address: Hotel Gracery, 1-19-1 Kabukicho, Shinjuku

SAMURAI MUSEUM

Station: Shinjuku (east exit)
Address: 2-25-6 Kabukicho, Shinjuku
Open: Noon-10pm
Admission: ¥1,500
Web: samuraimuseum.jp/en

SHINJUKU GYOEN
NATIONAL GARDEN

Station: Shinjuku (south exit)
Address: 11 Naitocho, Shinjuku
Open: 9am-4pm, closed Mon (except National hols)
Admission: ¥200
Web: enu.go.jp/garden/shinjukugyoen/english/

HANAZONO
SHINTO SHRINE

Station: Shinjuku (east exit)
Address: 5-17-3 Shinjuku

TOKYO
METROPOLITAN
GOVERNMENT
BUILDING

Station: Shinjuku (west exit)
Address: 2-8-1 Nishishinjuku, Shinjuku

OWL CAFE
MOHUMOHU

Station: Shinjuku (east exit)
Address: 3-35-2 Shinjuku
Open: Mon-Fri, noon-9pm; Sat, Sun & hols, 11am-8pm
Admission: ¥1,500-1,800
Web: mohumohu99.jp



SIMPLY PERFECT.



HAND-SELECTED 100% WEBER BLUE AGAVE.
THE WORLD'S FINEST ULTRA-PREMIUM TEQUILA.

patronspirits.com

お酒は 20 歳を過ぎてから。飲酒運転は法律により禁止されています。
妊娠中や授乳期の飲酒は、胎児・乳児の発育に悪影響を与えるおそれがあります。

PHOTO | COURTESY ISSHIN DO HONPO



FRIEND FACE PACK MASK | ¥430



Theatrical Regimen

Add life to your regular skincare with this **Isshin Do Honpo** lineup of unique *kabuki*- and monster-inspired face masks. One of the coolest recent trends in town, these are both unique Japanese souvenirs and highly efficient beauty products that will reinvigorate your skin and give chills to your family. With a variety to choose from—including vampires, Frankenstein skeletons and the band KISS—these masks are designed to make skincare fun. Prices range from ¥430 (monster masks) to ¥900 (kabuki). Find them in Tokyu Hands, Isshin Do Honpo online and other department stores.



Japanese Spa Experience

Japan has a wide variety of bath salts to warm the body, help you lose weight or relax the mind. These beautifully designed and lovely smelling **Fancy Bathroom bath salts** (¥150) feel and smell indulgent and come in tea bag-style packs. Sold in Tokyu Hands, Loft and other stores.

Skin Deep

For centuries Japanese women and men alike have used *tsubaki*, or Japanese camellia oil, to naturally care for their skin and hair. **Tsubaki Camellia Oil** (¥1,580) has outstanding moisturising properties as it contains high amounts of oleic acid, which helps it penetrate deep into hair and skin. It has a light texture and is quickly absorbed, leaving skin, hair and nails hydrated, supple but most importantly—not greasy. A true bargain beauty product easily found in Japanese drugstores. Just look for the famous yellow and red packaging.



Clean Clear Complexion

Kanebo's **Suisai Beauty Clear Powder** is a star beauty product with a serious cult following. A package of 32 pods costs ¥2,000 and each pod contains a combination of gentle enzymes to exfoliate dead skin cells, hyaluronic acid to hydrate and ingredients like tofu extract and royal jelly to brighten the skin. Use two to three times per week. Sold in most drugstores.

東京

SHOPPING

Beauty

JAPAN'S TOP BEAUTY PRODUCTS



Japanese women have long been admired for their beautiful and youthful skin, so it's no surprise that Japan is home to some of the best skincare and beauty products in the world. But where do you start? Here is InTokyo's go-to list of world-renowned Japanese products that every woman should add to her beauty routine.

By Alisa Kerr, Savvy Tokyo



Quick Face Soak

This super hydrating mask is a true cult beauty product and a favorite among "it" girls, models and their makeup artists around the world. Professional makeup artists regularly use the Shiseido

SK-II Facial Treatment Mask (¥1,700) backstage and at photo shoots to prep skin before makeup. SK-II's star ingredient, Pitera, works quickly on dehydrated skin, leaving it soft and hydrated, with a noticeable glow. The convenient and easy-to-use cotton mask is soaked in product, which makes application fast and foolproof. Perfect to use before a special occasion, after a long flight, or simply while relaxing in the bath. Sold in most drugstores.



Hair Re-Do

There many products in Japanese drugstores that just don't exist elsewhere. One of them is a "hair reset" spray, like Shiseido's **Ma Cherie Perfect Shower Spray** range (¥740). A product to use in the morning to remedy messy, unruly bed hair; it brings locks back to a sleek, post-wash condition. The result? Smooth, shiny and lightly fragranced hair. Best of all, it doesn't leave hair heavy and greasy, it feels light and clean even later in the day.

Roppongi

東京


乃木坂 鳥幸
NOGIZAKA TORIKO
YAKITORI

Enjoy sitting at a counter made of unfinished wood, where you can taste quality *yakitori* (grilled chicken skewers) handmade by skilled chefs. Each skewer is carefully cooked and seasoned with traditional spices like wasabi, *shio-koshu*, *yuzu-koshu* and *tare* (sauce).

Open: Lunch 11am-2pm, dinner 5-11:30pm, closed Sun
Address: 1F, 9-6-30 Akasaka, Minato-ku
Tel: 050-2018-0449


御曹司 松六家
ONZOSHI MATSUOKUYA
MIZUTAKI

Onzoshi Matsurokuya is a high-quality Japanese cuisine restaurant with a traditional atmosphere. The specialty is *mizutaki* (chicken and vegetables stewed in a hot pot and served with dipping sauce).

Open: Mon-Sat 11am-11pm, closed Sun
Address: 1F, 4-10-2 Roppongi, Minato-ku
Tel: 03-3796-3369


ぬる爛 佐藤
NURUKAN SATO
SNOW CRAB & AVOCADO TARTARE

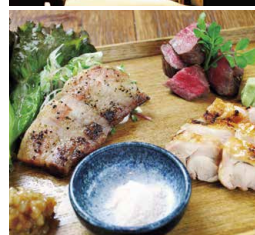
Japanese cuisine prepared with seasonal ingredients and more than 120 kinds of *nihonshu* (Japanese sake) on offer in a traditional atmosphere. Be greeted at the entrance by a variety of different sake bottles lining the wall that can be enjoyed warm, hot, cold and room temperature.

Open: Mon-Sat 11:30am-11:30pm, closed Sun
Address: 1F, 7-17-12 Roppongi, Minato-ku
Tel: 03-3405-4050


料理屋 三船
RYORIYA MIFUNE
GRILLED BEEF & PORK

The interior of this stylish izakaya is like the set of a samurai movie and is inspired by the famous Japanese actor, Toshiro Mifune. Dishes based on seasonal ingredients cooked in a variety of traditional ways with a rich variation of highly regarded sake and *shochu* from all over Japan.

Open: Mon-Sat 11:30am-11:30pm, closed Sun
Address: 1F, 7-18-7 Roppongi Minato-ku
Tel: 03-6804-5548



In The Middle Of The Hills

Roppongi is more than just nightlife

By Chris Betros



TOP OF ROPPONGI HILLS MORI TOWER



ROPPONGI HILLS SKYVIEW



TOKYO MIDTOWN PARK SCULPTURE



TOKYO MIDTOWN FROM THE AIR

Roppongi Hills

Roppongi, in the heart of Minato-ku, is an area best known to the foreign residents of Tokyo for its night life, though it often gets overlooked for the many cultural, gourmet and sightseeing activities during the day, as well. The famous Roppongi Hills complex has the five-star Grand Hyatt Tokyo, Toho cinemas, Mohri Garden, the Mori Art Museum, TV Asahi, Roppongi Hills Arena, Tokyo City View, shops, restaurants, cafés and bars all in one futuristic city-within-a-city. The 250-meter-high Tokyo City View observation deck is definitely worth a visit. Open from 10 a.m. to 11 p.m. (until 1 a.m. on Fridays and Saturdays), its glass walls extend all the way around the floor, providing a panoramic, 360 degree view of Tokyo and even Mt Fuji on clear days. When the weather is good, the rooftop deck—20 meters further up—is open from 11 a.m. to 9 p.m. Admission to Tokyo City View is ¥1,800, plus an additional ¥500 for the rooftop deck.

The Mori Art Museum is located on the 53rd floor of Mori Tower. Open from 10 a.m. to 10 p.m. (until 5 p.m. on Tuesdays), it holds exhibitions on modern art, design, photography, architecture and other genres. Admission is ¥1,800 for adults, ¥1,500 for seniors, ¥1,200 for students and ¥600 for children aged 4 to junior high school.

There is plenty of greenery at Roppongi Hills. Mohri Garden, with its pond and cherry trees, evokes the image of a *daimyo's* (lord) estate from the Edo era. Keyakizaka, the main street of Roppongi Hills, is lined with flowers and is currently lit up for Christmas.

Tokyo Midtown

On the other side of Roppongi is Tokyo Midtown, which comprises the five-star Ritz-Carlton hotel, Suntory Museum of Art, Tokyo Midtown Design Hub, 21_21 Design Sight, Fujifilm Square and another vast array of shops and restaurants. Free Wi-Fi service is available at Galleria (where there are 50 tax-free shops), Plaza, Midtown Tower (B1, 1F, 21F, 33F, Sky Lobby).

The Suntory Museum of Art holds exhibitions of Japanese paintings, ceramics, lacquerware, glassware, dyeing and weaving, and offers an English audio guide for visitors. It's open 10 a.m. to 6 p.m. (until 8 p.m. on Fridays and Saturdays).

The Green Square at Tokyo Midtown is currently a sea of brilliant light for the Christmas season. If you plan on viewing the illuminations, get there early as some nights, the crowds can be overwhelming. More greenery can be found adjacent to Tokyo Midtown at Hinokicho park, which was built on the former site of a feudal lord's villa. It's a popular spot for families, especially on weekends.

roppongihills.com
mori.art.museum
tokyo-midtown.com
suntory.com/sma

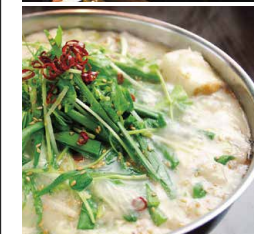
東京

Roppongi


もつ鍋 ごま福
MOTSU-NABE GOMAFUKU
MOTSU-NABE (WHITE)

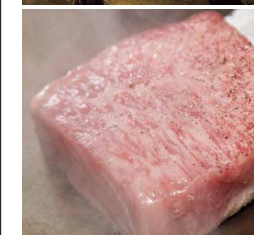
Located just one-minute walk from Roppongi station, this restaurant offers five unique types of *motsu-nabe* (beef offal cooked in a hot pot). At the end of the meal, turn your soup into ramen with noodles from a famous noodle-making shop.

Open: Mon-Sat 6pm-5am, closed Sun
Address: B1F, 7-14-7 Roppongi, Minato-ku
Tel: 03-6434-9048


御曹司 きよやす邸
ONZOSHI KIYOYASUTEI
WAGYU STEAK

Onzoshi Kiyoyasutei serves high-quality Japanese *teppanyaki* (food prepared on a hot iron plate in the center of the table). The cuisine consists mainly of *wagyu* (Japanese beef) and fresh seafood. As you dine, enjoy the tranquil Japanese-style pond inside of the restaurant.

Open: Mon-Sat 11:30am-11:30pm, closed Sun
Address: B1F, 4-8-6 Roppongi, Minato-ku
Tel: 03-3408-4889



Teach English One-to-One



- ✓ Choose your own schedule
- ✓ Professional environment
- ✓ Ongoing support
- ✓ 2 locations in central Nagoya



GABA One-to-One English
 teaching-in-japan.gaba.co.jp

Apply now!

03-5338-5715 (Mon - Fri 10am to 7pm)



Movie Scene

TOUR DE FORCE

Star Wars: The Force Awakens

By Kevin Mcgue

Thirty years after the events of the first film, the old guard (Harrison Ford, Carrie Fisher, Mark Hamill and Peter Mayhew) hand the lightsaber to the next generation of the resistance (newcomers Daisy Ridley and John Boyega). The rest of the massive cast is led by Oscar Isaac, Simon Pegg and Max von Sydow. Director J.J. Abrams has taken on the formidable challenge of pleasing fans of the original trilogy, while also attracting new ones. If the various official trailers and clips and scant leaked story details are anything to judge by, the Force is strong with Abrams. The official release date is December 18, but there won't be any theaters showing it a minute after midnight, as no screenings are allowed before 6:30 p.m. Tickets have been on presale for a while and the first few days of screenings at some theaters are already sold out, so get yours while you can. As with previous films in the franchise, the release is being heralded by countless promotional tie-ins, toys and products, nicely timed to coincide with holiday gift shopping. Kiddy Land in Harajuku has expanded its Star Wars Galaxy floor in order to meet demand. Tickets available at starwars.disney.co.jp/movie/force.html

Where: Toho Cinemas Roppongi Hills & others, 6-10-2 Roppongi, Minato-Ku
When: From Dec. 18
Web: tohotheater.jp



PHOTO | STAR WARS: THE FORCE AWAKENS © 2015 LUCASFILM

What The Dickens!

British Pub and Live Music

DICKENS!
LIVE
SCHEDULE
DECEMBER
2015

- Tue 1st Dickens! **CLOSED**
Wed 2nd Jam Session With KINLAY
Thu 3rd Craig Chivers Ballads & others
Fri 4th NERD ROCK
Sat 5th TK & The BluesBlasters
Sun 6th Open Mic Poetry 5:30 till 8pm
then The West Village band
- Mon 7th Dickens! **CLOSED**
Tue 8th Dixieland Jazz
Wed 9th Kenji and Manami
Thu 10th Water Shed
Fri 11th Mackie The Band, Santas In Town Dance Party
Sat 12th TELL Aware Benefit with
Jimmy Binks & The Shakehorns
- Sun 13th Disco INFERNO Reunion Concert
Mon 14th Dickens! **CLOSED**
Tue 15th TBA
Wed 16th Tokyo ROCK-STAR Jam Session
Thu 17th Chris Grundy
Fri 18th AC-Cheez E
Sat 19th Kev Gray & The Gravy Train
Sun 20th U2 Cover band 41 Live 3-7pm then
Anna & Mieko feat Huw Lloyd
- Mon 21st TILL DEATH Movie Showing from 7pm
Tue 22nd The Simon Collective
Wed 23rd Anna and Mieko Featuring Huw Lloyd
Christmas Jazz Classics
- Thu 24th Tom Holliday
Fri 25th Christmas Day, 3 course Roast Turkey Christmas
Dinner from 1 to 6pm Y2500
Please Call 3780-2099 for Reservations
- Sat 26th Wouassi Roots Band
Sun 27th Live Event 3-7pm then Satomi Shiga Duo from 8:30pm
Mon 28th Dickens! **CLOSED**
Tue 29th Derek Short & The Executive Class Jazz Band
Wed 30th The Delta Blues Project
Thu 31st New Years Eve Party with Dirty T's

What The The Dickens!

Adress: 1-13-3 Ebisu Nishi, Shibuya,
Tokyo 150-0021
Phone: 03-3780-2099
www.whatthedickens.jp

December

Mathew Jonson



Mike Shannon

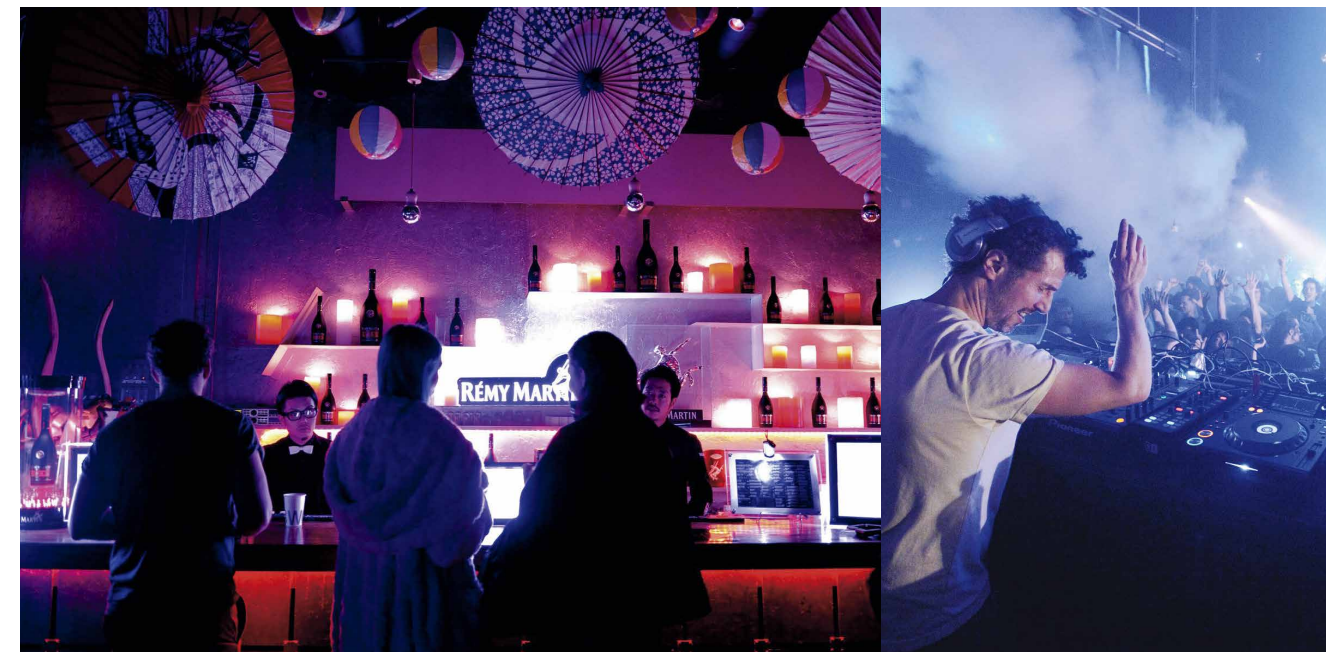


PHOTO | COURTESY WOMB

WOMB

SUPERCLUB GETS DOWN

A New Years Eve party favorite

By Dan Grunebaum

While revelers at other clubs may be waving their hands in the air and popping the bubbly, dance music aficionados at Womb will be getting down to the serious sounds of Mathew Jonson and Mike Shannon—and that's why our pick of the annual New Year's Eve parties goes to the venerable Shibuya dance cavern's **New Year Countdown to 2016**.

The son of a sound engineer and a classically trained pianist, Jonson brings a musical depth and richness to his dance floor tapestries—woven live on the fly—that keep people begging for more—and more and more... He's graced the decks of the much-mourned dance temple Yellow—both solo and with his Cobblestone Jazz collective—and rocked ravers' worlds at the highly touted, Niigata-based Labyrinth festival.

Currently based in techno ground zero, Berlin, Jonson helms his Wagon Repair label and issues slabs of seriously twisty techno from his synth-cave. Apparently, the Canadian is also working with Roland, the Japanese music technology giant that creates so much of the gear on which dance music is based—which could portend more visits by Jonson to the country in the future.

A sometimes partner-in-crime at Yellow's legendary Real Grooves nights, Mike Shannon is another Canadian dance music maestro now basing himself in Berlin, from where he tours the world and runs his Cynosure imprint. The Ontario native's productions have a focused, funky vibe that should provide just the right yin to Jonson's yang.



Where: Womb, 2-16 Maruyama-cho, Shibuya
When: Dec. 31, 9pm-late
Station: Shibuya
Web: womb.co.jp



DEC 5-15

SUPERLOSERZ

Veteran Broadway director Amon Miyamoto presents an inspirational story about never giving up, told via projection mapping, lasers, street dance and mime. The star of the show is Kansai street dance group Wrecking Crew Orchestra, led by versatile choreographer and director Yokoi. Domestic hip-hop heavyweight Krevia is also on hand as "the mysterious Mr. X."

What: Stage
When: Dec. 5-15
Where: New National Theatre, Tokyo, 1-1-1, Hon-machi, Shibuya
Station: Hatsudai
Web: nntt.jac.go.jp



DEC 8-10 & 12

A VERY SWINGIN' BASIE CHRISTMAS

The legendary Count Basie Orchestra—one of the most prominent jazz groups in the music world—comes to Tokyo just in time for the holidays. Under the leadership of director Scotty Barnhart, the Count Basie Orchestra celebrates its 80th anniversary this year with a brand new Christmas album, *A Very Swingin' Basie Christmas*. Treat yourself to the best of the best at this excellent jazz and swing performance, held right in the very heart of Tokyo.

What: Concert
When: Dec. 8-10, 7 & 9:30pm; Dec. 12, 5 & 8pm
Where: Blue Note Tokyo, 6-3-16 Minami-Aoyama, Minato
Station: Omotesando
Web: bluenote.co.jp



DEC 4-23
Chicago

The umpteenth edition of the Bob Fosse musical set in Prohibition-era Chicago returns to Japan for an extended holiday run. The musical has been a durable commodity here ever since the success of the 2002 movie version starring Renée Zellweger, Catherine Zeta-Jones and Richard Gere. This version features Charlotte Kate Fox as murderess Roxie Hart and Amra-Faye Wright as fellow murderess Velma Kelly, with Tom Hewitt as Billy Flynn, who represents them and for whose affections they compete.

What: Stage
When: Dec 4-23
Where: Tokyu Theatre Orb, 2-21-1 Shibuya
Station: Shibuya
Web: theatre-orb.com

DEC 11

YEAR END LIVE SESSION 2015

Online electronic music radio station Dublab.jp teams up with promotion outfit Kontakto for a forget-the-year party. Headlining is rapper Dengaryu, who will dole out the rhymes alongside DJ Nori, one of Japan's longest-serving house DJs, with 35 years behind the decks. The night will also feature a range of *nihonshu* (Japanese wine) spirits courtesy of Sakemaru, a group dedicated to spreading the taste of Japanese wine worldwide.

What: Clubbing
When: Dec. 11
Where: Unit, 1-34-17 Ebisu Nishi, Shibuya
Station: Daikanyama
Web: unit-tokyo.com



DEC 19-25

ROCK & ROLL

Waseda Shochiku rocks a musical double feature with Paul Dano and John Cusack both playing Beach Boy Brian Wilson in *Love & Mercy* and director Cameron Crowe's semi-autobiographical *Almost Famous* (pictured).

What: Film
Where: Waseda Shochiku, 1-5-15 Takadanobaba, Shinjuku
Station: Takadanobaba
Web: wasedashochiku.co.jp

DEC 22

MAKOTO OZONE: CHRISTMAS JAZZ NIGHT 2015

Makoto Ozone, one of Japan's most famous and talented jazz pianists, presents a night of Christmas jazz along with a big band, No Name Horses. Featuring Mozart's *Piano Concerto No. 9* (Jeunehomme), the work has been arranged for a jazz big band for the first time in Japan. A special highlight by Joseph Alessi from New York Philharmonic Orchestra as a guest performer.

What: Concert
When: Dec. 22, 7pm
Where: Bunkamura Orchard Hall, 2-24-1 Dogenzaka, Shibuya
Station: Shibuya
Web: bunkamura.co.jp



DEC 17 & 18

YO LA TENGO

One of the New York area's most hallowed, and long-lived, indie rock bands returns to Japan bearing a new package of goodies in the form of *Stuff Like That There*. Ira Kaplan, his wife and drummer Georgia Hubley, and bassist James McNew—this time accompanied by original guitarist Dave Schramm—have come up with a grab-bag of covers (everything from The Cure's *Friday I'm in Love* to Hank Williams' *I'm So Lonesome I Could Cry*). Expect another outing of indie-folk lashed with servings of noise and psychedelia.

What: Concert
When: Dec. 17 & 18
Where: WWW, 13-7 Udagawacho, Shibuya (www-shibuya.jp) & Tsutaya 0-East, 2-14-8 Dogenzaka, Shibuya (shibuya-o.com)
Station: Shibuya



DEC 19-26

THE NUTCRACKER

It's Christmas Eve and young Clara is alone in her room, gazing through her window at the festive scenery. Clara receives a special gift, a magical nutcracker that leads her on an astonishing journey of joy and Christmas miracles. With an opening scene that brings to mind modern-day Tokyo, this heartwarming performance, unfolding to the beautiful music of Tchaikovsky, ends in a most unexpected manner. A new take on an old chestnut.

What: Ballet
When: Dec. 19-26
Where: New National Theatre, 1-1-1, Honmachi, Shibuya
Station: Hatsudai
Web: nntt.jac.go.jp



UNTIL DEC 13

MAURICE SENDAK

Nadiff Modern bookshop at the Bunkamura entertainment and shopping complex in Shibuya presents an exhibition of prints by renowned American children's book author Maurice Sendak. On show are lithographs from Sedak's most treasured works, *Where the Wild Things Are* and *In the Night Kitchen*. Rarely seen in Japan, the limited edition pieces were commissioned by Sendak's publisher Harper & Row in 1971.

What: Exhibition
When: Until Dec. 13
Where: Nadiff Modern, 2-24-1 Dogenzaka, Shibuya
Station: Shibuya
Web: nadiff.com

DEC 12-18

ISLAM FILM FESTIVAL

A first event of its kind in Japan, the **Islam Film Festival**, screens nine films from Muslim filmmakers, some with both English and Japanese subtitles. Take in Oscar-nominated *Timbuktu*, about a Mali family threatened by Islamic fundamentalists, and *When Pigs Have Wings*, about a farmer's struggle tending his pigs in war-torn Gaza.

Eurospace: cineville.jp/iff



VARIOUS DEC. DATES

VIVE LE CINÉMA

Tokyo is a wonderful town for lovers of French cinema, and numerous screenings of recent fare make this month an especially good time.

THE FRENCH INSTITUTE'S program "French Touch Comedy," running until December 20, has a wide selection of funny film from 1928 through 2014.

15 Ichigaya, Funagawaracho, Shinjuku
www.institut.jp

SHIBUYA CINE PALACE presents *Saint Laurent*, a look at the complex life of the fashion designer, starting December 4.

20-11 Udagawacho, Shibuya
mitsuba-inc.co.jp/scp

IMAGE FORUM has the recent romantic comedy *2 Autumns, 3 Winters* starting December 5.

2-10-2 Shibuya
imageforum.co.jp

LE CINEMA begins a run of the Mathieu Amalric-starring coming-of-age drama *My Golden Days* (pictured) on December 19.

2-24-1 Dogenzaka, Shibuya
www.bunkamura.co.jp

WASEDA SHOCHIKU has a double feature of two recent dramas, *Gemma Boveri* and *The New Girlfriend*, December 12-18.

1-5-16 Takadanobaba, Shinjuku
wasedashochiku.co.jp



Global Jobs For Bilingual Professionals

- ✓ PUTS YOUR RESUME IN THE HANDS OF DECISION MAKERS
- ✓ JOBS SPECIFICALLY TARGETED TO BILINGUAL PROFESSIONALS
- ✓ LATEST VACANCIES FROM ALL SECTORS OF INDUSTRY

CareerEngine

japan.careerengine.org

Phraseology

東京

General Greetings

Hello/Good afternoon こんにちは *Konnichiwa*

Good morning おはようございます *Ohayogozaimasu*

Good evening こんにちは *Konbanwa*

How are you? お元気ですか? *Ogenki desuka?*

What's your name? お名前は何かですか? *Onamae wa nan desuka?*

My name is ____ 私の名前は *Watashi no namae wa ____*

Pleased to meet you はじめまして *Hajimemashite*

I understand わかります *Wakarimasu*

I don't understand わかりません *Wakarimasen*

Excuse me すみません *Sumimasen*

How do you say ____ in Japanese? ____

は日本語で何と言いますか? ____ *wa Nihongo de nanto iimasuka?*

I'm sorry, I don't speak Japanese すみません、日本語話せません

Sumimasen, nihongo hanasemasen

Thank you very much ありがとうございます *Arigato gozaimasu*

See & Do

How do I get to ____? ____ までどうやって行けばいいですか?

____ *Made wa dou yatte ikeba ii desuka?*

May I take photos? 写真を撮っても大丈夫ですか?

Shashin o tottemo daijoubu desuka?

How long does it take to get there? 時間はどれくらいかかりますか?

Jikan wa dore gurai kakarimasuka?

Does this train go to ____? この電車は ____ に行きますか?

Kono densha wa ____ ni ikimasuka?

Where is the taxi stand? タクシー乗り場はどこですか?

Taxi Noriba wa doko desuka?

Take me to this address, please この住所までお願いします

Kono juusho made onegai shimasu

Do you have free Wi-Fi here? 無料のWi-Fiはありますか?

Muryo no Wi-Fi wa arimasuka?

Shopping

How much is this? これはいくらですか? *Kore wa ikura desuka?*

Do you have a larger/smaller size? もう少し大きい/小さいサイズはありますか?

Mou sukoshi ookii/chiisai saizu wa arimasuka?

Can I pay by credit card? クレジットカードで支払えますか?

Credit Card de shiharae masuka?

I am looking for ____ Do you have it?

____ を探しています。ありますか? ____ *o sagashiteimasu. Arimasuka?*

Can I try this on? これを試着してよろしいですか?

Kore o shichaku shite yoroshii desuka?

Eating

Bon appetit いただきます *Itadakimasu*

This is delicious! おいしいです *Oishii desu*

I'd like to make a reservation 予約をしたいと思います *Yoyaku o shitai desu*

Thank you for the meal ご馳走様でした *Gochisosama deshita*

Smoking/No-smoking seat, please 喫煙席/禁煙席をお願いします

Kitsuen-seki/Kin-en-seki o onegai shimasu

Can I have the menu please? メニューをください *Menu o kudasai.*

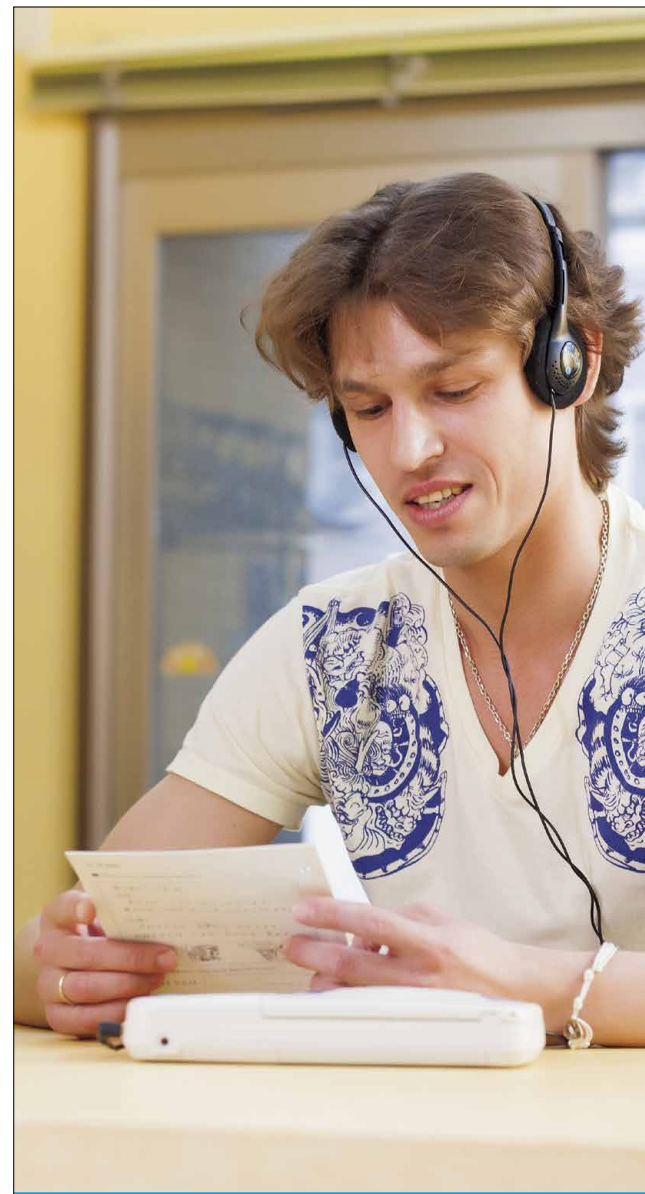
Check (Cheque) please お勘定お願いします *Okanjo onegai shimasu*

Do you have any vegetarian dishes? ベジタリアン料理はありますか?

Vegetarian ryouri wa arimasuka?

For more Japanese lessons visit study.gaijinpot.com

GaijinPot



LEARN JAPANESE AT YOUR CONVENIENCE

¥9,720/month

Includes Worksheets & Online
Reading Lessons

KUMON

www.kumon.ne.jp/jpn/english

Your Move. Our World.

Asian Tigers Mobility provides comprehensive relocation services to anywhere around the world, including within Japan.

Our services include home search and move management; supporting every step of your new adventure.



We Define Moving

Email: sales@asiantigers-japan.com

Tel: 03-6402-2371

www.asiantigers-japan.com



ASIAN TIGERS
MOBILITY

Awarded APAC Destination Services Provider of the Year at the FEM Expatriate Management & Mobility Awards 2012

 CATHAY PACIFIC HOLIDAYS



Step into the action.

Book your Hong Kong Sevens Package* today
from JPY80,000- for an unforgettable weekend.

Experience the world's best Sevens with airfare and 3-day event ticket from Cathay Pacific – the proud Official Airline and Co-title Sponsor of the Cathay Pacific/HSBC Hong Kong Sevens, 8–10 April 2016.
Book online at <http://www.cathaypacific.co.jp/CHJ/hongkongplus/rugby/english/book.php> or call 0120-886-877



 CATHAY PACIFIC

Life Well Travelled

*Terms and conditions apply. | Service and handling fees apply. | Please refer to <http://www.cathaypacific.co.jp/CHJ/hongkongplus/rugby/english/book.php> for details.

Cathay Pacific Airways Limited