

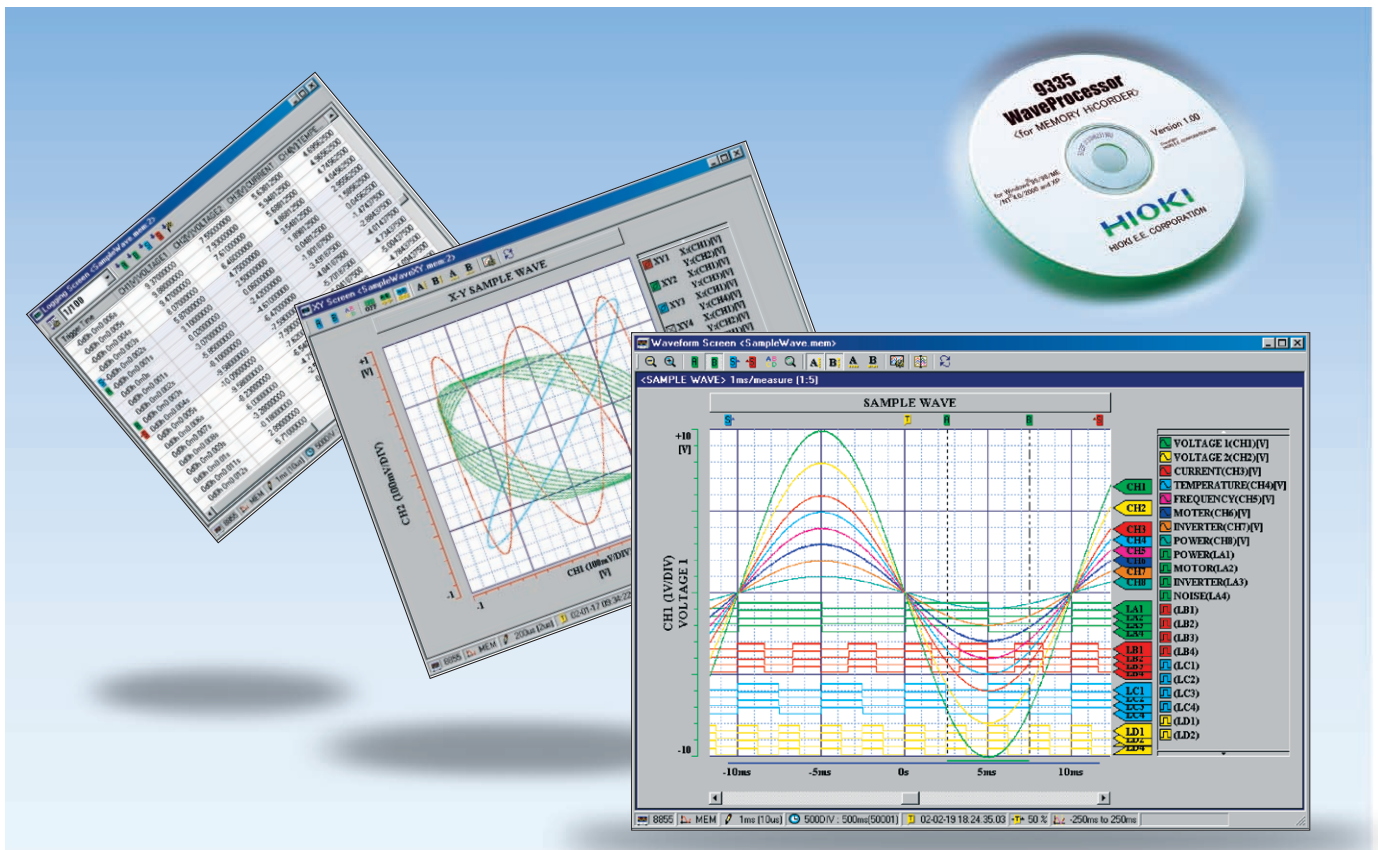


PAAAP

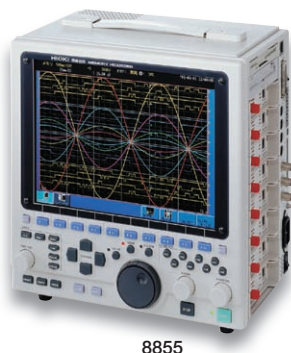
HIOKI

WAVE PROCESSOR 9335

Recorders 



Display, Convert, Calculate, and Print Waveforms with a PC



8855

Use Windows application software to display, convert, calculate and print large volumes of waveform data on a PC

The **WAVE PROCESSOR 9335** is application software for Windows that enables users to display, print, convert, and calculate on large volumes of waveform data that has been recorded and collected by instruments in the **MEMORY HiCORDER Series**. In addition to being able to handle data recorded by existing **MEMORY HiCORDERs**, the **9335** can also handle in excess of 1GB of waveform data recorded by the **MEMORY HiCORDER 8855**. This new PC application also includes functions for checking and analyzing measured results, such as conditional search, numeric calculations, and cursor measurement.



ISO 9001
JMI-0216



ISO 14001
JQA-E-90091

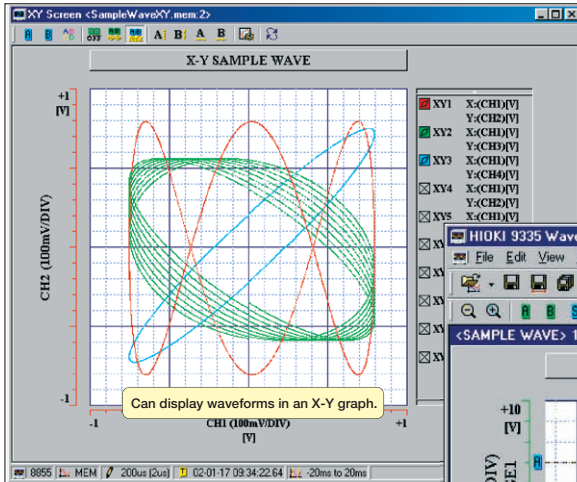


www.hioki.com

HIOKI company overview, new products, environmental considerations and other information are available on our website.

Check waveforms and measured results on a PC

Waveform Display Screen and X-Y Display Screen



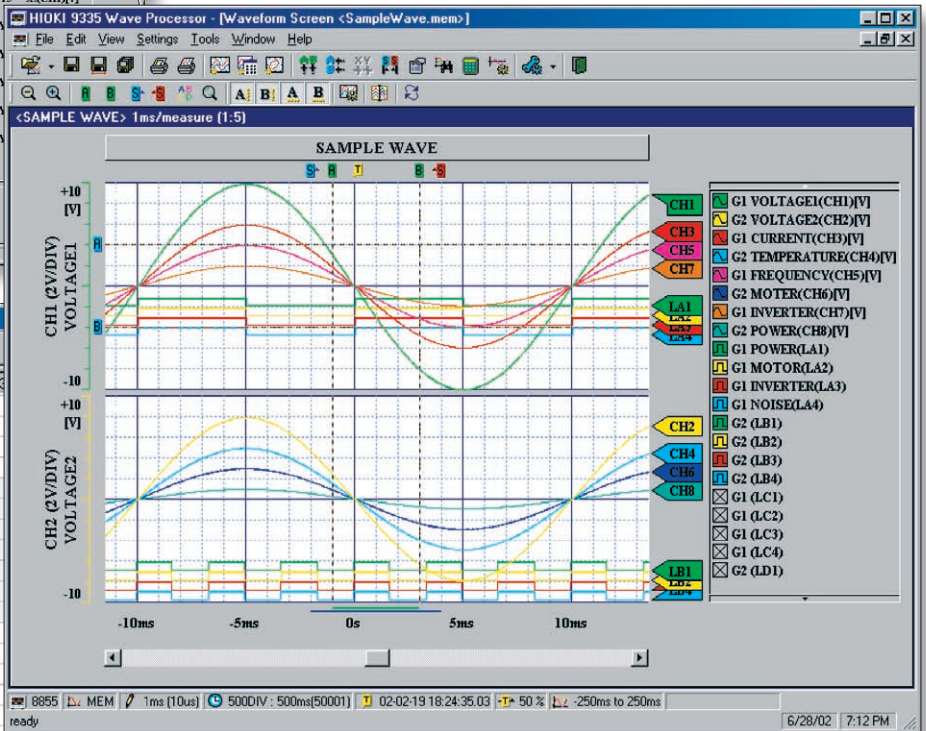
The 9335 lets you load binary files from a MEMORY HiCORDER and then check the waveform or measured results on the Waveform Display Screen and the Numeric Display Screen. The 9335 also supports the memory recorder function X-Y display. The Waveform Display Screen and the X-Y Display Screen also can be split into graphs for each channel.

Logging Screen <SampleWave.mem.2>

1/100

Trigger Time	CH1[V]:VOLTAGE1	CH2[V]:VOLTAGE2	CH3[V]:VOLTAGE3
-0d0h 0m0.006s	9.37000000	7.55000000	
-0d0h 0m0.005s	9.88000000	7.93000000	
-0d0h 0m0.004s	9.47000000	7.61000000	
-0d0h 0m0.003s	8.07000000	6.46000000	
-0d0h 0m0.002s	5.87000000	4.75000000	
-0d0h 0m0.001s	3.10000000	2.50000000	
0d0h 0m0.000s	0.02000000	0.06000000	
0d0h 0m0.001s	-3.07000000	-2.42000000	
0d0h 0m0.002s	-5.85000000	-4.61000000	
0d0h 0m0.003s	-8.10000000	-6.47000000	
0d0h 0m0.004s	-9.58000000	-7.59000000	
0d0h 0m0.009s	-3.28000000	-2.53000000	
0d0h 0m0.01s	-0.18000000	-0.03000000	

The acquired data can be displayed as digital values on a timeline. Further, waveform images and digital values can be displayed simultaneously.

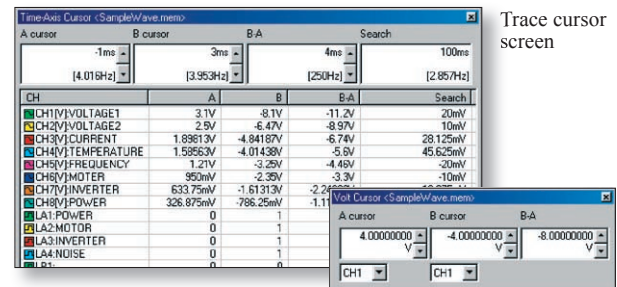


Waveform Info. <SampleWave.mem>

CH	Comment	Unit	Mode	Range	LPF	AAF	Coupling
CH1	VOLTAGE1	8950 analog	VOLTAGE	1V	OFF	---	DC
CH2	VOLTAGE2	8952 RMS	VOLTAGE	1V	OFF	---	DC
CH3	CURRENT	8953 H-RESO	VOLTAGE	1V	OFF	OFF	DC
CH4	TEMPERATURE	8953 H-RESO	VOLTAGE	1V	OFF	OFF	DC
CH5	FREQUENCY	8950 analog	VOLTAGE	1V	OFF	---	DC
CH6	MOTOR	8952 RMS	VOLTAGE	1V	OFF	---	DC
CH7	INVERTER	8953 H-RESO	VOLTAGE	1V	OFF	OFF	DC
CH8	POWER	8953 H-RESO	VOLTAGE	1V	OFF	OFF	DC

Displays waveform information.

Waveform display screen



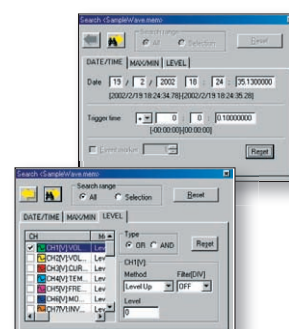
Voltage cursor screen

Fast search by date, time, level, etc.

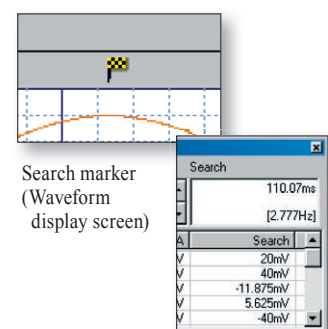
The 9335 allows you to jump to a position that satisfies certain conditions, and display the waveform and the measured value at that position. This function can also be used as a re-trigger function.

The following search criteria can also be specified:

- Date and time
- Maximum value
- Absolute maximum value
- Level up
- Window in
- Logic pattern (logic data only)
- Event mark
- Minimum value
- Absolute minimum value
- Level down
- Window out

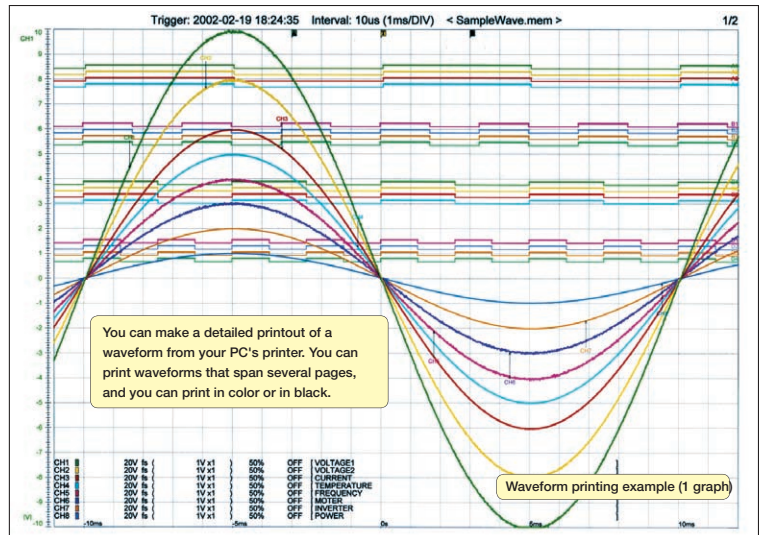
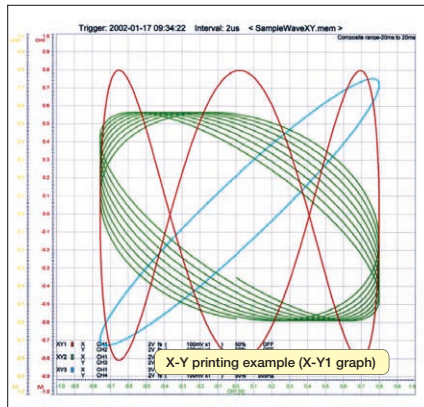


Settings screen for search criteria
(Top: Time search; bottom: Conditional search)

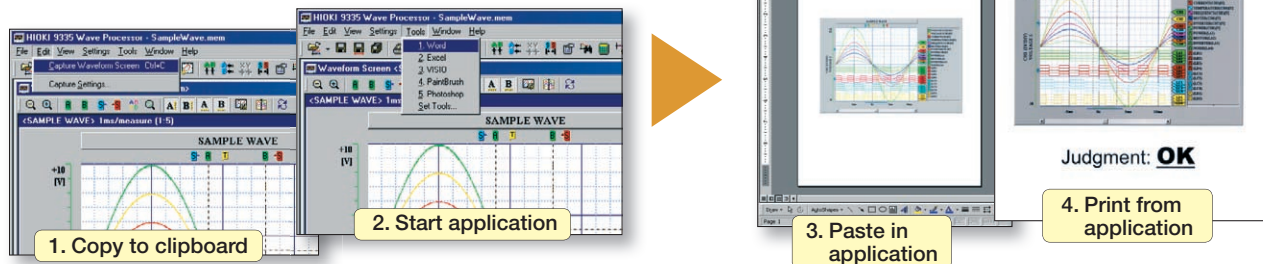


Measurement value at the search position
(Cursor screen)

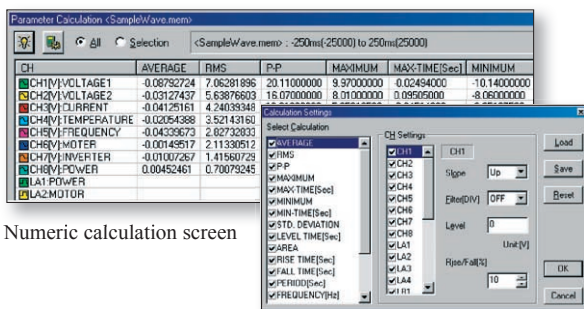
Printing and copying the waveform screen



When a waveform is displayed on the screen, you can copy that waveform to the Windows clipboard, or make a hardcopy of the waveform. You can also paste the waveform into text, as well as associate the waveform with whatever application you want to start when you open that waveform.



Statistical functions make data evaluation easy



Numeric calculation screen

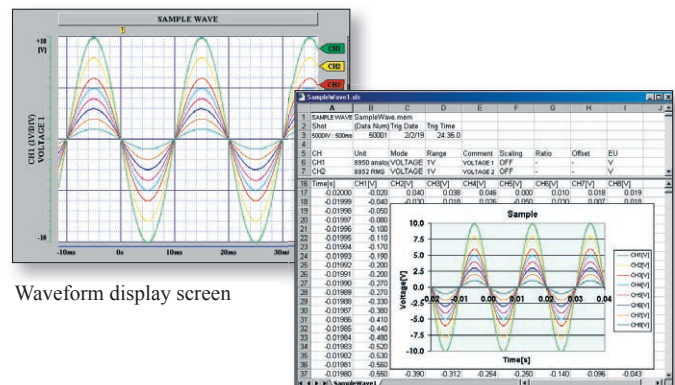
Calculation setup screen

19 types of numerical calculations can be displayed for all the areas or a specific area only. In addition to effective value, maximum value, frequency, and other standard values, you can also calculate values for characteristics such as duty ratio and rise time.

Use the **WAVE PROCESSOR** to calculate the following: average value, maximum value, minimum value, maximum time, minimum time, peak-to-peak value, effective value, area, standard deviation, ON time, OFF time, number of times turned ON, frequency, period, duty ratio, pulse width, rise time, fall time, time to level

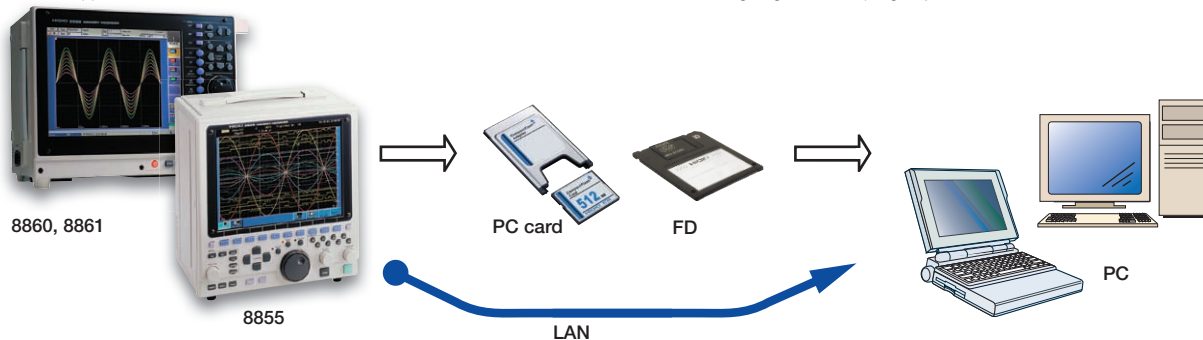
Converting data to CSV format

A displayed waveform can be converted into a CSV file, either in whole or in part. Cropping on/off, the cropping method, the time axis format, and other variables can be set. Converting to a CSV file allows you to use the data with spreadsheet software, etc.



A sample screen showing data that has been converted into CSV format and opened in Excel.

Note: Supports 8860-50/8860, 8861-50/8861 series MEM, REC and REC&MEM data recorded using single-axis sampling only.



(Note) The use of MO disks, PC cards, and floppy disks and the availability of a LAN connection depend on the specifications of the recorder model in question.

● Displaying and printing measurement results through a PC

The **WAVE PROCESSOR 9335** is a PC application software that can be used to display and print waveform data recorded by a **MEMORY HiCORDER**, such as the 8855 or the 8841, 8842.

The application can load more than 1GB of waveform data recorded by the **MEMORY HiCORDER 8855**. (The maximum size of data files that can be handled in Windows 95/98/Me is 1GB, and may be less depending on the PC environment.)

Waveform data files can be transferred from a **MEMORY HiCORDER** to a PC via a PC card, MO disc, floppy disk, or LAN connection.

● Multiple display screens

In addition to a waveform display screen, the **9335** also provides a numeric value display screen and an X-Y display screen. Waveform data can also be displayed in multiple display screens simultaneously for comparison. The **9335** can also display a search screen, numeric calculation screen, cursor screen and other screens that can be used for detailed study and analysis.

● Support for creating reports with the print and copy functions

You can make detailed printouts of waveforms from your PC's printer, as well as select color or black and white printing, screen partitions, gauges, and other options. Make a hard copy of the waveform image that is displayed on the screen, or copy it to the clipboard. Edit the data using a word processor such as Word by simply pasting the image into documents.

● Converting data and opening it in spreadsheets

Widely used spreadsheet programs can be used to edit measurement data and create reports. The **WAVE PROCESSOR 9335** allows you to convert acquired waveform data to CSV format.

WAVE PROCESSOR 9335

Compatible with Windows 2000/XP/Vista (32-bit), Windows 7 (32/64-bit)

Specifications

Compatible devices	Model 8861-50/8860-50 (9335 ver.1.13 or later, not compatible with dual time-axis data, compatible only to MEM, REC, and REC & MEM data recorded using single-axis sampling only), Model 8861/8860 (9335 ver.1.10 or later, not compatible with dual time-axis data, compatible only to MEM, REC, and REC & MEM data recorded using single-axis sampling only), Model 8870, 8855, 8847, 8842, 8841, 8840, 8835-01, 8835, 8826, 8825, 8808-01, 8807-01, 8808-51, 8807-51 (excluding harmonic analysis function), 8731-10, 8730-10, 8720, 8715-01, 8714-01
Supplied Media	One CD-R disc
Operating environment	Personal computer equipped with Pentium (133 MHz) or better CPU and at least 32 MB of memory, Running under Windows 2000/XP/Vista (32-bit), or Windows 7 (32-bit/64-bit) (Recommended system: Pentium (200 MHz) or better with at least 64 MB of memory)
Display functions	■ Waveform Display : Displays image of loaded waveform data on screen ■ X-Y display : Memory (MEM) and power (POW) only ■ Digital Value Display : Displays waveform data as digital values, and allows images and digital values to be displayed simultaneously ■ Cursor function : Allows you to display the time and potential differences between cursors A and B, the time and electrical potential between each cursor, and the absolute and relative times ■ Scroll function ■ Maximum number of channels : 32 analog channels, 32 logic channels ■ Gauge display : Time gauge, voltage axis gauge ■ Graphical input
File loading	■ Loading data format : Memory (MEM, except for data stored in real time); recorder (REC), effective value recorder (RMS), power (POW) ■ Maximum loadable file size : Maximum size that can be stored by hardware (The maximum size that can be handled may be smaller in some PC environments.)
Data conversion functions	■ Target data : All data, data between cursors ■ Data interval : Simple interval (number of samples can be specified) ■ Data conversion : Converts analog waveform data into numeric values, converts logic data into binary ■ Data conversion format : CSV format, tab delimited, space delimited (selectable when data is saved) ■ Conversion channel : Can be selected when data is saved ■ Batch conversion : Multiple files can be specified for batch conversion
Printing functions	■ Printing format : Can print with no partitions, 2 to 16 partitions, 2 to 16 columns, X-Y 1 to 4 partitions, gauges, channel comments ■ Print preview ■ Waveform screen hard copy ■ Compatible printers : Any printer supported by the OS (color or black and white)
Parameter calculation functions	■ Target data : All data, data between cursors ■ Calculation items : Average value, effective value, peak value, maximum value, time of maximum value, minimum value, time of minimum value, rise time, fall time, standard deviation, area, cycle, frequency, pulse width, duty ratio, ON time, OFF time, number of times turned ON
Other	■ Search functions : Event mark, date and time (absolute time, time relative to trigger), maximum, minimum, absolute maximum, absolute minimum, level up/down, window in/out ■ Clipboard copy : Waveform screen, cursor value, digital value, file information ■ Startup of other applications : Other applications can be launched by specifying run file

Note: Company names and Product names appearing in this catalog are trademarks or registered trademarks of various companies.

HIOKI
HIOKI E. E. CORPORATION

HEAD OFFICE :

81 Koizumi, Ueda, Nagano, 386-1192, Japan
TEL +81-268-28-0562 / FAX +81-268-28-0568
http://www.hioki.co.jp / E-mail: os-com@hioki.co.jp

HIOKI USA CORPORATION :

6 Corporate Drive, Cranbury, NJ 08512 USA
TEL +1-609-409-9109 / FAX +1-609-409-9108
http://www.hiokiusa.com / E-mail: hioki@hiokiusa.com

HIOKI (Shanghai) Sales & Trading Co., Ltd. :
1608-1610 Shanghai Times Square Office, 93 Huai Hai Zhong Road, Shanghai, P.R.China POSTCODE: 200021
TEL +86-21-6391-0090/0092 FAX +86-21-6391-0360
http://www.hioki.cn / E-mail: info-sh@hioki.com.cn

Beijing Office :

TEL +86-10-5867-4080/4081 FAX +86-10-5867-4090
E-mail: info-bj@hioki.com.cn

Guangzhou Office :

TEL +86-20-38392673/2676 FAX +86-20-38392679
E-mail: info-gz@hioki.com.cn

HIOKI INDIA PRIVATE LIMITED :

Khandela House, 24 Gulmohar Colony Indore 452 018 (M.P.), India
TEL +91-731-4223901, 4223902 FAX +91-731-4223903
http://www.hioki.in / E-mail: info@hioki.in

РАДАР - ОФИЦИАЛЬНЫЙ ДИЛЕР HIOKI



РАДАР

РОССИЯ, 198152, Санкт-Петербург
Краснопутиловская ул., д.25

Тел./факс +7 (812) 600-48-89

Тел.: +7 (812) 375-32-44

www.radar1.ru

info@radar1.ru

9335E6-06E-00P

Printed in Japan