

# Gemstone and their cuts

By Dashrath International

# Mine

- Gemstones are extracted from different mines all around the world
- Whether by surface mining, or open pit or strip mining
- The Picture is an open pit mining site in Zambia called Kariba



# Raw material



Raw Gemstones, on left picture raw amethyst before being cut  
On right picture a beautiful Topaze crystal.

First Gemstones are roughly cut with a cutter plier or a circular saw in order to eliminates a maximum of inclusion.



Black spinel, before and after  
Being cut

# Standard shapes



These are the most used shape in jewel industry

There is also standard size; 1mm, 1.25 mm, 1.5 mm, 1.75 mm, 2mm, 2.5mm, 3mm, 4mm, 5mm, 6mm, 7mm, 8mm, 9mm, 10mm, 12mm for round shapes

And 3\*4mm, 3\*5mm, 4\*6mm, 7\*5mm, 6\*8mm, 7\*9mm, 8\*10mm, 10\*12mm, 10\*14mm, 12\*16mm for Ovale shapes

# Other popular Shapes



Asscher cut was first designed By Joseph ASSCHER in 1902, this Shape is square with dramatic Cut corners forming almost an octogon

By cutting a gemstone's pavilion A special way, a star is observable Through the table, this is called A star cut gemstone



Bubble cut is defined by inclusion Of round carved shape on Gemstone facets

When the table of a gemstone Is only composed by square, The cut is called « Checkboard »



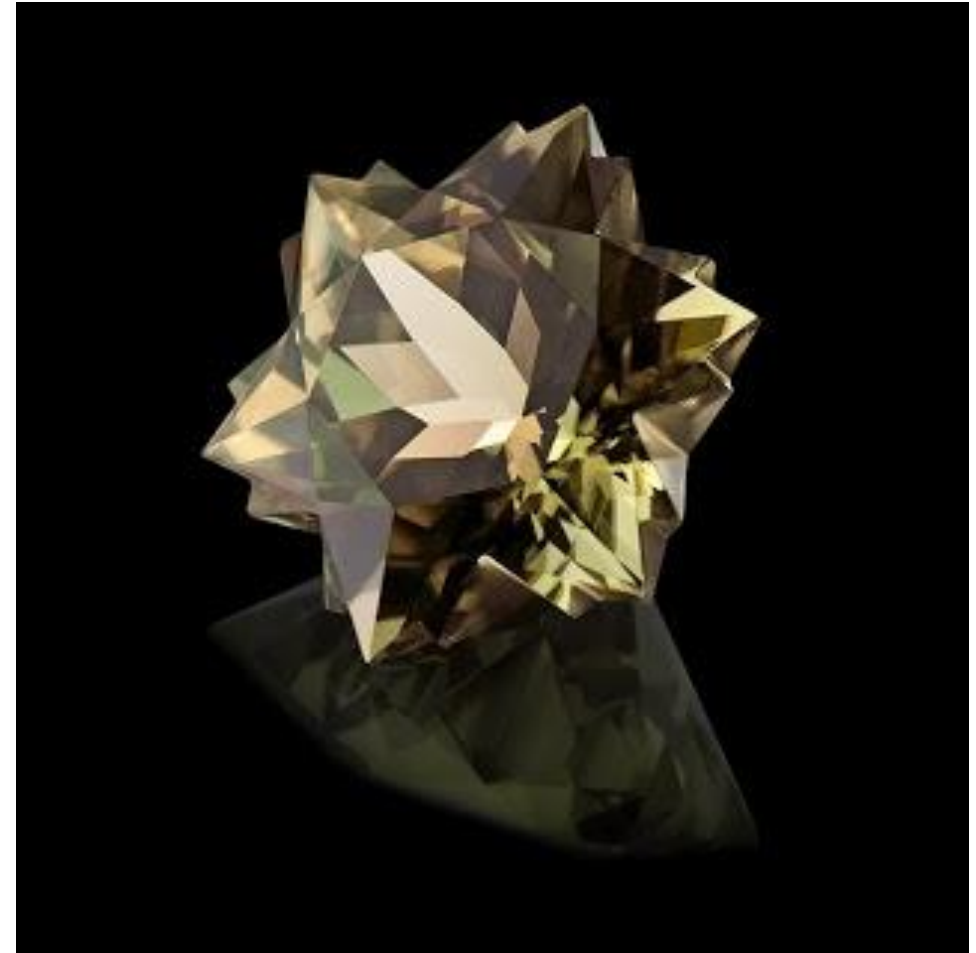
A Bufftop gemstone is a stone Where the pavilion has been Cut faceted, and the table has Been cut cabochon



# Fancy shapes

Fancy shapes means custom shapes, any shape is possible  
For example this Zultanite shaped like a snowflake

Other examples of fancy shapes



# Facets

The different kinds of facets enhance the aspect of gemstones



Honeycomb facets

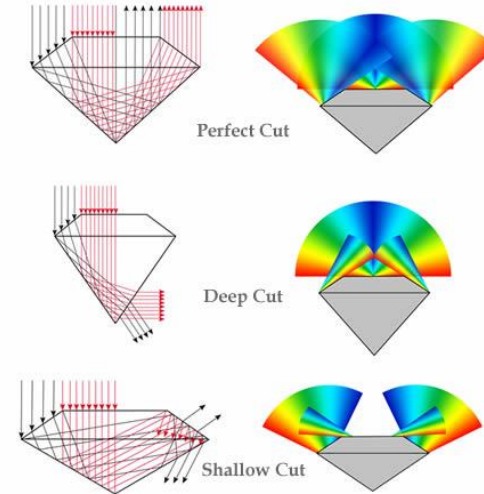
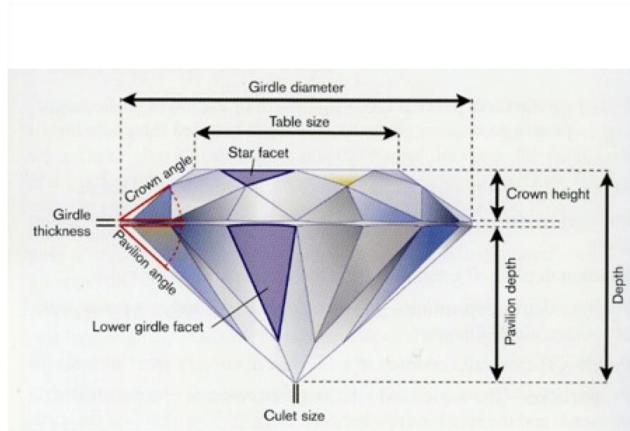


Square facets



Triangle facets

# The art of facetting



The final gemstone, must not be too shallow nor Too deep, because of light reflection.



Standard 58 facets



An example of 144 facets



Multifacets or « Portuguese » cut



# Cabochon

Oposed to faceted gemstone, cabochon is cutting the gemstones To have a round smooth surface.



# Concave cut

The gemstone can be cut « concave », that means the facet are « curved » Instead to be plan, which gives more narrow and long reflection.

Concave cut can improve brilliance of gemstones but at the same Time provide a diffusing effect



# Encarving



Sky Blue Topaze carved crystal skull

Pink Tourmaline carving leaf



Statue carved in Labradorite



[www.gemstoneandjewellery.com](http://www.gemstoneandjewellery.com)



+91-141-4019442



[gemstonenjwelry@gmail.com](mailto:gemstonenjwelry@gmail.com)



Dashrath International



Dashrath International



Dashrath International