



DIVERSIFIED
COMPANIES

PLANET FITNESS PLAZA

ON EAST SIDE OF POWERLINE ROAD, JUST NORTH OF McNAB ROAD
IN THE UPTOWN FORT LAUDERDALE/CYPRESS CREEK SUBMARKET

1400 S. POWERLINE ROAD, POMPANO BEACH FLORIDA 33069



OUTPARCEL WITH DRIVE-THRU IS AVAILABLE!

- ✓ Highest Daytime Population in **ALL OF BROWARD COUNTY**
(215,598+ Employees within 5 miles)
- ✓ 7 Universities, 1,400+ Hotel Rooms, Numerous Corporations & FXE Airport in Immediate Vicinity
- ✓ Outparcel for Ground Lease or BTS
- ✓ Signalized Ingress/Egress
- ✓ Oversized Monument Sign
- ✓ Designated Growth Corridor by City of Fort Lauderdale
(Uptown Fort Lauderdale)
- ✓ Planet Fitness: Open 24 Hours per Day!
- ✓ Surrounded by Residential Golf Communities: Cypress Bend & Palm Aire
- ✓ Nearby expanding John Knox Village, Pompano Racing Park, & Isle Casino
- ✓ Excellent Transportation: FXE, Tri-Rail, and Bus Routes

JOIN



@ PLANET
FITNESS PLAZA...

**PLANET FITNESS IS THE MOST SUCCESSFUL AND FASTEST GROWING
FITNESS FRANCHISE IN THE COUNTRY! NOW OPEN!
THIS LOCATION IS PROJECTING +10,000 MEMBERSHIPS!!!**

FOR ADDITIONAL INFORMATION PLEASE CONTACT:

LAUREN MCGEE
LAUREN@DIVERSIFIEDCOS.COM
CELL: 954.242.8425

954.776.1005 ext. 200

CARY GOLDBERG
CARY@DIVERSIFIEDCOS.COM
CELL: 954.673.0162

**HIGHEST DAYTIME POPULATION
IN ALL OF BROWARD COUNTY!
+74,000 PEOPLE IN 1.5 MILE RADIUS!**

PLANET FITNESS PLAZA

1400 S. POWERLINE ROAD, POMPANO BEACH, FLORIDA 33069

44,318 SQUARE FOOT RETAIL CENTER, ANCHORED BY PLANET FITNESS



**PALM AIRE IS
CURRENTLY
DEVELOPING...**

**614 GARDEN APARTMENTS,
110 TOWNHOMES,
150 SINGLE-FAMILY HOMES &
404 LUXURY RESIDENTIAL UNITS!**

TOTALING 1,278 NEW HOUSING UNITS!

TARGETING TENANTS LIKE...

**MEDICAL SUPPLY – PHARMACY – SALON – RESTAURANT
OFFICE – RETAIL – HEALTH & WELLNESS – DRY CLEANER**



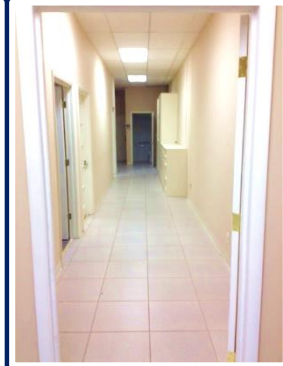


DIVERSIFIED
COMPANIES

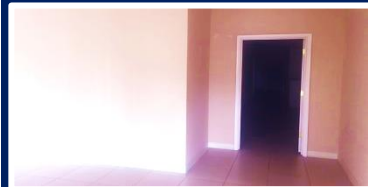
PLANET FITNESS PLAZA

1400 S. POWERLINE ROAD, POMPANO BEACH FLORIDA 33069

A 44,318 SQUARE FOOT RETAIL CENTER, ANCHORED BY PLANET FITNESS



**NOW IS THE TIME TO
TAKE ADVANTAGE OF
THIS CHANGING
MARKET, VISIBILITY, &
TRAFFIC COUNTS IN A
COMPLETELY
RENOVATED
PLAZA!**



FOR ADDITIONAL INFORMATION PLEASE CONTACT:

LAUREN MCGEE

LAUREN@DIVERSIFIEDCOS.COM

CELL: 954.242.8425

954.776.1005 ext. 200

CARY GOLDBERG

CARY@DIVERSIFIEDCOS.COM

CELL: 954.673.0162



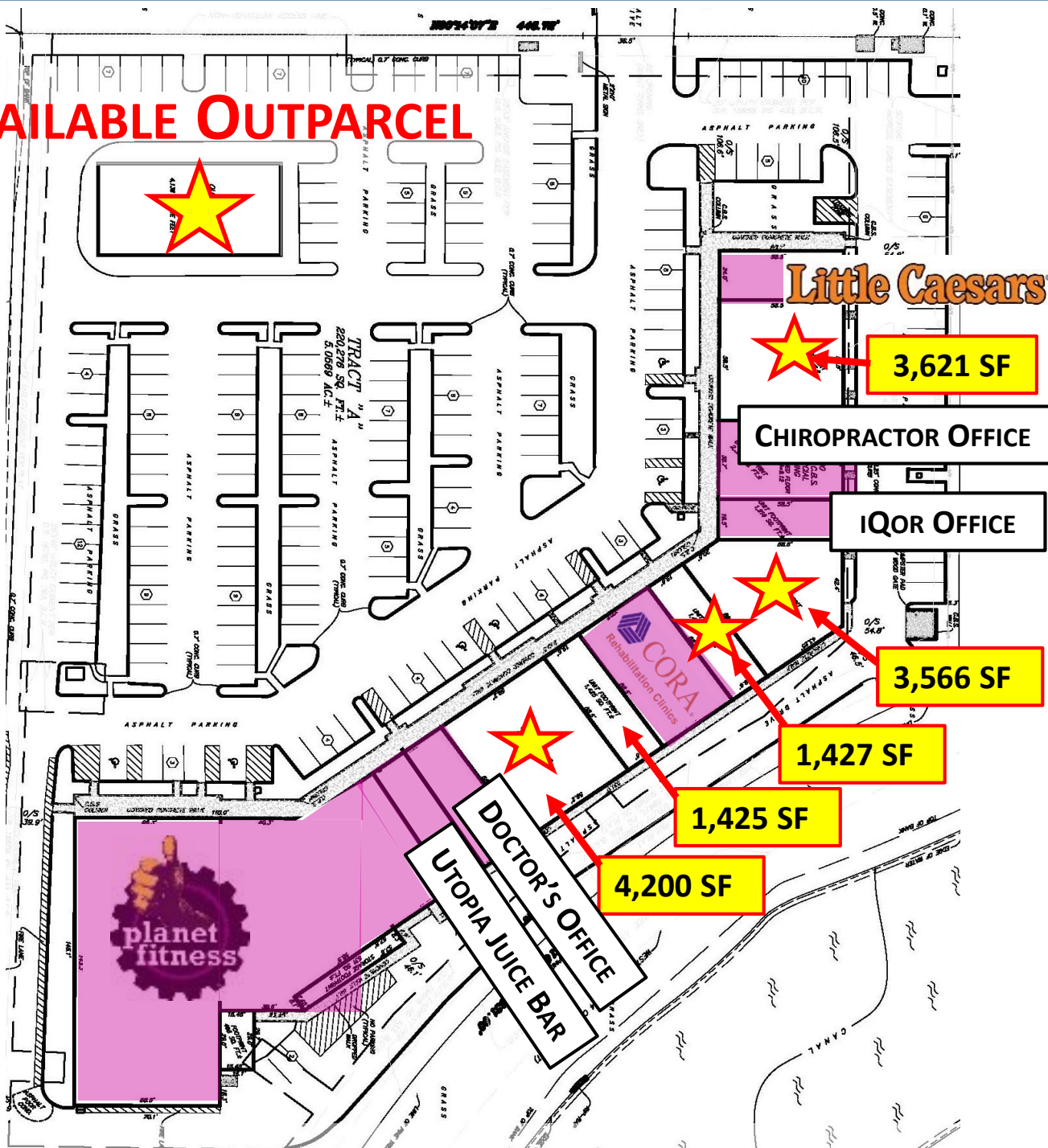
DIVERSIFIED
COMPANIES

PLANET FITNESS PLAZA

1400 S. POWERLINE ROAD, POMPANO BEACH FLORIDA 33069

A 44,318 SQUARE FOOT RETAIL CENTER, ANCHORED BY PLANET FITNESS

AVAILABLE OUTPARCEL



SPACES CAN BE SUB-DIVIDED OR COMBINED

FOR ADDITIONAL INFORMATION PLEASE CONTACT:

LAUREN MCGEE

LAUREN@DIVERSIFIEDCOS.COM

CELL: 954.242.8425

954.776.1005 ext. 200

CARY GOLDBERG

CARY@DIVERSIFIEDCOS.COM

CELL: 954.673.0162