

# **AIRFIX** by Craft Master

Constant Scale Hobby Kits



ON THE LAND  
IN THE AIR  
ON THE SEA





**BUILD WITH  
SIX AUTHENTIC KIT LINES  
FROM 29c to \$3.98:**

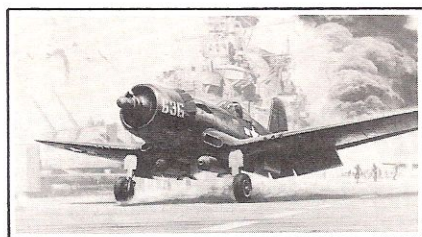
- Air Force Squadron 72
- Automobile Rally Team 32
- Army Assault Group 76
- Navy Task Force 600
- Classic Ships
- Airlines Commercial Flight 144

Here is the complete Airfix line of hobby kits . . . the favorite line of builders who insist on quality, authenticity, and detail. And now backed by the quality tradition of Craft Master Corporation. Whether you take to the sky, sea or land, you'll find Airfix gives you wide variety, simplified instructions, and exact replicas. And constant scale! Airfix kits within each group are all built in scale with each other, enabling you to create a collection of models that look great together. Check through the Airfix line . . . then check in at your favorite hobby shop or hobby department and join up. A new world of building fun is waiting!

*by* **Craft Master**

**JOIN AND BUILD THE**

**AIRFIX AIR FORCE**  
**SQUADRON 72**



**CHANCE-VOUGHT F4U-1D CORSAIR** — Finest shipboard fighter of WW II, the Corsair was superior in most respects to the best land-based aircraft. The prototype XF4U-1 first flew in May 1940.  
#1-46 . . . . . Retail: 46¢

Plunge into the dog-fights over no-man's land with your Sopwith Camel . . . take off with a payload in your Flying Fortress. You're at the controls when you join the Airfix Air Force. You know the plane you go with is the real thing — precision made and detailed to perfection. And if you're a formation man, you know that all the planes you build will be in perfect proportion to each other. That's because every Airfix plane is in 1/72 constant scale. And building an Airfix model is as easy as it is fun. Complete, simplified plans and easy-to-follow instructions are in every kit. So is a display stand for showcase mounting. Join up now at your favorite hobby shop or hobby department.



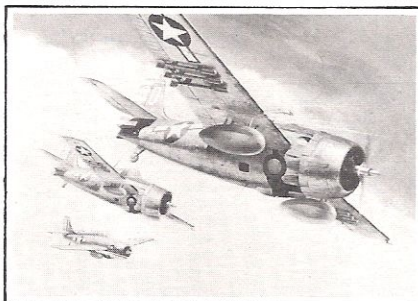


## QUALITY, DETAIL AND REALISM



**CURTISS P-40E 1A WARHAWK**—First fighter to be mass produced by U.S., and during the first half of WW II, the most widely-used of U.S. fighter planes.

#2-46 .....Retail: 46¢



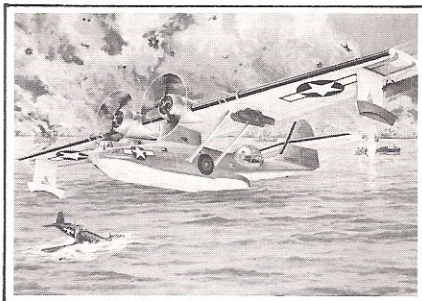
**GRUMMAN FM-2 WILDCAT VI**—Built by General Motors to Grumman design, the Wildcat VI was the final production version of this famous Navy series.

#3-46 .....Retail: 46¢



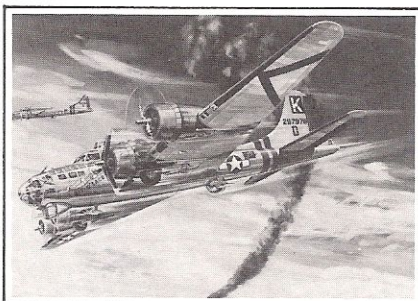
**YAK-9D**—YAKs were the most famous Soviet warplanes to see action during WW II, and typified the Russian policy of developing a single design.

#4-46 .....Retail: 46¢



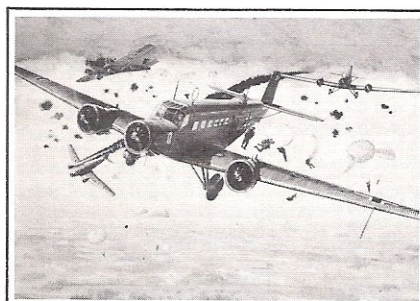
**PBV-5A CATALINA** — Mass produced from 1935 to 1945, the Catalina was the most successful flying boat of all time. Used for patrol and anti-sub work.

#1-163 .....Retail: \$1.63



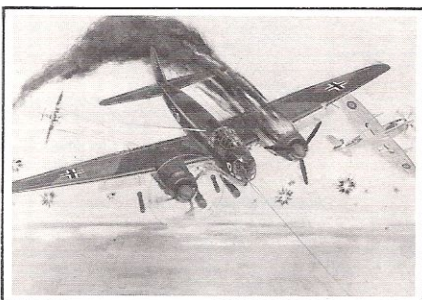
**FLYING FORTRESS B-17G**—Famous Allied day bomber used during WW II. Maximum speed 300 m.p.h. It carried a bomb load up to 17,600 pounds.

#2-163 .....Retail: \$1.63



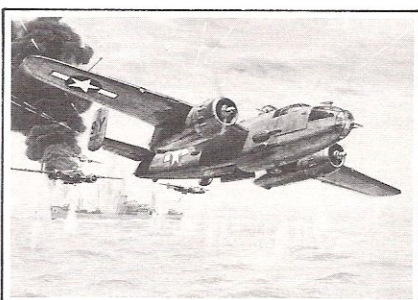
**JU52** — One of the most important German aircraft of WW II was the slow, ungainly "Iron Annie." It had a top speed of 165 m.p.h. and range of 800 miles.

#3-163 .....Retail: \$1.63



**JU88**—Designed as a high-speed bomber, the JU88 was a Luftwaffe mainstay during WW II. It carried 6,600 pounds of bombs at a top speed of 290 m.p.h.

#1-109 .....Retail: \$1.09



**B-25** — Named after "Billy" Mitchell, leading exponent of U.S. air power, the B-25 earned undying fame for the Tokyo raid of 1942 from the carrier Hornet.

#2-109 .....Retail: \$1.09



**DOUGLAS C-47**—Most famous and important transport ever built. Many still in use today. Known as DC-3 in civilian version. Top speed is 220 m.p.h.

#2-98 .....Retail: 98¢



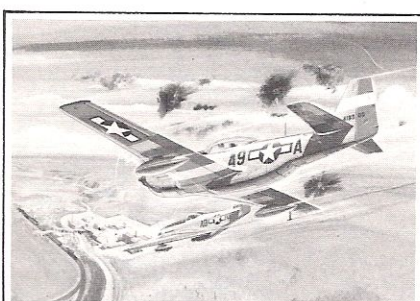
**DOUGLAS BOSTON III**—Powered by two 1600 hp Wright Double Cyclone engines, Boston had top speed of 304 m.p.h. Armed with 4 machine guns in nose, 2 in rear cockpit.

#1-89 .....Retail: 89¢



**LOCKHEED F-104G STARFIGHTER** — U.S. Air Force interceptor. Top speed over Mach 2. Carries guns, missiles, and bombs.

#10-49 .....Retail: 49¢



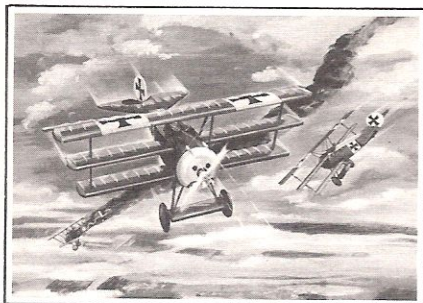
**MUSTANG** — Highly successful strafing and fighter plane used extensively in World War II by American and British pilots. Top speed was 437 m.p.h.

#1-39 .....Retail: 39¢



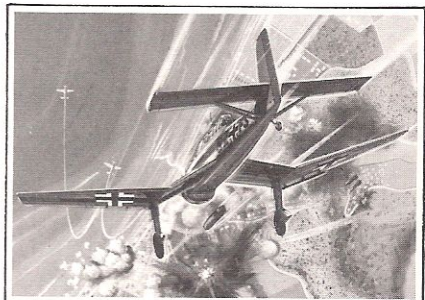


## 1/72 Constant Scale Plane Kits



**FOKKER TRIPLANE** — Leading World War I German fighter. Used by Baron Von Richthofen to become war's leading Ace at the time of his death. Top speed was 120 m.p.h.

#1-29 .....Retail: 29¢



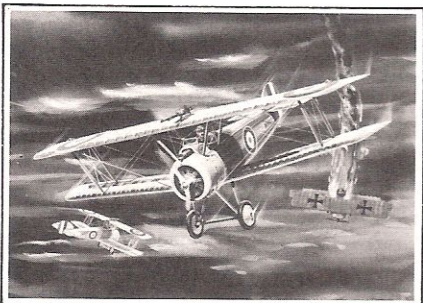
**STUKA JU-87** — Most feared dive bomber employed by the German Luftwaffe during World War II. Top speed of the JU-87 was substantially over 200 m.p.h.

#2-39 .....Retail: 39¢



**FOCKE WOLFE 190** — One of the most advanced German fighter plane designs, which influenced British aircraft design late in World War II. Top speed of 440 m.p.h.

#6-39 .....Retail: 39¢



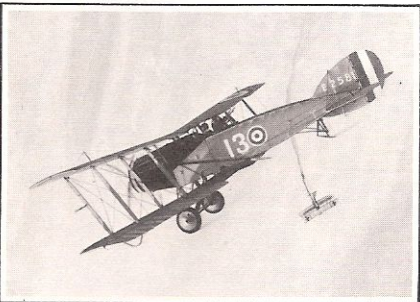
**SOPWITH CAMEL** — Favorite Allied fighter. Built in 1916. Used by Capt. Roy Brown to shoot down Baron Von Richthofen. Top speed was approximately 125 m.p.h.

#2-29 .....Retail: 29¢



**SPITFIRE** — One of the most famous fighter planes of all time. It fought and won the Battle of Britain almost single-handed. Top speed was over 400 m.p.h.

#3-39 .....Retail: 39¢



**BRISTOL FIGHTER** — Known as the "Brisfit." It was an outstanding aircraft of World War I. Top speed was 120 m.p.h., and service ceiling was 20,000 feet.

#7-39 .....Retail: 39¢



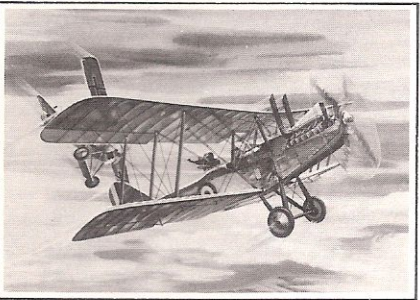
**ALBATROSS SCOUT** — Extremely fast and exceptionally light German fighter plane used early in World War I. Top speed of the Scout was in excess of 130 m.p.h.

#3-29 .....Retail: 29¢



**MESSERSCHMITT ME-109** — The ME-109 was Germany's most widely-used fighter aircraft throughout most of World War II. It had a top speed of 400 m.p.h.

#4-39 .....Retail: 39¢



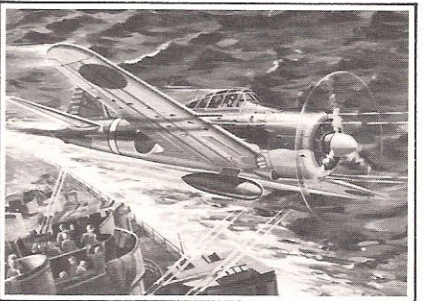
**RE-8** — Introduced in 1916 and used primarily for artillery observation. The RE-8 pioneered radio communication from the air. Top speed was 120 m.p.h.

#8-39 .....Retail: 39¢



**TIGER MOTH** — First basic training plane, built in 1931 to train RAF pilots. Used as a trainer in World War II also. Top speed of the Tiger Moth was 150 m.p.h.

#4-29 .....Retail: 29¢



**JAPANESE ZERO** — Best known of all World War II Japanese aircraft, and one of Japan's most successful carrier-based airplanes. Top speed was 317 m.p.h.

#5-39 .....Retail: 39¢



**NORTH AMERICAN HARVARD II** — The Harvard was an extremely versatile aircraft, and could be armed with machine guns, bombs, or rockets. Top speed was 212 m.p.h.

#9-39 .....Retail: 39¢





## DISPLAY STAND WITH EACH KIT



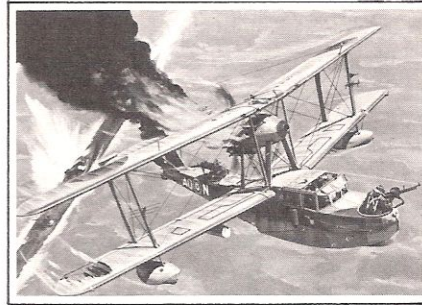
**HAWKER TYPHOON 1B** — Maximum speed of 374 m.p.h. at sea level. Armament consisted of four 20 mm cannons, and underwing loads of bombs, mines, or rockets.

#10-39 .....Retail: 39¢



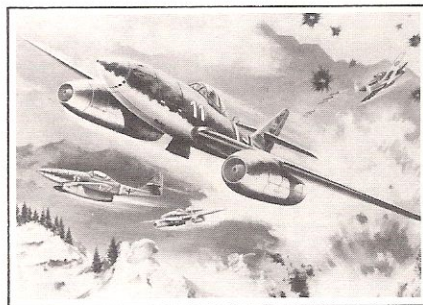
**MOSQUITO F.V. VI** — Very fast twin engine aircraft used in World War II. It was mostly of wood construction. Top speed of the Mosquito was 390 m.p.h.

#1-49 .....Retail: 49¢



**SUPERMARINE WALRUS II** — Powered by a 775 hp Bristol Pegasus VI pusher engine, giving top speed of 135 m.p.h. and range of 600 miles. Carried 2 Vickers K machine guns.

#5-49 .....Retail: 49¢



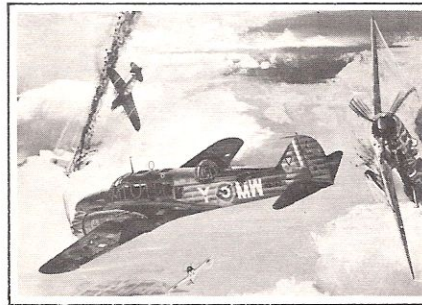
**MESSERSCHMITT ME 262A** — Powered by two turbojets giving it a maximum speed of 540 m.p.h. Armament consisted of four 30 mm cannons and two 1,100 bombs.

#11-39 .....Retail: 39¢



**LIGHTNING P-38** — Used by American Air Force for escort duties, photo reconnaissance, and fighter purposes during World War II. Its top speed was 420 m.p.h.

#2-49 .....Retail: 49¢



**AVRO ANSON I** — Maximum speed of 188 m.p.h. and range of 750 miles. It had one Browning machine gun and one Vickers machine gun. Maximum bomb load was 360 lbs.

#6-49 .....Retail: 49¢



**MIG 15** — Best known of Russian aircraft. Powered by Rolls Royce turbo-jets for a top speed of 660 m.p.h. Carries two 23 mm NS cannons and one 37 mm cannon.

#12-39 .....Retail: 39¢



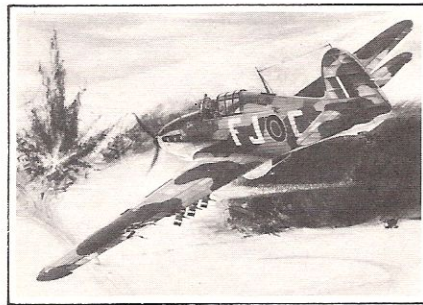
**FAIREY SWORDFISH** — Famous torpedo spotter bi-plane. It was credited with sinking the German Battleship Bismarck. Top speed of the Swordfish was 138 m.p.h.

#3-49 .....Retail: 49¢



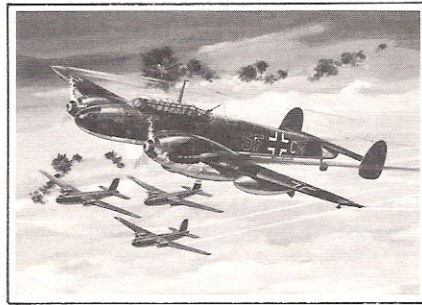
**BRISTOL BEAUFIGHTER T.F.X.** — First flown in 1939, it had a top speed of 320 m.p.h. and a loaded range of 1,400 miles. Carried a torpedo, 4 cannons, and machine guns.

#7-49 .....Retail: 49¢



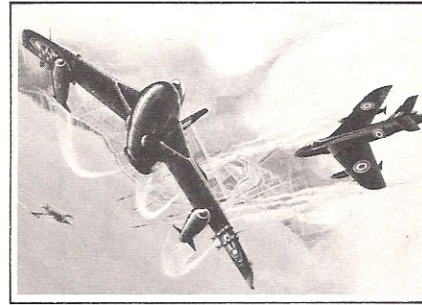
**HAWKER HURRICANE IV R.P.** — The Hawker Hurricane was primarily a ground attack aircraft. Armed with eight rocket projectiles, it had a top speed of 340 m.p.h.

#13-39 .....Retail: 39¢



**MESSERSCHMITT ME-110** — Two seat, twin engine strategic fighter designed to accompany bomber formations. Used heavily in Battle of Britain. Top speed of 340 m.p.h.

#4-49 .....Retail: 49¢



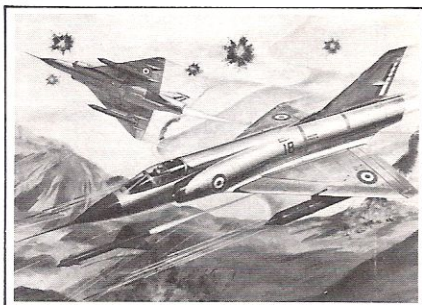
**HAWKER HUNTER F.6** — Powered by Rolls Royce Avon Turbojet for top speed of 700 m.p.h. and ceiling of 50,000 feet. Carries 30 mm Aden cannons, plus bombs and rockets.

#8-49 .....Retail: 49¢



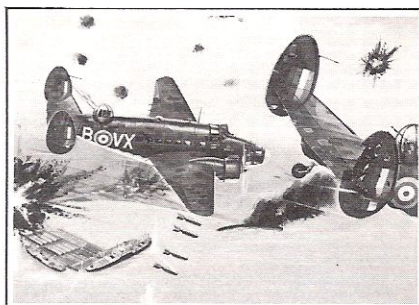


## The World's Greatest Airplanes



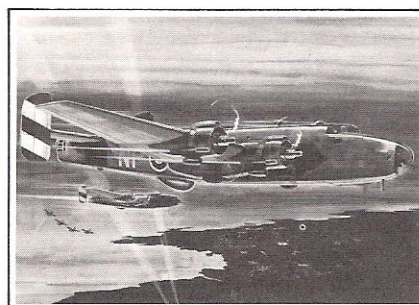
**DASSAULT MIRAGE IIIC** — French interceptor and ground attack aircraft. Speed to Mach 2.05. Wing span of 27 ft. Armed with guided missile, cannon, and rockets.

#9-49 ..... Retail: 49¢



**LOCKHEED HUDSON MK-1** — Maximum speed of 250 m.p.h. and range of 2,000 miles. Armed with 4 machine guns and bomb load of 1,400 lbs. Wright Cyclone engines.

#3-89 ..... Retail: 89¢



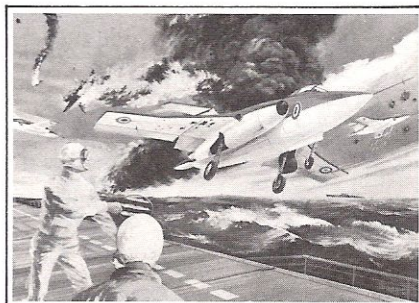
**HALIFAX** — Night bomber used extensively in World War II. It also played a leading part in the daylight offensive after D-Day. Top speed was 282 m.p.h.

#2-129 ..... Retail: \$1.29



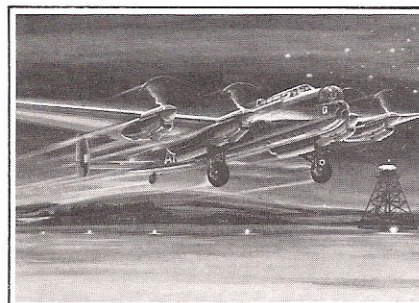
**ELECTRIC LIGHTNING F.1A** — One of world's best bomber-interceptors. Two Rolls Royce Avon 200 turbojets give speed of Mach 2.3. Armed with cannon and missiles.

#11-49 ..... Retail: 49¢



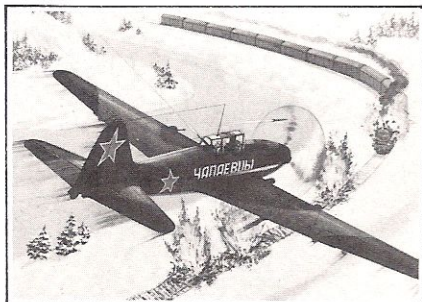
**BLACKBURN BUCCANEER NA 39** — Two seat, low level strike aircraft. Rotary bomb bay holds nuclear or conventional weapons. All performance figures are classified.

#4-89 ..... Retail: 89¢



**LANCASTER** — Most famous RAF bomber of World War II. Could carry greater bomb load than any other. 22,000 lb. "Blockbuster" could fit in its bomb bay. 287 m.p.h.

#3-129 ..... Retail: \$1.29



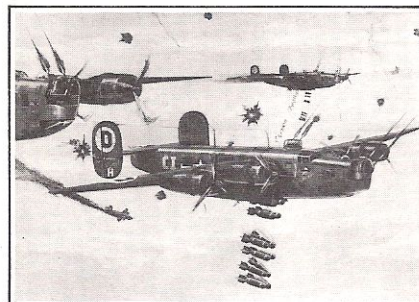
**IL-2 M.3 STURMOVIK** — Best known of Russian World War II planes. Carried two men at speed of 260 m.p.h. Carried 2 cannons, 3 machine guns, 1,000 lb. bomb load.

#12-49 ..... Retail: 49¢



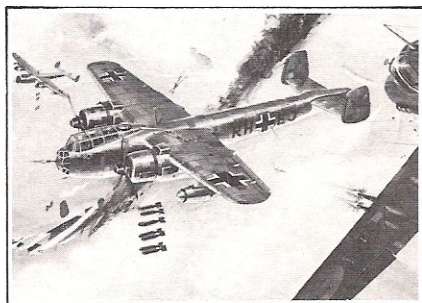
**VICKERS WELLINGTON** — First standard RAF night bomber. More Wellingtons were built than any other British bomber of World War II. Top speed was 263 m.p.h.

#1-98 ..... Retail: 98¢



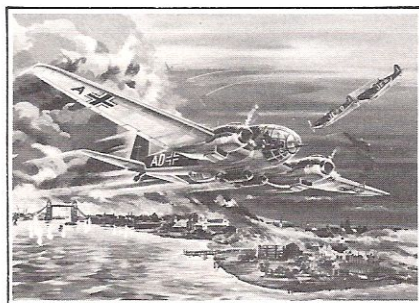
**B-24J LIBERATOR** — Four P&W 1,200 hp engines gave top speed of 300 m.p.h. and loaded range of 1,700 miles. Max. bomb load 12,800 lbs. Carried eight machine guns.

#4-129 ..... Retail: \$1.29



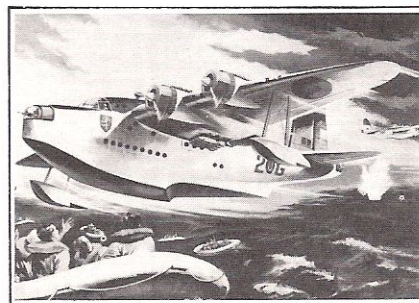
**DORNIER Do 217E-2** — One of best German bombers of World War II. Two 1,600 hp engines gave top speed of 304 m.p.h. and range of 1,500 miles. Bomb load: 4,400 lbs.

#2-89 ..... Retail: 89¢



**HEINKLE HE-111** — The bomber used by Germany in its offensive against England during the Battle of Britain. Top speed of the Heinkel was in excess of 250 m.p.h.

#3-98 ..... Retail: 98¢



**SHORT SUNDERLAND III** — One of most famous and popular RAF planes. Used in WW II, Berlin airlift, and Korea. Biggest Airfix plane: 19" wingspan, 14" fuselage.

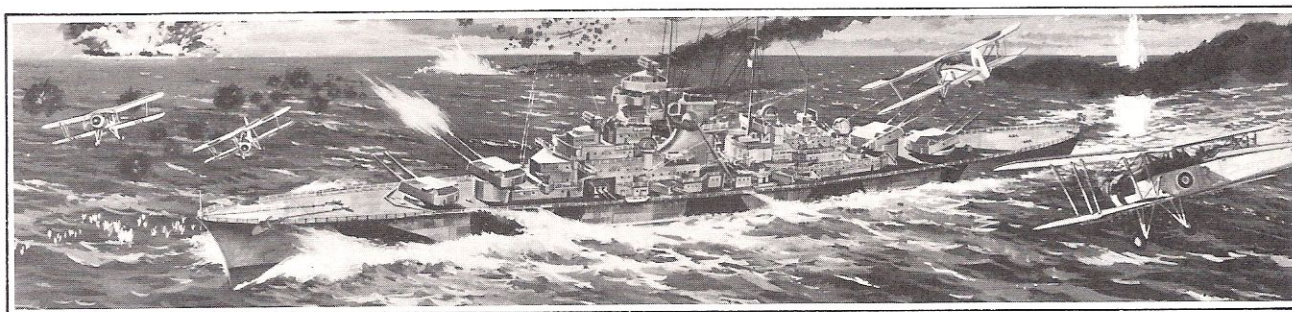
#1-198 ..... Retail: \$1.98



# TAKE COMMAND OF THE **AIRFIX NAVY** TASK FORCE 600

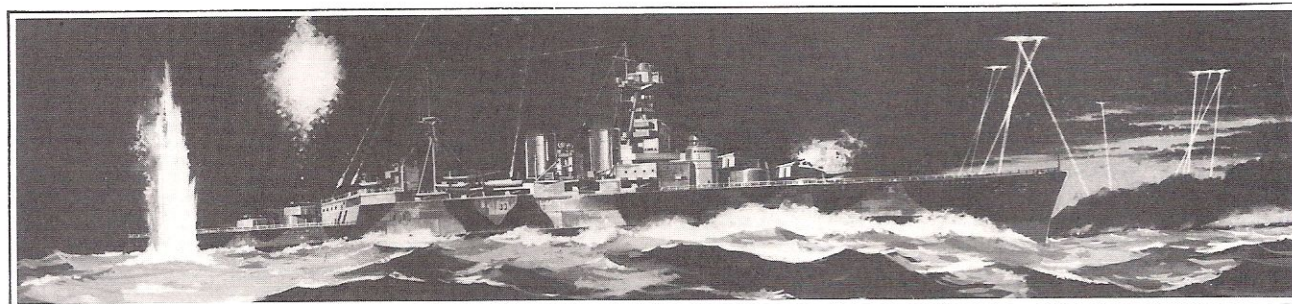
Off the coast of France in 1941, HMS Hood moved in on the German Battleship Bismarck, and one of the major naval battles in the European theater of war began. And you're right there in the smoke and screaming shells when you join the 1/600 constant

scale Airfix Navy. Or if it's the civilian ocean liners you go for, Airfix has the 1/600 kits you'll want to build . . . quality kits you'll be proud to display. And there's a stand in every kit to let you do just that. Join up, go navy . . . the Airfix Navy.



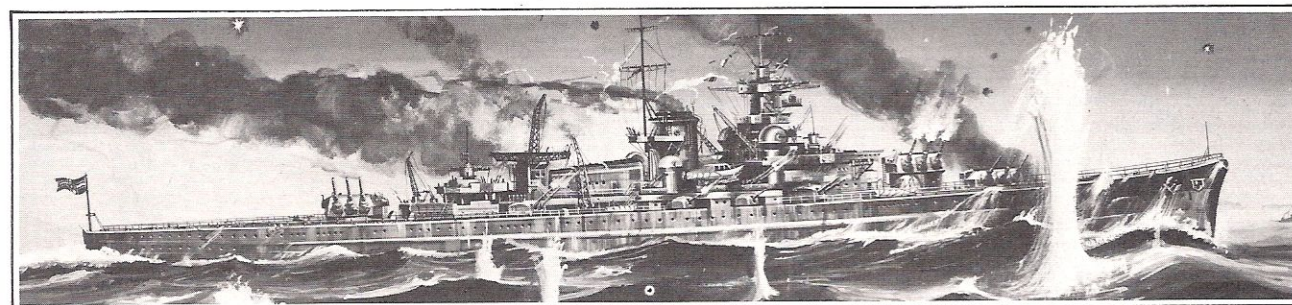
**THE BISMARCK** — German battleship laid down in 1936 and launched Feb. 14, 1939. On May 24, 1941 attacked by a squadron of British Swordfish torpedo planes, with at least one hit. On May 26 she was sighted by British destroyers led by HMS Cossack. Already on fire and drastically slowed, she was sunk. Only 110 survivors were recovered from the original crew of more than 2,000.

#S2-163 ..... Retail: \$1.63



**HMS HOOD** — Laid down in 1915 and launched Aug. 22, 1918 — too late to see WWI action. Made many goodwill and training cruises until refitting and rearming for WWII. In May of 1941 the Hood joined other ships and planes in attacking the German Battleship Bismarck. The 3rd and 5th salvos struck HMS Hood amidships, and she sunk within two minutes leaving but 3 survivors.

#S1-163 ..... Retail: \$1.63



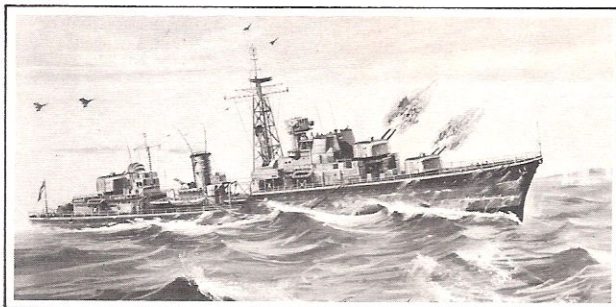
**THE SCHARNHORST** — German Battleship launched in 1936. Played important role in invasion of Norway during early WWII. Throughout 1942 and 1943, she was hunted down by British ships and planes, and was finally sunk by HMS Duke of York in December of 1943. She had 11-inch main batteries, and carried a crew of 1,461. She was 775 feet long and had a top speed of 30 knots.

#S3-129 ..... Retail: \$1.29



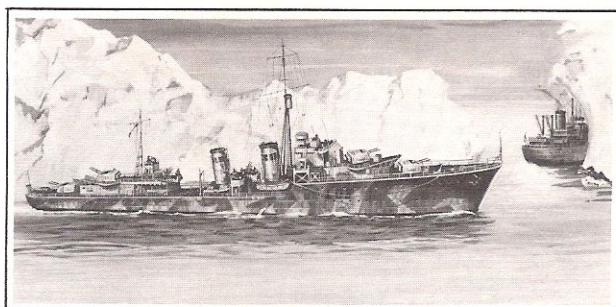


## Models Are Exact Replicas



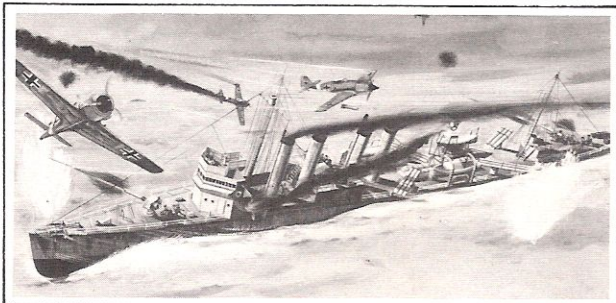
**HMS DARING** — Daring was 390 feet long, with a beam of 43 feet. She drew 17 feet. Armament consisted of 4.5" guns, 40mm guns, 21" torpedo tubes, and a depth charge mortar. She had a maximum speed of 30.5 knots.

#S1-39 ..... Retail: 39¢



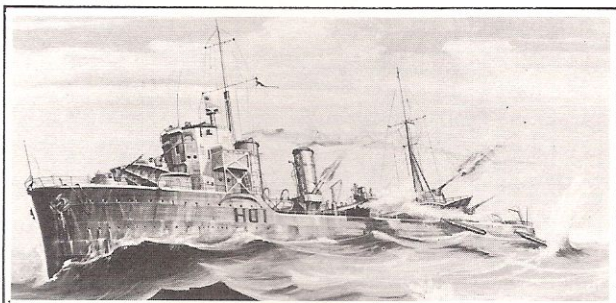
**HMS COSSACK** — One of 16 in famous "Tribal" class destroyers. Cossack was 379 feet overall and displaced 1,870 tons. She carried 4.7" guns, AA batteries, and 21" torpedo tubes. Maximum speed was 36.5 knots.

#S3-39 ..... Retail: 39¢



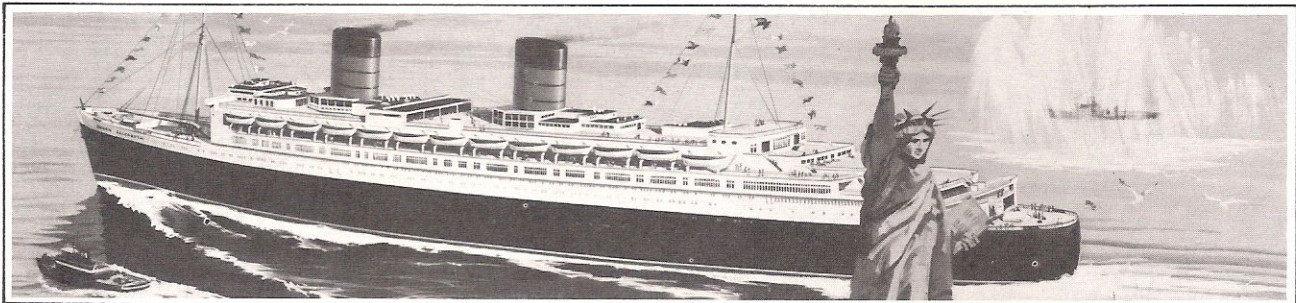
**HMS CAMPBELLTOWN** — Originally a U.S. Navy ship, Campbelltown was 314 feet long, with a beam of 31 feet. She drew 9 feet. Armament consisted of 4" guns, 3" AA battery, and triple 21" torpedo tubes. Normal complement was 102 men.

#S2-39 ..... Retail: 39¢



**HMS HOTSPUR** — Launched March 23, 1936, Hotspur was 323 feet overall, with a beam of 33 feet. Armament consisted of 4.7" main batteries, multiple machine guns, and 21" torpedo tubes. Her maximum speed was 36 knots.

#S4-39 ..... Retail: 39¢



**RMS QUEEN ELIZABETH** — The 83,673-ton Queen Elizabeth is the largest liner in the world. She is 1,031 feet in length, has 13 decks, and a Promenade Deck of 724 feet. Her officers and crew total 1,290, and she carries more than 2,000 passengers. There are two indoor swimming pools on the ship, in addition to three libraries, beauty parlors, children's playrooms and Turkish baths.

#S1-198 ..... Retail: \$1.98



**SS FRANCE** — The 66,000-ton France is the longest liner in the world, measuring 1,035 feet in length. Launched in 1962, she has a complement of 1,000, and carries 2,000 passengers on her 11 decks. Propulsion is by high pressure steam turbines driving four propellers at a service speed of 31 knots. The France makes the crossing from Southampton to New York in four and a half days.

#S2-198 ..... Retail: \$1.98



LEAD THE ATTACK WITH THE

# AIRFIX ARMY

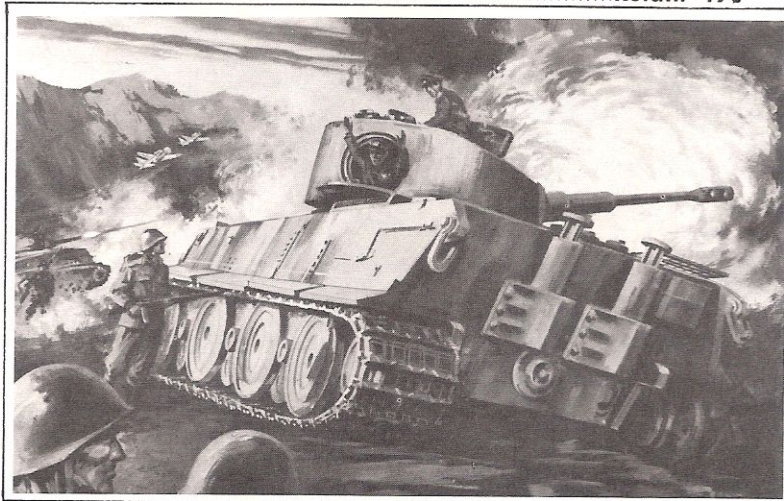
## ASSAULT GROUP 76

It's World War II. You're struggling with the Desert Fox at El Alamein . . . you're blazing the victory path across Western Europe . . . you're caught in the fierce see-saw battles at the eastern front. The Airfix Army puts you there with 1/76 constant scale Military

Vehicle Kits. Each model in ultra realism and in perfect proportion to the others. Simplified instructions make them easy to build . . . super-detail makes them satisfying to own. Sign up now at your favorite hobby shop or department and lead the attack.



**25-POUNDER FIELD GUN WITH QUAD LIMBER AND GUN CREW** — Standard equipment for British Army during World War II, it functioned as both gun and howitzer. The unit was towed by a Quad — a four-wheel drive tractor with excellent cross-country performance, which also provided seating room for the complete gun detachment.  
#M6-49 ..... Retail: 49¢



**MK VI TIGER I TANK** — A 56-ton heavy tank, the German Tiger was first used in Russia in 1942 and North Africa in 1943. Exceptionally wide tracks suited it for snow and soft terrain. It carried its 88 mm battery and two 7.92 mm machine guns at a maximum speed of 18 to 20 m.p.h.  
#M8-49 ..... Retail: 49¢





## Super Detail . . . Famous Vehicles



**PANZER 75mm ASSAULT GUN** — Used in fairly large numbers within Panzer and Infantry Divisions of the German Army. They differ from other self-propelled guns in that gun is mounted lower in hull, and frontal armor is much thicker.

#M1-49

Retail: 49¢



**JOSEF STALIN 3 TANK** — Appeared in 1945, and soon replaced earlier JS 1 and JS 2 tanks in Russian armored divisions. JS 3 tracks were over 2 feet wide, giving very light ground loading for operation over soft ground and snow.

#M2-49

Retail: 49¢



**Pz. Kw. V PANTHER TANK** — Designed in 1941 as the main equipment for German Armored Divisions. Until the Panther entered service in 1943, the Germans had no tank equal to the Russian T34 medium tanks on the Eastern Front.

#M3-49

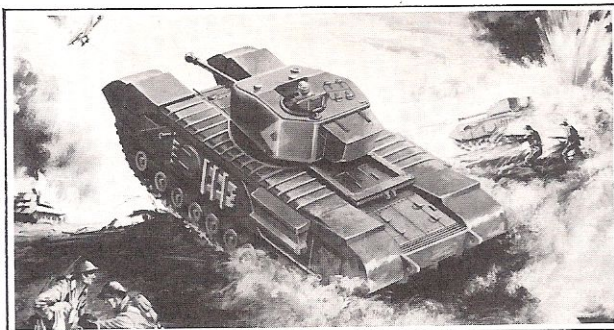
Retail: 49¢



**MK I SHERMAN TANK** — Best known of all American tanks, the Sherman was designed in 1941 as an improvement over the earlier Lee and Grant medium tanks. It embodied results of a careful study of tank warfare during early World War II.

#M4-49

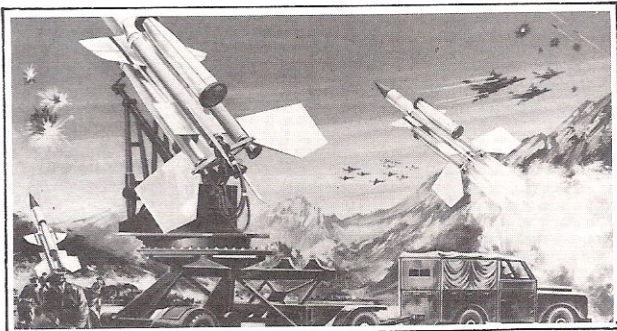
Retail: 49¢



**MK VII CHURCHILL TANK** — First of a long series of successful tanks designed for infantry cooperation and support. The Churchill was designed in 1941, with emphasis on good armor and heavy fire-power rather than high top speed.

#M5-49

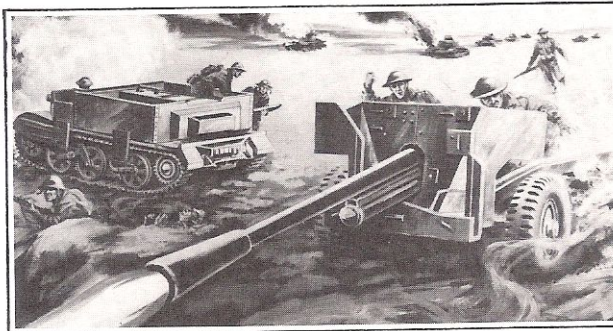
Retail: 49¢



**BRISTOL BLOODHOUND AND LAND ROVER** — Bloodhound is a surface-to-air guided missile system used by RAF. Kit contains the long-range homing missile, missile launcher, missile carrier, Land Rover, and six figures.

#M7-49

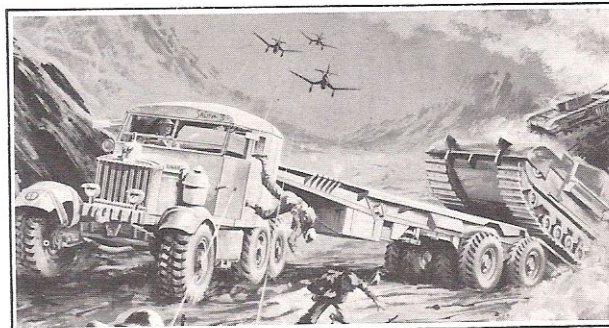
Retail: 49¢



**BREN GUN CARRIER WITH 6-POUNDER ANTI-TANK GUN** — The 6-Pounder was developed after experience with German Panzers, and proved extremely successful. The Bren Carrier provided rests for the Bren gun and Boys anti-tank rifle.

#M9-49

Retail: 49¢



**SCAMMELL 30-TON TANK TRANSPORTER** — Hundreds of these huge, powerful diesel tank transporters were supplied to the military during World War II. They were known to be among the most reliable of all military vehicles.

#M1-79

Retail: 79¢



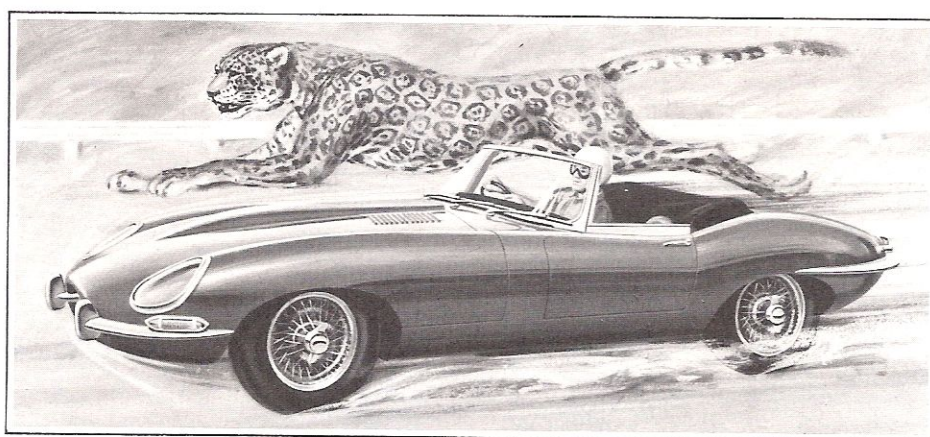
TAKE THE CHECKERED FLAG WITH

# AIRFIX AUTOMOBILES

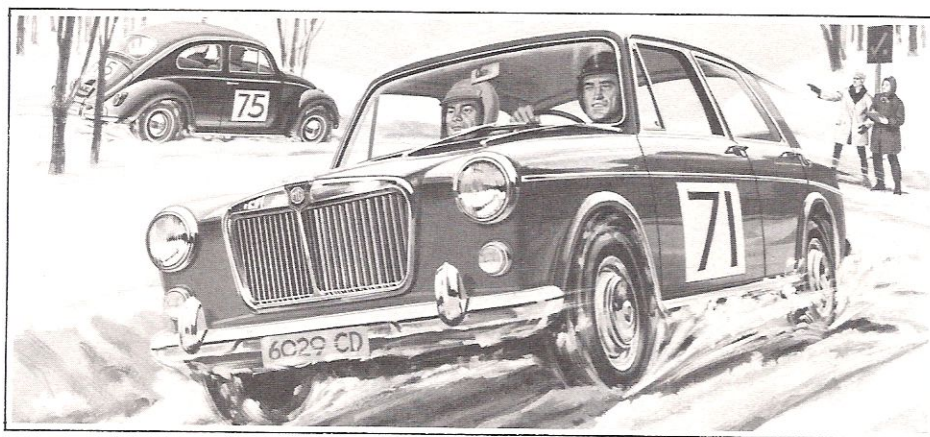
## RALLY TEAM 32

Here's the 1/32 constant scale car kit series you'll have to build to believe! Seven of the world's most famous race/rally performers . . . most of them never before offered here in kit form. And every Airfix car kit has chrome — and plenty of it! Fifty cents will never buy more building fun than with Airfix Rally Team 32 cars. Every model is super-

detailed in 1/32 constant scale, with all the extra quality you expect only from Airfix. And they're adaptable for slot racing, too! So whether you're a fan of the road races, oval competition, drags, or international rallies . . . here's your chance to build the best . . . for less! Get down to your favorite hobby shop or hobby department today.



**JAGUAR XK-E** — There is no more famous background than that of the Jaguar "E" type GT car. Its engine is the famous 3.8 litre twin overhead cam XK "S", with 3 carburetors. Acceleration and top speeds are spectacular, making the XK-E the favorite of outstanding racing drivers the world over.  
#C2-50 ..... Retail: 50¢



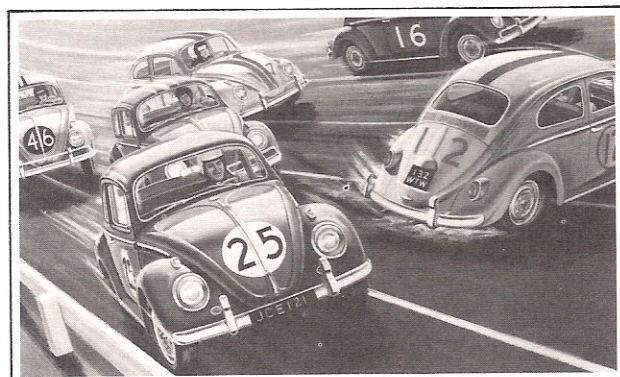
**MG 1100** — Front-wheel drive from the space-saving, transversely-mounted engine . . . plus a unique, fluid-smooth suspension. These two features give the MG 1100 the tight road-holding, stable cornering, and outstanding performance that makes it a top contender for rally honors whenever it runs.  
#C4-50 ..... Retail: 50¢



# **AIRFIX** ... 1/32 Constant Scale, Plus Chrome!



**FORD ZODIAC MK. III** — A 100 m.p.h. automobile with sports car performance, international styling, and touring luxury, the Zodiac is Ford of England's biggest and best. A four-speed synchromesh gearbox, disc brakes, and high-speed nylon tires make it an outstanding rally and race competitor.  
**#C3-50** ..... **Retail: 50¢**



**VOLKSWAGEN 1200** — With a top speed of 72 m.p.h. that is also its most efficient cruising speed, the VW is a fierce class competitor in road and oval racing as well as rallies. Produced at the rate of 3,600 a day for sale in 136 countries, it is one of the world's best known and most popular automobiles.  
**#C1-50** ..... **Retail: 50¢**



**RENAULT DAUPHINE** — Outstanding aerodynamics, top road-holding characteristics, and superior power-to-weight ratio have made the Dauphine a consistent class winner in top European rallies. With these features, it quickly became the first European car to sell more than one million units annually.  
**#C6-50** ..... **Retail: 50¢**



**AUSTIN-COOPER** — It's no wonder performance enthusiasts around the world know the Austin-Cooper as "Wizardry on Wheels". Revolutionary in concept, it is a mere 10 feet long — and only 2 feet of this is taken up by engine, gearbox, and transmission! Stock or modified, it's famous as a top competitor.  
**#C5-50** ..... **Retail: 50¢**



**SUNBEAM RAPIER** — The Sunbeam name shines brilliantly through more than 50 years of automobile racing. And the Rapier's victories in leading international rallies — Monte Carlo, Ireland, Monaco — testify to the superior performance, quality, reliability, and endurance of this popular machine.  
**#C7-50** ..... **Retail: 50¢**

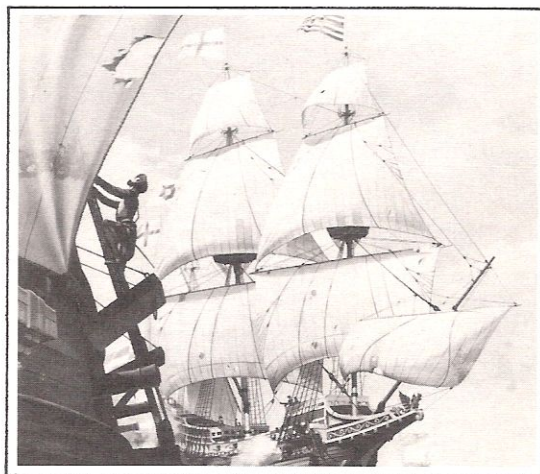


SAIL THE SEVEN SEAS WITH

# AIRFIX CLASSIC SHIPS

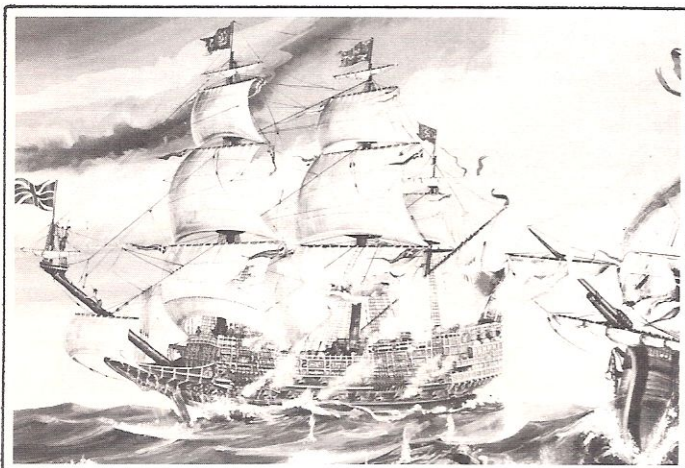
You glide out of the Thames and into the Channel, raise full sails, and head for the high seas. You're Captain of the British Man-O-War, Royal Sovereign—superb Classic Ship from Airfix. The Royal Sovereign, Revenge and Endeavor are majestic scale model kits with every original detail built in. As finished

models, they're masterpieces, ready to decorate the fireplace or showcase. Realistic and precise, Airfix Classic Ships are easy to build because of easy-to-follow instructions. You'll have fun building (and pleasure in showing) them! See Classic Ships at your favorite hobby shop or hobby department.



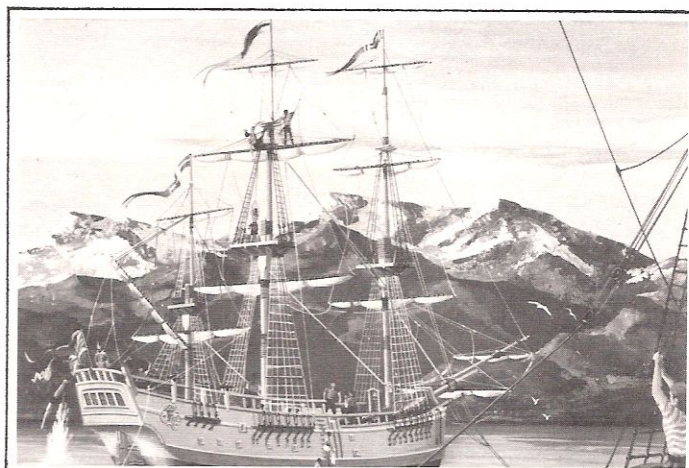
**THE REVENGE**—Launched in 1577, the Revenge found full glory under the command of Sir Francis Drake. The ability of the Revenge and ships of its class to maneuver quickly was important in overcoming the vast numerical superiority of the Spanish fleet. The ship was 92 feet long in the keel and 32 feet in breadth. It was a four masted rig and carried 16 guns.

#1-366.....Retail: \$3.66



**ROYAL SOVEREIGN** — One of the most important ships of British naval history. Launched in 1637, she was the largest and most powerful ship of her time. 124 feet in length, she had a beam width of 46 feet and drew 22 feet. She carried 100 guns. Though she saw service in 4 wars, she was destroyed by an accidental fire.

#S1-398.....Retail: \$3.98



**ENDEAVOR**—Famous as the ship in which English explorer Captain Cook made the first of his voyages of discovery. She was armed with 12 swivel and 10 carriage guns, and carried a crew of 71, plus 12 marines, 11 passengers, and a number of scientists. Launched in 1768, the Endeavor had huge storage for her long voyages.

#S1-298.....Retail: \$2.98



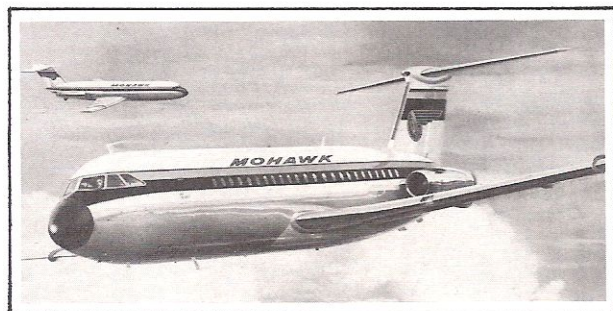
# GO AROUND THE WORLD IN 80 HOURS WITH THE

# **AIRFIX** AIRLINES

## COMMERCIAL FLIGHT 144

The passengers fasten their belts, you finish checking your controls, the tower gives you the go-ahead, and you're underway, speeding down the runway and then . . . powering your jet into the sky and out over the ocean. The world is yours when you take over the

Airfix Airlines. Here are magnificent kits . . . all in 1/144 constant scale . . . all exact replicas of the original commercial planes . . . all easy to build and with display stands for showcase mounting. And they're all at your favorite hobby shop or department now.



**BAC 111**—Called the world's first short-haul jetliner, the BAC 111 operates at speeds of 555 m.p.h. with a payload range of 1,070 miles. It has a wing span of 88 ft., six in., and is 92 ft., six in., long. It can carry up to 79 passengers.

#1-88 (Mohawk) . . . . . Retail: 88¢  
#2-88 (Braniff) . . . . . Retail: 88¢



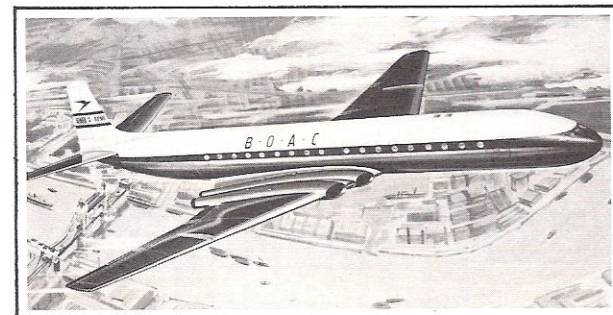
**CARAVELLE**—The Caravelle is powered by two Rolls-Royce Avon Turbojets, each of 11,000 lb. thrust. Maximum speed is over 500 m.p.h.; range is 1,500 miles. The Caravelle is considered one of the most successful of present short/medium jet airliners.

#1-79 . . . . . Retail: 79¢



**VICKERS VANGUARD**—The Vanguard is able to carry 139 passengers and still operate from small airfields. It is powered by four Rolls-Royce Tyne jet-prop engines, each of 5,000 hp. Cruising speed is 425 m.p.h. Wing span is 118 ft., and length 122 ft.

#4-98 . . . . . Retail: 98¢



**DEHAVILLAND COMET 4B**—The Comet 4B is powered by four Rolls-Royce Avon 525B turbojets, each of 10,500 lb. thrust. Cruising speed is approximately 530 m.p.h.; maximum range fully loaded is 2,240 miles. Wing span is 107 feet, and length 118 feet.

#5-89 . . . . . Retail: 89¢



**BOEING 707**—Air Force One is the designation given to the official plane of the President of the United States. The Boeing 707 is powered by four jet engines of 17,500 lbs. thrust each. Maximum speed is approximately 600 m.p.h. Wing span: 142 ft., 5 in.

#5-129 . . . . . Retail: \$1.29



# BETTA BILDA

*Educational hobby bricks from*

**AIRFIX**



NEW FROM AIRFIX . . . the building game, the fun game, the educational game. Now you can build houses, bridges, animals, planes . . . whatever sparks your imagination! Here's hours of put-together and take-apart fun for everybody. More parts for the beginning builder . . . more challenge for the advanced builder . . . more variety for the creative builder. And what's more, Betta Bilda grows as your interest grows, because Airfix offers a wide variety of low-cost accessories. Betta Bilda is captivating . . . challenging. Try it and see for yourself!

**MORE PARTS . . . MORE BUILDING FUN . . . FOR LESS**

**SET #1**

**OVER  
275  
PIECES**

**\$1<sup>98</sup>**

**SET #2**

**OVER  
610  
PIECES**

**\$4<sup>98</sup>**

**SET #3**

**OVER  
1000  
PIECES**

**\$6<sup>98</sup>**

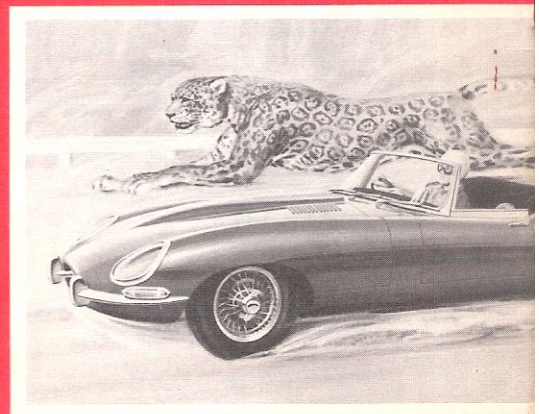
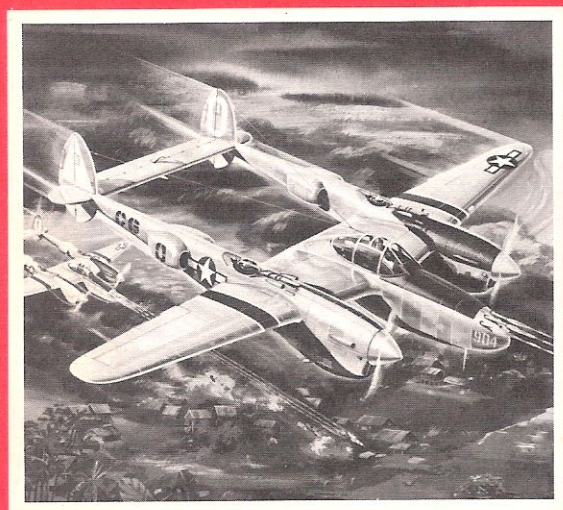




**AIRFIX**

CRAFT MASTER CORPORATION

126 Groesbeck Highway, Mt. Clemens, Michigan.





## CHECK SHEET - ORDER BLANK



126 GROSBECK HIGHWAY, MT. CLEMENS, MICHIGAN  
AREA CODE 313 • TELEPHONE: 293-7200

CODE \_\_\_\_\_  
TERR. \_\_\_\_\_ CLASS \_\_\_\_\_

Credit OK by \_\_\_\_\_

Order No. \_\_\_\_\_

Date \_\_\_\_\_

Cust. Order No. \_\_\_\_\_

Ship When: \_\_\_\_\_

BILL TO: \_\_\_\_\_

SHIP TO: \_\_\_\_\_

Order	No.	29¢ Airplanes	Pk	Wt.	Retail	Ext.
	1-29	Fokker Triplane	36	5	.29	
	2-29	Sopwith Camel	36	5	.29	
	3-29	Albatross Scout	36	5	.29	
	4-29	Tiger Moth	36	5	.29	
	1000A	Assortment	36	5	.29	
Order	No.	39¢ Airplanes	Pk	Wt.	Retail	Ext.
	1-39	P-51 Mustang	36	5	.39	
	2-39	Stuka	36	5	.39	
	4-39	ME-109	36	5	.39	
	5-39	Zero	36	5	.39	
	7-39	Bristol Fighter	36	5	.39	
	8-39	RE-8	36	5	.39	
	9-39	Harvard SNJ	36	5	.39	
	10-39	Hawker Typhoon	36	5	.39	
	11-39	ME-262	36	5	.39	
	12-39	MIG-15	36	5	.39	
	1100A	Assortment	36	5	.39	
Order	No.	46¢ Airplanes	Pk	Wt.	Retail	Ext.
	1-46	Corsair	36	7	.46	
	2-46	P-40	36	6	.46	
	3-46	Wildcat	36	6	.46	
	4-46	Yak-9	36	6	.46	
	1299A	Assortment	36	6	.46	
Order	No.	49¢ Airplanes	Pk	Wt.	Retail	Ext.
	1-49	Mosquito	36	8	.49	
	2-49	P-38	36	8	.49	
	3-49	Swordfish	36	8	.49	
	4-49	ME-110	36	8	.49	
	5-49	Walrus	36	8	.49	
	6-49	Anson	36	8	.49	
	7-49	Beaufighter	36	8	.49	
	8-49	Hawker Hunter	36	8	.49	
	9-49	Mirage	36	8	.49	
	10-49	Starfighter	36	8	.49	
	11-49	English Electric	36	8	.49	
	12-49	Stormovik	36	8	.49	

Order	No.	50¢ Airplanes	Pk	Wt.	Retail	Ext.
	1222	Spitfire	36	8	.50	
	1223	Focke Wulf	36	8	.50	
	1224	Hawker Hurricane	36	8	.50	
	1225	P-39 Airacobra	36	8	.50	
	1200A	Assortment	36	8	.50	
Order	No.	70¢ Airplanes	Pk	Wt.	Retail	Ext.
	1301	TBM-3 Avenger	36	8	.70	
	1302	Mitsubishi Dinah	36	8	.70	
	1303	Aichi Val	36	8	.70	
	1304	Vertol	36	8	.70	
	1300A	Assortment	36	8	.70	
Order	No.	79¢ Airplanes	Pk	Wt.	Retail	Ext.
	1-79	Caravelle	24	6	.79	
Order	No.	88¢ Airplanes	Pk	Wt.	Retail	Ext.
	1-88	Braniff One-11	24	5	.88	
	2-88	Mohawk 111	24	5	.88	
Order	No.	89¢ Airplanes	Pk	Wt.	Retail	Ext.
	1-89	Boston	24	8	.89	
	2-89	Dornier 217E.2	24	9	.89	
	3-89	Hudson	24	8	.89	
	4-89	NA-39	24	8	.89	
	5-89	Comet	24	6	.89	
	8900A	Assortment	24	6	.89	
Order	No.	98¢ Airplanes	Pk	Wt.	Retail	Ext.
	1-98	Wellington	24	12	.98	
	2-98	DC-3	24	12	.98	
	3-98	Heinkle HE-111	24	12	.98	
	4-98	Vanguard	24	7	.98	
Order	No.	\$1.00 Airplanes	Pk	Wt.	Retail	Ext.
	1413	Phantom	24	7	1.00	
	1-109	Junker JU-88	24	10	1.00	
	2-109	B-25 Mitchell	24	10	1.00	
	1400A	Assortment	24	10	1.00	



Order	No.	\$1.29 Airplanes	Pk	Wt.	Retail	Ext.
	2-129	Halifax	24	16	1.29	
	3-129	Lancaster	24	16	1.29	
	4-129	B-24	24	16	1.29	
	5-129	Air Force #1	24	10	1.29	
Order	No.	\$1.50 Airplanes	Pk	Wt.	Retail	Ext.
	1-163	PBY5A Catalina	12	9	1.50	
	2-163	B-17	12	9	1.50	
	3-163	Junkers JU-52	12	9	1.50	
Order	No.	\$1.98 Airplanes	Pk	Wt.	Retail	Ext.
	1-198	Sunderland	12	12	1.98	
	1601	B-29 Super Fortress	12	12	2.00	
Order	No.	39¢ Ships	Pk	Wt.	Retail	Ext.
	S1-39	Daring	36	6	.39	
	S2-39	Campbeltown	36	5	.39	
	S3-39	Cossack	36	5	.39	
	S4-39	Hotspur	36	5	.39	
	1700A	Assortment	36	5	.39	
Order	No.	\$1.29 Ships	Pk	Wt.	Retail	Ext.
	S3-129	Scharnhorst	12	7	1.29	
Order	No.	\$1.50 Ships	Pk	Wt.	Retail	Ext.
	S1-163	Hood	12	8	1.50	
	S2-163	Bismarck	12	9	1.50	
	1804	Victorious	12	9	1.50	
Order	No.	\$1.98 Ships	Pk	Wt.	Retail	Ext.
	S1-198	Queen Eliz.	12	10	1.98	
	S2-198	S. S. France	12	10	1.98	
Order	No.	\$2.98 Ships	Pk	Wt.	Retail	Ext.
	S1-298	Endeavor	12	12	2.98	
Order	No.	\$3.50 Ships	Pk	Wt.	Retail	Ext.
	1-366	Revenge	12	14	3.50	

Order	No.	\$3.98 Ships	Pk	Wt.	Retail	Ext.
	S1-398	Royal Sovereign	12	17	3.98	
	1909	Victory	12	17	4.00	
Order	No.	49¢ Tanks	Pk	Wt.	Retail	Ext.
	M1-49	Assault Gun	36	5	.49	
	M2-49	Stalin	36	5	.49	
	M3-49	Panther	36	5	.49	
	M4-49	Sherman	36	5	.49	
	M5-49	Churchill	36	5	.49	
	M6-49	25 Lb. Field Gun	36	5	.49	
	M7-49	Bloodhound	36	5	.49	
	M8-49	Tiger	36	5	.49	
	M9-49	Bren Gun Carrier	36	5	.49	
	2000A	Assortment	36	5	.49	
Order	No.	79¢ Military	Pk	Wt.	Retail	Ext.
	M1-79	Tank Transporter	36	8	.79	
Order	No.	50¢ Cars	Pk	Wt.	Retail	Ext.
	C1-50	Volkswagen	36	7	.50	
	C2-50	Jaguar XK-E	36	7	.50	
	C3-50	Ford Zodiac	36	9	.50	
	C4-50	MG-1100	36	8	.50	
	C5-50	Austin Cooper	36	7	.50	
	C6-50	Renault Dauphine	36	8	.50	
	C7-50	Sunbeam Rapier	36	8	.50	
	2100A	Assortment	36	8	.50	
Order	No.	Pic-A-Pac	Pk	Wt.	Retail	Ext.
	1199	4-39¢ Planes	9	7	1.50	
	1298	2-50¢ Planes	18	9	1.00	
	1299	4-50¢ Planes	9	9	2.00	
	1396	2-70¢ Planes	18	9	1.40	
Order	No.	Aston Martin	Pk	Wt.	Retail	Ext.
	.007	Aston Martin	12	10	2.00	