

GET *Busy* LIVING



"People told us we were too young to move here, but we absolutely love it."

*Carol Simpson, Resident*

Seabury has collaborated with a top architectural firm on major development plans, including 68 new independent living residences as well as a salon, bistro, day spa and other luxury amenities.

If you'd like to learn more, information sessions are held at Seabury every 1st Thursday at 1:30 p.m. and every 3rd Wednesday at 10:30 a.m.

Call (860) 243-6081 or (860) 243-4033 for reservations or e-mail [info@seaburylife.org](mailto:info@seaburylife.org)

  
**Seabury**  
An Active Life Plan Community

200 Seabury Drive | Bloomfield, CT 06002-2650  
(860) 286-0243 | (800) 340-4709  
[www.seaburylife.org](http://www.seaburylife.org) | [info@seaburylife.org](mailto:info@seaburylife.org)

**BEST OF**  
**Hartford**  
MAGAZINE  
2009  
2010  
2011  
2012  
2013  
2014  
2015



International  
Council on  
Active Aging

A Proud Member of  
**CAPA**



# Refreshment For Your Rugs



**J.Namnoun Oriental Rug Gallery**

**Sales • Cleaning • Restoration**

92 Weston Street. Hartford CT. 06120

(860) 522-6368

[www.jnamnoun.com](http://www.jnamnoun.com)





# Your Front Row Seat To Everything.

Discover the perfect harmony that comes with living at Duncaster. You'll hear a chorus of praise for the vibrant and energized lifestyle with unparalleled cultural arts programs and exceptional amenities. Experience peace of mind with maintenance-free apartment homes and enjoy the security that comes with a full continuum of on-site health care. *Life at Duncaster is your front row seat to everything.*

Call [860-380-5006](tel:860-380-5006) to schedule  
your complimentary lunch and tour.



## Duncaster

Boutique Community Living



40 Loeffler Road, Bloomfield, CT • [www.Duncaster.org](http://www.Duncaster.org)



Dear Friends,

I am delighted to welcome you to the World Premiere of *Anastasia* by Terrence McNally, Stephen Flaherty and Lynn Ahrens. This production is an ambitious undertaking that has required much more than 100% from our staff to realize the extraordinary vision of Darko and his collaborators. I am grateful to all of them for their talent, dedication, creativity and resourcefulness, demonstrating the greatest commitment to excellence one could hope to encounter at any theatre. *Anastasia* caps off a season that has delighted and entertained close to 100,000 audience members from the Greater Hartford area and beyond. I am grateful to all of you—our loyal subscribers especially—for your generous support and enthusiastic endorsement of the work we do here. As we conclude the 2015-16 season, I am pleased to let you know that over 10,000 students attended the theatre this season, individual ticket buyers are projected to increase by 18%, and our subscriber base increased to over 8,000 for the first time in over a decade.

Hartford Stage is producing *Anastasia* in collaboration with Stage Entertainment USA and Tom Kirdahy Productions. We are deeply grateful to Bill Taylor, Eric Cornell and Tom Kirdahy, as well as to Terrence, Stephen and Lynn, for giving us the opportunity to help develop this show and share it with our Hartford audiences first. We are also pleased to have had the opportunity to work with colleagues Tamar Climan, David Richards and Joe Christopher from Richards/Climan, Inc. and Ryan Murphy from Aurora Productions on this show, and *Rear Window* earlier in the season.

I would like to thank the John and Kelly Hartman Foundation for providing a generous grant to help fund this project, as well as the Cheryl Chase and Stuart Bear Family Foundation, the Saunders Foundation, the Katherine K. McLane and Henry R. McLane Charitable Trust, Susan R. Block, the National Endowment for the Arts, and the Radisson Hotel, all of whom provided additional financial or in-kind support.

When we talk about the “economic impact” of the arts in our communities, I can think of no better example than *Anastasia*, and in fact our entire 2015-16 season, which has made a significant impact on the local economy—upwards of \$25 million in direct and indirect spending this year. As the City of Hartford and State of Connecticut wrestle with significant budget challenges, I truly hope that our decision makers are mindful of what our vibrant arts community collectively contributes to our economic—as well as cultural, emotional and intellectual—landscape.

Thank you for your continued support. I look forward to seeing you at the theatre!



Michael Stotts  
Managing Director

**We are proud  
to sponsor  
Hartford Stage's  
production of  
*Anastasia!***

**Radisson®**

**Radisson Hotel Hartford**

[www.radisson.com/hartfordct](http://www.radisson.com/hartfordct) • 50 Morgan St, Hartford • 860-549-2400



“It’s a privilege to be able to develop my craft at UConn, an institution, which, with the help of Bob McDonald’s generous scholarship, provides the unique opportunity to work with London’s finest theatre artists. It really is a dream come true!”

— Sarah Jensen '17,  
UConn School of Fine Arts  
Hometown: Willington, CT

We envision a future where every student admitted to UConn will be able to attend regardless of financial circumstances.

**You have  
the power to  
transform lives.**

Unleash Opportunities.  
Support Scholarships.  
Transform Lives.

**UConn** | FOUNDATION

[transformlives.uconn.edu](http://transformlives.uconn.edu)

DARKO TRESNJAK  
Artistic Director

MICHAEL STOTTS  
Managing Director



## HARTFORD STAGE

PRESENTS

# ANASTASIA

A NEW MUSICAL

Book by **TERRENCE McNALLY**

Music by **STEPHEN FLAHERTY**

Lyrics by **LYNN AHRENS**

INSPIRED BY THE TWENTIETH CENTURY FOX MOTION PICTURES

Scenic Design  
**ALEXANDER DODGE**

Sound Design  
**PETER HYLENSKI**

Music Director  
**THOMAS MURRAY**

Music Preparation  
**JOANN KANE MUSIC**  
Russell Bartmus & Mark Graham

Vocal Arranger  
**STEPHEN FLAHERTY**

Dramaturg  
**ELIZABETH WILLIAMSON**

Assistant Stage Manager  
**KELLY HARDY\***

Costume Design  
**LINDA CHO**

Video & Projection Design  
**AARON RHYNE**

Orchestrator  
**DOUG BESTERMAN**

Fight Choreographer  
**JEFF BARRY**

Dance Music Arranger  
**DAVID CHASE**

Production Stage Manager  
**BONNIE PANSON\***

Production Manager  
**BRYAN T. HOLCOMBE**

Lighting Design  
**DONALD HOLDER**

Wig & Hair Design  
**CHARLES G. LAPOINTE**

Vocal & Text Coach  
**CLAUDIA HILL-SPARKS**

Casting  
**TELSEY + COMPANY**  
Craig Burns, CSA

Associate Music Director  
**STEVEN MALONE**

Stage Manager  
**TREY JOHNSON\***  
Associate Artistic Director  
**ELIZABETH WILLIAMSON**

Choreography by **PEGGY HICKEY**

Directed by **DARKO TRESNJAK**

Special thanks to Stage Entertainment USA and Tom Kirdahy Productions.

#### PRESENTING SPONSOR

**The John and Kelly  
Hartman Foundation**

Anastasia is supported by  
the National Endowment for  
the Arts ArtWorks program.



#### PRINCIPAL SPONSOR



#### PRODUCTION SPONSORS

The Cheryl Chase & Stuart Bear  
Family Foundation  
The Saunders Foundation  
The Katharine K. McLane & Henry R.  
McLane Charitable Trust

PRODUCTION SUPPORT PROVIDED BY  
Susan R. Block

MAY 12 - JUNE 19, 2016

# Welcome & Enjoy the Show!



## **Please turn off your cellphones before the show.**



For your eating and drinking pleasure, snacks, soda, wine, beer, and mixed drinks are available at our concessions bar on both levels.



You are welcome to bring drinks with you to your seat, but please **NO DRINKS WITH ICE**. The servers at concessions will be happy to remove ice from your drinks if you do not finish before it is time to go into the theatre.



Photography or video recording of any kind is prohibited without prior written permission.



Accessible seating for patrons with mobility requirements available in the front row of sections B & F.



Parking vouchers are for sale at the box office for \$6.50 prior to the show. Choose the MAT Garage, adjacent to Hartford Stage or the Church Street garage, located below the Hilton Hotel. Vouchers are valid on performance days only.

## **HARTFORD STAGE ASSISTED LISTENING DEVICE**

If you are using a Hartford Stage Listening Device, please remove your own personal hearing aid or make sure you turn it off if you leave it in your ear. If you remove the Hartford Stage device from your head, please make sure the volume is turned off on the device. Taking these steps will reduce the amount of static feedback from the listening system.

## **SPONSOR PROFILE**

At Radisson, we apply Extra Thoughtful Care to every stay and every guest. That approach is deeply engrained in our service culture and in our commitment to connecting with our local communities. Our caring spirit drives the way we do business and is at the core of everything we do.

Radisson Hotel Hartford has had a long-standing partnership with the Hartford community. We are committed to being a good neighbor—giving back to our city and helping it grow through our support of such organizations as the Hartford Foundation for Public Giving, the Boys & Girls Clubs of Hartford, and the Hartford Yard Goats. We believe the

arts are essential to a vibrant city and recognize Hartford Stage as a vital member of our community. We are proud to support Hartford Stage and to be a Principal Sponsor of *Anastasia*.





## THE CAST (IN ORDER OF APPEARANCE)

Anastasia, age 6 .....	Nicole Scimeca *
Dowager Empress Maria Feodorovna.....	Mary Beth Peil *
Tsarina Alexandra .....	Lauren Blackman *
Tsar Nicholas II .....	Constantine Germanacos *
Anastasia, age 17 .....	Molly Rushing *
Maria Romanov .....	Alida Michal *
Olga Romanov .....	Samantha Sturm *
Tatiana Romanov .....	Shina Ann Morris *
Prince Alexei Romanov .....	Nicole Scimeca *
Gleb .....	Manoel Felciano *
Dmitry .....	Derek Klena *
Vlad Popov .....	John Bolton *
Anya .....	Christy Altomare *
Anna .....	Molly Rushing *
Marfa .....	Alida Michal *
Tatyana .....	Shina Ann Morris *
Count Ipolitov .....	Constantine Germanacos *
Gorlinsky .....	Ken Krugman *
Josephine Baker .....	Shina Ann Morris *
Pablo Picasso .....	Ken Krugman *
Isadora Duncan .....	Lauren Blackman *
Ernest Hemingway .....	Kevin Ligon *
Django Reinhardt .....	Johnny Stellard *
Gertrude Stein .....	Rayanne Gonzales *
Coco Chanel .....	Janet Dickinson *
Countess Lily Malevsky-Malevitch.....	Caroline O'Connor *
Count Leopold .....	Kevin Ligon *
Russian Doorman .....	Kevin Munhall *
Odette in <i>Swan Lake</i> .....	Alida Michal *
Prince Siegfried in <i>Swan Lake</i> .....	Max Clayton *
Von Rothbart in <i>Swan Lake</i> .....	Johnny Stellard *
Hotel Manager .....	James Brown III *
Suitors, Soldiers, Comrades, Couturiers, Ghosts, Parisians, White Russians, Waiters, Reporters, Cygnets in <i>Swan Lake</i> .....	
	<b>Lauren Blackman*, James Brown III*, Max Clayton*, Janet Dickinson *</b>
	<b>Constantine Germanacos*, Rayanne Gonzales*, Ken Krugman *</b>
	<b>Kevin Ligon*, Alida Michal*, Shina Ann Morris*, Kevin Munhall *</b>
	<b>Molly Rushing*, Johnny Stellard*, Samantha Sturm *</b>

\* Members of Actors' Equity Association, the Union of Professional Actors and Stage Managers in the United States.



The Scenic, Costume, Lighting and Sound Designers in LORT theatres are represented by United Scenic Artists Local USA-829, IATSE.



The Director is a member of the Stage Directors and Choreographers Society, a national theatrical labor union.

Artists subject to change.

ADDITIONAL SUPPORT FOR  
HARTFORD STAGE PROVIDED BY

**Connecticut**  
still revolutionary

**HARTFORD**  
★ HAS IT

  
greater hartford  
arts council



MEDIA SPONSOR

**Hartford Courant**

**YOU  
TEXT.  
WE  
DRIVE.**



Learn how  
CTfastrak can  
take you to  
the show.

 **CTfastrak.com**  
*Transit at the speed of life*

The Cheryl Chase  
& Stuart Bear  
Family Foundation

Proud Sponsor of  
Hartford Stage's  
Production of

**ANASTASIA**  
A NEW MUSICAL

THE HARTFORD ART SCHOOL'S  
**JOSELOFF GALLERY**  
AT THE UNIVERSITY OF HARTFORD

**CONTEMPORARY  
ART** at the

University of  
Hartford's

**HARTFORD ART  
SCHOOL**

JOSELOFF GALLERY HOURS:  
Tuesday-Friday: 11 a.m.-4 p.m.  
Saturday & Sunday: 12-4 p.m.

**UNIVERSITY OF HARTFORD**  
HARTFORD ART SCHOOL

200 Bloomfield Avenue West Hartford, CT 06117  
860.768.4090 [joseloffgallery.org](http://joseloffgallery.org)  
Instagram and Twitter: @joseloffgallery  
Facebook: /JoseloffGallery

Assistant Directors .....	<b>James McBride</b> <b>Sam French</b>
Associate Choreographer.....	<b>Adam Cates</b>
Associate Scenic Designer .....	<b>Colin McGurk</b>
Associate Costume Designer .....	<b>Ricky Lurie</b>
Assistant Costume Designer.....	<b>Brynn Almli</b>
Make-Up Design.....	<b>Joe Dulude II</b>
Associate Lighting Designer.....	<b>Vivien Leone</b>
Assistant Lighting Designer .....	<b>Margaret Peebles</b>
Lighting Programmer.....	<b>Scott Tusing</b>
Assistant Sound Designer.....	<b>Justin Stasiw</b>
Associate Video and Projection Design.....	<b>Bart Cortright</b>
Lead Video and Projection Animator.....	<b>Gabe Aronson</b>
Video Programmer .....	<b>Matthew Mellinger</b>
Assistant Video and Projection Design .....	<b>Nick Graci</b>
Assistant Dramaturg.....	<b>Fiona Kyle</b>
Script Assistant.....	<b>Emily Maltby</b>
Rehearsal Pianist.....	<b>Gary Chapman</b>
Music Assistant.....	<b>Kevin Velez</b>
Dance Captain.....	<b>Johnny Steward *</b>
Production Assistant .....	<b>Chandalae Nyswonger</b>
Supporting Production Assistant.....	<b>Katy Persutti</b>
Hartt School Music Interns.....	<b>Billy Bivona, Charlie Savage, Ben Stayner</b>

*Understudies never substitute for listed actors unless a specific announcement is made at the time of the performance.* Understudy for Anastasi, age 6, Prince Alexei Romanov: **Riley Briggs**; for Dowager

Empress: **Janet Dickinson\***; for Gleb: **Kevin Munhall\***; for Dmitry: **Max Clayton\***; for Vlad Popov: **Kevin Ligon\***; for Anya: **Molly Rushing\***; for Countess Lily Malevsky-Malevitch: **Rayanne Gonzales\***; for Male Ensemble: **Maxwell Carmel**; for Female Ensemble: **Katherine McLellan**.

## The following companies have provided additional production elements for *Anastasia*:

Scenic elements built, painted and electrified by Show Motion, Inc. Milford, Connecticut  
Automation and show control by Show Motion, Inc. Milford, Connecticut  
using the AC<sup>3</sup> Computerized Motion Control System  
Lighting Equipment From PRG Lighting  
Sound Equipment From PRG Audio  
Video Equipment Supplied by Sound Associates

### Costumes by:

Eric Winterling, Inc.	Redthreaded	Jan Parran LLC
John Kristiansen New York Inc.	Timberlake Studios Inc.	Lynne Bacuss
Jennifer Love Costumes	Artur & Tailor LTD	Pat Sullivan
Kroystne Studio	Primadonna Inc.	Marsha Kuligowski

### Additional Millinery:

Caryn Wells  
JRenne Studio  
Arnold S. Levine

### Shoes by:

La Duca  
Worldtone  
Fugawee Co. Historical Shoes

### Special Thanks to:

Goodspeed Costume Rentals  
Yale Costume Rentals

Conductor .....	<b>Thomas Murray</b>
Keyboard 1 .....	<b>Steven Malone</b>
Keyboard 2 .....	<b>Gary Chapman</b>
Drums/Percussion.....	<b>Bruce Doctor</b>
Violin.....	<b>Martha Kayser</b>
Violin/Viola .....	<b>Lu Friedman</b>
Cello .....	<b>Katherine Kennedy</b>
Reed 1.....	<b>Fred DeChristofaro</b>
Reed 2 .....	<b>Michael Schuster</b>
Trumpet .....	<b>John Thomas</b>
Horn.....	<b>Jaime Thorne</b>
Trombone .....	<b>George Sanders</b>
Bass .....	<b>Joseph Messina</b>
Keyboard Programmer.....	<b>Randy Cohen</b>
Associate Keyboard Programmer.....	<b>Taylor Williams</b>
Assistant Keyboard Programmer .....	<b>Jeremy King</b>

*Proud supporter of Hartford Stage*

**EVERY  
SOUND IS  
UNIQUE**

*Let us help you  
find yours!*



**Falcetti Music**  
Find your sound



1755 Boston Road, Springfield MA

**falcettimusic.com**



**ACT I**

*Setting:* Saint Petersburg, 1907, 1917, and 1927

Prologue: Once Upon a December .....	<b>Dowager Empress and Anastasia, Age 6</b>
Dance of the Romanovs.....	<b>Company</b>
A Rumor in St. Petersburg .....	<b>Dmitry, Vlad and Company</b>
In My Dreams .....	<b>Anya</b>
The Rumors Never End.....	<b>Ensemble</b>
A Simple Thing .....	<b>Gleb and Ensemble</b>
Learn to Do It .....	<b>Vlad, Anya and Dmitry</b>
Anya .....	<b>Gleb</b>
The Neva Flows.....	<b>Male Ensemble</b>
My Petersburg.....	<b>Dmitry and Anya</b>
Once Upon a December.....	<b>Anya and Ensemble</b>
In My Dreams (reprise).....	<b>Anya</b>
Stay, I Pray You .....	<b>Count Ipolitov, Anya, Dmitry, Vlad, and Ensemble</b>
We'll Go From There .....	<b>Vlad, Anya, Dmitry and Ensemble</b>
Traveling Sequence.....	<b>Gleb, Gorlinsky, Anya, Dmitry and Vlad</b>
Journey to the Past.....	<b>Anya</b>

---

THERE WILL BE ONE INTERMISSION

---

**ACT II**

*Setting:* Paris, 1927

Paris Holds the Key (To Your Heart) .....	<b>Vlad, Dmitry, Anya and Ensemble</b>
Crossing a Bridge.....	<b>Anya</b>
Close the Door .....	<b>Dowager Empress</b>
Land of Yesterday .....	<b>Lily, Gleb and Ensemble</b>
The Countess and the Common Man.....	<b>Vlad and Lily</b>
A Nightmare .....	<b>Romanov Children, Tsar and Tsarina</b>
In a Crowd of Thousands .....	<b>Dmitry and Anya</b>
I Never Should Have Let Them Dance.....	<b>Vlad</b>
Quartet at the Ballet .....	<b>Anya, Dmitry, Dowager Empress and Gleb</b>
Everything to Win.....	<b>Dmitry</b>
Once Upon a December (reprise).....	<b>Anya and Dowager Empress</b>
The Press Conference .....	<b>Lily, Vlad and Male Ensemble</b>
Everything to Win (reprise) .....	<b>Anya</b>
A Simple Thing (reprise) .....	<b>Gleb and Ensemble</b>
In A Crowd of Thousands (reprise).....	<b>Anya and Dmitry</b>
Finale .....	<b>Anya, Dmitry and Company</b>



My favorite Shakespeare plays are his late romances: *Pericles*, *Cymbeline*, *The Winter's Tale* and *The Tempest*. They tell of families torn asunder, of long and perilous voyages, and of improbable yet heartbreaking reunions. They seem to encompass all of life's joys and sorrows. And at or near the center of each one is a mysterious and determined young woman.

The same is true of *Anastasia*. I have come to think of it as a theatrical romance and of the title character (whose name means "resurrection") as our Marina or Imogen. I suspect that everyone, but especially immigrant children like myself, who learn about separation and loss from an early age, has a need to believe in stories like *Anastasia*.

Since the recent DNA findings about the Romanov family, we just know for certain what we pretty much knew all along: Anna Anderson was not Anastasia. To me, that does not really matter. A fabrication gave birth to a myth, a modern romance. As Paulina says so movingly at the end of *The Winter's Tale*: "It is required you do awake your faith."

—Darko Tresnjak

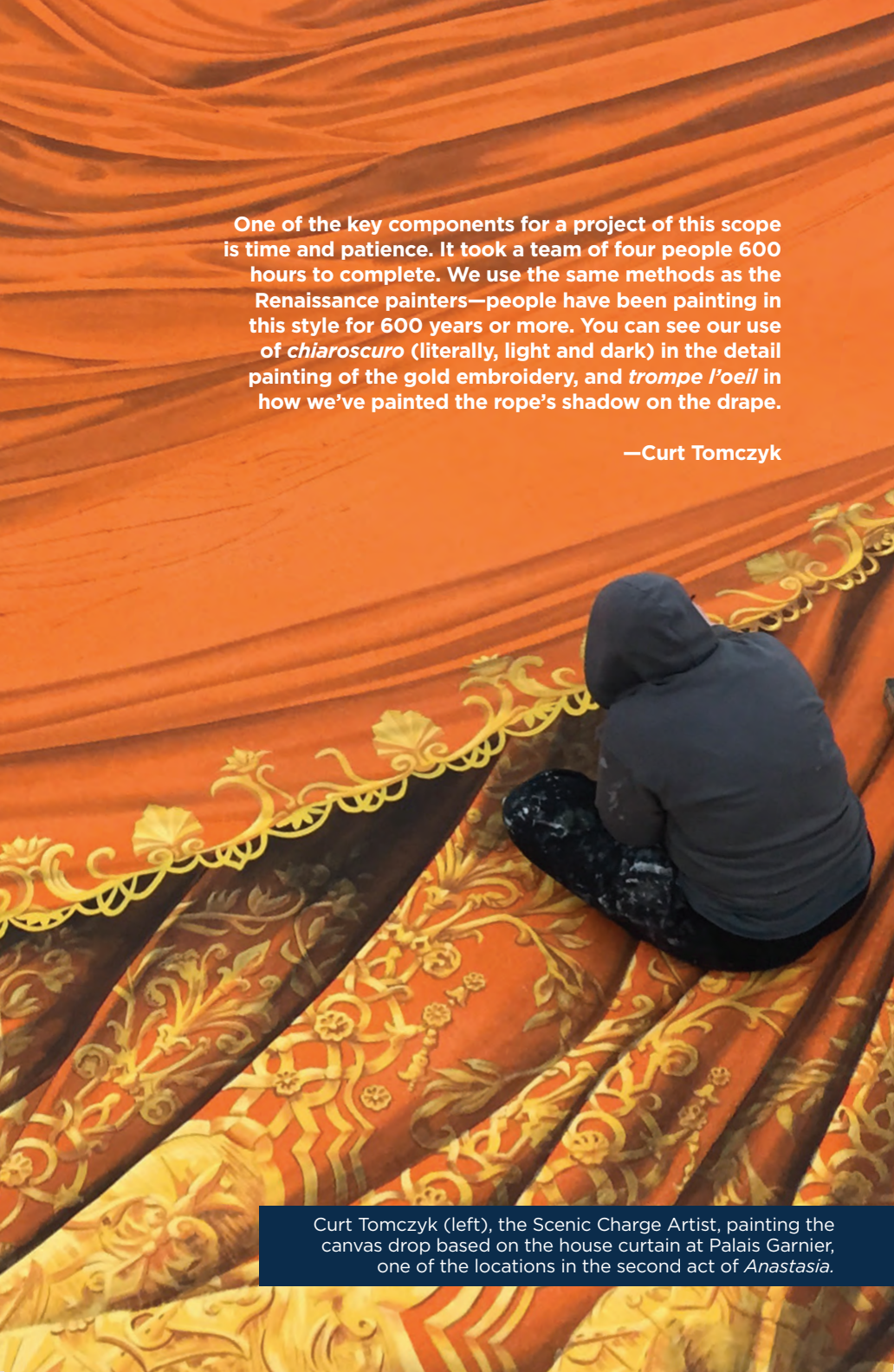


Aaron Rhyne's rendering of Pont Alexandre III, completed in 1900, named after Tsar Alexander III, Anastasia's grandfather.









One of the key components for a project of this scope is time and patience. It took a team of four people 600 hours to complete. We use the same methods as the Renaissance painters—people have been painting in this style for 600 years or more. You can see our use of *chiaroscuro* (literally, light and dark) in the detail painting of the gold embroidery, and *trompe l'oeil* in how we've painted the rope's shadow on the drape.

—Curt Tomczyk

Curt Tomczyk (left), the Scenic Charge Artist, painting the canvas drop based on the house curtain at Palais Garnier, one of the locations in the second act of *Anastasia*.

Seeing *Ragtime* for the first time was a life changing event in my career. I was friends with the conductor who subsequently let me sit in the pit and immerse myself in the glorious work. The fusion of music, text and visuals combined to make me passionately interested in story telling through movement. In all honesty, it is a dream come true to work with Terrence McNally, Lynn Ahrens and Stephen Flaherty. I am still pinching myself.

*Anastasia* spans countries, decades and movement styles using so many of the colors on my palette. I have enjoyed creating dances that range from ethnic troikas and mazurkas to jazz age Charlestons and imperial Russian ballet. My 15 year association with Darko has granted us a shared vocabulary and history which allows us to work ever more closely with a mutual passion and sense of purposeful storytelling.

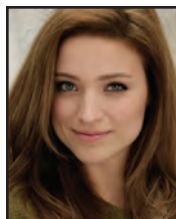
—Peggy Hickey





Choreographer Peggy Hickey (right) collaborating with the cast members Shina Ann Morris, Molly Rushing and Samantha Sturm on video footage used in *Anastasia*.





Christy Altomare



Lauren Blackman



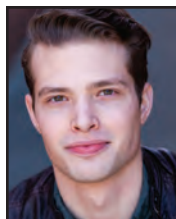
John Bolton



Riley Briggs



James Brown III



Maxwell Carmel



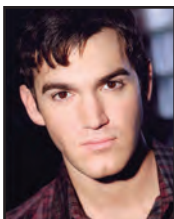
Max Clayton



Janet Dickinson



Manoel Felciano



Constantine Germanacos



Rayanne Gonzales



Derek Klena



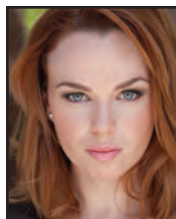
Ken Krugman



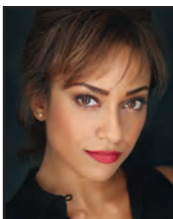
Kevin Ligon



Katherine McLellan



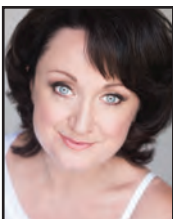
Alida Michal



Shina Ann Morris



Kevin Munhall



Caroline O'Connor



Mary Beth Peil



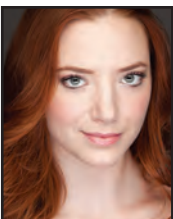
Molly Rushing



Nicole Scimeca



Johnny Stellard



Samantha Sturm



## CHRISTY ALTOMARE

### ANYA

**Hartford Stage:** Debut. **Broadway:** *Mamma Mia!* **Off-Broadway:** *Carrie* (Lucille Lortel Theater). **National Tour:** *Spring Awakening* (first national tour). **Regional:** *Daddy Long Legs* (Gem Theater/Detroit); *Camelot* (Drury Lane/ Chicago). **Television:** *The Big C*. **Cast Recordings:** *Carrie: The Musical*. **Original Music Recordings** (singer/songwriter): *After You; Waiting for You*. **Education:** BFA Musical Theater from Cincinnati College Conservatory of Music. Thank you so much to Hartford Stage and the creative team of this beautiful show. Also, thank you to Station 3, Abrams Artists Agency, Telsey + Co., and the many teachers, supporters, friends, and family who have guided and cheered me on along this journey. Love you all!

## LAUREN BLACKMAN

### TSARINA ALEXANDRA | ISADORA DUNCAN

**Hartford Stage:** Debut. **Off-Broadway:** *Next Thing You Know* (Original Cast Album); *A Tree Grows In Brooklyn*. **National Tours:** 50th anniversary tour of *Hello Dolly!* (Irene Molloy). **Regional:** *Little Dancer* (Kennedy Center); Leading roles in *Mary Poppins*, *The Music Man*, *The Addams Family*, *Singin' in the Rain*, *Nine*, *Sunset Boulevard*. Heartfelt thanks to the entire creative team, Craig Burns, LTA, all my B's. [www.laurenblackman.com](http://www.laurenblackman.com)

## JOHN BOLTON

### VLAD POPOV

**Hartford Stage:** Debut. **Broadway:** *Dames at Sea*, *A Christmas Story: The Musical* (Drama Desk nomination), *Curtains*, *Monty Python's Spamalot*, *Contact*, *Titanic*, *How to Succeed In Business Without Really Trying*, *Damn Yankees*. **NYC:** *Guys & Dolls* (Carnegie Hall); NY Pops soloist (Carnegie Hall); NY Philharmonic soloist (Lincoln Center); Off-Broadway's *Pageant*, *The Last Smoker In America*, *The Bilbao Effect*, *Five Course Love*, *It's Only Life* and several productions with Project Shaw. **Regional:** leading roles at The Ahmanson, The Old Globe, San Francisco Opera, Arena Stage, Goodspeed, The Muny, Kansas City Rep, Geva, Houston TUTS, Pittsburgh CLO, Ogunquit Playhouse, The Hangar, Westport Playhouse, many more. **TV/Film:** 4 seasons on *Gossip Girl* plus roles on *Unbreakable Kimmy Schmidt*, *Blue Bloods*, *The Good Wife*, *Boardwalk Empire*, *Law & Order: Criminal Intent*, *Ed*, *Submissions Only*, *Show Boat* (PBS), *The Savages*, recurring on *All My Children* and *As the World Turns*. For OTMA. @ItsJohnBolton

## RILEY BRIGGS

### ANASTASIA, AGE 6 | PRINCE ALEXEI ROMANOV (UNDERSTUDY)

**Hartford Stage:** Debut. **Regional:** Beth in *A Wonderful Life* (Goodspeed Musicals). **Theatre:** *The Addams Family Musical*, *Oliver*, *Honk Jr.*, *Little Mermaid Jr.*, *Beauty and the Beast Kids*, *Annie Jr.* **Training:** Young People's Center for Creative Arts, Enchanted Castle Dance Studio, Private Tap with Kate Cavenagh D'Onofrio. **Other:** Cello, Trombone.

## JAMES BROWN III

### SUITOR | HOTEL MANAGER

**Hartford Stage:** Debut. **Broadway:** *Rocky*, *Wicked*, *Ghost*, *Priscilla Queen of the Desert*, *Memphis*, *The Little Mermaid*, *The Color Purple*, *The Frogs*. **National Tours:** *The Lion King* (First National Tour); *The Producers* (First National Tour). **Regional:** *The C.A. Lyons Project* (The Alliance Theater); *The Last Goodbye* (The Old Globe); *The Wild Party* (City Center Encores!); *Girl Crazy* (City Center Encores!). **Film:** *Monogamish*, *Love for Passion*, *Orin-Inu*, *The Producers*. **Television:** *The Wiz Live!*, *Peter Pan Live!*, *The Mysteries of Laura*, *Forever*, *Mr. Robot*, *The Get Down*. **Education:** Brown University (Psychology). **Professional Positions:** Creative Director & Fashion Editor of *Broadway Style Guide* [www.broadwaystyleguide.com](http://www.broadwaystyleguide.com). **Social Media:** [www.JamesBrownIII.com](http://www.JamesBrownIII.com); Insta: @JamesBrownIII; Twitter: @TheJBIII.

## MAXWELL CARMEL SWING

**Hartford Stage:** Debut. **Regional:** *Only Anne* (Goodspeed Musicals); *A Little Night Music*, *Forever Plaid*, *Damn Yankees*, *Kiss Me Kate*, *Spamalot* (New London Barn Playhouse); *South Pacific* (Ivoryton Playhouse); *The King and I*, *She Loves Me* (Monomoy Theatre); *Little Men* (Peterborough Players). **Education:** BFA Music Theatre at The Hartt School, University of Hartford. Performances: *Robber Bridegroom*, *Titanic*, *The Mystery of Edwin Drood*, *On Your Toes*.

## MAX CLAYTON

### SUITOR | PRINCE SIEGFRIED IN SWAN LAKE

**Hartford Stage:** Debut. **Broadway:** *On The Town* (u/s Gabey), *Gigi* (Martel, u/s Gaston). **Regional:** *The Bandstand* (Paper Mill Playhouse); Riff in *West Side Story* (Signature Theatre, Helen Hayes nomination); Slim in *Oklahoma!* (Lyric Opera of Chicago); Ren McCormack in *Footloose* (Kansas City Starlight); *Gigi* (Kennedy Center); Gabey in *On The Town* (Marriott Theatre); The MUNY, Pittsburgh CLO, MTWichita, NSMT, Palace Theatre. **Education:** BFA, CCM. Special thanks to Missy, Mom, Dad, family and friends! For Nana and Bumpa! @maxmclayton

## JANET DICKINSON

### COMRADE | COCO CHANEL

**Hartford Stage:** Debut. **Recent:** Kay in *Chasing Rainbows* (world premiere at the Flat Rock Playhouse); Mary Cassatt in *Little Dancer* (world premiere at the Kennedy Center). **Broadway:** *Bullets Over Broadway* (u/s Helen Sinclair & Eden); *How The Grinch Stolen Christmas*; *Happiness* (Lincoln Center). **Tours:** Mrs. Wilkinson in *Billy Elliot*; 9 to 5 *The Musical*. **Off-Broadway:** Sandy in *Fat Camp*; *Forbidden Broadway's Rude Awakening* (cast recording and 2008 Drama Desk Award); *Madame X* (2011 NYMF Award for Best Individual Performance); Diane in *Citizen Ruth* (2009 Best Musical at the NY Fringe Festival). Janet is originally from Bemidji, MN. Thanks to Doug, my family, friends and agents at Carson/Kolker for all of their support.

## MANOEL FELCIANO

### GLEB

**Hartford Stage:** Debut. **Broadway:** *Cabaret*, *Jesus Christ Superstar*, *Brooklyn*, *Sweeney Todd*, *Disaster!* **Off-Broadway:** *Much Ado About Nothing* (New York Shakespeare Festival); *Shotheaded Peter* (Little Schubert); *Trumpet* (Atlantic Theater Company); *The Changeling* (Red Bull Theater). **Regional:** *Twelfth Night* (The Old Globe); *Sideshow* (La Jolla Playhouse); *Mothers and Sons* (World Premiere, Bucks County Playhouse); *The Exorcist* (The Geffen Playhouse); *Tales Of The City*, *Clybourne Park*, *Round And Round The Garden*, *The Caucasian Chalk Circle*, *November*, *Edward Albee's At Home At The Zoo*, *Rock 'N' Roll* (A.C.T.); *Elektra* (The Getty Villa); *Ragtime* (Kennedy Center); *Three Sisters* (Williamstown); *Turandot-The Rumble For The Ring* (Bay Street); *Sunday In The Park With George* (Reprise LA); *Just Stopped By To See The Man* (The Old Globe). **Film:** *Uncertainty*. **Television:** *Elementary*, *NCIS*, *Trauma*, *The Unusuals*, *Life on Mars*, *All My Children*, *One Life to Live*. **Education:** B.A. Humanities, Yale University; M.F.A. Acting, NYU Tisch Graduate Acting Program. **Awards:** Tony Nomination, Best Featured Actor in a Musical, *Sweeney Todd* 2006; San Diego Critics Circle Nomination for Outstanding Featured Performance in a Play, Male – *Twelfth Night*, Old Globe.

## CONSTANTINE GERMANACOS

### TSAR NICHOLAS II | COUNT IPOLITOV

**Hartford Stage:** Debut. **Broadway:** *Evita*. NYC: *Guys & Dolls* (Carnegie Hall); *King Kong* (reading); *I Am Harvey Milk* (reading); *Fanny* (Encores!); *Inconnu* (reading, The Public Theater). **Regional:** *The Unsinkable Molly Brown* (Denver Theatre Center; Henry Award nominee); *The Light in the Piazza* (TheatreWorks Palo Alto and Pioneer Theatre Company; SFBATCC Award); *My Fair Lady* (Cape Playhouse); *On A Clear Day* (NY Stage & Film); *Les Misérables* (Walnut Street

Theatre and California Musical Theatre); *The Three Musketeers* (Chicago Shakespeare Theatre); *Jesus Christ Superstar* and *Cinderella* (North Shore Music Theatre); *Brigadoon* (Merry Go Round Playhouse). **Concerts:** *Kristin Chenoweth In Concert* (Jazz @ Lincoln Center; Australia Tour; Hollywood Bowl; Saenger Theater; Smith Center; Carnegie Hall). *Bolshoye spasibos* to Craig, Darko and the colossally gifted *Anastasia* team, to Josh and to Ingrao. Pour mon amour, JPS.

## RAYANNE GONZALES

COMRADE | GERTRUDE STEIN

**Hartford Stage:** Debut. **Broadway:** *The Phantom of the Opera*, *Hands On A Hardbody*. **National Tours:** *In the Heights* (First National). **Regional:** *Oliver*, *Destiny of Desire* (World Premiere), *My Fair Lady*, *Damn Yankees*, *Señor Discretion Himself* (World Premiere) (Arena Stage); *South Pacific* (North Carolina Theatre, Casa Mañana); *Porgy & Bess* (Natchez Music Festival); *OLIVERio* (World Premiere) (Kennedy Center). **Television:** *The Sound of Music Live!*. **Education:** Boston University, Longy School of Music. **Awards:** National Federation of Music Clubs Young Artist Competition Winner, MET Regional Finalist, Heida Hermanns International Voice Competition Finalist.

## DEREK KLENA

DMITRY

**Hartford Stage:** Debut. **Broadway:** *The Bridges of Madison County* (OBC), *Wicked* (10th Anniversary Company). **Off-Broadway:** *Dogfight* (Second Stage, Clive Barnes Award Nom.), *Carrie* (MCC). **Regional:** *Diner* (Signature Theatre (D.C.), Delaware Theatre Company), *Unknown Soldier* (Williamstown Theatre Festival), *Hairspray* (Hollywood Bowl). **Television:** *Unbreakable Kimmy Schmidt* (Netflix), *Blue Bloods* (CBS), *Law and Order: SVU* (NBC), *Carrie Diaries* (CW), *Tomorrow People* (CW), *One Bad Choice* (MTV). Heartfelt thanks and appreciation to the *Anastasia* team, Telsey + Co., Gersh, Hartford Stage and my amazing family, friends and mentors for their endless love and support.

## KEN KRUGMAN

GORLINSKY | PABLO PICASSO

**Hartford Stage:** Debut. **Broadway:** *The Visit* (with Chita Rivera), *Assassins*, *Candide*, *Les Misérables*. **Off-Broadway:** *Splendor*, *Asylum*, *Passion*, *Irma La Douce* (City Center Encores). **National Tours:** *Jersey Boys*, *Dirty Rotten Scoundrels*, *Les Misérables*, *Titanic*, *Sherlock Holmes*. **Regional:** Guthrie Theatre, Arena Stage, Goodspeed, Bay Street Theatre, Two Rivers Theatre, Capital Rep., Centenary Stage, Theatre Aspen, Man In the Moon Theatre (London). **Film:** *Let It Snow*. **Television:** *Blue Bloods*, *Royal Pains*, *Law & Order(s)*, *Hope & Faith*, *Chappelle's Show*, *Late Show with David Letterman*. **Education:** BFA Ithaca College.

## KEVIN LIGON

COMRADE | ERNEST HEMINGWAY | COUNT LEOPOLD

**Hartford Stage:** Debut. **Broadway:** *On The Twentieth Century*, *Bullets Over Broadway*, *The Phantom of The Opera*, *Sister Act*, *Finian's Rainbow*, *Young Frankenstein*, *The Producers*, *Kiss Me Kate*, *1776*, *The Secret Garden*. **Off-Broadway:** *Forbidden Broadway*, *The Chosen*; City Center Encores: *1776*, *Fiorello*, *Finian's Rainbow*, *Carnival*, *The Boys From Syracuse*. **National Tours:** *Young Frankenstein*; *The Producers*; *A Grand Night For Singing*; *Guys and Dolls* (Jeff Award); *Stardust*; *Grease*; *Hello, Dolly!* starring Carol Channing. **Regional:** *Tim and Scrooge* (Westchester Broadway Theatre); *A Gentleman's Guide to Love and Murder* (Old Globe); *A Christmas Carol* (Geva Theatre); *Curtains* (Pittsburgh CLO); *Five Course Love* (Geva Theatre); *Man of La Mancha* (Sacramento Music Circus); *Sweeney Todd* (Kennedy Center – Sondheim Celebration); *The Apple Tree* (Goodspeed Opera House); *South Pacific* (Dallas Theater Center); *A Funny Thing... Forum* (Casa Manana); *By Jeeves* (Goodspeed/Geffen Playhouse); *Sweeney Todd* (Pittsburgh Public Theatre). **Film:** *The Producers* (2005). **Television:** *Law & Order: SVU*, *Curb Your Enthusiasm*. **Education:** BFA in Theatre, Southern Methodist University.

**KATHERINE McLELLAN****SWING**

**Hartford Stage:** Debut. **Regional:** *Les Misérables* (Connecticut Repertory Theatre, dir. Terrence Mann); *The Best of Broadway* (Goodspeed Musicals and Hartford Symphony Orchestra); *We Foxes* (Goodspeed Festival of New Musicals); *Romeo and Juliet* (Capital Classics). **Film:** *Voids*. **Education:** BFA, The Hartt School, University of Hartford. Productions: *The Mystery of Edwin Drood*, *Titanic*, *Robber Bridegroom*, *On Your Toes*. **Awards:** Lotte Lenya Emerging Talent Award, Dorothy Goodwin Academic Scholar

**ALIDA MICHAL****MARIA ROMANOV | MARFA | ODETTE IN SWAN LAKE**

**Hartford Stage:** Debut. **NY Theatre:** *Wonderful Town*, *Red Dirt/White Trash*. **Tours:** Chicago (Hunyak). **Regional:** *West Side Story* (Graziella), *Victor/Victoria*, *Hello Dolly*, *White Christmas*, *Gyps and Dolls* (Mimi). **Ballet:** Sacramento Ballet, Ballet Austin. **Education:** BA UCLA TFT, Ray Bolger MT program. Many thanks to Darko, Peggy, Terrence, Lynn, Stephen, Hartford Stage, Marianne Wells, Avalon Artists Group, and my ever supportive family. [www.alidamichal.com](http://www.alidamichal.com)

**SHINA ANN MORRIS****TATIANA ROMANOV | TATYANA | JOSEPHINE BAKER**

**Hartford Stage:** *Kiss Me, Kate*. **Broadway:** *Annie* (Star to Be), *Cinderella*, *Nice Work If You Can Get It*, *Anything Goes* (u/s Erma), *West Side Story* (Consuela). **Tour:** Chicago (Annie). **New York:** *Bells Are Ringing*, *Most Happy Fella* (City Center Encores!). **Education:** BFA, U of Michigan. **Personal:** Thanks to God, Mom, Sasha, Dad, family, WB, MM, the Davises, teachers & mentors, the Telsey family, & always my heart, Mark.

**KEVIN MUNHALL****COMRADE | RUSSIAN DOORMAN**

**Hartford Stage:** Debut. **Broadway:** *Anything Goes*, *Allegiance*. **Off-Broadway:** *Bells Are Ringing*, *Paint Your Wagon* (City Center Encores!); *The Sound of Music* (Carnegie Hall); *Hansel and Gretel* (Avery Fisher). **National Tour:** *Dirty Dancing*. **Regional:** *Kiss Me, Kate* (Old Globe); *Ever After* (Paper Mill Playhouse); *West Side Story* (Ogunquit Playhouse & MTWichita); *The Music Man* (Walnut Street). **Television:** *Smash*, *One Life to Live*.

**CAROLINE O'CONNOR****COUNTESS LILY MALEVSKY-MALEVITCH**

**Hartford Stage:** Debut. **Recent:** Reno Sweeney in *Anything Goes* (Sydney Opera House/Helpmann Award); Rose in *Gypsy* (Arts Centre, Melbourne); Phyllis in *Follies* (Chicago Shakespeare Theatre/Jeff Award); Mrs. Lovett in *Sweeney Todd* (Chatelet Theatre, Paris); Sarah Jane Moore in *Assassins* (Milwaukee Rep); *Life of the Party* (Menier Chocolate Factory, London). **Broadway:** Velma Kelly in *Chicago*, Miss Shields in *A Christmas Story the Musical*. **West End:** Mabel Normand in *Mack and Mabel* (Piccadilly Theatre/Olivier nomination); Bombshells (Arts Theatre/Olivier nomination); Hildy Esterhazy in *On The Town* (English National Opera & Chatelet Theatre, Paris); *Romance/Romance*, *Street Scene* (English National Opera); *Matador*, *The Rink*, *Cabaret*, *Me and My Girl*. **Regional:** Ellie-May Chipley in *Showboat* (Royal Shakespeare Company & Opera North); Lola in *Damn Yankees*, Lizzie in *Baby*, The Witch in *Into the Woods*, Cassie in *A Chorus Line* (UK National Tour). **In Australia:** Velma Kelly in *Chicago*, Anita in *West Side Story*, Aldonza in *Man of La Mancha*, Fanny Brice in *Funny Girl*, Edith Piaf in *PIAF*, *Bombshells* and Judy Garland in the world premiere of *End of The Rainbow*. **Film:** Nini Legs in the Air in Baz Luhrmann's *Moulin Rouge*, Ethel Merman in the Cole Porter biopic *De-Lovely*, and Georgia in *Surviving Georgia*. **Solo CD's:** *What I did for Love*, *Stage to Screen*, *A Tribute to Piaf* and *A Tribute To Garland*. [www.carolineoconnor.com](http://www.carolineoconnor.com)

## MARY BETH PEIL DOWAGER EMPRESS

**Hartford Stage:** Debut. **Broadway:** *The Visit*, *Follies*, *Women on the Verge of a Nervous Breakdown*, *Sunday in The Park with George*, *The King and I*. **Off-Broadway:** *Dying For It*, *Three Penny Opera*, *The Room*, *Frame 312*, *Missing Persons* (Atlantic Theatre); *A Cheever Evening*, *Later Life* (Playwrights Horizon); *Sylvia* (Manhattan Theatre Club); *Hedda Gabler* (New York Theatre Workshop). **Regional:** *His Girl Friday*, *The Third Story* (Lajolla Playhouse); *The Cocktail Hour* (Long Wharf); *Lucky Duck* (Old Globe); *33 Variations*, *A Month in the Country* (Arena Stage); *Triumph of Love*, *Hayfever* (Yale Rep); *The Naked Eye* (A.R.T.); *Hamlet* (The Huntington); *Tales of The Vienna Woods*, *Anthony and Cleopatra* (Actors Theater Louisville); *M Proust* (About Face Theater). **Film:** *Mirrors*, *Flags of Our Fathers*, *Odd Couple 2*, *Stepford Wives 2*. **Television:** *The Good Wife*, *Dawson's Creek*, *The Fringe*, *The Reagans*, *Law & Order*, *Law & Order: SVU*. **Education:** Bachelor of Music from Northwestern University. **Awards:** OBIE Award; Nominations for Tony, Outer Critics Circle, Helen Hayes, and Jefferson. **Opera:** Metropolitan Opera Auditions Winner, First contract Metropolitan National Company, NY Concert Debut with Young Concert Artists. Member of Atlantic Theatre Company.

## MOLLY RUSHING

ANASTASIA, AGE 17 | ANNA

**Hartford Stage:** Debut. **Off-Broadway:** *Babes in Toyland* (Avery Fisher Hall). **Regional:** Rodger's and Hammerstein's *Cinderella* at Gateway Playhouse (Cinderella); *Finian's Rainbow* at Music Theatre of Wichita (Susan the Silent); *Call Me Madam* at Lyric Theatre of Oklahoma (Princess Maria); *Mary Poppins* at MT Fingerlakes Festival. **Education:** BM from Oklahoma City University. Endless thanks to Peggy, Darko, Telsey, TPG and this wonderful team. Thank you Mom for driving me to ballet class.

## NICOLE SCIMECA

ANASTASIA, AGE 6 | PRINCE ALEXEI ROMANOV

**Hartford Stage:** Debut. **National Tour:** Dr. Seuss' *How the Grinch Stole Christmas* (Grand Ole Opry, Nashville, TN). **Regional:** *Les Misérables*, 2015 Jeff Award Best Musical (Paramount); *Sound of Music* with Billy Zane (Lyric Opera of Chicago). **Film:** *Thrill Ride* with Kristen Johnston, *Halfway* with Quinton Aaron. **Television:** *Wizard of Lies*, *Chicago Fire*. Many thanks to: family, friends, Don Buchwald & Associates, Big Mouth Talent, Management by Morgan and the creative team of Anastasia for giving Nicole this incredible opportunity. [www.nicolescimeca.com](http://www.nicolescimeca.com).

## JOHNNY STELLARD

VON ROTHBART IN *SWAN LAKE* | DJANGO REINHARDT | DANCE CAPTAIN

**Hartford Stage:** *Kiss Me, Kate*. **Broadway:** *Evita*. **Off-Broadway:** *A Tree Grows in Brooklyn* (Theatre at St. Clement's). **National Tour:** *Evita*. **Regional:** *The Drowsy Chaperone* (North Carolina Theatre); *A Christmas Carol* (Arkansas Rep.); *The Music Man* (Geva Theatre); *Curtains*, *My Fair Lady*, *Les Misérables* (Music Theatre of Wichita). **Television:** PBS Great Performances; 66th Annual Tony Awards. **Education:** Elon University.

## SAMANTHA STURM

OLGA ROMANOV | COMRADE | CYGNET IN *SWAN LAKE*

**Hartford Stage:** Debut. **Original Broadway casts:** *On the Town*, *The Addams Family*, *Nice Work If You Can Get It*, and *Matilda*. **Recent:** she played the lead role of Dale Tremont in the *Top Hat* developmental lab, and also had the honor to perform in the Old Globe World Premiere of *In Your Arms*. Special shout-out to Marianne Wells! And yes, thanks mom for making me take ballet, even though I complained. A lot. **Twitter/IG:** @samanthasturm



**TERRENCE McNALLY****BOOK**

Recipient of the Dramatists Guild of America Lifetime Achievement award, Tony awards for his plays (*Master Class* and *Love! Valour! Compassion!*) and his musical librettos (*Kiss Of The Spider Woman* and *Ragtime*) and an Emmy Award for *Andre's Mother*. An anthology of his plays, *Terrence McNally: A Memoir In Plays*, was recently published by Grove Press. He has provided the text for two American operas, *Deadman Walking* and *Great Scott*, both with Jake Heggie. There was a celebration of his work at the Kennedy Center in 2010 including the world premiere of *Golden Age*. *Anastasia* is his third collaboration with Lynn Ahrens and Stephen Flaherty and his first with Darko Tresnjak. He is grateful to Hartford Stage for their enthusiastic and professional support of theatre artists and their new work. Next up: a new play, *Fire And Air*.

**LYNN AHRENS****LYRICIST****STEPHEN FLAHERTY****COMPOSER AND VOCAL ARRANGER**

Lynn Ahrens and Stephen Flaherty have been collaborators since 1983. For Broadway's *Ragtime*, they won Tony, Drama Desk and Outer Critics Circle Awards and received two Grammy nominations. They were also nominated for two Academy Awards and two Golden Globes for the score of Twentieth Century Fox's animated feature *Anastasia*. They're thrilled to be bringing *Anastasia* to the stage with collaborator Terrence McNally. Selected theater credits include *Once On This Island*; *Seussical*; *Rocky*; *Little Dancer*; *Chita Rivera: The Dancer's Life*; *Lucky Stiff*; and Lincoln Center Theater's *Dessa Rose*, *A Man of No Importance*, *My Favorite Year* and *The Glorious Ones*. Individually, Ms. Ahrens is an Emmy Award winner, a mainstay writer for *Schoolhouse Rock*, and wrote book and lyrics for Madison Square Garden's *A Christmas Carol*. Mr. Flaherty wrote the score for the new dance musical *In Your Arms* at the Old Globe, and incidental musical for Neil Simon's Broadway play *Proposals*. In 2015 they were inducted into the Theater Hall of Fame. Council, Dramatists Guild of America, co-founders of the Dramatists Guild Fellows Program. [www.ahrensandflaherty.com](http://www.ahrensandflaherty.com).

**Telsey + Company:**

**Bernard Telsey CSA, William Cantler CSA, David Vaccari CSA,**

**Bethany Knox CSA, Craig Burns CSA,**

Tiffany Little Canfield CSA, Rachel Hoffman CSA,

Justin Huff CSA, Patrick Goodwin CSA, Abbie Brady-Dalton CSA,

Cesar A. Rocha CSA, Karyn Casl CSA, Kristina Bramhall,

Conrad Woolfe CSA, Rachel Nadler, Rachel Minow,

Scott Galina, Rikki Gimelstob, Madison Sylvester,

Lauren Harris, Laura Wade, Ally Kiley



## DARKO TRESNJAK

**DIRECTOR | ARTISTIC DIRECTOR**

In 2011, Darko Tresnjak became only the fifth artistic director to lead Hartford Stage. Since then the theatre has presented the world premieres of *A Gentleman's Guide to Love and Murder* on Broadway, winner of four 2014 Tony Awards, including Best Musical and Best Direction of a Musical by Darko; Quiera Alegria Hudes' *Water by the Spoonful*, winner of the 2012 Pulitzer Prize for Drama; *Breath & Imagination* by Daniel Beaty; and Big Dance Theatre's *Man in a Case* with Mikhail Baryshnikov. Darko Tresnjak

was the Artistic Director of the Old Globe Shakespeare Festival in San Diego from 2004 to 2009. His directing credits at the Old Globe include *Cyrano de Bergerac*, *Coriolanus*, *The Women*, *The Pleasure of His Company*, *All's Well That Ends Well*, *Bell, Book and Candle*, *Hamlet*, *Titus Andronicus*, *A Midsummer Night's Dream*, *The Winter's Tale*, *A Comedy of Errors*, *Antony and Cleopatra*, *The Two Noble Kinsmen*, and *Pericles*. He received four awards from the San Diego Theatre Critics Circle: for outstanding direction of *Cyrano de Bergerac*, *The Winter's Tale*, and *Pericles* and for Excellence in Artistic Direction. Tresnjak's directing career began at the Williamstown Theatre Festival where over eight seasons he directed *The Skin of Our Teeth*, *Rosencrantz and Guildenstern Are Dead*, *The Love of Three Oranges*, *Princess Turandot*, *The Blue Demon*, *The Winter's Tale*, *Moving Picture*, and *Under Milk Wood*. He has also directed at the Joseph Papp Public Theater, Theatre for a New Audience, Oregon Shakespeare Festival, Chicago Shakespeare Theater, Vineyard Theatre Company, and Blue Light Theater Company. From 2002-2004 he was Director in Residence at Boston's Huntington Theatre Company where his productions included *What the Butler Saw*, *Heartbreak House*, and *Amphitryon*. Tresnjak grew up in Yugoslavia, the United States and Poland. He was educated at Swarthmore College and Columbia University and became an American citizen shortly after graduation. Between college and graduate school, he studied at the Martha Graham School, performed with numerous Philadelphia dance and theatre companies, and toured across the United States and Japan with Mum Puppettheatre. He is the recipient of grants from Theatre Communications Group, Pennsylvania Council on the Arts, National Endowment for the Arts, and the Alan Schneider Award for Directing Excellence.

## PEGGY HICKEY

**CHOREOGRAPHER**

**Hartford Stage:** *Kiss Me, Kate*; *A Gentleman's Guide to Love & Murder*. **Broadway and NYC:** The Tony Award-winning Best New Musical *A Gentleman's Guide to Love & Murder* (Outer Critics Circle and Astaire nominations for Best Choreography); *Hansel and Gretel*, *La Rondine*, *The Most Happy Fella*, *My Fair Lady*, *Lucky To Be Me: the music of Leonard Bernstein* (Lincoln Center). **Chatalet, Paris:** *The King and I*. **Off-Broadway:** *Antony and Cleopatra* (Theater for a New Audience). **Regional:** *Carnival*, *Amour*, *A Little Night Music*, *Brigadoon*, *King of Hearts*, *On The Twentieth Century* (Goodspeed); *Oklahoma!* (Paper Mill); *Oliver*, *Fiddler*, *Brigadoon*, *Carousel* (California Music Theater); *The Music Man* (The Bushnell). **Opera:** Los Angeles Opera, San Francisco Opera, Santa Fe Opera, Seattle Opera, New York City Opera, Chicago Lyric Opera, Dallas Opera, Houston Grand Opera, Hong Kong Arts Festival, Savonlinna Opera Festival. **Film:** *Woodshock* starring Kirsten Dunst, *The Brady Bunch Movie*. **Television:** *Samantha Who?*, *90210*, *Hot In Cleveland*, *General Hospital*. **Professional Positions:** On faculty at UCLA Theater, Film and Television, Ray Bolger Program. **Awards:** Connecticut Critics Circle Awards for *Brigadoon* and *On The Twentieth Century*: Best Choreography; MTV Award for Beck's *New Pollution*: Best Choreography.

## ALEXANDER DODGE

### SCENIC DESIGN

**Hartford Stage:** *Rear Window*; *Kiss Me, Kate*; *Private Lives*; *A Song at Twilight*; *Twelfth Night*; *A Gentleman's Guide to Love & Murder*; *The Tempest*; *Bell, Book & Candle*; *Zerline's Tale*. **Broadway:** *A Gentleman's Guide to Love & Murder* (Tony, Drama Desk & Outer Critics Nominations), *Present Laughter* (Tony Nomination), *Old Acquaintance*, *Butley*, *Hedda Gabler*. **Off-Broadway:** *Ripcord* (Manhattan Theatre Club); *Lips Together, Teeth Apart*, *Modern Terrorism*, *All New People*, *Trust*, *The Water's Edge* (Second Stage); *Rapture Blister Burn*, *Maple and Vine* (Playwright's Horizons); *The Understudy* (Roundabout); *Measure for Pleasure* (Public Theatre); *Observe the Sons of Ulster...* (Lucille Lortel Award), *Chaucer in Rome* (Lincoln Center); *Antony and Cleopatra* (TFANA). **London West End:** *All New People*. **Opera:** *Ghosts of Versailles* (LA Opera); *An American Tragedy* (Glimmerglass); *Il Trittico* (Deutsche Oper Berlin); *Così fan Tutte* (Minnesota Opera); *Lohengrin* (Budapest). **Upcoming:** *A Funny Thing... Forum* (Two River); *Anastasia* (Hartford Stage). **Other Awards:** 3 Connecticut Critics Circle, 3 Craig Noel, 2 Elliot Norton, and 3 IRNE Awards. **Training:** Yale School of Drama.

## LINDA CHO

### COSTUME DESIGN

**Hartford Stage:** *Rear Window*, *Reverberation*, *Twelfth Night* (Connecticut Critics Circle Award), *A Gentleman's Guide to Love & Murder* (Connecticut Critics Circle Award), *The Whipping Man*, *Gee's Bend*, *A Raisin in the Sun*. **Broadway:** *A Gentlemen's Guide to Love and Murder* (Tony Award, Henry Hewes Design Award, Outer Critics Circle Nomination), *Velocity of Autumn*. **Off-Broadway:** *Merchant of Venice* (Theatre for a New Audience); *The Other Side* (Manhattan Theatre Club); *Some Men* (Second Stage Theatre); *Durango* (Public Theater); *Eli's Comin'* (Vineyard Theatre); *Hurricane* (Classic Stage Company); *The Author's Voice*, *Imagining Brad* (Drama Dept); *Ghost Stories* (Atlantic Theatre Company). **Regional:** *Aubergine* (Berkely Rep); *Christmas Carol* (McCarter Theater); *The Dog in the Manger* (Shakespeare Theatre); *Second Mrs Wilson* (Long Wharf Theater); *Mary's Wedding* (Westport Country Playhouse); *True West* (Williamstown Theatre Festival); *What the Butler Saw* (Huntington Theatre Company); *Comedy of Errors* (The Old Globe Theatre); *Magnolia* (Goodman Theatre); *Two Noble Kinsmen* (Chicago Shakespeare). **International:** *Merchant of Venice* (Royal Shakespeare Company); *The Story of My Life* (Can Stage, Canada). **Opera:** *Ghosts of Versailles* (LA Opera); *Die Vogel*, *Der Zwerg*/Der Zerbrochene Krug (LA Opera); *Mikado*, *Magic Flute* (Opera Theatre of Saint Louis); *Orfeo and Euridice* (Virginia Opera Association). **Other:** Currently residing in New York City, this Korean-born Designer is the proud recipient of the Theatre Development Fund's Irene Sharaff Young Master Award. **Education:** MFA, Yale School of Drama.

## DONALD HOLDER

### LIGHTING DESIGN

**Hartford Stage:** *Tiny Alice*, *Spunk*, *Love Langston...* **Broadway:** Fifty productions, two Tony Awards (*The Lion King* and *South Pacific*) and eleven Tony nominations. **Recent:** projects include *She Loves Me*; *Fiddler On The Roof*; *The Father*; *The King and I*; *On The Twentieth Century*; *The Bridges Of Madison County*; *Golden Boy*; *Spiderman—Turn Off The Dark*; *You Can't Take It With You*; *Ragtime*; *Movin' Out*; *Bullets Over Broadway*; *The Boy From Oz*; *Thoroughly Modern Millie*; *Promises, Promises*; many others. **Regional:** Center Stage, Arena Stage, Long Wharf, Steppenwolf, Goodman, Chicago Shakespeare, Seattle Rep, Williamstown, Old Globe, La Jolla Playhouse, Mark Taper Forum, Berkeley Rep, Denver Center, Huntington, many others. **NY Metropolitan Opera:** *The Magic Flute*, *Two Boys*, *Otello*. **Television:** *Smash* Seasons 1 and 2 (NBC-Dreamworks). **Education:** Yale School of Drama.

## PETER HYLENSKI

### SOUND DESIGN

**Hartford Stage:** Debut. **Awards:** Grammy, Olivier and four time Tony award nominated. **Selected Designs include:** *Something Rotten*, *Rock of Ages* (New York, London, Toronto, Australia, Las Vegas, US Tour), *After Midnight*, *Motown* (New York, London, US Tour), *The Scottsboro Boys*, *Side Show*, *Rocky*, *Bullets Over Broadway*, *Shrek the Musical* (New York, US Tour, London), *On A Clear Day*, *Lend Me A Tenor*, *Elf*, *Wonderland*, *Cry Baby*, *The Times They Are A-Changin'*, *The Wedding Singer*, *Sweet Charity*, *Martin Short: Fame Becomes Me*, *Little Women*, *Brooklyn*. **Other credits:** *Le Reve* and *ShowStoppers* at Wynn Las Vegas, *Ragtime* (London), *Rocky Das Musical* (Hamburg, Stuttgart), *King Kong* (Melbourne), *Bull Durham*, *Mame*, *Gotta Dance*, international arena tours of *How To Train Your Dragon* and *Walking with Dinosaurs*. Peter is also a producer and engineer for film, album and television projects and was the re-record mixer / sound supervisor on his fifth film for the American Museum of Natural History titled *Dark Universe*.

## AARON RHYNE

### PROJECTION DESIGN

**Hartford Stage:** *A Gentleman's Guide to Love and Murder* (also the Broadway and National Tour; winner of a Drama Desk Award for Outstanding Projection Design.) **Professional:** New York City based video artist and projection designer whose designs have been seen on stages around the world in over 100 productions of musicals, plays, operas, and dance performances. Recent projects include *Frozen* at Disney California Adventure and *The Ghosts of Versailles* at LA Opera. Other projects include **Broadway:** *Bonnie and Clyde*. **Opera:** *La Traviata* (Wolftrap); *Florencia en el Amazonas* (Opera Colorado, Utah Opera); *Jerry Springer: The Opera* (Carnegie Hall, Sydney Opera House). **Off-Broadway:** *Absolute Brightness* of Leonard Pelkey (Westside); *Bootycandy* (Playwrights Horizons); *Appropriate* (Signature); *Water By the Spoonful*, *Lonely I'm Not*, *The Blue Flower*, *All New People* (Second Stage); *Wild With Happy* (The Public, Drama Desk Nomination); *Graceland* (Lincoln Center). **Regional:** The Old Globe, La Jolla Playhouse, Berkley Rep, Asolo Rep, Huntington Theatre Company, The Geffen Playhouse, Shakespeare Theatre, Ford's Theatre, Trinity Rep. Mr. Rhyme currently teaches Projection Design at his alma mater, Fordham University. [www.aaronrhyme.com](http://www.aaronrhyme.com)

## CHARLES G. LAPOINTE

### WIG & HAIR DESIGN

**Hartford Stage:** *Rear Window*, *Ether Dome*, *The Underpants*, *Breath & Imagination*, *A Gentleman's Guide to Love & Murder*, *Gem of the Ocean*, *The Adventures of Tom Sawyer*, *Gee's Bend*, *Noises Off!*, *A Midsummer Night's Dream*. **Broadway:** *On Your Feet*, *Hamilton*, *Allegiance*, *The Color Purple* (revival), *Side Show*, *Elephant Man*, *A Gentleman's Guide to Love & Murder*, *Beautiful*, *After Midnight*, *Motown*, *Jeckyl and Hyde*, *Clybourne Park*, *Newsies*, *The Columnist*, *Magic/Bird*, *Bonnie and Clyde*, *The Mountaintop*, *Women on the Verge of a Nervous Breakdown*, *Merchant of Venice*, *Memphis*, *Henry IV*, *The Rivals*, *Cymbeline*, *Lombardi*, *Fences*, *Looped*, *Miracle Worker*, *Superior Donuts*, *33 Variations*, *Guys and Dolls*, *In the Heights*, *Jersey Boys*, *The Color Purple*, *Martin Short: Fame Becomes Me*, *Good Vibrations*, *The Apple Tree*, *A Raisin in the Sun*, *Cat on a Hot Tin Roof*, *The Lieutenant of Inishmoor*, *Radio Golf*, *Sight Unseen*, *High Fidelity*, *Xanadu*, and *Bring it On*.

## THOMAS MURRAY

### MUSIC DIRECTOR | CONDUCTOR

**Hartford Stage:** Debut. **Broadway:** *Honeymoon In Vegas*, *The Bridges of Madison County*, *Nice Work If You Can Get It*, *A Little Night Music*, *Sunday In The Park With George*. **London:** *A Little Night Music* (Chocolate Factory, West End); *Parade* (Donmar); *Pacific Overtures* (Donmar). **Premieres:** *The Last Five Years* (New York, London); *The Glorious Ones* (Ahrens/



Flaherty); *Loving Repeating* (Flaherty); *Saturday Night* (US premiere); *Parade* (US tour), *My Fair Lady* (McCarter), *Pacific Overtures* (Chicago Shakespeare), *Sweeney Todd*, *Passion*, *Anyone Can Whistle* (Ravinia Festival, Chicago). Recipient of four Joseph Jefferson Awards (Chicago) and one Barrymore Award (Philadelphia) for music-direction. **Future projects:** *Midnight In The Garden Of Good and Evil*.

## DOUG BESTERMAN

### ORCHESTRATOR

**Hartford Stage:** Debut. **Broadway:** *It Shoulda Been You*, *Bullets Over Broadway*, *Rocky*, *On a Clear Day*, *Sister Act*, *How To Succeed...*, *Elf*, *Young Frankenstein*, *Tarzan*, *Dracula*, *Thoroughly Modern Millie*, *The Producers*, *Seussical*, *Music Man*, *Fosse*, *King David*, *Big*, *Damn Yankees*, *Gentlemen Prefer Blondes*. **Off-Broadway:** *Carrie* (MCC); *Weird Romance* (WPA); *Jack's Holiday* (Lambs Theater); *Johnny Pye* and *the Foolkiller* (Lambs Theater); *The Gifts of the Magi* (Lambs Theater); *Godspell* (Lambs Theater); *A Christmas Carol* (Madison Square Garden); and the Radio City Music Hall Christmas Spectacular. **Regional:** *Little Dancer* (Kennedy Center); *Girlstar* (Signature Theater); *Roman Holiday* (Guthrie Theater); *Calvin Berger* (George Street Playhouse); *Minsky's* (Ahmanson Theater); *An American In Paris* (Alley Theater); *Captains Courageous* (Fords Theater); *I Sent A Letter To My Love* (North Shore Music Theater); *Paramour* (Old Globe); *Opal* (George Street Playhouse). **Film:** *Hail, Caesar!*; *Frozen*; *Winnie the Pooh* (2010); *Captain America*; *Nine*; *The Producers*; *Chicago*; *Mulan*; *Anastasia*; *Bartok The Magnificent*; *Pocahontas*; *Lincoln*; *Superstar*. **Television:** *Crazy Ex Girlfriend*, *Galavant*, *Peter Pan Live*, *The Sound Of Music Live*, *Scrubs*, *Smash*, *Cinderella*, *Annie*, *Geppetto*, *South Pacific*, the Oscars, the Tonys, the Emmys, the Kennedy Center Honors. **Education:** University of Rochester/Eastman School of Music BA 1986. **Awards:** 1999 Tony Award for *Fosse*, 2001 Tony Award and Drama Desk Award for *The Producers*, 2002 Tony Award and Drama Desk Award for *Thoroughly Modern Millie*. 3 additional Tony Award nominations, and 4 additional Drama Desk nominations. Grammy Award nomination.

## CLAUDIA HILL-SPARKS

### VOCAL & TEXT COACH

**Hartford Stage:** *Romeo & Juliet*; *Kiss Me, Kate*; *Hamlet*; *Ether Dome*; *Macbeth*; *La Dispute*; *Twelfth Night*; *Breath & Imagination*; *The Tempest*. **Broadway:** *Dance of the Vampires*. **Off-Broadway:** *Songbird* (59E59 Theaters); *An Octoroon* (Soho Rep/Theater for a New Audience); *The Merchant of Venice* (Theatre for a New Audience); *A Midsummer Night's Dream* (The Public Theater, Shakespeare in the Park); *Polish Joke* (The Manhattan Theatre Club); *Time and the Conways* (Epic Theater Ensemble); *Stone Cold*, *Dead Serious* (The Edge Theater Company). **Regional:** 2008–2010 Summer Shakespeare Festivals, The Old Globe; over 80 productions as Resident Vocal Coach for The Old Globe; Numerous National Tours for Networks Presentations; Barrington Stage Company; Long Wharf Theatre; Huntington Theater Company; North Shore Music Theater; American Players Theatre; Chautauqua Theater Company. **Television:** Dialect Coach for Richard Easton as Ben Franklin for PBS. **Faculty:** The Old Globe/USD MFA Professional Actor Training Program; Boston University BFA Professional Actor Training Program; The American Academy of Dramatic Arts; The Wilma Theater. **Education:** MFA in Acting, Temple University. More information at [www.claudiahillsparks.com](http://www.claudiahillsparks.com).

## JEFF BARRY

### FIGHT DIRECTOR

**Hartford Stage:** *Peter and Jerry*. **Broadway:** *Superior Donuts*, *A Gentleman's Guide To Love And Murder*, *Fish In The Dark*. **Off-Broadway:** The Women's Project, The Cherry Lane, Theatre For A New Audience. **National Tours:** *A Gentleman's Guide To Love And Murder*. **Regional:** Virginia Stage Company, Pennsylvania Shakespeare Festival, Dorset Theatre Festival, Huntington Theatre Company. **Film:** *How We Got Away With It*, *Occupy, Texas*, *Everybody Knows This Is Nowhere* (2017), *Bridesburg* (2017). **Television:** *Guiding Light*. **Education:** Yale School of Drama.

## DAVID CHASE

### DANCE MUSIC ARRANGER

**Hartford Stage:** Debut. **Broadway:** 30 Broadway productions as Dance Arranger, Music Director and/or Music Supervisor. Recent shows include *Tuck Everlasting*, *Finding Neverland*, *Cinderella*, *Anything Goes*, *Evita*, *Billy Elliot* and *How to Succeed...* **Currently:** Music Director for *The King and I* at the Lyric Opera of Chicago; Music Supervisor and Arranger for *My Paris* at The Long Wharf. **Also:** numerous arrangements for The Boston Pops (including *The Twelve Days of Christmas*), the BBC Concert Orchestra, The Kennedy Center Honors, and Essential Voices USA. Grammy nomination as producer of the cast album for *Nice Work If You Can Get It*. **Television:** Music Director and Arranger for *The Sound of Music Live!* and *Peter Pan Live!* (Emmy nominations for both). **Education:** Harvard biology degree.

## TELSEY + COMPANY

### CASTING

**Broadway/Tours:** *Paramour*, *Tuck Everlasting*, *Waitress*, *American Psycho*, *Fiddler on the Roof*, *The Color Purple*, *On Your Feet!*, *Hamilton*, *Something Rotten!*, *An American in Paris*, *Finding Neverland*, *The King and I*, *Kinky Boots*, *Wicked*, *If/Then*, *The Sound of Music*, *Newsies*, *Motown*, *Rock of Ages*. **Off-Broadway:** Atlantic, MCC, Signature. **Regional:** Alliance, Goodman, La Jolla, Long Wharf, New York Stage and Film, Old Globe, Paper Mill, Williamstown. **Film:** *Whiskey Tango Foxtrot*, *Tallulah*, *The Intern*, *Into the Woods*. **Television:** *The Family*, *Grease Live!*, *The Wiz Live!*, *Flesh and Bone*, commercials. [www.telseyandco.com](http://www.telseyandco.com)

## STEVEN MALONE

### ASSOCIATE MUSIC DIRECTOR

**Hartford Stage:** Debut. **Professional:** Most recently the music director for The Old Globe's production of Stephen Flaherty and Chris Gattelli's *In Your Arms*. Associate music director/conductor for the Broadway production of *Newsies* and has additionally worked with composer Alan Menken on *The Hunchback of Notre Dame*, *Aladdin*, *Sister Act*, *Leap of Faith*, *The Little Mermaid*, and Disney's upcoming live-action film of *Beauty and the Beast*. Assistant music director for NBC's live telecast of *Peter Pan*; children's vocal conductor for *The Sound of Music Live!*

## ADAM CATES

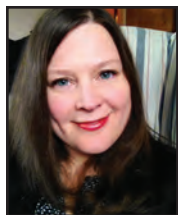
### ASSOCIATE CHOREOGRAPHER

**Hartford Stage:** *Kiss Me*, *Kate*. **Broadway/National Tour:** *A Gentleman's Guide to Love & Murder*, *Anything Goes*, *Doctor Dolittle* with Tommy Tune, *Wizard of Oz*. **Television:** *90210*, *Live From Lincoln Center*. **Regional:** Goodspeed, Paper Mill Playhouse, The Old Globe, Seattle Opera, Santa Fe Opera. **As choreographer:** *The Little Mermaid* (Arkansas Rep); *Maria de Buenos Aires* (Anchorage Opera); *Gypsy* (New London Barn Playhouse); *The Magic Flute* & *Eugene Onegin* (Juilliard Opera). **Next:** *Beauty & the Beast* (Music Theatre Wichita). [www.adamcates.com](http://www.adamcates.com)

## RANDY COHEN

### KEYBOARD PROGRAMMER

**Hartford Stage:** Debut. **Broadway:** *Hamilton*, *Color Purple* (2015), *Bright Star*, *On Your Feet*, *Book of Mormon*, *Kinky Boots*, *Allegiance*, *Amazing Grace*, *Dr. Zhivago*, *It Shoulda Been You*, *Side Show*, *On The Town*, *Cabaret*, *Bullets Over Broadway*, *If/Then*, *Rocky*, *Soul Doctor*, *The Nance*, *Pippin*, *Motown*, *Hands on a Hardbody*, *Mystery of Edwin Drood*, *Annie*, *Chaplin*, *Bring It On*, *Nice Work If You Can Get It*, *Peter and the Starcatcher*, *Bonnie and Clyde*, *Lysistrata Jones*, *Godspell*, *Follies*, *Everyday Rapture*, *South Pacific*, *Grease*, *Gypsy*, *Cry-Baby*, *13*, *Finian's Rainbow*, *Women On The Verge*, *Guys and Dolls*, *American Idiot*, *La Cage Aux Folles*, *How To Succeed*, *West Side Story*, *Pal Joey*, *Sondheim on Sondheim*, *People In The Picture*, *Wonderland*, *9 to 5*, *In The Heights*, *Rock of Ages*, *Young Frankenstein*, *Elf*, *Glory Days*, *Company*, and *Grey Gardens*. **TV:** Keyboard and Accordionist for *Sesame Street*. **Education:** Oberlin Conservatory.



## ELIZABETH WILLIAMSON

### DRAMATURG | ASSOCIATE ARTISTIC DIRECTOR

Elizabeth Williamson was Hartford Stage's Senior Dramaturg & Director of New Play Development from 2012-15. Before joining Hartford Stage, Williamson served as Associate Artistic Director and Literary Manager for Pioneer Theatre Company in Salt Lake City, Utah. A dramaturg, director, producer, and translator, she has also worked with About Face Theatre, the American Conservatory Theater, Aurora Theatre, the Bay Area Playwrights Festival, Berkshire Opera, Court Theatre, HERE Arts Center, the La Jolla

Playhouse, Lorin Maazel's Castleton Festival, the Magic Theatre, Steppenwolf, Theatre de la Jeune Lune, and the Williamstown Theatre Festival. Williamson has developed new work with Brooke Berman, Bill Cain, Sheila Callaghan, Robert Freedman and Steven Lutvak, Kyle Jarrow, Julie Jensen, Kimber Lee, Matthew Lopez, Wendy MacLeod, T.D. Mitchell, Peter Morris, Brighde Mullins, Janine Nabers, Dan O'Brien, Dominique Serrand and Steve Epp, Octavio Solis, Bess Wohl, Lauren Yee, and Mary Zimmerman. Translations include Marivaux' *La Dispute* (co-adapted with Darko Tresnjak) at Hartford Stage, Michel Azama's *The Life and Death of Pier Paolo Pasolini* (with Nicholas Elliott, Act French Festival, New York), Michel Azama's *Airlock* (with Nicholas Elliott) and Michel Azama's *Night Zoo*. Education: Bachelor of Arts in Theatre Directing and Comparative Literature, Bennington College; Master's in European Literature, Oxford University; trained at the École Jacques Lecoq. Williamson received an NEA Fellowship in Literary Translation in 2007 and is a member of the Lincoln Center Theater Directors Lab and the Literary Managers and Dramaturgs of the Americas.

## BONNIE PANSON

### PRODUCTION STAGE MANAGER

**Hartford Stage:** Debut. **Broadway:** *Gigi*, *Bring It On*, *Spider-Man*, *Chicago*, *Dance of the Vampires*, *Seussical*, *The Civil War*, *Bring in' da Noise/Funk*, *The Tempest*, *Kiss of the Spider Woman*, *The Kentucky Cycle*, *Starlight Express*, *The Odd Couple* (female version), *The Glass Menagerie*, *The Pirates of Penzance* (and about a dozen others). **National Tours:** *Evita*, *Bring It On*. **Off-Broadway:** *Trip of Love*, *Last Five Years* (Second Stage). **Regional:** *Amelie* (Berkeley Rep); *South Pacific*, *Addams Family* (MUNY). **Professional:** Adjunct Professor at Columbia University School of the Arts. Proud mother of Jenny Spicola, starting grad school at University of Wisconsin.

## TREY JOHNSON

### STAGE MANAGER

**Hartford Stage:** Debut. **Broadway:** *Les Misérables*, *Gigi*, *A Streetcar Named Desire*. **National Tour:** *Evita*, *Jigsaw Jones*. **Workshops/Readings:** *Fun Home*, *Songbird*, *Fortress of Solitude*, *Superfly*, *Yank!* **Off-Broadway:** *The Last Five Years*, *Play Dead*, *The Broken Heart*. **Regional:** *Shout!*, *Tuesdays with Morrie*, *Fiddler on the Roof* (St. Michael's Playhouse); *Music Man*, *Les Misérables*, *Distracted*, *A Midsummer Night's Dream*, *White Christmas*, *Bat Boy: The Musical*, *The Heart's Desire*, *Urinetown*, *Kiss Me, Kate* (PCPA Theaterfest). **Education:** Northern Arizona University.

## KELLY HARDY

### ASSISTANT STAGE MANAGER

**Hartford Stage:** *A Christmas Carol—A Ghost Story of Christmas*, *The Underpants*. **Broadway:** *The Real Thing*. **New York:** Lincoln Center - LCT3, The Public, Theatre for a New Audience, Working Theatre, Rattlestick Playwrights Theatre, The Actors Company Theatre. **Regional:** Long Wharf Theatre, La Jolla Playhouse, Bard SummerScape, Trinity Repertory Company, North Coast Repertory Theatre, Bucks County Playhouse. **International:** Royal College of Music, London; Shakespeare's Globe, London. **Education:** UC San Diego.

Come to one of the best universities in New England

# CENTRAL CONNECTICUT STATE UNIVERSITY

## CCSU SUCCESS

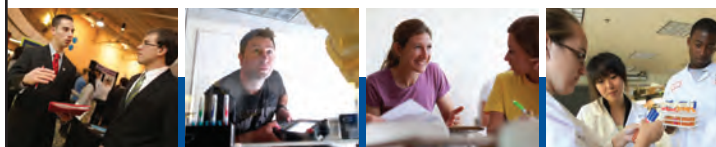
SUCCESS BEGINS WITH CCSU



- Chosen by Princeton Review as one of the "Best Northeastern Colleges" and an "America's Best Value College"
- Honored by Octameron Associates as a "Great College for the Real World"
- Over 100 excellent academic programs
- Exciting Division I athletics



[www.ccsu.edu/facebook](http://www.ccsu.edu/facebook)



[www.ccsu.edu](http://www.ccsu.edu)

# Innovation

*steeped in*

# Tradition

The Jewish Community Foundation of Greater Hartford brings together innovation and tradition to transform our world.



Zachs Campus | 333 Bloomfield Ave., Ste. D | West Hartford, CT 06117  
860-523-7460 (ph) | 860-231-0576 (f) | [jcfhartford.org](http://jcfhartford.org)





The cast of *Kiss Me, Kate* (2015). Photo by T. Charles Erickson.

Now in its 52nd year, Hartford Stage is under the leadership of Artistic Director Darko Tresnjak and Managing Director Michael Stotts. One of the nation's leading resident theatres, Hartford Stage is known for producing innovative revivals of classics and provocative new plays and musicals, including 70 world and American premieres, as well as offering a distinguished education program, which reaches more than 20,000 students annually.

Since Tresnjak's appointment in 2011 the theatre has presented the world premieres of *A Gentleman's Guide to Love and Murder* on Broadway, winner of four 2014 Tony Awards, including Best Musical and Best Direction of a Musical by Tresnjak; Quiara Alegria Hudes' *Water by the Spoonful*, winner of the 2012 Pulitzer Prize for Drama; *Breath & Imagination* by Daniel Beaty; Big Dance Theatre's *Man in a Case* with Mikhail Baryshnikov; and *Reverberation* by Matthew Lopez.

Hartford Stage has earned many of the nation's most prestigious awards, including the 1988 Tony Award for Outstanding Regional Theatre. Other national honors include Outer Critics Circle, Drama Desk, OBIE, and New York Critics Circle awards. Hartford Stage has produced nationally renowned titles, including the New York transfers of *Enchanted April*; *The Orphans' Home Cycle*; *Resurrection* (later retitled *Through the Night*); *The Carpetbagger's Children*; and *Tea at Five*.

The leading provider of theatre education programs in Connecticut, Hartford Stage's offerings include student matinees, in-school theatre residencies, teen performance opportunities, theatre classes for students (ages 3-18) and adults, afterschool programs and professional development courses.



## MICHAEL STOTTS MANAGING DIRECTOR

Michael Stotts is in his 10<sup>th</sup> year as Managing Director of Hartford Stage. Recent accomplishments include the multi-year, expansion and renovation of the Stage's theatre facility, an investment of over \$14 Million. With Darko Tresnjak, Mr. Stotts produced *A Gentlemen's Guide to Love and Murder* in 2012 at Hartford Stage. The show moved to Broadway and won the 2014 Tony Award for Best Musical, and is currently on national tour. Other notable

shows include *Man in a Case* starring Mikhail Baryshnikov, which recently completed a national tour; and the Pulitzer Prize-winning play, *Water by the Spoonful* by Quiara Alegria Hudes. In 2010, in partnership with Michael Wilson, he produced Horton Foote's *The Orphans' Home Cycle* which enjoyed a celebrated run at the Signature Theatre in New York, and won the Drama Desk, Lucille Lortel Award, Outer Critics Circle Awards, among others. In 2013, Mr. Stotts spearheaded the acquisition of the Hartford Children's Theatre education programs and the integration of those programs into the Hartford Stage Studio program. Since 2006, he has guided the growth of the Hartford Stage education programs. Today the theatre serves over 19,000 students throughout the State. During his three-year tenure as Managing Director at Long Wharf Theatre in New Haven, Mr. Stotts produced a significant number of new plays including works by Paula Vogel, Craig Lucas, James Lapine and Julia Cho, among others. *Sixteen Wounded* by Eliam Kraiem moved to Broadway in 2004, and Cho's *BFE* and Lapine's *Fran's Bed* with Mia Farrow subsequently transferred to Off-Broadway's Playwrights Horizons. Prior to Long Wharf he served as Managing Director at George Street Playhouse in New Brunswick, New Jersey, and for nine years he served in the same capacity at the Shakespeare Theatre of New Jersey in Madison, New Jersey, where he successfully initiated and managed a capital campaign to build the F.M. Kirby Shakespeare Theatre, which opened in 1998. Mr. Stotts began his professional career at the Manhattan Theatre Club where he served in a number of management capacities from 1986–1990. Mr. Stotts currently serves on the boards of Hartford Performs and Billings Forge Community Works. He was a co-founder and President of the Connecticut Arts Alliance, a statewide arts advocacy organization; he continues to serve on that board. In 2005, Mr. Stotts was honored with a Distinguished Advocate Award from the Connecticut Commission on Culture and Tourism, and in 2011 he received the Commission's Elizabeth L. Mahaffey Arts Administration Fellowship. He is originally from Calgary, Alberta.

**KITCHEN & BATH**  
DESIGN+CONSTRUCTION  
(860) 953-1101 | kb-dc.com



## OFFICERS

**Sue Ann Collins\***

President

**Robert V. Lally\***

Vice President

**John L. Sennott, Jr.\***

Treasurer

**David R. Jimenez\***

Secretary

## GOVERNING DIRECTORS

R. Kelley Bonn  
Kimberley L. Byrd  
Richard G. Costello\*  
Carrie Hammond  
Sharon Jepson  
Sibongile Magubane  
Barri Marks  
Lynda B. Moecker  
Joshua R. Newton  
Charlie Ortiz  
Don C. Sikes  
Judith E. Thompson  
Patty Willis

Patti Broad\*  
Marla J. Byrnes  
Devon C. Francis  
Barbara Hennessy  
Erin Keith  
Amy Leppo Mandell  
Judith C. Meyers\*  
Dawn C. Morris  
Wilfred R. Noel\*  
Esther A. Pryor  
Bruce Simons\*  
Brooke Whittemore  
C. Robert Zelinger

Michele B. Bush  
Susan J. Copeland  
Renata Hayes\*  
Jeffrey S. Hoffman\*  
John B. Lynch, Jr.  
Margaret Marchak  
Paul Mitchell  
Michael D. Nicastrò  
Eric D. Ort  
Christopher J. Rixon  
Peter L. Tedone  
Sherwood S. Willard

## LIFE DIRECTORS

Maxwell M. Belding  
Beverly P. Greenberg  
Christina B. Ripple\*

George L. Estes III  
Janet M. Larsen  
Anne H. Rudder

Arnold C. Greenberg  
Belle K. Ribicoff  
Linda Fisher Silpe

## HONORARY DIRECTORS

John Alves  
Sara Marcy Cole  
Michael Grunberg  
Roger Loeb  
Tom Richards

Margaret B. Amstutz  
Susan G. Fisher  
George A. Ingram\*  
Marjorie E. Morrissey  
Barbara Rubin  
Linda Cheverton Wick

David Carson  
Andrew M. Fleischmann  
Katherine Lambert  
Robert A. Penney  
Allan B. Taylor

## PAST PRESIDENTS

Jill Adams\*  
David W. Clark, Jr.  
Thomas J. Groark, Jr.  
David M. Klein  
Thomas D. Lips  
Christina B. Ripple\*

Joel B. Alvord  
Ellsworth Davis\*  
John W. Huntington\*  
Edward Lane-Reticker\*  
Scott McAlister\*  
Deanna Sue Sucsy  
Peter R. Wilde\*

Paul L. Bourdeau  
Elliot F. Gerson  
Walter Harrison  
Janet M. Larsen  
Tuck Miller  
Jennifer Smith Turner

## EX OFFICIO DIRECTORS

Darko Tresnjak  
*Artistic Director*

Michael Stotts  
*Managing Director*

John B. Larson  
*Congressional Representative  
1st District of Connecticut*

Dannel P. Malloy  
*Governor,  
State of Connecticut*

Luke Bronin  
*Mayor,  
City of Hartford*

\*Members of the Executive Committee    + deceased

## Darko Tresnjak *Artistic Director\**

(\*position permanently endowed by Janet S. Suisman)

### ARTISTIC

Elizabeth Williamson,  
*Associate Artistic Director*

Rachel Alderman,  
*Artistic Associate*

Christina Anderson,  
*Aetna New Voices Fellow*

*Writers Currently Under Commission:*  
Luis Alfaro, Marcus Gardley,  
Kimber Lee, Matthew Lopez,  
Janine Nabers, Will Power,  
Bess Wohl, Craig Wright

### ADMINISTRATION

Emily Van Scoy, *General Manager*

Stacie J. Snyder,  
*Assistant General Manager*

Scott Bartelson, *Management Associate*

Sara Walnum, *Business Manager*

Cheryl Winter, *Bookkeeper*

### DEVELOPMENT

Antay Bilgutay, *Director of Development*

Jennifer Crookes Carpenter,  
*Events Manager*

Casey Grambo, *Development Manager*

Jim Morgan, *Institutional Giving Manager*

Peter Carey, *Individual Giving Associate*

### EDUCATION

Jennifer Roberts, *Director of Education*

Nina Pinchin, *Associate Director of Education*

Robert Reader,  
*Education Programs Manager*

Aurelia Clunie,  
*Education Associate for Student Audiences*

Ayla Davidson,  
*Education Associate for School Programs*

Emely Larson, *Studio Manager*

Erin Frederick, *Education Enrollment  
and Marketing Coordinator*

Krista DeVellis, *Resident Teaching Artist*

### 2015-2016 APPRENTICES

Abigail George,  
*Arts Administration Apprentice*

Sam French, *Artistic Apprentice*

Fiona Kyle, *Artistic Apprentice*

Joseph Musgrove, *Costume Apprentice*

Maggie Greene, *Development Apprentice*

Andy Germuga,  
*Morningstar Education Apprentice*

Cassandra Spadory,  
*Morningstar Education Apprentice*

Sean Byrne, *Marketing Apprentice*

Lyndsey Schrader,  
*Production/Company Management Apprentice*

Joe Dotts, *Properties Apprentice*

Chelsey Erskin, *Scenic Arts Apprentice*

### PRODUCTION

Bryan T. Holcombe, *Production Manager*

Amy Palmer, *Associate Production Manager*

Samantha Donnelly, *Company Manager*

Chandalae Nyswonger,

Katy Persutti, *Production Assistants*

### Set Construction & Scenic Art

Aaron D. Bleck, *Technical Director*

Mike Beschta, *Assistant Technical Director*

Christopher Nelson, *Master Carpenter*

Kevin DeChello, Ian Sweeney,  
*Carpenters*

Curt Tomczyk, *Charge Scenic Artist*

Nathalie Schlosser, *Scenic Artist*

Carrie Peters, *Stage Carpenter*

### Costumes & Wardrobe

Blair Gulleddge, *Costume Shop Manager*

Britt Watts, *Costume Shop Assistant*

B.W. Sellers, *Draper*

Aryn Murphy, *First Hand*

Erica Giles, *Second Hand*

SB Parks, *Costume Crafts*

Kalyn Lummis, *Wardrobe Supervisor*

Emma Tremmel, *Wig/Wardrobe*

### Properties

Erin Keller, *Props Master*

Sara Morand, *Assistant Props Master*

### Lighting

Aaron Hochheiser, *Master Electrician*

Jackie Hecker, *Assistant Master Electrician*

### Sound

Lucas Clopton,  
*Audio/Video Supervisor*

Darren Alley, *Audio/Video Engineer*

### FOR THIS PRODUCTION

John Cowles, *Draper*

Pat Van Horn, *First Hand*

Tiffany Delligatti, Jennifer Tellier,  
*Stitchers*

Damian Dominguez, *2nd Design Assistant*

Emily Baldwin, *Stitcher, Wig Run Crew*

Emma Mohrmann, Ashley St. Pierre,  
*Wardrobe Crew*

Marissa Kulp, *Wig Run Crew*

Nicole Lembo, *Costume Intern*

Christopher Bell,  
*Electrics Department Assistant*

Jana Hoglund, *FOH Audio Engineer/AI*

Darren Alley, *Assistant Audio & Video*

*Supervisor/A2*

Alexandra Lenihan, *Video Operator*

Dylan Amick, *Video Engineer*

Gino Costabile, Alexandra Krauth,

Katie Woodward, Athena Ellis,

*Props Artisans*

Kurt Fenster, Matt Hennessey,

Melissa Nelson, *Carpenters*

Martina Rodriguez, Katie Woodward,

*Painters*

Brianne Bolante, Gino Costabile,

Paul Dente, Athena Ellis, *Deck Crew*

Lindsay Duval, Todd Kelmar,

Chris Lubik, *Spotlight Operators*

### Legal Counsel for Anastasia

David H. Friedlander, Esq.

## Michael Stotts *Managing Director*

### MARKETING, SALES & COMMUNICATIONS

David Henderson, *Director of  
Marketing, Sales & Communications*

Todd M. Brandt, *Associate Director of  
Marketing, Sales & Communications*

Liss Couch-Edwards,  
*Marketing & Graphic Design Coordinator*

Tim Kendrick,

Darryl VanOudenohve,  
*Data Systems Managers*

Charles MacNaughton,  
*Digital Media Manager*

Theresa M. MacNaughton,

*Community Engagement Associate*

T. Charles Erickson,

*Company Photographer*

### Sales Center

Mike D'Avirro, *Call Center Manager*

Darlene Herrick,  
*Administrative Assistant / Sales Representative*

*Sales Center Representatives:*

Todd Merrell, Linda Young

### Patron Services

Anthony Bell,

*Box Office Manager*

Alexandra Fischbein,  
*Subscriptions Manager*

Lisa Rizzo, Molly Sullivan,

*Box Office Supervisors*

Sierra Vazquez,

*Senior Customer Service Representative*

*Customer Service Representatives:*

Damian Dominguez,

Emily Qualmann,

Ashley St. Pierre,

Margaret Vaughan,

### House Management

Lew Michaels,

*Associate Director of Theatre Operations*

Margie Glick, Jeff Lagasse,

*House Managers*

*House Operations Staff:*

Brittany Boncek, Sean Byrne,

Bruce Catania, Sam Chiasson,

Sheznarda Flores, Lindsey Hoffman,

Elizabeth Malvo, Andrew Mentus,

Cady Michaels, Joseph Musgrove,

Joan Ouellette, Tanya Rivera,

Cassandra Spadory

### Volunteer Advisory Board

Ann Cooke, Doug Cooke,

Jill Dugas, Carol Durant-Holtzclaw,

Pat Tyson, Gayle Barrett, Michael

Brezel, Martha Schwartz, Bobbie

Werner, Daniel Fox, Bob Katz

### 2010 RENOVATION ARCHITECT

Mitchell Kurtz Architect PC

### 2014-2015 RENOVATION

ARCHITECT

JCJ Architecture

### CONSTRUCTION MANAGER

Bartlett, Brainard and Eacott

### OWNER'S REPRESENTATIVE

Construction Solutions Group



# BREAKDANCING SHAKESPEARE CELEBRATES 10<sup>TH</sup> ANNIVERSARY SEASON WITH ROMEO AND JULIET

By Erin Frederick, Education Enrollment and Marketing Coordinator

This summer Hartford Stage's popular Breakdancing Shakespeare (BDS) program will celebrate its 10<sup>th</sup> anniversary with a brand new, edge-of-your-seat production of *Romeo and Juliet*. First performed during Breakdancing Shakespeare's inaugural season in 2006, this all-new production, directed by Nina Pinchin and choreographed by Brandon Coulotte, promises to imbue Shakespeare's classic tale with the electricity and youthful passion of modern hip hop.

Created in 2006 in conjunction with the Greater Hartford Arts Council's award-winning Neighborhood Studios program, Breakdancing Shakespeare is a paid, six-week summer apprenticeship for students ages 14 through 18 from the Greater Hartford area. Over the course of the program, students learn techniques of breakdancing, physical and vocal characterization, movement, and interpretation of classical text. They also take master classes with guest artists, developing skills related to the production. Past master classes have included mime, magic, mask-making, stage combat and color guard. The students use these skills to put a modern twist on a classic Shakespearean play which culminates in an exciting, high-energy public performance geared toward making Shakespeare accessible to audiences of all ages.

"It presents Shakespeare in a way that I don't think many other programs offer," says Farmington's Danielle Hoffman, who played Gertrude in last year's BDS production of *Hamlet*. "Besides just the dancing... it also places Shakespeare in a more modern context that I think really resonates in a modern world."

Daisy Infantas, a Hartford resident who played Ophelia in last year's production, summed up the program like this: "It's by far the best thing that I have ever been a part of. It's challenging... but it is FUN."

Breakdancing Shakespeare's *Romeo and Juliet* will present three public performances on the Main Stage at Hartford Stage, on August 11, 12 and 13. Tickets will go on sale in July.



## Short Takes: News from Hartford Stage

### *The Life of a Costume*

Come and explore our latest exhibition, *The Life of a Costume*, upstairs in the John and Kelly Hartman Foundation Lobby. Featuring two different costumes from *Anastasia*, you'll see exactly how our talented team of costume artisans created these pieces from start to finish.

### *Hartford Stage Alums in New CPTV Series*

In *The Cobblestone Corridor*, a group of student newspaper staffers at Alfred Pierce Preparatory School investigate the institution's most exciting and forbidden mysteries. With quick wit and a dose of nostalgia, *Cobblestone* explores the definitions of truth, progress and tradition. The series premieres this October on CPTV and stars Hartford Stage favorites Bill Raymond and Michael Bakkensen. HSC alums Erik Bloomquist and Danielle Bonanno also star in and executive produce the series. Dig deeper at [www.CobblestoneCorridor.com](http://www.CobblestoneCorridor.com).



Photos (L to R): Bill Raymond. Michael Bakkensen.

### *Shakespeare in Bloom Soars*

*Shakespeare in Bloom*, Hartford Stage's 2016 gala, raised more than a quarter of a million dollars for artistic and educational programs. Attendees enjoyed *Anastasia* star Christy Altomare making her Hartford debut performing "Journey to the Past" accompanied by Stephen Flaherty.



Photos (clockwise from top right): (L to R) Artistic Director Darko Tresnjak, Gala Co-Chair Joanne Bourdeau, Board President Sue Ann Collins, Gala Co-Chair Chrissie Ripple, Managing Director Michael Stotts; Christy Altomare accompanied by Stephen Flaherty; (L to R) Darko Tresnjak with *Anastasia* authors Lynn Aherns and Stephen Flaherty; guest speaker and Education @ Hartford Stage student, Sebastian Munera. Photos by The Defining Photo.



## Aetna New Voices Fellow: Christina Anderson

A season-long engagement, the Aetna New Voices Fellowship provides an artistic home for important playwrights of diversity and color to develop work and become involved in the ongoing life of Greater Hartford. The residency includes the commissioning of a new play and developmental readings and workshops, working with Hartford Stage's education department, and advancing community development. The 2015-16 Fellow is playwright Christina Anderson.

Anderson's plays include *The Ashes Under Gait City*, *Good Goods*, *Man in Love*, *Blacktop Sky*, *Hollow Roots*, *How to Catch Creation*, and *Drip*. Her work has appeared at The Contemporary American Theatre Festival, Penumbra, Yale Rep, A.C.T., The Public Theatre, Crowded Fire, and other theatres across the country. Anderson received a BA from Brown University and an MFA from the Yale School of Drama's Playwriting Program, and serves as an Assistant Professor of Playwriting at SUNY-Purchase College. She has been recognized with two PoNY (Playwrights of New York) nominations, the Schwarzman Legacy Scholarship, two Susan Smith Blackburn nominations, the Lorraine Hansberry Award (American College Theatre Festival), and a Wasserstein Prize nomination. A 2011 Woursell Prize finalist (University of Vienna), Anderson has held the Lucille Lortel Fellowship at Brown University, the Van Lier Playwriting Fellowship with New Dramatists, and served as the 2011/12 Playwright-in-Residence at Magic Theatre (National New Play Network) and the 2011 National Playwrights' Conference Residency at the Eugene O'Neill Theatre.



Christina Anderson



Quiara Alegría Hudes



Daniel Beaty

### Past Aetna New Voices Fellows

Past Fellows include **Matthew Lopez** (2012-13) whose play *Reverberation* made its world premiere at Hartford Stage in February; **Quiara Alegría Hudes** (2008-09) who won the 2012 Pulitzer Prize for Drama for *Water by the Spoonful*, which premiered at Hartford Stage; and **Daniel Beaty** (2007-08) author of *Breath & Imagination* which premiered at Hartford Stage two seasons ago.



Matthew Lopez

Marking its eleventh year as the sole funder of this essential program, **Aetna, Inc.**, builds healthy communities by promoting volunteerism, forming partnerships, and funding initiatives to improve the quality of life for its employees and customers.

*The Aetna New Voices Fellowship is made possible by*

**aetna** SM

## The Hartt School/Hartford Stage Partnership in Training

Now in its twelfth year, The Hartt School/Hartford Stage Partnership in Training offers a unique alliance of an undergraduate acting conservatory program and a respected professional theatre—one of only two such collaborations in the country. This partnership helps ensure that acting students at the Hartt School receive rigorous training and bring their skills, imagination and intellect to the demands of a professional theatre setting. Hartford Stage staff and guest artists lead classes and workshops and faculty and students appear in Hartford Stage productions. Hartt students have been seen in *The Adventures of Tom Sawyer*, *A Christmas Carol*, *A Midsummer Night's Dream*, *Noises Off!*, *To Kill a Mockingbird*, the *Brand:NEW Festival of New Work*, *Antony & Cleopatra*, *Snow Falling on Cedars*, *The Crucible*, *The Tempest*, *Twelfth Night* and *Hamlet*.



## The University of Massachusetts Graduate Internships at Hartford Stage

Linking one of the most respected graduate programs in theatre with the Tony Award-winning Hartford Stage, the University of Massachusetts Graduate Internships give Master of Fine Arts students in design, directing and dramaturgy the opportunity to work alongside the country's most exciting artists. The Graduate Internships provide a valuable professional testing ground for students and are a natural

complement to the practical, hands-on approach of UMass' graduate program. In turn, Hartford Stage is enriched by the participation of the next generation of theatre artists. UMass students have worked on *Boeing-Boeing*, *Zerline's Tale*, *Gee's Bend*, *Motherhood Out Loud*, *The Adventures of Tom Sawyer*, *Snow Falling on Cedars*, *The 39 Steps*, *Macbeth*, *Vanya and Sonia and Masha and Spike*, and *Hedda Gabler*.



**From Top:** Hartt School student Ben Cole in *The Tempest*. • Nafe Katter and Hartt School student Douglas Lyons in *To Kill a Mockingbird*. • Hartt Students Kendra Underwood and Michael Gregory in *Antony & Cleopatra*.

**UNIVERSITY  
OF HARTFORD**  
THE HARTT SCHOOL

**UMASS**  
 *theater*  
www.umass.edu



## 2015/2016 SEASON PRODUCTION SPONSORS

### AN OPENING IN TIME

PRODUCTION SUPPORT PROVIDED BY  
Federman, Lally, & Remis LLC

RESTAURANT PARTNER  
Salute

### REAR WINDOW

PRODUCTION SPONSOR  
Bank of America

The Edward C. and Ann T. Roberts Foundation

RESTAURANT PARTNER  
Trumbull Kitchen

### A CHRISTMAS CAROL

EXCLUSIVE PRESENTING SPONSOR  
United Technologies Corporation

### THE BODY OF AN ARMEMAN

RESTAURANT PARTNER  
Feng

### ROMEO & JULIET

PRESENTING SPONSOR  
The Hartford

### PRODUCTION SPONSOR

*Romeo & Juliet* is part of Shakespeare for a New Generation, a national program of the National Endowment for the Arts in partnership with Arts Midwest

### ASSISTING PRODUCTION SPONSORS

Federman, Lally, & Remis LLC  
Hinckley Allen

RESTAURANT PARTNER  
Max Catering & Events

### HAVING OUR SAY

PRINCIPAL SPONSOR

Travelers

PRODUCTION SPONSOR

Robinson + Cole

### ASSISTING PRODUCTION SPONSOR

The Doris & Simon Konover Family Foundation

### PRODUCTION SUPPORT PROVIDED BY

The Hartford Foundation for Public Giving,  
as recommended by Jackson-Batchelder  
Family Fund

RESTAURANT PARTNER

The Russell

### ANASTASIA

PRESENTING SPONSOR

The John and Kelly Hartman Foundation

PRINCIPAL SPONSOR

Radisson

### PRODUCTION SPONSORS

The Cheryl Chase & Stuart Bear  
Family Foundation

The Katharine K. McLane & Henry R. McLane  
Charitable Trust

The Saunders Foundation

### PRODUCTION SUPPORT PROVIDED BY

Susan R. Block

*Anastasia* is part of ArtWorks,  
a program at the National  
Endowment for the Arts

## SPOTLIGHT SPONSORS

Cummings & Lockwood

Jackson Lewis LLP

Milliman

## AETNA NEW VOICES FELLOWSHIP

Aetna

## NEW PLAY DEVELOPMENT

Burry Fredrik Foundation

The Lucille Lortel Foundation

The Harold & Mimi Steinberg Charitable Trust  
Virginia B. Toulmin Foundation

## AWARD-WINNING EDUCATION PROGRAMS

The Beatrice Fox Auerbach Foundation Fund  
at the Hartford Foundation for Public Giving, as  
recommended by Beatrice Koopman

The Beatrice Fox Auerbach Foundation Fund  
at the Hartford Foundation for Public Giving, as  
recommended by Linda and David Glickstein  
City of Hartford

Stanley D. and Hinda N. Fisher Fund at the  
Hartford Foundation for Public Giving

The Foulds Family Foundation

The Ellen Jeanne Goldfarb Memorial  
Charitable Trust

Greater Hartford Arts Council

The Hartford

Hartford Foundation for Public Giving  
Hartford Foundation for Public Giving, as  
recommended by the Morningstar Fund  
LEGO Community Fund U.S.

Lincoln Financial Group

The George A. & Grace L. Long Foundation

Andrew J. & Joyce D. Mandell

Wil Noel



NORTHEAST  REGIONAL<sup>SM</sup>

BOOK EARLY AND SAVE 25% OR MORE\*

 AMTRAK

\*Restrictions apply. Amtrak and Northeast Regional are registered service marks of the National Railroad Passenger Corporation.

NewAlliance Foundation Inc.  
RBC Wealth Management  
The Charles Nelson Robinson Fund  
SBM Charitable Foundation, Inc.  
Simsbury Bank  
Theatre Forward  
Travelers  
Watkinson School  
Wells Fargo  
Michael S. Wilder

## COMMUNITY OUTREACH & ACCESSIBILITY

The J. Walton Bissell Foundation  
Eugene G. & Margaret M. Blackford  
Memorial Fund  
Burry Fredrik Foundation  
The Beatrice Fox Auerbach Foundation Fund  
at the Hartford Foundation for Public Giving, as  
recommended by Harry Solomon  
Esther A. Pryor  
Don C. Sikes  
Tremont Public Advisors  
Webster Bank  
Sherwood & Maggie Willard

## OPERATING SUPPORT

Acorn Alcind Foundation  
Aetna  
AmazonSmile Foundation  
The William H. and Rosanna T. Andrulat  
Charitable Foundation  
City of Hartford  
Connecticut Department of Economic &  
Community Development  
CT Humanities  
The Barnes Group  
Barnes & Noble  
BlumShapiro  
Burry Fredrik Foundation  
The Richard P. Garmany Fund at the  
Hartford Foundation for Public Giving  
Greater Hartford Arts Council  
The Hartford  
Hartford Choral  
Hartford Foundation for Public Giving  
The Hartford Stage Fund at the Hartford  
Foundation for Public Giving  
Hartford Steam Boiler  
The Hugh M. Joseloff and Helen H. Joseloff Fund  
at the Hartford Foundation for Public Giving  
Elizabeth M. Landon & Harriette M. Landon  
Charitable Foundation  
The Katharine K. McLane & Henry R. McLane  
Charitable Trust  
LAZ Parking  
Milliman  
Morgan Stanley  
Edith W. & John Davis Murphy Fund at  
The Hartford Foundation for Public Giving  
PriceWaterhouse Coopers LLP  
Reid & Riege, P.C.  
The Shubert Foundation  
Theatre Communications Group  
Travelers  
True Benefit  
UBS Financial  
United Technologies Corporation  
Vantis Life Insurance Company  
XL Catlin

## IN-KIND SUPPORT

Jeanine Basinger  
Char W. Beschta  
Mr. Philip Chapman  
Sue Ann Collins  
Robert A. Garrey  
Tom Goz  
The Hartford

Edward Herzig  
Georgette Hyman  
Janice & David Klein  
Lee Kuckro  
Roger & Jane Loeb  
Minuteman Press  
Newman's Own, Inc.  
Wil Noel  
Olaf Granola  
Donna Palmes  
Kathleen J. Peterson  
Ezra & Chrissi Ripple  
Jaime Steffen  
Superseedz  
Darko Tresnjak & Joshua Pearson  
Bonnie Lea Townsend  
Temple Street Townhouses  
Paul Trotta  
Whole Foods Market  
Mark & Patty Willis

## MATCHING GIFTS

Major corporations or their affiliated foundations  
encourage support of Hartford Stage by  
matching their employee's contributions or  
making gifts in recognition of their employees'  
volunteer activities with Hartford Stage. We  
applaud them for their philanthropic policies  
that have benefited the theatre.

Aetna  
Adobe  
America's Charities  
Amica Companies Foundation  
Bank of America  
CIGNA Corporation  
Crum & Forster  
Dominion Foundation  
Fiduciary Investment Advisors  
GZA Geo-Environmental Inc.  
The Hanover Insurance Group Foundation, Inc.  
Hewlett-Packard  
IBM Corporation  
Illinois Tool Works Foundation  
Lincoln Financial Group  
Local Independent Charities  
Phoenix Life Insurance Company  
Prudential  
Stanley Black & Decker  
Travelers  
United Illuminating Company  
United Technologies Corporation  
Voya Foundation  
The Walt Disney Company Foundation  
XL Catlin

## MEDIA SPONSOR

**Hartford Courant**  
celebrating the seventh state history

## PREFERRED CARRIER



## PREFERRED HOTEL



## GENERAL COUNSEL

Jackson Lewis LLP  
MacDermid, Reynolds & Glissman, P.C.  
Robinson & Cole LLP

## THEATRE FORWARD

### CURRENT FUNDERS AS OF AUGUST 2015

Theatre Forward advances  
the American theatre and its  
communities by providing  
funding and other resources to  
the country's leading nonprofit  
theatres. Theatre Forward and  
our theatres are most grateful  
to the following funders for  
earmarking their contributions  
to our educating through theatre  
programs:

#### (\$100,000 OR MORE)

AOL \*  
The Hearst Foundations

#### (\$50,000 OR MORE)

Schlöss Family Foundation  
Wells Fargo

#### (\$25,000 OR MORE)

Buford Alexander and Pamela Farr  
Steven & Joy Bunson  
James S. & Lynne Turley

#### (\$10,000 OR MORE)

Dorfman & Kaish Family Foundation  
Alan & Jennifer Freedman  
Jonathan Maurer and  
Gretchen Shugart  
National Endowment for the Arts  
Lisa Orberg  
Frank and Bonnie Orlowski  
RBC Wealth Management  
George S. Smith, Jr.  
Southwest Airlines \*  
TD Charitable Foundation

#### (\$2,500 OR MORE)

Paula Dominick  
John R. Dutt  
Christ & Anastasia Economos  
Bruce R. & Tracey Ewing  
Jessica Farr  
Mason & Kim Granger  
Colleen & Philip Hempleman  
Howard and Janet Kagan  
Joseph F. Kirk  
Susan & John Major Donor Advised  
Fund at the Rancho Santa Fe  
Foundation  
John R. Mathena  
Daniel A. Simkowitz  
John Thomopoulos  
Isabelle Winkles

#### (\$1,000 OR MORE)

Leslie Chao  
Steven & Donna Gartner  
Ruth E. Gitlin  
Karen A. & Kevin W. Kennedy  
Foundation  
Adrian Liddard  
Robin & Bob Paulson Charitable Fund  
Mark Rosenblatt  
Stephanie Scott

#### \*In-kind support

Theatre Forward supporters are former  
supporters of National Corporate Theatre  
Fund and Impact Creativity.

**Hartford Stage depends on the generosity of thousands of individuals and families each year. It is with immense gratitude that we recognize the following donors to our annual fund.**

**PRODUCER  
(\$25,000+)**

Jill Adams & Bill Knight  
The Cheryl Chase & Stuart Bear  
Family Foundation  
The Beatrice Fox Auerbach Foundation  
Fund at the Hartford Foundation for  
Public Giving, as recommended by  
Beatrice Koopman  
Belle K. Ribicoff  
William & Judith Thompson

**ASSOCIATE PRODUCER  
(\$15,000+)**

Sue A. Collins  
Renata & Gregory Hayes  
Janice & David Klein  
Ezra & Chrissie Ripple

**OVATION SOCIETY  
(\$10,000+)**

Rick & Susan Copeland  
Beverly & Arnold C. Greenberg  
The Burton & Phyllis Hoffman  
Foundation, Inc.  
Jeffrey & Nancy Hoffman  
Chloe & Pearson  
Christopher & Janet M. Larsen  
Jane & Roger Loeb  
Marjorie E. Morrissey  
Mrs. Millard H. Pryor, Jr.  
Esther A. Pryor  
Brooke & Ted Whittemore  
The Zachs Family

**BENEFACTOR  
(\$7,500+)**

Bob & Frankie Goldfarb  
Margaret Marchak & Mark Schreier  
Don C. Sikes  
Bruce & Betsy Simons  
Harris & Linda Simons

**PATRON SOCIETY  
(\$3,500+)**

Peg & Arnold Amstutz  
Anonymous  
Andra Asars  
Maxwell & Sally Belding  
Jay & Jeanne Benet  
Kelley & Walter Bonn  
Paul & Joanne Bourdeau  
Patti & Richard Broad  
Michele Bush & Michael Cooper  
Kimberley & Christopher Byrd  
Marla & John Byrnes  
Sara & David Carson  
Coleman H. & Jo Champlin Casey  
Rick & Jane Costello  
Ms. Sonya Dockett+  
& Mr. Anthony Nwachukwu  
George & Laura Estes  
Robert L. & Susan G. Fisher  
Mr. & Mrs. Thomas M. Francis  
Molly Garrett  
Robert Garrey  
Gary & Alice Gold  
Grunberg Family Foundation  
Doris & Ray Guenter  
Carrie & Jonathan Hammond  
Walter & Dianne Harrison

Barbara & Matthew Hennessy  
George & Helen Ingram  
David & Sharon Jepsen  
David & Beth Jimenez  
Erin & Eddie Keith  
Robert & Anne Lally  
Katherine J. Lambert  
Jo-Anne Leventhal & Jeff Koerner  
John & Beth Lynch  
Amy & Neal Mandell  
Sibongile Mangubane  
Barri Marks & Woody Exley  
Judith Meyers & Dick Hersh  
Tuck & Ki Miller  
Paul & Grace Mitchell  
Dawn & Shannon Morris  
Janet U. Murphy  
Joshua Newton & Phillip Stampul  
Michael & Colleen Nicastro  
Wilfred R. Noel  
Duff Ashmead & Eric Ort  
Anthony & Theodora Pace  
Robert A. & Joan C. Penney  
Tom & Kimberly Richards  
Christopher Rixon  
Barbara Rubin  
Elizabeth Russell  
Susan & Michael Sales  
J. Schermerhorn

The Beatrice Fox Auerbach Foundation  
Fund at the Hartford Foundation for  
Public Giving, as recommended by  
Elizabeth Schiro & Stephen Bayer  
Sherry & Jonathan Schreiber  
Jack & Donna Sennott  
Donald & Linda F. Silpe  
Mr. & Mrs. Nelson A. Sly  
Robin L. Smith  
Sally Speer  
Allan & Sally Taylor  
Peter & Lydia Tedone  
Lynda Moecker Wesnofske  
& Ray Wesnofske  
Nadine Francis West & Arnold B. West  
Linda Cheverton Wick & Walter Wick  
Maggie & Sherwood Willard  
Mark & Patty Willis  
Ruth Ann Woodley & Peter Gourley  
Bob & Tammy Zelinger

**PARTNER  
(\$1,200+)**

Jill & Cecil Adams  
Victoria & Leonard Albert  
Anonymous  
Janet & Sam Bailey  
Cynthia Bates & Jonathan Russell  
David & Kathy Bavelas  
Jim & Joan Betts  
Lynne & Austin Carey  
Mr. & Mrs. T. W. Chabot  
Sandra & Arnold Chace  
Anna+ & David Clark  
Sara M. Cole  
Lois & Bill Druckemiller  
Susan & Stanley Fellman  
Ruth Fitzgerald & Dave Sageman  
Thomas & Eunice Groark  
David & Gail Hall  
Steve & Ellen Harris  
Dennis Hersh

John W. Huntington  
Sam & Polly Huntington  
Claire & Jan Kennedy  
Bernard & Gale Kostko  
Lee G. Kuckro  
Tom & Margah Lips  
Ellen & Allan Mayer  
E. John McGarvey  
Richard McLane  
Carole & Edward T. McPhee Jr.  
Michael & Joan Monts  
Janice Niehaus  
Paul & Arlene Norman  
Russell & Margot S. O'Connor  
Nicholas Ohly & Sara Huntington Ohly  
Charlie Ortiz & Pedro Segarra  
Dr. Andrew Ricci, Jr. & Ms. Jacqueline  
A. Muschiano  
Douglas H. Robins  
Linda & David Roth  
Scott Schooley & Giuliana Musilli  
Walter Smith & William Orsini  
The Carol Sirot Foundation  
Henry "Skip" Steiner  
Marge & Ted Storrs  
Richard & Jane Tedder  
Darko Tresnjak & Joshua Pearson  
Marie-Claire & J. P. van Rooy  
Patricia L. Walker  
Theresa & David Waltz  
Jacqueline R. Werner  
Gary & Diane Whitney  
Sally Williams & William Fuller  
Eric & Jessica Zachs  
Paul B. Zolan & Kate D. Steinway  
Carl Zyskowski

**ADVOCATE  
(\$600+)**

Doug & Sheryl Adkins  
Lawrence+ & Ruth Alexander  
Alvord Family Foundation  
Elisabeth & Bryant Andrews  
Anonymous  
John & Angela Arrington  
Ann Azevedo & Donato T. DiGenova  
Martin & Irene Berman  
Antay Bilgutay & Paul Ditolla  
Stephen & Nancy Bright  
Miriam B. Butterworth  
Eleanor N. Caplan  
Blair Childs  
Candice Chigrotis & Jim Keller  
Jane & Robert Coppa  
Carol & Tim Covello  
Laura & Timothy Curry  
Robert & Deborah Cushman  
Kelly Daly  
Genevieve & Gregory DeSantis  
Kathy & Scott Demsey  
Tom & Tina Dugdale  
R&J Eacott Foundation  
George K. Fenn, Jr.  
Carol Gabrielson Fine  
Vaughan Finn & Steve Nightingale  
Ted & Chris Fishman  
Tom Fogarty  
Joseph & Rose Fortuna  
David B. Foster  
Mr. & Mrs. Jerry Franklin  
Marilda L. Gándara & Scott O'Keefe

# ANNUAL CONTRIBUTORS

Thomas & Cynthia Garten  
 Mrs. Mary P. Gibbons  
 Bob & Peg Giles  
 Lou Golden & Peggy Buchanan  
 Mr. & Mrs. Robert B. Goode  
 David & Cynthia Gordon  
 Jane Cook & Chip Gough  
 Cate & John Grady-Benson  
 Mrs. Harry J. Gray  
 Barbara & Ira Greenbaum  
 Welles & Lillian Guilmartin  
 Joyce P. Hall  
 Irma & Mort Handel  
 Guy & Diane Hayes  
 Marcia & John Hincks  
 Herb & Ilana Hirsch  
 Helen & Don Hughlett  
 Robert D. Jones  
 Drs. Marian Kellner & Timothy  
 McLaughlin  
 Susan Kennedy  
 Mrs. Sidney R. Kennedy Jr.  
 Barbara & Paul Kiefer  
 Maxine Klein & David Zeleznik  
 Tracy Kane & David Tanner  
 Joel M. & Naomi Baline Kleinman  
 Keith & Elaine Knowlton  
 Dave & Ilene Kuhlman  
 Kohn-Joseloff Foundation  
 Andrew & Laura Lieberman  
 Adlyn & Ted Loewenthal  
 Jennifer Lotstein  
 Cynthia K. Mackay  
 Joe Marfuggi  
 Leta Marks  
 Kate & Hugh McLean  
 Luis & Marcy Mejia  
 Steve & Nancy Metcalf  
 Harry & Mary Meyer  
 Tom & Barbara Mitchell  
 Susan B. Monks  
 Frederick More  
 Robert & Marnie Mueller  
 Ms. Michele Mueller  
 Stephen & Ann Marie Mulready  
 Arlene & Daniel Neiditz  
 Patricia Pac & Paul L. LeTendre  
 Mrs. Sidney Pinney  
 Jeffrey & Kristin Pomeroy  
 Ken & MJ Quarti  
 Dr. James & Dr. Luce Reiss  
 Ian & Linda Rickard  
 Laura & John Roche  
 Rosalie Roth  
 Robert K. Schrepf  
 Kate & Andrew Smith  
 Jennifer Smith Turner & Eric Turner  
 Tyler Smith & Lyn Walker  
 Linda Bland Sonnenblick  
 Michael Stotts & David Mayhew  
 Mark & Ileen Swerdlow  
 Alvin & Lesley Morgan Thompson  
 Michael & Helena Thomson  
 Mr. & Mrs. Thomas R. Trumble  
 Dudley & Gerri Watkins  
 Joseph Weicher  
 Dr. Jean Weigert & Mr. Daniel Millstein  
 Nancy C. Wilde  
 Susan & Elliot Williams  
 Katherine & Raymond Wilson

**MEMORIAL & HONORARY**  
**IN HONOR OF SHERWOOD WILLARD**  
 Geo & Laura Estes  
**IN HONOR OF DARRYLLEE VANOUDEHNOVE**  
 James Perlotto  
**IN HONOR OF CHRISIE RIPLE**  
 Susan & Brian Clemow  
**IN MEMORY OF RYAN NAGEL**  
 Marlene & Dave Nagel  
**IN HONOR OF CHRIS & JANET LARSEN**  
 Judith & Louis Friedman  
**IN MEMORY OF JACK & PATSY HUNTINGTON**  
 John W. Huntington  
**IN MEMORY OF COMMISSIONER HOWARD BELKIN**  
 Louise P. Belkin  
**IN MEMORY OF MARY CURTISS**  
 Jennifer Crookes Carpenter  
 & Terrence Lavin  
**IN HONOR OF ANNA HIENEMAN**  
 Hattie Kaufman  
**IN MEMORY OF MARY DANA SHIPMAN**  
 Marina & Brock Putnam  
**IN MEMORY OF MARIJA TRESNJAK**  
 Carrie & Jonathan Hammond  
 Jordine Von Wantoch  
 Arnold & Beverly Greenberg  
 David & Janice Klein  
**IN HONOR OF SUE COLLINS AS NEW BOARD PRESIDENT**  
 Rosalie B. Roth  
**HARTFORD STAGE STAFF ANNUAL GIVING**  
 Scott Bartelson  
 Anthony Bell  
 Antay Bilgutay & Paul Ditolla  
 Pete Carey  
 Jennifer Crookes Carpenter  
 Aurelia Clunie  
 Ayla Davidson  
 Alexandra Fischbein  
 Casey Grambo  
 David Henderson  
 Bryan & Traci Holcombe  
 Tim Kendrick  
 Jeffrey Lagasse  
 Chuck & Theresa MacNaughton  
 Lew & Kristen Michaels  
 Jim Morgan  
 Christopher Nelson  
 Andrew Palmer  
 Nina Pinchin & Kevin Scott  
 Robert Reader  
 Jennifer & Nathan A. Roberts  
 Michael Stotts & David Mayhew  
 Emily Van Scoy  
 Ian Sweeney  
 Darko Tresnjak & Joshua Pearson  
 DarrylLee VanOudenhove  
 Cheryl & Bill Winter

**SHAKESPEARE SOCIETY**  
*The Shakespeare Society comprises individuals who have provided for the future of Hartford Stage in their estate plans. Hartford Stage is deeply grateful for their generosity and foresight.*

Anonymous (15)  
 Mr. & Mrs. William Atwood  
 Maxwell & Sally Belding  
 Mr. & Mrs. Paul Bourdeau  
 Mrs. Joan Brown  
 Kimberley & Christopher Byrd  
 Marla & John Byrnes  
 Edward C. Cape  
 Mario R. Cavallo  
 David Clark  
 Sue A. Collins  
 Kathy Frederick & Eugene Leach  
 Dieter & Siegelind Johannes  
 Janice & David Klein  
 Joel M. & Naomi Baline Kleinman  
 Katherine J. Lambert  
 Christopher & Janet M. Larsen  
 Tom & Margah Lips  
 Elaine T. Lowengard  
 Helen Ingram  
 Judith Meyers & Richard Hersh  
 Tuck & Ki Miller  
 Judge Jon O. Newman  
 Belle K. Ribicoff  
 George Richards  
 Ezra & Chrissie Ripple  
 Dr. & Mrs. Russell Robertson  
 Barbara Rubin  
 Robert K. Schrepf  
 Donald & Linda Silpe  
 Jennifer Smith Turner & Eric Turner  
 Elsa & Michael Suisman  
 Michael Wilson & Jeff Cowie  
 Michael & Ellen Zenke

**IN MEMORIAM:**  
*Hartford Stage fondly remembers these late Shakespeare Society members*

Anonymous (6)  
 Susan R. Block  
 Clifford S. Burdge  
 Ruth Cape  
 Anna Clark  
 James H. Eacott, Jr.  
 Yummy Graulty  
 Hugh M. Joseloff & Helen J. Joseloff  
 Nafe E. Katter  
 Mr. & Mrs. Henry R. McLane  
 Mary & Freeman Meyer  
 Ann Richards  
 Talcott Stanley  
 Janet S. Suisman  
 Louise W. Willson

**If you are interested in making a planned gift, call Pete Carey at (860) 520-7258.**

+ Deceased  
 Donors printed in red or blue have shown extraordinary loyalty to Hartford Stage. Those whose names are printed in red have given at least 25 years of continuous, uninterrupted support. Those whose names appear in blue have given 10 years of continuous, uninterrupted support.



# ACT NOW FOR THE FUTURE AND CAPITAL CAMPAIGN CONTRIBUTORS FOR THE 2010, 2014 AND 2015 RENOVATIONS

## VISIONARIES

State of Connecticut  
George L. Estes III & Laura R. Estes  
and two long-time friends of  
Hartford Stage

## LUMINARIES

Jill Adams & Bill Knight\*  
Aetna Foundation  
The John & Kelly Hartman Foundation  
(as recommended by Paul L. Bourdeau)\*  
Hartford Foundation for Public Giving  
The Hoffman Family\*  
The Nafe E. Katter Trust  
Janice & David Klein\*  
Christopher & Janet M. Larsen/  
The Larsen Fund  
Marjorie E. Morrissey\*  
George & Ann+ Richards  
Chrissie & Ezra Ripple\*  
The Travelers Foundation  
Brooke & Ted Whittemore\*

## LEADERSHIP

City of Hartford/Greater Hartford Arts  
Council\*  
David & Anna+ Clark\*  
Sue Ann Collins  
Walter & Diane Harrison  
David & Sharon Jepson\*  
Tom & Margah Lips\*  
Jane & Roger Loeb  
Esther A. Pryor\*  
Mrs. Millard H. Pryor, Jr.\*  
The Edward C. & Ann T. Roberts  
Foundation  
June Miller Rosenblatt\*  
Stephen & Amy Sills  
Donald & Linda Fisher Silpe  
Sally Speer\*  
William & Judith Thompson\*  
United Technologies Corporation  
The Estate of Louise W. Willson

## PARTNERS

Arnold & Peg Amstutz  
The Beatrice Fox Auerbach Foundation  
Fund at the Hartford Foundation  
for Public Giving, as recommended  
by Rena Koopman, Beatrice Koopman,  
and Dorothy Koopman  
R. Kelley & Walter Bonn  
Rick & Susan Copeland  
Harry E. Goldfarb Family Foundation, Inc.  
Maximilian E. & Marion O. Hoffman  
Foundation

Katherine J. Lambert\*  
William and Alice Mortensen Foundation\*  
Michael D. & Colleen S. Nicaastro\*  
The Seedlings Foundation  
Jack & Donna Sennott\*  
Bruce & Betsy Simons\*  
Allan & Sally Taylor  
Mark & Patty Willis\*

## ADVOCATES

The Estate of Douglas W. Addison  
Andra Asars\*  
Estate of Cynthia Kellogg Barrington  
Paul & Joanne Bourdeau  
Christopher & Kimberley Byrd  
Marla & John Byrnes\*  
Sara & David Carson\*  
Bruce Cliff & Andrew Huber  
Rick & Jane Costello  
Robert & Susan Fisher  
Beverly & Arnold Greenberg  
Tom & Eunice Groark\*  
Gwendolyn Smith Iloani  
George A. Ingram  
Jack & Sally Kennedy  
Lee G. Kuckro\*  
Michael & Roxane Lipton  
Judith Meyers & Richard Hersh\*  
The Katharine K. McLane &  
Henry R. McLane Charitable Trust  
Tuck & Ki Miller  
Robert A. & Joan C. Penney  
Thomas Richards & Kimberly Feltovic\*  
Barbara Rubin\*  
Jennifer Smith Turner & Eric Turner  
Elsa & Michael Suisman  
Ileen P. Swerdlhoff & Mark H. Swerdlhoff\*  
Nadine Francis West & Arnold B. West\*  
John H.P. & Karen Cronin Wheat  
Magrieta & Sherwood Willard\*  
Michael Wilson & Jeff Cowie\*

## SUPPORTERS

Linda S. Alexander\*  
Anonymous  
Lawrence+ & Ruth Alexander\*  
John Alves & Rodolfo Ramirez  
Harold & Joyce Buckingham  
Sara Marcy Cole  
Andrew M. Fleischmann  
Rose & Joseph Fortuna  
Mr. & Mrs. Jerry Franklin  
Elliot F. Gerson  
Grunberg Family Foundation  
David & Beth Jimenez

John & Beth Lynch  
The Richards Family Benevolent Fund  
Leonard & Deanna Sue Sucsy  
John Weber & Annie Jennings  
Linda Cheverton Wick & Walter Wick  
Henry M. Zachs

## SEAT CAMPAIGN

Jay & Eugenia Benet  
Bonnie S. Bercowetz & Paul L. Klopp  
Susan R. Block+  
Martin & Lynn Bloom  
Joel Brehm & Rodney Dugas  
Stephen & Nancy Bright  
Ellen Brown  
Michele B. Bush & Michael Cooper  
Edward C. Cape  
Austin & Lynne Carey  
Eversource  
Catherine Daly & Roy Dion  
Sonya Dockett+ & Anthony Nwachukwu  
William & Lois Druckemiller  
William Gratz & Jay Bruno  
Frank Haviland & Shirley Mae Neu  
Carrie & Jonathan Hammond  
Greg & Renata Hayes  
Chloe & Wes Horton  
Herbert Isaacson  
Joel & Naomi Kleinman  
Robert & Anne Lally  
David Lees  
Andrew & Lauren Lieberman  
Mr. & Mrs. Crawford Lincoln  
Cynthia K. Mackay  
Margaret Marchak & Mark Schreier  
Katharine & Hugh McLean  
Johanna M. Morrison  
Sherman & Janet U. Murphy  
David & Marlene Nagel  
Arlene & Daniel Neiditz  
Sarah & Samuel Paul  
Judy Pitt & Robert Rosson  
David & Karen Polk  
Don C. Sikes  
Mr. & Mrs. Nelson Sly  
Edward & Margaret Storrs  
Katherine N. Stott  
Richard & Jane Tedder  
Christopher & Helen Winsor  
Ms. Ruth Ann Woodley  
& Mr. Peter Gourley

+ Deceased

\* includes seat campaign

# SPOTLIGHT your business

Advertise in  
Stageplace  
magazine

**LIFE**

Marketing & Events

**TO ADVERTISE, CONTACT:**

**Rita Strogoff • (860) 995-0558 • ramps1115@cox.net**

## DINING, ENTERTAINING & CELEBRATIONS



Mozzicato Caffé is the perfect place to relax as you enjoy an espresso, cappuccino, latte, tea, Italian pastry, or gelato along with a full liquor bar. Bring a date, a friend, family or a business associate and enjoy the warm, relaxed and authentic Italian atmosphere.

329 Franklin Avenue, Hartford 860.296.0426  
125 New Britain Avenue, Plainville 860.793.2253  
731 North Colony Road, Wallingford 203.294.1122

**mozzicatobakery.com**

**Valet  
Parking  
AVAILABLE**



**PEPPERCORN'S GRILL**

*Award Winning Cuisine*

"Excellent" ~ *New York Times*

"Peppercorn's is about as close to Italy as you're going to get on Main St." ~ *Hartford Courant*

357 Main Street • Hartford  
860.547.1714 • [www.peppercornsgrill.com](http://www.peppercornsgrill.com)



Hartford Stage "Show Special"

**20% OFF your entree**  
with tickets the night of the show.



DAVID YURMAN

**LUX BOND & GREEN**  
JEWELRY WATCHES GIFTS • SINCE 1898

46 LaSalle Road West Hartford 860.521.015  
Somerset Square Glastonbury 860.659.8510  
Westport Mohegan Sun Wellesley