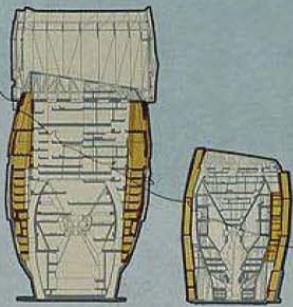
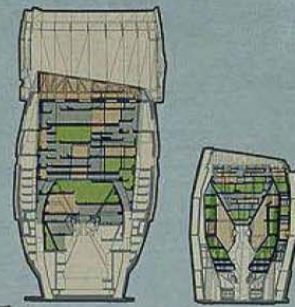


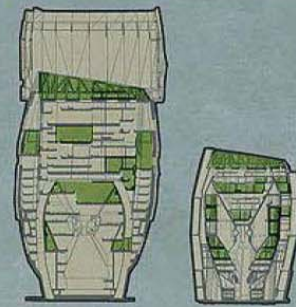
STRUCTURAL CORE



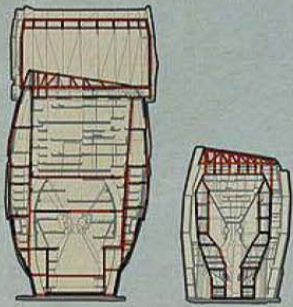
VERTICAL CIRCULATION



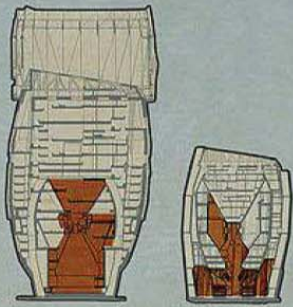
LIVING/COMMERCIAL/CIVIC



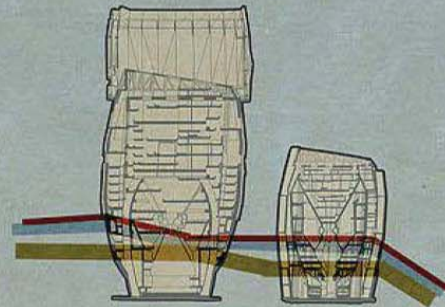
GREEN SPACES



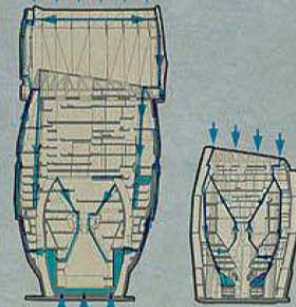
STRUCTURAL FRAME



PROCESSING FACILITIES



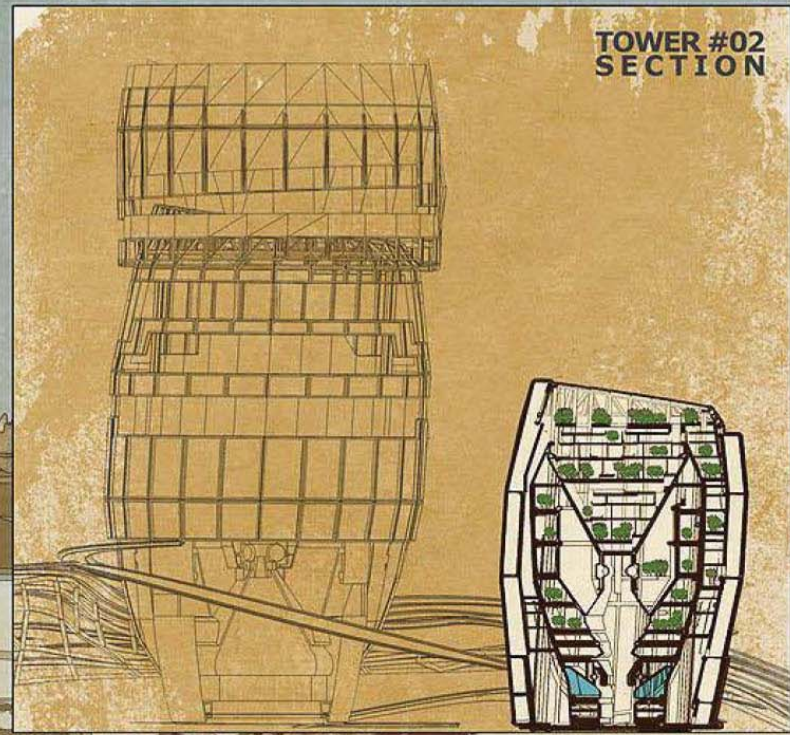
TRAFFIC CORRIDOR



WATER FILTRATION



TOWER #01 SECTION



TOWER #02 SECTION



**SELF-ORGANIZING
COMMUNITY SPACES**



**+920 FT
EXTENDED SPACE FRAME**

**+620 FT
PARK SPACE / COMMUNAL FARMS**

**+250 FT
COMMUNAL LIVING / GREEN SPACES**

**+480 FT
PARK SPACE**

**+120 FT
WATER FILTRATION TANKS**

**+180 FT
RESIDENTIAL**

**+000 FT
MATERIAL RECLAMATION FACILITY**





BOAT DOCKS

MATERIAL RECLAMATION

CONVEYER TO WASTE PROCESSING

PUBLIC TRANSIT

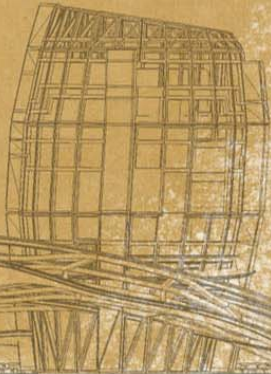
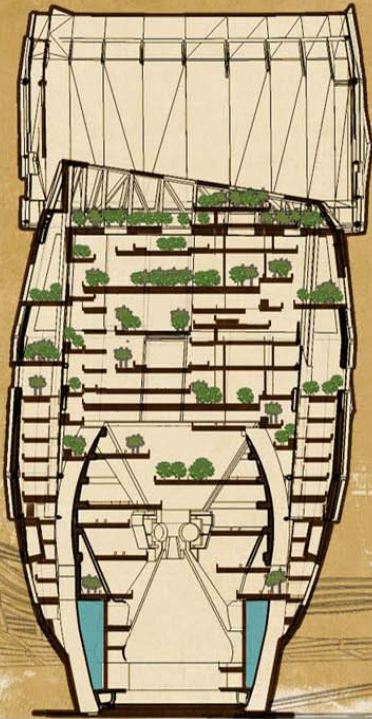
MAKOKO VILLAGE

FISH FARM

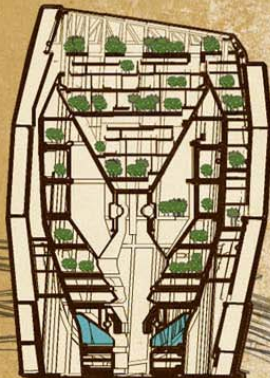
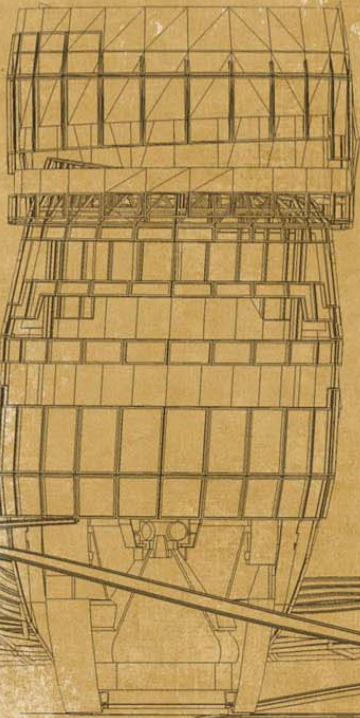
THIRD MAINLAND BRIDGE [SITE PLAN] 0.75MI

PRIVATE TRANSIT / PUBLIC PARK SPACE

TOWER #01 SECTION



TOWER #02 SECTION



MATERIAL RECLAMATION [MATERIAL REUSE / BIOFUEL PRODUCTION]

The Materials Reclamation Facility [MRF] located at the base of Tower #01 is a specialized and community-run plant that receives, separates and prepares recyclable materials for both resale and reuse. Non-recyclable materials and waste from the fish farms located at Tower #02 is processed for biofuel production.

The Biofuel facility is a response to Nigeria's high rate of deforestation and the need for sustainable fuel alternatives. The MRF works in concert with the sites proximity to as well as practice of utilizing rubbish for Land Reclamation that occurs in the neighboring Makoko and the indiscriminate dumping of trash in nearby Ebute Metta.



TRANSPORTATION [MASS TRANSIT / PRIVATE TRANSIT]

Overcrowding, vehicle-wrecking potholes, few working traffic lights, carjacking, corrupt traffic police, and flooded roads are common attributes of traffic in Lagos. This design seeks to alleviate traffic congestion by creating a network of auxiliary highways and efficient transportation hubs for mass public transit along which community and commerce thrives.



PRIVATE TRANSIT



MASS TRANSIT

AQUACULTURE [MAKOKO VILLAGE COMMUNITY / FISH FARMING]

The promotion of Sustainable Fishing and Aquacultural practices in the nearby fishing slum of Makoko is a response to the fact that these practices will play an increasing role in the need for self-reliance of constant-growing improvised settlements. Their ability to survive in future economies, will depend on sustainability and production of fish for global demand.



ADJACENT FISHING VILLAGE

