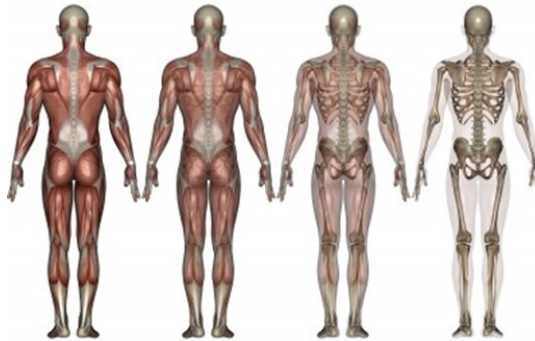


Can you help us better understand musicians' musculoskeletal disorders?



Musculoskeletal symptoms are commonly experienced by musicians, and we are trying to work out why these symptoms occur, how they impact on people and who is at most risk. We are asking musicians in South Australia to complete a survey which takes about 15-20 minutes, to better understand why these problems are so common.

We value your input, and we are offering participants who submit a completed questionnaire by **June 10, 2016**, the chance to go into a **PRIZE DRAW** for a **\$250 gift card**, or one of five \$50 gift card runner-up prizes.

Any musician aged 18 years or older can participate. Your participation is voluntary, and your data will be kept **confidential**.

If you wish to participate, please read the [information sheet](#), then click [here](#) to access the survey. If the survey does not open automatically, please copy and paste the following link to your internet browser's address bar: https://www.surveymonkey.com/r/Musculoskeletal_ElderCon2

If you would prefer to complete a paper version, or if you have any questions about the survey, please feel free to email me (Jessica.Stanhope@adelaide.edu.au) or give me a call (08 8313 1985).