



EXAMPLE PROJECT *



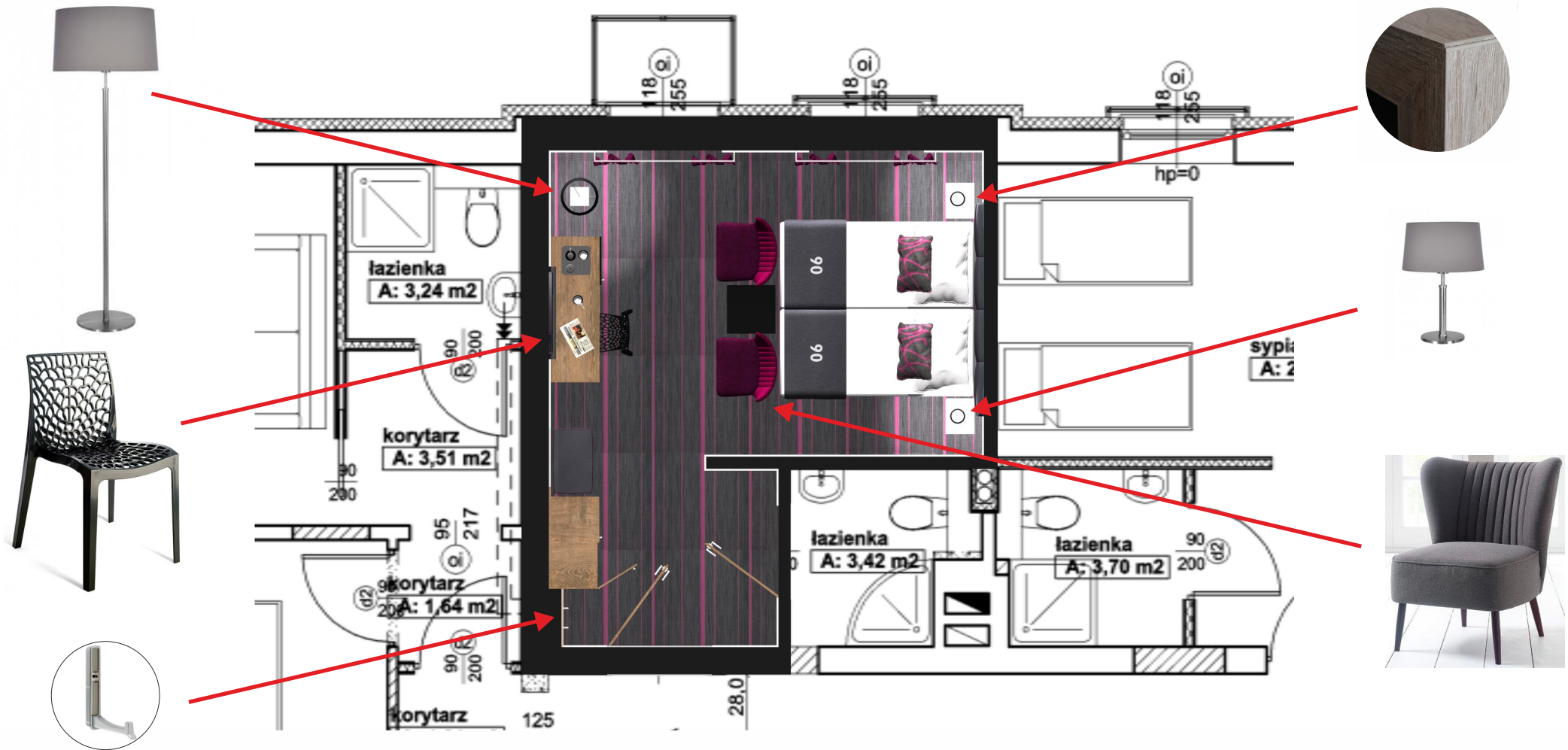
* PERFORMED DURING PHASE 2 (PROJECT) DESCRIBED IN THE DOCUMENT: FABER - INVESTMENT PROCESS



Faber Sp. z o.o., ul. Santocka 42A, 71-071 Szczecin, Poland

NIP 852-10-90-091, REGON 810851219, District Court in Szczecin XVII Economic Department KRS No. 99303, Share Capital 50.000pln

PRESENTATION OF PROPOSED FURNITURE, COLOURS AND MATERIALS



WORKING 3D PRESENTATION



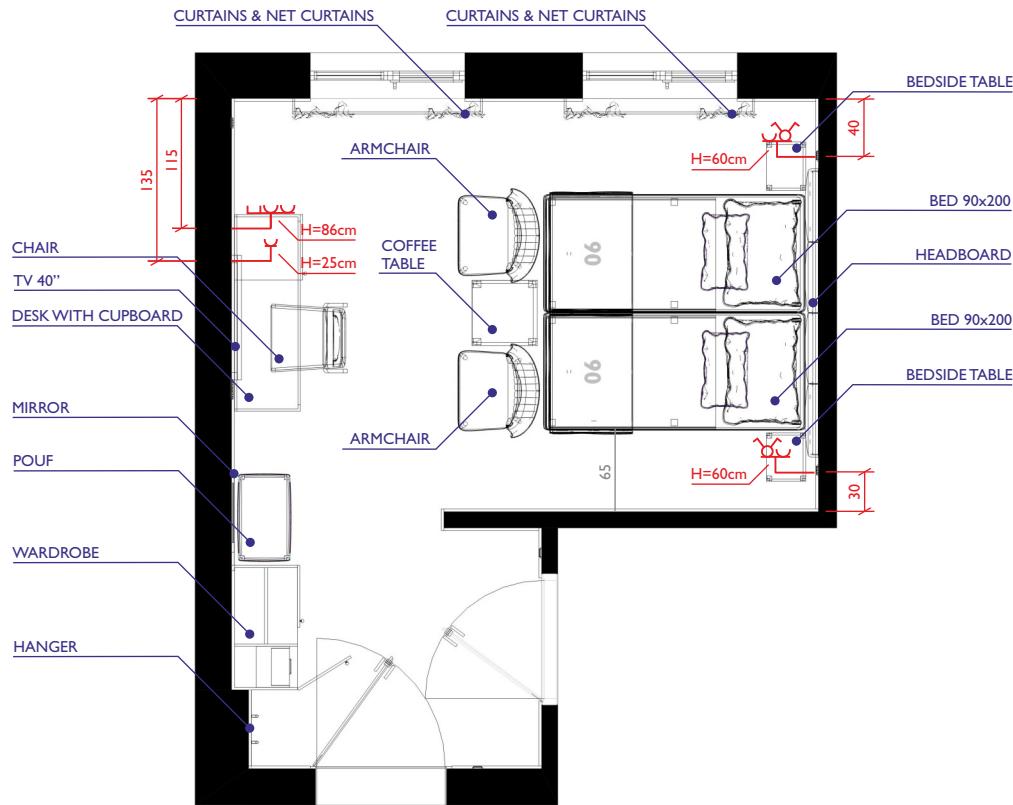
3D VISUALIZATION OF THE INTERIOR



PHOTOREALISTIC 3D VISUALIZATION OF THE INTERIOR



SUPPORT DRAWING WITH GUIDELINES FOR WIRING



All symbols determine the middle of the socket/frame. The height H indicates a dimension between the axis of the socket/frame and finished floor. Horizontal dimensions are being counted from walls to the axis of the socket/frame.

The walls/parts of wall occupied in the picture by furniture (wardrobe, headboard, desk, hanger, mirror etc.) should be deprived of all sockets/switches/electrical outputs other than the electric points/equipment indicated on the attached drawing.

Attention: The electric points shown on the layout are not all the electric equipment necessary in the hotel room. All other electric installation is determined by the client. The marked points are the outlets that are required for proper installation of the assortment provided by Faber company.

LEGEND:

- Double horizontal frame:
 - bipolar switch
 - single socket
- Triple horizontal frame:
 - Telecom socket (internet + telephone)
 - double socket
- Single socket (power supply for minibar)

Note - Drawings cannot be treated as trade electric project. They are rather demonstrative and subsidiary.

The way of drawing up the projects can differ depending on characteristics and individual features of the facility. For example we mark the dimensions of problematic areas in small rooms or we show standing human figures in 3D presentations of the rooms with height diversification (like low substrings or sloping walls).

The level of details and rendering quality depends on the Client's needs, the type of investment and the complexity of the order. In case of the delivery of furniture along with additional accessories and textile decorations (bedspreads, curtains, cushions), the Investor can request for a 3D photorealistic visualization in the quality allowing to place them on a website or in publicity materials.




CONTACT

HOTEL FURNITURE DEPARTMENT

 +48 91 4314074


 +48 91 4875827

Maciej Sargalski
Chairman of the board
контакт на языке **российским**

 +48 608505884

 msargalski@faber-meble.pl

Iwona Sargalska
Designer

 +48 608476544

 isargalska@faber-meble.pl

Katarzyna Uszek
Architect
Contact in English

 +48 608019101

 katarzyna@faber-meble.pl

Paweł Sobański
Architect
Contact in English

 +48 600434258

 architekt@faber-meble.pl



Faber Sp. z o.o., ul.Santocka 42A, 71-071 Szczecin, Poland

NIP 852-10-90-091, REGON 810851219, District Court in Szczecin XVII Economic Department KRS No. 99303, Share Capital 50.000pln