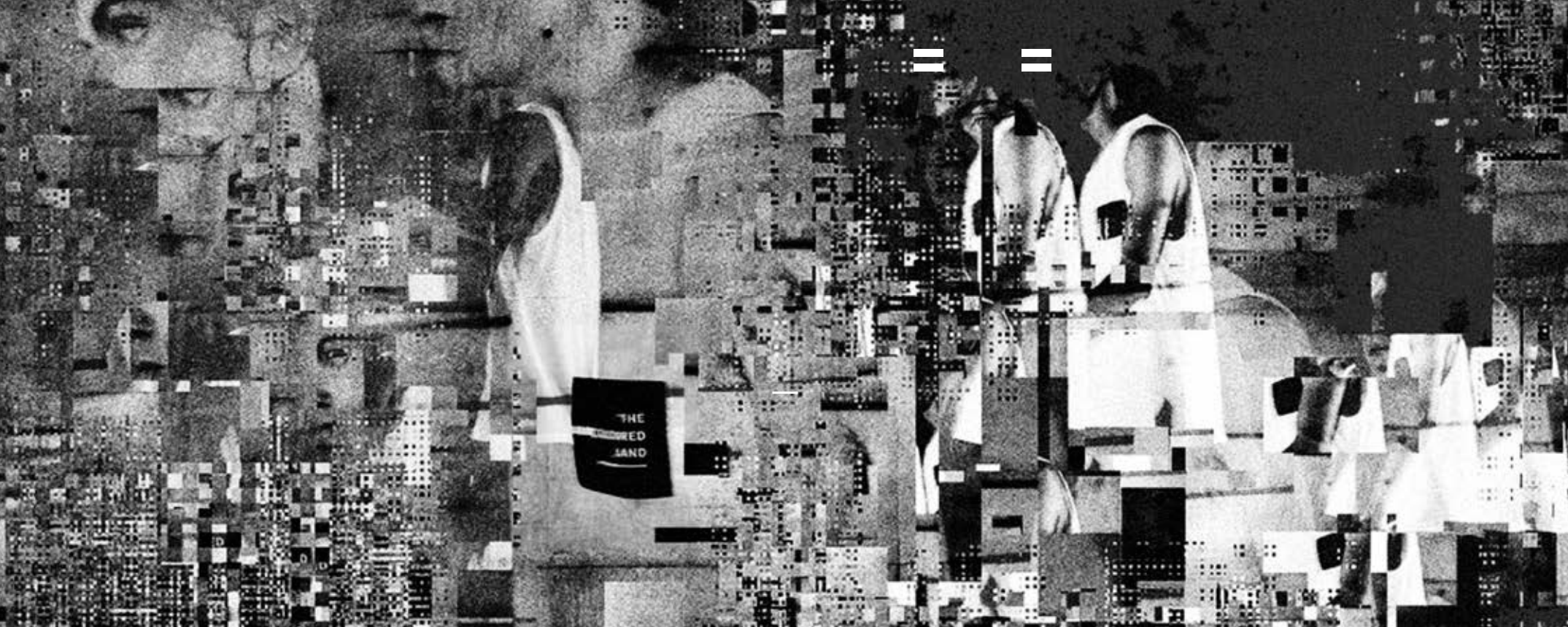
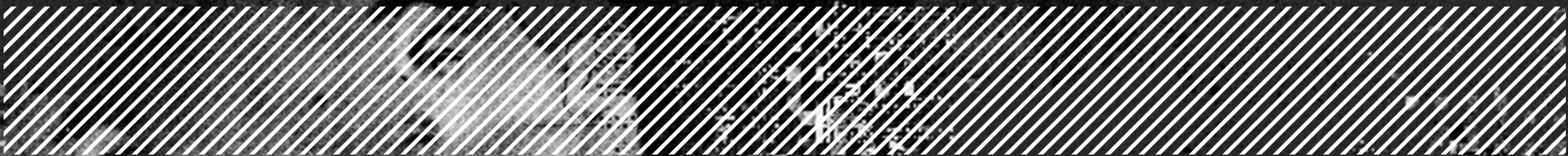


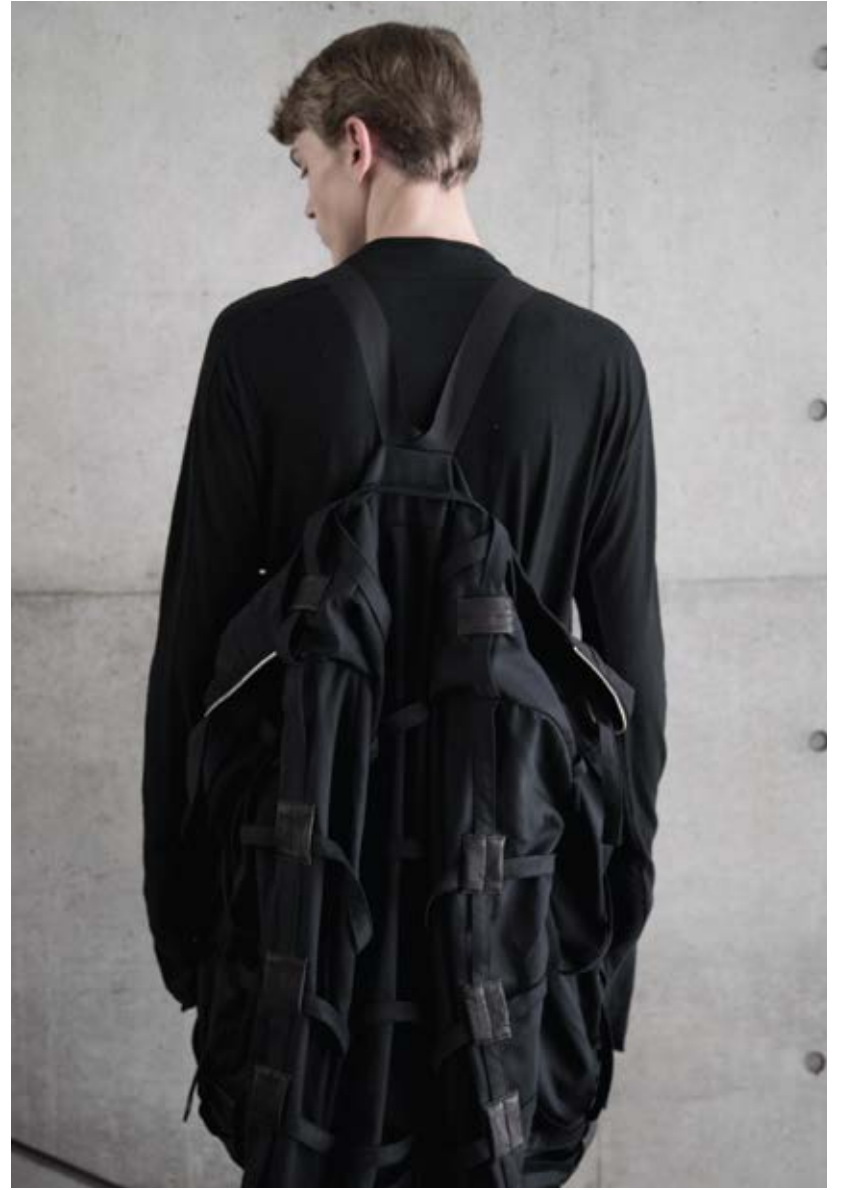
PERDU

FIRST EDITION SPRING SUMMER 2016-2017











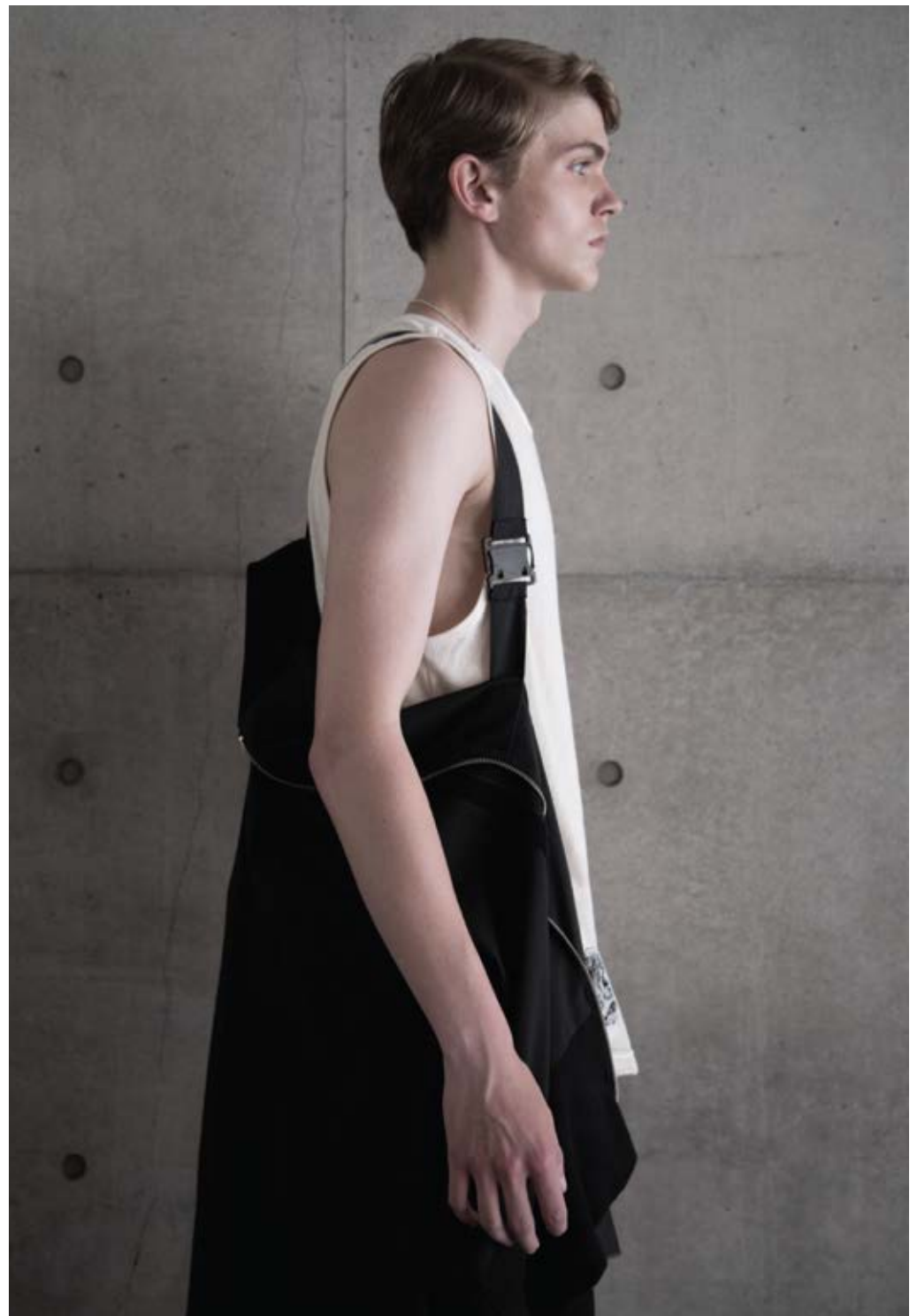
WHEN I AM IN MY ROOM LOOKING UPON THE WALLS I HAVE PAINTED I SEE THERE REFLECTIONS OF THE PERSONAL LIFE, BUT WHEN I LOOK THROUGH THE WINDOWS I SEE A LIVING NATURE AND LANDSCAPES NOT PAINTED BY HANDS. SO, TOO, WHEN I MEDITATE I FEEL IN THE IMAGES AND THOUGHTS WHICH THROG ABOUT ME THE REFLECTIONS OF PERSONALITY, BUT THERE ARE ALSO WINDOWS IN THE SOUL THROUGH WHICH CAN BE SEEN IMAGES CREATED NOT BY HUMAN BUT BY THE DIVINE IMAGINATION. I HAVE TRIED ACCORDING TO MY CAPACITY TO REPORT ABOUT THE DIVINE ORDER AND TO DISCRIMINATE BETWEEN THAT WHICH WAS SELF-BEGOTTEN FANTASY AND THAT WHICH CAME FROM A HIGHER SPHERE. THESE RETROSPECTS AND MEDITATIONS ARE THE EFFORTS OF AN ARTIST AND POET TO RELATE HIS OWN VISION TO THE VISION OF THE SEERS AND WRITERS OF THE SACRED BOOKS, AND TO DISCOVER WHAT ELEMENT OF TRUTH LAY IN THOSE IMAGINATIONS.

THE CANDLE OF VISION by AE [George William Russell]









THE COLOURS BRIGHTER AND PURER

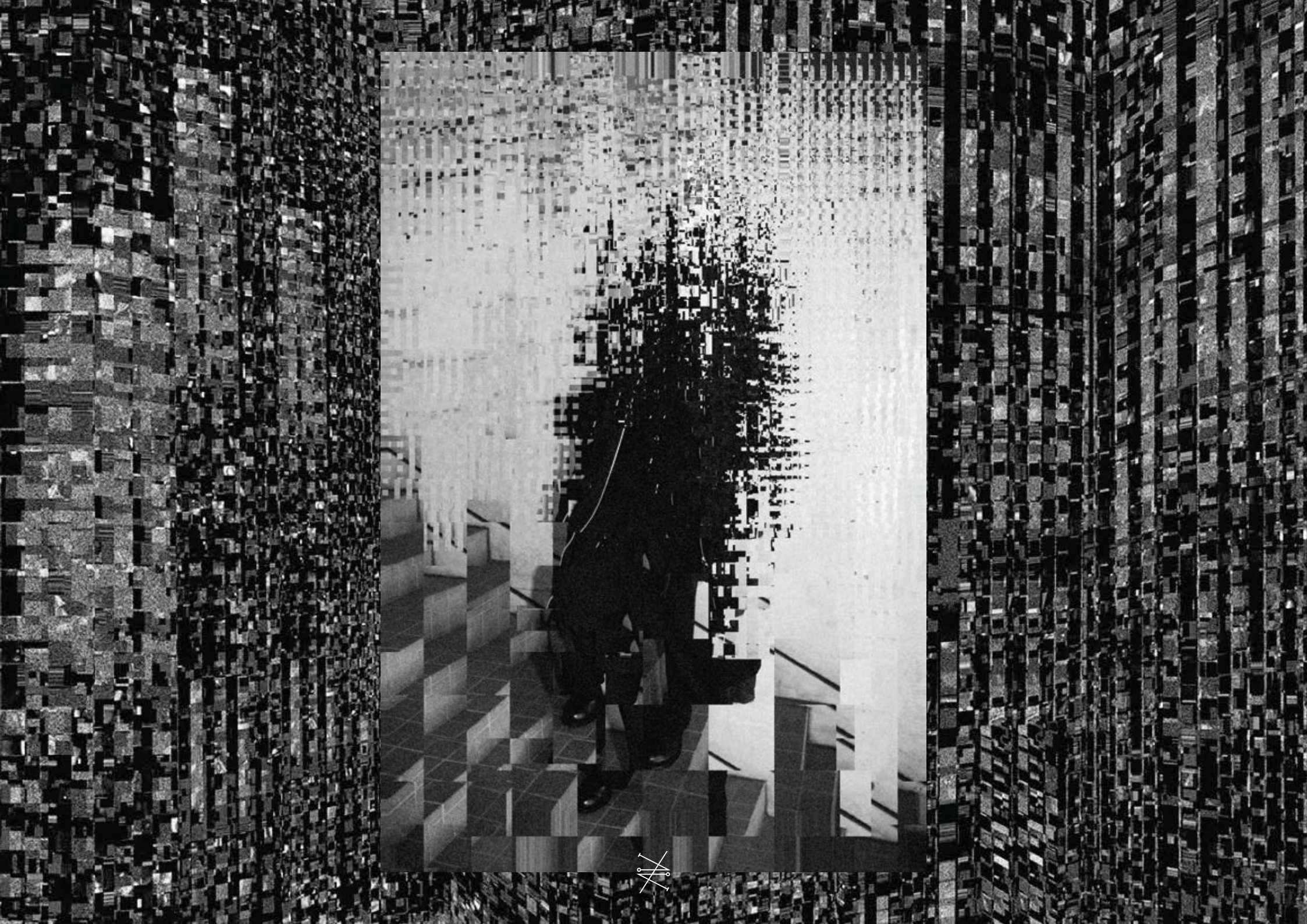
FROM THE SUN
FROM THE SUN
FROM THE SUN
FROM THE SUN

EMPLEXITY
FROM THE SUN
FROM THE SUN





















+



FIRST EDITION SPRING SUMMER 2016-2017



—