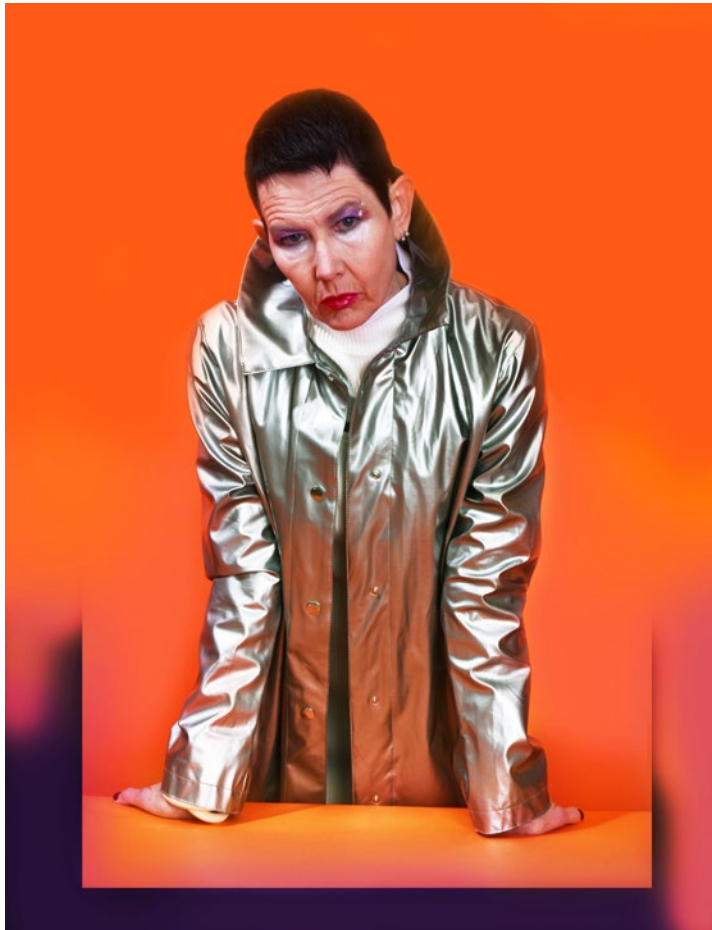


Portfolio 2016



Vanessa DISplaced — Editorial
DIS MAGAZINE — Art Direction
Photography — Robert Kulisek
Styling — K + S, 2015



Vanessa DISplaced — Editorial
DIS MAGAZINE — Art Direction
Photography — Robert Kulisek
Styling — K + S, 2015



Vanessa DISplaced — Editorial
DIS MAGAZINE — Art Direction
Photography — Robert Kulisek
Styling — K + S, 2015



Vanessa DISplaced — Editorial
DIS MAGAZINE — Art Direction
Photography — Robert Kulisek
Styling — K + S, 2015



Vanessa DISplaced — Editorial
DIS MAGAZINE — Art Direction
Photography — Robert Kulisek
Styling — K + S, 2015

Sponsored in part by:
The Society For The Diffusion of Useful Information

Next Savior in Line

02 Our Savior Has Failed Us

Process II From an Ongoing Series of Individuations

Final Stage of Authorization:

1.4 A very basic monad — (former diad) broken down into a proper growth pattern, vanity, enamel restoration &/or bone reconstruction 2 devise a new plane of existence.

(a) Plane of Existence + + +
(b) Cone of Obliscence
(c) ????

Game Over \$€£¥

Truth Revealed.
Satanic

Sponsored in part by:
The Society For The Diffusion of Useful Information

The Year of Metal is Upon Us...

Individual for Authorization:

Female (1)

Genesis 2

1.3 A very basic diad — characteristics broken down into proper growth patterns, vanity, enamel restoration &/or bone reconstruction 2 devise a new plane of experience.

Form of Bequest

(a) Plane of Existence (b) Cone of Obliscence

I hereby give and bequeath to the Foundation for Expanded Consciousness & Oral Transgression the sum of _____ dollars, pounds, yen, or euros to be applied to the general purposes of dentistry and oral progression.

signed _____

Mind regards, Satan

Former Diad

Process 1 From an Ongoing Series of Individuations

The Year of Meatal is Upon Us
Posters — Art Direction + Design, 2015



The Only Way Thru Nihilism is Nihilism Itself

Art Direction — Editorial

Photography — Robert Kulisek

Artworks — Sarah McMenimen

Styling — Cruz Valdez, 2015



The Only Way Thru Nihilism is Nihilism Itself

Art Direction — Editorial

Photography — Robert Kulisek

Artworks — Sarah McMenimen

Styling — Cruz Valdez, 2015



The Only Way Thru Nihilism is Nihilism Itself

Art Direction — Editorial

Photography — Robert Kulisek

Artworks — Sarah McMenimen

Styling — Cruz Valdez, 2015



The Only Way Thru Nihilism is Nihilism Itself

Art Direction — Editorial

Photography — Robert Kulisek

Artworks — Sarah McMenimen

Styling — Cruz Valdez, 2015



The Only Way Thru Nihilism is Nihilism Itself

Art Direction — Editorial

Photography — Robert Kulisek

Artworks — Sarah McMenimen

Styling — Cruz Valdez, 2015



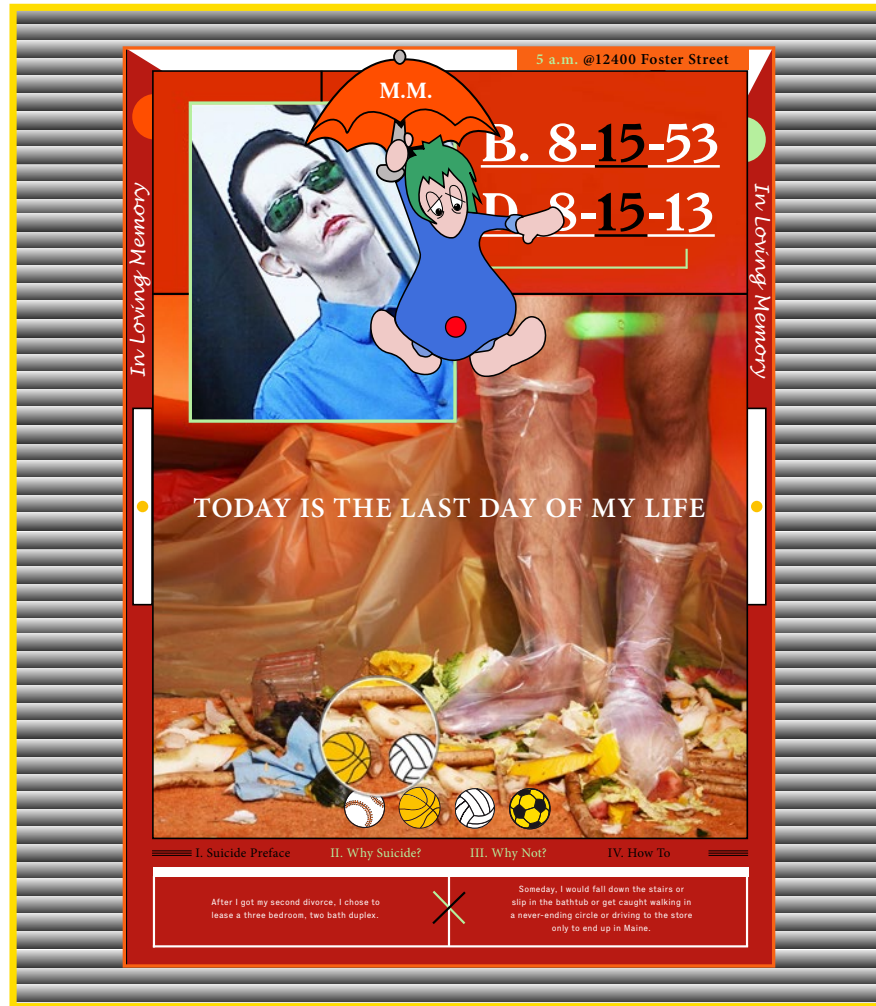
The Only Way Thru Nihilism is Nihilism Itself

Art Direction — Editorial

Photography — Robert Kulisek

Artworks — Sarah McMenimen

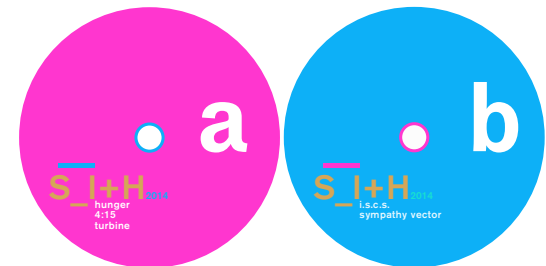
Styling — Cruz Valdez, 2015



Unfolding Play for Martin Manley
 Poster — Art direction & Design
 Text — Martin Manley, 2015
 Photography — Robert Kulisek



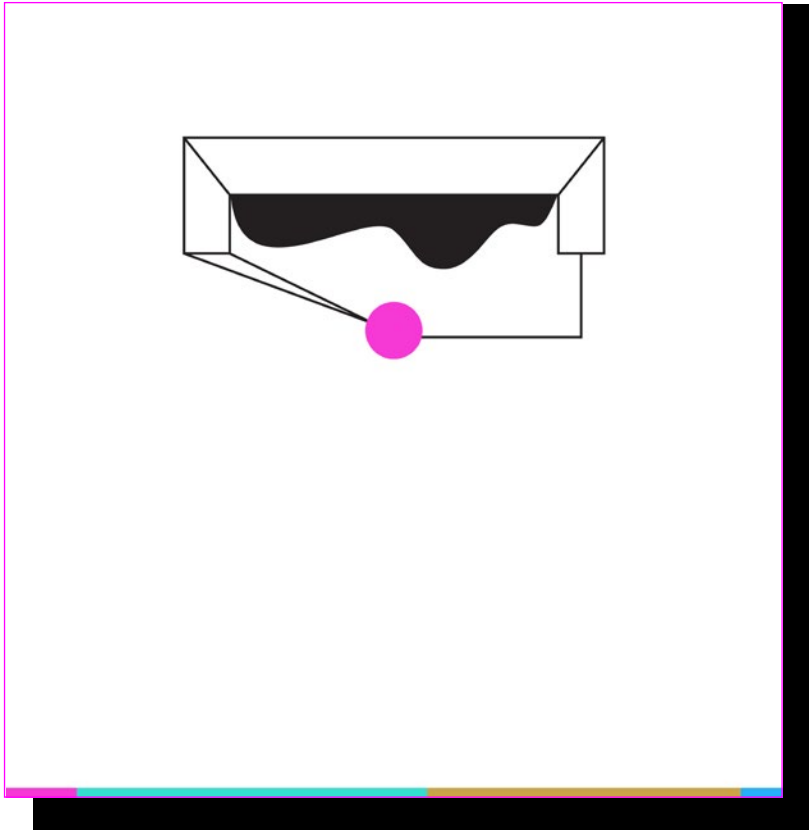
LXV — Superimposed & Hunted CD / LP
 Art Direction + Packaging Design
 Photography — Dan Allegretto
 Styling — Rushton Fleming, 2014



Back Insert



Front Insert



LXV — Superimposed & Hunted CD / LP
Art Direction + Packaging Design
Photography — Dan Allegretto
Styling — Rushton Fleming, 2014



Trust Me

Art Direction — Editorial (Forthcoming)

Photography — Robert Kulisek

Styling — Cruz Valdez

Models — CV + Dara Allen, 2015



Trust Me

Art Direction — Editorial (Forthcoming)

Photography — Robert Kulisek

Styling — Cruz Valdez

Models — CV + Dara Allen, 2015



Trust Me

Art Direction — Editorial (Forthcoming)

Photography — Robert Kulisek

Styling — Cruz Valdez

Models — CV + Dara Allen, 2015



0CVI.KEU9BC
03p.9033336
0zz.*(imuew
0LkrEN(9)
Q.V5

0..58990EEX
0)(44UIZZ.lz
034BQ/+326
045mmW28
4ii4

v place



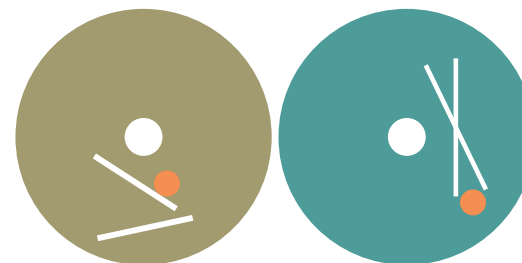
Vanessa Place Website
Art Direction + Design
2016

Back

Front



Delta Mirror — Better Unsung LP
 Art Direction + Packaging Design
 Photography — Tyler Mitchell
 Styling — Rushton Flemming
 Lightwave Records, 2014



Back of Insert



Delta Mirror — Better Unsung LP
Art Direction & Packaging Design
Photography — Tyler Mitchell
Styling — Rushton Flemming
Lightwave Records, 2014

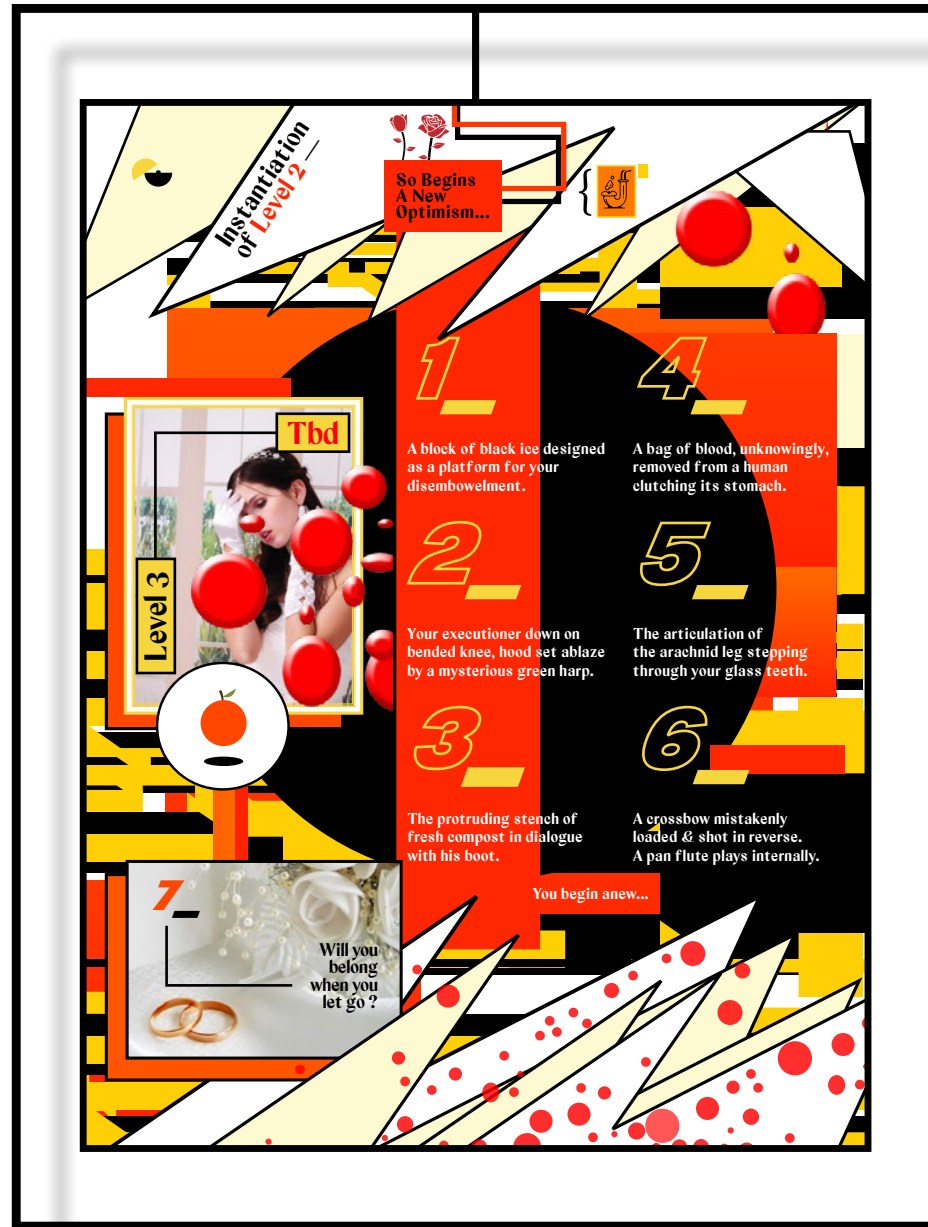
Back



Front



Delta Mirror — Better Unsung LP
Art Direction & Packaging Design
Photography — Tyler Mitchell
Styling — Rushton Flemming
Lightwave Records, 2014



Cracking Through The Dark Enlightenment
 Poster — Art Direction + Design, 2016

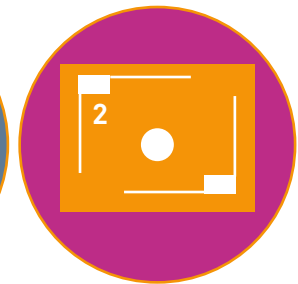
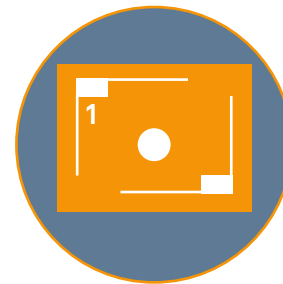
Back

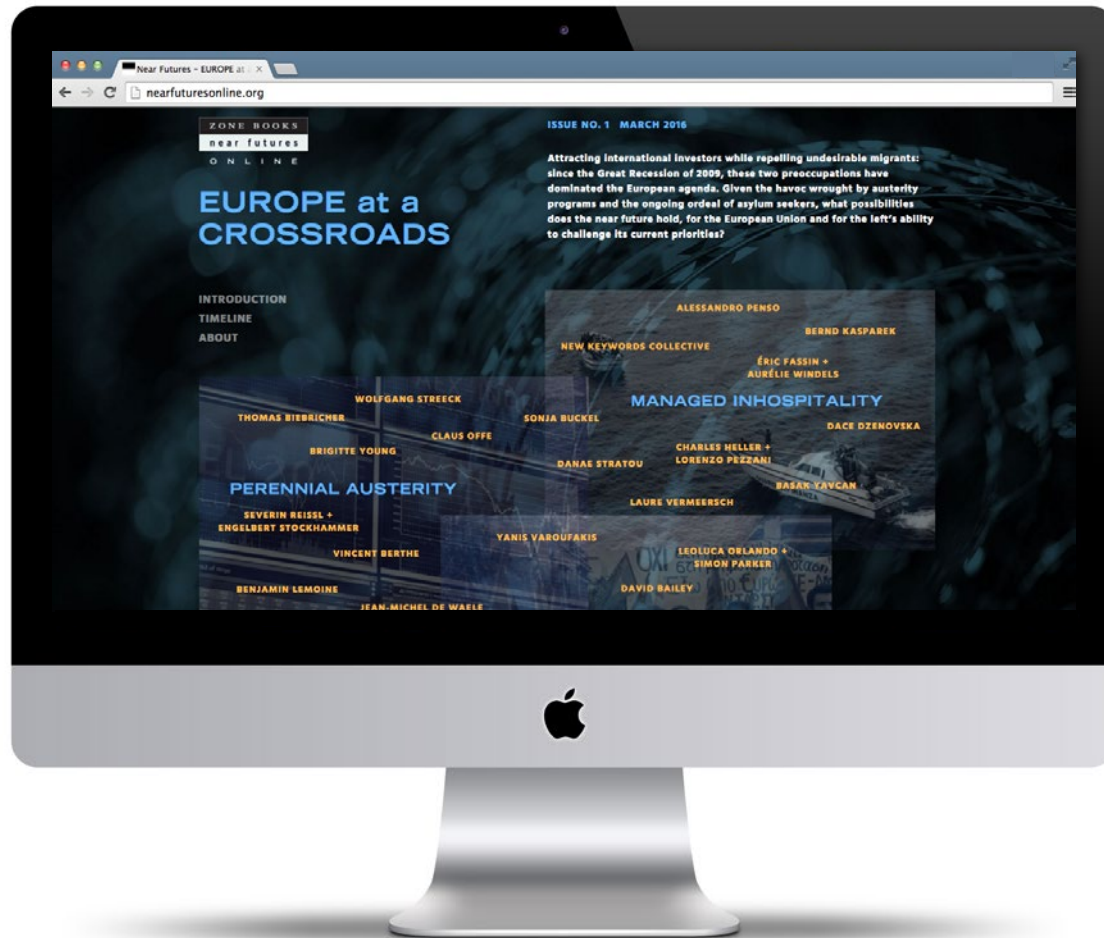
Front



RESNA — SAVAGES

Art Direction & Packaging Design
Photography by: Derek J Martin
EP, 2015





Near Futures Online (Zone Books)

www.nearfuturesonline.org

Image Consultancy, 2016



German Finance Minister Wolfgang Schäuble presents a draft of the 2014 budget during a plenary session in the lower house of the German Parliament on April 8, 2014 in Berlin. (Clemens Bilan/AFP/Getty Images)



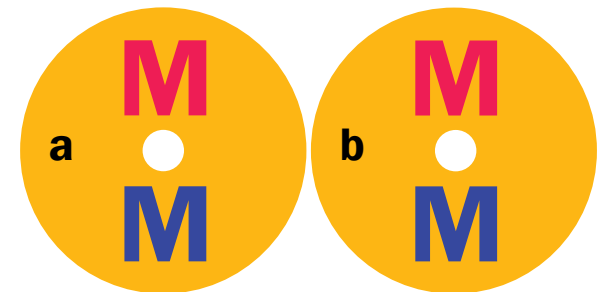
Pedestrians walk past an electronic display showing the closing figures of Hang Seng Index in Hong Kong, China on August 24, 2015. Hong Kong's snowballing stock losses are, by one measure, the most extreme since the crash of 1987. (Jerome Favre/Bloomberg via Getty Images)

Back

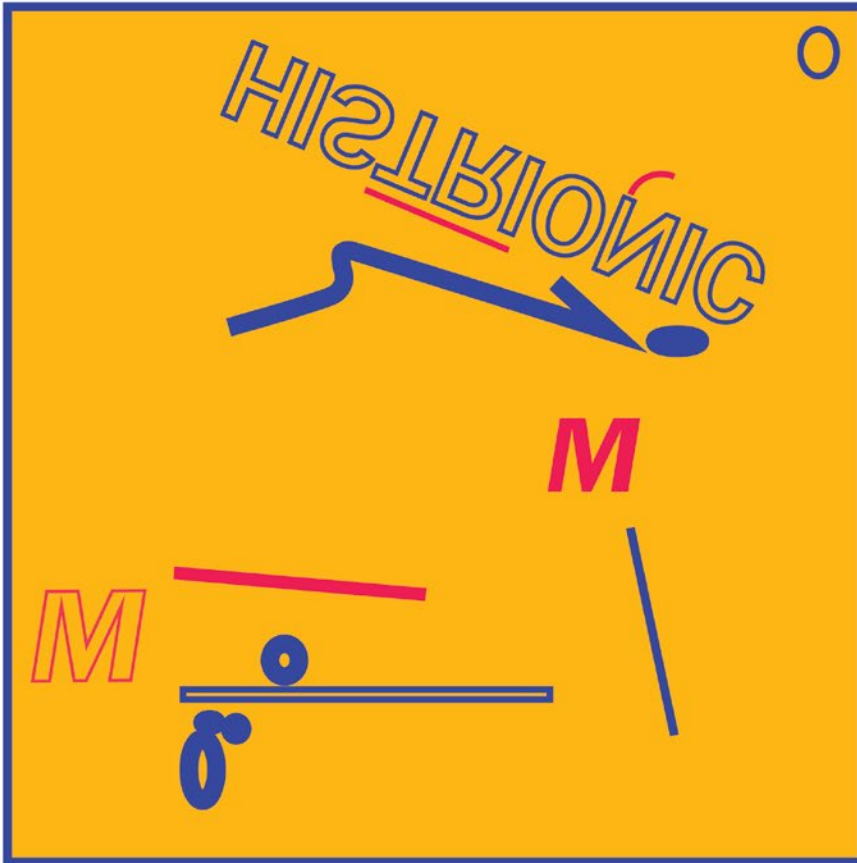
Front



Maria Minerva – Histrionic LP/CD
 Art Direction & Packaging Design
 Photography: Dan Allegreto
 Not Not Fun Records, 2014



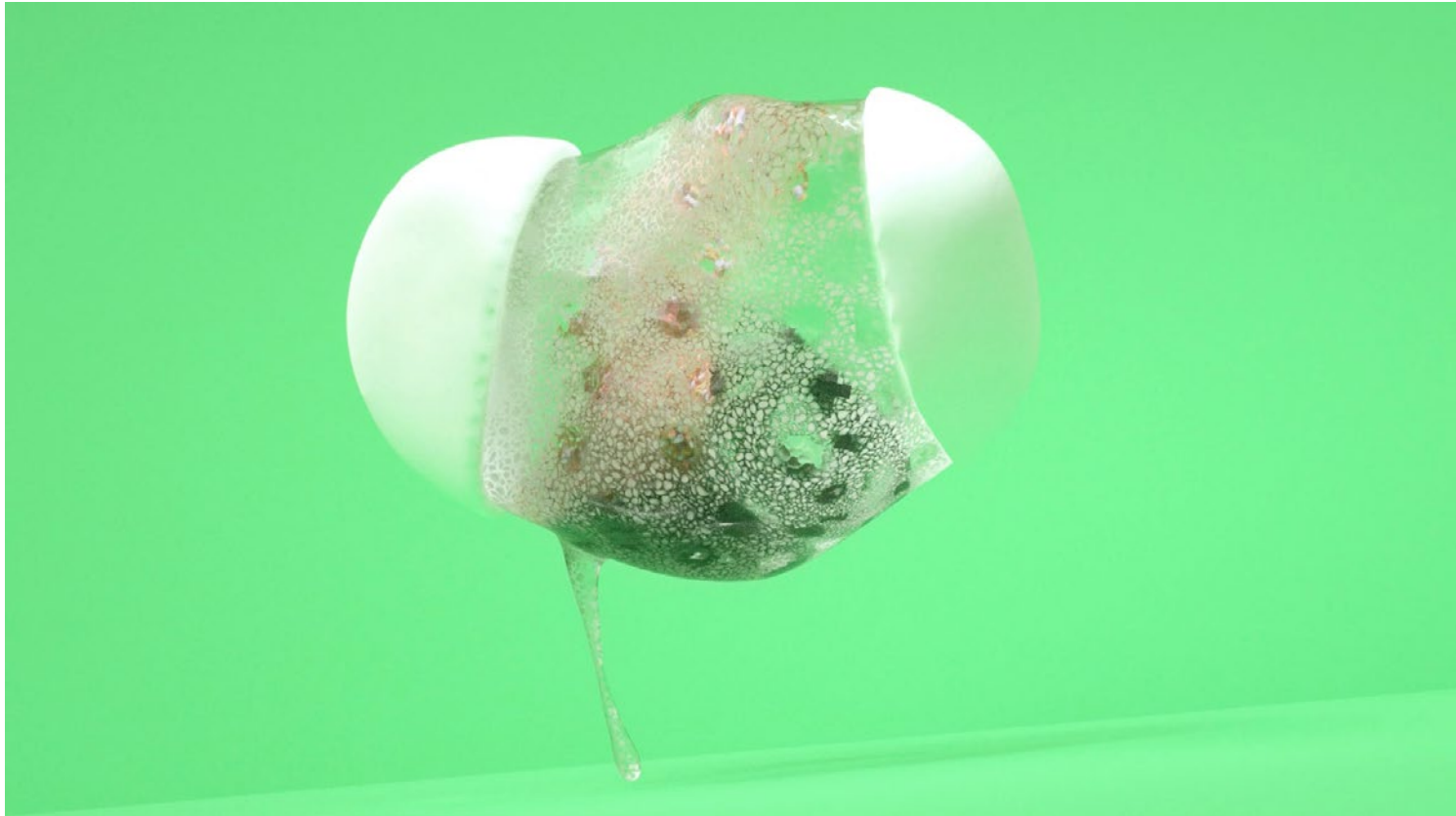
Back



Front



Maria Minerva – Histrionic LP/CD
Art Direction & Packaging Design
Photography: Dan Allegreto
Not Not Fun Records, 2014



>>>>>>> [Click Here For More Info & Video Stream](#)

Comme Des Organismes

Reimagining of Spring 2014 by Comme des Garçon

Art Direction

Video In Collaboration with Zeitguised Studio Berlin, 2014

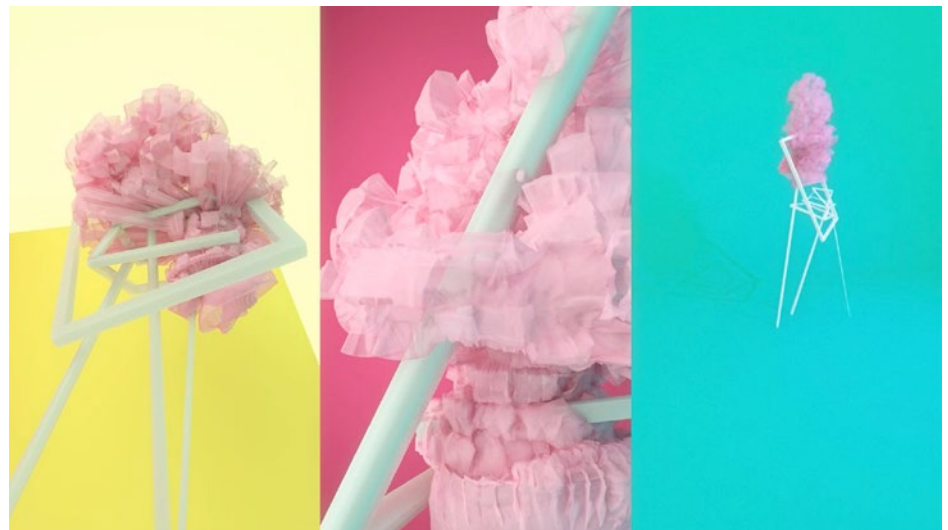
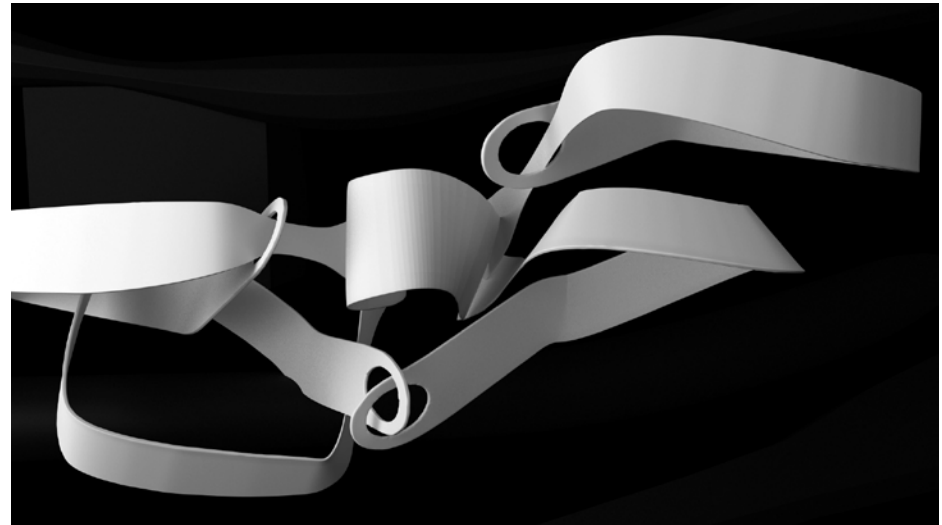


Comme Des Organismes

Reimagining of Spring 2014 by Comme des Garçon

Art Direction

Video In Collaboration with Zeitguised Studio Berlin, 2014



Comme Des Organismes

Reimagining of Spring 2014 by Comme des Garçon

Art Direction

Video In Collaboration with Zeitguised Studio Berlin, 2014



How To Dress Well – What Is This Heart (Deluxe Edition)

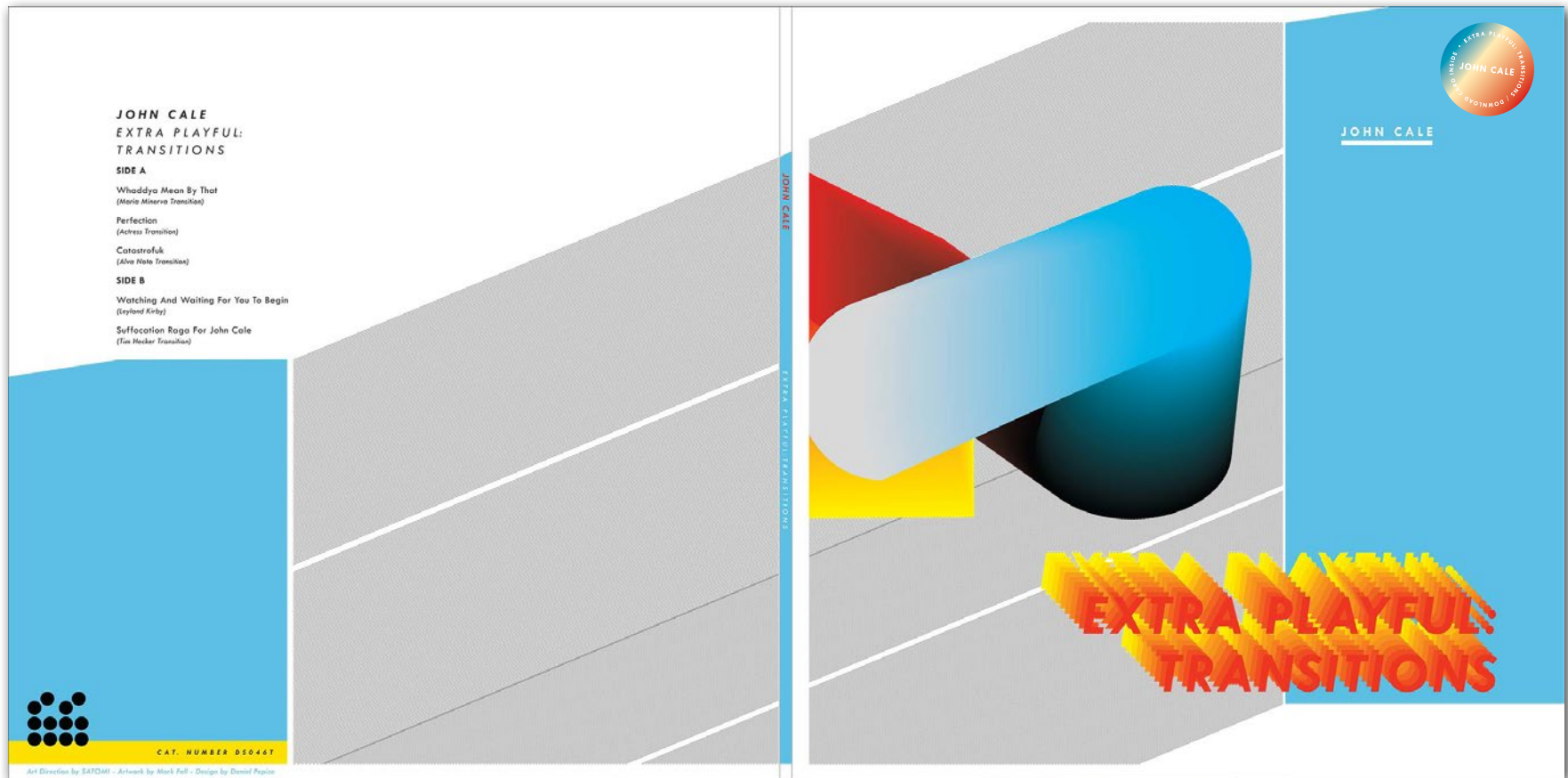
2 LP x Etched 10in and Booklet

Creative Direction

Weird World Records/Dominio, 2014

Back

Front



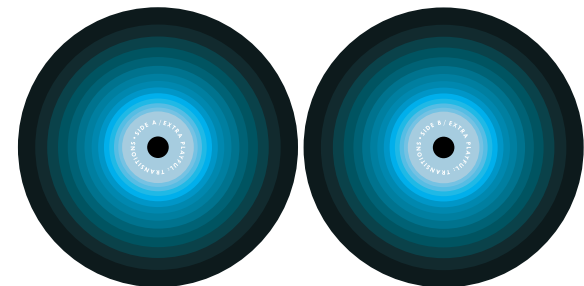
John Cale – Extra Playful Transitions

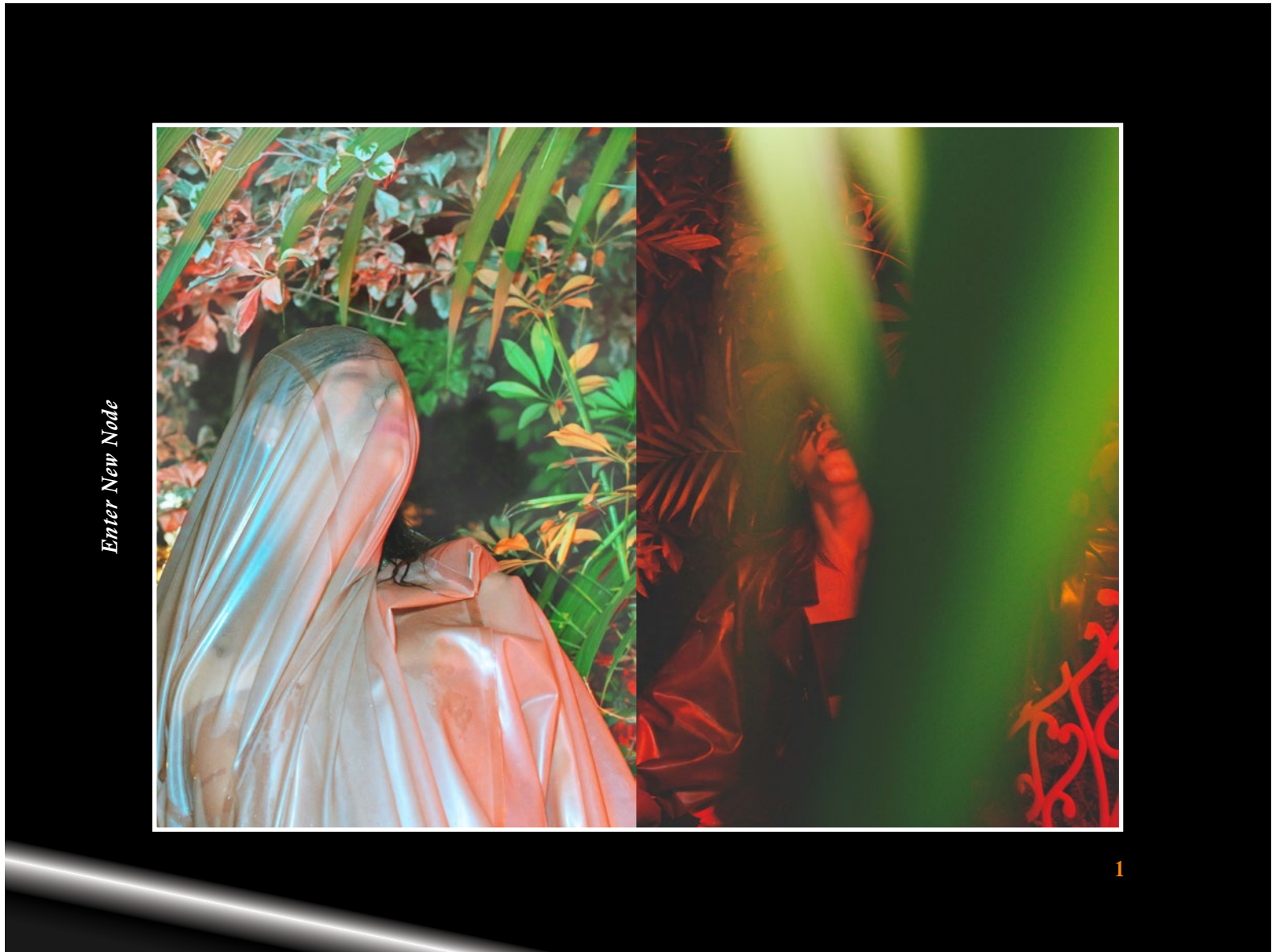
Art Direction & Layout

Artwork — Mark Fell

Design — Daniel Pepice

LP on Double Six Records, 2014





Enter New Node

1

HYDRA SS/FW 016 (Phase 1)

Campaign Images — Art Direction

Photography — Nathanel Turner

Model — Nathalia Acevedo

With Anna Gloria Flores, 2016

Continous Regeneration



2

HYDRA SS/FW 016 (Phase 1)

Campaign Images — Art Direction

Photography — Nathanel Turner

Model — Nathalia Acevedo

With Anna Gloria Flores, 2016



Biological Determinism

3

HYDRA SS/FW 016 (Phase 1)

Campaign Images — Art Direction

Photography — Nathanel Turner

Model — Nathalia Acevedo

With Anna Gloria Flores, 2016



Mechanical Separation

4

HYDRA SS/FW 016 (Phase 1)

Campaign Images — Art Direction

Photography — Nathanel Turner

Model — Nathalia Acevedo

With Anna Gloria Flores, 2016

satomi

Satomi is a multifaceted studio specializing in consultancy, research and design. Satomi operates across the spheres of creative direction, art direction, visual identity, website design, packaging and advertising.

Satomi develops tailor-made solutions by providing high quality research and producing innovative visual treatments.

Specializing in:

Creative Direction
Art Direction
Advertising
Brand Identity
Websites
Graphic Design
Packaging

Contact:

Web — www.satomi.eu
Email — antoniotreceldiaz@gmail.com
Mobile — 213-372-9554
Instagram — @a_trecel