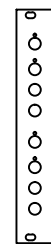
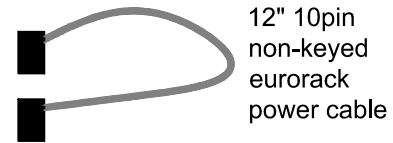
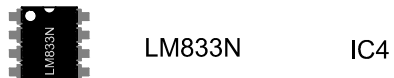
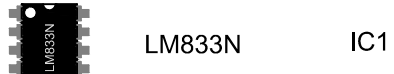
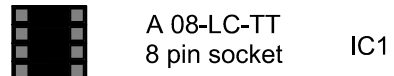
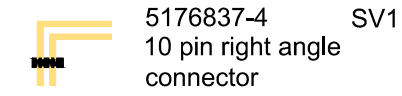
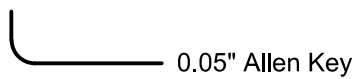
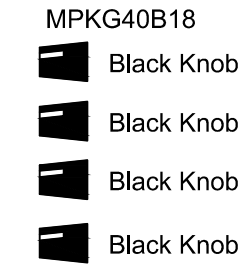
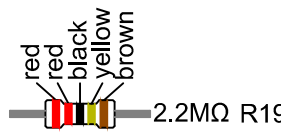
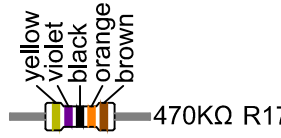
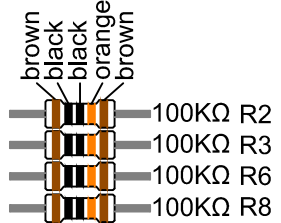
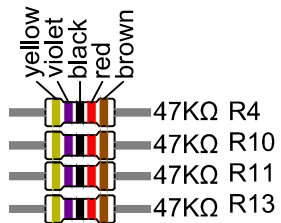
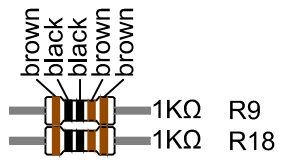
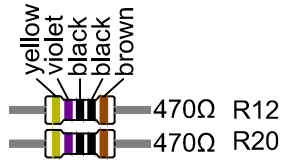
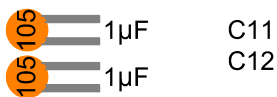
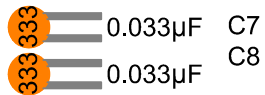
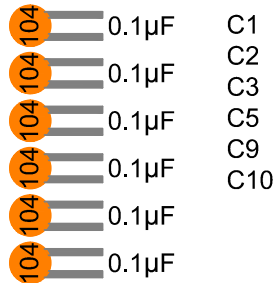
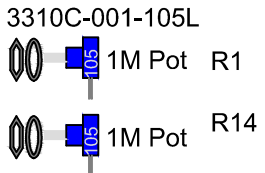
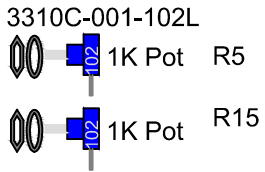
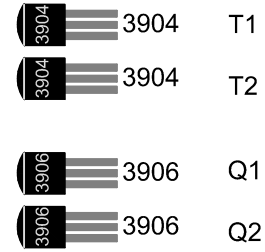


# RECKLESS EXPERIMENTATION AUDIO

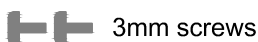
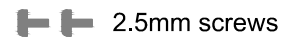
## PARTS LIST FOR DUAL DRUM 1.0 BASS AND KICK

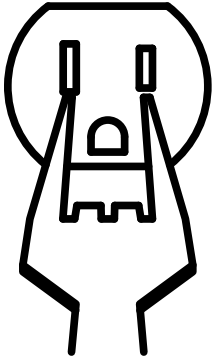


Front Plate  
Bass Kick



PCB  
Dual Drum  
1.0



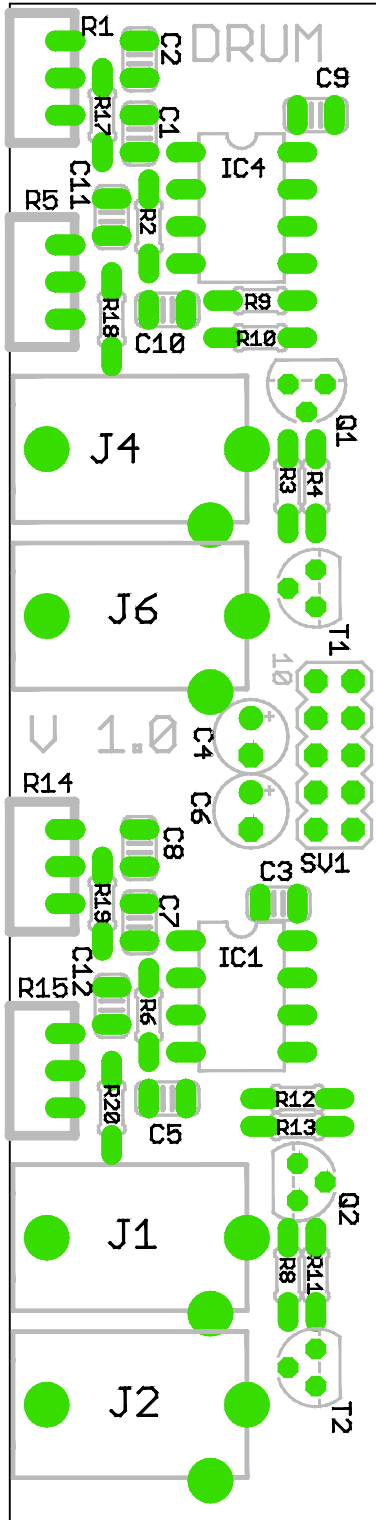


# RECKLESS EXPERIMENTATION AUDIO

PARTS LIST FOR DUAL DRUM 1.0 BASS AND KICK

ASSEMBLY VIDEO CAN BE FOUND AT

[WWW.RECKLESSEXPERIMENTATIONAUDIO.COM/KITS](http://WWW.RECKLESSEXPERIMENTATIONAUDIO.COM/KITS)



## REQUIRED TOOLS:

SOLDERING IRON, 20W-40W WITH A FINE TIP  
SOLDER, 60-40 LEAD TIN

WITH ROSIN CORE RECOMMENDED

SMALL WIRE CUTTERS

SMALL NEEDLE NOSE PLIERS

## RECOMMENDED TOOLS:

MULTI-METER (WHEN IN DOUBT METER IT OUT)

SOLDER SUCKER

SOLDER WICK

CURRENT LIMITING POWER SUPPLY