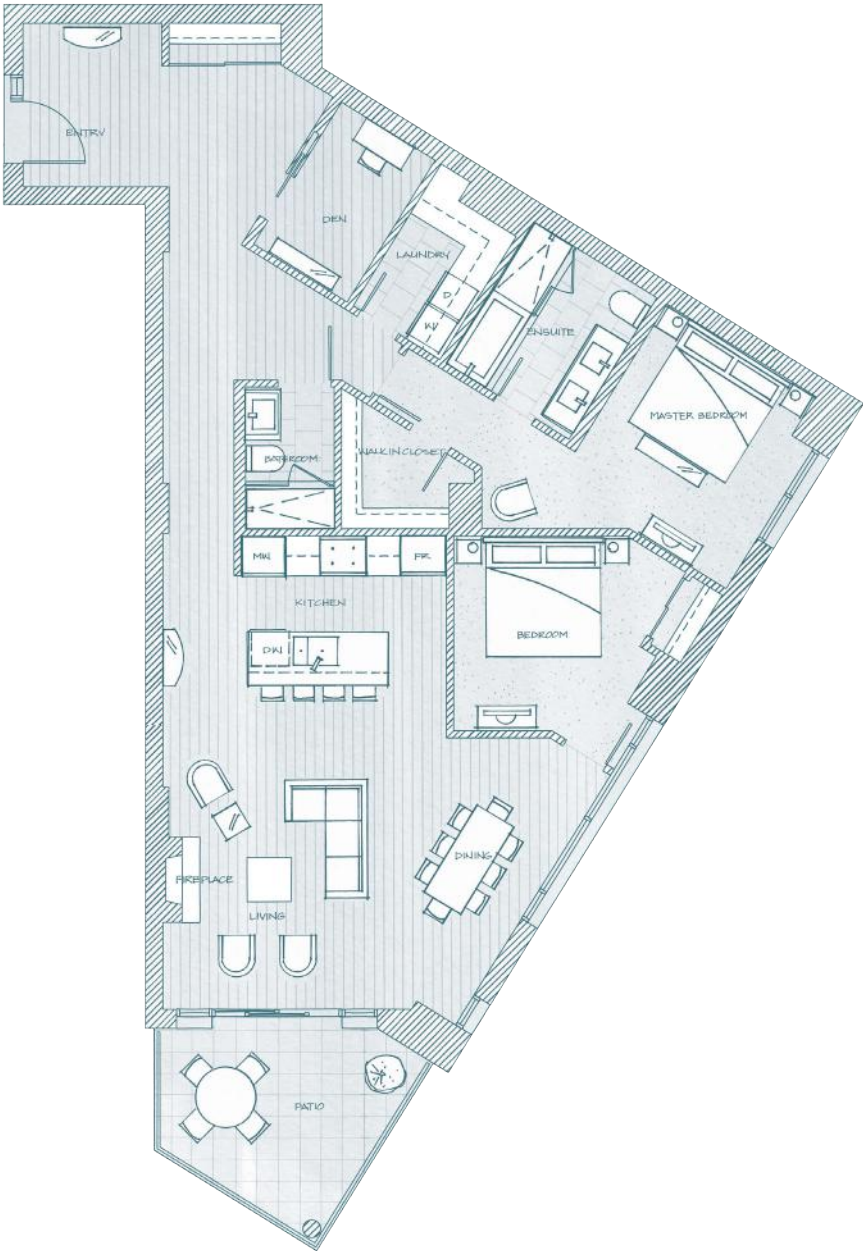


HORSESHOE BAY



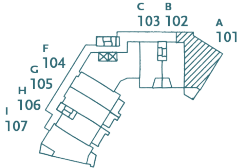
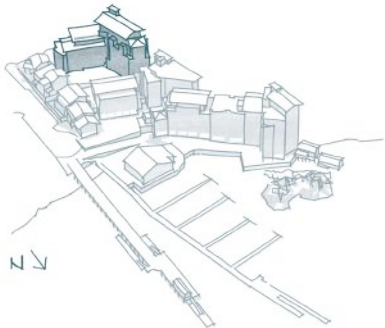
FOREST VILLAS PLAN A

2 Bedroom + Den / 1,764 sf Total Living
Patio 138 sf



FOREST VILLAS

FLOOR 1



WEST
VANCOUVER
CANADA

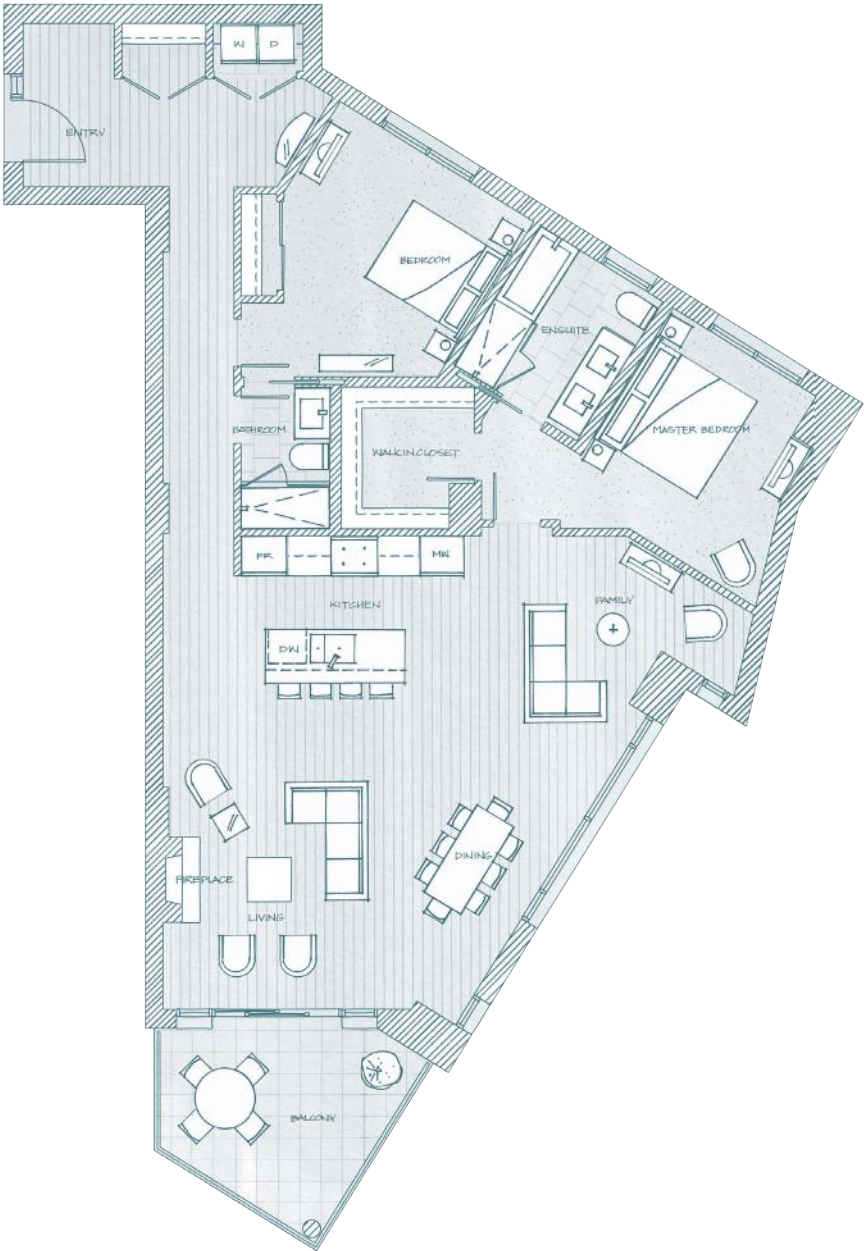
Dimensions, sizes, specifications, layouts and materials are approximate only and subject to change without notice. E.&O.E.

HORSESHOE BAY



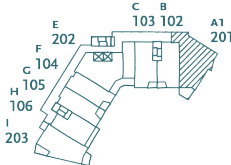
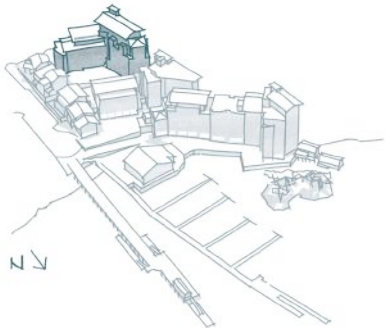
FOREST VILLAS PLAN A1

2 Bedroom + Family / 1,775 sf Total Living
Balcony 131 sf



FOREST VILLAS

FLOOR 2



WEST
VANCOUVER
CANADA

Dimensions, sizes, specifications, layouts and materials are approximate only and subject to change without notice. E.&O.E.

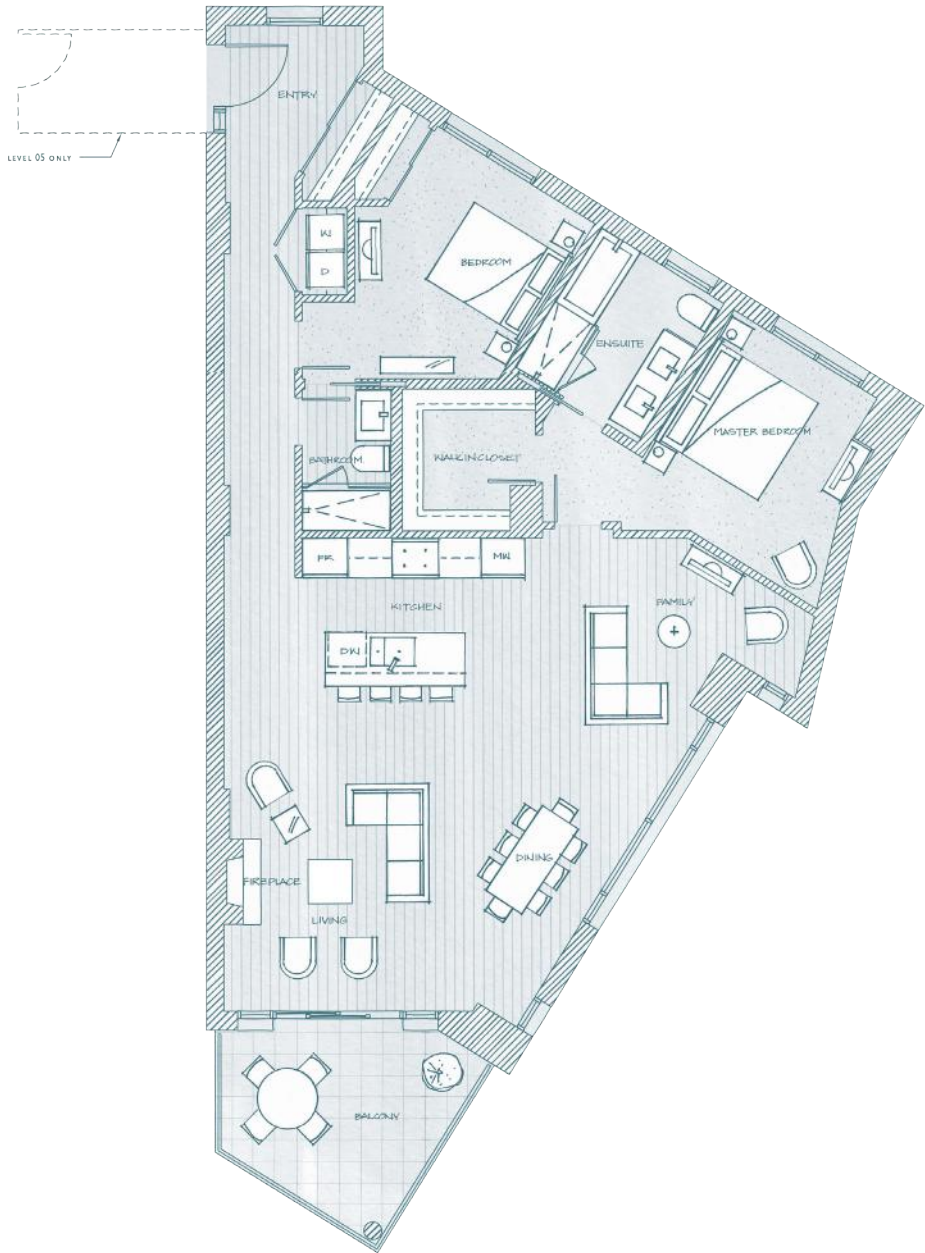
HORSESHOE BAY



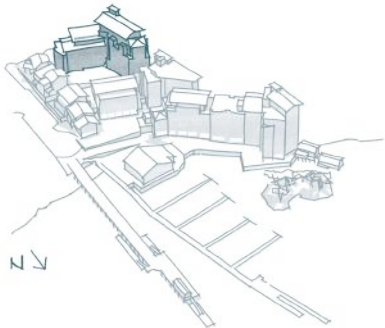
FOREST VILLAS PLAN A1A

2 Bedroom + Family / 1,689 - 1,783 sf Total Living

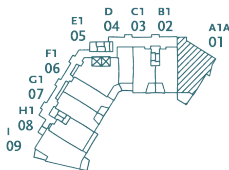
Balcony 131 - 225 sf



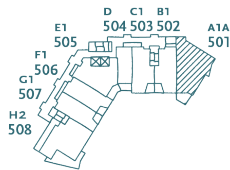
FOREST VILLAS



FLOOR 3 - 4



FLOOR 5



WEST
VANCOUVER
CANADA

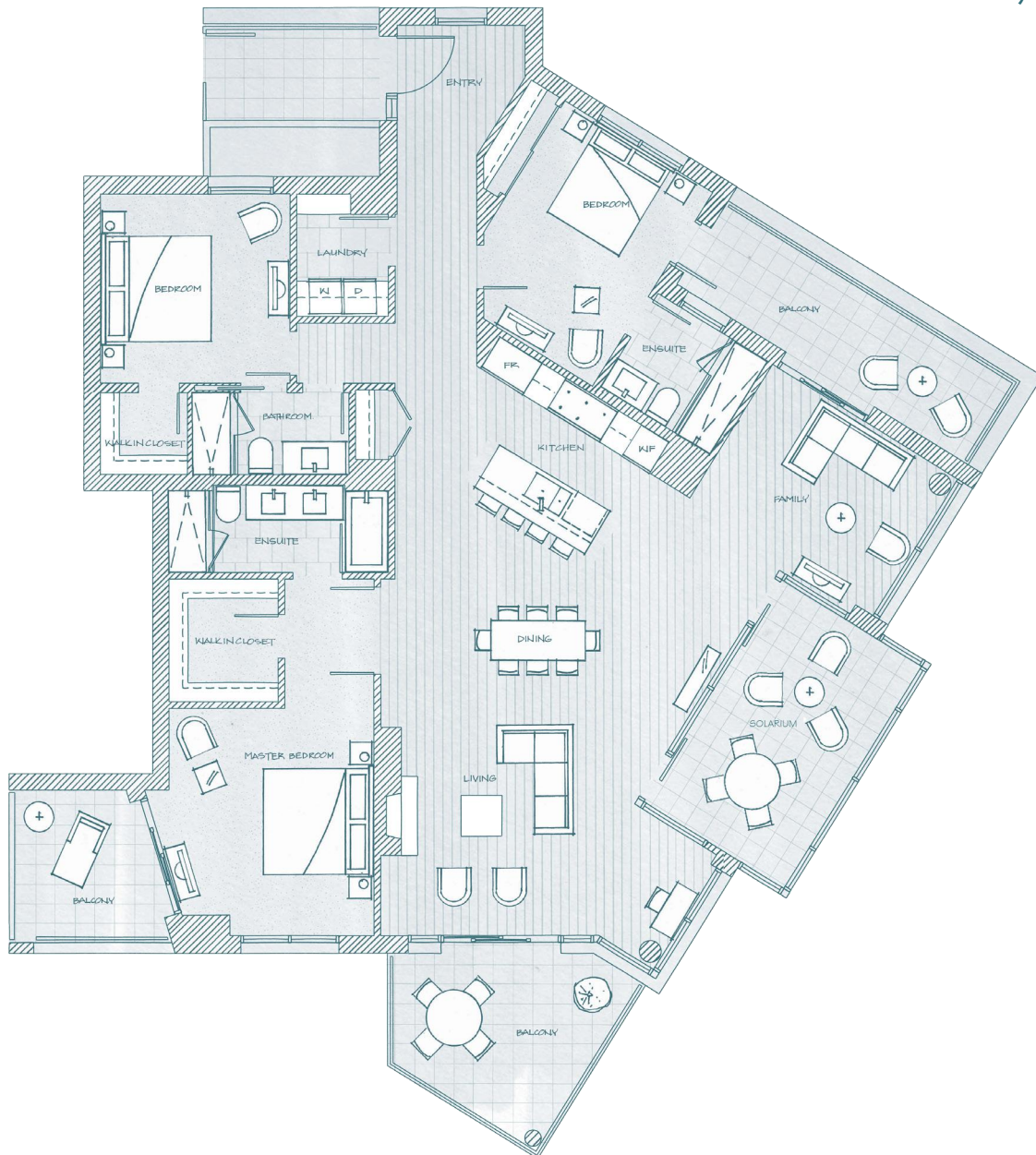
HORSESHOE BAY



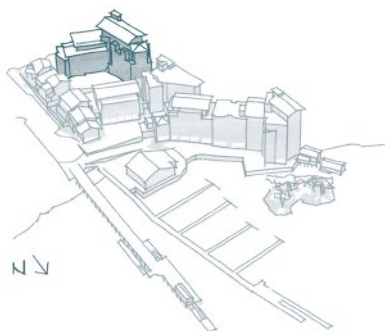
FOREST VILLAS PLAN A2

3 Bedroom + Family / 2,465 - 2,599 sf Total Living

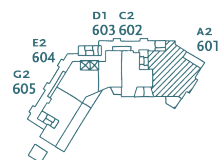
Balcony 321 - 440 sf



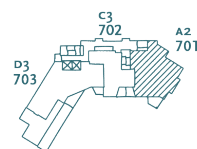
FOREST VILLAS



FLOOR 6



FLOOR 7



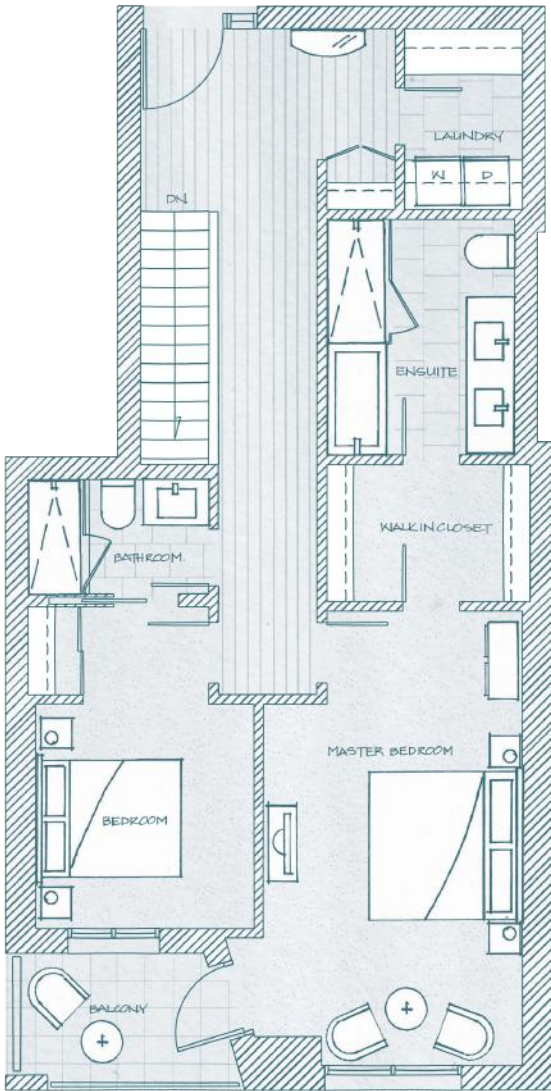
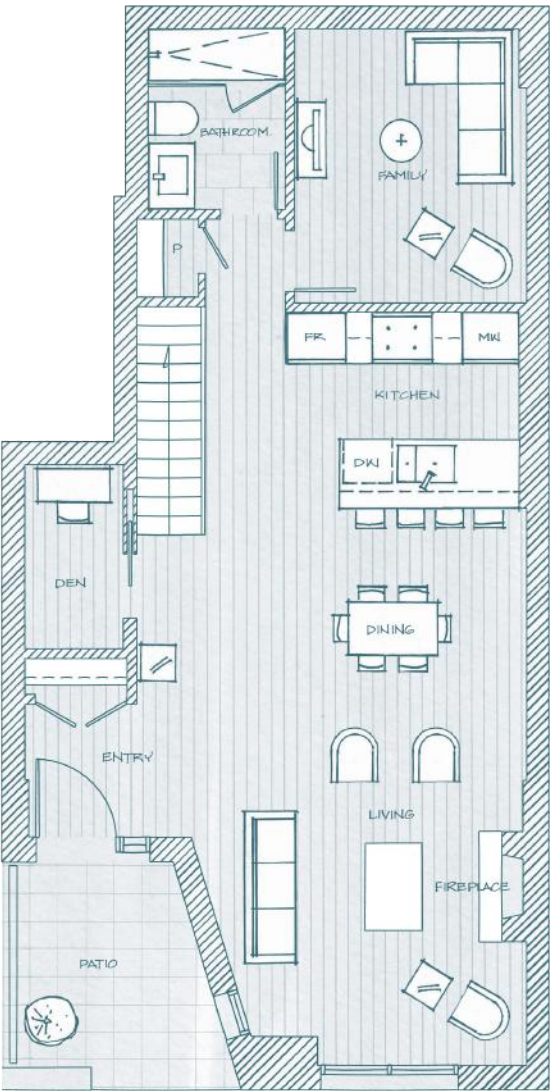
WEST
VANCOUVER
CANADA

HORSESHOE BAY



FOREST VILLAS PLAN B

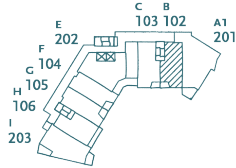
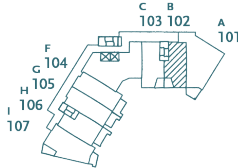
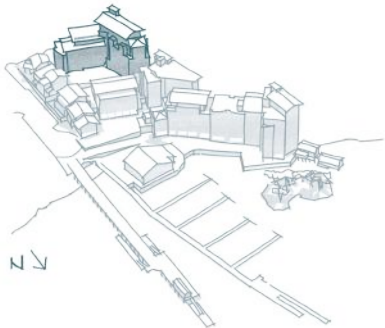
2 Bedroom + Family / 2,009 sf Total Living
Patio + Balcony 140 sf



FOREST VILLAS

FLOOR 1

FLOOR 2



WEST
VANCOUVER
CANADA

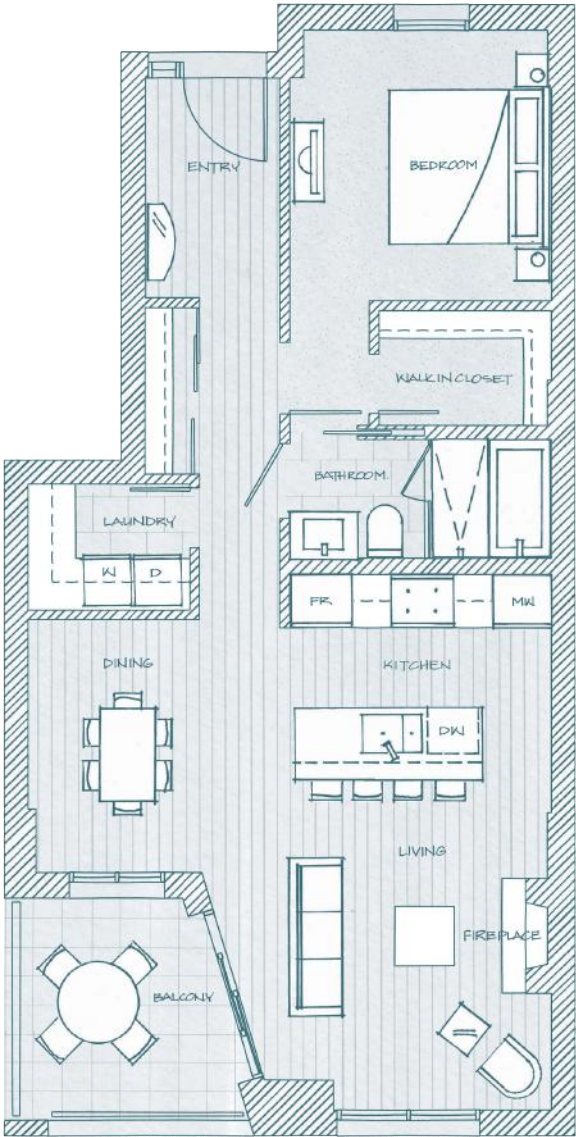
Dimensions, sizes, specifications, layouts and materials are approximate only and subject to change without notice. E.&O.E.

HORSESHOE BAY

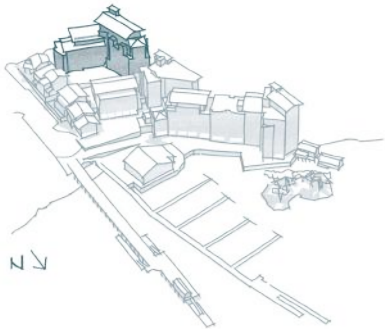


FOREST VILLAS PLAN B1

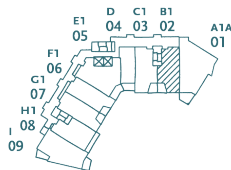
1 Bedroom / 990 sf Total Living
Balcony 85 sf



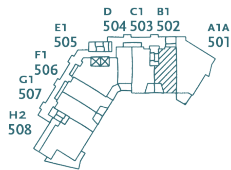
FOREST VILLAS



FLOOR 3 - 4



FLOOR 5



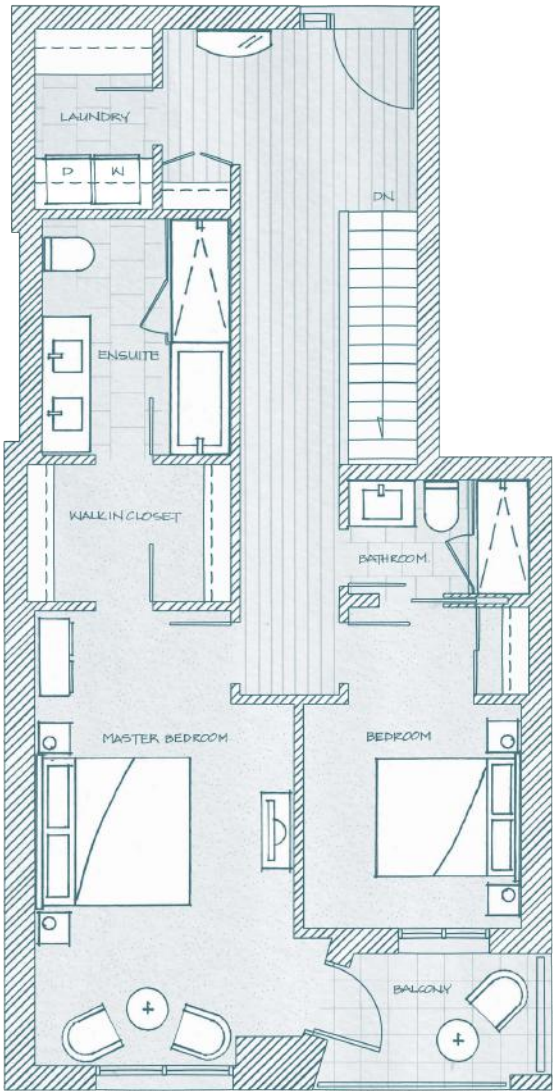
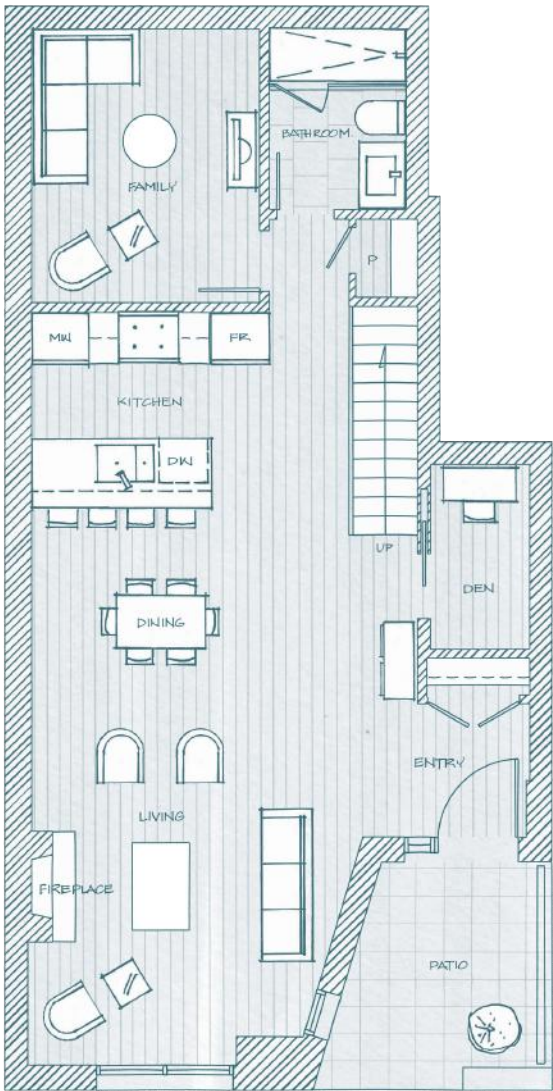
WEST
VANCOUVER
CANADA

HORSESHOE BAY



FOREST VILLAS PLAN C

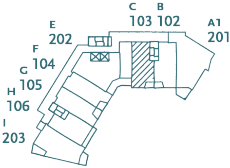
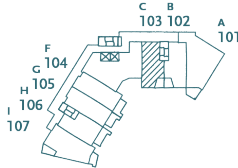
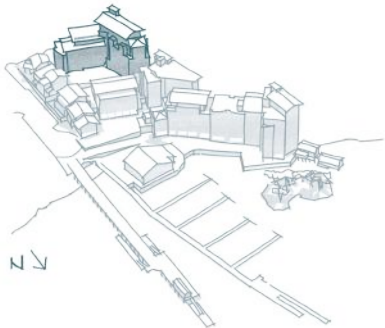
2 Bedroom + Family / 2,066 sf Total Living
Patio + Balcony 140 sf



FOREST VILLAS

FLOOR 1

FLOOR 2



WEST
VANCOUVER
CANADA

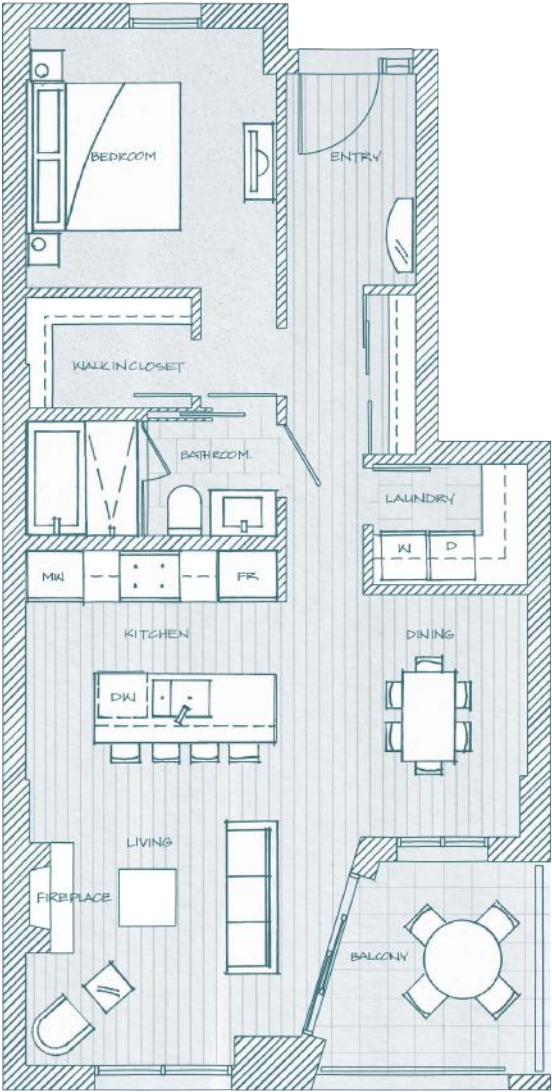
Dimensions, sizes, specifications, layouts and materials are approximate only and subject to change without notice. E.&O.E.

HORSESHOE BAY

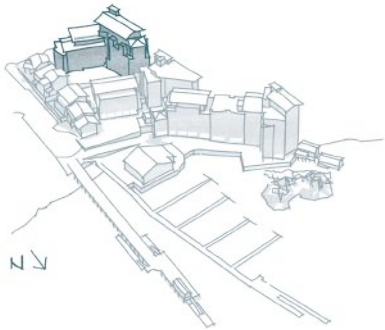


FOREST VILLAS PLAN C1

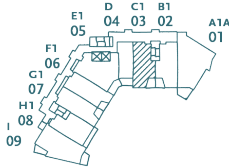
1 Bedroom / 995 sf Total Living
Balcony 85 sf



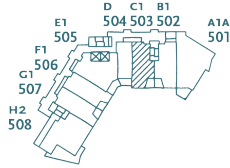
FOREST VILLAS



FLOOR 3 - 4



FLOOR 5



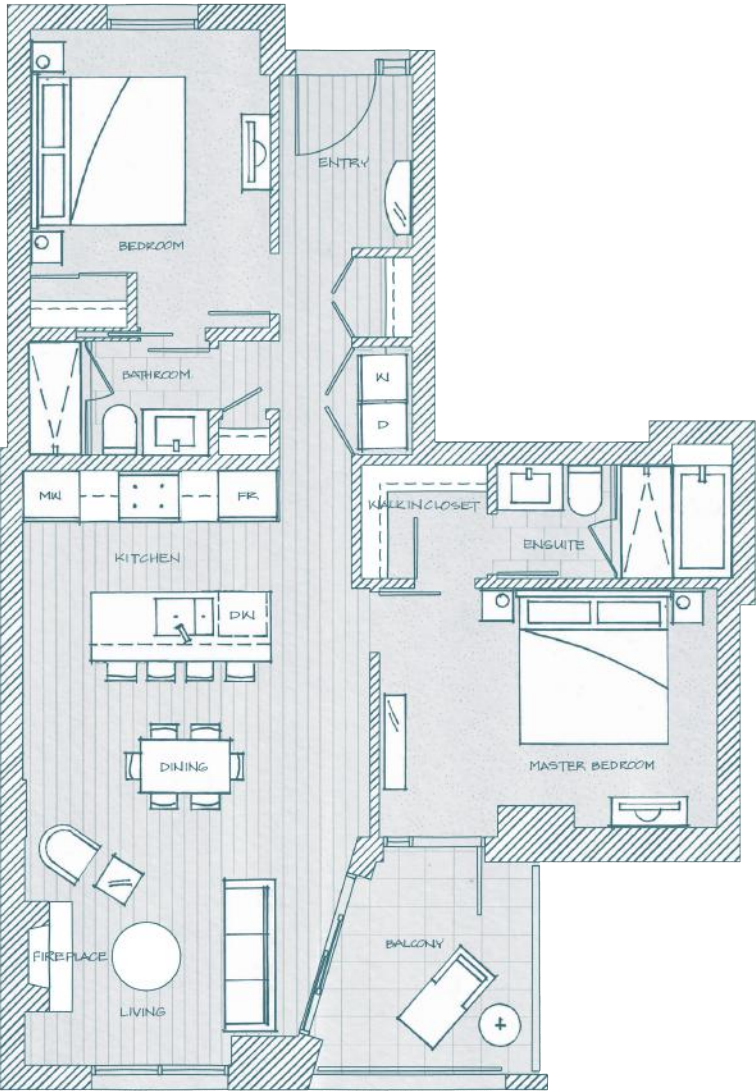
WEST
VANCOUVER
CANADA

HORSESHOE BAY



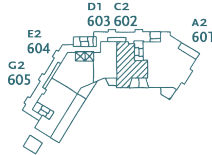
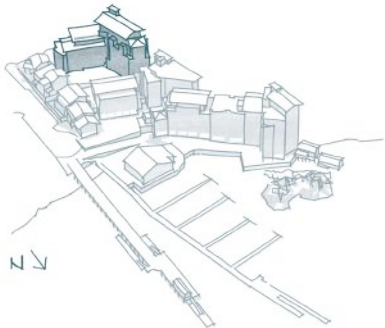
FOREST VILLAS PLAN C2

2 Bedroom / 1,163 sf Total Living
Balcony 85 sf



FOREST VILLAS

FLOOR 6



WEST
VANCOUVER
CANADA

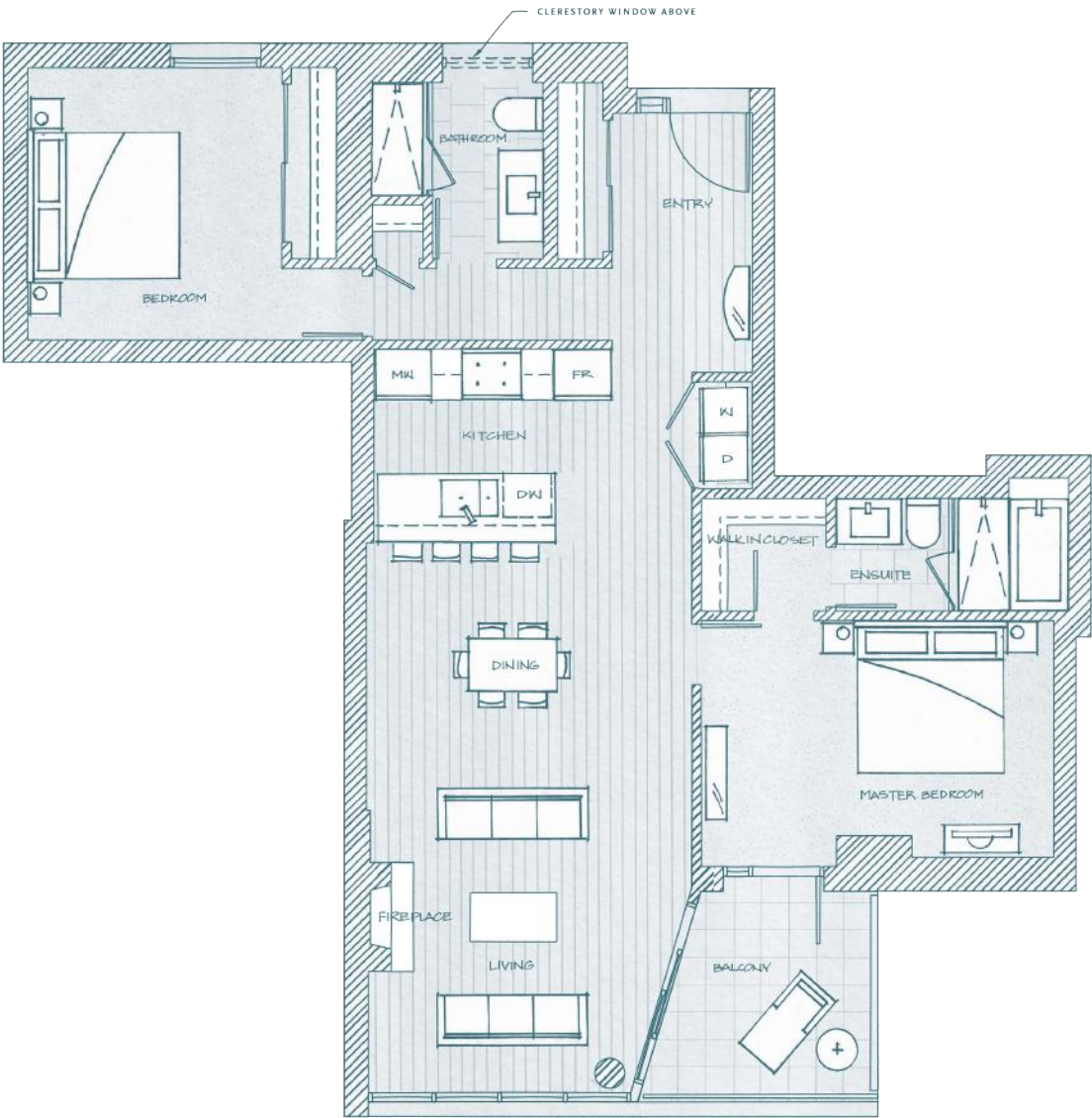
Dimensions, sizes, specifications, layouts and materials are approximate only and subject to change without notice. E.&O.E.

HORSESHOE BAY

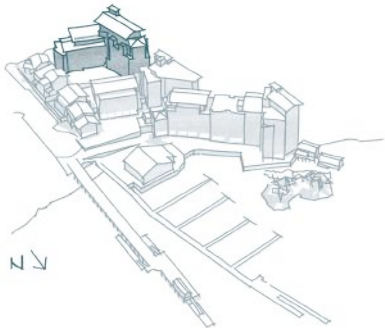


FOREST VILLAS PLAN C3

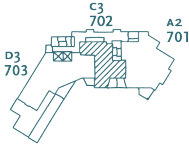
2 Bedroom / 1,360 sf Total Living
Balcony 89 sf



FOREST VILLAS



FLOOR 7



WEST
VANCOUVER
CANADA

Dimensions, sizes, specifications, layouts and materials are approximate only and subject to change without notice. E.&O.E.

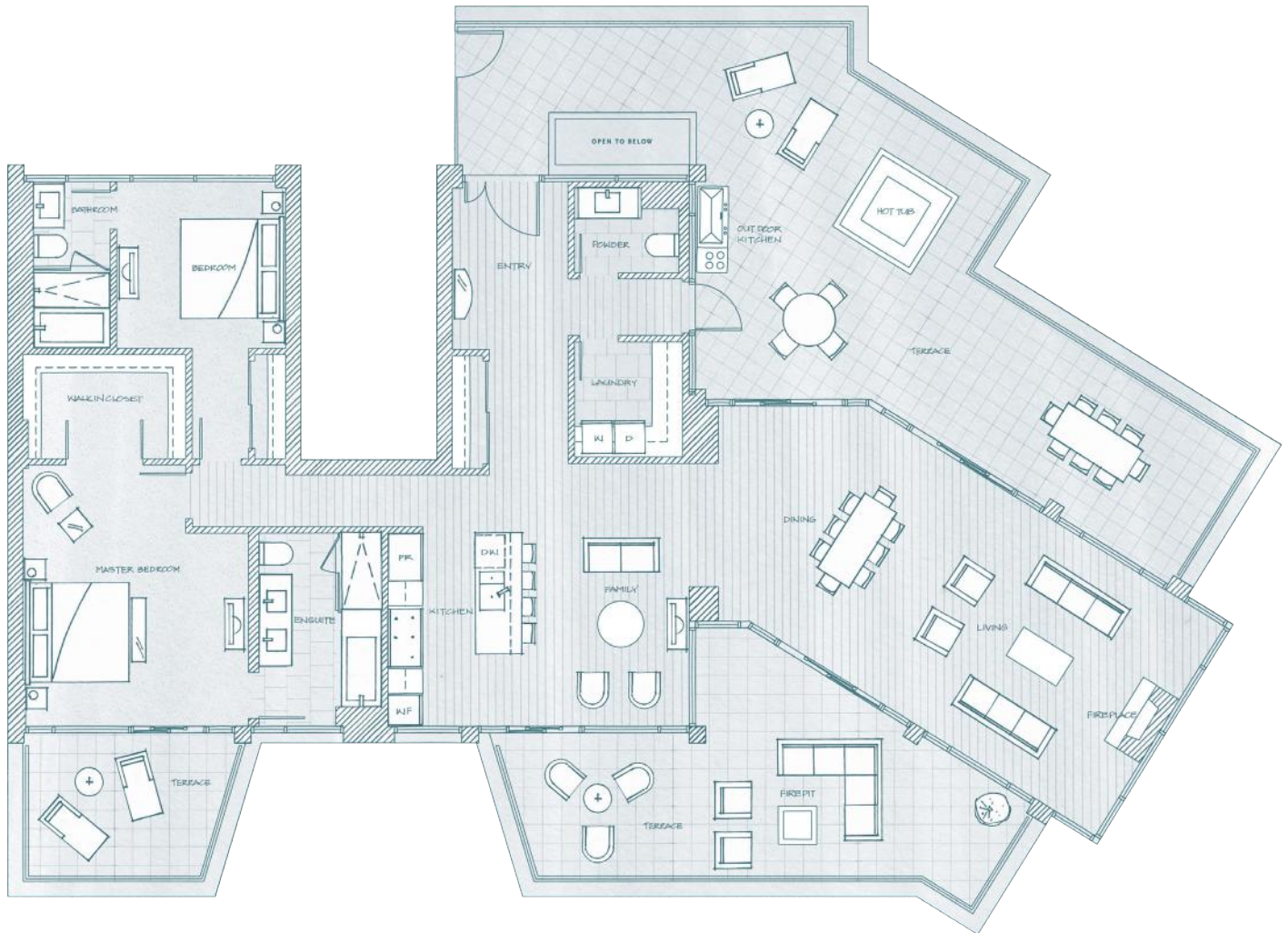
HORSESHOE BAY



FOREST VILLAS PLAN C4

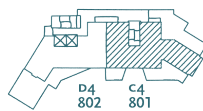
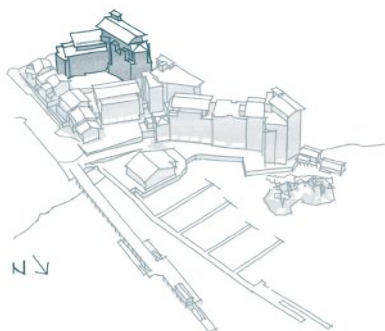
2 Bedroom + Family / 3,252 sf Total Living

Terrace 1,250 sf



FOREST VILLAS

FLOOR 8



WEST
VANCOUVER
CANADA

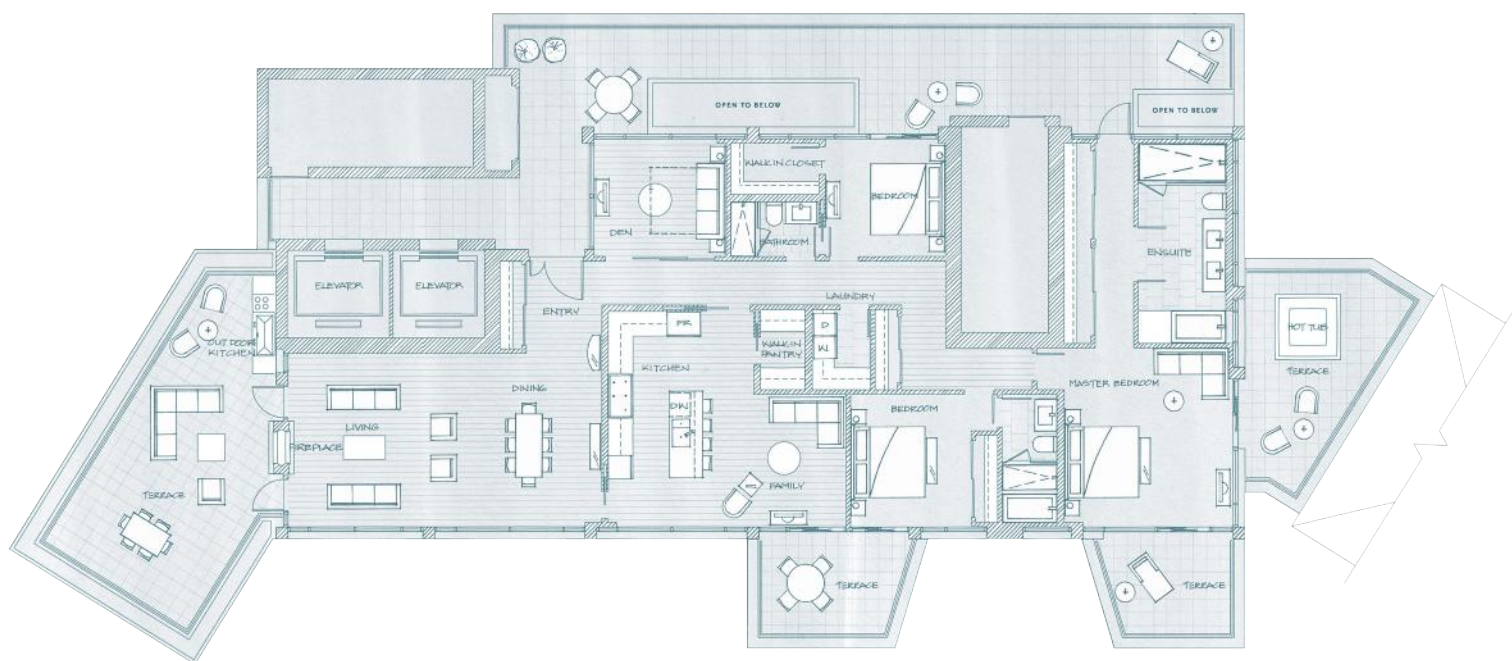
HORSESHOE BAY



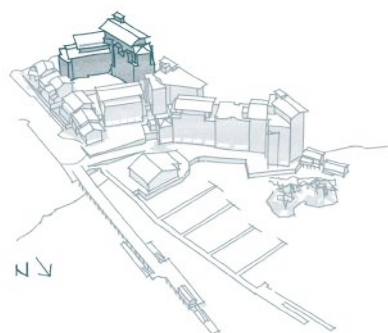
FOREST VILLAS PENTHOUSE C6

3 Bedroom + Family + Den / 4,359 sf Total Living

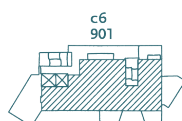
Terrace 1,748 sf



FOREST VILLAS



FLOOR 9



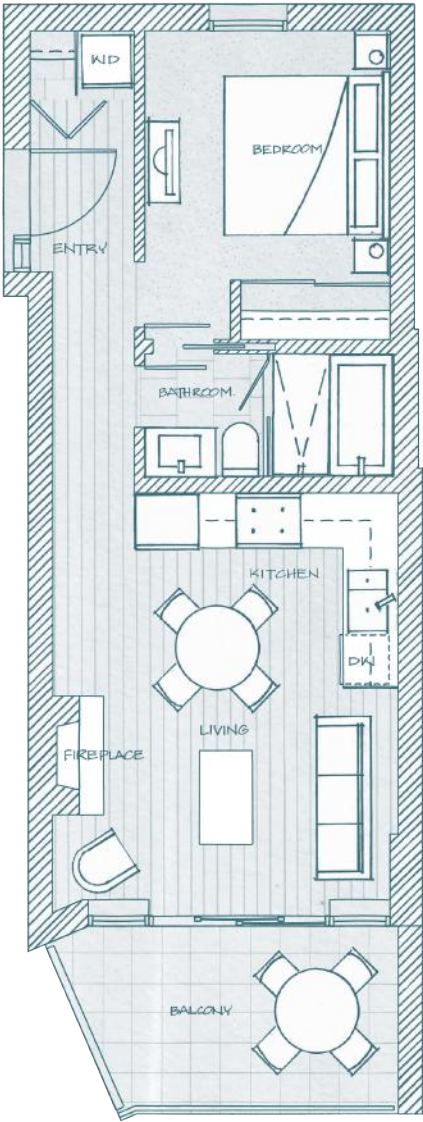
**WEST
VANCOUVER
CANADA**

HORSESHOE BAY

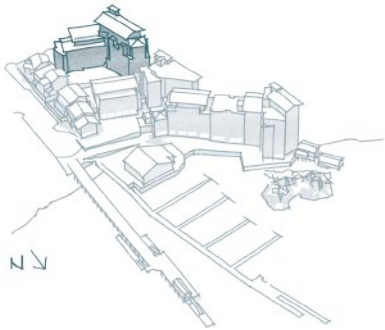


FOREST VILLAS PLAN D

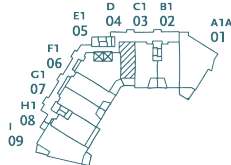
1 Bedroom / 680 sf Total Living
Balcony 101 sf



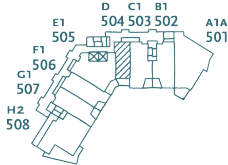
FOREST VILLAS



FLOOR 3 - 4



FLOOR 5



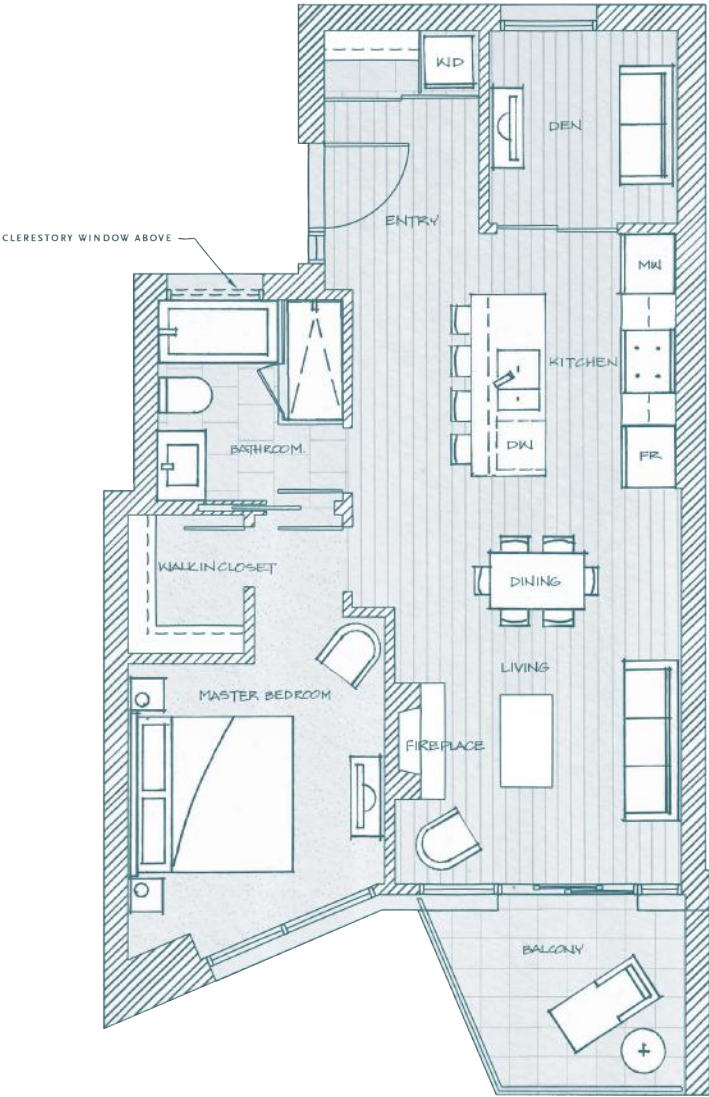
WEST
VANCOUVER
CANADA

HORSESHOE BAY

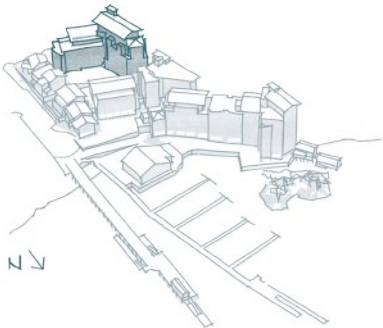


FOREST VILLAS PLAN D1

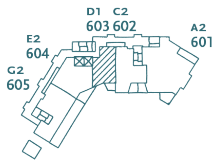
1 Bedroom + Den / 909 sf Total Living
Balcony 83 sf



FOREST VILLAS



FLOOR 6



WEST
VANCOUVER
CANADA

Dimensions, sizes, specifications, layouts and materials are approximate only and subject to change without notice. E.&O.E.

HORSESHOE BAY



FOREST VILLAS PLAN D3

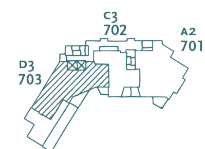
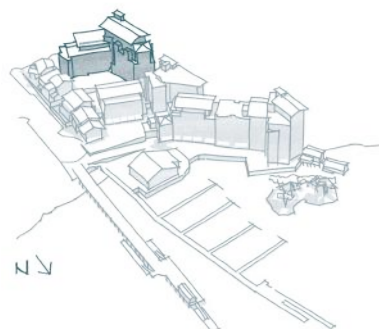
3 Bedroom + Family / 3,028 sf Total Living

Terrace + Balcony 804 sf



FOREST VILLAS

FLOOR 7



**WEST
VANCOUVER
CANADA**

HORSESHOE BAY



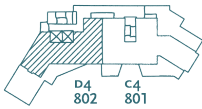
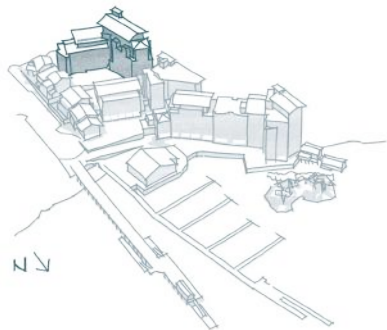
FOREST VILLAS PLAN D4

2 Bedroom + Family / 2,331 sf Total Living
Terrace 727 sf



FOREST VILLAS

FLOOR 8



WEST
VANCOUVER
CANADA

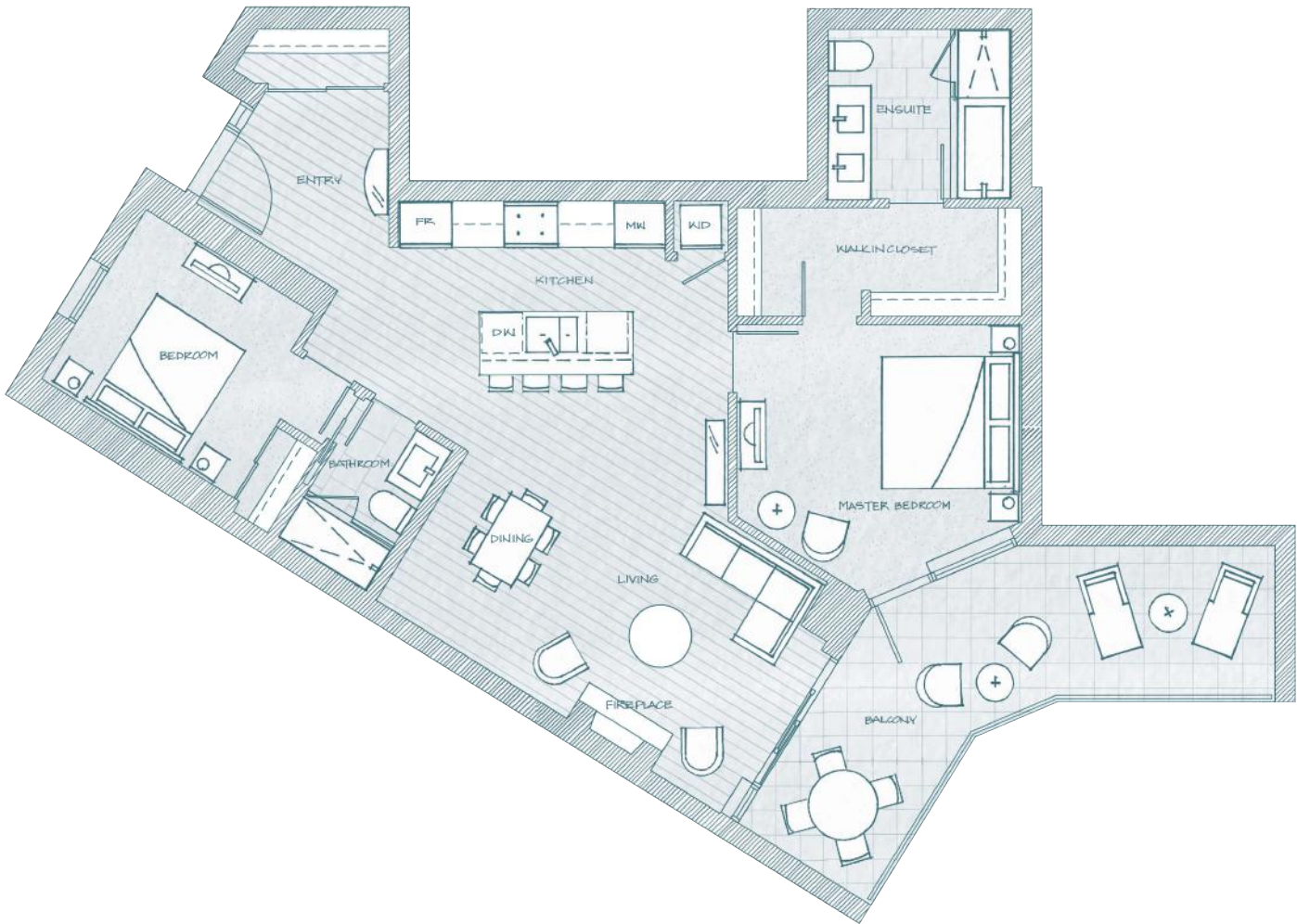
Dimensions, sizes, specifications, layouts and materials are approximate only and subject to change without notice. E.&O.E.

HORSESHOE BAY



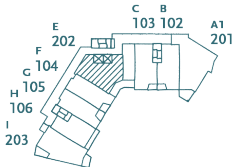
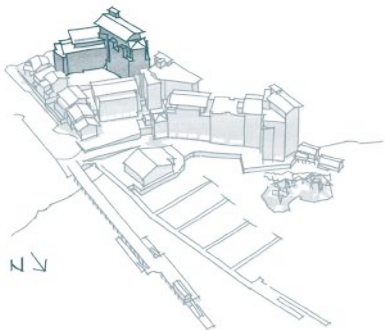
FOREST VILLAS PLAN E

2 Bedroom / 1,466 sf Total Living
Balcony 233 sf



FOREST VILLAS

FLOOR 2



WEST
VANCOUVER
CANADA

Dimensions, sizes, specifications, layouts and materials are approximate only and subject to change without notice. E.&O.E.

HORSESHOE BAY

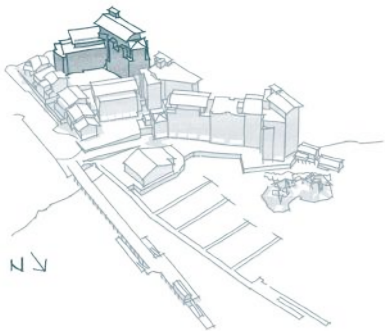


FOREST VILLAS PLAN E1

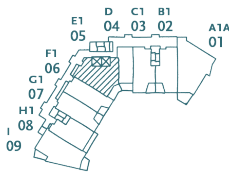
2 Bedroom / 1,281 sf
Balcony 131 sf



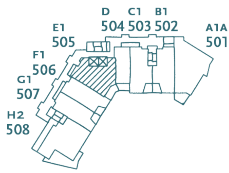
FOREST VILLAS



FLOOR 3 - 4



FLOOR 5



WEST
VANCOUVER
CANADA

HORSESHOE BAY



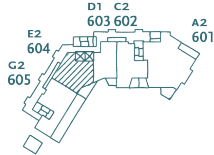
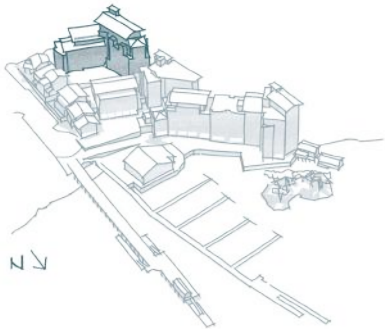
FOREST VILLAS PLAN E2

2 Bedroom / 1,249 sf Total Living
Balcony 152 sf



FOREST VILLAS

FLOOR 6



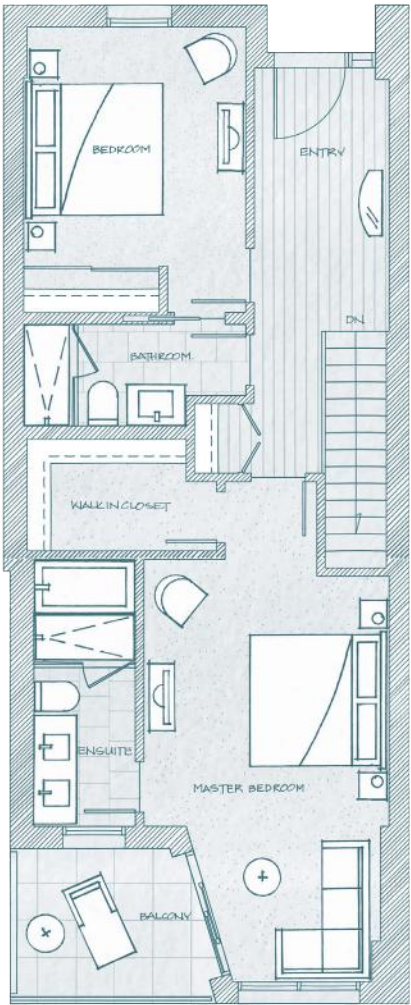
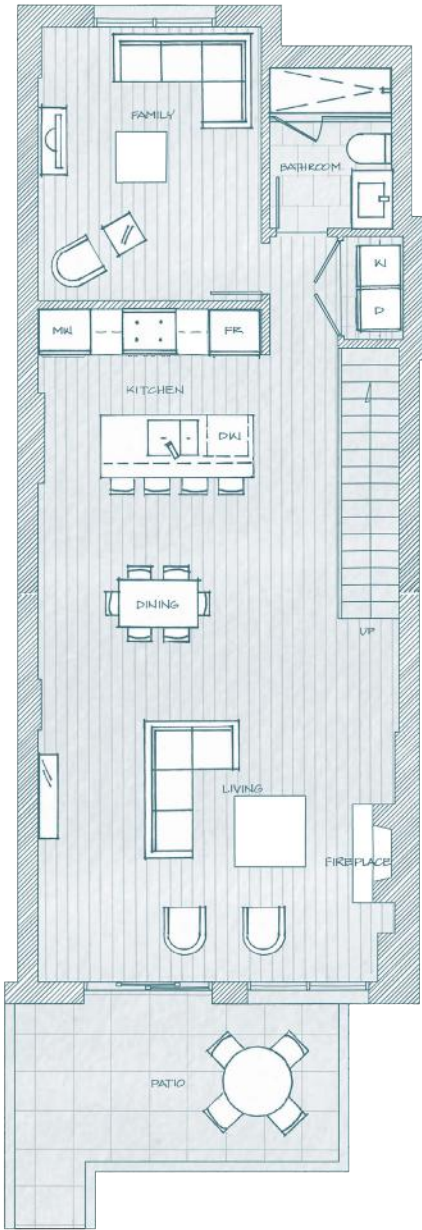
WEST
VANCOUVER
CANADA

HORSESHOE BAY



FOREST VILLAS PLAN F

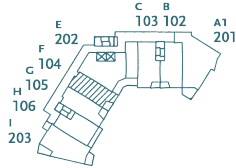
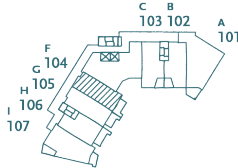
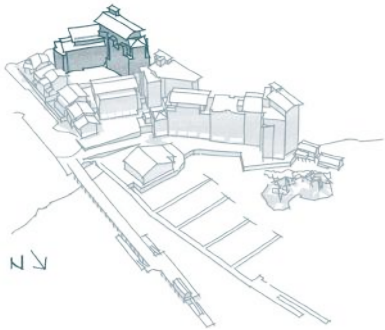
2 Bedroom + Family / 1,985 sf Total Living
Patio + Balcony 213 sf



FOREST VILLAS

FLOOR 1

FLOOR 2



WEST
VANCOUVER
CANADA

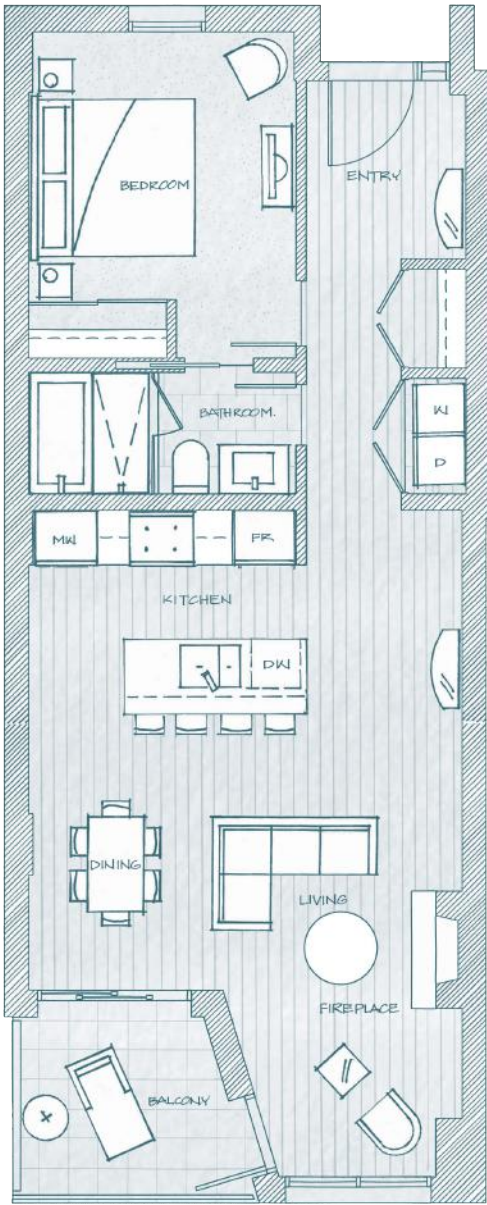
Dimensions, sizes, specifications, layouts and materials are approximate only and subject to change without notice. E.&O.E.

HORSESHOE BAY

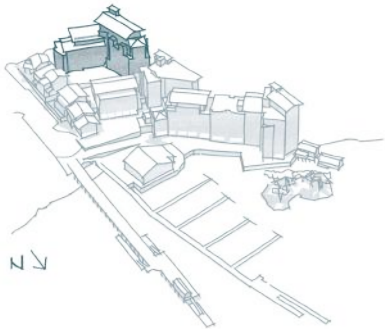


FOREST VILLAS PLAN F1

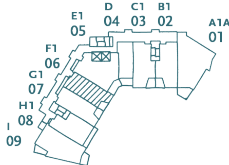
1 Bedroom / 905 - 920 sf Total Living
Balcony 68 sf



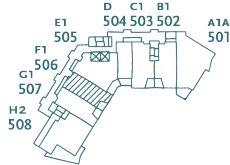
FOREST VILLAS



FLOOR 3 - 4



FLOOR 5



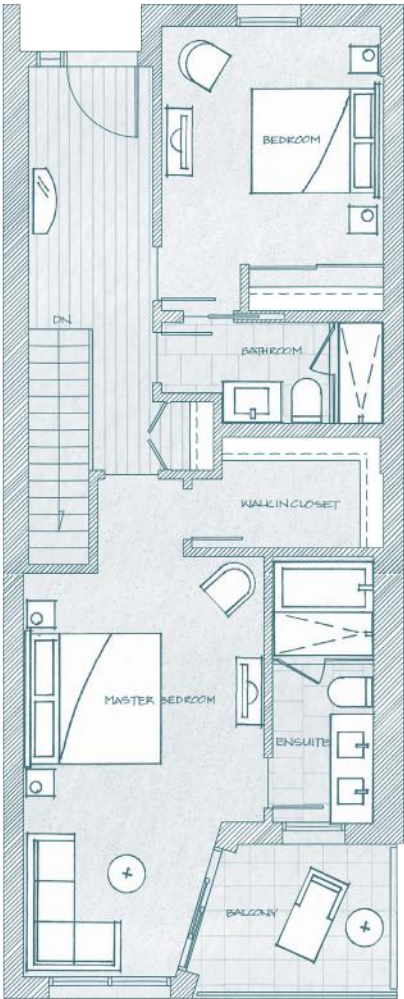
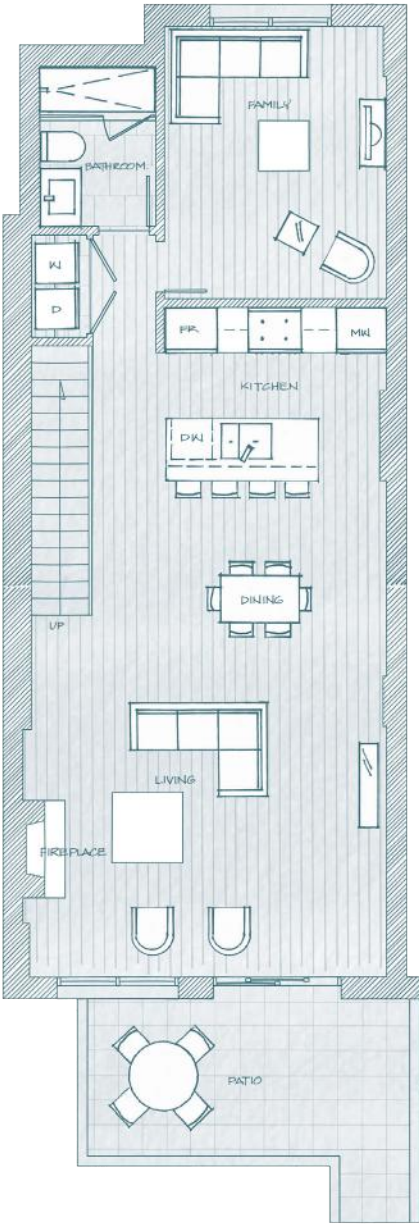
WEST
VANCOUVER
CANADA

HORSESHOE BAY



FOREST VILLAS PLAN G

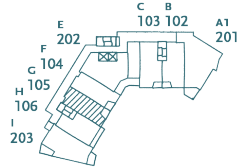
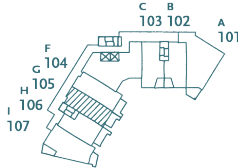
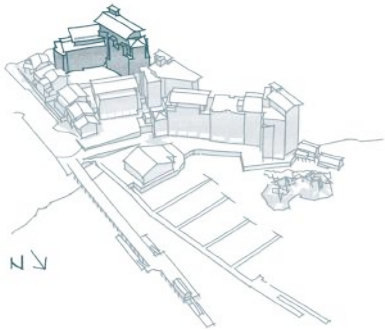
2 Bedroom + Family / 1,982 sf Total Living
Patio + Balcony 211 sf



FOREST VILLAS

FLOOR 1

FLOOR 2



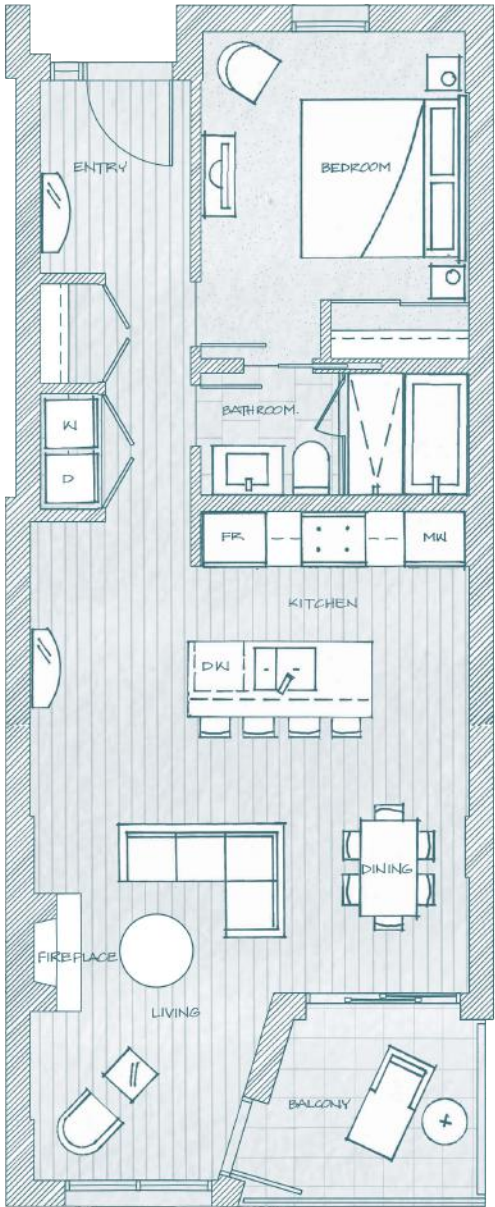
WEST
VANCOUVER
CANADA

HORSESHOE BAY

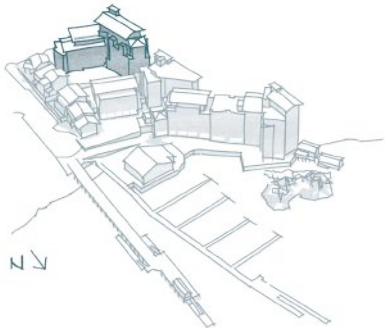


FOREST VILLAS PLAN G1

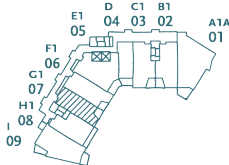
1 Bedroom / 908 - 920 sf Total Living
Balcony 65 sf



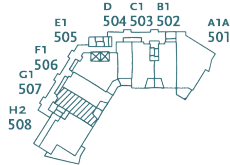
FOREST VILLAS



FLOOR 3 - 4



FLOOR 5



WEST
VANCOUVER
CANADA

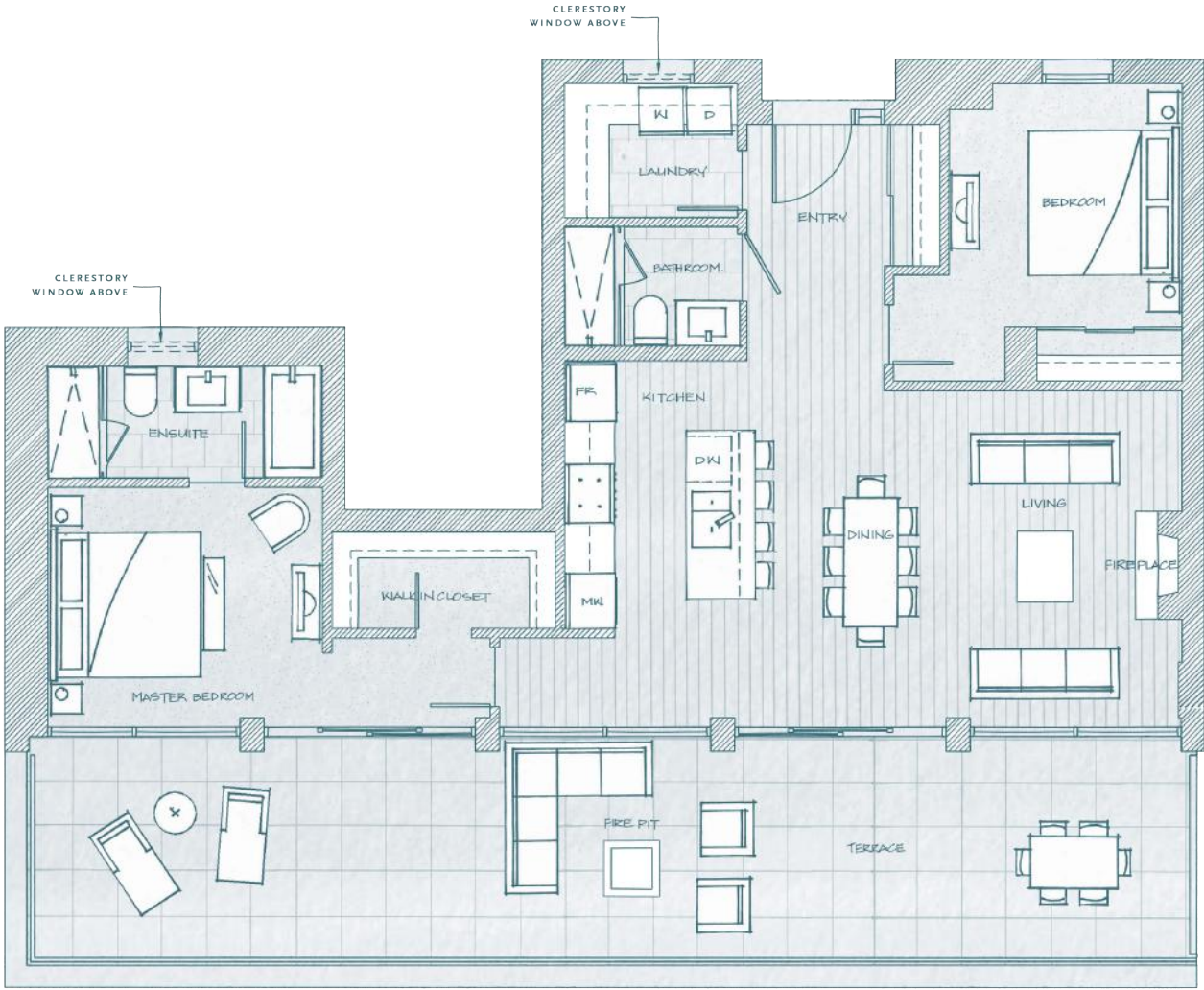
Dimensions, sizes, specifications, layouts and materials are approximate only and subject to change without notice. E.&O.E.

HORSESHOE BAY

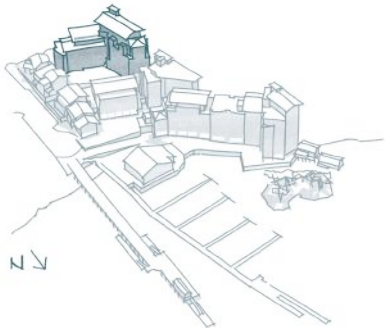


FOREST VILLAS PLAN G2

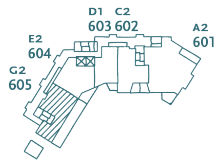
2 Bedroom / 1,779 sf Total Living
Terrace 547 sf



FOREST VILLAS



FLOOR 6



WEST
VANCOUVER
CANADA

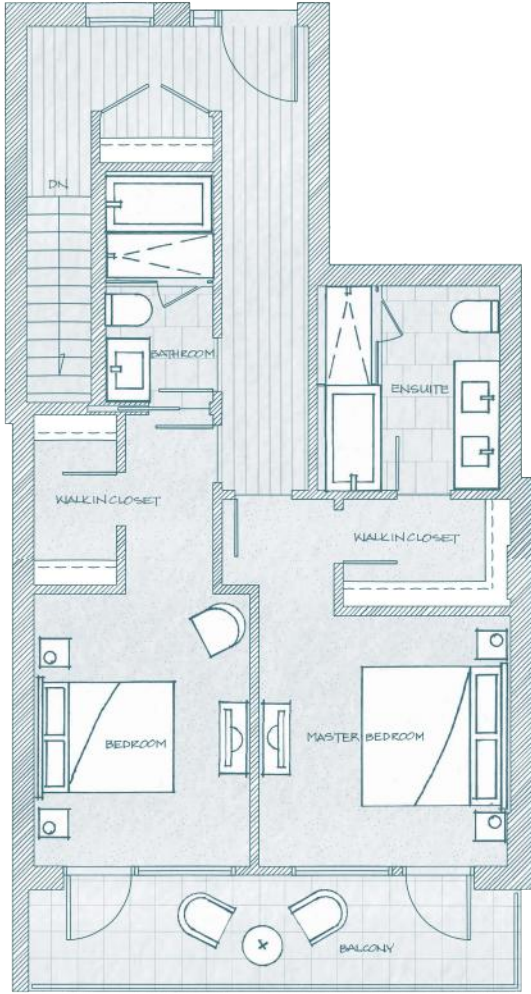
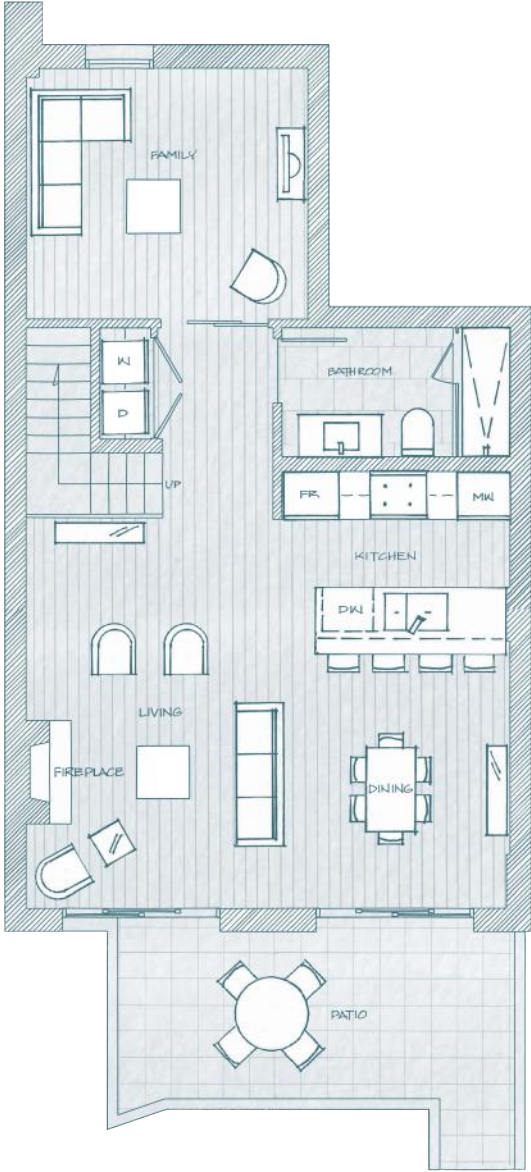
Dimensions, sizes, specifications, layouts and materials are approximate only and subject to change without notice. E.&O.E.

HORSESHOE BAY



FOREST VILLAS PLAN H

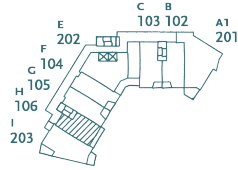
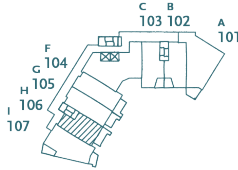
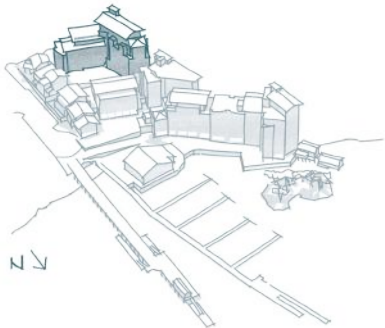
2 Bedroom + Family / 1,995 sf Total Living
Patio + Balcony 282 sf



FOREST VILLAS

FLOOR 1

FLOOR 2



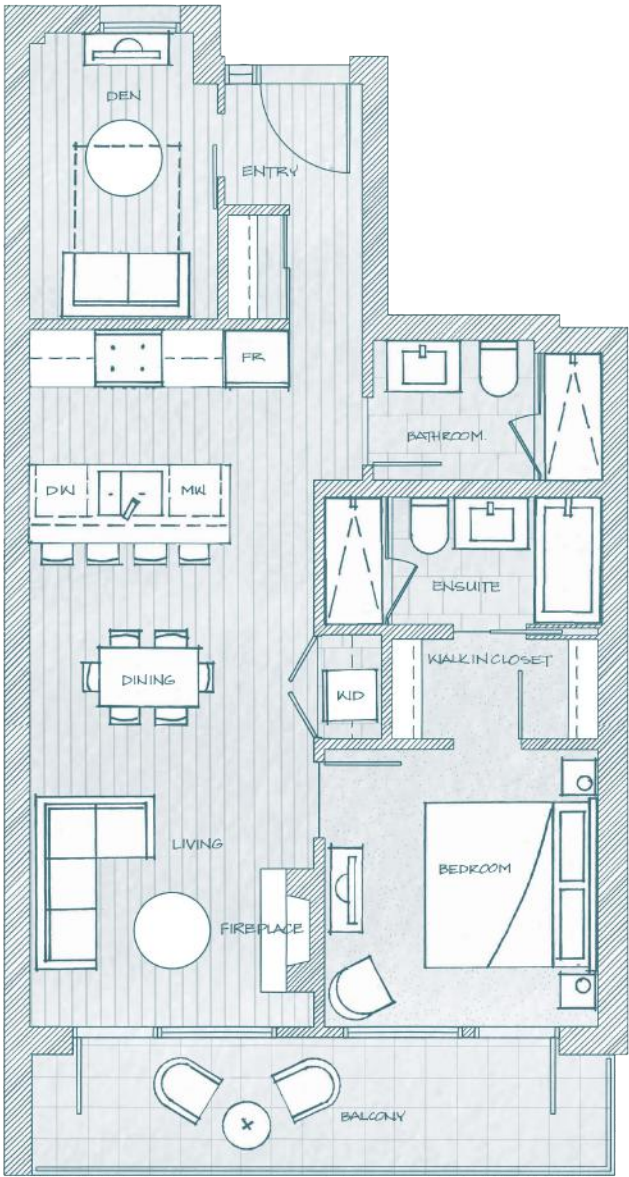
WEST
VANCOUVER
CANADA

HORSESHOE BAY

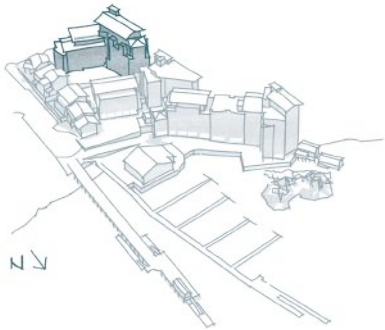


FOREST VILLAS PLAN H1

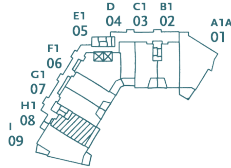
1 Bedroom + Den / 956 sf Total Living
Balcony 109 sf



FOREST VILLAS



FLOOR 3 - 4



WEST
VANCOUVER
CANADA

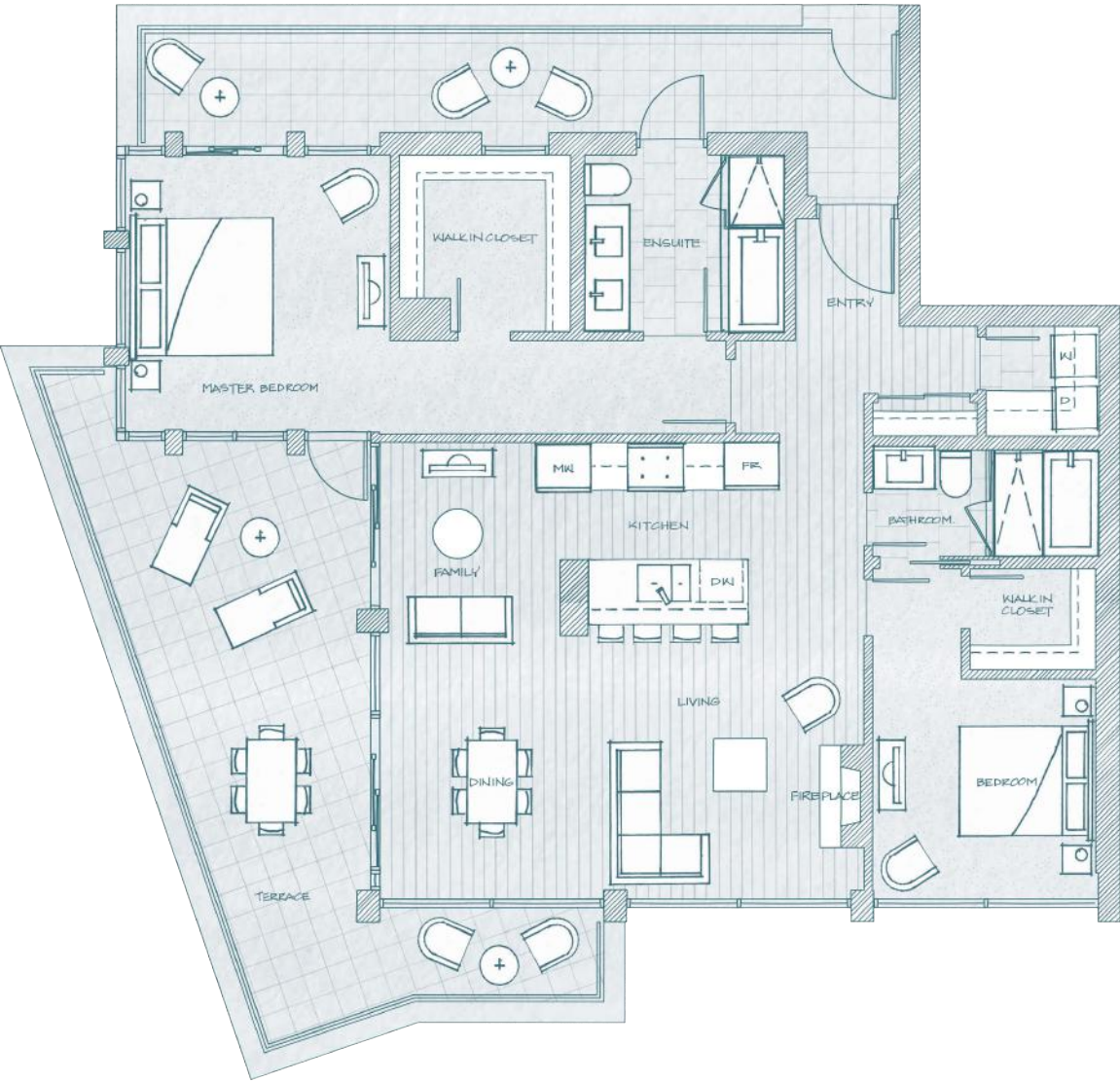
Dimensions, sizes, specifications, layouts and materials are approximate only and subject to change without notice. E.&O.E.

HORSESHOE BAY



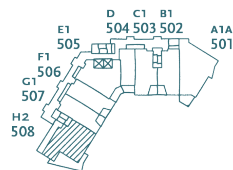
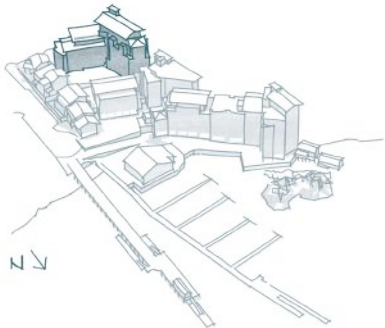
FOREST VILLAS PLAN H2

2 Bedroom + Family / 1,898 sf Total Living
Terrace 568 sf



FOREST VILLAS

FLOOR 5



WEST
VANCOUVER
CANADA

Dimensions, sizes, specifications, layouts and materials are approximate only and subject to change without notice. E.&O.E.

HORSESHOE BAY

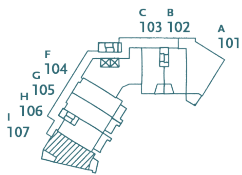


FOREST VILLAS PLAN I

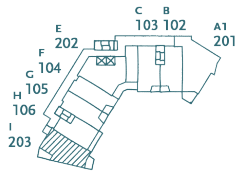
2 Bedroom / 1,337 sf - 1,357 sf Total Living

Patio + Balcony 205 - 239 sf

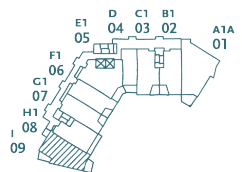
FLOOR 1



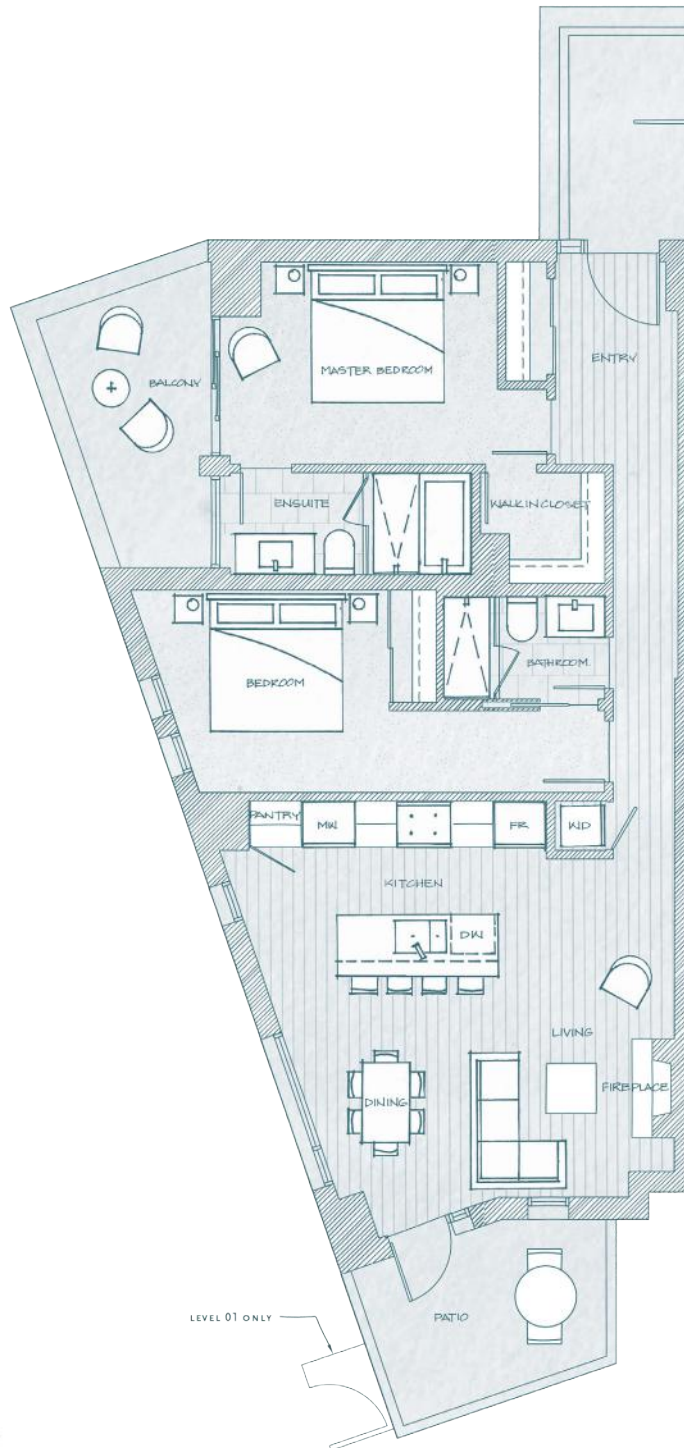
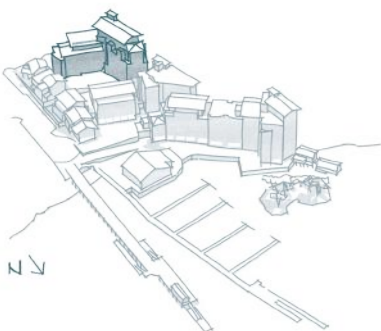
FLOOR 2



FLOOR 3 - 4



FOREST VILLAS



WEST
VANCOUVER
CANADA