

SKIN CANCER AWARENESS FOR BEAUTY PROFESSIONALS

Dr. Dean and Jeanne Braa Foster

Take course and earn the certificate at: <http://eyesoncancer.org>
Like, follow and share with us on Facebook at: Eyes on Cancer

BENEFIT OF SKIN CANCER'S EARLY DETECTION:

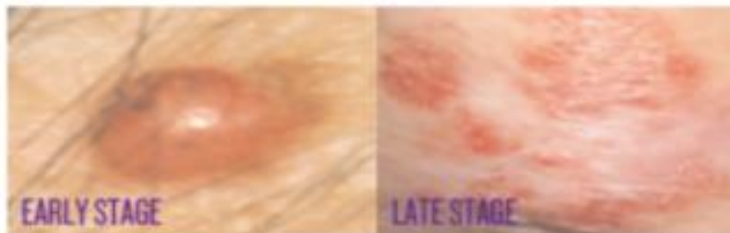
Risk of scarring and harm exists. However, if the cancer is found early by visual inspection and completely removed by a dermatologist, there is a good chance of cure for BCC and SCC and a >90% ten-year, disease free survival for MM.

SKIN CANCER TYPES:

Basal Cell Carcinoma: Spreads locally, treatable.



Squamous Cell Carcinoma: Spreads locally, treatable.



Malignant Melanoma: Deadly if caught late.

Asymmetry: one half doesn't match the other half
Border: irregular, rough, scalloped, indistinct
Color: uneven, multiple colors (black, brn. red, white, blue)
Diameter: increasing size, most more than ¼ inch
Evolving: melanoma changes, bothers, bleeds, grows.



For educational purposes only, consult your physician.
© Eyes On Cancer; For Free Copies: dfoster@eyesoncancer.org
Images Courtesy National Cancer Institute: www.cancer.gov

SKIN CANCER AWARENESS FOR BEAUTY PROFESSIONALS

Dr. Dean and Jeanne Braa Foster

Take course and earn the certificate at: <http://eyesoncancer.org>
Like, follow and share with us on Facebook at: Eyes on Cancer

MOLES VERSUS MELANOMA: THE ABCDE'S:

A: Asymmetry One side is different from the other.

Mole symmetrical



Melanoma asymmetrical



B: Border Smooth vs. Irregular border.

Mole smoother



Melanoma irregular



C: Color Uniform vs. Multicolored

Mole uniform color

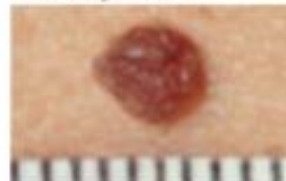


Melanoma multicolored



D: Diameter Size < 1/4 inch versus > 1/4 inch

Mole stays small



Melanoma grows > 1/4 inch



E: Evolution stable versus grows larger/spreads

Mole slow or no growth



Melanoma spreads out, down



For educational purposes only, consult your physician.
© Eyes On Cancer; For Free Copies: dfoster@eyesoncancer.org
Images Courtesy National Cancer Institute: www.cancer.gov