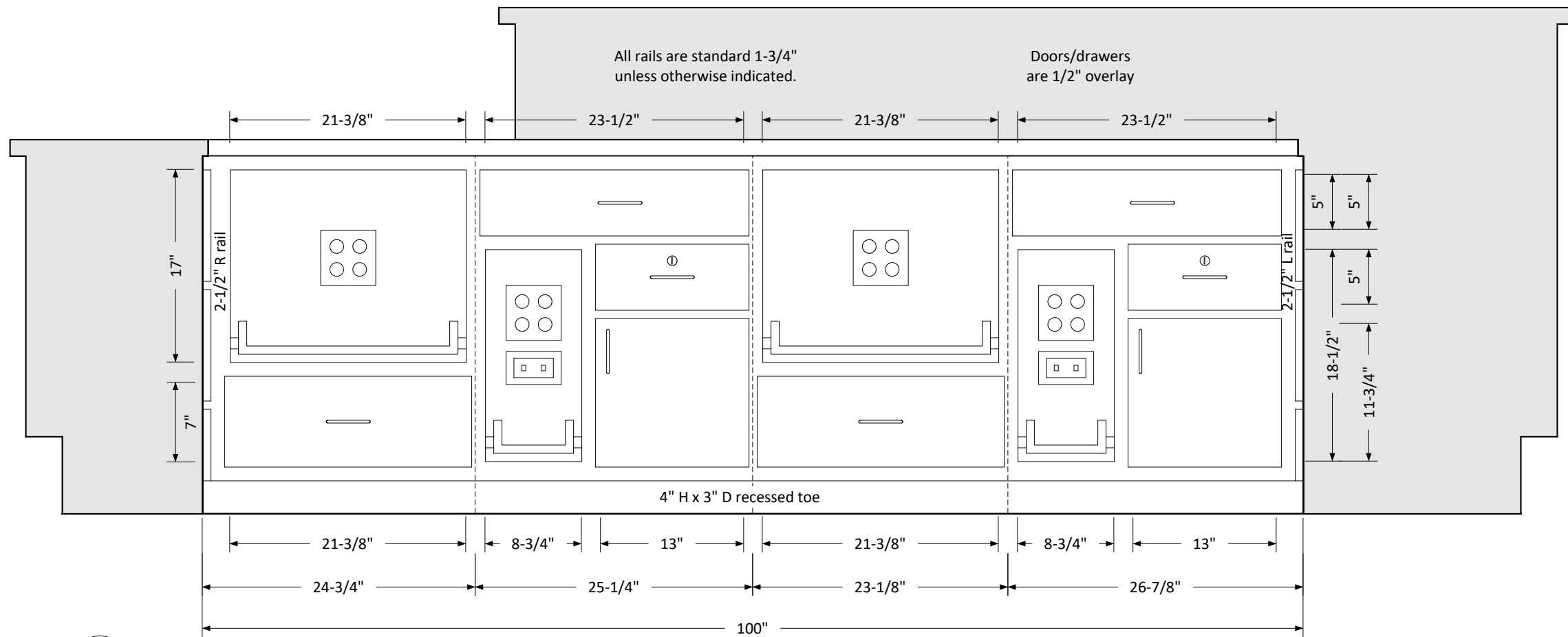


REVISIONS		REMARKS
MM/DD/YY	Original	
1	11/03/2016	Original
2	11/29/2016	Alternate Design
3		
4		
5		

Felver Custom Cabinets

Hampton Inn & Suites - Oakwood, OH

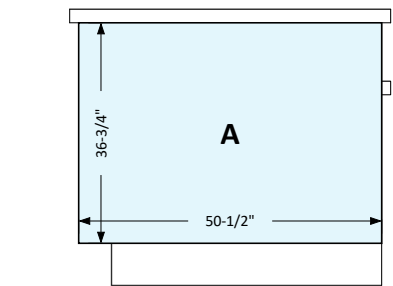
Dimensions shown are opening sizes.



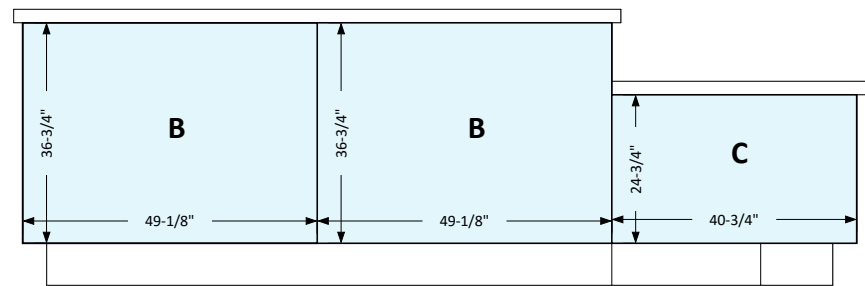
Pulls:
1-3/8 projection
BP87396195

ID-1 EMPLOYEE DESK OPENING DIMENSIONS

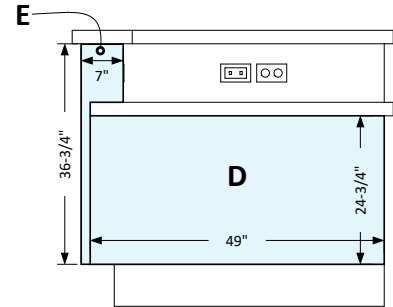
- Panel dimensions:
- A Qty: 1 panel - 50-1/2" x 36-3/4"
 - B Qty: 2 panels - 49-1/8" x 36-3/4"
 - C Qty: 1 panel - 40-3/4" x 24-3/4"
 - D Qty: 1 panel - 49" x 24-3/4"
 - E Qty: 1 panel - 7" x 36-3/4"



ID-2 PANEL DIMENSIONS



ID-3 PANEL DIMENSIONS



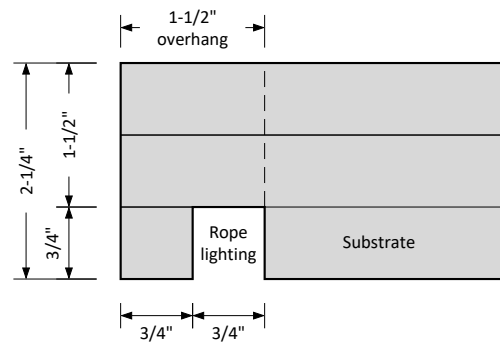
ID-4 PANEL DIMENSIONS

REVISIONS		REMARKS
MM/DD/YY	Original	Alternate Design
1	11/03/2016	
2	11/29/2016	
3		
4		
5		

Felver Custom Cabinets

Hampton Inn & Suites - Oakwood, OH

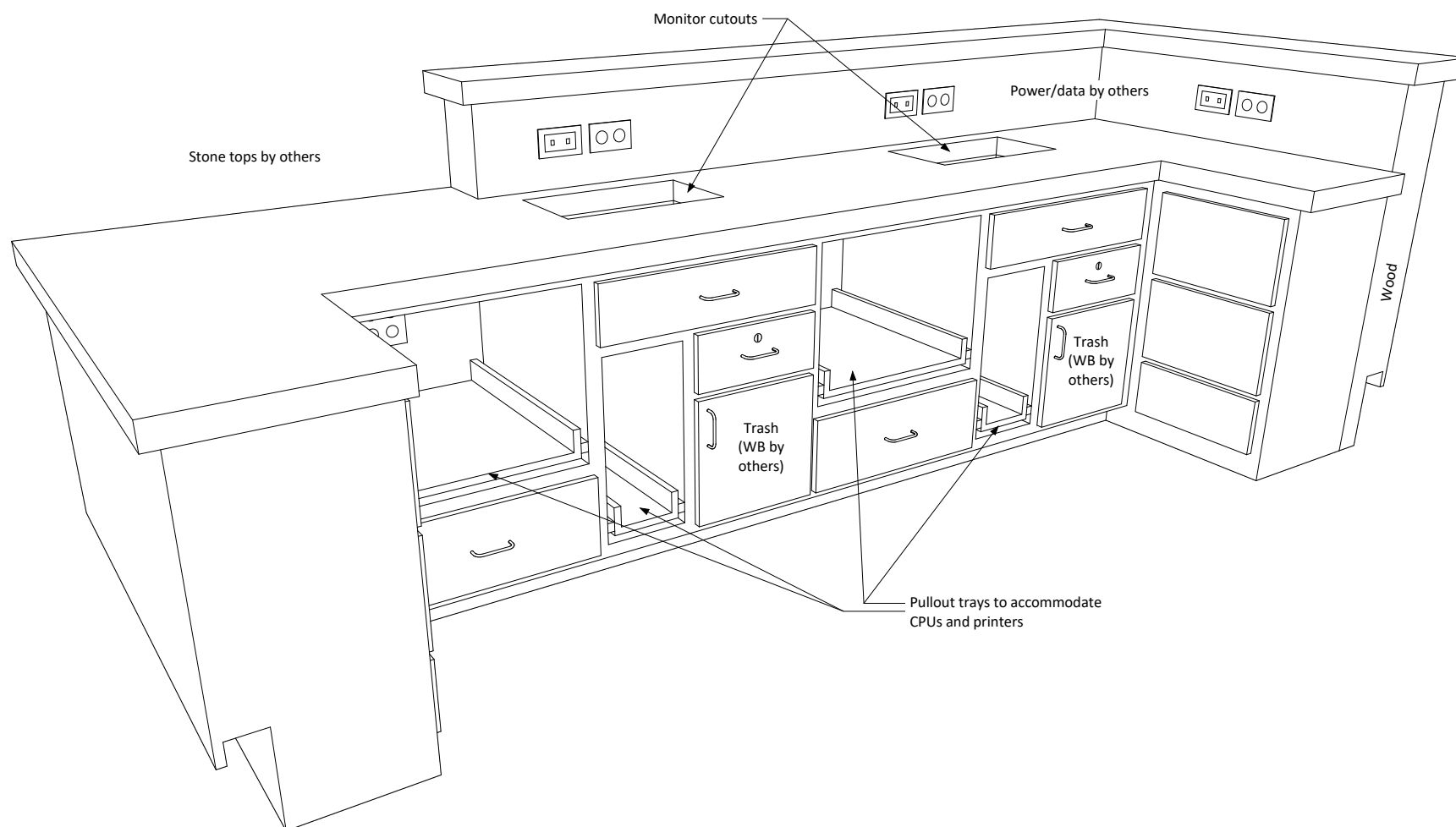
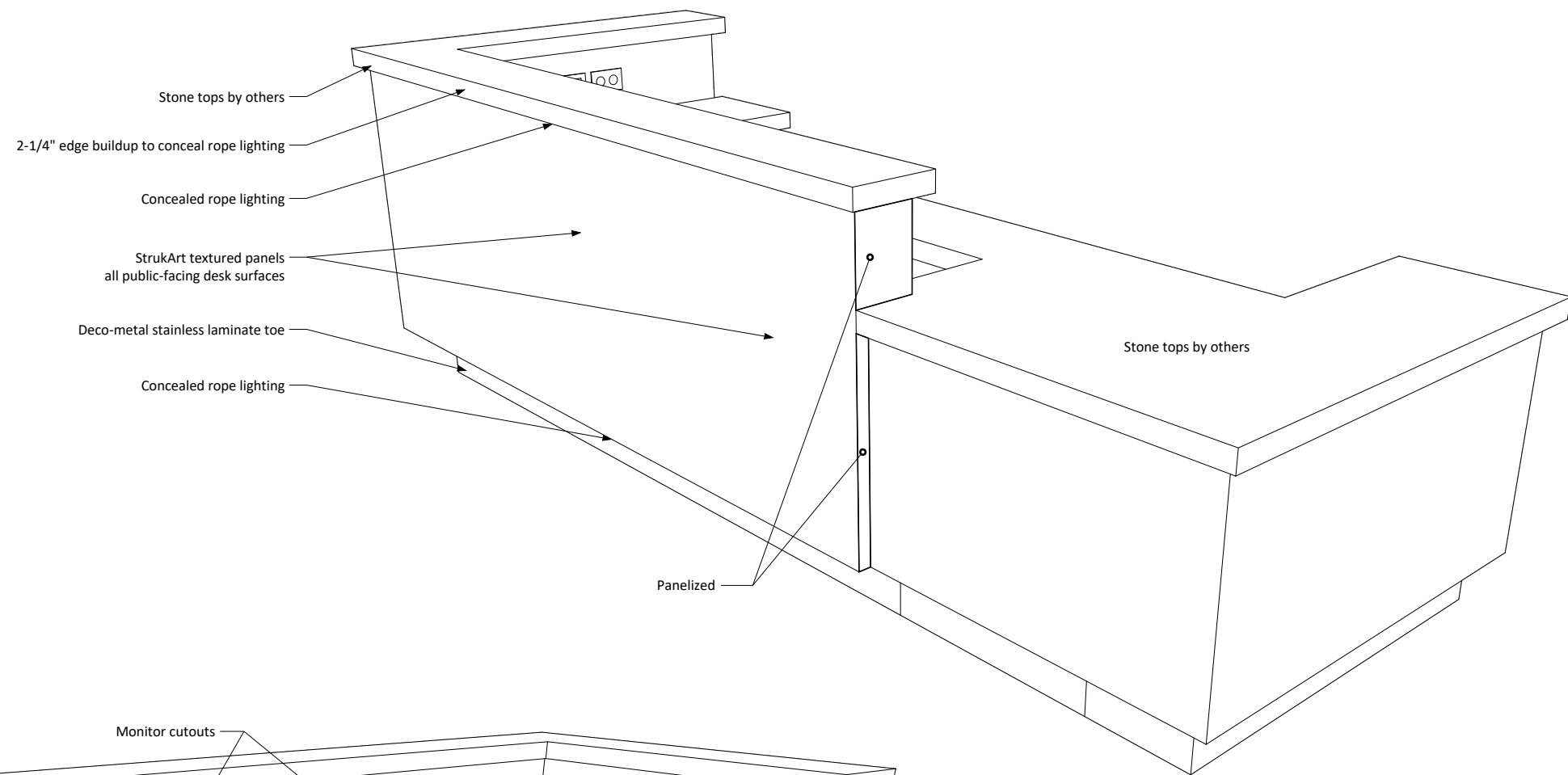
Registration Desk: Employee Work Desk Detail



ID-1 TOP EDGE BUILD-UP PROFILE



ID-2 TEXTURED PANEL: STRUKART #2390 "DELTA"



Wood: Maple
 Panels: StrukArt #2390 "Delta" (see A03:ID-2)
 Finish:
 stained plywood interiors
 Doors/drawers: Flush, square O.S. edges
 Standard hinges
 Heavy-duty full-extension guides on pullout trays
 All other drawers full-extension

REVISIONS

MM/DD/YY	REMARKS
11/03/2016	Original
11/29/2016	Alternate Design
	...
	...
	...

Felver Custom Cabinets

Hampton Inn & Suites - Oakwood, OH

Registration Desk