

Community Details and All Floor Plans Sorted by Name With Floor Plan Details



Citron at Esencia Highlights

CalAtlantic Homes

Actively Selling — Single Family Homes from \$649,900

Citron at Esencia offers beautiful, brand new homes in a premier Rancho Mission Viejo location, just steps from extensive amenities including the South Plunge community pool.

- Located across from the South Plunge community pool
- Spectacular amenities including pools, fire pits and miles of trails
- Stunning master-planned community

Set within the master-planned community of Rancho Mission Viejo, Citron at Esencia enjoys an exceptional location in walking distance of the South Plunge community swimming pool and the future K-8 school. Citron showcases brand new home designs, open floor plans and upscale interior touches. Esencia's incredible amenities including natural habitat, miles of trails, fitness clubs and gathering spaces enrich everyday life.

Esencia is Rancho Mission Viejo's second village situated in the heart of The Ranch offering scenic walkability and exceptional west-facing views. Expansive amenities include clubhouses, parks, trails and miles of scenic corridors for hiking, biking and leisurely walks. A cornerstone of the new community, The Canyon House is a social hub situated on the edge of Oak Canyon and connected to an Esencia farm. Facilities will encompass shopping centers, a clubhouse and pool, sports park, interpretive nature center and racquet club. Esencia is close to south Orange County's coastline, freeways, employment centers and John Wayne Airport.

Citron at Esencia is a limited collection of only 50 brand new, single-family homes. Four versatile floor plans feature 1,775 to 2,205 square feet, 3 to 4 bedrooms, 2.5 to 3 baths and 2-car garages. Elegant Great Rooms integrate easily with dining spaces and gourmet kitchens. A loft or optional fourth bedroom is available in select plans. Exterior architecture is evocative of Adobe Ranch, Ranch and California Bungalow styles.

COMMUNITY:

CalAtlantic Homes at Citron at Esencia

56 Lomada Street
Rancho Mission Viejo, CA 92694
Phone: (949) 218-6349

HOURS:

Monday: 1pm-5:30pm
Tuesday-Sunday: 10am-5:30pm

ONLINE COUNSELOR:

Deborah Muro
deborah.muro@calatl.com
(949) 560-6353

SALES COUNSELORS:

Cory Barker
cory.barker@calatl.com
Joyce Clarke
joyce.clarke@calatl.com

4 Floor Plans Available to Build

Citron Plan 1

Model Home

Starting from \$703,900



Citron Plan 1A Santa Barbara

MODEL

Sq Ft: 1,797 | Bed: 3 | Bath: 2.5 | Garage: 2 | Stories: 2

Citron Plan 2

Model Home

Starting from \$723,900



Citron Plan 2B California Bungalow

MODEL

Sq Ft: 1,936 - 1,957 | Bed: 3 | Bath: 2.5 | Garage: 2 | Stories: 2

Citron Plan 1X

Starting from \$649,900



Citron Plan 1XB California Bungalow

Sq Ft: 1,775 | Bed: 3 | Bath: 2.5 | Garage: 2 | Stories: 2

Citron Plan 3

Model Home

Starting from \$791,900



Citron Plan 3C Ranch

MODEL

Sq Ft: 2,205 | Bed: 3 - 4 | Bath: 3 | Garage: 2 | Stories: 2

Driving Directions



Citron at Esencia

56 Lomada Street
Rancho Mission Viejo, CA 92694
Phone: (949) 218-6349

From the 5 freeway

Exit Ortega Hwy 74. Head east on Ortega Highway 74 to Antonio Parkway. Turn Left on Antonio Parkway. Turn Right on Cow Camp Road. Turn left on Chiquita Canyon. Turn right on Fauna Dr. Turn right on Esencia Dr. Turn left on Andaza St. Turn Left onto Lomada St.

Area Amenities



School

Tesoro High School

3.1 miles North - High School
1 Tesoro Creek Road
Las Flores, CA 92688
(949) 234-5310

Las Flores Middle School

3.8 miles Northwest - Middle School
25862
Las Flores, CA 92688
(949) 589-6543

Las Flores Elementary

3.8 miles Northwest - Elementary
School
25862 Antonio Parkway
Rancho Santa Margarita, CA 92688
(949) 589-6935



Starting from \$703,900

Sq Ft: 1,797

Bed: 3

Bath: 2.5

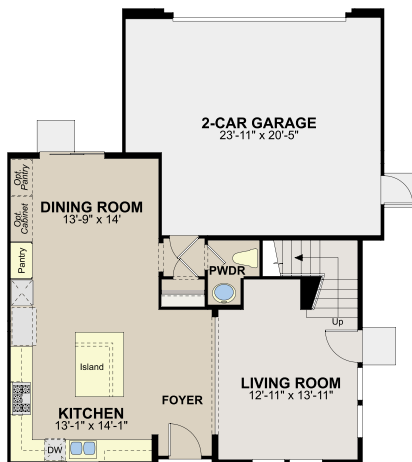
Garage: 2

Stories: 2

This inviting new home design includes a beautiful two-story entry foyer, which opens onto a gourmet kitchen and dining room. The impressive ceiling volume offers a grand sense of spaciousness. At the center of the home, the cook's kitchen showcases stainless steel appliances, elegant cabinetry and a large center island for food preparation and conversation. The dining space offers a dedicated pantry plus an optional second pantry and cabinets. Adjacent to the foyer, find a sizeable Great Room perfect for gatherings large and small. A powder bath and two-car garage complete the first level. Upstairs, enjoy a luxurious master bedroom with private bath enhanced by separate shower and soaking tub, dual vanities and spacious walk-in closet. Two secondary bedrooms, also located on the second story, share a Jack-and-Jill bath. An upstairs laundry room provides an optional sink and cabinet opportunities maximizing home organization.

Floor Plan

First Floor



Second Floor





Starting from \$649,900

Sq Ft: 1,775

Bed: 3

Bath: 2.5

Garage: 2

Stories: 2

This inviting new home design includes a beautiful two-story entry foyer, which opens onto a gourmet kitchen and dining room. The impressive ceiling volume offers a grand sense of spaciousness. At the center of the home, the cook's kitchen showcases stainless steel appliances, elegant cabinetry and a large center island for food preparation and conversation. The dining space offers a dedicated pantry plus an optional cabinet. Adjacent to the foyer, find a sizeable Great Room perfect for gatherings large and small. A powder bath and two-car garage complete the first level. Upstairs, enjoy a luxurious master bedroom with private bath enhanced by separate shower and soaking tub, dual vanities and spacious walk-in closet. Two secondary bedrooms, also located on the second story, share a Jack-and-Jill bath. An upstairs laundry room provides an optional sink and cabinet opportunities maximizing home organization.

Floor Plan

First Floor



Second Floor





Starting from \$723,900

Sq Ft: 1,936 - 1,957

Bed: 3

Bath: 2.5

Garage: 2

Stories: 2

A covered porch and dedicated foyer at the front of the home provide a visual point of entry. Adjacent to the foyer, a cook's kitchen leads easily to dining area and Great Room ideal for entertaining. The gourmet kitchen features stainless steel appliances, upscale cabinetry and large culinary preparation island facilitating family meals. A two-car garage provides out-of-sight storage possibilities. Near the staircase, find a powder bath building convenience into the home. A spacious second-story offers a versatile loft space perfect as an office, movie zone or tech center. Two secondary bedrooms plus a full bath accommodate children or guests. Tucked away in its own wing of the home, indulge in a private master suite with spa-like bath where a separate shower and soaking tub, dual vanities and oversized walk-in closet enhance daily rituals. An upstairs laundry room is positioned for optimal comfort.

Floor Plan

First Floor



Second Floor





Starting from \$791,900

Sq Ft: 2,205

Bed: 3-4

Bath: 3

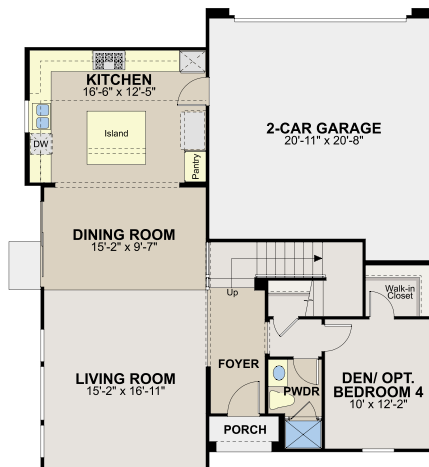
Garage: 2

Stories: 2

Our largest floor plan begins with an inviting entry foyer. From the foyer, an open and airy Great Room emerges and connects effortlessly with a dining room and kitchen. The cook's kitchen showcases elegant cabinetry, pantry, stainless steel appliances and large center island ideal for meal preparation. In its own wing of the home, find a den or optional fourth bedroom with full bath, which beautifully accommodates the student, hobbyist or overnight guest. A two-car garage houses cars and everyday items. Migrating upstairs, two secondary bedrooms, full bath and laundry room highlight functionality. A private master bedroom suite with spa-inspired bath offers a separate shower and soaking tub, dual vanities and an ample walk-in closet for storage and display.

Floor Plan

First Floor



Second Floor



Second Floor



Prices, plans, and terms are effective on the date of publication and subject to change without notice. Square footage/acreage shown is only an estimate and actual square footage/acreage will differ. Buyer should rely on his or her own evaluation of useable area. Depictions of homes or other features are artist conceptions. Hardscape, landscape, and other items shown may be decorator suggestions that are not included in the purchase price and availability may vary. No view is promised. Views may also be altered by subsequent development, construction, and landscaping growth. This website contains general information about a new home community(ies) in the states listed above and it is not an offer or the solicitation of an offer for the purchase of a new home. This information is not directed to residents of any other state that requires registration or permit issuance prior to the publication of such information. Plans to build out this neighborhood as proposed are subject to change without notice. CalAtlantic Homes does not represent and cannot guarantee to potential buyers that the project will be serviced by any particular public school/school district or, once serviced by a particular school/school district, that the same school/school district will service the project for any particular period of time. Schools that your children are eligible to attend may change over time. You should independently confirm which schools and districts serve the project and learn more information about the school district's boundary change process prior to executing a purchase contract. Persons in photos do not reflect racial preference and housing is open to all without regard to race, color, religion, sex, handicap, familial status or national origin. CalAtlantic Mortgage, Inc. SM and CalAtlantic Title Company are affiliates of seller. Please view the [Legal Disclaimer](#) for more information regarding licenses.