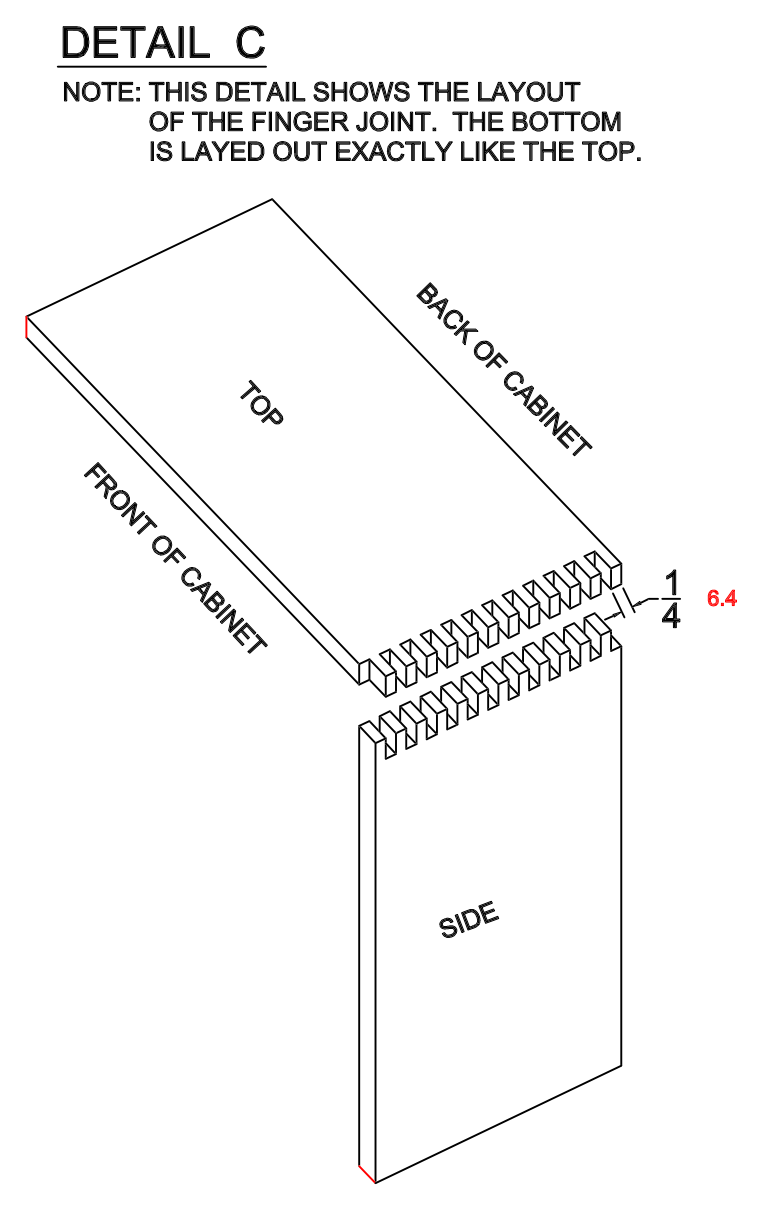
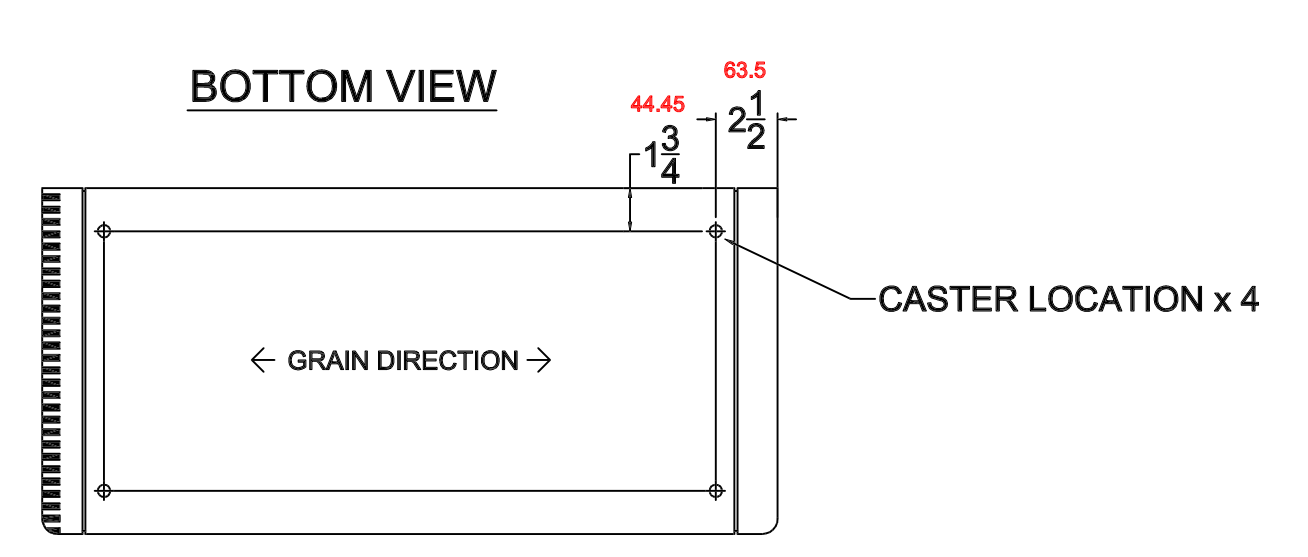
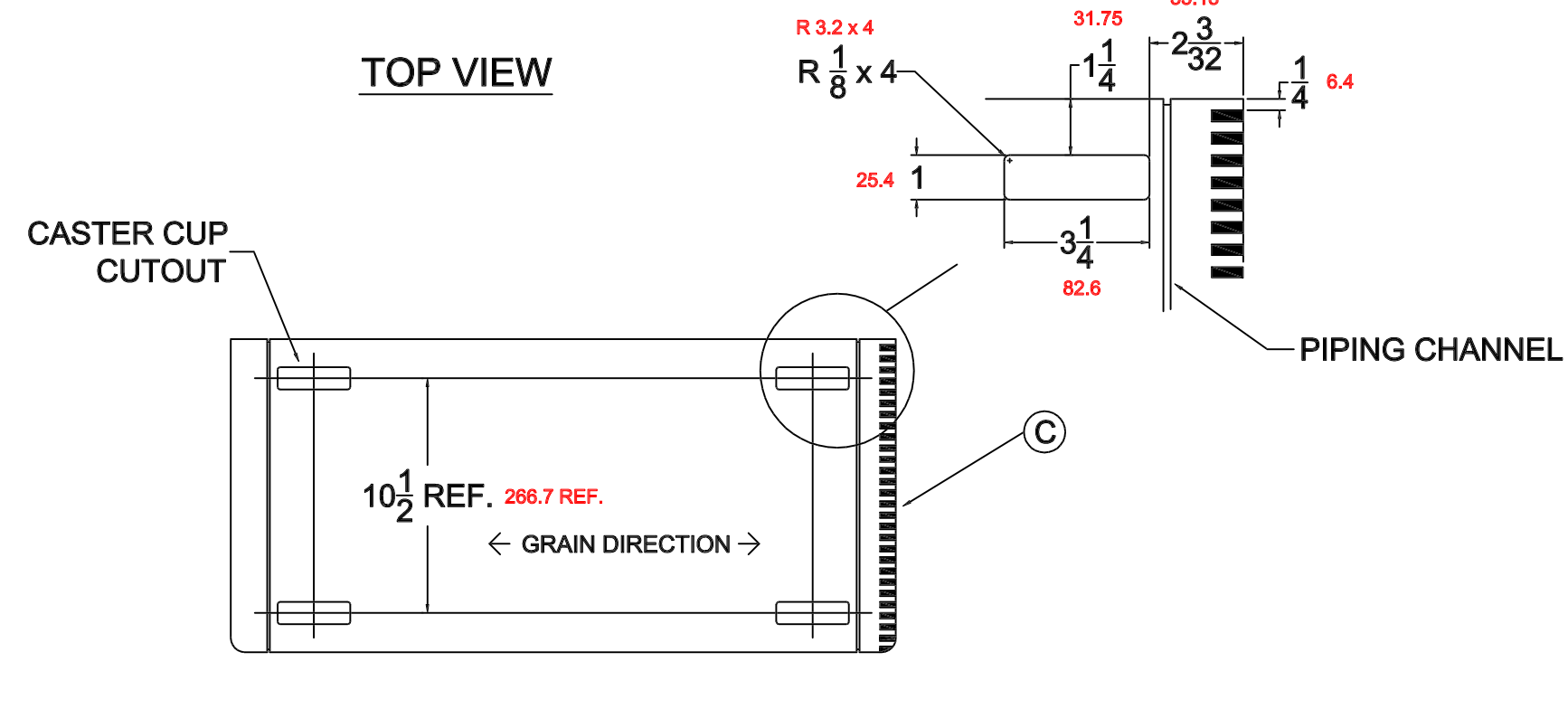
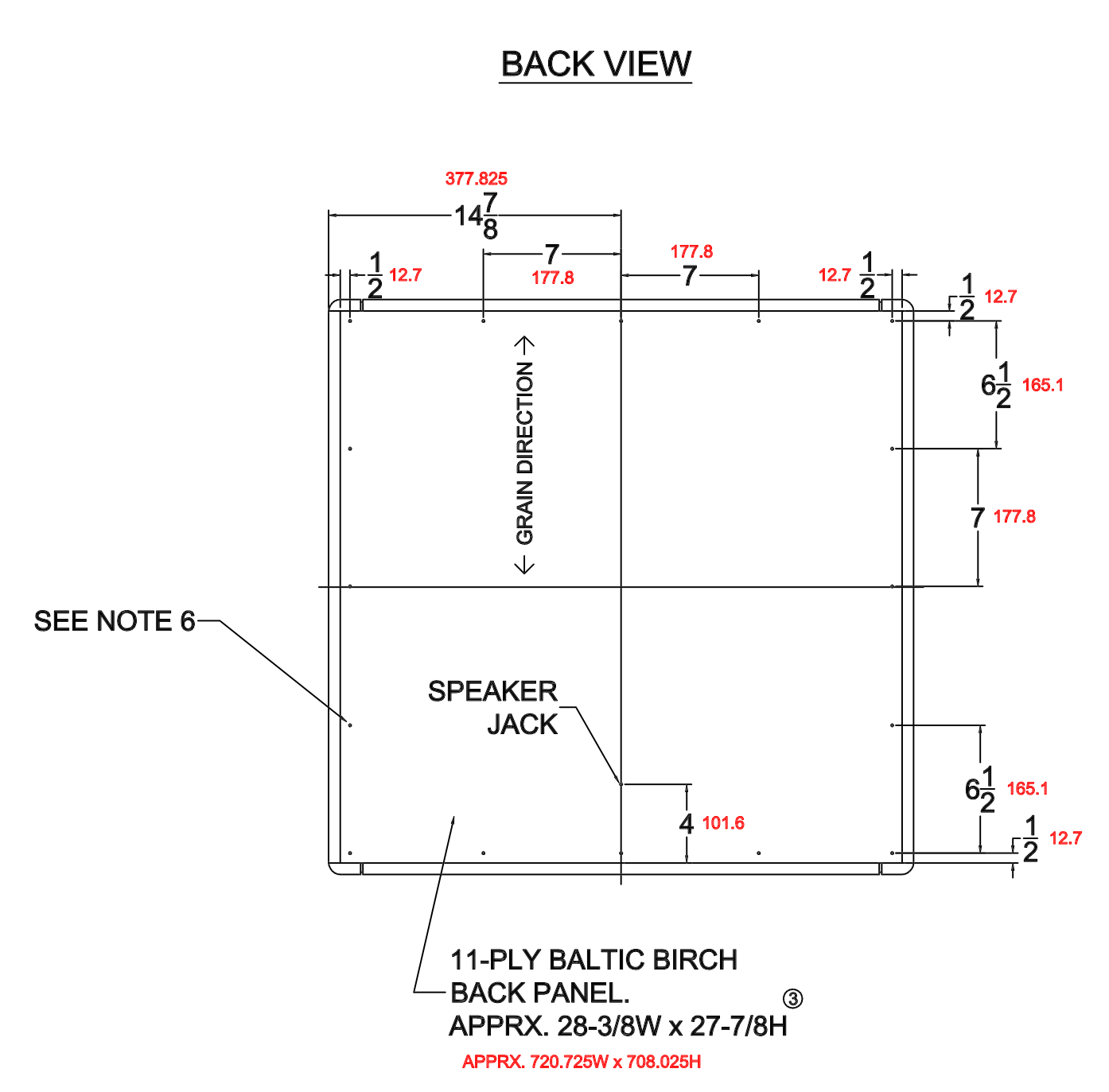
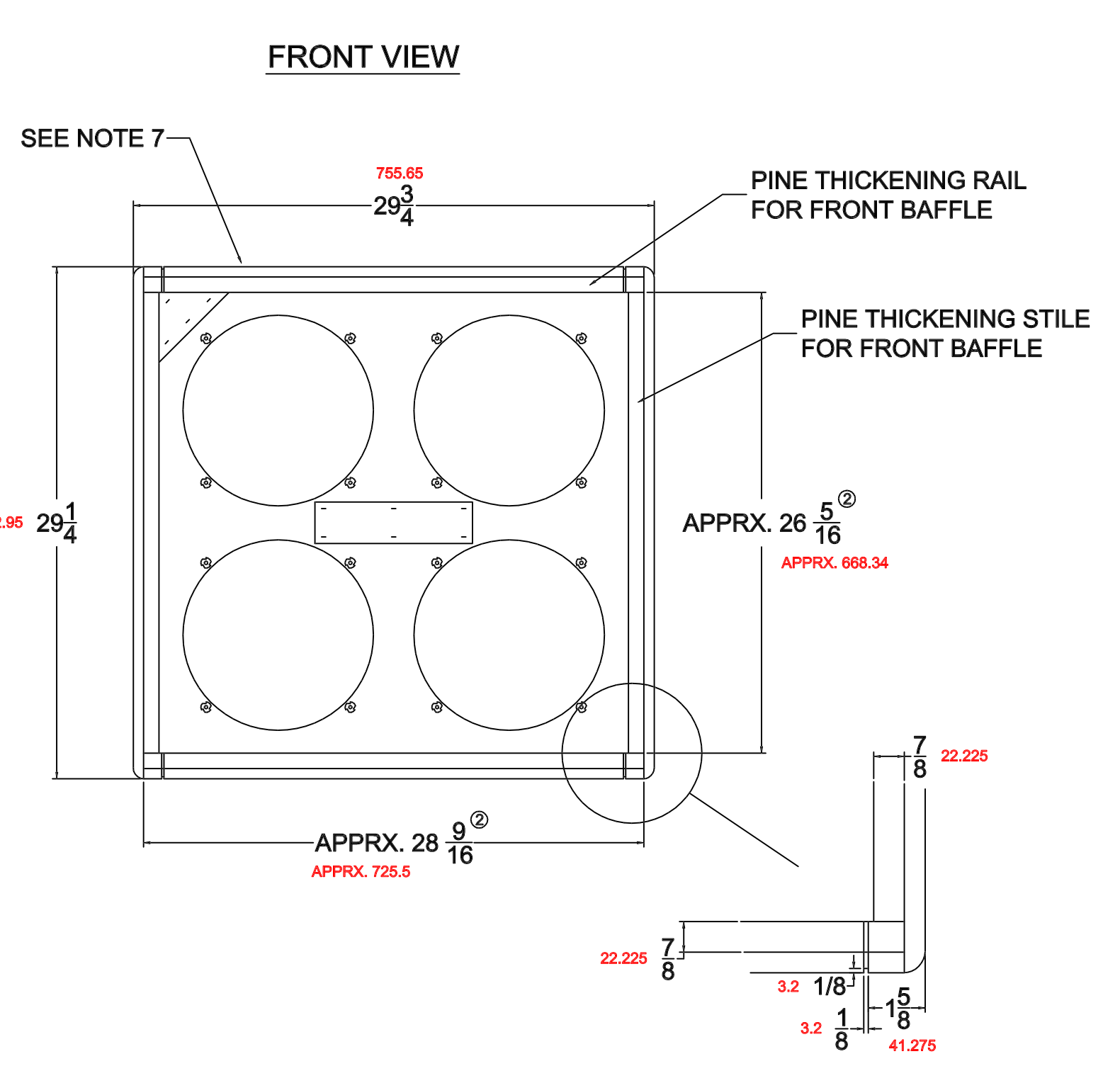
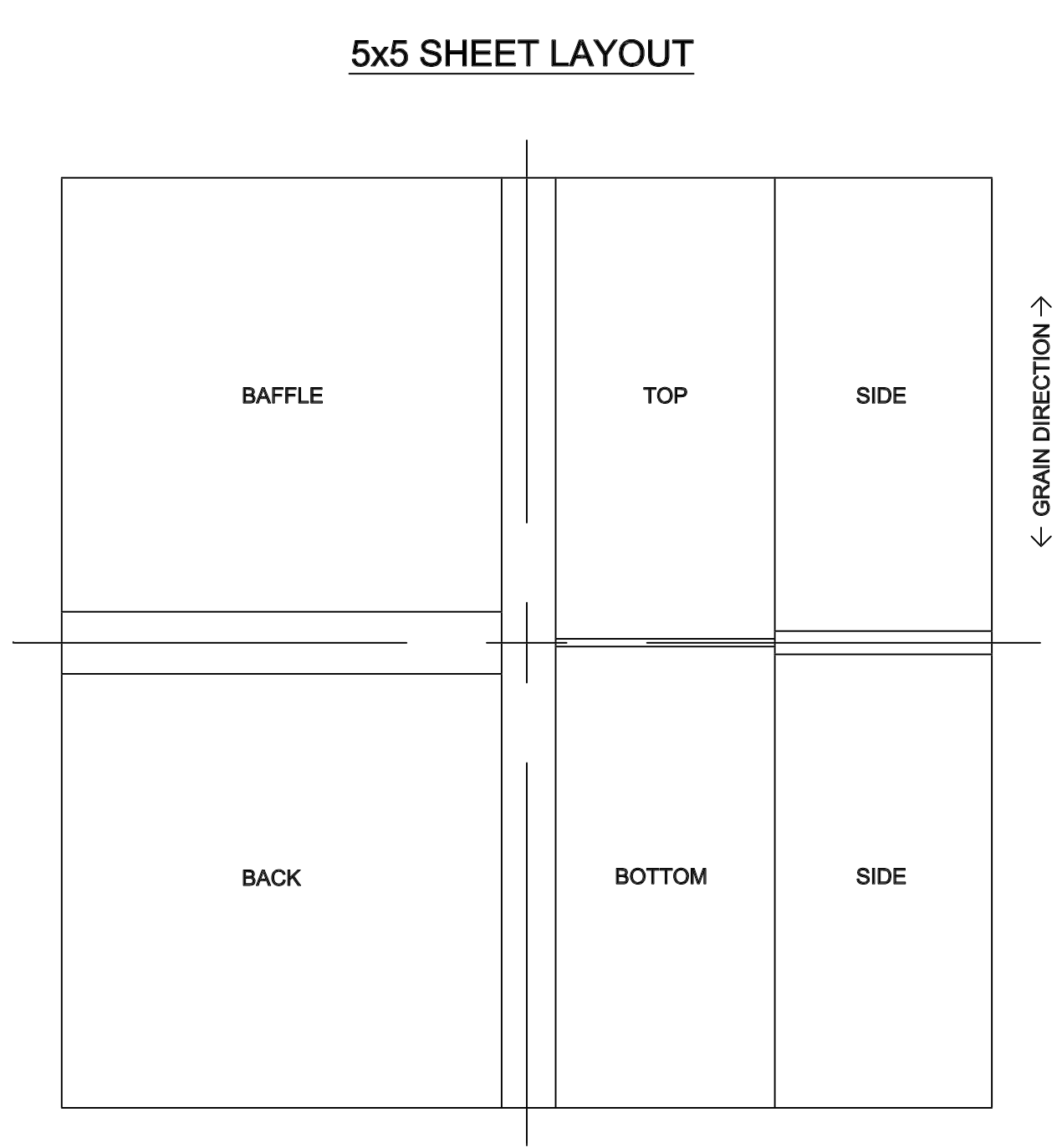
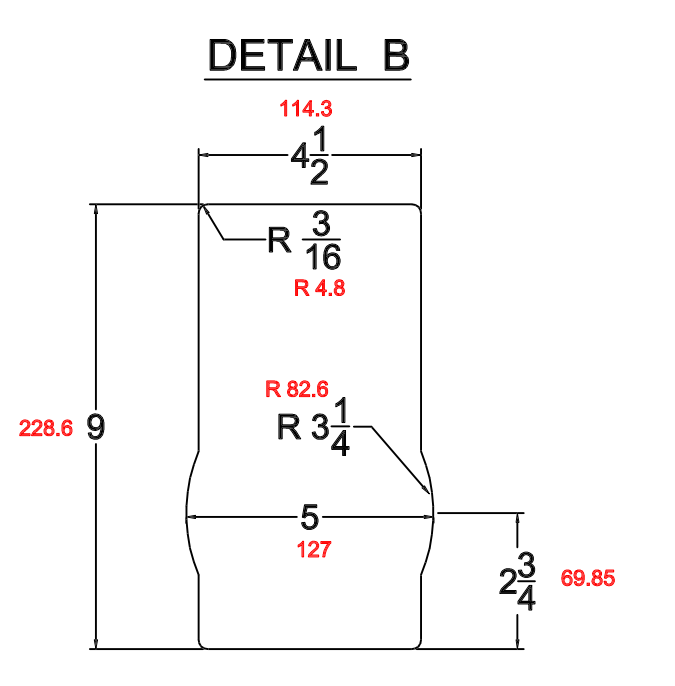
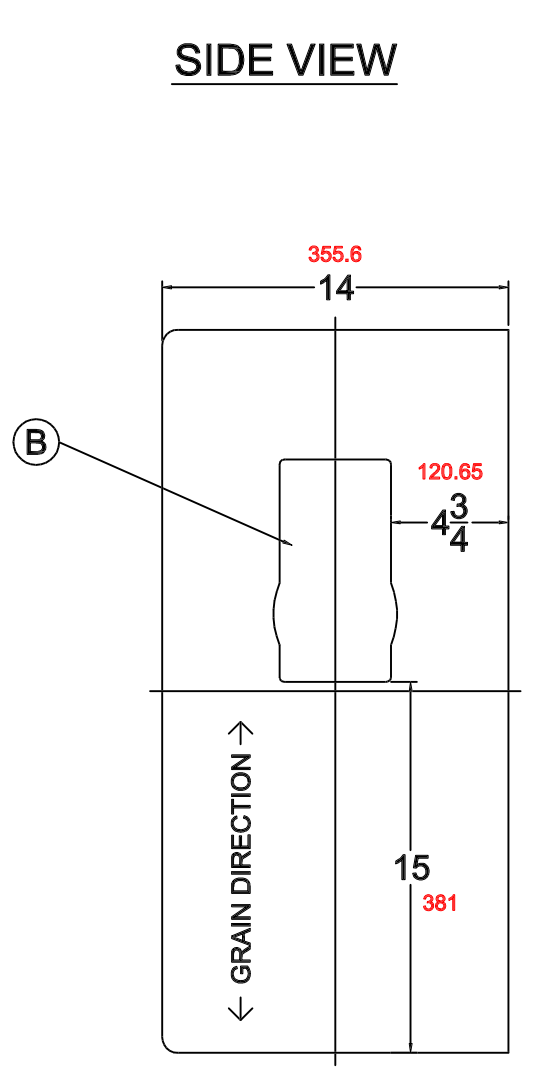
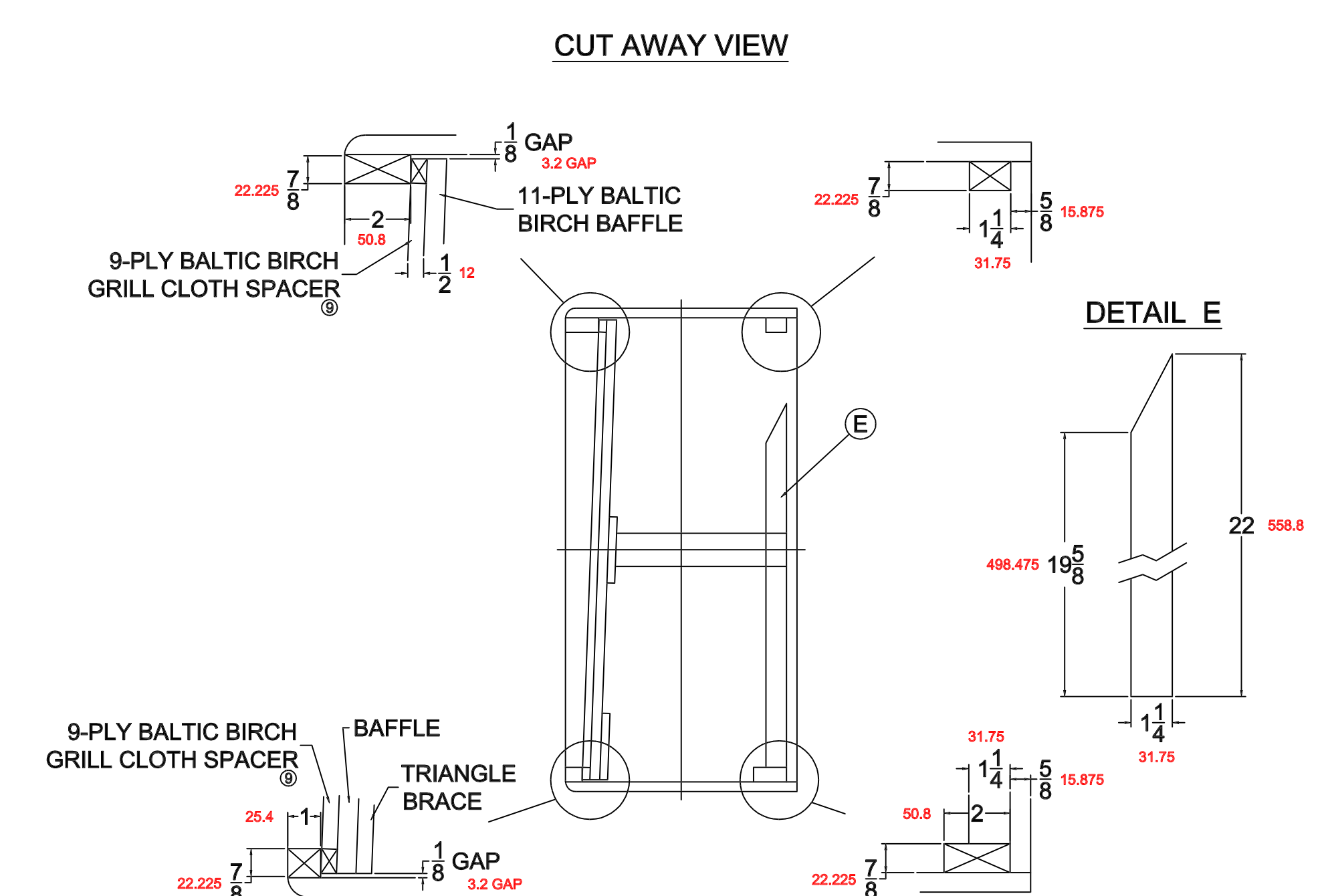
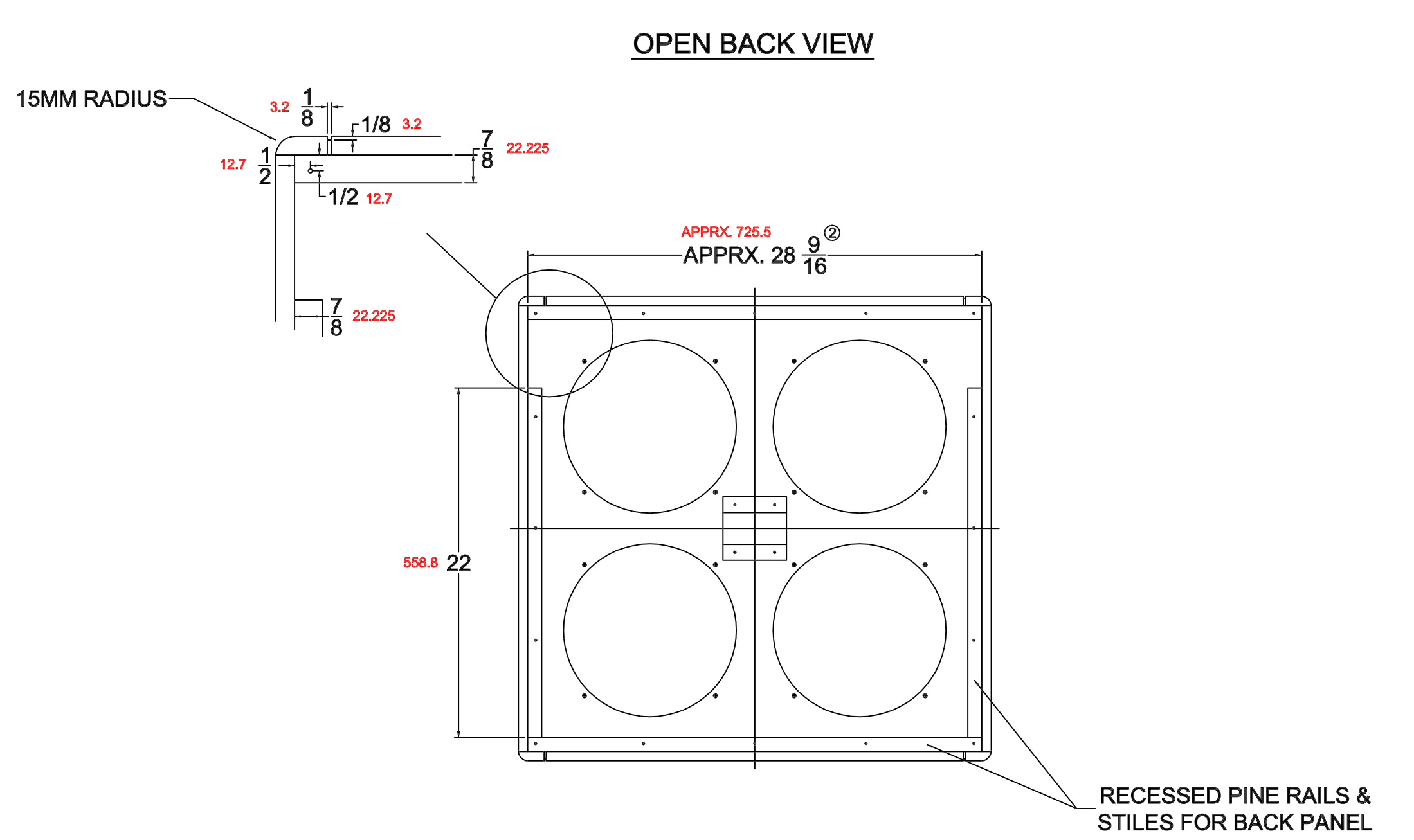
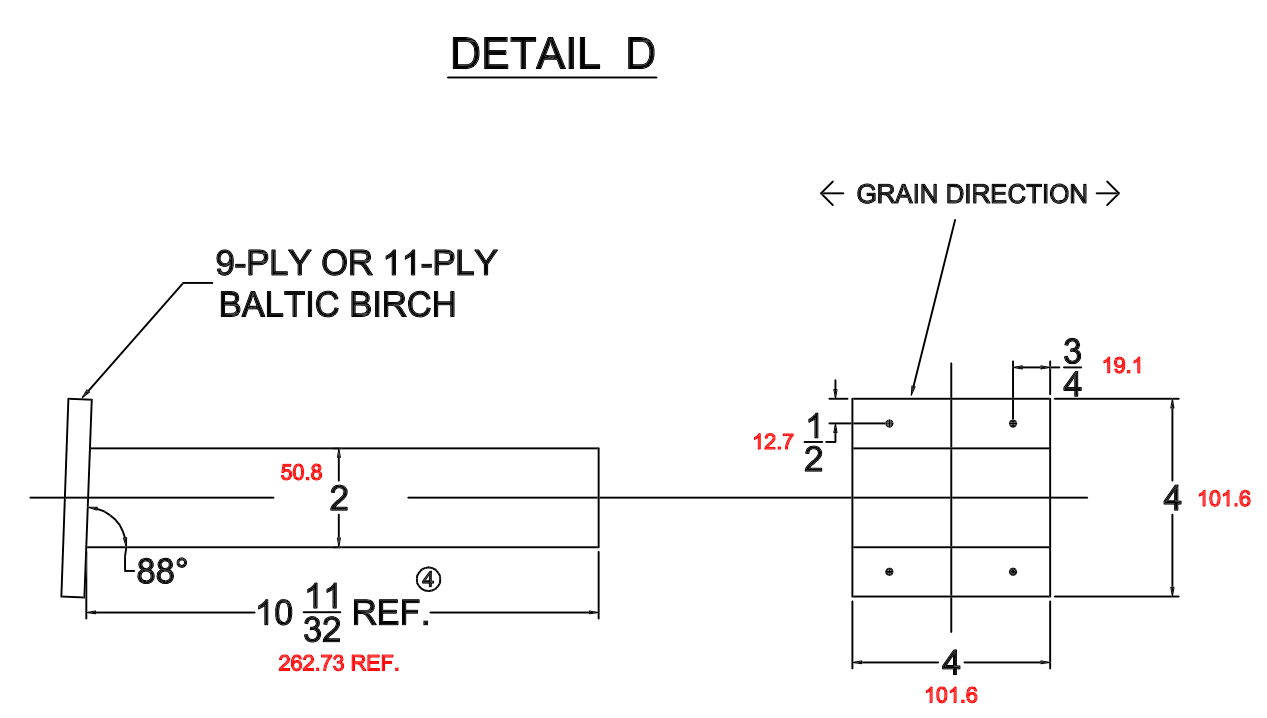
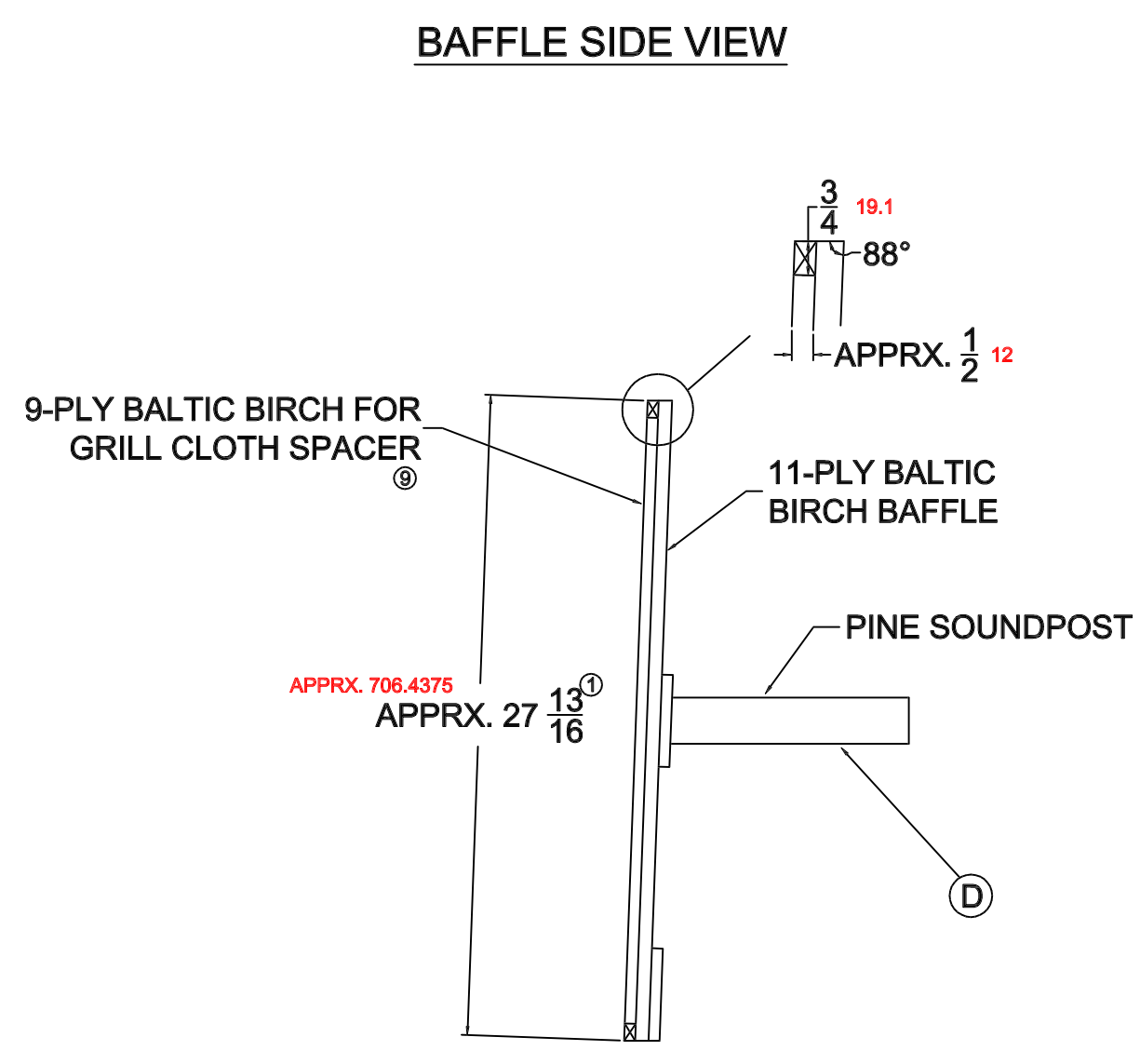
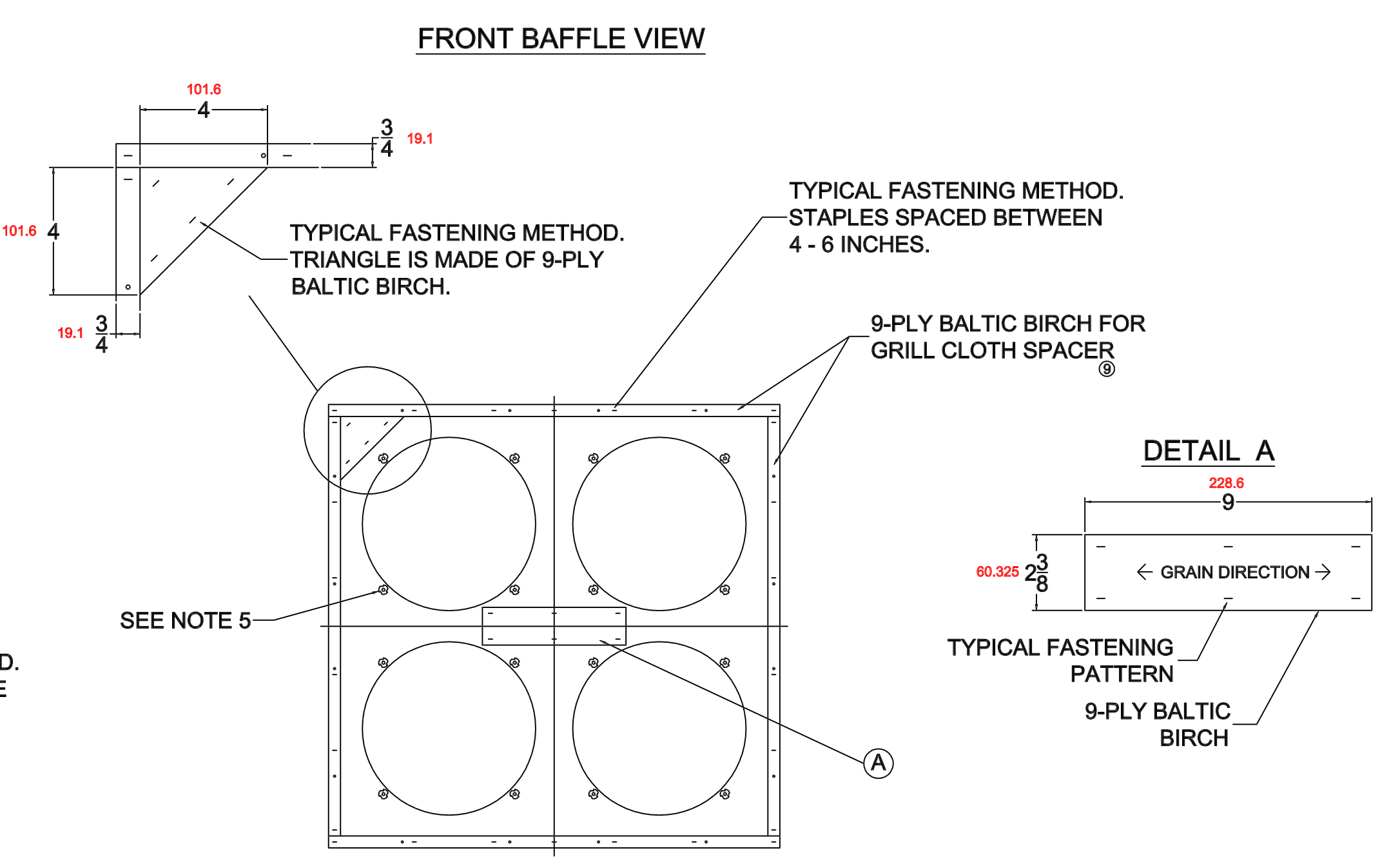
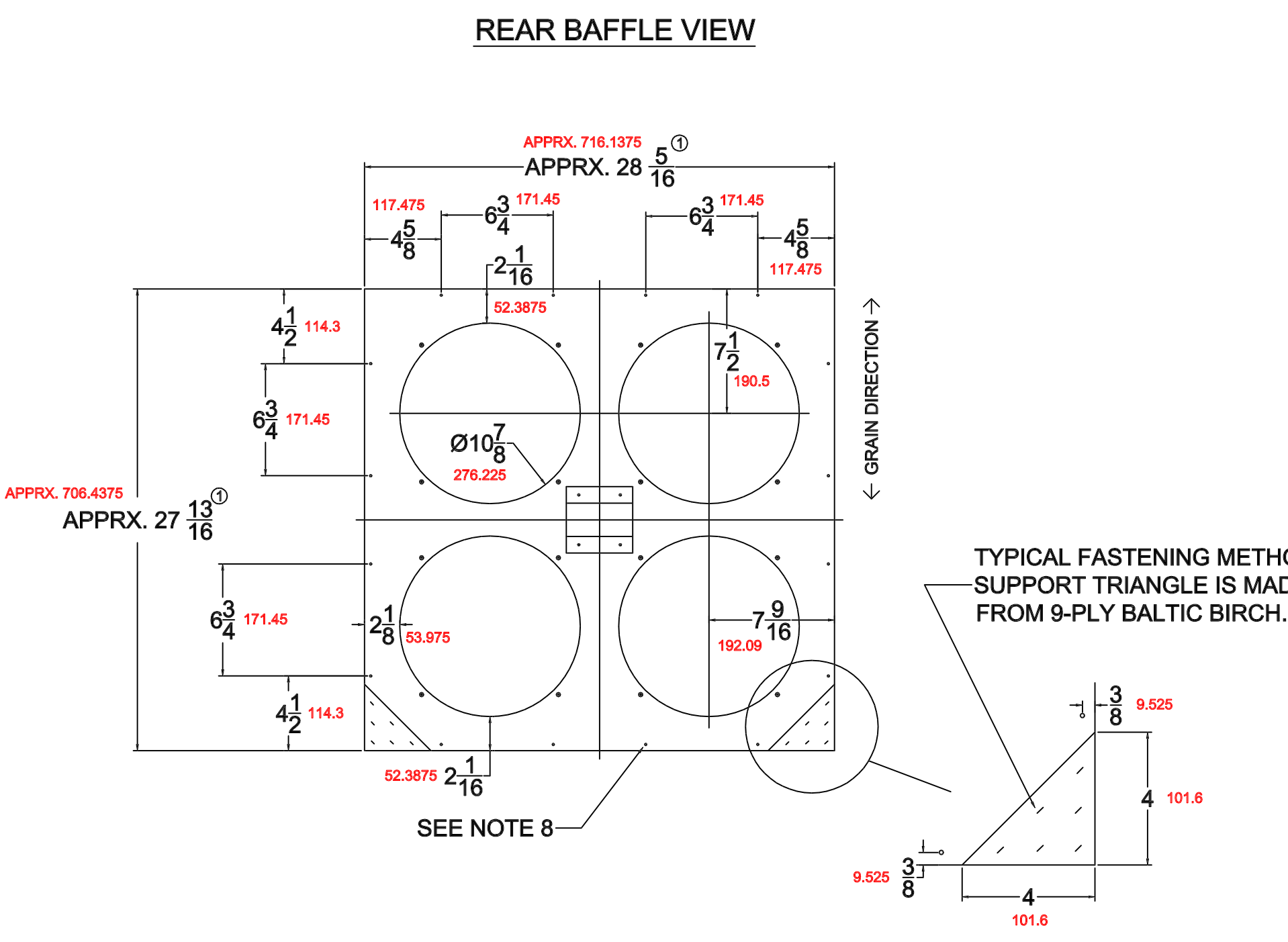


REVISIONS				
ZONE	REV	DESCRIPTION	DATE	APPROVED



- NOTES:**
- 1 BAFFLE SHOULD BE 1/4 INCH SMALLER IN BOTH DIRECTIONS COMPARED TO THE INSIDE DIMENSIONS OF THE CABINET SHELL.
 - 2 MEASUREMENT WILL VARY BASED ON CABINET SHELL DIMENSIONS, OR THE THICKNESS OF THE BALTIC BIRCH USED TO CONSTRUCT THE CABINET SHELL.
 - 3 ADJUST BACK PANEL DIMENSIONS BASED ON THE TOLEX USED.
 - 4 REFERENCE DIMENSION SHOWN USING AN 9-PLY MOUNTING BLOCK. ADJUST ACCORDINGLY FOR A 11-PLY BLOCK.
 - 5 ORIGINAL CABINETS USED T-NUTS WITH 2BA THREADS WITH MATCHING SLOTTED FILLISTER HEAD SCREWS AT 1 INCH IN LENGTH. THE 10-52 COMBO IS USED AS A REPLACEMENT TODAY.
 - 6 BACK PANEL IS ATTACHED WITH #8 x 1-3/4 INCH WOOD SCREWS COUPLED WITH FINISHING WASHERS.
 - 7 TOP, BOTTOM, AND SIDES OF CABINET SHELL ARE MADE OF 11-PLY VOID FREE BALTIC BIRCH.
 - 8 BAFFLE PANEL IS ATTACHED WITH #8 x 1-3/4 INCH WOOD SCREWS.
 - 9 SOME CABINETS USED 1/2 INCH THICK PINE INSTEAD.
- A SPECIAL THANKS GOES TO JIM SEVALL OVER AT SCUMBACK BREAKERS FOR ALL HIS HELP ON THIS PROJECT.

DRAWN BY: MSD		DATE: 3/09/11	SCALE: 1:1	SHEET 1 OF 1		
TITLE: LATE '60'S MARSHALL 1960B CABINET						
SIZE	FROM NO.	DWG NO.	REV			