



HOCKEY **Teamwear** **Bags, Balls and** **Equipment**

Available in club colours
for your team

"Made to Order" for
Schools and Clubs

Core colours immediately
from stock



Introduction

Our stylish range of functional garments is designed and manufactured to the highest quality standards, to withstand the rigours and demands of International Hockey, as well as now being available for grass roots level in junior's sizes. These stock colours are highlighted in the following pages, which are immediately available with the benefit of no minimum quantities involved.

Grays have an exclusive agreement with the International Hockey Federation (FIH) as their official equipment and clothing supplier and are proud to have secured this contract with the FIH as the world governing body. In addition to this, many club teams like Leicester Hockey club and Sevenoaks Hockey club are already choosing to use Grays.

This fast service option can be personalized to suit the needs of your team, club, university or school, by adding Team logos, embroidery or print including numbering and sponsor's logos.



160th Anniversary

Grays since 1855 – 160 years in sport



GraysHockey



grayshockey



graysofficial



Contents

SUBLIMATION

Styles and examples	2
---------------------------	---

ON FIELD HOCKEY/TEAMWEAR - STOCK - Shirts, shorts and skorts

G750 Men's Shirt	4
G650 Men's Shirt	5
G500 Shorts	7
G550 Shorts	7
Men's and Women's Socks	8
G750 Women's Shirt	9
G650 Women's Shirt	9
G600 Skort	11
G550 Skort	11
G500 Hockey Skort	11

ON FIELD HOCKEY/TEAMWEAR - MADE TO ORDER - Shirts, shorts and skorts

G750 Men's Shirt	4
G650 Men's Shirt	5
G550 Men's Shirt	6
G450 Men's Shirt	5
G500 Shorts	7
Men's and Women's Socks	8
G750 Women's Shirt	9
G650 Women's Shirt	9
G550 Women's Shirt	10
G450 Women's Shirt	10
G600 Skort	11
G500 Hockey Skort	10

HOCKEY MATCHWEAR - Family Ranges

Pro Team Range	12
Revolution Range	13
Storm Range	14

HOCKEY TRAINING WEAR - STOCK - Jackets, Fleece and Hoodies

Padded Gilet	15
G650 Training Jacket	15
G650 Training Trouser	15
G750 Training Jacket	16
G550 Hooded Fleece	19
G650 Thermo Fleece	19

HOCKEY TRAINING WEAR - MADE TO ORDER - Jackets, Fleece and Hoodies

G800 Jacket	15
Vapour XP 1/2 Zip Jacket	16
Vapour Trouser	16
Revolution Jacket	16
Revolution 1/2 Zip Jacket	17
Revolution Trouser	17
Storm Shower Jacket	17
Pro Team Shower Jacket	17
Pro Team Hoodie	18
Vapour Hoodie	18
Storm Hoodie	18

Revolution Hoodie	18
Revolution Track Top	20
Revolution Track Trouser	20
Pro Team Track Top	20
Pro Team Track Trouser	20
Storm Track Top	21
Storm Track Trouser	21

HOCKEY LEISURE WEAR - MADE TO ORDER - Jackets, Fleece and Hoodies

Matrix Polo Shirt	22
Matrix Tee Shirt	22
Pro Team Shirt	22
Pro Team Shirt	22
Vapour Polo Shirt	23
Vapour Tee Shirt	23
Performance Polo Shirt	23
Performance Tee Shirt	23

HOCKEY LUGGAGE - STOCK

Compact Holdall	24
Transit Holdall	24
Rucksack	25
GX7000	25
REVO Stick Bag	26

HOCKEY LUGGAGE - MADE TO ORDER

Traveller Holdall	24
Rucksack	25
GX7000	25
REVO Stick Bag	26

HOCKEY BALLS - STOCK

Astrotec Ball	27
Match Ball	27
Matchplay Ball	27

HOCKEY BALLS - MADE TO ORDER

Custom Ball	27
-------------------	----

HOCKEY TRAINING EQUIPMENT

Water Bottle	27
Water Bottle Carrier	27

HOCKEY COACHING ACCESSORIES

Coaching Clip Board	29
Coaching Folder	29
Safety Markers	29
Speed Ladder	29

OTHER INFORMATION

Your own Kit Website	28
Information and Ordering	30
Embellishment Services	32
Embellishment Positions	33
Glossary	34
Size Chart	35
Colour Chart	36

Sublimated Style

Our performance sublimated shirts are made of the highest quality fabrics, with moisture management and breathability functions to keep the body cool and dry, balancing eye-catching style with high performance benefits. Now available in a range of collar options to suit. Made to order only.

Fit Styles

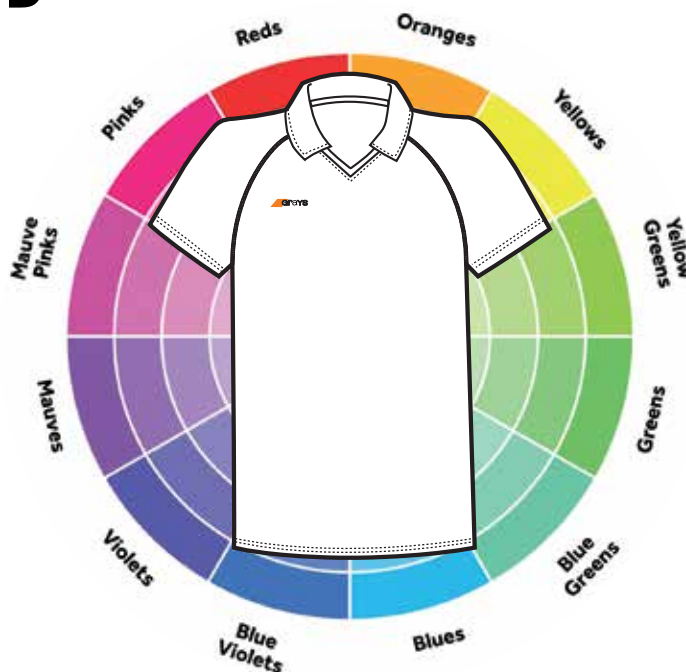
CLUB CUT

Traditional fit, comfortable for all shapes and sizes of player. Ideal for matchwear or training.

Minimum Order Quantity: 12

Lead Time: 8 weeks from order acceptance.

(See order information on page 30)



Sleeves

Available in short sleeves only

Any design is possible on these Shirts.
Please see the examples on Page 3.



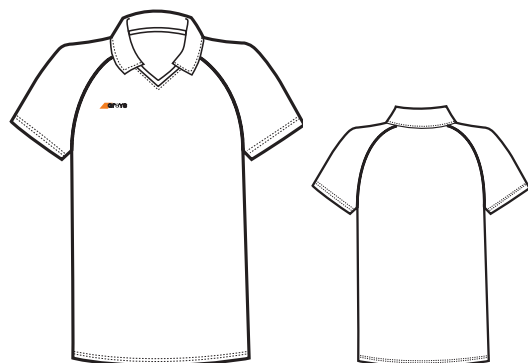
Men's Shirt - Sublimated

Sublimated shirts can be made to order in your chosen colours.

Player Level: All levels of hockey

Sizes: Men's 2XS - 3XL

Fabrics: : G-Lite 500



Men's code: 27017s

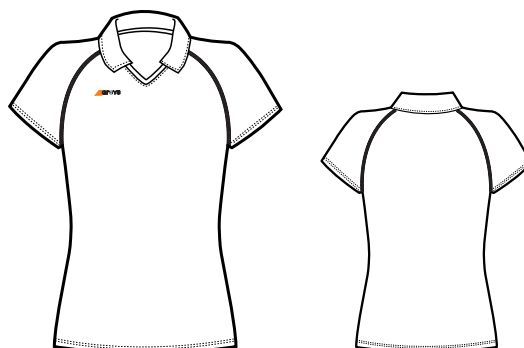
Women's Shirt - Sublimated

Sublimated shirts can be made to order in your chosen colours.

Player Level: All levels of hockey

Sizes: Women's 6 - 20

Fabrics: : G-Lite 500



Women's code: 27018s

Examples (Men's) - Sublimated



Design Code : 001

Examples (Women's) - Sublimated



Design Code : 004



Design Code : 002



Design Code : 005



Design Code : 003



Design Code : 006

For more information, to place an order, or to discuss your requirements
call: 01580 883120



G 750 Men's Shirt - Stocked Item

Our stylish range of functional garments is designed and manufactured to the highest quality standards, to withstand the rigours and demands of International Hockey, as well as now being available at grass roots level in Junior's sizes.

Player Level: All levels of hockey

Sizes: Men's XS-2XL Junior's 5/6 - 11/12 yrs.

Fabrics: G-Pro Stretch 705, G-Lite 555 & G-Lite 705

Available from stock as shown. Your logo, sponsor's logo and number can be added.



Code: 60001+

Black/White



Code: 60002+

Navy / White



Code: 60003+

Red / White



Code: 60004+

Green / White



Code: 60005+

White / Navy

G 755 Men's Shirt - Made to Order

G 755 Men's shirts can be made to order in your chosen colours.

Player Level: All levels of hockey

Sizes: Men's 2XS - 3XL Junior's 5/6 - 11/12 yrs.

Fabrics: G-Pro Stretch 700, G-Lite 500 & G-Lite 700

Minimum Order: 12

Lead Time: 8 weeks from order acceptance (See order information on page 30)



Men's Code: 27238s
Junior's Code: 27242s

Please use the colour palette below to choose fabric colours for the panels on this garment.
Piping is available in Black and White only

G 755 MEN'S SHIRT MAIN BODY COLOUR OPTIONS (Front)



Mars Red Purple Indigo Ink Navy Black New Royal

G 755 MEN'S SHIRT MAIN BODY COLOUR OPTIONS (Back)



White Cream Gold Mars Red Fuchsia Maroon Purple Ink Navy Malibu Sky Indigo Royal Powder Blue Navy Emerald Forest Red Bottle Green Jade Green Black Silver Sand Lime

G 755 MEN'S SHIRT CONTRAST PANEL COLOUR OPTIONS (Side)



White Gold Maroon Purple Malibu Indigo Ink Navy Curry Emerald Black Forest Mars Red

G 650 Men's Shirt - Stocked Item

Moisture management fabric to move moisture away from the body, keeping you cool, dry & comfortable.

Player Level: All levels of hockey

Sizes: Men's XS-2XL

Fabrics: G-Pro Stretch 705, G-Lite 555 & G-Lite 705

Available from stock as shown. Your logo, sponsor's logo and number can be added.



G 655 Men's Shirt - Made to Order

G 655 Men's shirts can be made to order in your chosen colours.

Player Level: All levels of hockey

Sizes: Men's 2XS - 3XL Junior's 5/6 - 11/12 yrs.

Fabrics: : G-Pro Stretch 700, G-Lite 500 & G-Lite 700

Minimum Order: 12

Lead Time: 8 weeks from order acceptance (See order information on page 30)



Men's code: 27237s
Junior's code: 27241s

Please use the colour palette below to choose fabric colours for the panels on this garment.

Piping is available in Black and White only

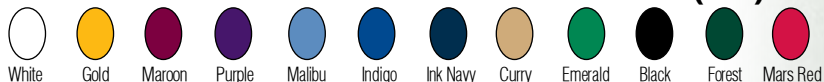
G 655 MEN'S SHIRT MAIN BODY COLOUR OPTIONS (Front)



G 655 MEN'S SHIRT MAIN BODY COLOUR OPTIONS (Back)



G 655 MEN'S SHIRT CONTRAST PANEL COLOUR OPTIONS (Side)





G 550 Men's Shirt - Made to Order

G 550 Shirts can be made to order in your chosen colours.

Player Level: All levels of hockey

Sizes: Men's 2XS - 3XL

Fabrics: : G-Lite 300

Minimum Order: 12

Lead Time: 8 weeks from order acceptance (See order information on page 30)



Men's Code: 27013s

Please use the colour palette below to choose fabric colours for the panels on this garment.

G 550 SHIRTS COLOUR OPTIONS



G 450 Men's Shirt - Made to Order

G 450 Shirts can be made to order in your chosen colours.

Player Level: All levels of hockey

Sizes: Men's 2XS - 3XL

Fabrics: :G-Lite 300

Minimum Order: 12

Lead Time: 8 weeks from order acceptance (See order information on page 30)



Men's Code: 27014s

Please use the colour palette below to choose fabric colours for the panels on this garment.

G 450 SHIRTS COLOUR OPTIONS



G 500 Shorts - Stocked Item

Lightweight microfibre shorts and an elasticated waist and draw cord.

Player Level: All levels of hockey

Sizes: Men's 2XS - 2XL Junior's 5/6 - 11/12 yrs

Fabrics: G-Com 505

Available from stock as shown. Your logo, sponsor's logo and number can be added.



Code: 60083+

Black



Code: 60082+

Navy



Code: 60084+

White



Code: 60086+

Dark Navy

G 550 Shorts - Stocked Item

Lightweight peached microfibre shorts with longer knee length style.

Player Level: All levels of hockey

Sizes: Men's 2XS - 2XL Junior's 5/6 - 11/12 yrs

Fabrics: G-Com 505

Available from stock as shown. Your logo, sponsor's logo and number can be added.



Code: 60081+

Black



Code: 60080+

Navy



Code: 60085+

Dark Navy

G 500 Men's Shorts - Made to Order

G 500 Men's Shorts can be made to order in your chosen colours.

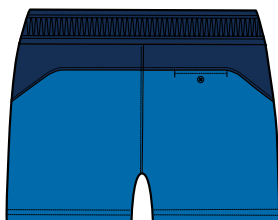
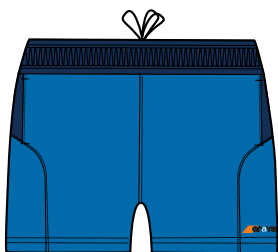
Player Level: All levels of hockey

Sizes: Men's 2XS - 3XL Junior's 5/6 - 11/12 yrs.

Fabrics: : G-Com 500

Minimum Order: 15

Lead Time: 8 weeks from order acceptance (See order information on page 30)



Men's code: 28903s
Junior's code: 27235s

Please use the colour palette below to choose fabric colours for the panels on this garment.

G 500 MEN'S SHORTS COLOUR OPTIONS



White



Ink Navy



Yellow



Forest



Black



Ocean Blue



Socks

Grays Hockey socks are ergonomically designed to fit snugly around the shape of the foot, High density padding in the heel, toe & underfoot gives support with comfort in mind, whilst the integrated mesh features allow enhanced ventilation.

G 650 Hockey Sock - Stocked Item

Sock with wider fit leg and a mesh ventilation section in the back of the leg to allow air to circulate.

Player Level: All levels of hockey

Sizes: Small (12-2) Medium (3-6.5) Large (7-11)

Fibre: 95% Polyamide 5% Elastane

Available from stock as shown.



G 550 Hockey Sock - Stocked Item

Ventilation section on top of foot for improved breathability and an elasticated ankle and arch support.

Player Level: All levels of hockey

Sizes: Small (12-2) Medium (3-6.5) Large (7-11)

Fibre: 95% Polyamide 5% Elastane

Available from stock as shown.



G 650 Sock - Made to Order

A range of designs are possible in your team colours - and incorporating your logo (subject to logo design).

Level: All

Sizes: Small (12-2) Medium (3-6.5) Large (7-11) Extra Large (12-14)

Fibre: 95% Polyamide, 5% Elastane

Minimum Order: 25

Lead Time Guide: 8 weeks from order acceptance. (See order information on page 30)



G 550 Sock - Made to Order

A range of designs are possible in your team colours - and incorporating your logo (subject to logo design).

Level: All

Sizes: Small (12-2) Medium (3-6.5) Large (7-11) Extra Large (12-14)

Fibre: 95% Polyamide, 5% Elastane

Minimum Order: 50

Lead Time Guide: 8 weeks from order acceptance. (See order information on page 30)



Powder Blue	Sky	B Sky	Grey	Silver	DK Grey	Ink Navy	Navy	Royal	Flo Tang	Flo Pink	Cyan	Flo Lime	Flo Yellow	P Pink	Sugar Pink	Neon Pink	Ev Pink	Magenta
Purple	Mars Red	Maroon	DK Maroon	White	Black	Brown	Wine	Scarlet	P Purple	N Yellow	Gold	Tang	Bottle	Dk Bottle	Teal	Emerald	Amber	Yellow

G 750 Women's Shirt - Stocked Item

Feminine V neck design with collar, Moisture management fabric to move moisture away from the body, keeping you cool, dry & comfortable.

Player Level: All levels of hockey

Sizes: Women's 6 - 16

Fabrics: G-Pro Stretch 705, G-Lite 555 & G-Lite 705

Available from stock as shown. Your logo, sponsor's logo and number can be added.



Black/White

Navy / White

Red / White



Green / White

White / Navy

G 650 Women's Shirt - Stocked Item

Women's feminine fit Classic V-neck design including lightweight, quick drying fabric.

Player Level: All levels of hockey

Sizes: Women's 6 - 16

Fabrics: G-Pro Stretch 705, G-Lite 555 & G-Lite 705

Available from stock as shown. Your logo, sponsor's logo and number can be added.



Black/White

Navy / White

Red / White



Green / White

White / Navy

G 755 Women's Shirt - Made to Order

G 755 Women's Shirts can be made to order in your chosen colours.

Player Level: All levels of hockey

Sizes: Women's 6 - 20 Junior's 5/6 - 11/12 yrs.

Fabrics: : G-Pro Stretch 700, G-Lite 500 & G-Lite 700

Minimum Order: 15

Lead Time: 8 weeks from order acceptance (See order information on page 30)



Women's Code: 27239s
Junior Code: 27242s

Please use the colour palette below to choose fabric colours for the panels on this garment.
Piping is available in Black and White only

G 755 WOMEN'S SHIRT MAIN BODY COLOUR OPTIONS (Front)



G 755 WOMEN'S SHIRT MAIN BODY COLOUR OPTIONS (Back)



G 755 WOMEN'S SHIRT CONTRAST PANEL COLOUR OPTIONS (Side)



G 655 Women's Shirt - Made to Order

G 655 Women's Shirts can be made to order in your chosen colours.

Player Level: All levels of hockey

Sizes: Women's 6 - 20 Junior's 5/6 - 11/12 yrs.

Fabrics: : G-Pro Stretch 700, G-Lite 500 & G-Lite 700

Minimum Order: 15

Lead Time: 8 weeks from order acceptance (See order information on page 30)



Women's Code: 27240s
Junior Code: 27241s

Please use the colour palette below to choose fabric colours for the panels on this garment.
Piping is available in Black and White only

G 655 WOMEN'S SHIRT MAIN BODY COLOUR OPTIONS (Front)



G 655 WOMEN'S SHIRT MAIN BODY COLOUR OPTIONS (Back)



G 655 WOMEN'S SHIRT CONTRAST PANEL COLOUR OPTIONS (Side)





G 550 Shirt - Made to Order

G 550 Shirts can be made to order in your chosen colours.

Player Level: All levels of hockey

Sizes: Women's 6 - 20

Fabrics: : G-Lite 300

Minimum Order: 12

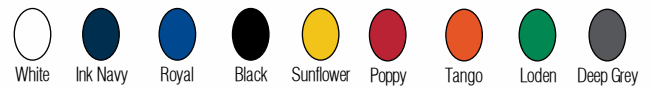
Lead Time: 8 weeks from order acceptance (See order information on page 30)



Women's Code: 27015s

Please use the colour palette below to choose fabric colours for the panels on this garment.

G 550 SHIRTS COLOUR OPTIONS



G 450 Shirt - Made to Order

G 450 Shirts can be made to order in your chosen colours.

Player Level: All levels of hockey

Sizes: Women's 6 - 20

Fabrics: :G-Lite 300

Minimum Order: 12

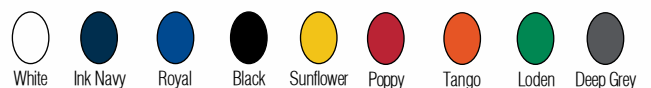
Lead Time: 8 weeks from order acceptance (See order information on page 30)



Women's Code: 27016s

Please use the colour palette below to choose fabric colours for the panels on this garment.

G 450 SHIRTS COLOUR OPTIONS



G 600 Skort - Stocked Item

Fashionable, designed skort - combination of outer skirt and comfortable stretch lycra undergarment

Player Level: All levels of hockey

Sizes: Women's 6 - 16 Junior's 5/6 - 11/12 yrs.

Fabrics: G-Lite 505

Available from stock as shown. Your logo, sponsor's logo and number can be added.



Women's Code: 61931+
Junior's Code: 61941+



Women's Code: 61933+



Women's Code: 61934+
Junior's Code: 61971+

Black

Red

White



Women's Code: 61938+
Junior's Code: 61961+



Women's Code: 61937+



Women's Code: 61932+
Junior's Code: 61951+

Navy

Green

Dark Navy

G 550 Skort - Stocked Item

Shaped skort with longer back hem for a flattering fit. Mesh panels in key areas to aid moisture-management.

Player Level: All levels of hockey

Sizes: Women's 6 - 16

Fabrics: G-Pro Stretch 705

Available from stock as shown. Your logo, sponsor's logo and number can be added.



Women's code: 600390+

Black



Women's code: 600400+

Navy

G 600 Women's Skorts - Made to Order

G 600 Women's Skorts can be made to order in your chosen colours.

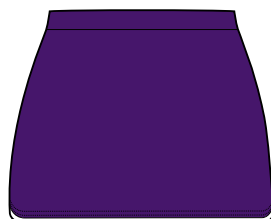
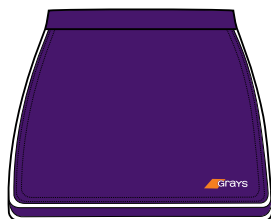
Player Level: All levels of hockey

Sizes: Women's 6 - 20

Fabrics: G-Lite 500, G-Pre Stretch 700

Minimum Order: 15

Lead Time: 8 weeks from order acceptance (See order information on page 30)



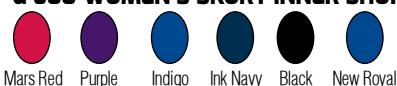
Women's code: 284535

Please use the colour palette below to choose fabric colours for the panels on this garment.

G 600 WOMEN'S SKORT OUTER COLOUR OPTIONS



G 600 WOMEN'S SKORT INNER SHORT COLOUR OPTIONS



G 500 Hockey Skort - Stocked Item

Skort design - combination of microfibre outer skirt and comfortable stretch lycra undergarment with a soft rain-resistant microfibre fabric that remains light when in use.

Player Level: All levels of hockey

Sizes: Women's 6 - 16

Fabrics: G-Com 705

Available from stock as shown. Your logo, sponsor's logo and number can be added.



Women's code: 61912+

Black



Women's code: 61935+

Navy

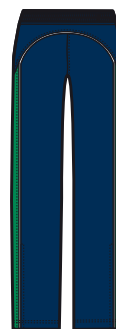


Women's code: 61913+

Maroon

Pro Team Range

The Pro Team collection will make any team feel first class. Influenced by our leading portfolio of players, this premier and elite professional range, with its technical fabrics and functional fit, will unite your team into an impressive force to be reckoned with.



Pro Team Track Top

Pro Team Track Trousers



Pro Team Hoodie

Pro Team Polo Shirt



Pro Team Tee Shirt

Storm Range

A first class collection, the Storm range has been created for all abilities by a leading team of specialist sportswear designers. Ideal for hockey players, coaches and supporters, for professional performance both on and off the pitch.



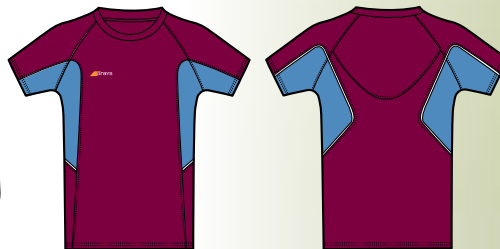
Storm Track Top



Storm Track Trousers



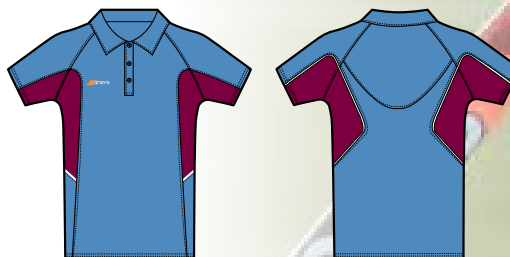
Storm Hoodie



Matrix Polo Shirt



Storm Shorts



Matrix Tee Shirt

Revolution Range

Wearing the new Revolution range, your team will dominate and leave a lasting impression on the opposition, before you even take to the pitch. This comprehensive collection offers comfort and style for all levels of play and provides your club with an outstanding teamwear solution.



Revolution Track Top



Revolution Track Trousers



Revolution Hoodie



Vapour Polo Shirt



Vapour Gym Shorts



Vapour Tee Shirt



G 700 Padded Gilet - Stocked Item

Synthetic insulation traps warm air in to keep you warm, even in the coldest weather.

Player Level: All levels of hockey

Sizes: Men's XS - 2XL, Women's 6 - 16

Fabrics: G-Quilt 605

Available from stock as shown. Your logo, sponsor's logo and number can be added.



Black

Men's Code: 60065+
Women's Code: 60067+



Navy

Men's Code: 60064+
Women's Code: 60066+

G 650 Training Jacket - Stocked Item

Lightweight shower resistant ripstop outer shell to protect from the elements including a main body that has a comfortable mesh lining.

Player Level: All levels of hockey

Sizes: Men's XS - 2XL Women's 6 - 16

Fabrics: G-WP 755

Available from stock as shown. Your logo, sponsor's logo and number can be added.



Black

Men's Code: 61061+
Women's Code: 60063+



Navy

Men's Code: 60060+
Women's Code: 60062+

G800 Jacket - Made to Order

A knee length, longer version of the Evolution Jacket. Perfect for coaches and replacements alike.

Level: All

Sizes: Men's 2XS - 3XL

Fabrics: G-WP 750

Minimum Order: 20

Lead Time Guide: 8 weeks from order acceptance.

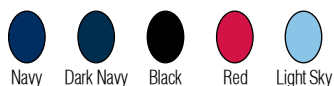
(See order information on page 30)



Code: 28814s

Please use the colour palette below to choose fabric colours for the panels on this garment.

G800 JACKET COLOUR OPTIONS



Navy Dark Navy Black Red Light Sky

G 650 Training Trouser - Stocked Item

Lightweight shower resistant ripstop outer shell to protect from the elements with a mesh lining in main body, taffeta lining in lower leg.

Player Level: All levels of hockey

Sizes: Men's XS - 2XL Women's 6 - 16

Fabrics: G-WP 755

Available from stock as shown. Your logo, sponsor's logo and number can be added.



Black

Men's Code: 60077+
Women's Code: 60079+



Navy

Men's Code: 60076+
Women's Code: 60078+

Vapour XP 1/2 Zip Jacket - Made to Order

A half-zip shower-resistant durable jacket made to compliment the Vapour XP Track Trousers.

Vapour 1/2 Zip Jackets can be made to order in your chosen colours.

Player Level: All levels of hockey

Sizes: Men's 2XS - 3XL Women's 6 - 20 Junior's 5/6 - 11/12 yrs

Fabrics: G-WP 500

Minimum Order: 12

Lead Time Guide: 8 weeks from order acceptance.

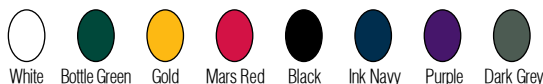
(See order information on page 30)



Men's code: 28866s
Women's Code: 27083s
Junior's Code: 27085s

Please use the colour palette below to choose fabric colours for the panels on this garment.

VAPOUR 1/2 ZIP JACKET COLOUR OPTIONS



Vapour XP Trouser - Made to Order

Elasticated waist with drawcord and knee length zip in a durable shower resistant fabric.

Vapour XP Trousers can be made to order in your chosen colours.

Player Level: All levels of hockey

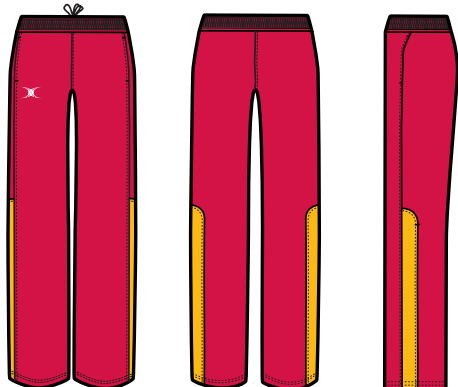
Sizes: Men's 2XS - 3XL Women's 6 - 20 Junior's 5/6 - 11/12 yrs

Fabrics: G-WP 500

Minimum Order: 12

Lead Time Guide: 8 weeks from order acceptance.

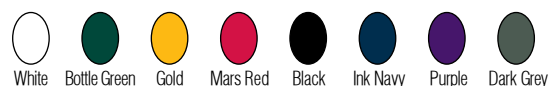
(See order information on page 30)



Men's code: 28869s
Women's Code: 27084s
Junior's Code: 27086s

Please use the colour palette below to choose fabric colours for the panels on this garment.

VAPOUR XP TROUSER COLOUR OPTIONS



G 750 Training Jacket - Stocked Item

Lightweight shower resistant outer shell to protect from the elements while training with brushed fleece in main body for added warmth.

Player Level: All levels of hockey

Sizes: Men's XS - 2XL Women's 6 - 16

Fabrics: G-WP 805

Available from stock as shown. Your logo, sponsor's logo and number can be added.



Black

Men's Code: 60057+
Women's Code: 60059+



Navy

Men's Code: 60056+
Women's Code: 60058+

Revolution Jacket - Made to Order

Shower resistant shell with a full-length center zip opening.

Revolution Jackets can be made to order in your chosen colours.

Player Level: All levels of hockey

Sizes: Men's 2XS - 3XL Junior's 5/6 - 11/12 yrs

Fabrics: G-WP 500 Revolution

Minimum Order: 12

Lead Time Guide: 8 weeks from order acceptance.

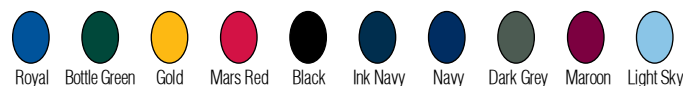
(See order information on page 30)



Code: 27200s
Junior's Code: 27243s

Please use the colour palette below to choose fabric colours for the panels on this garment.

REVOLUTION JACKET COLOUR OPTIONS



Storm Shower Jacket - Made to Order

Storm shower jackets can be made to order in your chosen colours.

Player Level: All levels of hockey

Sizes: Men's 2XS - 3XL Women's 6 - 20 Junior's 5/6 - 11/12 yrs.

Fabric: G-WP 750

Minimum Order: 12

Lead Time Guide: 8 weeks from order acceptance.

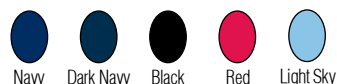
(See order information on page 30)



Men's Code: 27056s
Women's Code: 27074s
Junior's Code: 27075s

Please use the colour palette below to choose fabric colours for the panels on this garment.

STORM SHOWER JACKET COLOUR OPTIONS



Revolution 1/2 Zip Jacket - Made to Order

A full zip shower resistant jacket with mesh lining and a pack-away, adjustable hood.

Revolution 1/2 Zip Jackets can be made to order in your chosen colours.

Player Level: All levels of hockey

Sizes: Men's 2XS - 3XL Women's 6 - 20 Junior's 5/6 - 11/12 yrs

Fabric: G-WP 500 Revolution

Minimum Order: 12

Lead Time Guide: 8 weeks from order acceptance.

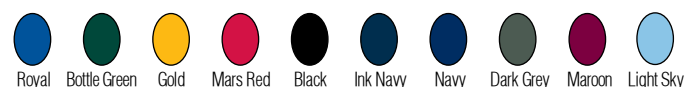
(See order information on page 30)



Men's Code: 27032s
Women's Code: 27035s
Junior's Code: 27037s

Please use the colour palette below to choose fabric colours for the panels on this garment.

REVOLUTION 1/2 ZIP JACKET COLOUR OPTIONS



Pro Team Shower Jacket - Made to Order

Breathable, water resistant jacket with a specific panel design made to compliment the Pro Team range.

Pro Team Jackets can be made to order in your chosen colours.

Player Level: All levels of hockey

Sizes: Men's 2XS - 3XL Women's 6 - 20 Junior's 5/6 - 11/12 yrs.

Fabric: G-WP 750

Minimum Order: 12

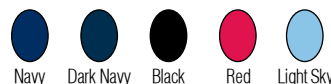
Lead Time Guide: 8 weeks from order acceptance.

(See order information on page 30)



Please use the colour palette below to choose fabric colours for the panels on this garment.

PRO TEAM JACKET COLOUR OPTIONS



Revolution Over Trouser - Made to Order

Elasticated waist with drawcord and knee-length zippers in leg to allow ease of wear.

Revolution Over Trouser can be made to order in your chosen colours.

Player Level: All levels of hockey

Sizes: Men's 2XS - 3XL Women's 6 - 20 Junior's 5/6 - 11/12 yrs

Fabrics: G-WP 500 Revolution

Minimum Order: 12

Lead Time Guide: 8 weeks from order acceptance.

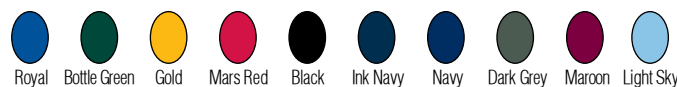
(See order information on page 30)



Men's Code: 27034s
Women's Code: 27036s
Junior's Code: 27038s

Please use the colour palette below to choose fabric colours for the panels on this garment.

REVOLUTION TROUSER COLOUR OPTIONS



Vapour Hoodie - Made to Order

A comfortable hoodie with soft cotton-feel fabric for warmth. Lined hood with drawcord (adults only), kangaroo pouch pocket and piping detail.

Vapour Hoodies can be made to order in your chosen colours.

Player Level: All levels of hockey

Sizes: Men's 2XS - 3XL Women's 6 - 20 Junior's 5/6 - 11/12 yrs.

Fabric: G-Fleece 500

Minimum Order: 12

Lead Time Guide: 8 weeks from order acceptance.
(See order information on page 30)



Men's Code: 27103s
Women's Code: 27131s
Junior's Code: 27163s

Please use the colour palette below to choose fabric colours for the panels on this garment.

Storm Hoodie - Made to Order

A comfortable hoodie with soft cotton feel fabric for warmth.

Storm Hoodies can be made to order in your chosen colours.

Player Level: All levels of hockey

Sizes: Men's 2XS - 3XL Women's 6 - 20 Junior's 5/6 - 11/12 yrs.

Fabric: G-Fleece 500

Minimum Order: 12

Lead Time Guide: 8 weeks from order acceptance.
(See order information on page 30)



Men's Code: 27071s
Women's Code: 27073s
Junior's Code: 27072s

Please use the colour palette below to choose fabric colours for the panels on this garment.

VAPOUR / STORM HOODIE COLOUR OPTIONS



Pro Team Hoodie - Made to Order

A comfortable hoodie with soft cotton-feel fabric for warmth. Lined hood with drawcord (adults only), kangaroo pouch pocket and piping detail.

Pro Team Hoodies can be made to order in your chosen colours.

Player Level: All levels of hockey

Sizes: Men's: 2XS - 3XL Women's: 6 - 20 Junior's: 5/6 - 11/12yrs.

Fabric: G-Fleece 500

Minimum Order: 12

Lead Time Guide: 8 weeks from order acceptance.
(See order information on page 30)



Men's Code: 27060s
Women's Code: 27188s
Junior's Code: 27195s

Please use the colour palette below to choose fabric colours for the panels on this garment.

Revolution Hoodie - Made to Order

A comfortable hoodie with a soft-feel fabric for warmth. Kangaroo pouch pocket and piping detail. Designed to compliment the Revolution range.

Revolution Hoodies can be made to order in your chosen colours.

Player Level: All levels of hockey

Sizes: Men's 2XS - 3XL Women's 6 - 20 Junior's 5/6 - 11/12 yrs.

Fabric: G-Fleece 500

Minimum Order: 12

Lead Time Guide: 8 weeks from order acceptance.
(See Order Information on Page30)



Men's Code: 27054s
Women's Code: 27180s
Junior's Code: 27179s

Please use the colour palette below to choose fabric colours for the panels on this garment.

PRO TEAM / REVOLUTION HOODIE COLOUR OPTIONS



G 550 Hooded Fleece - Stocked Item

Soft cotton feel fabric for warmth including a lined hood with fashionable twill tape drawcord

Player Level: All levels of hockey

Sizes: Men's XS - 2XL Women's 6 - 16

Fabrics: G-Fleece 505

Available from stock as shown. Your logo, sponsor's logo and number can be added.



Black

Men's Code: 60073+
Women's Code: 60075+



Navy

Men's Code: 60072+
Women's Code: 60074+

G 650 Thermo Fleece - Stocked Item

Water-resistant shell with padded lining for maximum thermal insulation.

Player Level: All levels of hockey

Sizes: Men's XS - 2XL Women's 6 - 16

Fabrics: G-Fleece 550

Available from stock as shown. Your logo, sponsor's logo and number can be added.



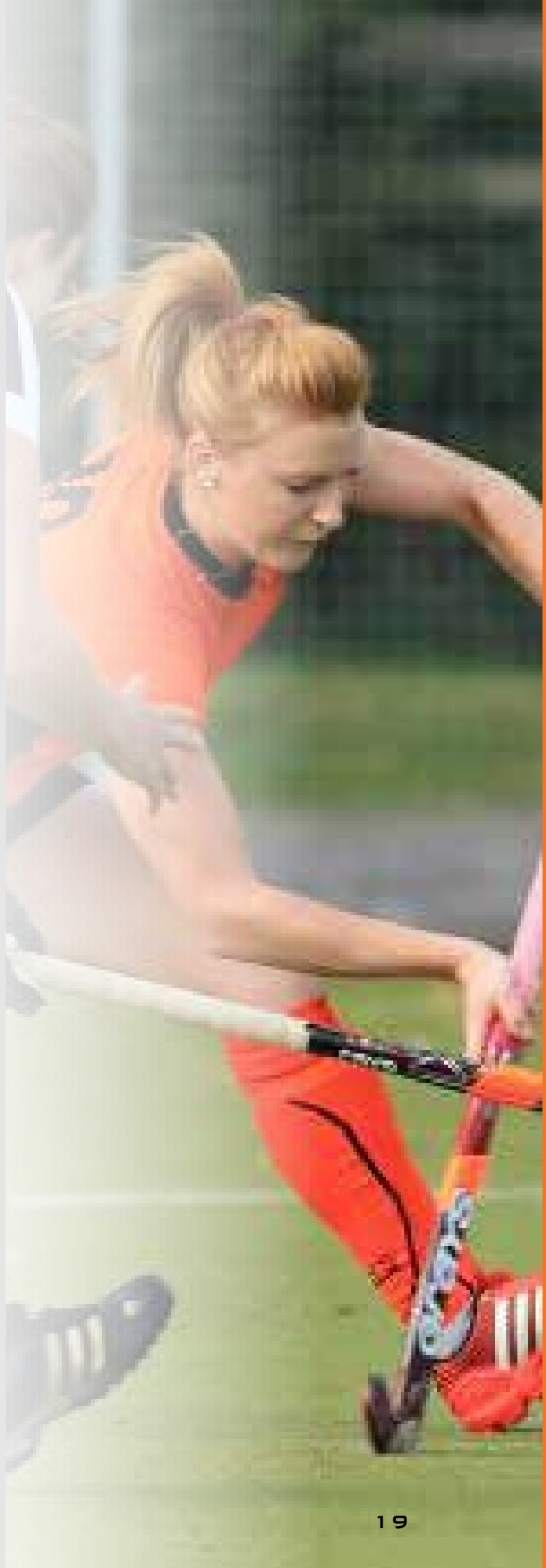
Black

Men's Code: 60069+
Women's Code: 60071+



Navy

Men's Code: 60068+
Women's Code: 60070+



Revolution Track Top - Made to Order

A full-zip track top with a soft-feel lightweight fabric for comfort. Designed to wear with Revolution Track Trousers.

Revolution track tops can be made to order in your chosen colours.

Player Level: All levels of hockey

Sizes: Men's 2XS - 3XL Women's 6 - 20 Junior's 5/6 - 11/12 yrs.

Fabric: G-Com 700

Minimum Order: 12

Lead Time Guide: 8 weeks from order acceptance.
(See order information on page 30)

Men's Code: 27051s
Women's Code: 27132s
Junior's Code: 27164s



Please use the colour palette below to choose fabric colours for the panels on this garment.

Revolution Track Trousers - Made to Order

Elasticated waist and drawcord and knee-length zippers in a soft-feel lightweight fabric. Designed to wear with Revolution Track Trousers.

Revolution Track Trousers can be made to order in your chosen colours.

Player Level: All levels of hockey

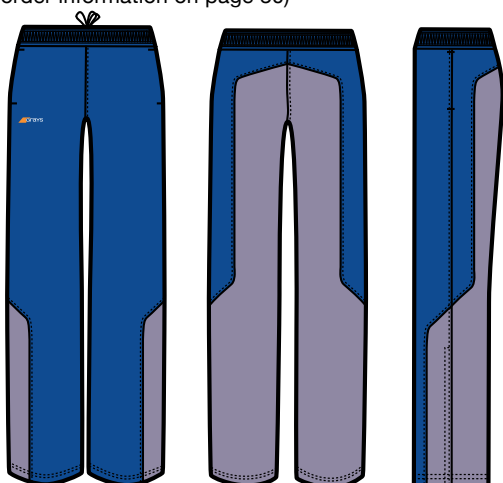
Sizes: Men's 2XS - 3XL Women's 6 - 20 Junior's 5/6 - 11/12 yrs

Fabric: G-Com 700

Minimum Order: 12

Lead Time Guide: 8 weeks from order acceptance.
(See order information on page 30)

Men's Code: 27052s
Women's Code: 27133s
Junior's Code: 27165s



Please use the colour palette below to choose fabric colours for the panels on this garment.

REVOLUTION TRACK TOP / TROUSER COLOUR OPTIONS



Pro Team Track Top - Made to Order

A full-zip track top designed to compliment the Pro Team Track Trouser in a soft-feel lightweight fabric for comfort.

Pro Team track tops can be made to order in your chosen colours.

Player Level: All levels of hockey

Sizes: Men's 2XS - 3XL Women's 6 - 20 Junior's 5/6 - 11/12 yrs.

Fabric: G-Com 700

Minimum Order: 12

Lead Time Guide: 8 weeks from order acceptance.
(See order information on page 30)



Back



Men's



Women's

Men's Code: 27061s
Women's Code: 27189s
Junior's Code: 27196s

Please use the colour palette below to choose fabric colours for the panels on this garment.

Pro Team Track Trouser - Made to Order

Elasticated waist and drawcord and knee-length zippers in a soft-feel lightweight fabric. Designed to be worn with the Pro Team Track Top.

Pro Team Track Trousers can be made to order in your chosen colours.

Player Level: All levels of hockey

Sizes: Men's 2XS - 3XL Women's 6 - 20 Junior's 5/6 - 11/12 yrs

Fabric: G-Com 700

Minimum Order: 12

Lead Time Guide: 8 weeks from order acceptance.
(See order information on page 30)

Men's Code: 27062s
Women's Code: 27190s
Junior's Code: 27197s



Please use the colour palette below to choose fabric colours for the panels on this garment.

PRO TEAM TRACK TOP / TROUSER COLOUR OPTIONS



Storm Track Top - Made to Order

A full-zip track top designed to compliment the Storm Track Trousers in a combination of soft-feel and lightweight fabrics.

Storm Track Tops can be made to order in your chosen colours.

Player Level: All levels of hockey

Sizes: Men's 2XS - 3XL Women's 6 - 20 Junior's 5/6 - 11/12 yrs

Fit Styles: Regular fit.

Fabric: G-Com 700 / G-Lite 500

Minimum Order: 12

Lead Time Guide: 8 weeks from order acceptance.

(See order information on page 30)



Men's Code: 28174s
Women's Code: 28906s
Junior's Code: 28186s

Please use the colour palette below to choose fabric colours for the panels on this garment.

Storm Track Trousers - Made to Order

Cricket-specific fit engineered to move naturally with the body.

Storm Track Trousers can be made to order in your chosen colours.

Player Level: All levels of hockey

Sizes: Men's: 2XS - 3XL Women's: 6 - 20 Junior's: 5/6 - 11/12yrs.

Fit Styles: Regular fit.

Fabric: G-Com 700 / G-Lite 500

Minimum Order: 12

Lead Time Guide: 8 weeks from order acceptance.

(See Order Information on Page52)



Men's Code: 28175s
Women's Code: 28907s
Junior's Code: 28187s

Please use the colour palette below to choose fabric colours for the panels on this garment.

STORM TRACK TOP / TROUSER MAIN PANEL OPTIONS



STORM TRACK TOP / TROUSER CONTRAST PANEL OPTIONS



Matrix Polo Shirt - Made to Order

Moisture controlling materials allow air to flow close to the skin and draw heat away from the body.

Matrix polo shirts can be made to order in your chosen colours.

Player Level: All levels of hockey

Sizes: Men's 2XS - 3XL Women's 6 - 20 Junior's 5/6 - 11/12 yrs.

Fabric: G-Lite 600

Minimum Order: 12

Lead Time Guide: 8 weeks from order acceptance.

(See order information on page 30)



Please use the colour palette below to choose fabric colours for the panels on this garment.

Matrix Tee Shirt - Made to Order

A classic crew neck for a comfortable fit.

Matrix tee shirts can be made to order in your chosen colours.

Player Level: All levels of hockey

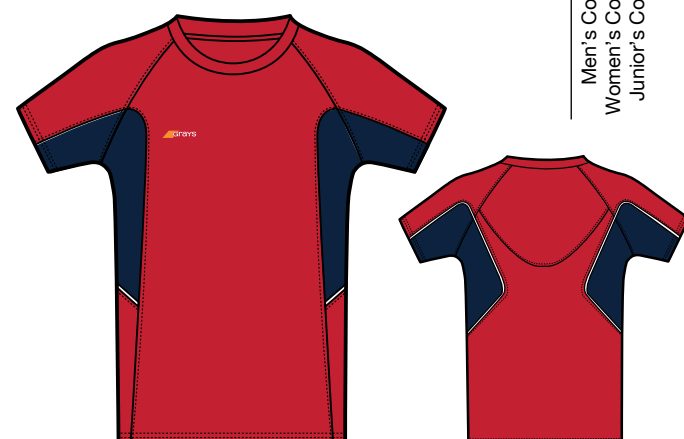
Sizes: Men's 2XS - 3XL Women's 6 - 20 Junior's 5/6 - 11/12 yrs.

Fabric: G-Lite 600

Minimum Order: 12

Lead Time Guide: 8 weeks from order acceptance.

(See order information on page 30)



Please use the colour palette below to choose fabric colours for the panels on this garment.

MATRIX POLO / TEE SHIRT COLOUR OPTIONS



Pro Team Polo Shirt - Made to Order

A Lightweight polo shirt with unique panelling made from moisture management materials. 3 button placket and collar for UV protection.

Pro Team polo shirts can be made to order in your chosen colours.

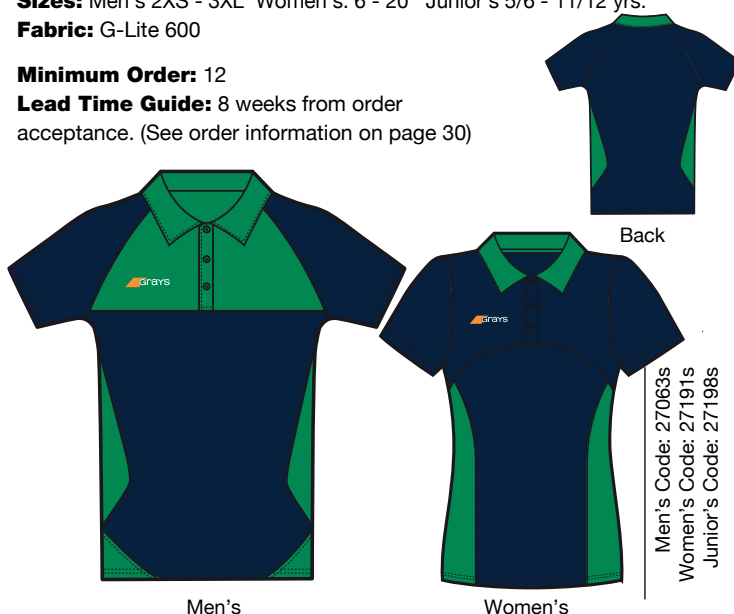
Player Level: All levels of hockey

Sizes: Men's 2XS - 3XL Women's 6 - 20 Junior's 5/6 - 11/12 yrs.

Fabric: G-Lite 600

Minimum Order: 12

Lead Time Guide: 8 weeks from order acceptance. (See order information on page 30)



Please use the colour palette below to choose fabric colours for the panels on this garment.

Pro Team Tee Shirt - Made to Order

A lightweight tee shirt with unique panelling made from moisture management materials. Designed to compliment the Pro Team range.

Pro Team tee shirts can be made to order in your chosen colours.

Player Level: All levels of hockey

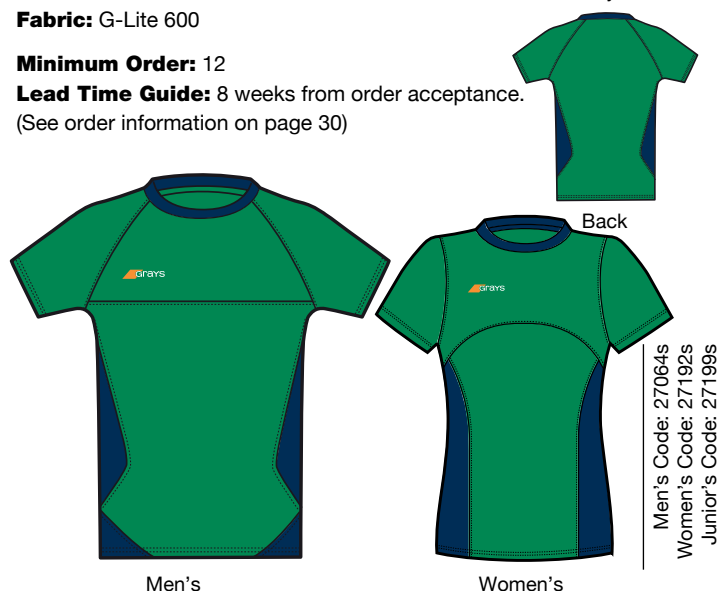
Sizes: Men's 2XS - 3XL Women's 6 - 20 Junior's 5/6 - 11/12 yrs.

Fabric: G-Lite 600

Minimum Order: 12

Lead Time Guide: 8 weeks from order acceptance.

(See order information on page 30)



Please use the colour palette below to choose fabric colours for the panels on this garment.

PRO TEAM POLO / TEE SHIRT COLOUR OPTIONS



Vapour Polo Shirt - Made to Order

Manufactured from performance fabrics with soft-feel and moisture management properties to keep you cool.

Vapour Polo Shirts can be made to order in your chosen colours.

Player Level: All levels of hockey
Sizes: Men's 2XS - 3XL Women's: 6 - 20 Junior's 5/6 - 11/12 yrs.
Fabric: G-Lite 600

Minimum Order: 12
Lead Time Guide: 8 weeks from order acceptance.
(See order information on page 30)

Men's Code: 28870s
Women's Code: 27129s
Junior's Code: 28960s



Please use the colour palette below to choose fabric colours for the panels on this garment.

Vapour Tee Shirt - Made to Order

Moisture-controlling materials allow air to flow close to the skin and draw heat away from the body.

Vapour Tee Shirts can be made to order in your chosen colours.

Player Level: All levels of hockey
Sizes: Men's 2XS - 3XL Women's: 6 - 20 Junior's 5/6 - 11/12 yrs.
Fabric: G-Lite 600

Minimum Order: 12
Lead Time Guide: 8 weeks from order acceptance.
(See order information on page 30)

Men's Code: 28871s
Women's Code: 27130s
Junior's Code: 28961s



Please use the colour palette below to choose fabric colours for the panels on this garment.

Performance Polo Shirt - Made to Order

Moisture controlling materials allow air to flow close to the skin and draw heat away from the body.

Performance Polo Shirts can be made to order in your chosen colours.

Player Level: All levels of hockey
Sizes: Men's 2XS - 3XL Women's: 6 - 20 Junior's 5/6 - 11/12 yrs.
Fabric: G-Lite 600, G-Mesh 400

Minimum Order: 12
Lead Time Guide: 8 weeks from order acceptance.
(See order information on page 30)

Men's Code: 27315s
Junior's Code: 27317s



Please use the colour palette below to choose fabric colours for the panels on this garment.

Performance Tee Shirt - Made to Order

Shaped panels contour the body for great fitting garment classic crew neck for comfort fit.

Performance Tee Shirts can be made to order in your chosen colours.

Player Level: All levels of hockey
Sizes: Men's 2XS - 3XL Junior's 5/6 - 11/12 yrs.
Fabric: G-Lite 600, G-Mesh 400

Minimum Order: 12
Lead Time Guide: 8 weeks from order acceptance.
(See order information on page 30)

Men's Code: 27316s
Junior's Code: 27318s



Please use the colour palette below to choose fabric colours for the panels on this garment.

VAPOUR POLO / TEE SHIRT AND PERFORMANCE POLO / TEE SHIRT MAIN BODY COLOUR OPTIONS



PERFORMANCE POLO / TEE SHIRT CONTRAST PANEL COLOUR OPTIONS



Luggage

The Grays Hockey luggage range has been designed to meet the demands of players. Whatever their level, there is a bag to meet the need, in a selection of colours.

Distinctive Grays Hockey design allows teams to look the same – from team kits bags to individual holdalls.

Consideration has been given, and space left, on all club bags for further embellishment with club logos, player names, numbers and sponsor's logos.

Compact Holdall - Stocked Item

A Mid size player bag with large kit compartment with four additional end pockets for shoes / accessories.

SIZE: H:35cm x L:62cm x W:32cm



Black/Orange

Code: 6602301

Transit Pro Holdall - Stocked Item

"Pull along" style kit bag with easy drag wheels and a large main compartment.

SIZE: H:32cm x L:77cm x W:28cm



Black/Orange

Code: 6600201

Traveller Holdall - Made to Order

This Holdall can be embellished with the team or school logo of your choice.

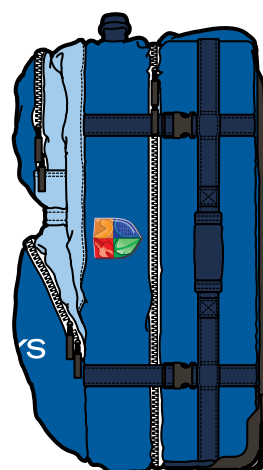
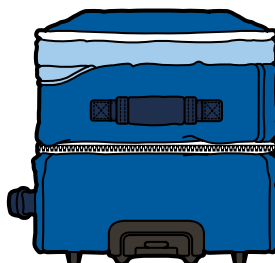
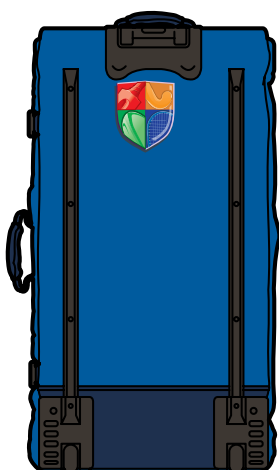
SIZE: H:35cm x L:62cm x W:32cm

Minimum Order Quantity: 25

Lead Time: 10 weeks from artwork sign-off. (See order information on page 30)



Club and Sponsor logo or squad number can be printed on the bags in the positions shown for an additional charge.



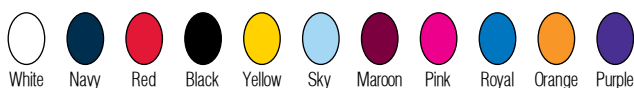
Code: 27253s

Please use the colour palettes below to choose fabric colours for the panels, zips and piping on this luggage.

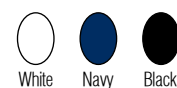
PANEL COLOURS



PIPING COLOURS



ZIP COLOURS



PLEASE NOTE: These colours are not matched to the clothing fabric colours

GX100 Rucksack - Stocked Item

Stylish Functional rucksack bag that is an ideal bag for coaches and Junior'ss with a very useful Internal stick compartment for carrying stick to training.

SIZE: H:30cm x L:40cm x W:15cm



Black/Orange

Code: 6601801

GX 7000 - Stocked Item

Carry-all bag, ergonomically designed to maximize storage space – ideal for all levels of player on match day with 2 Large storage compartments for shin pads, shoes, and other match day kit. It has a single adjustable padded strap design and smaller valuables pocket. There is also internal stick storage for up to 4 sticks with padded protection.



Blue

Code: 6601101



Pink

Code: 6601103



Red

Code: 6601102



Orange

Code: 6601104

Rucksack - Made to Order

Rucksacks can be made to order in your chosen colours.

SIZE: H:30cm x L:40cm x W:15cm

FABRIC: 600D Polyester

Minimum Order Quantity: 25

Lead Time: 10 weeks from artwork sign-off. (See order information on page 30)



Code: 28482s



Club and Sponsor logo or squad number can be printed on the bags in the positions shown for an additional charge.

GX 7000 Bag - Made to Order

GX 7000 BAG can be made to order in your chosen colours.

SIZE: H:25cm x L:100cm x W:19cm

FABRIC: 1200 Ripstop / Durable Polyester Twill



Club and Sponsor logo or squad number can be printed on the bags in the positions shown for an additional charge.



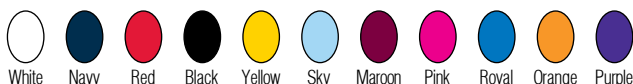
Code: 27326s

Please use the colour palettes below to choose fabric colours for the panels, zips and piping on this luggage.

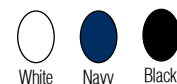
PANEL COLOURS



PIPING COLOURS



ZIP COLOURS



PLEASE NOTE: These colours are not matched to the clothing fabric colours

Revo Stick Bag - Stocked Item

Ideal for back to school and Junior’s club market including an overlap lid with length adjustable stud fasteners for different lengths of Junior’s sticks

SIZE: L:101cm x W:16cm x H:-
FABRIC: 1200 Ripstop / durable polyester twill



Revo Stick Bag - Made to Order

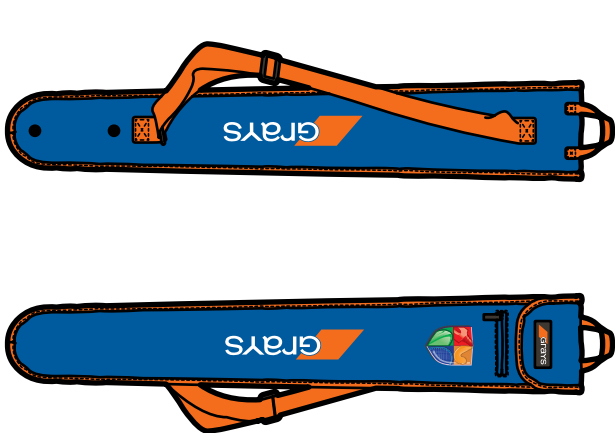
Stick Bags can be made to order in your chosen colours.

SIZE: L:101cm x W:16cm x H:-
FABRIC: 1200 Ripstop / Durable Polyester Twill

Minimum Order Quantity: 25
Lead Time: 10 weeks from artwork sign-off.
 (See order information on page 30)



Club and Sponsor logo or squad number can be printed on the bags in the positions shown for an additional charge.



Please use the colour palettes below to choose fabric colours for the panels, zips and piping on this luggage.

PANEL COLOURS	PIPING COLOURS	ZIP COLOURS
<div>White</div> <div>Navy</div> <div>Red</div> <div>Black</div> <div>Maroon</div> <div>Pink</div> <div>Royal</div> <div>Orange</div>	<div>White</div> <div>Navy</div> <div>Red</div> <div>Black</div> <div>Yellow</div> <div>Sky</div> <div>Maroon</div> <div>Pink</div> <div>Royal</div> <div>Orange</div> <div>Purple</div>	<div>White</div> <div>Navy</div> <div>Black</div>

PLEASE NOTE: These colours are not matched to the clothing fabric colours

Hockey Balls

Astrotec Balls - Stocked Item

Rotationally moulded ball with durable dimpled pattern, PVC cover, ideal for top level use on synthetic pitches. Used by top level clubs



Match Balls - Stocked Item

Durable dimpled pattern PVC cover, ideal for training and practice



Matchplay Balls - Stocked Item

Top selling PVC construction seamless ball that is ideal for training and practice



Custom Options

CUSTOM COLOURS:



MINIMUM QUANTITY: 120

HAVE YOUR OWN LOGO PRINTED ONTO ONE OF THESE BALLS IN WHITE, PINK, YELLOW OR ORANGE



Training Equipment

Water Bottle Carrier - Stocked Item

Easy to fold away design with 8 Bottle capacity



Code: 900154

Water Bottle - Stocked Item

Grays branded black bottle one litre capacity



Code: 900148

Your own Kit website!

Shop through your own website

To support your Club or School, and to help relieve the burden of kit administration, Grays will build you a Club or School kit website absolutely free.

Your Club members & parents can view your chosen range and order direct from us. We will look after everything.

Please ask your Grays Contact or telephone:

01580 883120



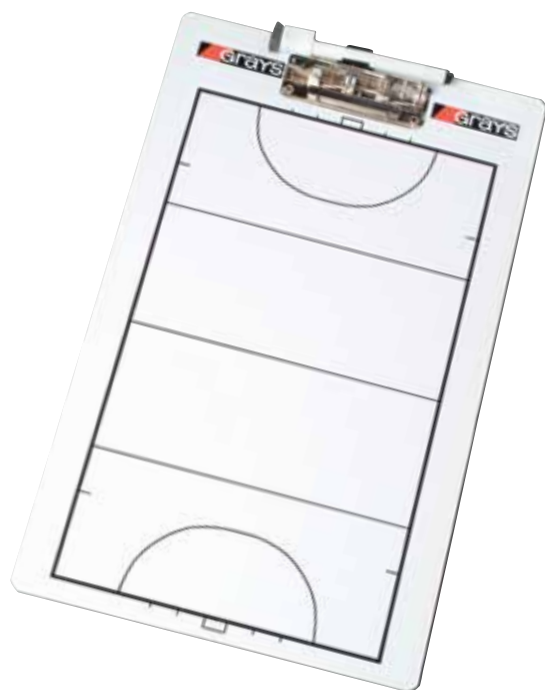
- A free service from Grays
- Accessed via your own website with Club /School colours and logos.
- Your chosen range shown.
- All payments taken care off.
- Product dispatched within days.



Coaching Accessories

Coaching Clip Board - Stocked Item

Plastic clipboard with spring-release mechanism. Pitch markings both sides Includes a full pitch, half pitch and indoor pitch mark.



Code: 900147

Coaching Folder - Stocked Item

Coaching folder with zip fastening, numbered magnetic pieces and felt-tip pen. Full pitch, half pitch and indoor pitch markings.



Code: 900152

Safety Markers - Stocked Item

Flat markers that allows ball to remain in contact with pitch surface and ensures players do not trip.

Reduced thickness sold in packs of 6: Red, Green, Blue, Yellow, Orange and White



Code: 9002+

Speed Ladder - Stocked Item

These fabric-covered metal rods are suitable for indoor use and help to develop fast footwork and running techniques. Complete set including bag.



Code: 900153

Order Procedures

Below we have laid out clearly the processes you will experience and the requirements that you will need to fulfil in order for us to quickly and accurately action your teamwear order. Each option has different complexities and requirements, which are detailed below. Throughout the process, your local Gilbert representative and the design team will make sure that you are kept up to speed at every stage of the production process, prior to delivery.

For more detailed information, to place an order or to discuss a specific requirement call 01580 883120.

OPTION 1

SUBLIMATED TEAMWEAR

Our team will work with you, creating a series of design options for you to choose from. They will guide you through the entire process making sure that you are kept informed at all times.

1. Design consultation

You can chose a set design or we can create a new design and/or work with you, using your existing strip as the basis for your teamwear design. If you would like us to develop a completely new and unique design, there may be an extra charge.

2. Supply crests and logos in digital format and advise quantities and personalisation

All artwork for crest/logos and sponsor logos must be supplied in digital format; preferably vector EPS files, PDF, AI/CDR formats or a DST file for embroidery. If these files are not available, there may be a re-draw charge. If you require personalisation (e.g. numbers/player names/initials) please send us written details for each size of garment you require.

3. Approval of Final Digital Proof and Proforma

Once you have agreed the design and logos, we will ask you to approve a Final Digital Proof ("FDP") and a Proforma. The FDP shows you the garment, with all logos/crests, the quantity required by size and any personalisation required. The Proforma will show the price, payment terms and the email address we will use when we need to contact you. It is important that both documents are checked carefully.

4. Order Acceptance



On receipt of your approval (and if required your payment/deposit) we will accept the order and advise you of the expected delivery date.

5. Pre-production checks

Prior to starting production we will e-mail you two sample images to make sure the factory has properly understood your order. Production will be held until we receive your approval to avoid delaying your order, we ask that you e-mail your approvals within 3 days of receiving each image. The first will be the factory proofs showing the sublimated colours and design. The second will show the detail of your logos. Please check each image very carefully as the designs you approve will be what is made. For a charge, if you wish to approve an actual physical "factory proof" rather than approve an e-mailed image, you should add 2 weeks to the standard lead-time. If you wish to approve a physical sample of the made up garment, you should add 3-4 weeks to the standard lead-time. Please allow a further 3-4 weeks from the time you confirm any further minor changes if you wish to receive another made up sample.



Lead Time Guide - 8 weeks from order acceptance

2014		Grays	
Style Name	MEN'S G550 SUBLIMATED SHIRT	Fabric Info	Fabric No: 009 - LH1524 100% Polyester
Style ID Code	HHY14C005		
Purchase Code	270175		
Order Number	BP16046		

Size	Quantity	Number/Letters
2XS		
XS		
S	12	JACKSON 7
M		
L		
XL		
2XL		
3XL		

Position	Left Chest	Right Chest	Upper Center Chest	Center Chest	Lower Center Chest	Right Upper Sleeve	Right Lower Sleeve	Left Upper Sleeve	Left Lower Sleeve
All logo position are as per artwork									
Application:	SUBLIMATION	SUBLIMATION							
Logo colours:	Refer to artwork file	021c & WHITE							
Logo size:	5.5cm x 6.5cm	1.5cm x 7cm							

Position	Back Neck	Upper Center Back	Center Back	Middle Lower Back	Lower Back	Label	Hemtag	Additional Details
All logo position are as per artwork								
Application:	SUBLIMATION	SUBLIMATION	SUBLIMATION					
Logo colours:	485c, 294c, White	WHITE	WHITE					
Logo size:	5.5cm WIDE x 3cm HIGH	4CM HIGH	20CM HIGH					

Sublimated Kit

Sample early stage design template prepared for customer approval.



Sublimated Kit

Sample 'Factory Pattern' proof

OPTION 2

MADE TO ORDER ("MTO") TEAMWEAR

The simplest way to create teamwear in your own colour combination.

1. Select MTO garments and choose colours

Tell us the garment code (ends with an S) of the garment you would like us to make and then choose from the MTO colours offered for that garment. We have standardised the names of colours across our range to help you choose garments that are made in similar colours. For example, if you are ordering a garment in "RED" it will be a similar shade of red to another garment available in "RED" but a garment with a different name; e.g. "MARS RED" or "SCARLET" will be a different shade. If ordering garments with different names, we recommend you ask us to show you swatches before you place your order. If you are looking for colours to be very consistent across garments, we recommend you don't order garments with different colour names.

2. Supply crests and logos in digital format

All artwork for crest/logos and sponsor logos must be supplied in digital format; preferably vector EPS files, PDF, AI/CDR formats or a DST file for embroidery. If these files are not available, there may be a re-draw charge. If you require personalisation (e.g. numbers/player names/initials) please send us written details for each size of garment you require.

3. Approval of final digital proof and proforma

Once you have agreed the design and logos, we will ask you to approve a final digital proof ("FDP") and a proforma. The FDP shows you the garment with all logos/crests, the quantity required by size and any number or name. The Proforma will show the price, payment terms and the e-mail address we will use when we need to contact you. It is important that both documents are checked carefully.

4. Order Acceptance

On receipt of your approval (and if required your payment/deposit) we will accept the order and advise you of the expected delivery date.

5. Pre-production check

Prior to starting production, we will e-mail you an image of each embellishment sample to make sure the factory has properly understood your requirements. Production will be held until we receive your approval. To avoid delaying your order, we ask that you e-mail your approval within 3 days of receiving the image(s). Please check each image very carefully as the embellishment you approve will be produced on your teamwear.

Lead Time Guide - 8 weeks from order acceptance

Customised Kit

Sample early stage design template prepared for customer approval.

OPTION 3

EMBELLISHMENT OF STOCKED ITEMS

The quickest way to create teamwear with your identity.

1. Approval of embellishments

Select the garments you require with size and quantity.

2. Supply of all crests and logos

Before we can accept an order for embellished stocked items, we need to get your approval for each embellishment we are to supply. If you want us to make garments with a new crest/logo, you need to send details in digital format; preferably vector EPS files, PDF, AI/CDR format or a DST file for embroidery (if these files are not available there may be a re-draw charge). To prepare the right embellishment detail, we also need to know for each garment you require: the product code (Stocked garments end with a +), the specific colour name, the expected range of sizes and what personalisation (e.g. numbers and player names/initials) is needed. It is not necessary to supply the exact quantities and personalisation by size at this stage but it will speed the process if you can. We will then send you an image of sample embellishments for your review and approval. We can advise current stock levels at any stage of the process but we can only confirm stock availability once the order is accepted. Samples of stocked items can be supplied but they are chargeable to you. They will be credited 100% if returned within 2 weeks and in perfect re-saleable condition. If returned samples can't be resold (eg. missing tickets/packaging), or are returned late, we will not be able to credit 100%.

2. Check all garments are the correct sizes before embroidery

Once you are happy with your embellishments and told us what you want, we will check that there is stock and then ask you to approve a final digital proof ("FDP") and a proforma. The FDP shows you the garment with all logos/crests, the quantity required by size and any personalisation (e.g. numbers and player names/initials). The Proforma will show the price, payment terms and the contact e-mail address. It is important that both documents are checked carefully.

3. Order Acceptance

On receipt of your approval (and if required your payment/deposit) we will accept the order and advise you of the expected delivery date. Stock availability cannot be confirmed until the order is accepted, so to avoid the risk of stock-outs we ask that you approve the PDF/Proforma and make any required payment as quickly as possible.

Lead Time Guide - 2-4 weeks from order acceptance depending on time of year.

OPTION 4

STOCKED ITEMS (no embellishment)

Order garments from our stocked range without any embellishment for the quickest delivery.

Lead Time Guide - 1 week from order placement subject to stock availability and credit.

Embellished Stock Items

Sample early stage design template prepared for customer approval.

Embellishment Services

A complete embroidery and printing service is available from Grays for you to personalise your garments. Please speak to your Grays representative for more information.

1. PRINTING

Digital printing services are available for your crest and sponsor's logos.

- Please supply vector images of the crest or logo in EPS, PDF or AI / CDR formats where possible.
- Whilst J-Pegs can sometimes be used, there will be a logo redraw charge if we cannot use the format supplied.
- We will apply text in Arial Bold unless you advise on alternative fonts.
- We will use Pantone solid coated colour references supplied by you. If not available, we will match the colours as closely as we can from the vector designs supplied.
- We will e-mail an image of a printed sample for your approval.

2. NUMBERING, NAMES AND INITIALS

- For personalisation we will use Arial Bold font in black and white unless you request an alternative.
- Font sizes have been standardised as noted below in order to fit our garments.
- Please supply by garment size full details of the name, number and initials required.

1 2 3 4 5 6 7 8 9 0
A B C D E F G H I J

Numbers - 12/15/18cm

Names - 2.4/4cm

Initials - 2/3cm

3. EMBROIDERY

Embroidery of your crest and sponsors logos is available if preferred.

- If the logo/crest has already been set up, please supply the embroidery DST file with run sheet (specific thread colour sequence).
- If the logo/crest has not been set up please supply the correct vector images in any of the following formats: EPS, PDF or AI/CDR. There is set-up charge to create a DST file.
- Please advise size of logo and how they should appear on dark and light garments.
- Please advise Madeira thread colours if known, if not, standard Grays colours will be used.
- We will e-mail an image of your actual embroidery for your approval.

4. FABRIC SUITABILITY

Please note that some fabrics in the Grays range work better with printed embellishment rather than embroidery. We will be happy to advise you on the most appropriate application method for each garment chosen.

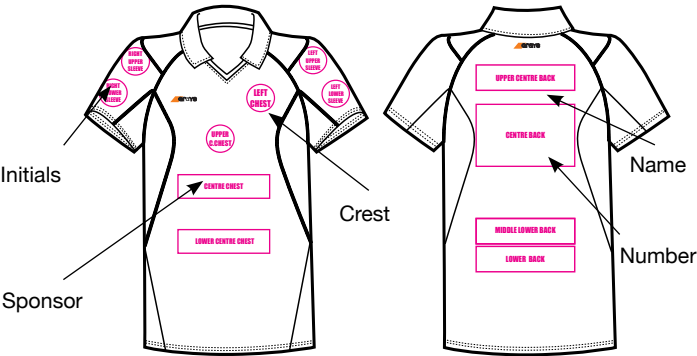
PLEASE NOTE:

Grays cannot accept responsibility for the unauthorised use of any third party logos or images. Grays reserve the right to refuse to apply any name or logo that we consider to be offensive or unsuitable.

Embellishment Positions

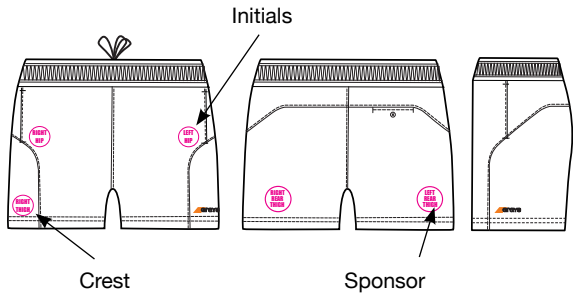
MATCHWEAR - SHIRTS

All Grays match shirts will be branded as shown below.



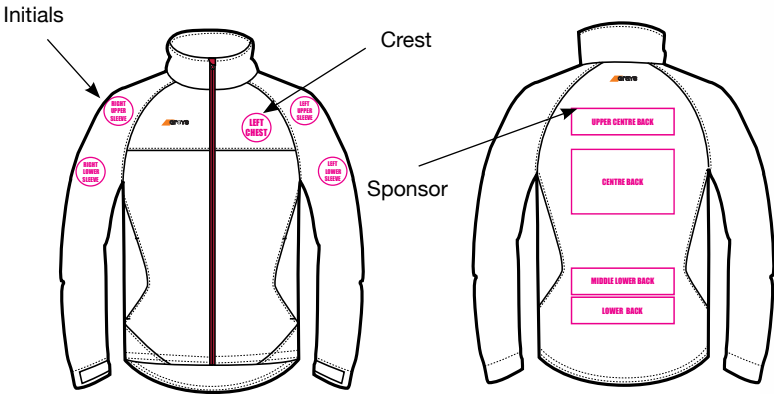
MATCHWEAR - SHORTS

All Grays match shorts will be branded as shown below.



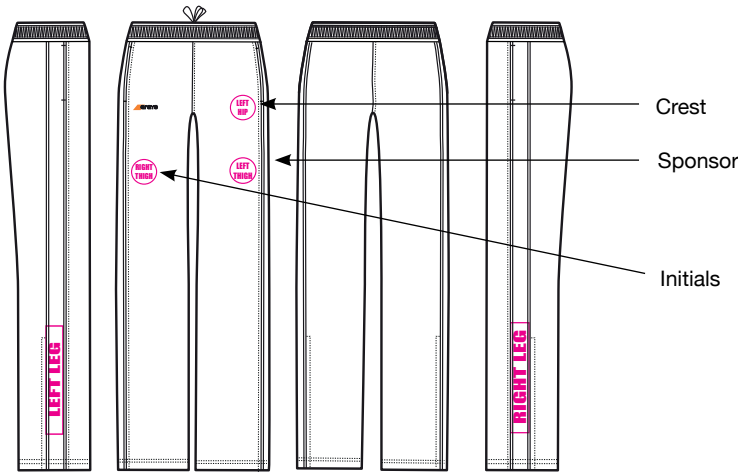
TRAINING WEAR - JACKETS

All Grays training tops should be branded as shown below.



TRAINING WEAR - TROUSERS

All Grays training tops should be branded as shown below.



PLEASE NOTE:

For MTO hoodies, fleeces and formal shirts only, the Grays brand may be applied using a tonal colour in keeping with the garment. This is the only exception from the standard Orange/White application. Other logos may be added to the garments as design features, such as logo tabs sewn into the seams, or logos highlighting technical features of the garment.

Glossary of Grays fabric types

FIT

G-Pro Stretch 700/705

A Lightweight, performance fabric that stretches to provide an athletic fit and has been developed to be sublimated with your own design. The construction delivers a soft and light texture. This fabric minimises restriction of movement, thus improving performance and comfort in play. This fabric is also stocked in solid colours.

WARMTH

G-Quilt 605

Lightweight and versatile, this offers superb warmth without weight and is remarkably effective at keeping cold out. Quilted, synthetic insulation traps air in to keep you warm, even in the coldest weather.

G-Fleece 550

Stretch fleece provides warmth without weight.

G-Fleece 500/505

Is a traditional fleece fabric with excellent quality and weight. An attractive smooth face with a brushed reverse, it offers superb comfort and warmth.

COMFORT

G-Com 700/705

A lightweight woven fabric, ideally suited for leisure-wear styles in a range of climates. Thanks to a soft peach-like feel. Specifically selected for track suits, this fabric is extremely popular with our professional athletes.

G-Com 500/505

A more durable and traditional woven fabric featuring a soft peach-feel with a matt finish.

LIGHTWEIGHT

G-Lite 700/ G-Lite 705

A light-weight mesh that features a honeycomb construction with a softer, lighter feel. It has excellent drying properties for added comfort. Suitable for training and leisure needs.

G-Lite 600

An extremely light-weight, soft-touch fabric featuring a highly-breathable construction that allows moisture vapours to flow through. This acts to wick perspiration away from your skin, hence minimising perspiration and keeping your body cool and dry.

G-Lite 500/300/505/555

A breathable fabric construction that allows moisture to flow through. Actively wicks perspiration away from your skin, keeping you cool and dry.

G-Mesh 400

Specially designed wider mesh weave for maximum ventilation in those areas where your body needs it most.

WATER RESISTANT

G-WP 750/755/805

Developed to give good water resistance and breathability to keep you dry and comfortable. This protects from the elements while out on the pitch and also for everyday use.

G-WP 500 & G-WP 500 Revolution

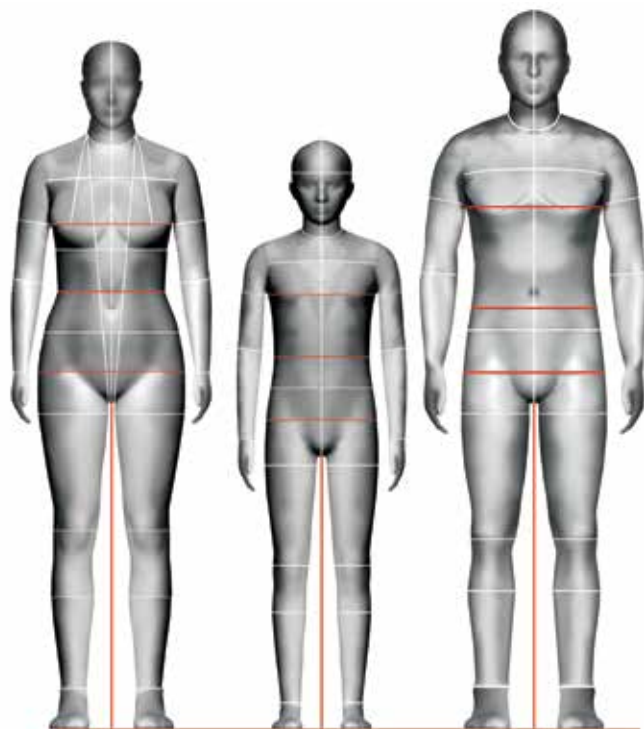
A modern, high tech, woven taslon fabric which is strong, durable, water-resistant and wind-resistant. Ideal for outerwear garments suitable for training in every day of the week, and offering reliable protection from the weather.

Size Chart

Finding the perfect size isn't always easy

The fit of your clothes depends on many things, including the cut, fabric, styling and even the undergarments you are wearing! By following our body guide and how to measure guide, we hope to find you the best possible fit.

It is always suggested that you measure more than once, as your posture changes when you move and sometimes affects the measurement you take.



MEASURING

CHEST CIRCUMFERENCE

Measure all the way around- taking the tape approximately 2.5cm from pit of arm, around the fullest part of the chest. Try to keep the tape level.

WAIST CIRCUMFERENCE

Measure all the way around- taking the tape around the natural waist (this is the narrowest part of your waist). Try to keep your tape measure level.

Our trousers and shorts are elasticated so there is always plenty of room for movement here - if you are confused use the hip measurement.

LOW HIP CIRCUMFERENCE

Measure all the way around taking the tape around the fullest part of the bottom.

Try to keep the tape level.

INSIDE LEG

Measure from the top of the inside leg to bottom of your heel. Please remember you can always take a trouser up if they are a little long, try turning the waistband or sewing the hem.

GENERAL TIPS

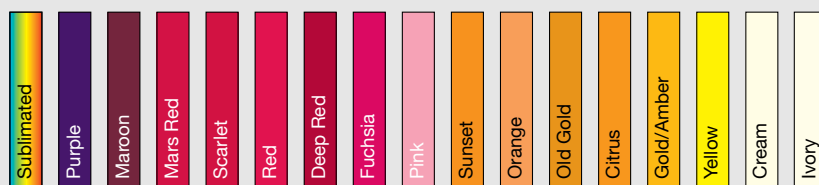
1. Measure yourself wearing underwear - do not measure over clothing.
2. Stand straight and keep both feet on the floor.
3. Make sure the tape measure is kept level.
4. Ask a friend to help take your measurements (its sometimes easier to have help).

Our ranges are designed with layering in mind. If you buy a jacket for your body size, you can be sure you will be able to fit a top and a light sweater underneath.

All measurements are an approximate guide.

Men's SIZING	XXS	XS	S	M	L	XL	2XL	3XL
CHEST cm	89	93	97	101	105	110	115	120
inches	35	36½	38	39½	41	43¼	45¼	47½
WAIST cm	72 - 76	76 - 80	80 - 84	84 - 88	88 - 93	93 - 98	98 - 103	103 - 108
inches	26¾ - 28½	28½ - 30	30 - 31½	31½ - 33	33 - 36½	36½ - 38½	38½ - 40½	40½ - 42½
LOW HIP cm	88	92	96	100	105	110	115	120
inches	34¾	36½	38	39½	41½	43¼	45¼	47½
INSIDE LEG (Standard) cm	76	78	80	82	83	84	85	86
inches	30	30¼	31½	32½	32¾	33	33½	34
LADIES SIZING	6	8	10	12	14	16	18	20
CHEST cm	78	82	86	90	94	98	102	106
inches	30¾	32½	34	35½	37	38½	40	41¾
WAIST cm	55 - 60	60 - 64	64 - 68	68 - 72	72 - 76	76 - 80	80 - 84	84 - 88
inches	22 - 23½	23½ - 25¼	25¼ - 26¾	26¾ - 28½	28½ - 30	30 - 31½	31½ - 33	33 - 34½
LOW HIP cm	86	90	94	98	102	106	110	114
inches	34	35½	37	38½	40	41¾	43¼	45
INSIDE LEG (Standard) cm	75	76	77	78	79	80	81	82
inches	29½	30	30¼	30¾	31⅞	31½	32	32¼
CHILDRENS SIZING	AGE 5 - 6	AGE 7 - 8	AGE 9 - 10	AGE 11 - 12				
CHEST cm	63.5	67.5	71.5	75.5				
inches	25	26½	28	29½				
WAIST cm	51.5 - 55.5	55.5 - 59.5	59.5 - 63.5	63.5 - 67.5				
inches	20 - 21½	21½ - 23¼	23¼ - 25	25 - 26½				
LOW HIP cm	66	70	74	78				
inches	26	27½	29	30½				
INSIDE LEG (Standard) cm	55	60	65	70				
inches	21	23½	25½	27½				

Fabric Options Colour Chart



MADE TO ORDER FABRIC CODES

COLOUR OPTIONS AVAILABLE FOR EACH FABRIC

G-Pro Stretch 1000																	
G-Pro Stretch 700																	
G-Fleece 500																	
G-Com 700																	
G-Com 500																	
G-Lite 700																	
G-Lite 600																	
G-Lite 500																	
G-Lite 300																	
G-Mesh 400																	
G-WP 750																	
G-WP 500																	
G-WP 500 Revolution																	
Socks																	

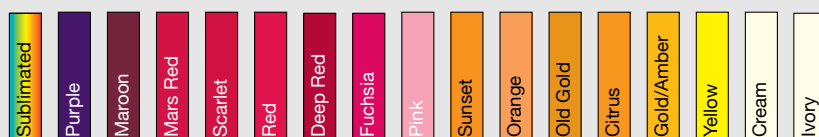
STOCK FABRIC CODES

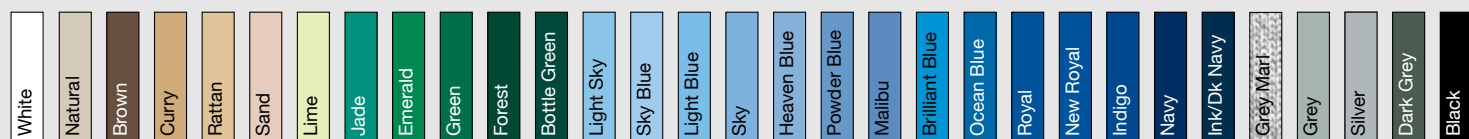
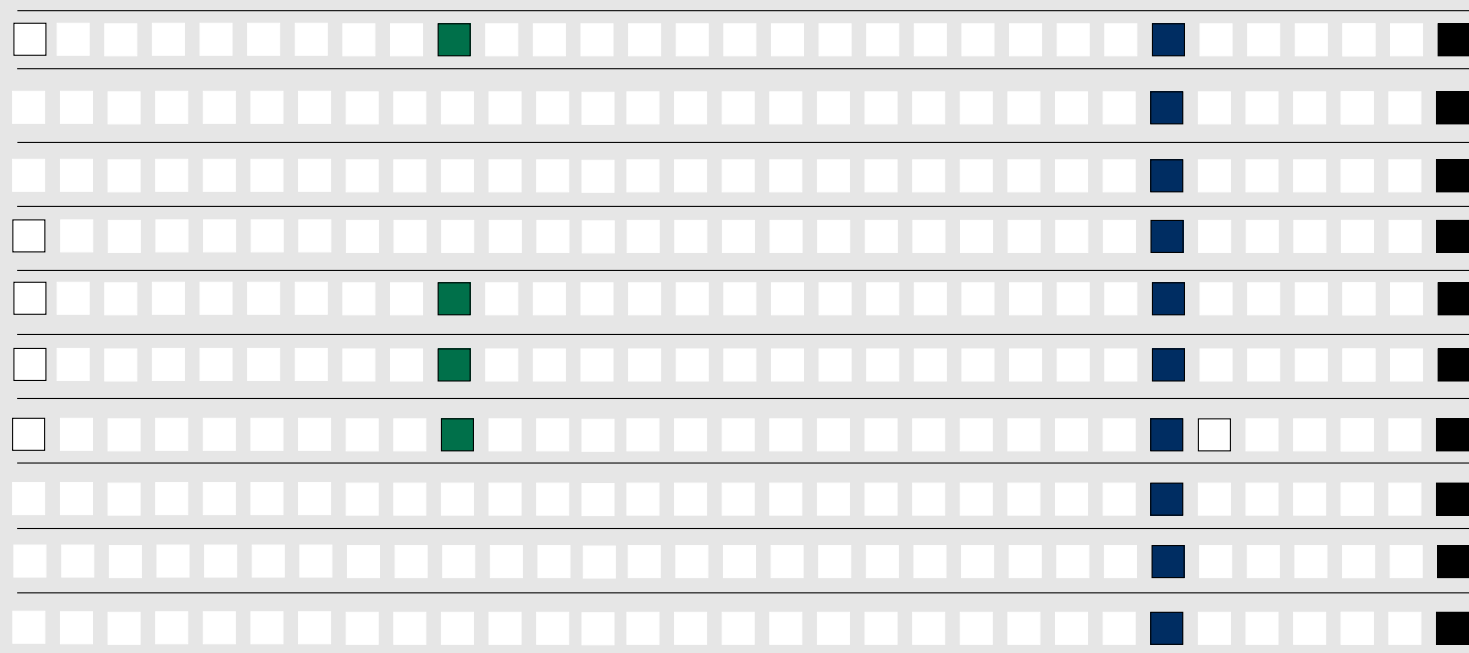
COLOUR OPTIONS AVAILABLE FOR EACH FABRIC

G-Pro Stretch 705																	
G-Fleece 505/550																	
G-Com 705																	
G-Com 505																	
G-Lite 705																	
G-Lite 555																	
G-Lite 505																	
G-WP 805																	
G-WP 755																	
G-Quilt 605																	

PLEASE NOTE:

The colours displayed in this chart may not be an accurate reproduction of the actual fabric colour they represent. This is due to variances between printing and fabric colours. These colours are provided as a guide only





Your kit, your
colours



Clubs and
Schools



Grays

WWW.GRAYS-INT.CO.UK



grays_hockey



grayshockey

FOR FURTHER DETAILS
PLEASE CONTACT YOUR
SALES REPRESENTATIVE
OR CALL

01580 883120

GRAYS HOCKEY

Tel: +44 (0) 1580 880357 Fax: +44 (0) 1580 881156

Email: sales@Graysrugby.com

We reserve the right to change or delete products without prior notice.

Please note: The colour of products in this catalogue have been represented as accurately as possible, but are guided by the limitations of the four-colour printing process.

