

Folding bicycle frame was broken during travel

- Import agency has implemented the collection and free exchange of frame -

"Running at a folding bike, when over a bump, a fall in the folding part is broken, it suffered a wound, such as a face surface bruises. Folding part is I want you to examine the cause of the rupture." Test request that is submitted was subjected to a test products for was, we found that weld strength is insufficient.

Currently, carried out a import agency Co., Ltd. Akibou is the exchange and recovery of frame for the six models, including the products (photo 1) (Tern · Verge X20 · Verge X10 · Verge X30h · Verge S11i · Eclipse X20 · Eclipse S11i) you have. The above models consumer you have a bicycle, please check Co., Ltd. Akibou.

photo1. Appearance of the product



table 1. Main specifications of the product

Product Name	Tern Eclipse X20
Manufacturer	Mobility Holdings, Ltd.
Frame No.	AM1209A1531
Serial tag No.	TARR1007
Country of origin	Taiwan

1. Corresponding operators

Import agency, (see Note 1), including those past import agency imported, we are exchange and recovery of frame for the car model. If you have the appropriate folding bike discontinue use immediately, please contact:.

Import agents: Corporation Akibou e-mail:

info@ternbicycles.jp

Telephone: 0120-557-602 (excluding Saturdays, Sundays and public holidays from 9:00 to 12: 13:00: 00 ~ 17: 00) Shakoku

posted URL: <http://www.ternbicycles.com/jp/node/151611>

It should be noted, including the models, we are the exchange and the recovery for the six models of the following (see P6 ~ 7

References). · Verge X20 · Verge X10 · Verge X30h · Verge S11i · Eclipse X20 · Eclipse S11i

(Note 1) Tern import agency of

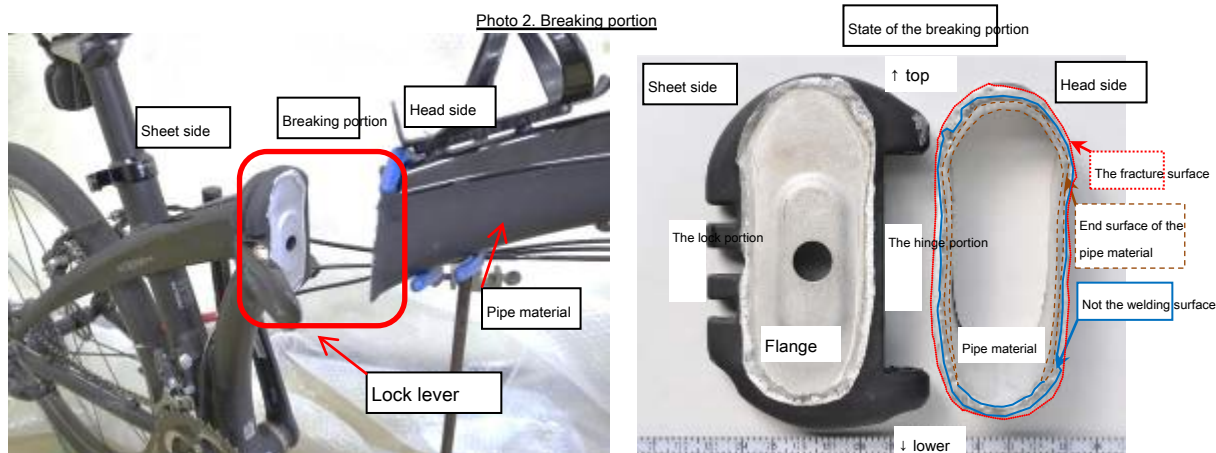
Until July 31, 2013 (with) cycle creation, until August 31, 2014 (Ltd.)

Enubiesu, it has become from September 1, 2014 (the Corporation)

Akibou

2. Investigation of the goods

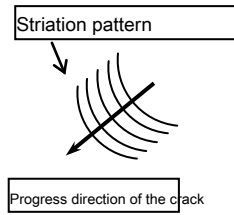
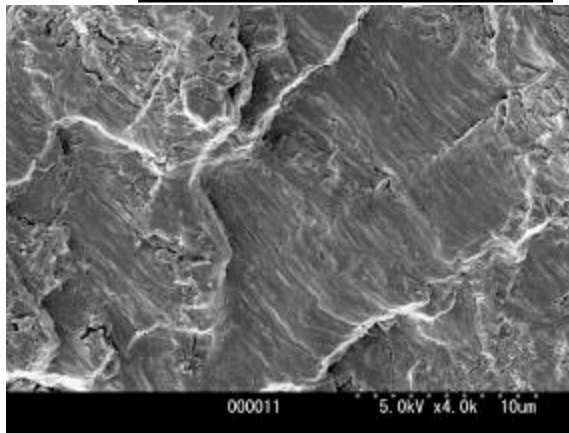
Rupture of the article in the folds of the aluminum frame was thrust Awa was welded portion of the pipe member and the flange (flange) (hereinafter, "sheet side breaks" the sheet side of the rupture portion, a front wheel handle side referred to as "heads side breaks." photo 2). It should be noted, such as deformation in the pipe material was not seen.



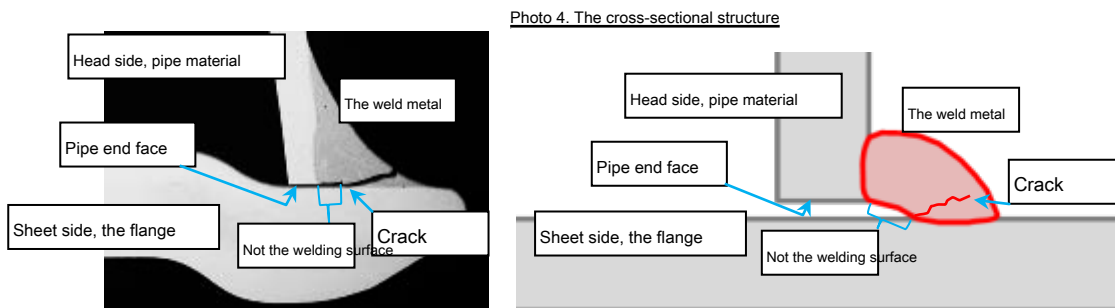
Head side breaks were observed end face of the pipe outside the bottom. Since the fracture surface is observed in the outer periphery of the weld metal, incomplete fusion (the state in which the weld metal and the base metal is not fully melted together) in the weld is considered that there was no, the inner periphery has a non-welded surface, it was considered to have been insufficient welding strength.

Hinge (hinge) side of the crack has been progress from the inside to the outside of the weld, the problem such that the direct cause of the destruction to the welding unit that crack has occurred could not be seen. The lower side of the crack of the broken part had to progress from the hinge side. One of the striations cane down pattern, which is also formed by the repeated stress on the fracture surface was observed (Photo 3), form of destruction was considered to have been a fatigue fracture.

Photo 3. Striation pattern of the fracture surface



In the welding of the hinge side that would crack portion was subjected to cross-sectional structure observation, such as a direct cause of fracture in the weld metal bug but was not seen, the weld has unwelded surfaces, crack had occurred from the end of the non-welded surface (photo 4).



These results, the products have the welding of the pipe and the flange is not appropriate, the previous end of the non-welded surface becomes a starting point, the fatigue crack progressed reduces the bonding area, Setsu withstand load applied to the folded portion It has been considered to have broken without.

3. Harm, danger information of the folding bike

PIO-NET (pioneer Net: the National Consumer information network system) (Note 2) Folding bicycles of harm-risk cases to 97 cases (Note

a) It has been asked. Looking at another year, 27 since the 2010 fiscal year, had been asked 20 near every year (Table 2).

In addition, looking at a different harm content, "abrasions, contusions, bruises" many with 26, followed by "fracture" is at 15 (Table 3), dangerous contents, "damage and breakage" is 46 cases, "part falling off" was the order of 24 (Table 4).

(Note 2) PIO-NET: The (pioneer net national consumer information network system), National Consumer Affairs Center and the National Consumer Sen Signed a coater such as online network, is a database that stores information about the consumer life. (Note 3) acceptance fiscal 2010 and beyond, the registration content of the 2015 end of July. The number is what was special review of the case for the present publication.

Table 2. By year number

2010 FY 2011	FY 2012 FY 2013	FY 2014 FY 2015	FY		7 until the end of the month
27	19	17	19	14	1

Table 3. The main harm content by number

Abrasions, contusions, Of contusions fracture nerve, spinal cord	Damage dislocation, sprains and other	And symptoms
26	15	Five
		Four
		Four

Table 4. The main danger contents of another number

Damaged or broken parts falling off function failure	fall, fall, unstable	Operation and use of Missing
46	twenty four	7
		Four
		3

4. Recall information of bicycle

In addition to the recall of this folding bicycle, than there is a bicycle that recall is issued, please also check the site below.

From the Consumer Agency recall site

Folding bike

<http://www.recall.go.jp/new/detail.php?rci=00000013082>

Bicycle (but see below)

<http://www.recall.go.jp/new/detail.php?rci=00000013064>

Sports bicycle ① (brand from A beginning with K)

<http://www.recall.go.jp/new/detail.php?rci=00000013086>

Sports bicycle ② (brand that starts with Z from L)

<http://www.recall.go.jp/new/detail.php?rci=00000013087>

Motor-assisted bicycle

<http://www.recall.go.jp/new/detail.php?rci=00000013081>

○ Information provision destination

Consumer Agency Consumer Safety Division,

Cabinet Office Consumer Commission Secretariat

Ministry of Economy, Trade and Industry, Commerce and Information

Policy Bureau, Product Safety Division Institute Bicycle Association

This matter Contact

Product test section: 042-758-3165

平成27年5月1日
株式会社アキボウ

2013年モデル 自主回収と交換に関するお詫びとお願い

謹啓

時下ますますご清栄のこととお慶び申し上げます。平素は Tern 社製品をご愛用賜り厚くお礼申し上げます。

この度、2013年モデルとして2012年10月から輸入販売いたしました車両の一部において、不具合があるフレームが混入しており破損するおそれがあることが判明いたしました。このため弊社としましては、予防的措置として当該品だけでなく当時同じ製法にて生産された全車両の自主回収を行うことといたしました。これによりお客様には多大なるご迷惑とご心配をおかけし誠に申し訳ございません。深くお詫び申し上げます。

つきましては、対象車両をご愛用のお客様は直ちにご使用を中止いただきますようお願い申し上げます。また、対象車両の「フレーム回収」と「フレーム無償交換」を実施させていただきたく、何かとご多用のおり大変恐縮に存じますが、ご購入いただいた Tern 販売代理店へお問い合わせくださいますようお願い申し上げます。

お客様へは多大なご負担をおかけし大変申し訳ございませんが下記をご確認いただき、ご対応ご協力賜りますようお願い申し上げます。

謹白

記

〈対象車両〉

2013年モデル 計6車種 (made in Taiwan)

Verge X20 ・ Verge X10 ・ Verge X30h ・ Verge S11i ・

Eclipse X20 ・ Eclipse S11i

〈不具合内容〉

フレームヒンジ部の溶接強度不足により、過度な荷重がかかった場合にフレーム溶接部にクラックが入り、場合によっては破断するおそれがございます。

〈対象車両検索〉

こちらをクリックして検索してください → [「自主回収該当リスト」](#)

〈ご対応のお願い〉

対象車両をお持ちのお客様は、ただちにご使用を中止いただき、ご購入いただいた販売店へ

「自主回収対象」である旨ご連絡いただきますようお願い申し上げます。ご購入いただいた Tern 販売代理店を通じて、随時対象車両の回収と交換を実施させていただきます。状況により、交換までにお時間をいただく場合がございますことご了承願います。

以上

この度の自主回収におきましては、多大なるご迷惑とご心配をおかけし誠に申し訳ございません。ここに深くお詫び申し上げます。

なお、2014年モデル以降生産の本件同型車両につきましては、本件対象車両を生産していた提携先の台湾工場から他社のベトナム工場へ変更されており、またメーカーによる EN 試験だけでなく日本国内におきましても弊社輸入後 JIS 試験を実施いたしております。Tern Bicycles 社ならびに弊社としましては、これら製品に問題がないことを確認しておりますのでご安心してご乗車いただきますようお願い申し上げます。

弊社ならびに Tern Bicycles 社とも今回の件を真摯に受け止め、今後とも製品開発や更なる品質の向上を目指し、お客様からの信頼にお応えできるよう一層努力をしております。何卒末永くご愛顧賜りますようお願い申し上げます。

なお、ご不明な点がございましたらご購入いただいた Tern 販売代理店へお問い合わせください。

Tern Bicycles 日本総代理店 株式会社アキボウ	TEL:0120-557-602 (5月7日より開設)	受付時間 / 平日 9:00~12:00 13:00~17:00 (土・日・祝祭日を除く)
	Mail: info@ternbicycles.jp	