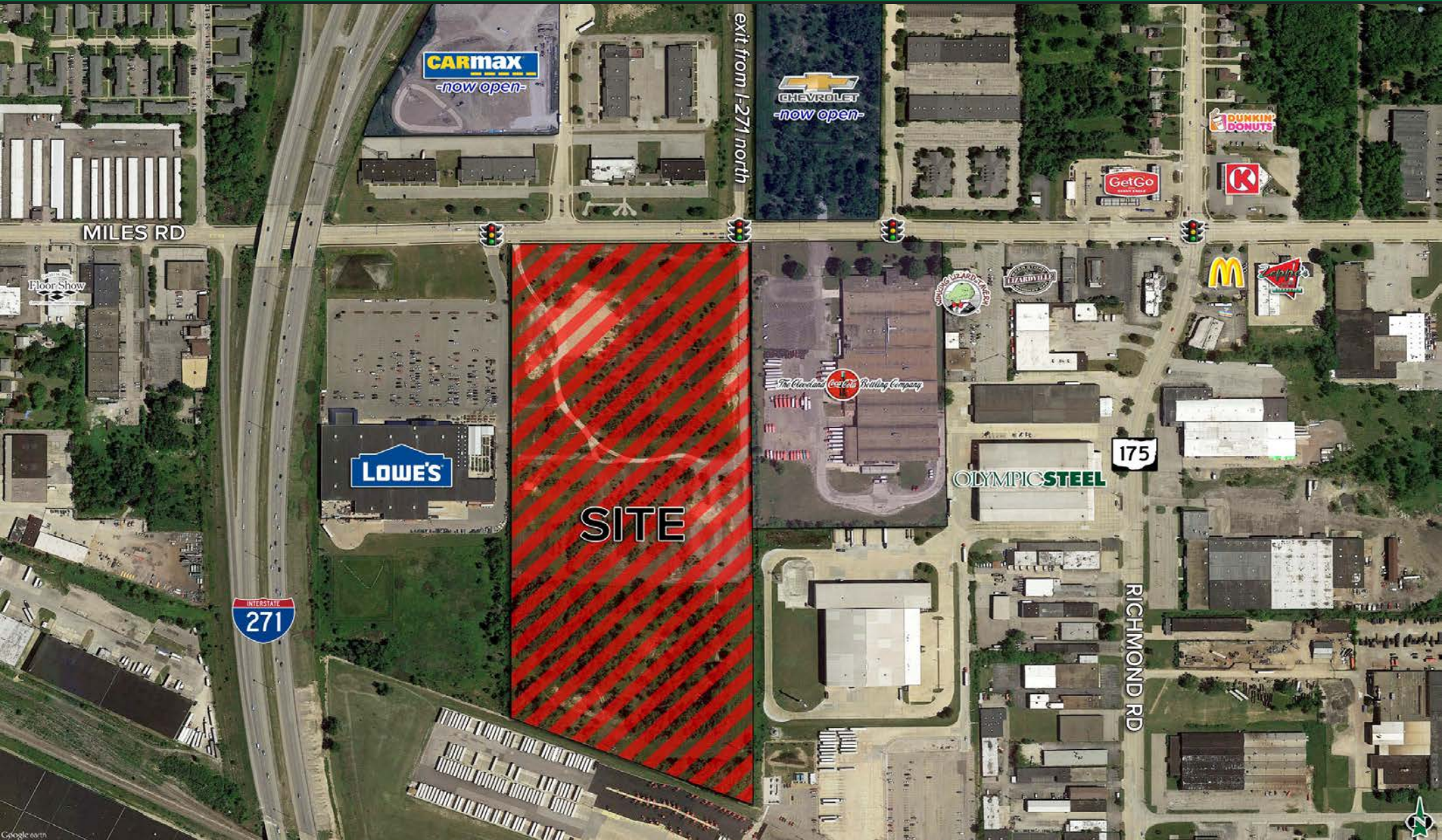


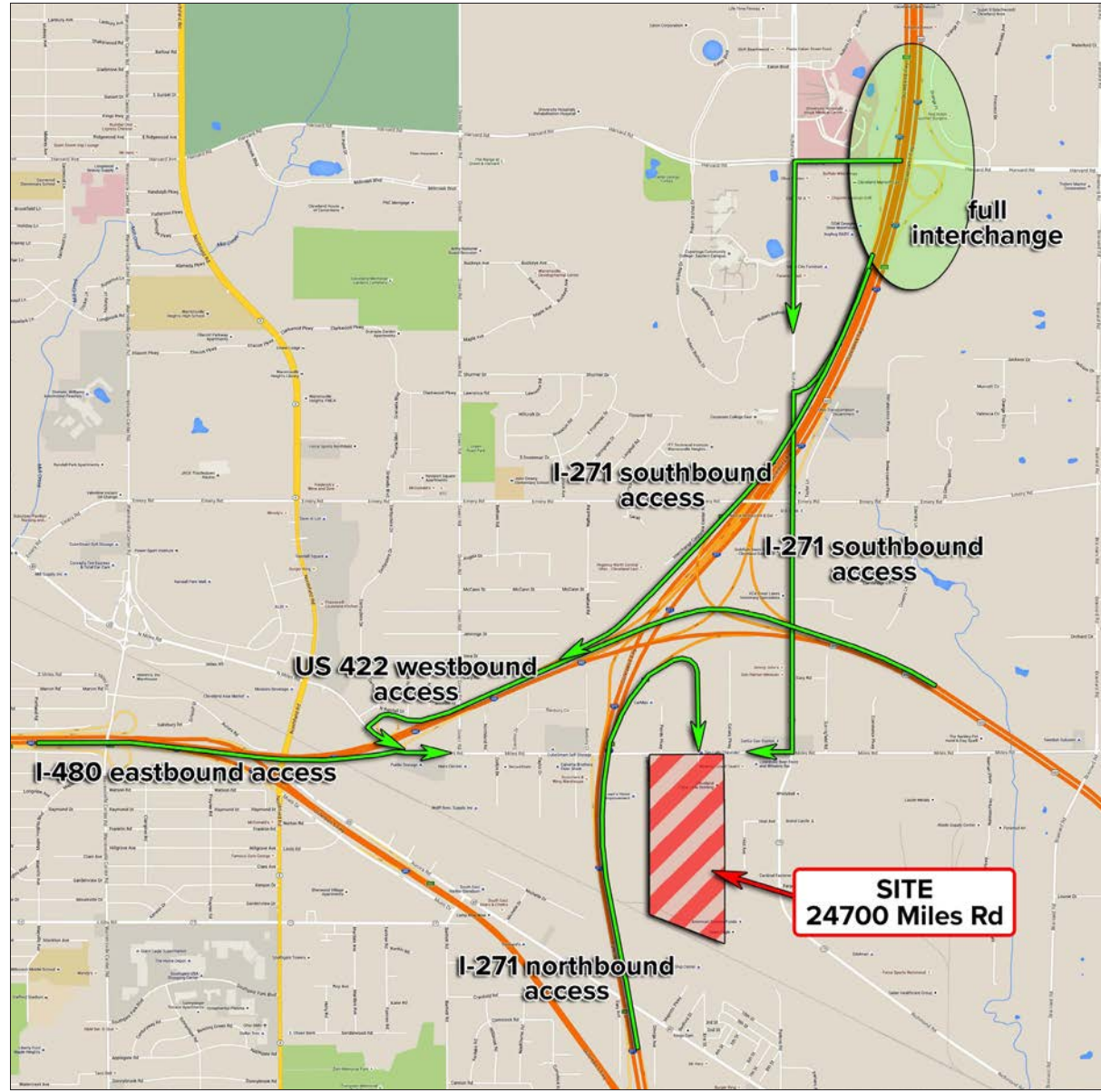
# For Sale - 34.77 Acres of Prime Commercial Land

## 24700 Miles Road, Bedford Hts., OH 44146



# For Sale - 34.77 Acres of Prime Commercial Land

## 24700 Miles Road, Bedford Hts., OH 44146

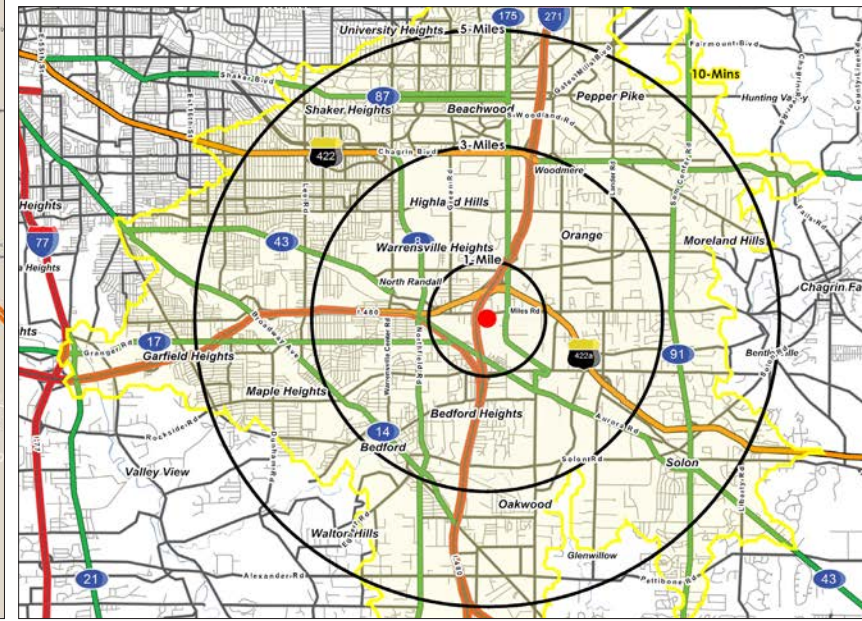


### PROPERTY OVERVIEW

- 810' of frontage on Miles Road
- Zoning permits Retail or Industrial
- Freeway visibility to I-271
- Great access via I-271 and I-480

### DEMOGRAPHIC SNAPSHOT (2010 Census; 2015 Estimate)

	1 Mile	3 Miles	5 Miles	10 Min
Population	8,523	56,886	165,510	226,657
Average HH Income	\$41,738	\$57,767	\$76,192	\$75,393
Median HH Income	\$33,836	\$46,274	\$57,832	\$57,174



# For Sale - 34.77 Acres of Prime Commercial Land

## 24700 Miles Road, Bedford Hts., OH 44146

