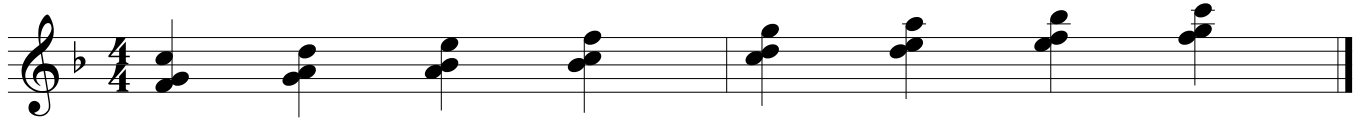


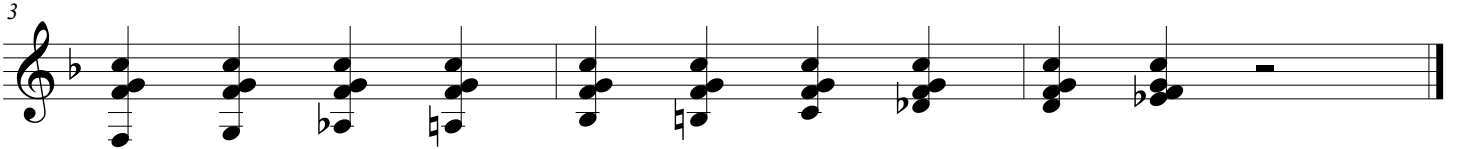
# estructuras intervalicas 1

Tom Kessler

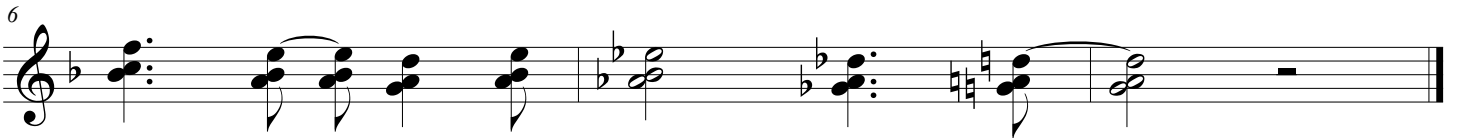
2-4



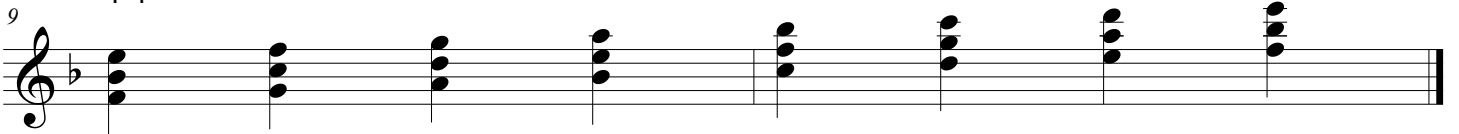
F sus2 G sus4 Ab Maj13 A m b6 B b add9 B 7 alt C sus4 Db Maj7(#11) D m11 Eb<sup>6</sup>



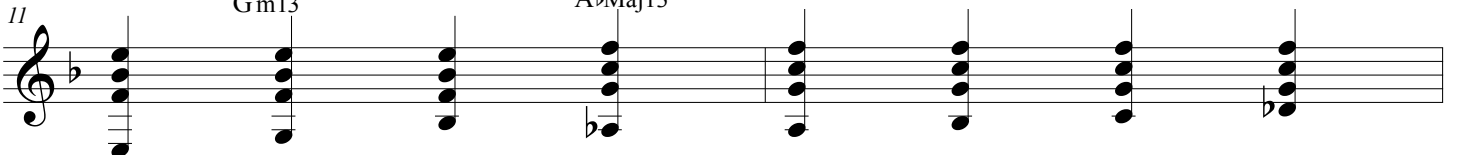
G m7 C7(al) F<sup>6</sup>



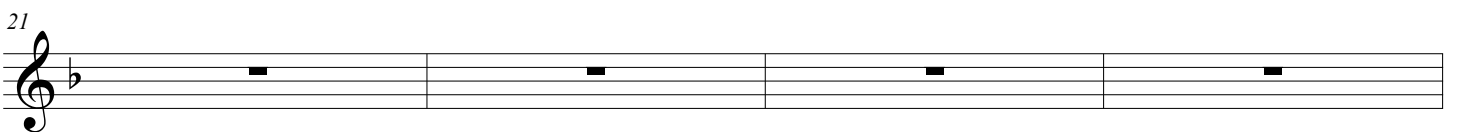
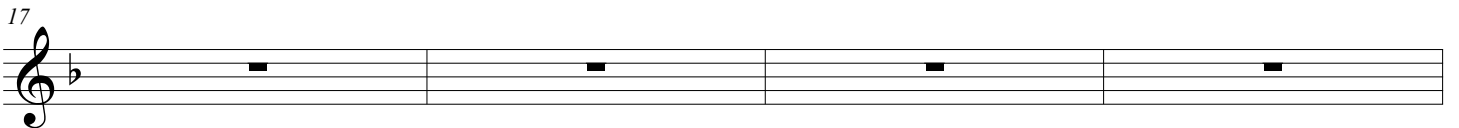
4-4



E7(b9b5) Bb Maj7(#11) Ab Maj13 A m b6 Bb<sup>6</sup> C sus4 Db Maj7(#11)



D m11 Eb<sup>6</sup> F sus2 G7 sus4 G m7 C7 F<sup>6</sup>



25

A musical staff with a treble clef and a flat key signature. A single note is placed on the second line of the staff. The staff ends with a double bar line.