



Search



Eye Color Guide - The Most Common Eye Colors

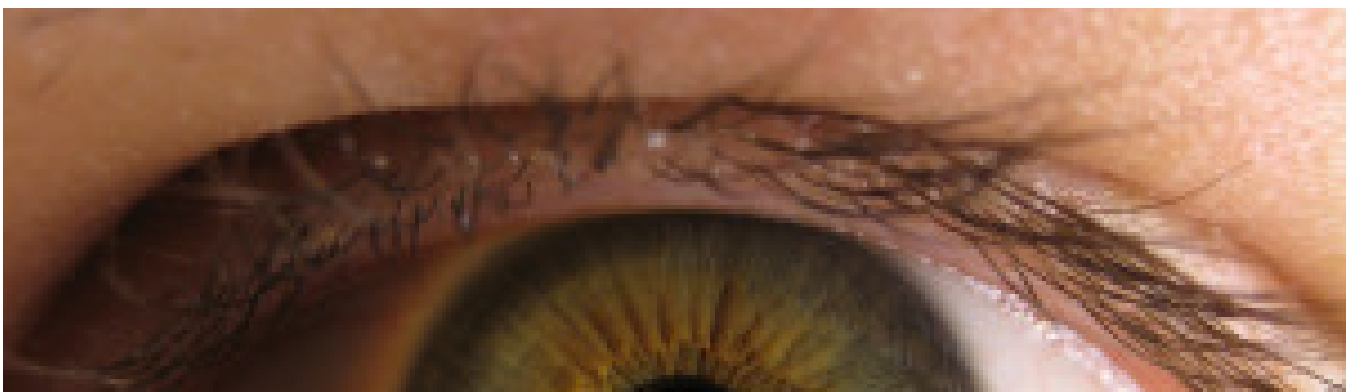
The human eye is both beautiful and unique. Much like a fingerprint, each individual's eye color is specific only to them, with no others sharing the same shape, color and appearance. So what eye colors are the most common, and which are the rarest?

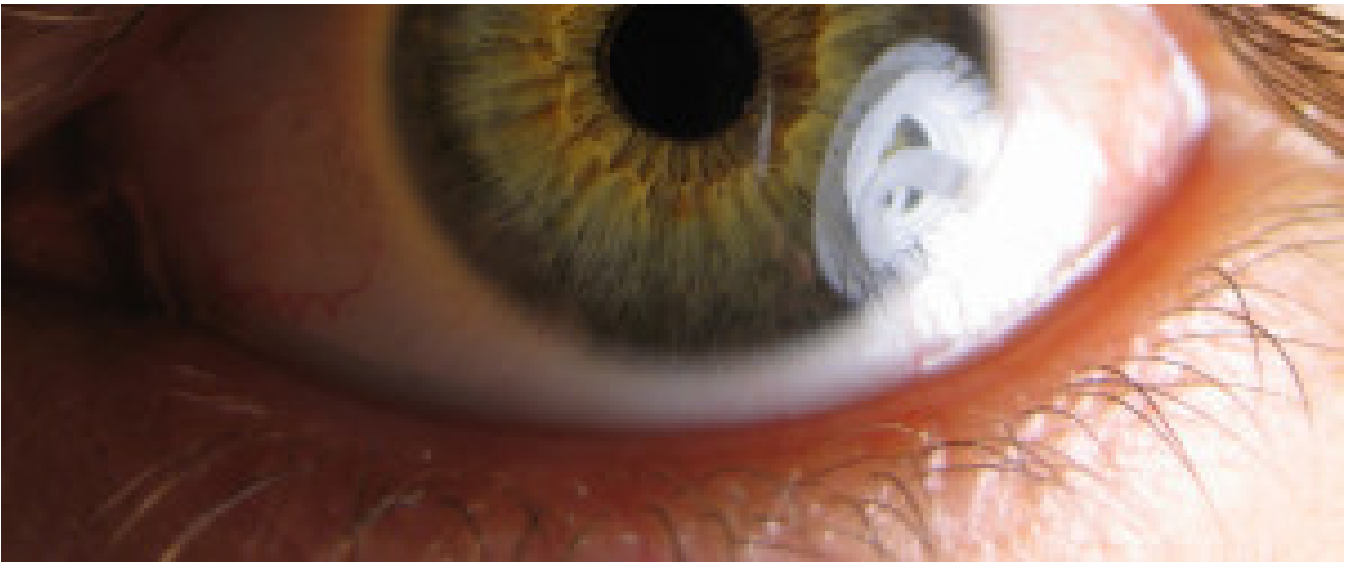
W h a t i s t h e m o s t c o m m o n e y e c o l o r ? W h i c h



Brown Eyes

Brown eyes are the most common eye color in the world with over 55% of the world's population having brown eyes. Brown eye color is a dominant genetic trait, and is created by the presence of melanin in the eye. Over fifty percent of the world's population has brown eyes, with nearly all individuals from Africa and Asia sharing brown eye color. Brown eyes are typically darker than other eye colors, and they may even appear black in certain individuals.





Hazel Eyes

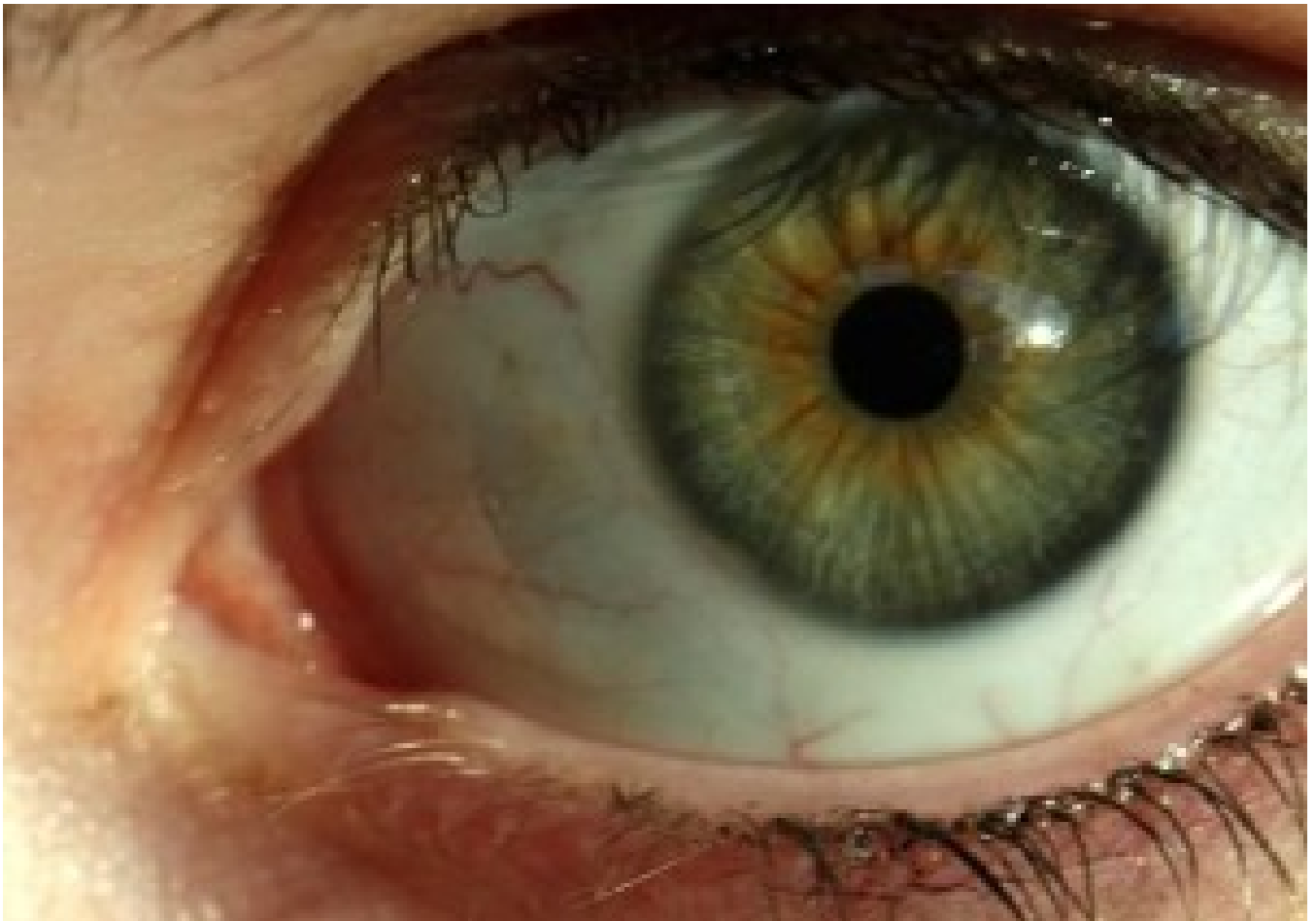
Hazel eyes are similar to brown eyes, although they are typically lighter in color, and have more of a green-yellow tint. Hazel eyes have a higher concentration of melanin (pigment) around the eye's border, which can result in a multi-colored appearance that varies between copper and green depending on the lighting. Most people estimate that around 5-8% of the world's population has hazel colored eyes.



Blue Eyes

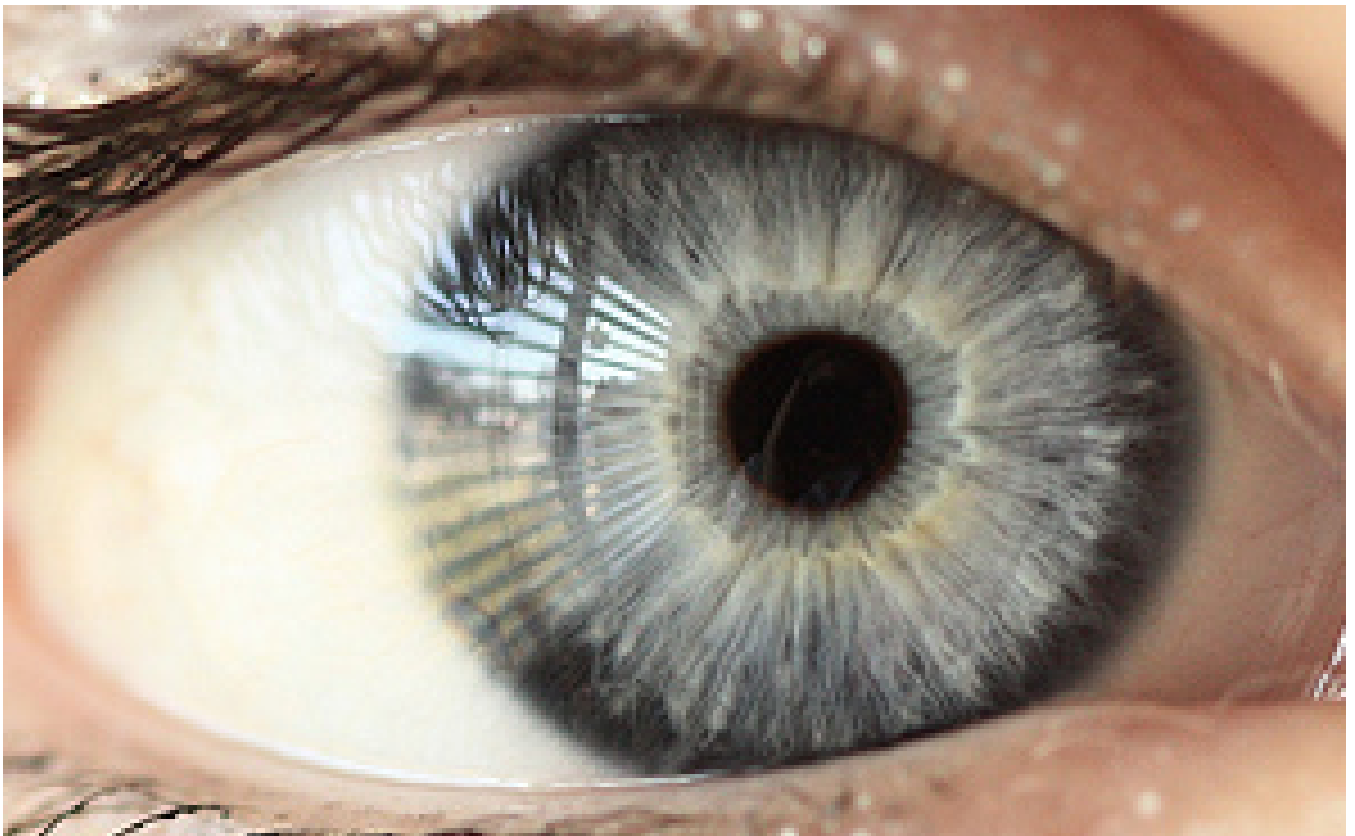
Blue eyes are genetically recessive, and therefore much less common worldwide. Blue eyes are formed by the absence of pigments in the eye, where the blue color is formed by the scattering of light as it's reflected off the iris. While blue eyes are less common than brown eyes, they are frequently found from nationalities located near the Baltic sea in northern Europe. It's estimated that approximately 8% of the world's population has blue eyes.





Green Eyes

Green eye color is often confused with hazel eye color, yet is entirely separate and distinct. Green eye color is the rarest color found around the world, and it is estimated that only around 2% of the world's population has green colored eyes. Green eye color is a result of a mild amount of pigmentation in the eye with a golden tint. When combined with the natural blue scattering of the eye, the colors mix to give a green appearance. Green eye color is most common in northern and central Europe, but can also be found in western Asian cultures on rare occasion.





Silver Eyes

Silver eye color is also quite rare, although many consider silver eyes to be a variation of blue eye color. Like blue eyes, silver eyes are the result of a very low amount of pigmentation in the eye, which reflects a gray-silver appearance. Silver eye color is most common in eastern European countries, and is one of the rarer eye colors worldwide.



Amber Eyes

Amber eyes show off a yellow-copper tone, which results from the yellow colored pigment lipochrome. Amber eyes are very rare worldwide, and are most common in Asia and South American countries. Amber eye color can range from golden yellow to a more copper tone.

If there is one thing we can agree on, it's that all eyes are unique and beautiful. Additionally, thanks to [colored contact lenses](#), it's possible to change your eye color even if you were born with a common brown.

Also, make sure to check out our [Freshlook Contact Lenses](#), which are the most popular, and most widely recommended colored contact lens available.

Never miss a sale!

SIGN UP



Need Help?

Contact Us

Customer Support

[Customer Service](#)

[Shipping](#)

[Returns](#)

Corporate Information

[Our Story](#)

[Terms of Service](#)

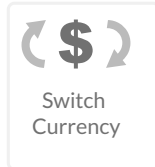
[Privacy Policy](#)

[HIPAA Notification](#)

[Affiliate Program](#)

[Accessibility Statement](#)

[Sitemap](#)



[ABOUT SSL CERTIFICATES](#)

