



## Daylight Harvesting

### **Definition / Meaning of Daylight Harvesting**

An Energy Management Technique that Reduces Overhead Lighting based on available ambient light is called **Daylight Harvesting**. It utilizes the ambient (Artificial and Natural) light present in a specified area for conservation of energy. When sufficient ambient light is present or when the space is unoccupied, it automatically dims or switches off overhead lighting.



We offer a wide range of Advanced **Daylight Harvesting** Solution. Norikool - ADS is an Advanced Day lighting Solution for Industries & Buildings. Sky shade for first time in India Introducing this Advanced Day lighting System that can replace Strip/Roof lights in Industries. Norikool ADS can effectively replace profile translucent, Strip/Roof lights in industries. Unlike profiled translucent sheets, these systems are easy to fix and maintain, very less heat transfer, better transmission & distribution of light.

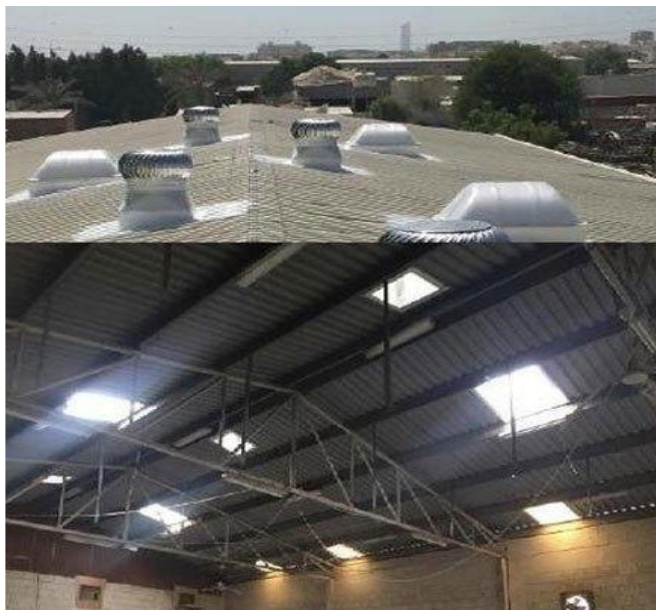
#### Unique Features:

- Clear bright transmission
- Light without heat & hot spot
- Captures low angle sunlight
- Wide Distribution of light
- Consumes < 20% of roof area
- Increases LEED rating credits.



### **Light Pipe Day lighting System**

Solar Lighting System has a light collector, light transfer pipe and light diffuser assembly. The entire system can deliver light into building spaces for length of 15 meters. To successfully daylight a space, the day lighting system should optimize sunlight collection to given climatic region. Sunlight collection system designed for certain regions are not effective for other climatic regions.



### **Advantages of Light Pipe**

Light capture is high at low sun angles i.e. Before 9 am and after 3 pm.

Extended day lighting hours

No heat up build

Uniform light dispersion

Daylight can reach false ceiling covered areas.

**For More Information Please Contact us: - +91-253- 6614302 / 9923796228**

**Visit Us:** <http://www.greenmagic.co.in/daylight-harvesting-solutions-norikool.php>