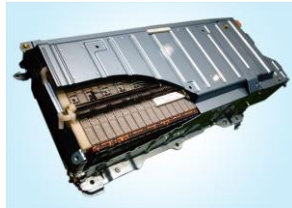
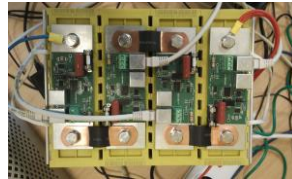


# OP Kortrijk: progress report

## Stationary battery pack: 3 options



Stationary  
battery



- **Battery pack with management system**
  - Developed by KU Leuven (part of LBATTS)
  - 16 cells of about 5 kWh in total
  - High precision voltage measurement < 1mV
  - CAN-bus communication between cells
  - Full remote control and data acquisition through flask server
- **Possibilities of second life from EV car battery**
  - Availability of plug-in hybrid EV battery pack
  - 96 prismatic Sanyo cells of 8.8 kWh total
  - Transition to stationary battery pack under development
- **VAB EV-Poly**
  - Mobile EV charging system developed in KU Leuven for VAB breakdown assistance service for EV
  - Storage capacity of 18 kWh (Lithium) & a rapeseed generator set of 16 kW

