



Real Microsoft 70-411 Dumps

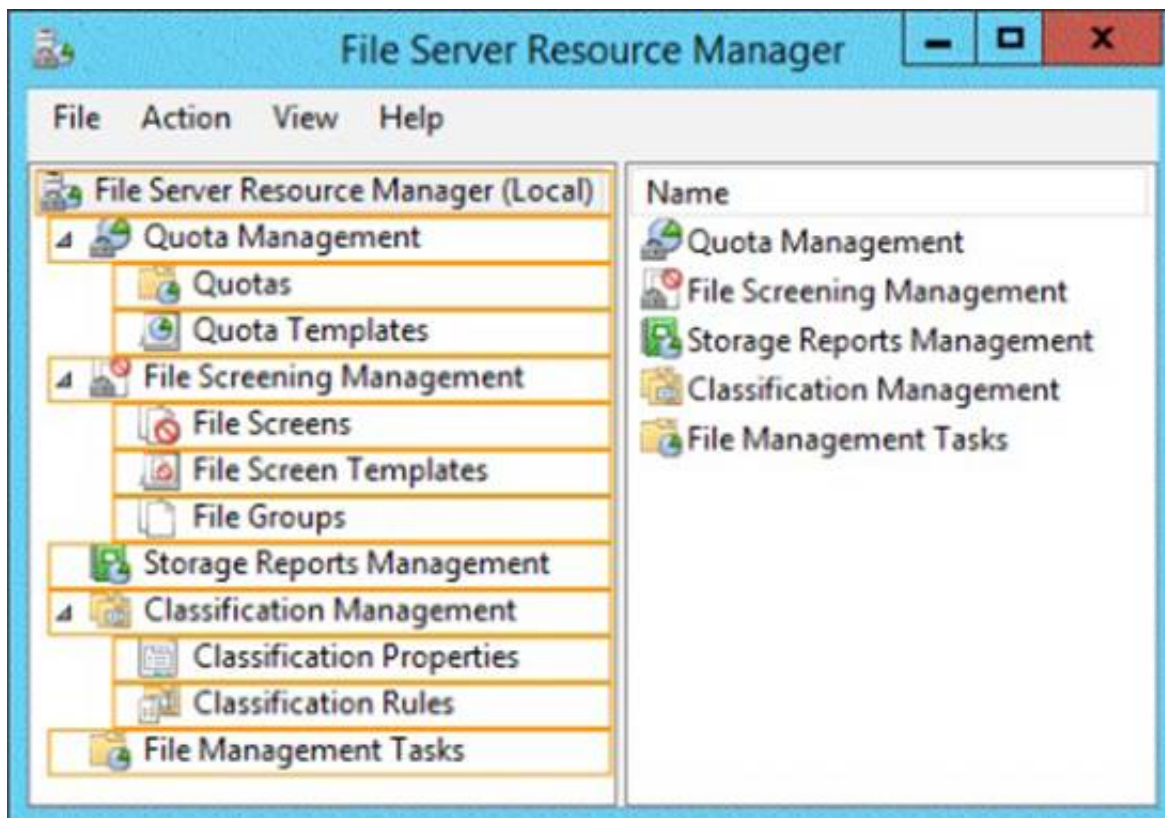
1.HOTSPOT

Your network contains an Active Directory domain named contoso.com. The domain contains a server named Server1 that runs Windows Server 2012 R2. Server1 has the File Server Resource Manager role service installed.

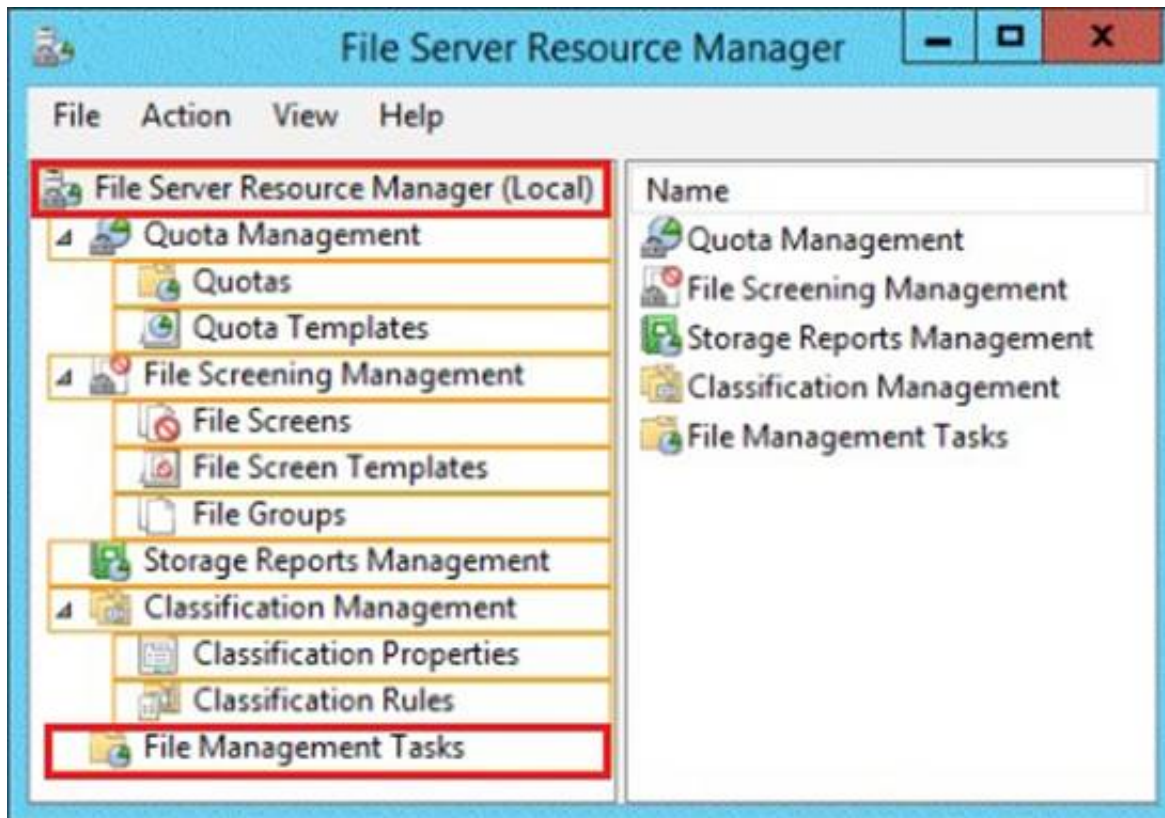
You need to configure Server1 to meet the following requirements:

- Ensure that old files in a folder named Folder1 are archived automatically to a folder named Archive1.
- Ensure that all storage reports are saved to a network share.

Which two nodes should you configure? To answer, select the appropriate two nodes in the answer area.

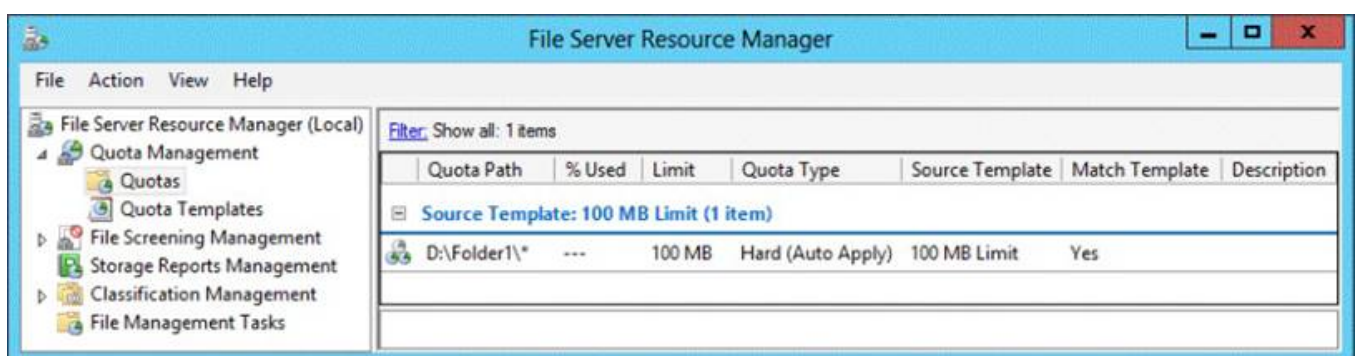


Answer:

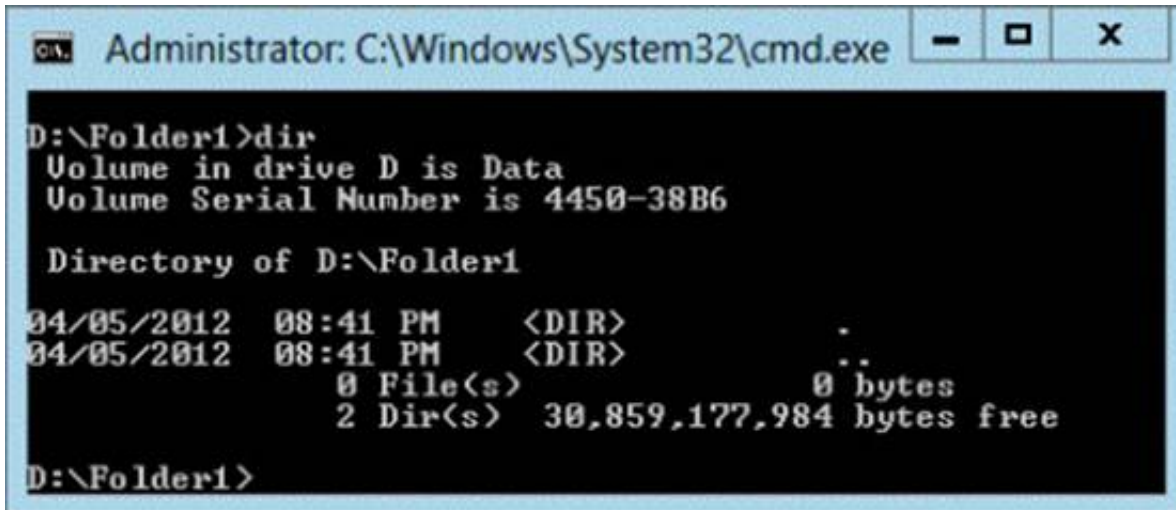


2. You have a server named Server1 that runs Windows Server 2012 R2.

An administrator creates a quota as shown in the Quota exhibit. (Click the Exhibit button.)



You run the dir command as shown in the Dir exhibit. (Click the Exhibit button.)



```
Administrator: C:\Windows\System32\cmd.exe
D:\Folder1>dir
Volume in drive D is Data
Volume Serial Number is 4450-38B6

Directory of D:\Folder1

04/05/2012  08:41 PM    <DIR>
04/05/2012  08:41 PM    <DIR>
            0 File(s)                0 bytes
            2 Dir(s)  30,859,177,984 bytes free

D:\Folder1>
```

You need to ensure that D:\Folder1 can only consume 100 MB of disk space.

What should you do?

- A. From File Server Resource Manager, create a new quota.
- B. From File Server Resource Manager, edit the existing quota.
- C. From the Services console, set the Startup Type of the Optimize drives service to Automatic.
- D. From the properties of drive D, enable quota management.

Answer: A

3. Your network contains an Active Directory domain named contoso.com. All user accounts reside in an organizational unit (OU) named OU1. You create a Group Policy object (GPO) named GPO1. You link GPO1 to OU1. You configure the Group Policy preference of GPO1 to add a shortcut named Link1 to the desktop of each user. You discover that when a user deletes Link1, the shortcut is removed permanently from the desktop. You need to ensure that if a user deletes Link1, the shortcut is added to the desktop again.

What should you do?

- A. Enforce GPO1.
- B. Modify the Link1 shortcut preference of GPO1.
- C. Enable loopback processing in GPO1.

D. Modify the Security Filtering settings of GPO1.

Answer: B

4. You have Windows Server 2012 R2 installation media that contains a file named Install.wim. You need to identify the permissions of the mounted images in Install.wim.

What should you do?

A. Run `dism.exe` and specify the `/get-mountedwiminfo` parameter.

B. Run `imagex.exe` and specify the `/verify` parameter.

C. Run `imagex.exe` and specify the `/ref` parameter.

D. Run `dism.exe` and specify the `/get-imageinfo` parameter.

Answer: A

5. Your network contains an Active Directory domain named `contoso.com`. The domain contains a server named `Server1` that runs Windows Server 2012 R2.

A local account named `Admin1` is a member of the Administrators group on `Server1`.

You need to generate an audit event whenever `Admin1` is denied access to a file or folder.

What should you run?

A. `auditpol.exe /set /user:admin1 /failure:enable`

B. `auditpol.exe /set /user:admin1 /category:"detailed tracking" /failure:enable`

C. `auditpol.exe /resourcesacl /set /type:file /user:admin1 /failure`

D. `auditpol.exe /resourcesacl /set /type:key /user:admin1 /failure /access:ga`

Answer: C

6. Your network contains four Network Policy Server (NPS) servers named `Server1`, `Server2`, `Server3`, and `Server4`. `Server1` is configured

as a RADIUS proxy that forwards connection requests to a remote RADIUS server group named Group1. You need to ensure that Server2 and Server3 receive connection requests. Server4 must only receive connection requests if both Server2 and Server3 are unavailable.

How should you configure Group1?

- A. Change the Weight of Server4 to 10.
- B. Change the Weight of Server2 and Server3 to 10.
- C. Change the Priority of Server2 and Server3 to 10.
- D. Change the Priority of Server4 to 10.

Answer: D

7. Your network contains an Active Directory domain named contoso.com. All domain controllers run Windows Server 2012 R2. The domain contains 500 client computers that run Windows 8 Enterprise. You implement a Group Policy central store. You have an application named App1. App1 requires that a custom registry setting be deployed to all of the computers.

You need to deploy the custom registry setting. The solution must minimize administrator effort.

What should you configure in a Group Policy object (GPO)?

- A. The Software Installation settings
- B. The Administrative Templates
- C. An application control policy
- D. The Group Policy preferences

Answer: D

8. DRAG DROP

Your network contains an Active Directory forest named contoso.com. All domain controllers run Windows Server 2008 R2. The schema is upgraded to Windows Server 2012 R2. Contoso.com contains two servers.

The servers are configured as shown in the following table.

Server name	Operating system	Role
Server1	Windows Server 2012 R2	Web Server (IIS) server role Network Load Balancing (NLB) feature
Server2	Windows Server 2012 R2	Web Server (IIS) server role Network Load Balancing (NLB) feature

Server1 and Server2 host a load-balanced application pool named AppPool1.

You need to ensure that AppPool1 uses a group Managed Service Account as its identity.

Which three actions should you perform? To answer, move the three appropriate actions from the list of actions to the answer area and arrange them in the correct order.

Actions	Answer Area
Run the Install-ADServiceAccount cmdlet.	
Modify the settings of AppPool1.	
Run the New-ADServiceAccount cmdlet.	
Install a domain controller that runs Windows Server 2012 R2.	
Run the Set-ADServiceAccount cmdlet.	

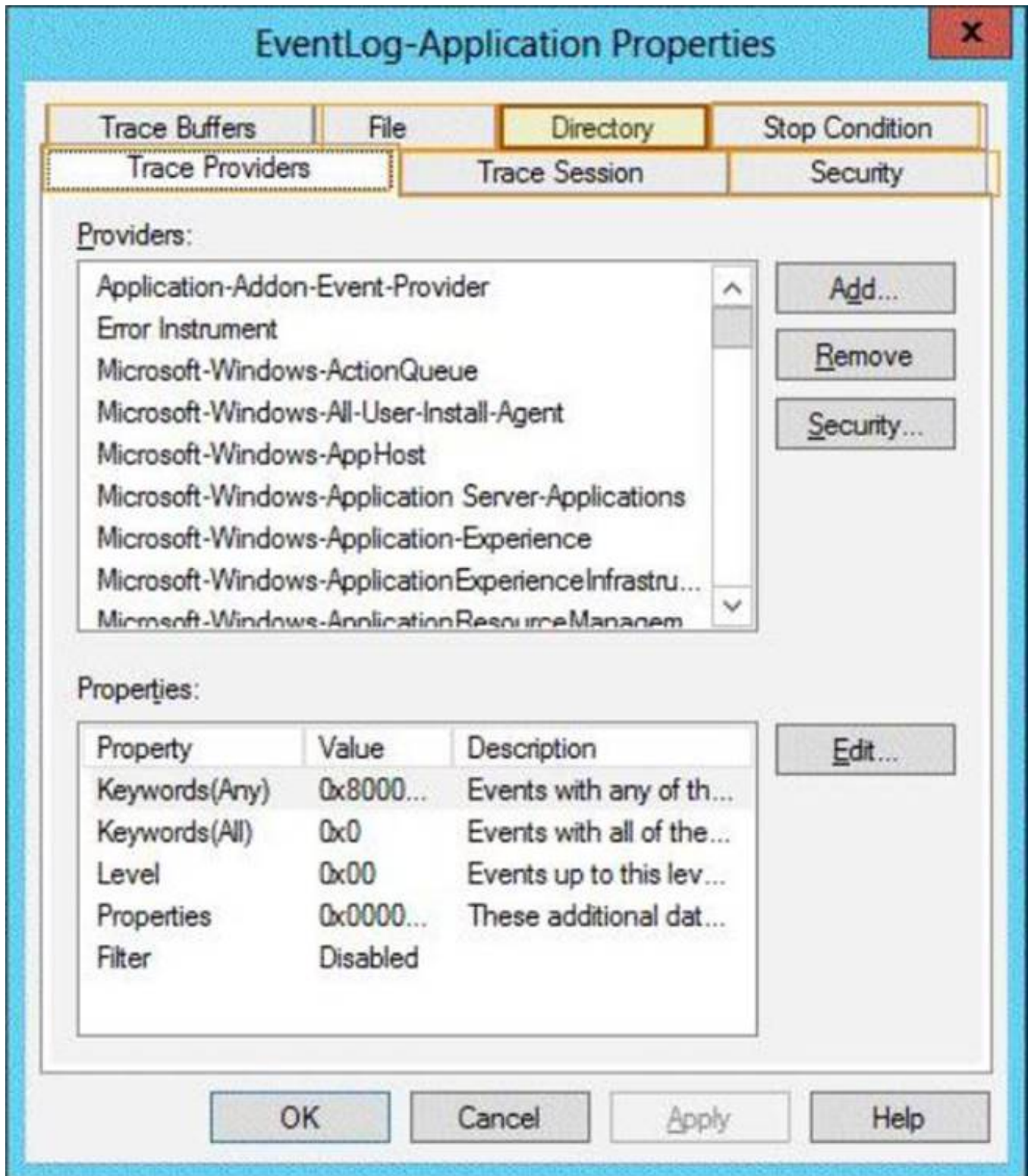
Answer:

Actions	Answer Area
Run the Install-ADServiceAccount cmdlet.	Install a domain controller that runs Windows Server 2012 R2.
Run the Set-ADServiceAccount cmdlet.	Run the New-ADServiceAccount cmdlet.
	Modify the settings of AppPool1.

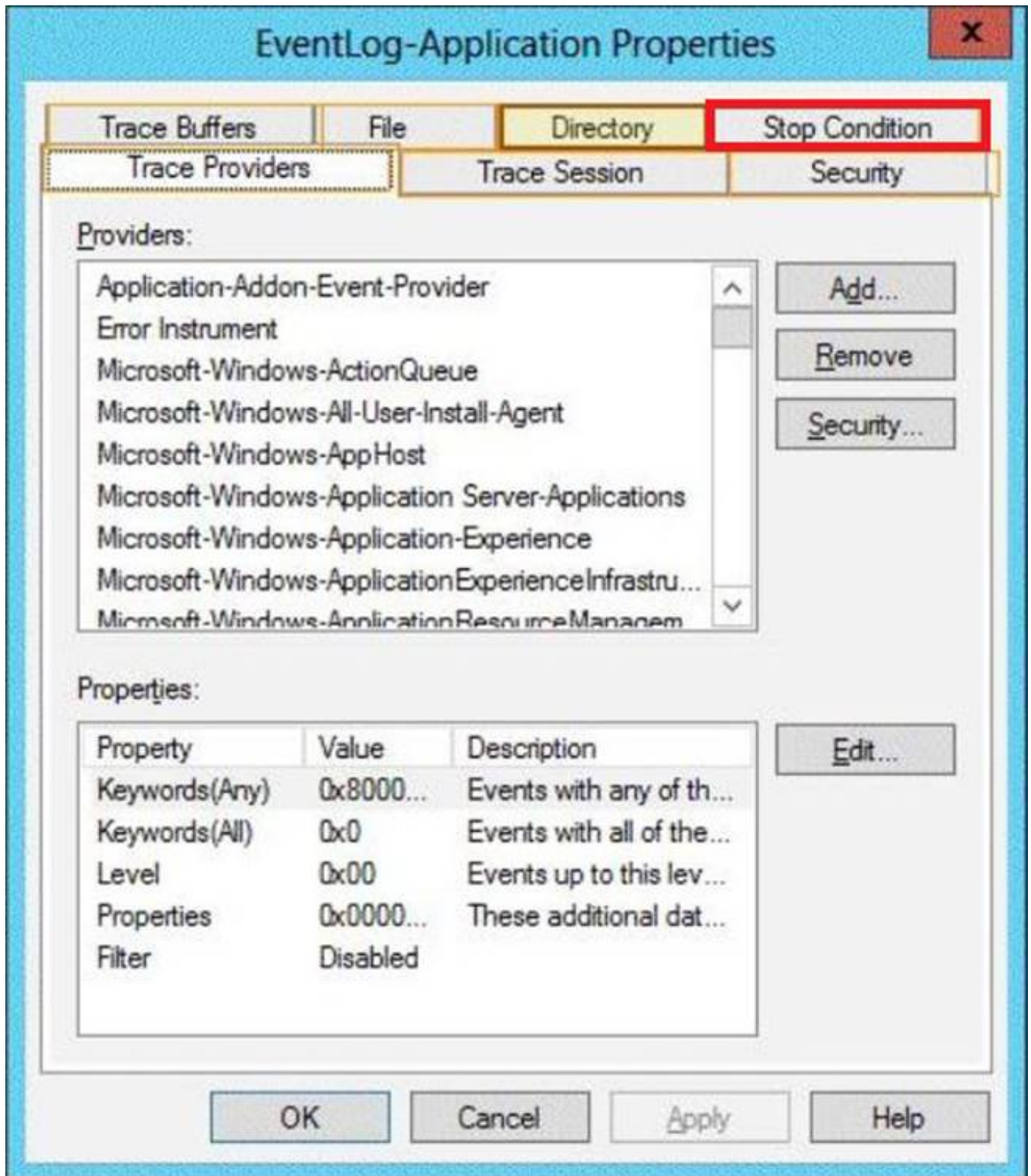
9.HOTSPOT

Your network contains an Active Directory domain named contoso.com. The domain contains a member server named Server1. Server1 runs Windows Server 2012 R2. You enable the EventLog-Application event trace session. You need to set the maximum size of the log file used by the trace session to 10 MB.

From which tab should you perform the configuration? To answer, select the appropriate tab in the answer area.



Answer:



10. Your network contains an Active Directory domain named contoso.com. The domain contains a domain controller named DC1

that runs Windows Server 2012 R2. You create an Active Directory snapshot of DC1 each day. You need to view the contents of an Active Directory snapshot from two days ago.

What should you do first?

- A. Run the dsamain.exe command.
- B. Stop the Active Directory Domain Services (AD DS) service.
- C. Start the Volume Shadow Copy Service (VSS).
- D. Run the ntdsutil.exe command.

Answer: A

11. Your network contains two Active Directory forests named contoso.com and dev.contoso.com. The contoso.com forest contains a domain controller named DC1. The dev.contoso.com forest contains a domain controller named DC2. Each domain contains an organizational unit (OU) named OU1.

Dev.contoso.com has a Group Policy object (GPO) named GPO1. GPO1 contains 200 settings, including several settings that have network paths. GPO1 is linked to OU1.

You need to copy GPO1 from dev.contoso.com to contoso.com.

What should you do first on DC2?

- A. From the Group Policy Management console, right-click GPO1 and select Copy.
- B. Run the mtedit.exe command and specify the /Domain:contoso.com /DC: DC 1 parameter.
- C. Run the Save-NetGpocmdlet.
- D. Run the Backup-Gpocmdlet.

Answer: A

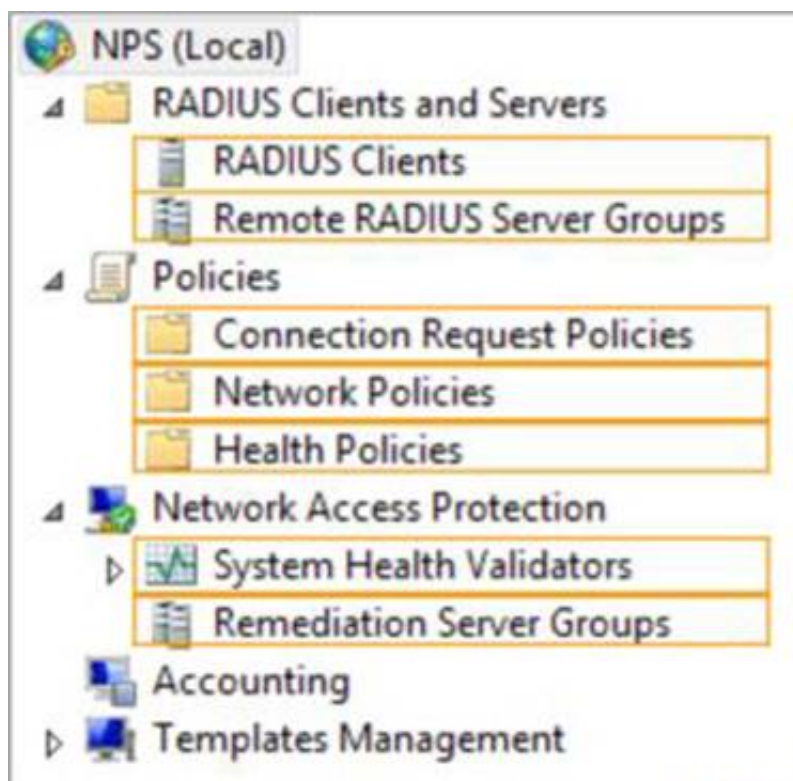
12.HOTSPOT

Your network contains a RADIUS server named Server1. You install a new server named Server2 that runs Windows Server 2012 R2 and has Network Policy Server (NPS) installed.

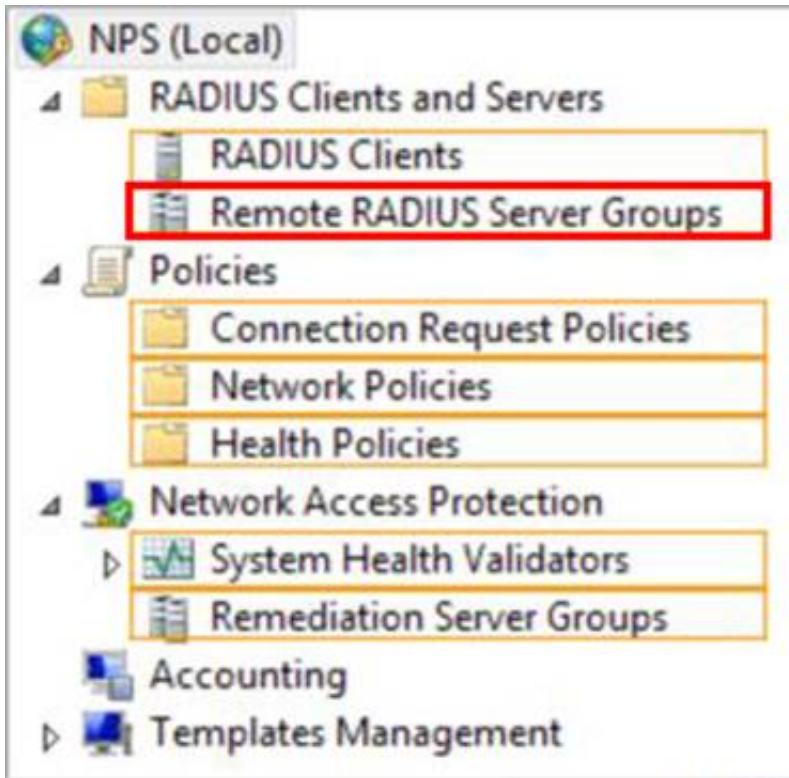
You need to ensure that all accounting requests for Server2 are forwarded to Server1.

On Server2, you configure a Connection Request Policy.

What else should you configure on Server2? To answer, select the appropriate node in the answer area.



Answer:



13. Your network contains an Active Directory domain named contoso.com. The Active Directory Recycle bin is enabled for contoso.com. A support technician accidentally deletes a user account named User1. You need to restore the User1 account.

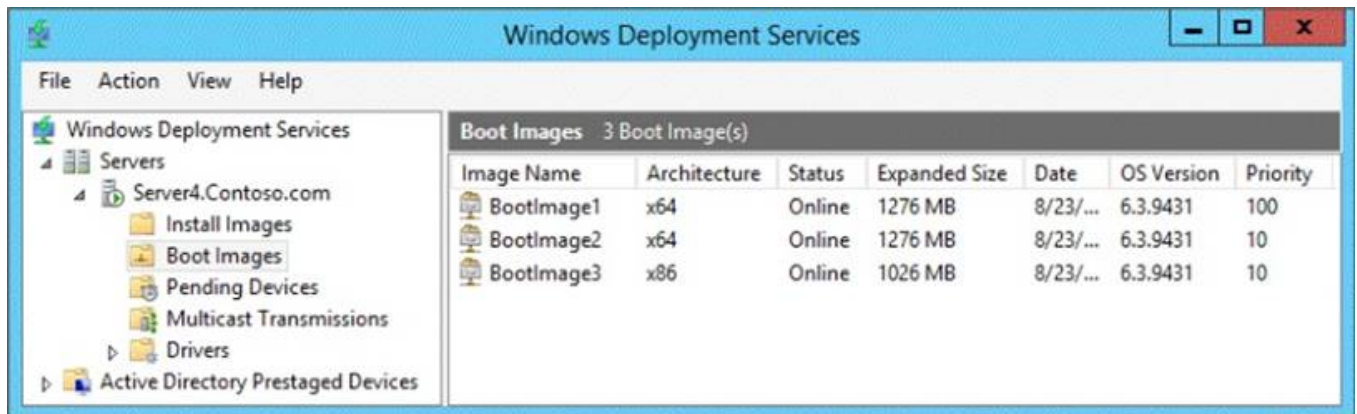
Which tool should you use?

- A. Ldp
- B. Esentutl
- C. Active Directory Administrative Center
- D. Ntdsutil

Answer: C

14. HOTSPOT

You have a server named Server4 that runs Windows Server 2012 R2. Server4 has the Windows Deployment Services server role installed. Server4 is configured as shown in the exhibit. (Click the Exhibit button.)



To answer, complete each statement according to the information presented in the exhibit. Each correct selection is worth one point.

Answer Area

When you connect to Windows Deployment Services (WDS) from an x64 client computer, you can select ...

When you connect to Windows Deployment Services (WDS) from an x64 client computer, the default image will be ...

Answer Area

When you connect to Windows Deployment Services (WDS) from an x64 client computer, you can select ...

BootImage3 only.
BootImage1 and BootImage2 only.
BootImage2 and BootImage3 only.
BootImage1, BootImage2, and BootImage3

When you connect to Windows Deployment Services (WDS) from an x64 client computer, the default image will be ...

BootImage1.
BootImage2.
BootImage3.

Answer:

Answer Area

When you connect to Windows Deployment Services (WDS) from an x64 client computer, you can select ...

- BootImage3 only.
- BootImage1 and BootImage2 only.
- BootImage2 and BootImage3 only.
- BootImage1, BootImage2, and BootImage3**

When you connect to Windows Deployment Services (WDS) from an x64 client computer, the default image will be ...

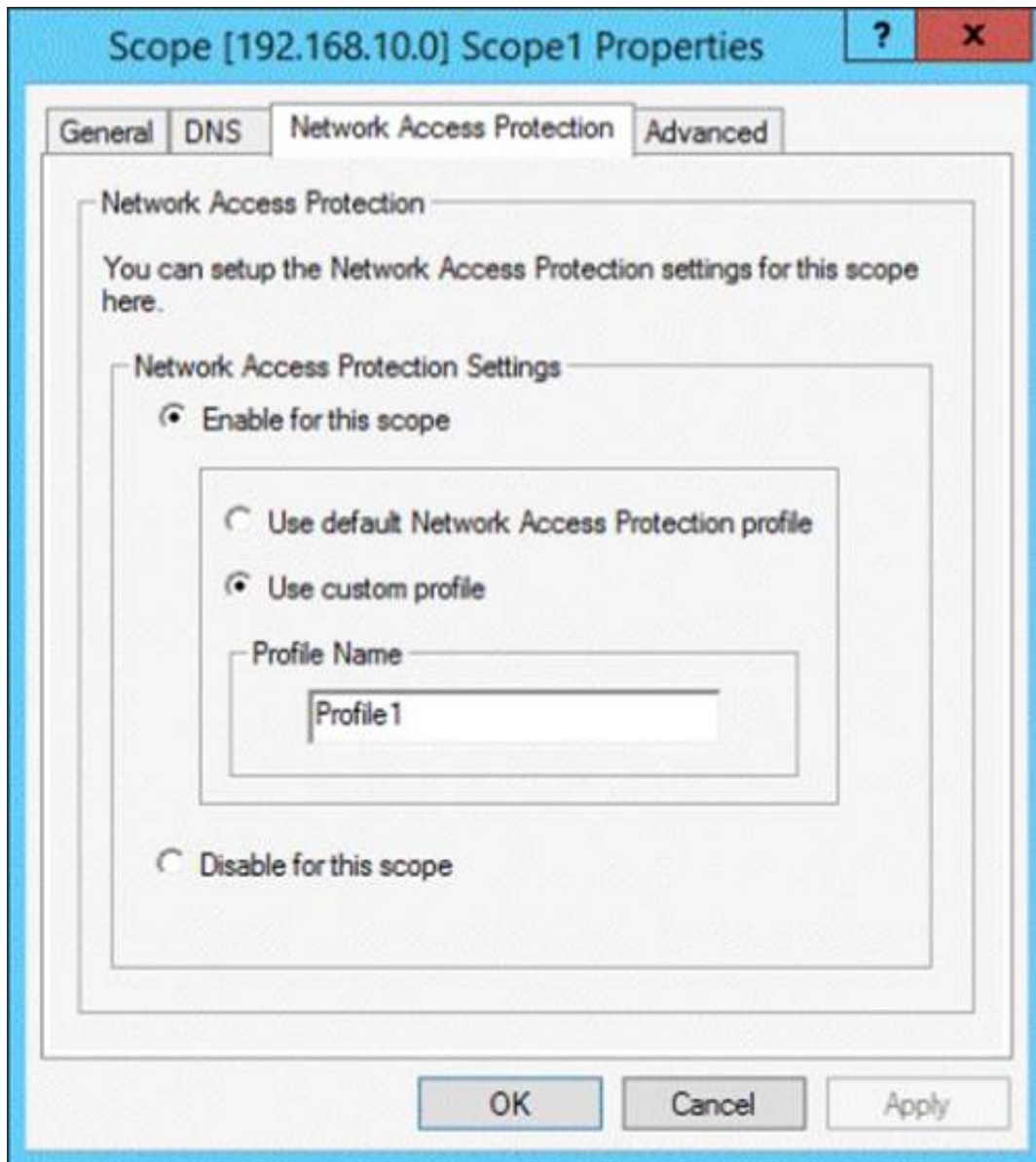
- BootImage1.
- BootImage2.**
- BootImage3.

15.HOTSPOT

Your network contains an Active Directory domain named contoso.com. The domain contains two servers named Server1 and Server2. Server1 has the Network Policy Server role installed. Server2 has the DHCP Server role installed. Both servers run Windows Server 2012 R2.

You are configuring Network Access Protection (NAP) to use DHCP enforcement.

You configure a DHCP scope as shown in the exhibit. (Click the Exhibit button.)



You need to ensure that non-compliant NAP clients receive different DHCP options than compliant NAP clients.

What should you configure on each server? To answer, select the appropriate options for each server in the answer area.

.....

Answer Area

Server1:

Server2:

Answer Area

Server1:
Health Policies
Identity-Type
MS-Service
Service-Type

Server2:
filters
a policy
scope options
server options
a User class
a Vendor class

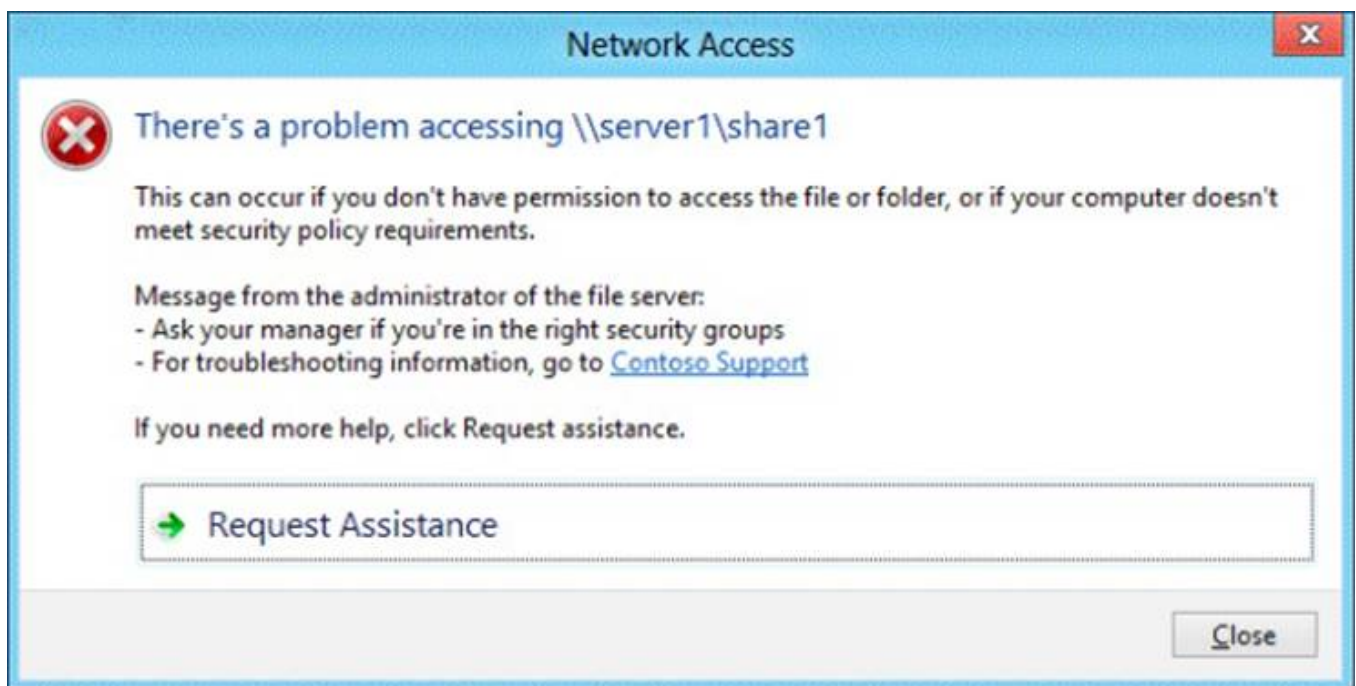
Answer:

Answer Area

Server1:
Health Policies
Identity-Type
MS-Service Class
Service-Type

Server2:
filters
a policy
scope options
server options
a User class
a Vendor class

16. Your network contains an Active Directory domain named contoso.com. The domain contains a file server named Server1 that runs Windows Server 2012 R2. Server1 has a share named Share1. When users without permission to Share1 attempt to access the share, they receive the Access Denied message as shown in the exhibit. (Click the Exhibit button.)



You deploy a new file server named Server2 that runs Windows Server 2012 R2.

You need to configure Server2 to display the same custom Access Denied message as Server1.

What should you install on Server2?

- A. The Remote Assistance feature
- B. The Storage Services server role
- C. The File Server Resource Manager role service
- D. The Enhanced Storage feature

Answer: C

17.HOTSPOT

Your network contains an Active Directory domain named contoso.com.

The domain contains the users shown in the following table.

User name	Member of
User1	Group1
User2	Group2
User3	Group3

You have a Network Policy Server (NPS) server that has the network policies shown in the following table.

Policy name	Condition	Processing order
Policy1	Date and time restriction: Sunday 00:00 to Saturday 24:00	2
Policy2	CONTOSO\Group1	1
Policy3	CONTOSO\Group2 or CONTOSO\Group3	3

User1, User2, and User3 plan to connect to the network by using a VPN. You need to identify which network policy will apply to each user. What should you identify? To answer, select the appropriate policy for each user in the answer area.

Answer Area

User1:

User2:

User3:

Answer Area

User1:
Policy1
Policy2
Policy3

User2:
Policy1
Policy2
Policy3

User3:
Policy1
Policy2
Policy3

Answer:

Answer Area

User1:

Policy1
Policy2
Policy3

User2:

Policy1
Policy2
Policy3

User3:

Policy1
Policy2
Policy3

18.DRAG DROP

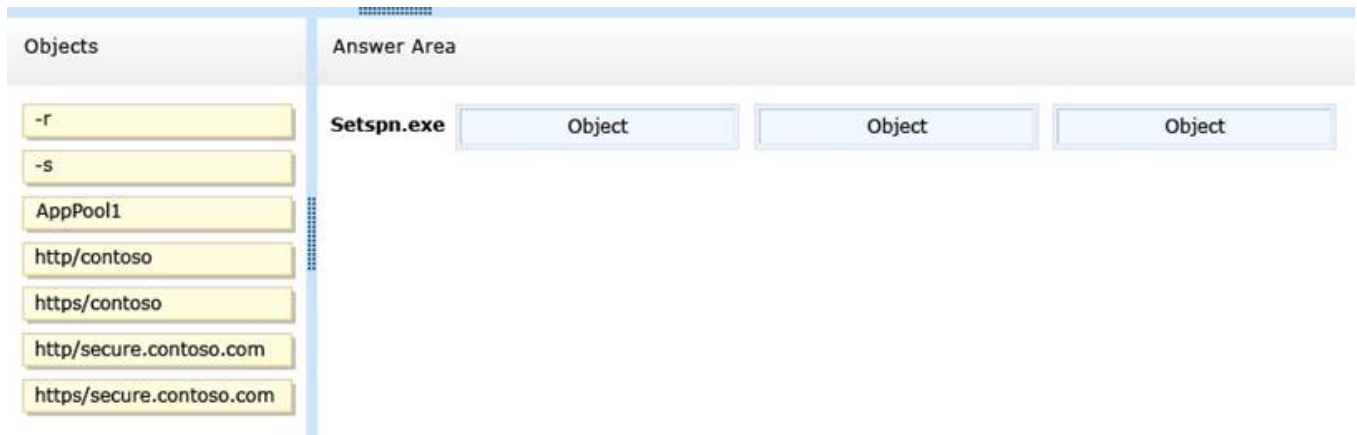
You are a network administrator of an Active Directory domain named contoso.com.

You have a server named Server1 that runs Windows Server 2012 R2. Server1 has the Web Server (IIS) server role installed.

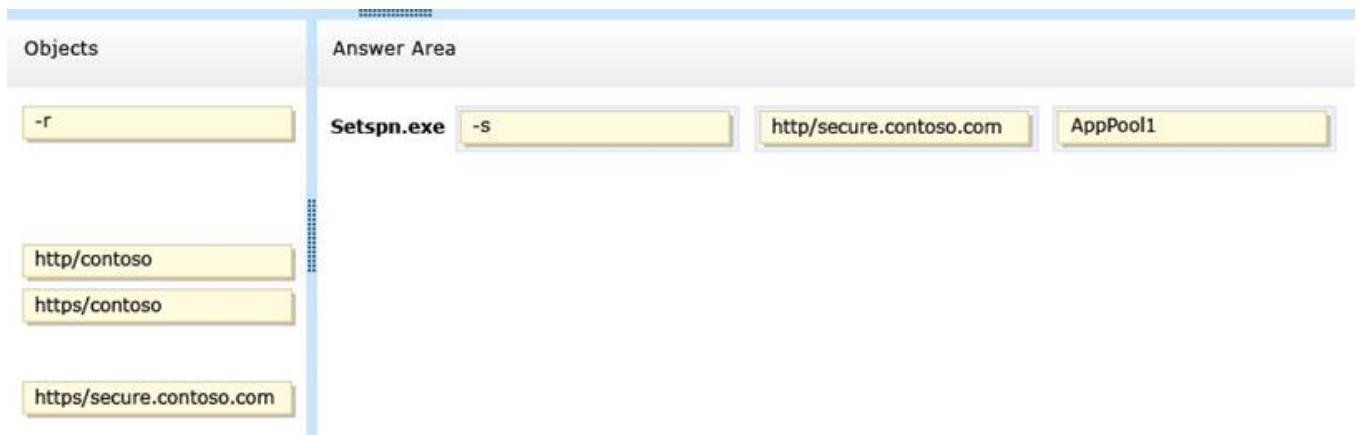
Server1 will host a web site at URL https://secure.contoso.com. The application pool identity account of the web site will be set to a domain user account named AppPool1.

You need to identify the setspn.exe command that you must run to configure the appropriate Service Principal Name (SPN) for the web site.

What should you run? To answer, drag the appropriate objects to the correct location. Each object may be used once, more than once, or not at all. You may need to drag the split bar between panes or scroll to view content.



Answer:



19. Your network contains an Active Directory domain named contoso.com. All domain controllers run Windows Server 2012 R2. In a remote site, a support technician installs a server named DC10 that runs Windows Server 2012 R2. DC10 is currently a member of a workgroup. You plan to promote DC10 to a read-only domain controller (RODC).

You need to ensure that a user named Contoso\User1 can promote DC10 to a RODC in the contoso.com domain. The solution must minimize the number of permissions assigned to User1.

What should you do?

A. From Active Directory Users and Computers, run the Delegation of

Control Wizard on the contoso.com domain object.

B. From Active Directory Administrative Center, pre-create an RODC computer account.

C. From Ntdsutil, run the local roles command.

D. Join DC10 to the domain. Run dsmod and specify the /server switch.

Answer: B

20. Your network contains an Active Directory domain named adatum.com. A network administrator creates a Group Policy central store. After the central store is created, you discover that when you create new Group Policy objects (GPOs), the GPOs do not contain any Administrative Templates. You need to ensure that the Administrative Templates appear in new GPOs.

What should you do?

A. Add your user account to the Group Policy Creator Owners group.

B. Configure all domain controllers as global catalog servers.

C. Copy files from %Windir%\Policydefinitions to the central store.

D. Modify the Delegation settings of the new GPOs.

Answer: C

Microsoft 70-411 Full Version: 251 Q&As



Search

Dumpsbase

New Site Online

27% OFF on All

Exams

Coupon: **2018**