

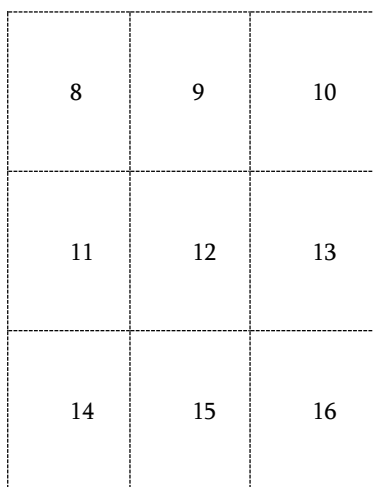
# Great Expectations Maternity Tunic

## PDF pattern

### Instructions:

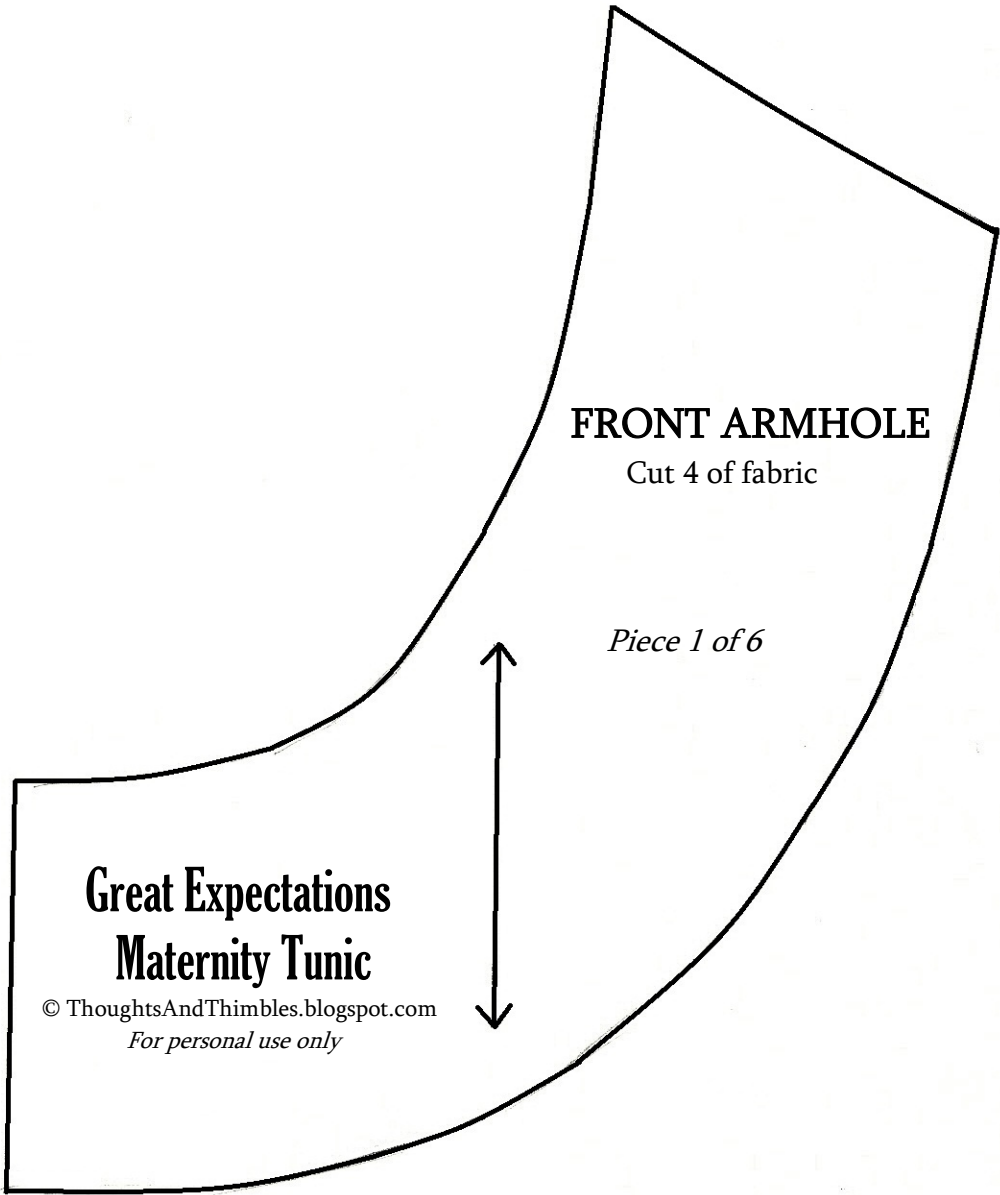
- Before you print out your pattern, print a sample test page to make sure the pattern is scaled correctly. Your printer should be set to “No scaling”, “Actual Size,” or “100%”. Do not select “Shrink to fit printable area.” The dashed outline for each page should measure 7” wide by 9 ½” long. If the sizing is correct, go ahead and print the rest of the pattern. *This pattern has been designed for 8 ½” by 11” paper.*
- Pages 4 and 5 (front yoke) should be connected along the center front line, unless you plan to cut your yoke on the fold. The same goes for pages 6 and 7 (back yoke). Assembly for these pieces is somewhat different – just cut along the center front line of each piece, align the pieces, and tape them together. The dashed lines on either side of the center front are to help with aligning the pieces. Once they’re taped, trace or cut the yoke pieces as desired.
- Pages 8 through 16 form the tunic front. Pages 17 through 22 form the tunic back. See the diagrams below for the correct arrangement of the pattern pages. To assemble these pages, my recommendation is to cut out each of the dashed boxes, align them carefully, and tape the boxes together.
- Once you’ve assembled your e-pattern sheets, I recommend tracing the pattern onto *non-fusible* interfacing (medium or heavy weight) or tissue paper. The interfacing is the more durable option, but either option is much easier than working with computer paper and tape! *I recommend tracing two copies of pages 2 and 3 (the armhole pieces), since you’ll need to cut four of each of those pieces from your fabric.*

TUNIC FRONT DIAGRAM



TUNIC BACK DIAGRAM





**Great Expectations  
Maternity Tunic**

© ThoughtsAndThimbles.blogspot.com  
*For personal use only*

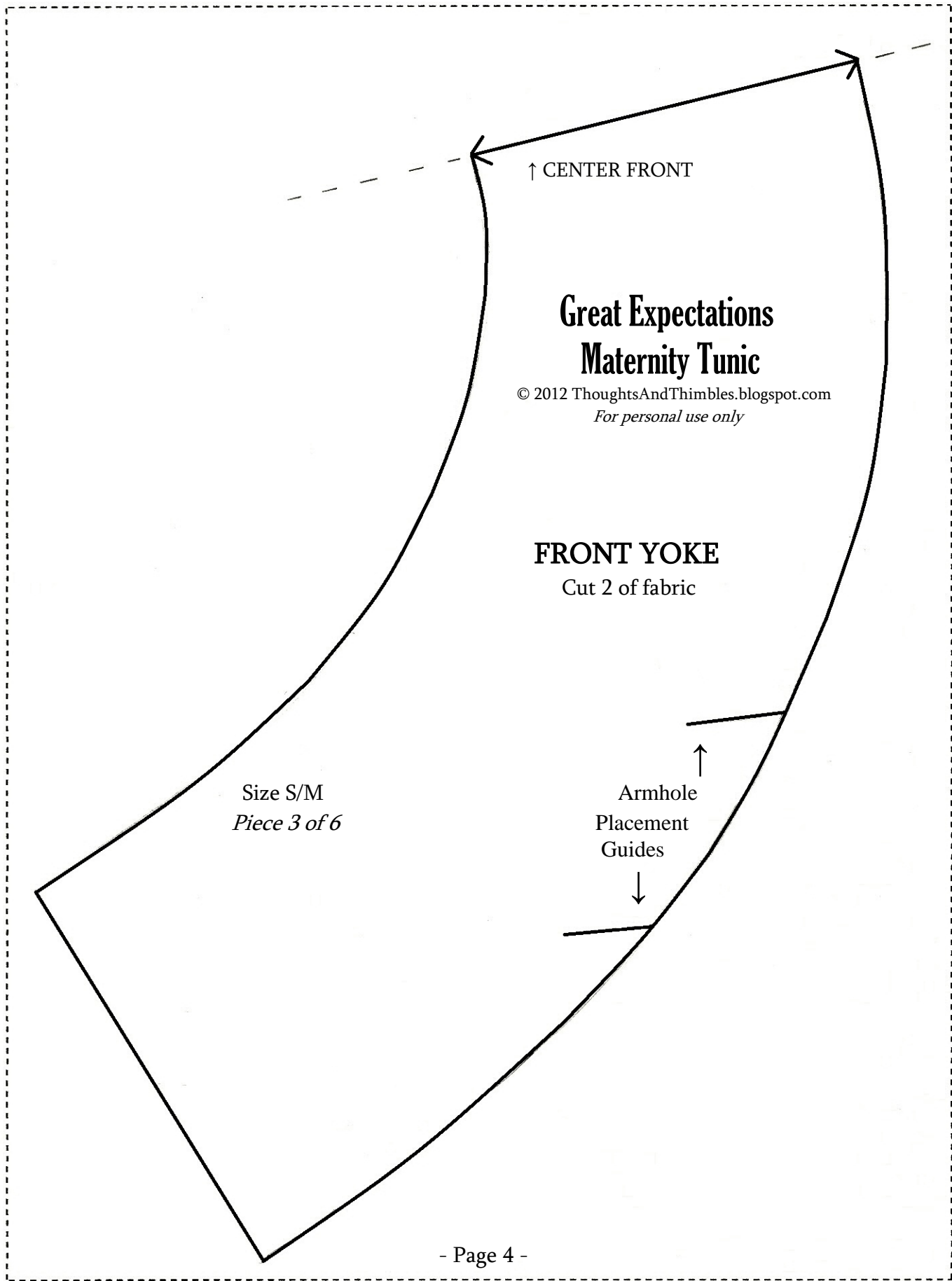
**BACK ARMHOLE**

Cut 4 of fabric

Size S/M  
*Piece 2 of 6*

**Great Expectations  
Maternity Tunic**

© 2012 ThoughtsAndThimbles.blogspot.com  
*For personal use only*



↑ CENTER FRONT

# Great Expectations Maternity Tunic

© 2012 ThoughtsAndThimbles.blogspot.com  
*For personal use only*

## FRONT YOKE

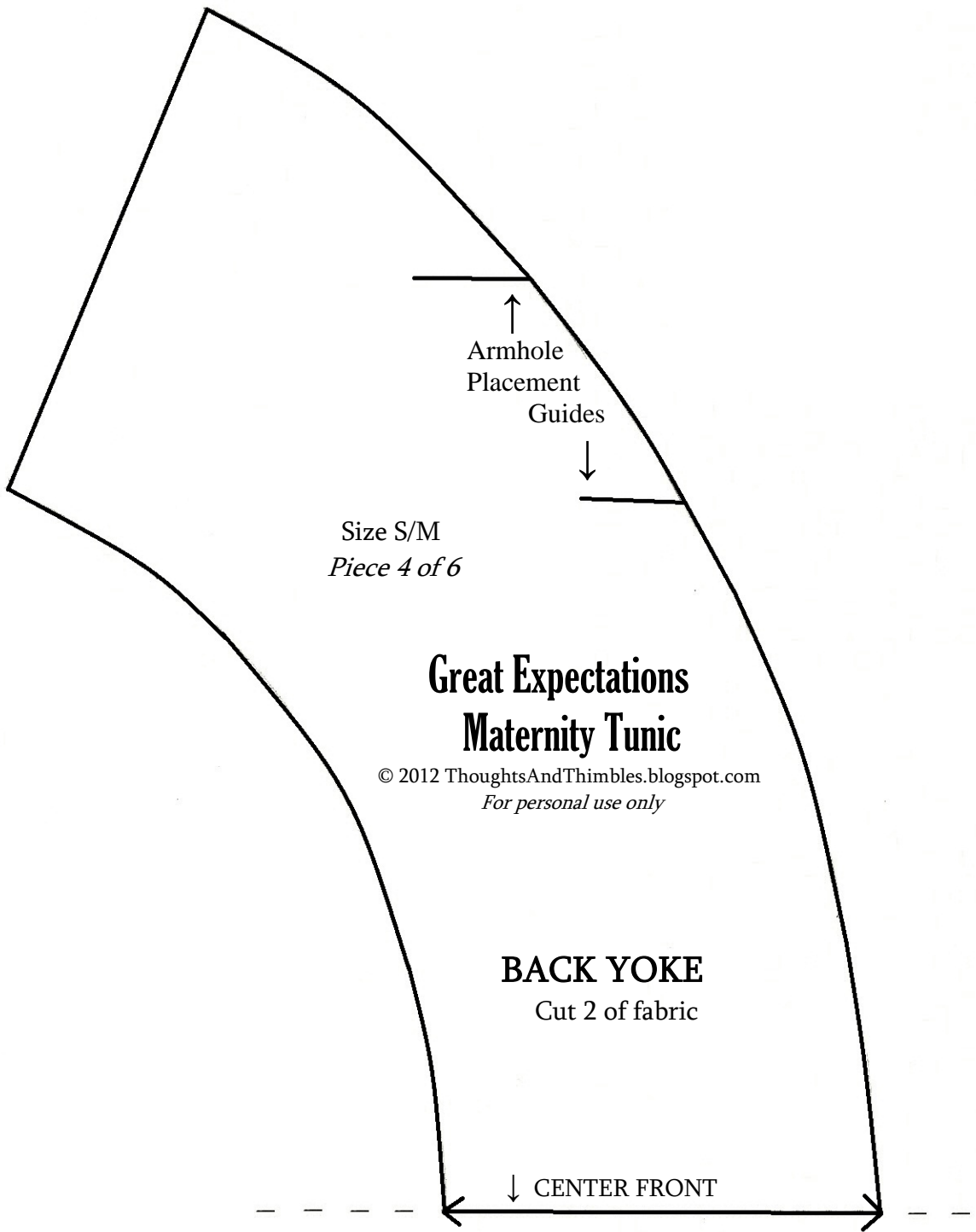
Cut 2 of fabric

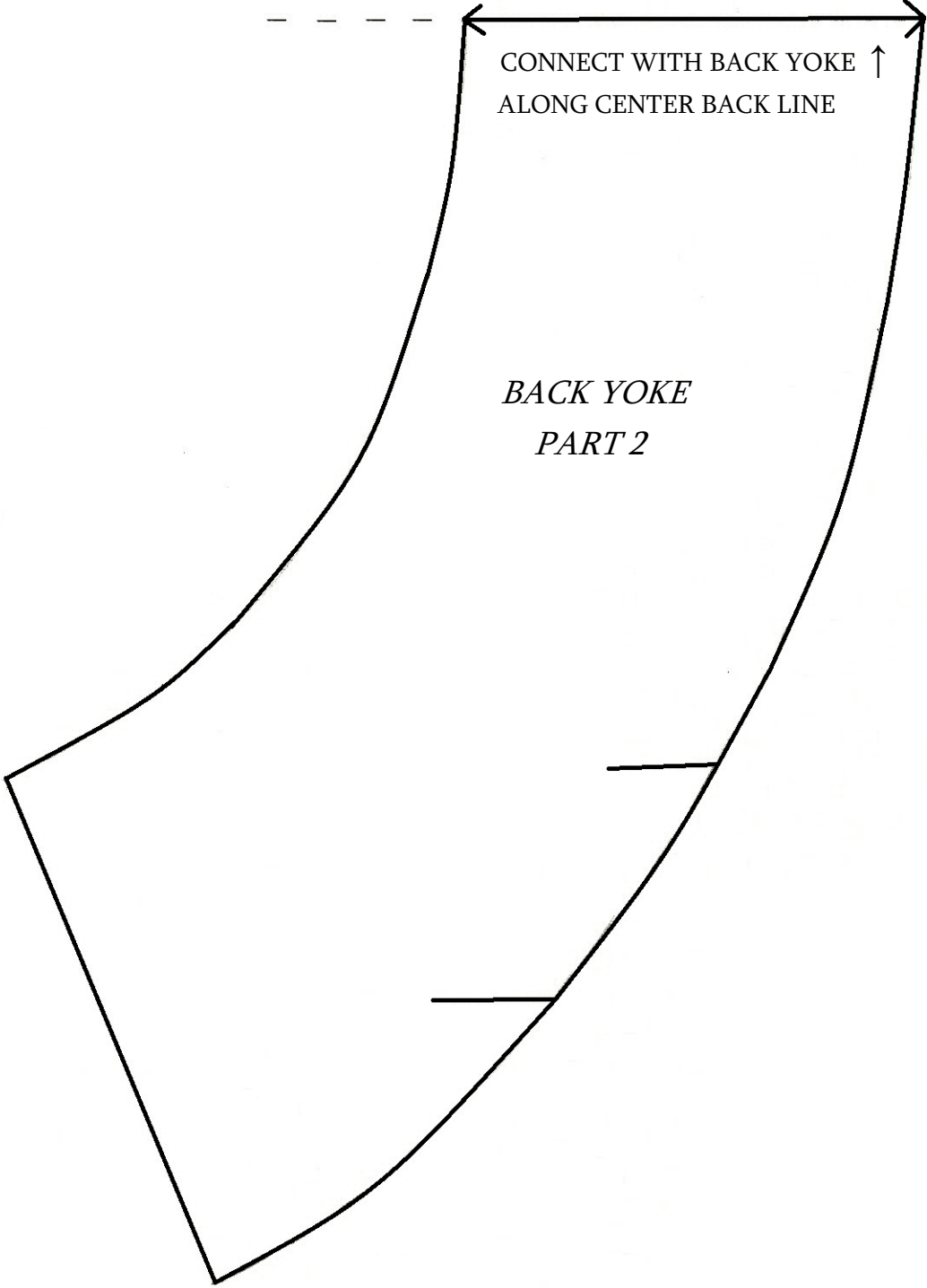
↑  
Armhole  
Placement  
Guides

Size S/M  
*Piece 3 of 6*

*FRONT YOKE  
PART 2*

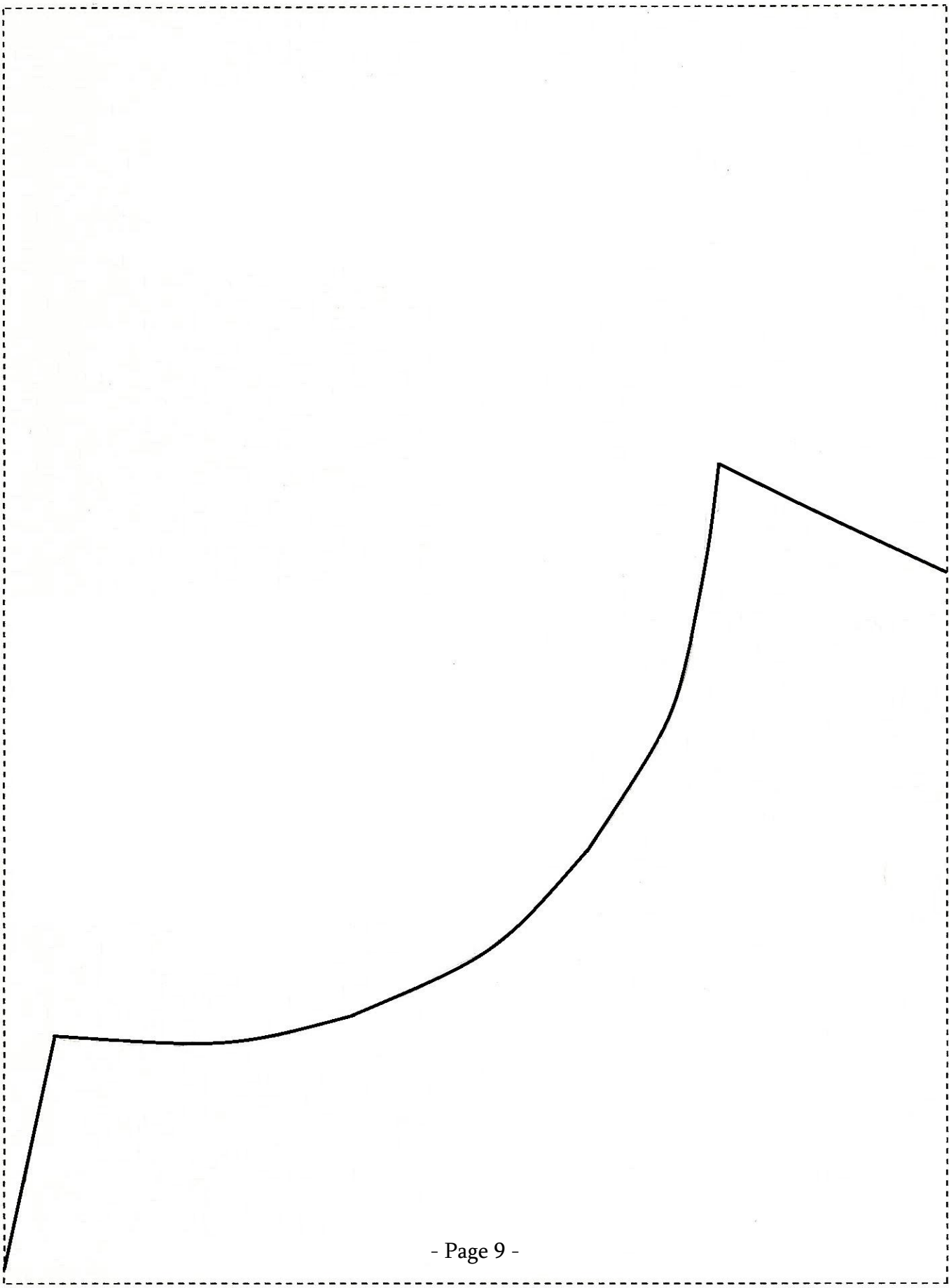
CONNECT WITH FRONT YOKE  
↓  
ALONG CENTER FRONT LINE

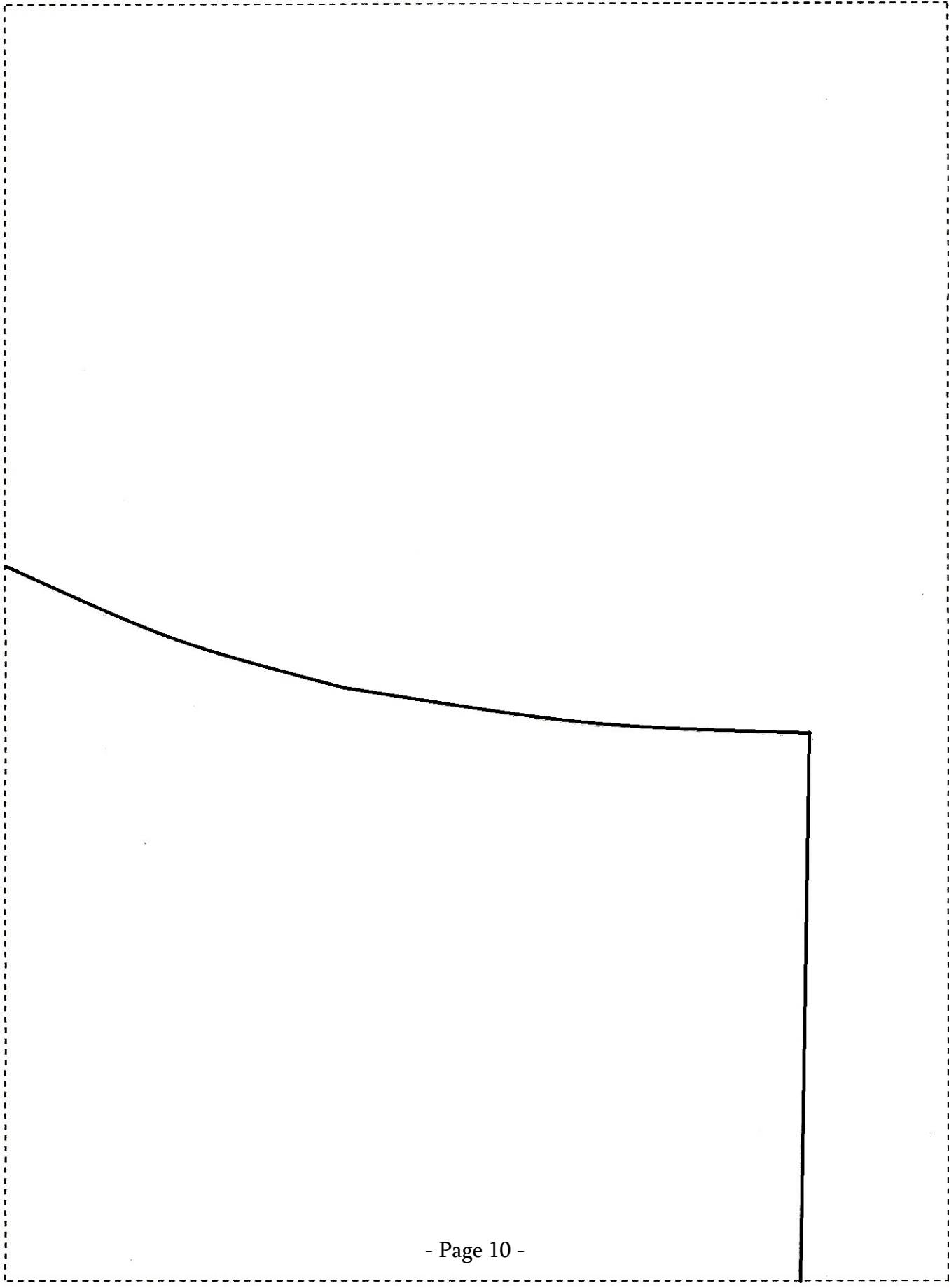


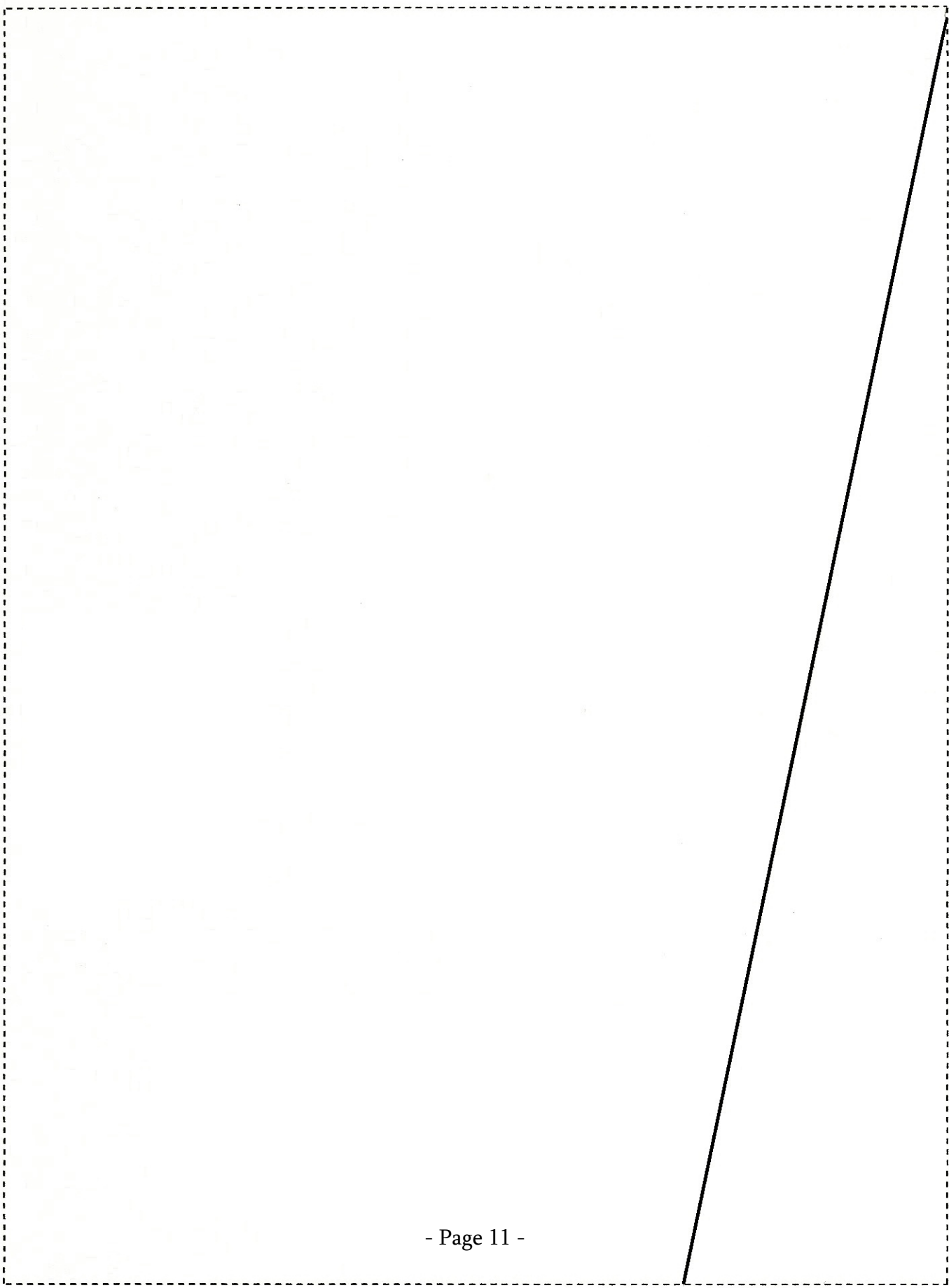


This Page Left Intentionally Blank









# Great Expectations Maternity Tunic

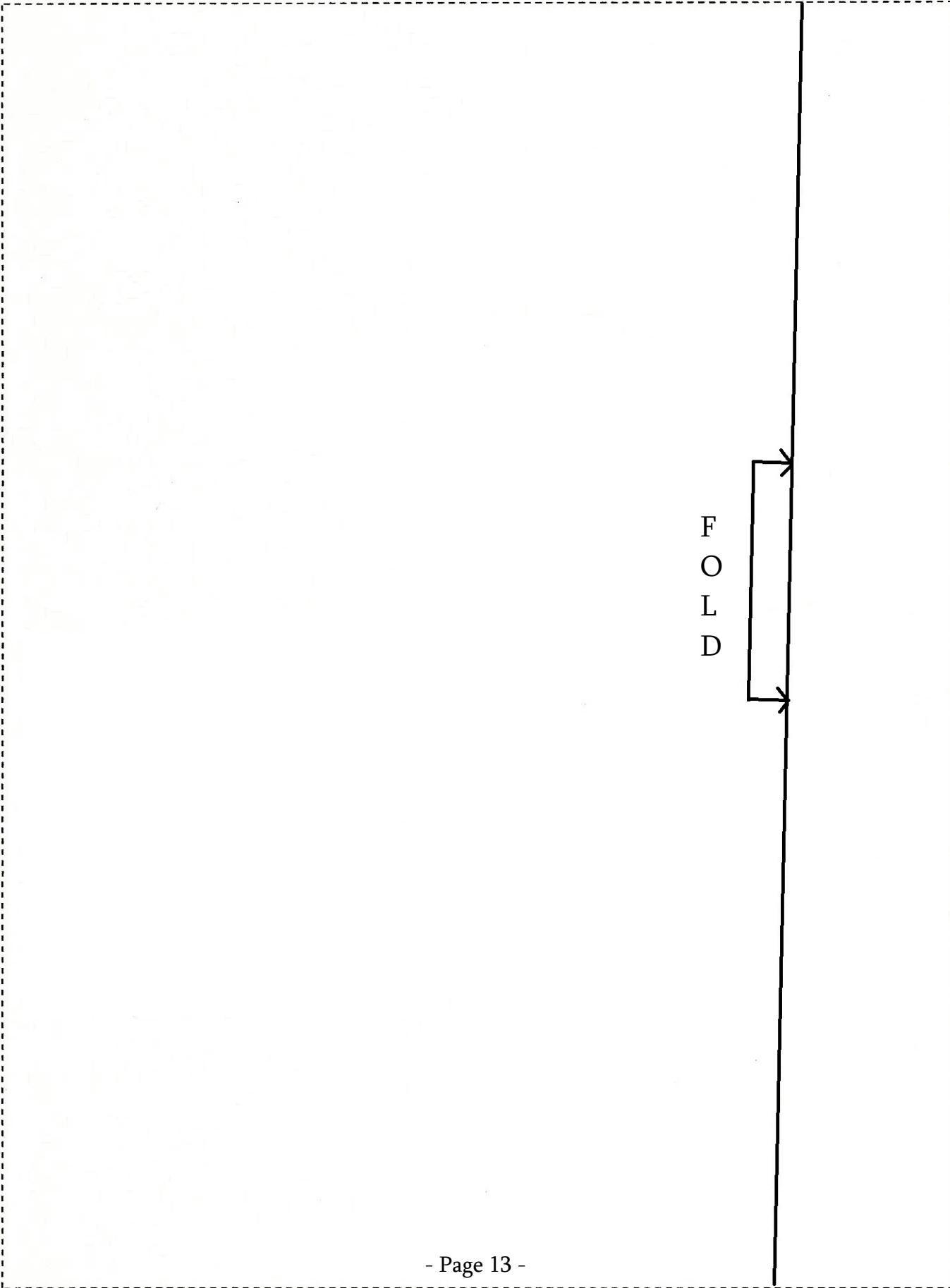
© 2012 ThoughtsAndThimbles.blogspot.com  
*For personal use only*

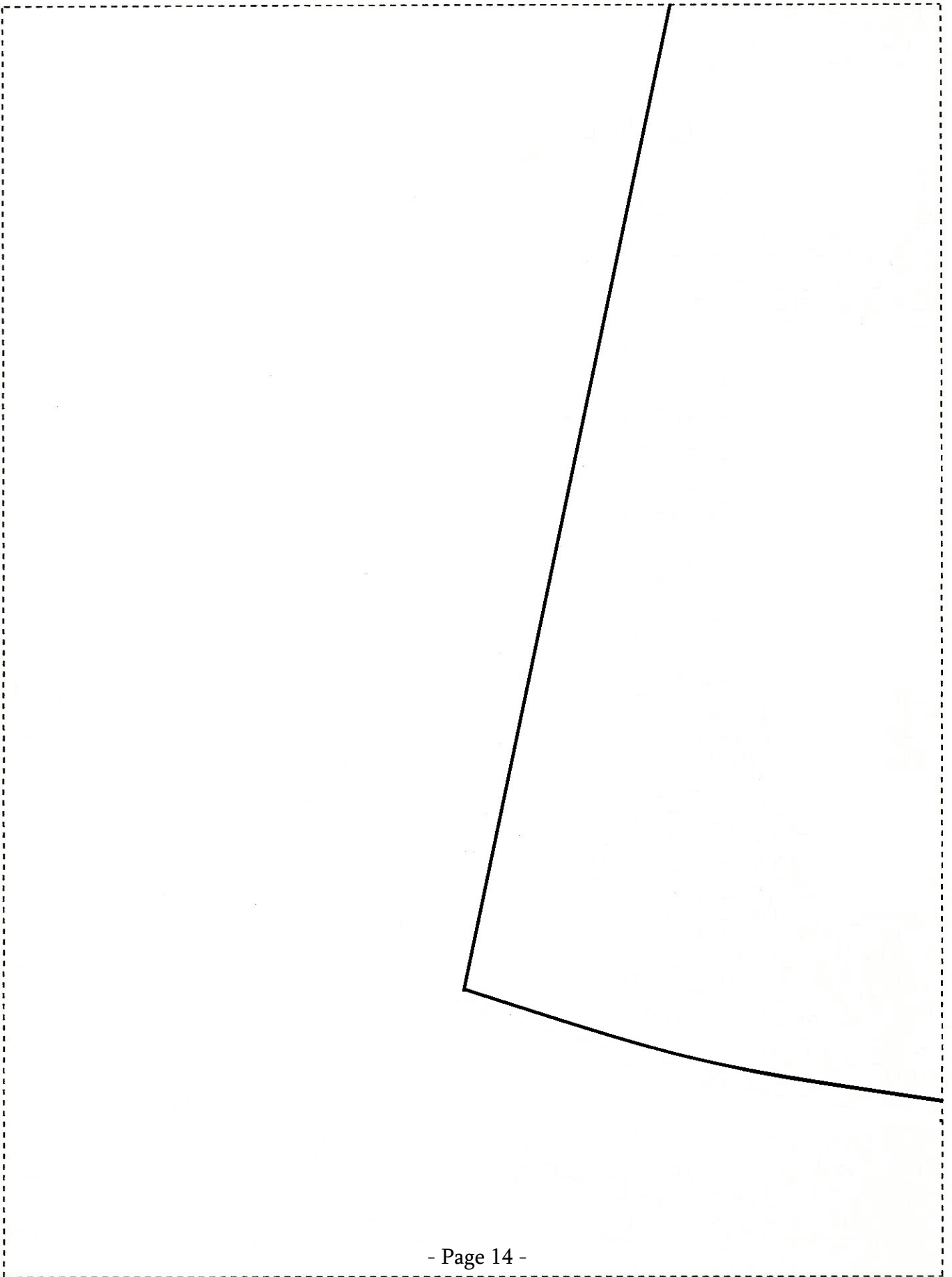
## TUNIC FRONT

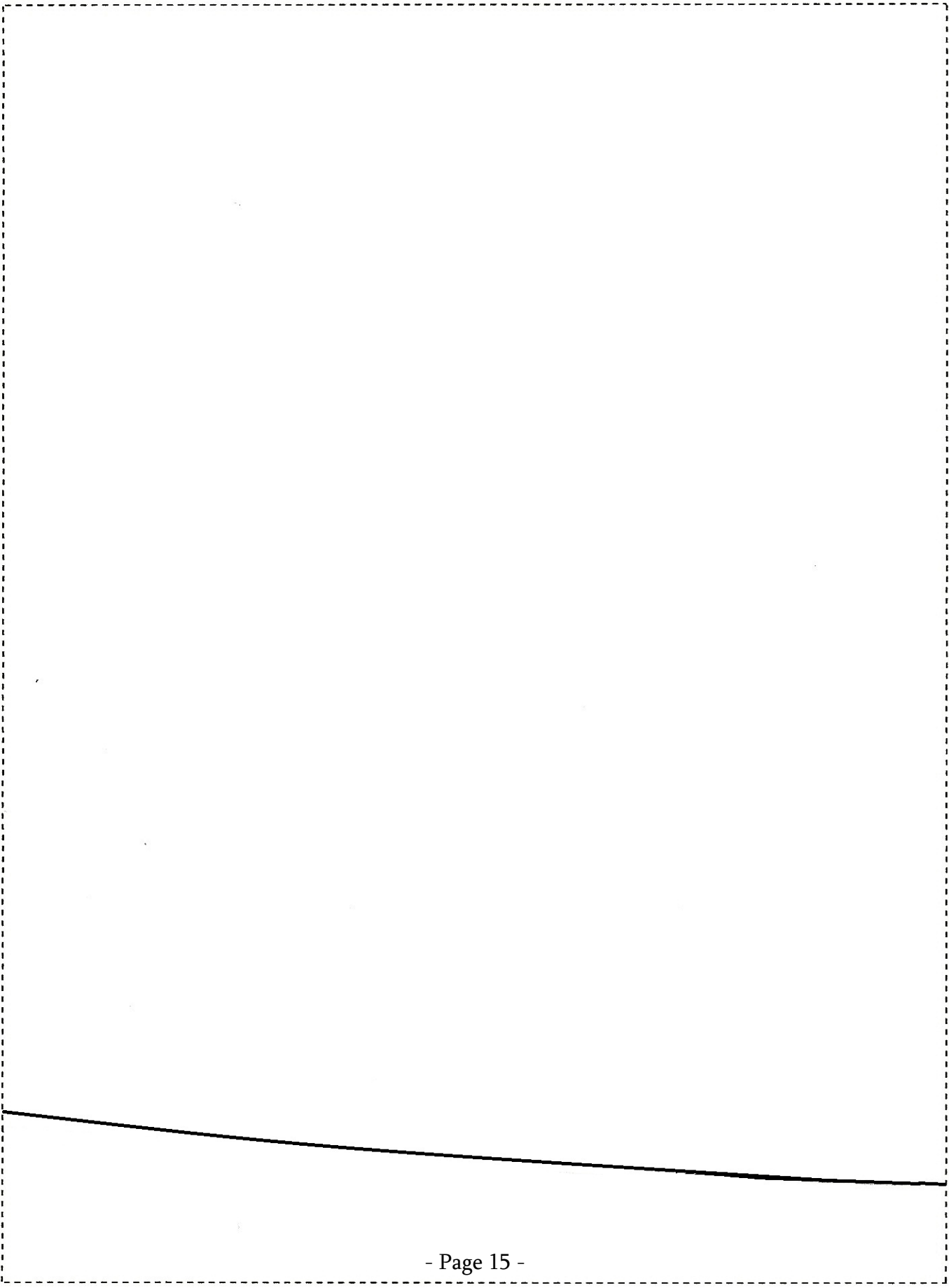
Cut 1 on fold

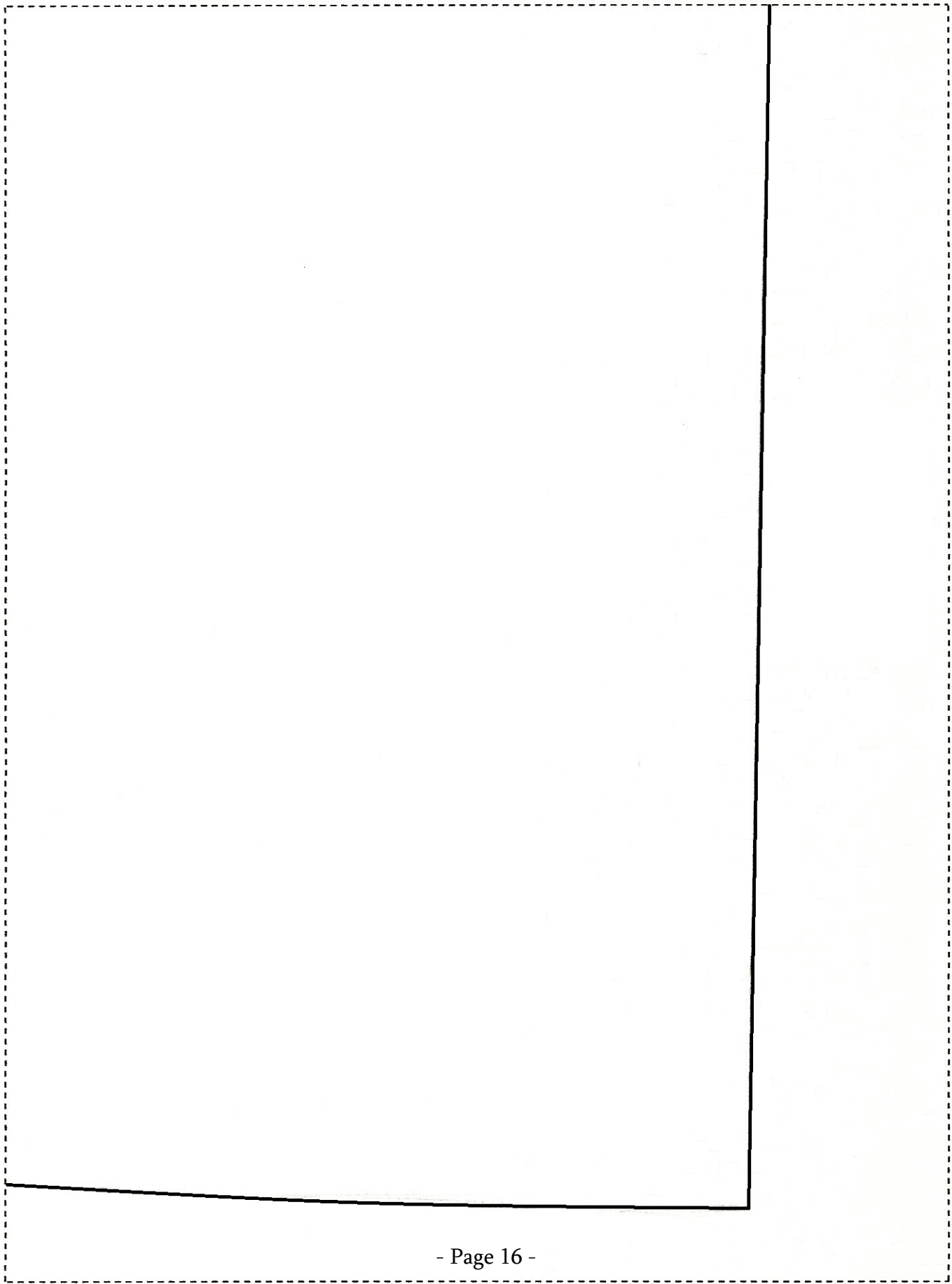
Size S/M

*Piece 5 of 6*

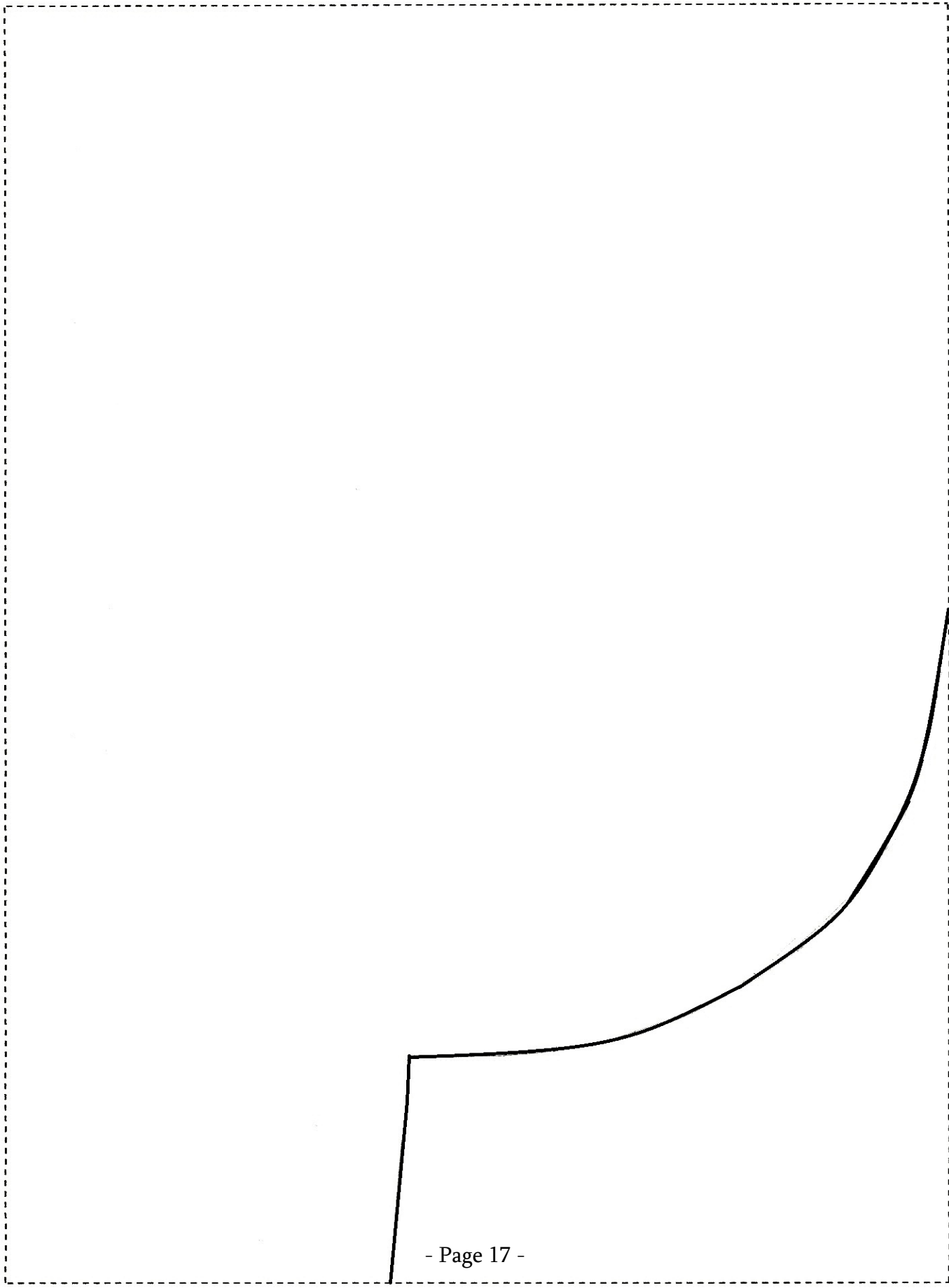


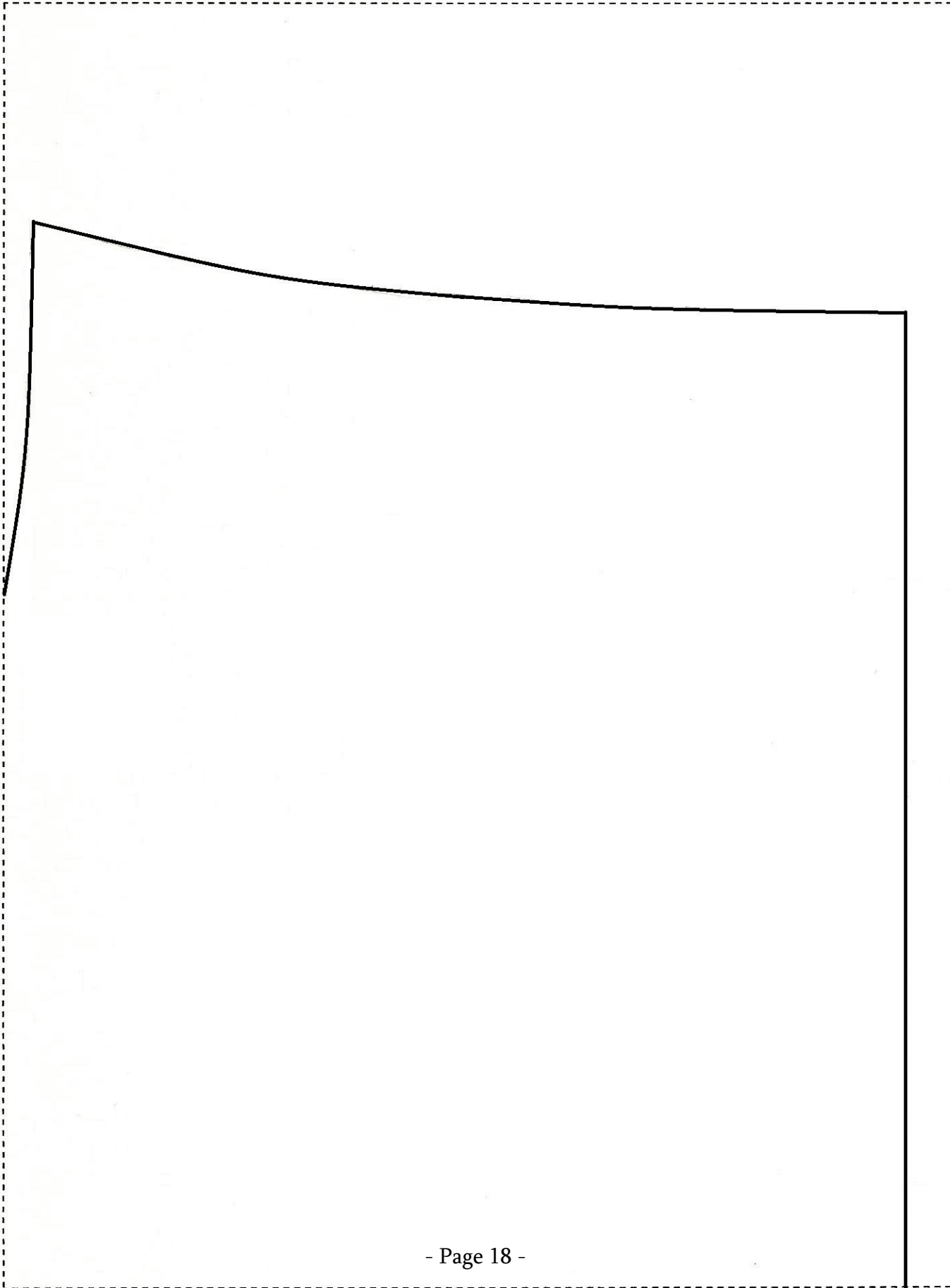


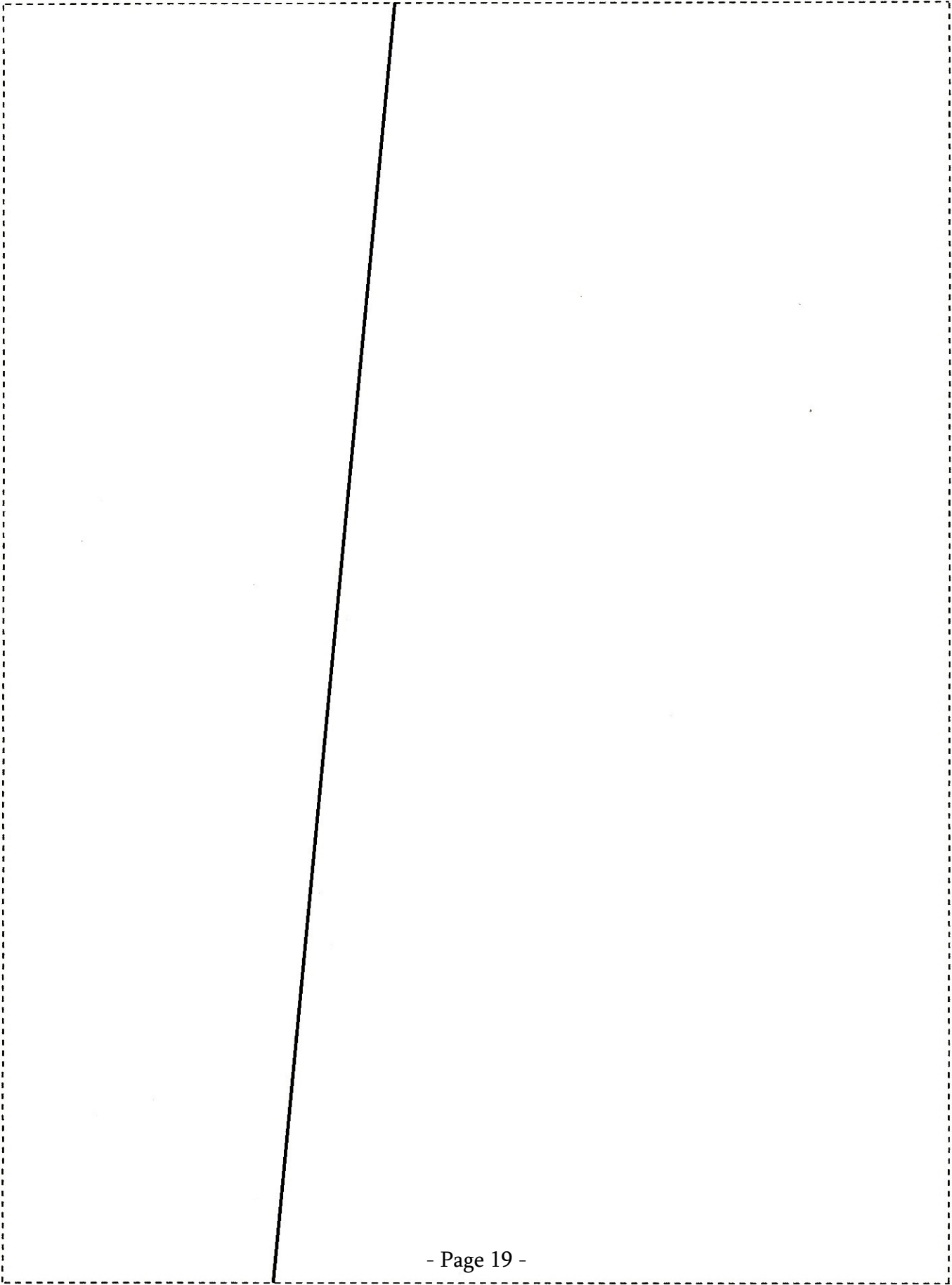












# Great Expectations Maternity Tunic

© 2012 ThoughtsAndThimbles.blogspot.com  
*For personal use only*

## TUNIC BACK

Cut 1 on fold

Size S/M

*Piece 6 of 6*

F  
O  
L  
D



