

Challenger

Challenger



Touring Caravans



We are shaping the future



Grade 3
Insulation
For year round comfort
BS EN 1645-1



European
Whole
Vehicle Type
Approved



All models are covered by a six-year bodyshell integrity guarantee and come with a three-year SuperSure manufacturer's warranty - see www.swiftcaravans.co.uk for more details.

See www.swiftcaravans.co.uk for more model pictures, the gallery is constantly updated as more models are available.



Swift Caravans, Dunswell Road, Cottingham, East Yorkshire HU16 4JS.
Tel: 01482 847332 Fax: 01482 841042 email: enquiry@swiftgroup.co.uk www.swiftcaravans.co.uk

A MEMBER OF THE SWIFT GROUP

This brochure does not constitute an offer by Swift Group Limited (Swift). Swift reserves the right to alter specifications and prices at any time as materials and conditions demand. Distributors and dealers sell Swift products on their own account and not as agents of Swift. Accordingly, they have no authority to bind Swift or to make any representation or undertaking whatsoever on behalf of Swift.
All props are for photographic purposes only and are not included in the specification. Issued September 2010

Challenger

Challenger 625 showing optional panoramic sunroof

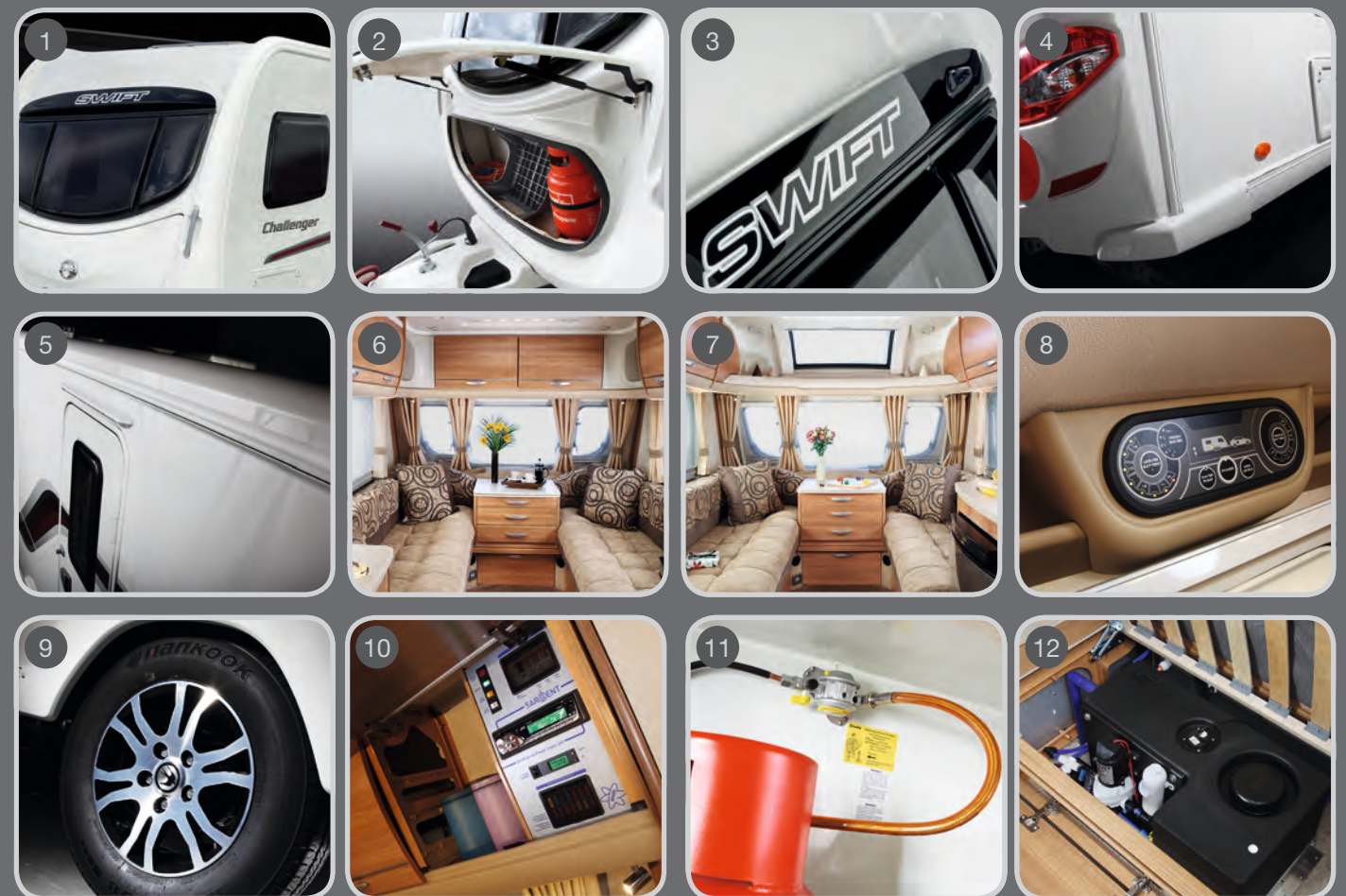
Using the latest automotive 3D design software, Swift Group designers have given the new Swift Challenger range a stunning redesign with a totally new exterior shape and advanced interior styling that will shape the future look of touring caravans.

The extra strong, thermally efficient body shell has 32mm thick laminated walls and roof and has been built to last using proven construction methods and durable materials. The new Challenger range is one of the 1st touring caravan ranges to be European Whole Vehicle Type Approved, so you can be reassured that they meet strict weight, dimension and safety standards. They also surpass the Grade 3 heating and insulation standard for all year round touring.

We are shaping the future

Key features include:

- 1 **New:** Exterior styling with roof capping rails integrating with full height GRP front, giving 6'5" headroom throughout
- 2 **New:** Large front door with double gas struts for easy access and stand-on hitch cover for access to cleaning front roof
- 3 **New:** Rain water deflector incorporating brand badge
- 4 **New:** Profiled side skirts in tough self coloured uPVC with integrated awning channel
- 5 **New:** Recessed awning channel on both sides
- 6 **New:** Spacious moulded front roof locker with integrated speakers and LED lights
- 7 **New:** **Optional** Panoramic sunroof integrated with automotive style roof locker system with LED downlighters and speakers
- 8 **New:** Easy to read control panel
- 9 **New:** Hankook tyres with a minimum of 150Kg extra load margin for improved performance and safety
- 10 **New:** Eye-level electrical consumer unit
- 11 **New:** Gas regulator with stainless steel braided hose for improved reliability
- 12 **New:** 30 litre internal fresh water tank in twin axle models with additional external pump for tank filling or direct feed to taps



Challenger



The unique new profile has a sweeping front panel which links with roof capping rails that integrate with the full height rear panel to give a stunning new look. Important practical details like rain water management, awning channels and road lighting have been neatly incorporated in the overall design.

Inside new 'Mali Acacia' woodgrain offers richer colouring with a defined woodgrain texture and the contour of the front panel allows for maximum headroom and roof-locker space throughout. The automotive style front roof locker design gives an integrated look and provides increased storage space. A new front chest has a slide out top so you can extend it without disturbing items on the top and a 'binnacle' behind it houses an extra TV point, a 12V socket and two 230V sockets for phones, games etc.



Challenger



New kitchens are accented with cream locker doors and improved design allows a lower position for the microwave oven to make it easier to see your food cooking and improve safety. A new bowl in granite effect GRP looks great and features an occasional draining area and a strainer waste. Dual fuel hob, Thetford oven and large stainless steel effect fridge freezer complete the well equipped space. All task lighting is ultra low energy, low temperature, solid state LED and is complemented with fluorescent over locker lighting.

All new washrooms have better storage space, with some end washroom models having a new cubicle, a spacious double door wardrobe and a combined basin and worktop in granite effect.



Challenger



Challenger

Weights: For 2011 models the method of calculating the MRO and payload figures has changed. Allowances for essential equipment (e.g. gas cylinders) previously allowed for in the user payload are now within the MRO. The provision for a leisure battery has been included within the personal effects payload allowance.

Bed Sizes: Please note that the front double bed sizes quoted are for seating configurations without chest of drawers. The front double bed width for a layout with a chest of drawers fitted will be reduced by 0.5m (1'8") from that stated.

Awning sizes: Due to varying awning designs and sizes the awning sizes given are approximate only. Specific awning sizes must be confirmed by your dealer or awning manufacturer prior to purchase.

	480	530	540	565	570	580	620	625
Berths	2	4	4	4	4	4	4	6
Number of Axles	1	1	1	1	1	1	2	2
Internal Length (at bed box height)	4.74m/15'7"	5.50m/18'11"	5.50m/18'11"	5.60m/18'4"	5.60m/18'4"	5.83m/19'2"	6.27m/20'7"	6.27m/20'7"
Overall Width	2.31m/7'7"	2.31m/7'7"	2.31m/7'7"	2.31m/7'7"	2.31m/7'7"	2.31m/7'7"	2.31m/7'7"	2.31m/7'7"
Overall Height (inc. TV Aerial)	2.62m/8'7"	2.62m/8'7"	2.62m/8'7"	2.62m/8'7"	2.62m/8'7"	2.62m/8'7"	2.62m/8'7"	2.62m/8'7"
Maximum Internal Headroom	1.95m/6'5"	1.95m/6'5"	1.95m/6'5"	1.95m/6'5"	1.95m/6'5"	1.95m/6'5"	1.95m/6'5"	1.95m/6'5"
Overall Length	6.46m/21'2"	7.22m/23'8"	7.22m/23'8"	7.32m/24'0"	7.32m/24'0"	7.55m/24'9"	7.99m/26'3"	7.99m/26'3"
Mass in Running Order (inc. tolerance)	1285kg/25.3cwt	1452kg/28.6cwt	1423kg/28.0cwt	1441kg/28.4cwt	1436kg/28.3cwt	1454kg/28.6cwt	1574kg/31.0cwt	1624kg/32.0cwt
Maximum Technical Permissible Laden Mass	1420kg/28.0cwt	1615kg/31.8cwt	1586kg/31.2cwt	1605kg/31.6cwt	1600kg/31.5cwt	1620kg/31.9cwt	1775kg/34.9cwt	1845kg/36.3cwt
Total User Payload	135kg/2.7cwt	163kg/3.2cwt	163kg/3.2cwt	164kg/3.2cwt	164kg/3.2cwt	166kg/3.3cwt	201kg/4.0cwt	221kg/4.4cwt
Personal Effects Payload	125kg/2.5cwt	153kg/3.0cwt	153kg/3.0cwt	154kg/3.0cwt	154kg/3.0cwt	156kg/3.1cwt	161kg/3.2cwt	181kg/3.6cwt
Options	10kg/0.2cwt	10kg/0.2cwt	10kg/0.2cwt	10kg/0.2cwt	10kg/0.2cwt	10kg/0.2cwt	40kg/0.8cwt	40kg/0.8cwt
Awning A/A Dimension	9.12m/29'11"	9.88m/32'5"	9.88m/32'5"	9.98m/32'9"	9.98m/32'9"	10.21m/33'6"	10.65m/34'11"	10.65m/34'11"
Tyre Size	185 R14C 102 Q	195/70 R15 104 R	195/70 R15 104 R	195/70 R15 104 R	195/70 R15 104 R	195/70 R15 104 R	185/70 R14 88 T	185/70 R14 88 T
Front Double	2.09m x 1.86m/6'10" x 6'1"	2.09m x 1.76m/6'10" x 5'9"	2.09m x 1.56m/6'10" x 5'1"	2.09m x 1.56m/6'10" x 5'1"	2.09m x 1.56m/6'10" x 5'1"	2.09m x 1.56m/6'10" x 5'1"	2.09m x 1.56m/6'10" x 5'1"	2.09m x 1.56m/6'10" x 5'1"
Or Front Nearside Single	1.86m x 0.71m/6'1" x 2'4"	1.76m x 0.71m/5'9" x 2'4"	1.56m x 0.71m/5'1" x 2'4"	1.56m x 0.71m/5'1" x 2'4"	1.56m x 0.71m/5'1" x 2'4"	1.56m x 0.71m/5'1" x 2'4"	1.56m x 0.71m/5'1" x 2'4"	1.56m x 0.71m/5'1" x 2'4"
And Front Offside Single	1.86m x 0.71m/6'1" x 2'4"	1.86m x 0.71m/6'1" x 2'4"	1.56m x 0.71m/5'1" x 2'4"	1.56m x 0.71m/5'1" x 2'4"	1.56m x 0.71m/5'1" x 2'4"	1.56m x 0.71m/5'1" x 2'4"	1.56m x 0.71m/5'1" x 2'4"	1.86m x 0.71m/6'1" x 2'4"
Rear Double			1.92m x 1.34m/6'4" x 4'5"		1.92m x 1.34m/6'4" x 4'5"	1.85m x 1.33m/6'1" x 4'4"	1.92m x 1.34m/6'4" x 4'5"	1.92m x 1.34m/6'4" x 4'5"
Side Single Offside		1.80m x 0.69m/5'11" x 2'3"		1.92m x 0.72m/6'4" x 2'4"				1.80m x 0.69m/5'11" x 2'3"
Side Single Nearside				1.92m x 0.72m/6'4" x 2'4"				
Side Bunk Offside		1.76m x 0.59m/5'9" x 1'11"						1.76m x 0.59m/5'9" x 1'11"

Key features

- **New:** European Whole Vehicle Type Approval ensures compliance with strict weight, dimension and safety regulations
- 2.31m (7'7") wide bodyshell
- 1.95m (6'5") headroom
- **New:** Exterior styling with roof capping rails integrating with full height GRP front and moulded rear panels
- **New:** Large front door with double gas struts for easy access
- One-piece, 5000 Series marine grade aluminium sidewalls
- EN1645 Grade 3 classification for heating and thermal insulation (Cold chamber tested)
- **New:** Extra strong, thermally efficient body shell with 32mm thick fully bonded roof and walls
- **New:** Wheel arches insulated with high density foam to prevent cold spots in storage areas
- **New:** Profiled side skirts in tough self coloured uPVC with integrated awning channel
- **New:** Recessed awning channel on both sides
- **New:** Hankook tyres, higher rated for improved performance and safety
- **New:** High capacity moulded front roof locker with integrated speakers and LED lights
- Low energy lighting system with fluorescent ambient over-locker lights and LED task lights
- **New:** Front chest of drawers design with slide out extending top

- **New:** 'Binnacle' on front shelf with two 230V and a combined 12V/aerial socket
- Four further 230V sockets and combined 12V/aerial socket
- **New:** Granite effect kitchen sink with integrated occasional drainer and removable extension drainer
- **New:** Low height built-in microwave oven with digital controls

Key options

- **New:** Panoramic front roof window with automotive style roof locker system
- **New:** 'Impala' stain-resistant, easy-clean seating fabric with soft nubuck texture

Additional features

Exterior

- AL-KO galvanised steel chassis with Euro-Axle
- AL-KO Euro overrun device with two-way assisted handbrake
- AL-KO AKS 3004 stabiliser
- Shock absorbers for a smoother more stable ride
- Heavy duty corner steadies
- 13-pin 'Jaeger' 12V car connector
- **New:** Latest generation rear light clusters
- **New:** Low level front marker lights to minimise dazzle in towcar mirrors
- **New:** Rain water deflector incorporating brand badge

- **New:** Stand-on hitch cover for access to cleaning front roof
- **New:** Gas regulator fitted with stainless steel braided hose for improved reliability
- BBQ point
- Larger entrance door - 45mm (2") wider and 80mm (3") taller with interior moulded liner, window, blind and **new** larger capacity door waste bin
- 'Storm' exclusive alloy wheels
- Spare wheel (steel) and underslung carrier
- Exclusive shape double-glazed opening windows with night ventilation position
- Exterior access battery box with satellite aerial inlet and mains electric inlet (battery not included)
- External access door under front nearside seat
- Large external access door under fixed beds (model specific)
- LED awning light
- Entrance step
- **New:** 44mm 'sandwich' floor with pre-treated plywood and Styrofoam insulation core
- **New:** Strong redwood body and floor framing specially treated to resist moisture and fungal attack

Interior

- **New:** 'Mali Acacia' woodgrain
- **New:** Textured plain chenille seating fabric with contemporary accent fabrics
- **New:** 'Traffic' heavy duty, durable floor vinyl
- Door flyscreen with easy concertina action

- Heki De-Luxe large tilting panoramic roof window with flynet and pleated blind
- Cassette flyscreens and pleated blinds on all windows
- Multi-position 'Mini-Heki' or 'Midi-Heki' clear rooflight with flyscreen and blind (model specific)
- Large overhead lockers with injection-moulded spaceframe construction and curved doors
- Seat bases with spaceframe construction, full front access and space for larger items
- Fixed beds with aluminium frames to maximise strength and storage space
- Hinged seat and bed tops supported in open position for easy access
- Mattresses and seat cushions supported by beech slats for extra comfort
- Sprung interior mattresses, main seat and backrest cushions
- 'Ultra Comfort' luxury deep sprung bed mattress in fixed bed models
- Seat and backrest ventilation boards
- Positive overhead locker catches for secure loading
- Removable carpet with 45oz pile weight
- Free-standing table with dedicated storage location
- Two large scatter cushions
- Twin curtain track for improved hanging and ease of use

- Removable sink drainer with flynet and pleated blind
- Food grade nylon chopping board with dedicated storage
- Slide-out storage rack
- Moulded cutlery drawer on smooth steel runners
- Chrome finish brass mixer taps, separate shower taps, shower head with riser bar
- Lined washroom cubicles in all models
- **New:** Granite effect washroom basin in 480 and 530 models
- 32mm thick lightweight washroom door with metal domestic style handle
- Thetford C250 toilet with 18 litre wheeled holding tank

Equipment

- **New:** User friendly 12V control panel with battery selection, battery state meter, lighting, water tank level (Twin Axle models) and water pump circuit controls set in moulded housing with key shelves
- **New:** Locker mounted eye level power supply unit and power management for easy access
- 107 litre fridge with metallic finish, electronic ignition and digital controls
- Thermostatic oven and separate grill

- Dual fuel hob with 800W electric hotplate and 3 gas burners with electronic ignition and flame failure protection
- Glass hob lid with safety cut-out feature
- Dual fuel gas and 800W mains electric storage water heater
- Dual fuel 3kW gas and 2kW electric space heater
- Areas under beds and seats warmed by blown air system and underfloor ducting insulated to minimise heat loss
- **New:** 30 litre internal fresh water tank (Twin Axles Only) with additional external pump for filling or direct feed to taps
- High flow rate on-board water pump with self priming and pressure regulating accumulator
- Inboard semi-rigid fresh water pipes
- Isolation taps for gas appliances
- Large bore underslung rigid waste pipes
- 25 Amp switchmode charger/transformer
- Solar panel connection provision
- External coax connection point for aerial or satellite dish
- Status 530 directional Digital / Analogue TV/ FM aerial and booster
- Radio/CD/MP3 player with iPod/MP3 player connection
- 25 metre mains hook-up cable
- External 230V mains socket

Safety and Security

- Higher tyre ratings - a minimum of 150 Kg extra load margin at 130kph (law permitting)
- Passive infra-red alarm system with tilt sensor and key fob operation
- Receiver for optional AL-KO Secure wheel lock
- Smoke alarm
- CRiS identity number etched to windows and caravan chassis
- Concealed security data chip within caravan construction
- High security entrance lock